

Historic, Archive Document

Do not assume content reflects current scientific knowledge, policies, or practices.

62, 61

RECEIVED

★ MAY 17 1932 ★

U. S. Department of Agriculture

Bassi Freres
de Paris

A COMPLETE
HORTICULTURAL
ORGANIZATION

1932

STORE

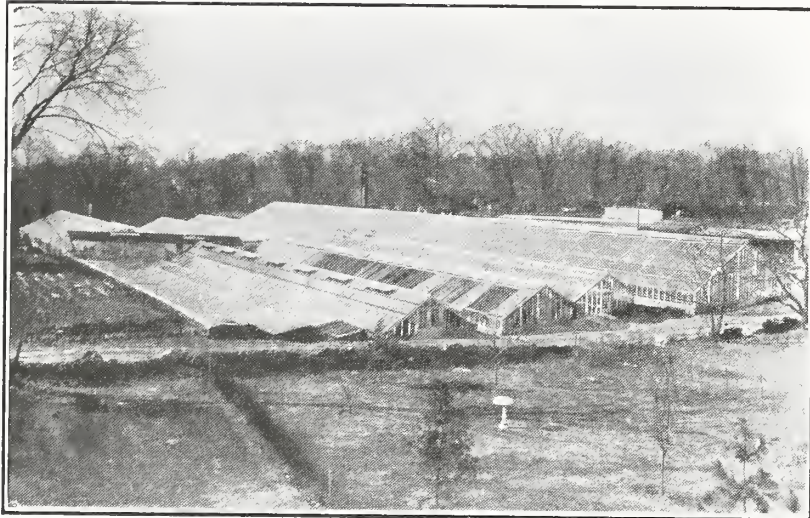
478 Main Street
New Rochelle, N. Y.
Tel. New Rochelle, 8700-01-02

NURSERY

Boston Post Road
Larchmont, N. Y.
Tel. Larchmont 1500-01



At the right is a view of our nursery which is stocked with many thousands of dollars worth of rare and choice trees and shrubs



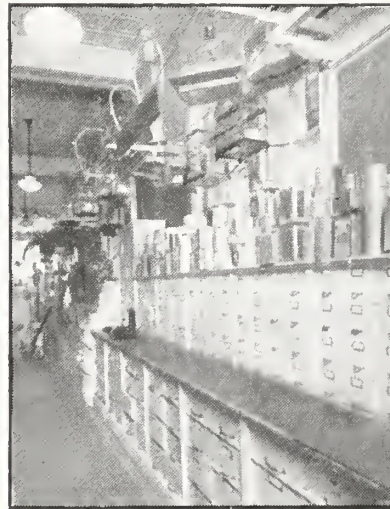
A birdseye view of our greenhouses where fresh flowers for our shop are cut daily. An interesting sight and well worth your inspection



A view of our perennial beds. All the plants we sell are field grown and perfectly hardy in this climate



At the left is shown a front view of our palatial flower shop. In the rear, there is a conservatory that you can wander through at your leisure. Below is our seed department and stock room



Our Special Messenger

Spring is here and again our Special Messenger greets you brimful of helpful garden suggestions and offering the finest in seeds and plants that can be obtained anywhere.

We are one of the most complete horticultural organizations in the country today and right at your door step. From us you can buy anything from a 10 cent package of seeds to a 100,000 dollar landscape planting.

Our organization includes—Flower Department—Seed and Bulb Department—Tree Conservation Department—Landscape Department—Perennial Department—Greenhouse Department and Nursery Department. Each of these boast of the most modern equipment and are headed by especially trained men who are qualified to give authoritative advice on any horticultural problem.

We wish to take this opportunity to thank our many satisfied customers for their continued patronage and hope that our special messenger will create new friends.



BASSI'S LAWN GRASS SEEDS

Noted for its beautiful permanent lawns of fine texture and its adaptability to various situations and soil conditions. The mixtures listed below are of general excellence, mixed, of the finest re-cleaned grasses, free from impurities.

All grass seed sent prepaid anywhere in the United States East of the Mississippi River. Prices of all grass seeds subject to market changes.

BASSI'S BEST GRASS SEED

In a comparatively short time this mixture will produce a perfect and permanent evergreen lawn, a rich deep green in color, and of a close, thickly matted texture. It contains a large percentage of Creeping Bent grass and some White Clover and is the ideal lawn seed. One pound is sufficient for 200 square feet, or a plot 10 feet by 20 feet.

Lb. 70c., 5 lbs. \$3.40, 10 lbs. \$6.60, 25 lbs. \$16.25, 100 lbs. \$60.00

"BASSI'S SPECIAL MIXTURE"

For parks, large areas and new lawns. We have compounded this special mixture, which will make a quick and even growth, free from weeds. With exception of above it is equal to any sold.

Lb. 55c., 5 lbs. \$2.60, 10 lbs. \$5.10, 25 lbs. \$12.25, 100 lbs. \$47.00

BASSI'S SHADY LAWN MIXTURE

Usually on most lawns there are bare spots underneath trees where grass is difficult to grow. For this we have an extra fine mixture composed of grasses, which in their natural state are found growing in the woods. It will produce a nice turf in very shady places in from four to six weeks.

Lb. 75c., 5 lbs. \$3.65, 10 lbs. \$7.10, 25 lbs. \$17.50, 100 lbs. \$68.00

BASSI'S PUTTING GREEN MIXTURE

A special bent formula for use on high grade putting greens. It is recommended for well prepared rich soils.

**Lb. 80c., 5 lbs. \$3.90, 10 lbs. \$7.70, 25 lbs. \$19.00,
100 lbs. \$75.00**

BASSI'S TERRACE SOD MIXTURE

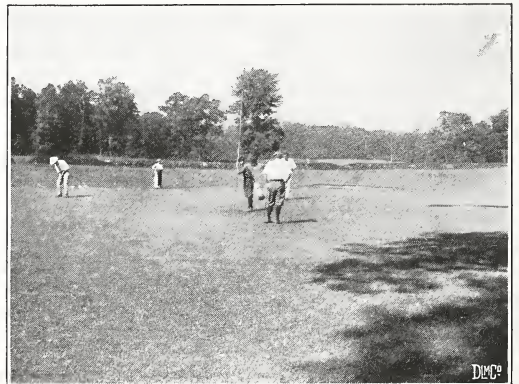
A mixture of strong, deep rooted grasses for banks and terraces. Although the grasses are strong and deep rooted; they will produce a fine, green velvety surface and also prevent washing away during heavy rains.

**Lb. 70c., 5 lbs. \$3.40, 10 lbs. \$6.60, 25 lbs. \$16.25,
100 lbs. \$63.00**

BASSI'S SEASHORE LAWN SEED

This mixture is selected for its deep rooting qualities and its resistance to salt spray and high winds.

**Lb. 70c., 5 lbs. \$3.40, 10 lbs. \$6.60, 25 lbs. \$16.25,
100 lbs. \$63.00**



BASSI'S TENNIS COURT GRASS SEED

This mixture is made up of deep-rooted, permanent grasses with a view to forming a close, dense turf which will stand being played on a great deal without showing any wear and tear. Sow 1 lb. to every 100 square feet.

Lb. 85c., 5 lbs. \$4.15, 10 lbs. \$8.20, 25 lbs. \$20.25,
100 lbs. \$80.00

WHITE CLOVER

Invaluable for lawns and especially useful where the heavy rains cause the seed to wash out. Our strain of White Clover is the best procurable, and will give the utmost satisfaction.

Lb. 75c., 10 lbs. \$7.00, 100 lbs. \$65.00

FOR THAT SOFT, VELVETY LAWN
USE BASSI'S BENT GRASS FORMULA LAWN SEED

Have a lawn like the Putting Green of Your Golf Course by using this wonderful grass mixture. Low, closely matted of fine texture and of a deep, rich green color, free from weeds. Made up of the best grades of bent grasses with a small percentage of high grade recleaned Red Top to use as a protection for the proper growth of the Bent grasses. For best results it is advisable to prepare the soil and have it well fertilized with well rotted manure, incorporated with Sulphate of Ammonia. Just as easy to make lawns from this mixture as with the regular grass mixtures but infinitely more satisfactory, and much cheaper in the long run. Sow at the rate of 1 lb. to 200 sq. ft.

Lb. \$1.50, 10 lbs. \$14.50, 100 lbs. \$140.00

Prices of all grass seeds subject to market changes.

BASSI'S GRASSES and CLOVERS

These yield fine stands for they are of high germination, fancy, recleaned, and of the best quality

CANADA BLUE GRASS (*Poa compressa*). Useful for sowing on hard clay and poor soils. Lb. 60c., 10 lbs. \$5.50, 100 lbs. \$45.00.

CHEWINGS NEW ZEALAND FESCUE (*Festuca Chewings*). One of the best and most highly recommended grasses for lawns and golf putting greens. Succeeds anywhere. Lb. 75c., 10 lbs. \$7.00, 100 lbs. \$63.00.

CRESTED DOGSTAIL (*Cynosurus cristatus*). Should be in every lawn grass mixture. Lb. 60c., 10 lbs. \$5.50, 100 lbs. \$45.00.

GERMAN CREEPING BENT (*Agrostis Species*). The finest grass for putting greens and lawns. For best results should be sown with double the quantity of Red Top grass seed. Lb. \$1.40, 10 lbs. \$13.50, 100 lbs. \$130.00.

PACEYS or ENGLISH RYE GRASS (*Lolium perenne*). A very rapid grower, excellent for lawns where a quick growing grass is needed. Makes a lawn in a month. Lb. 35c., 10 lbs. \$2.50, 100 lbs. \$25.00.

ITALIAN RYE GRASS (*Lolium italicum*). Thrives in any soil; used as an annual although it is a biennial. Lb. 35c., 10 lbs. \$2.50, 100 lbs. \$22.00.

KENTUCKY BLUE GRASS (*Poa pratensis*). The base of all lawn grass seeds and the best for lawns. Lasts indefinitely and improves with age. Lb. 80c., 10 lbs. \$7.50, 100 lbs. \$65.00.

ORCHARD GRASS (*Dactylis glomerata*). A fine grass for pasture or hay or for shady places. Lb. 45c., 10 lbs. \$4.00, 100 lbs. \$30.00.

RED, or CREEPING FESCUE (*Festuca rubra*), Fine for lawns or putting greens, forming a close soft sod. 100 lbs. \$90.00.

ROUGH STALKED MEADOW GRASS (*Poa trivialis*). A spreading, stoloniferous grass, fine for lawns and shady places. Lb. 85c., 10 lbs. \$8.00, 100 lbs. \$70.00.

RED TOP, RECLEANED (*Agrostis palustris*). One of the best grasses for lawns and golf courses; does exceedingly well on rich, moist soils. Invaluable for hay and permanent pasture. Lb. 70c., 10 lbs. \$7.00, 100 lbs. \$65.00.

SHEEPS FESCUE (*Festuca ovina*). Excellent for lawns, making a sod of short, heavy growth. Lb. 60c., 10 lbs. \$5.50, 100 lbs. \$45.00.

TIMOTHY (*Phleum pratense*). Invaluable for hay and pasture. High grade seed. Lb. 30c., 10 lbs. \$2.50, 100 lbs. \$18.00.

WOOD MEADOW GRASS (*Poa nemoralis*). The best grass for shady places; maturing early. Lb. \$1.20, 10 lbs. \$11.00, 100 lbs. \$100.00.

CREEPING BENT STOLONS

Prices on application.

FLOWER SEED NOVELTIES

ANTIRRHINUM nanum grandiflorum Majestic "Avalanche"

A grand addition to the Majestic class, bearing very large flowers of a shining, pure white on a spike of highly symmetrical shape. Of an ideal habit of growth, the snowy masses of this splendid variety make a marvelous display when employed for bedding.

Pkt. 50c.

ANTIRRHINUM nanum grandiflorum Majestic "Rose Beauty"

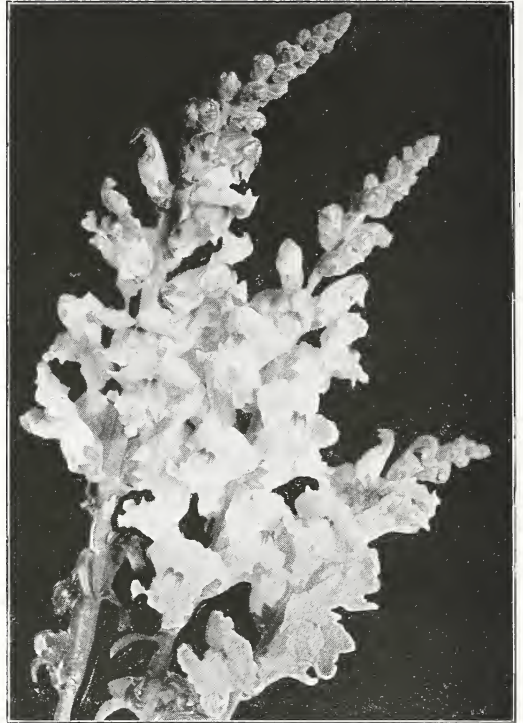
A variety of this shade has hitherto been wanting among the Majestic Antirrhinums. It is a charming pure rose pink self and makes a brilliant effect when massed in beds. Rose Beauty will be a welcome addition to this wonderful strain of Snapdragons.

Pkt. 50c.

ANTIRRHINUM nanum grandiflorum "Rosabelle"

This excellent new variety is of the early flowering type. Of bushy, compact habit, it bears on a handsome well formed spike large flowers of a rich carmine rose. As a bedding plant, it will be a worthy competitor to the popular variety Dazzler.

Pkt. 50c.



ANTIRRHINUM NANUM GRANDIFLORUM

ASTER

Alpinus albus giganteus

This new white Giant Alpine Aster attains a height of about 8-12 inches, according to the condition of the soil; blooms abundantly in May-June and is splendid for borders, rock gardens or also for cutting and pot work.

The flower is much larger than the old sort and bears a three-fourfold wreath of petals. The blooms are more beautiful and suitable for cutting and also stronger than the ordinary white Alpine-Aster.

Pkt. 35c.

SUNBALL ASTER

Dark Amethyst Blue

The Sunball-Aster newly introduced is dwarf, and round and of bushy growth, especially adapted for bedding and for pot work. The flowers are like those of the Sunshine Aster which is suitable for cutting and bears an outside wreath of graceful petals with a yellow center. The flowers are dark amethyst blue which harmonizes marvelously with the yellow center.

Pkt. 50c., 5 pkts. \$2.00



ASTER

ASTER-SURPRISE

"Salmongold"

(Annual)

When starting to flower it is pure salmon yellow colored; the fully developed blossom shows a radiating salmon pink shade. The single bloom is 2¾ to 3½ inches in diameter; it is of a noble, circular round form. A quite special advantage of the flowers is their long durability. The cut flowers remain in water quite fresh for 2 to 3 weeks.

Pkt. 35c., 5 pkts. \$1.50

ASTER

"Wartburg Star"

A new giant flowering strain of these popular Spring Asters. The bright lavender blue Marguerites, with yellow centers measuring more than 4 inches across, are borne on stalks 28 inches long and appear in flower even earlier than those of the well known varieties Artemis, Apollo, Floribundus, etc., and at the same time as the Aster Alpinus Superbus. Used alone or with white Marguerites and Gaillardia which are in flower at the same time, this giant, light blue Aster is extraordinarily effective for vases and table decorations, etc., and is especially acceptable during the end of May and June when other long stalked cutting flowers are scarce.

Pkt. 50c.

AQUILEGIA

Vulgaris compacta erecta, "Edelweiss"

(Perennial)

One of the earliest Spring flowers, this charming Aquilegia growing 16 to 20 inches high, covers its bushes with large, erect snow white blossoms; the very thing in conjunction with the light green foliage for awakening joy in the garden. Fine for the rock garden and perennial borders.

Pkt. 50c., 5 pkts. \$2.25

AURICULA ALPINE

"Triumph"

A giant strain of this favorite Spring flower, the blooms measuring from 1½ to 2 inches across. It is very floriferous and the flowers are borne on extra strong stalks, the colors arrange from dark crimson scarlet to cream color.

Pkt. 50c., 5 pkts. \$2.00

BEGONIA GRACILIS

"Carmen"

This new sort, is, in spite of the large number of new Begonia varieties, worthy to be added to the collection.

The very dark black brown leaves, the colors comparable to the leaves of the Purple Beech, or the Perilla, with the clear bright pink flowers have such a wonderful effect that this sort will certainly be much appreciated by the gardeners and lovers of flowers.

Pkt. 50c.

BEGONIA SEMPERFLORENS

"Striegau"

The first giant flowering Begonia semperflorens "Striegau." Grows up very strong and has a great likeness to the kind called "Liegnity." It reaches the height of about 10 inches; the size of the flower is on the average 2½ inches in diameter. Quite especially surprising is the large number of flowers each plant bears. The color is a rich and fiery carmine.

Pkt. \$1.00

BROWALLIA

Viscosa compacta. "Sapphire."

The very straggling habit of Browallia viscosa has always been a drawback, but our new form is a wonderfully compact little plant, not over 9 or 10 inches high, bearing sometimes over a hundred dark blue flowers with an eye suggesting a large flowered Lobelia. Commencing to bloom in July, it is of exceptional value for conservatory decoration.

Pkt. 50c.

CALENDULA

Officinalis flora pleno, "Radio"

(Annual)

In "Radio" we introduce a variety which is entirely new, having a distinct break in the formation of the flower. The petals are beautifully quilled, which has an extraordinary effect on the appearance of the flower, adding such beauty of form that it should be in everyone's garden. This formation of the petals gives an added sheen and warmth of tone that is very attractive. The flower is extremely globular in shape and does not show the "center" until in a very advanced stage.

Pkt. 25c., 5 pkts. \$1.00.

CALENDULA

Officinalis flore pleno. "Bolls Apricot"

Pkt. 35c.

CALENDULA

Officinalis flore pleno. "Cockade"

Bright orange; long stem.

Pkt. 25c.

CAMPANULA

Rotundifolia "Olympia"

This is a much larger flower than the ordinary Harebell, of a beautiful, deep lavender blue, of perennial habit and commencing to flower in June. Not exceeding 8 inches in height, it is of neat and compact habit and is most attractive both for bedding and as a pot plant.

Pkt. 50c.

EARLY FLOWERING AMERICAN CARNATION HYBRIDS

Shades of violet and purple, orange, salmon red, pink, some beautifully picoteed and striped; yellow, salmon, cream and pink ground colors blotched and interlined with orange, blue and purple. While they bloom profusely in the garden they will continue to flower right through the Winter if the plants are transferred to the greenhouse.

Pkt. \$1.00, 6 pkts. for \$5.00

Three Novel Types of Dahlias DAHLIA, COLTNESS HYBRIDS

(*Mignons*)

(*Annual*)

These pretty bedding Dahlias grow from 1 to 1½ feet in height with plants of a bushy habit. Producing flowers freely from seed the first year. The blooms are of the brightest colors and continue in flower from early July until destroyed by frost. It is easily grown from seed with a wonderful variety of colors in this selection. A novelty of great merit.

Pkt. 35c., 5 pkts. \$1.50.

DAHLIA, STARFISH STRAIN

(*Digoiner Star or Orchid Dahlia*)

A medium growing, single Dahlia, blooming the first year from Spring sown seed, its petals twisted in such a manner that the flower resembles a starfish in appearance. Blooms from early Summer until killed by frost. Includes many beautiful colors. A novel introduction for Dahlia lovers.

Pkt. 50c., 5 pkts. \$2.00.



DAHLIA, STARFISH STRAIN

HOLLYHOCK DELPHINIUMS

Bassi's Giant Hollyhock Strain

(*Perennial*)

This handsome strain is a fine mixture of all light shades, pale, clear blue predominating. The flowers are giant, truly double, well-placed on beautiful, long, pyramidal spikes, growing to a height of 6 feet. We highly recommend it to those who wish a select strain of this wonderful improvement in perennial Delphiniums.

Pkt. 35c., ¼ oz. \$2.50

DELPHINIUM ELATUM

"Iceberg"

This is the first white perennial Delphinium which comes true from seed. It belongs to the Elatum class and grows 48 inches high. The 20 inch spikes are thickly covered with large, pure white blooms. These plants are especially noted for their strong, healthy growth. They flower from June to August. In the second year when the plants are fully grown, the big white spikes are particularly beautiful and form an effective contrast to the dark and pale blue varieties. The "Iceberg" seedlings will be the starting point for creating splendid new varieties. Although great progress has been made with all blue shades of Delphinium, there is no other useful white variety beside Moerheimi.

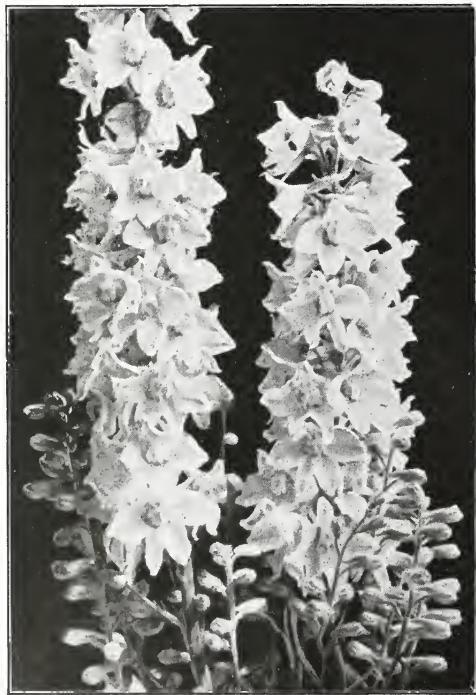
Pkt. 50c.

DIANTHUS

"Highland Queen" (*Perennial*)

The most brilliant perennial Dianthus in cultivation, bearing in profusion flowers of a lustrous scarlet vermilion color, which captivates the beholder at first sight. It is extremely hardy, of vigorous growth, and ideal for bedding, borders and the rock garden, continuing in bloom, as it does, from the end of May until November.

Pkt. 50c., 5 pkts. \$2.00.



DELPHINIUM ELATUM "ICEBERG"

DIANTHUS

Sweet Wivelsfield (*Perennial*)

A novelty recently introduced from England. The flowers can be described as multiflora type. It is very attractive and is becoming popular. Desirable for rock gardens.

Pkt. 35c., 5 pkts. \$1.50.

DIANTHUS NOBILIS

"Fireking"

DIANTHUS NOBILIS ALBUS

"Schneewittchen"

Dianthus nobilis "Royal Pinks" is known to be the most beautiful and largest flowering single *Dianthus*. Its nicely frilled and fringed petals give it a more pleasing appearance than you will find with the other single Indian Pinks. We have now segregated the splendid mixture into two colors which fall true to seed. The red sort "Fireking", has flowers of a bright crimson suffused velvety purple, whereas the sort "Schneewittchen" (Snow white Princess) is quite snow white. The new varieties are of compact growth and attain a height of about 8 inches.

Pkt. 35c.

ERIGERON DIVERGENS

Lovely delicate lavender; Daisylike flowers, about 3/4 inch in diameter, borne on long stems. It is the annual form of the well known *Erigeron*, and will be of great value for bedding and cutting. It can be sown in the open and blooms quickly from seeds.

Pkt. 50c.



ERIGERON DIVERGENS



DIANTHUS

New Frilled

ESCHSCHOLTZIA RAMONA

(*Annual*)

Among the many fancy varieties of *Eschscholtzia* introduced during the past year, *Ramona* stands out as a distinct and very charming type in the frilled class. It is a single, but the frills give it the appearance of a semi-double. The color is a pale but glittering coppery gold with pink shadings, and very pleasing to the eye. This unusually attractive novelty, which is well fixed, should be included in every collection.

Pkt. 25c., 1/4 oz. 75c.

GAILLARDIA GRANDIFLORA

"Burgundy"

(*Perennial*)

Sixty to 70 per cent pure red flowering plants can be counted on. *Burgundy* Gaillardia is most effective both in the perennial borders and when cut. Experts, both at home and abroad, have honestly admired this red *Gaillardia*.

Pkt. 35c., 5 pkts. \$1.50



GAILLARDIA "BURGUNDY"

GODETIA

Whitneyi azaleiflora fl. pl.
"Rembrandt"

This novelty attains the height of about 16 inches; is of compact and bushy growth, well double and blooms profusely.

The color of the flowers is of the pleasing bright pink of the well known Rose Neyron, and extends to the top margin of the petals.

The flower bears a great dark purple patch upon the ground of the petal. The combination of colors is very attractive and the flower presents a brighter and more fiery appearance than the original.

The simple culture of this variety is that of an annual. It is sown in the open ground or treated in a warm bed beforehand.

Pkt. 35c.

GODETIA GRANDIFLORA

"White Swan"

This new sort is an important improvement of the well known Godetia "Duchess of Albany."

"White Swan" is more dwarf, symmetrical, compact and larger flowering than the old sort and is of a perfect, clear satin white without any other shade. It surpasses by far the original in every way. It obtained an "Award of Merit" at the R. H. S. Gardens, Wisley, in the Summer of 1930.

Pkt. 35c.

HELIOPHYLLA LEPTOPHYLLA

This is an excellent plant for pots and borders, more compact than *Heliophylla lineifolia* and bearing larger flowers $\frac{1}{2}$ inch across. These are of a bright blue, intensified toward the center, with clear white eye. It is very floriferous and for the border should be planted 9 to 12 inches apart.

Pkt. 50c.

FOUR NEW VARIETIES OF PANSIES

Pansy Roggli; Lake of Thun

A striking blue Pansy with dark blue blotches.

Pkt. 60c.

Pansy Roggli; Cardinal (Alpenglow)

A beautiful cerise red.

Pkt. 60c.

Pansy Roggli; Golden Yellow

Pkt. 60c.

Pansy Roggli; Giant Mixed

This new variety is the result of years of thorough breeding. The flowers are flat, of excellent substance of immense size and the mixture shows outstanding and very attractive colors; mostly large blotched.

Pkt. 50c.

PETUNIA

New Dwarf Fringed California Giants
(Annual).

The most compact Giant Petunia with the largest and best formed flowers of any dwarf growing type of Fringed Petunia. When in full bloom the plant shows large, colorful flowers with open throats well marked and veined, making a very handsome effect.

Pkt. 50c., 5 pkts. \$2.00.

ICELAND POPPY (Nudicaule)

El Monte (Perennial)

This is a deep tangerine orange selection from some giant hybrids. The flowers are of enormous size, twice the size of the Sunbeam strain, borne on long, wiry stems. It comes true to color, is extremely easy to grow and can be produced in six months from seed. It is fine for cutting.

Pkt. 50c., 5 pkts. \$2.00.

PAPAVER

Somniferum laciniatum fl. pl.
dark plum violet

The Collection of the Feathered Poppies is enriched with a distinct, attractive new color by this novelty. The color is hard to describe; being a dark plum violet on a lilac violet ground.

The peculiar, deeply fringed and feathered flowers of this Poppy always attract the attention of the lover of Poppies who will like such a cut flower of a color out of the common, which besides is easily cultivated by open ground sowing.

Pkt. 75c.

NEW HARDY PERENNIAL SCABIOSA

Columbaria Giant Pink (Perennial)

This is a South African form of the popular European Scabiosa and although reminiscent of *Caucasica*, is a distinct type. There is a decided place for this on the perennial border. It can be briefly described as a hardy, low growing perennial with fine, handsome, light green foliage, some of the flowers measuring from 2 to 2 $\frac{1}{2}$ inches across with short, compact petals borne on long, slender but strong stems.

Pkt. 35c., 5 pkts. \$1.50.

STREPTOCARPUS

Hybrid Grandiflora "Caritas"

The large flowering Streptocarpus hybrids are not cultivated and offered for sale as much as they deserve to be. They possess excellent qualities; are easily grown, flower for a long period and produce most gloriously colored blooms. "Caritas" supplies the perfect white among the separate varieties which come true from seed. It is distinguished by large, dazzling white flowers which together with the fresh green foliage make the plant most attractive.

Pkt. 75c.

VENIDIUM FASTUOSUM

(Annual)

Its brilliant orange flowers, 4 inches across, with shining black centers, are placed to perfection in a setting of a soft gray, woolly foliage, making this a desirable and indeed brilliantly showy plant in the garden, and a most desirable flower for cutting. It needs a warm soil for quick germination and it is best to start the seed in a hotbed in March or April; outside, it should not be sown until May, when the ground is warm. The plants branch freely and will bloom abundantly in less than three months from seed. Received Award of Merit, R. H. S. England.

Pkt. \$1.00, 6 pkts. for \$5.00

FLOWER SEEDS (Annuals)

ADONIS ALEPPICA

(The Syrian Flos Adonis)

The plant is pyramid shaped and grows 16 to 20 inches tall, strongly ramified and produces numerous round flowers measuring about 3 inches across. The color of the flower is a shining, deep dark blood red of greatest brilliancy. **Pkt. 25c.**

AMARANTHUS

Suitable for subtropical gardens and borders where the brilliant foliage is most effective. **Pkt.**

- Caudatus** (Love-lies-bleeding). Drooping crimson racemes. 3 ft. \$0.10
- Tricolor splendens** (Josephs-coat). Red, scarlet, and yellow. 2 ft.15
- Salicifolius** (Fountain Plant). Of long, graceful foliage with long, narrow leaves in shades of green, bronze, etc.25

AGERATUM

One of the most popular half hardy annuals for bedding, edging, or pots. They bloom throughout the Summer. The taller varieties are excellent for bouquets. **Pkt.**

- Blue Perfection.** Dark blue; large, 1 ft. $\frac{1}{4}$ oz. 50c. \$0.10
- Little Dorrit Blue.** Dark blue, habit very dwarf; fine bedding variety. 8 in.15
- Little Dorrit White.** 8 in.15
- Little Blue Star.** A miniature variety with beautiful, mauve-colored flowers. Compact habit. 5 in.25

ALYSSUM

- Lilac Queen.** An entirely new and distinct annual Sweet Alyssum, with beautiful, pure lilac flowers. Compact habit. 6 in. \$0.25
- Tom Thumb, or Little Gem.** Splendid for borders. 6 in. $\frac{1}{2}$ oz. 40c. .10
- Carpet of Snow** (White Carpet). The lowest growing variety, of creeping habit, forming literally a carpet of snow. Pure white; 4 inches high. $\frac{1}{2}$ oz. 60c. .10

ANCHUSA

- Blue Bird.** Annual. Has beautiful, blue, Forget-me-not-like flowers on sprays about 18 in. long. It is a continuous bloomer and fine for cutting. \$0.20

ANTIRRHINUM (Snapdragon)

BASSI'S NEW GIANT SNAPDRAGONS

In seven beautiful colors. Taller and more robust in growth than any giant variety heretofore offered. Grows to a height of 4 feet, with flowers closely packed on the stems. **Pkt.**

- Apple Blossom.** Rose pink, white tube. \$0.35
- Canary Bird.** Canary yellow.35
- Copper King.** Bronze copper, very attractive. .35
- Indian Summer.** Velvety copper.35
- Cattleya.** Rosy lilac.35
- Old Gold.**35
- Purple King.** Deep garnet.35
- The Rose.** Begonia rose.35
- Snowflake.** White.35
- Giant Mixed.** 3 for 60c. .25

Collection—1 pkt. each of the 9 named varieties above, \$2.75



BASSI'S NEW GIANT ANTIRRHINUM (SNAPDRAGON)

LARGE FLOWERING MEDIUM GIANT VARIETIES

- Growing about 30 inches tall. **Pkt.**
- Evening Sky.** Soft salmon rose, yellow mouth. \$0.15
- Harmony.** Rose pink, white lip.15
- Moonlight.** Golden apricot and old rose.15
- Orange Beauty.** Orange scarlet and gold lip. .15
- Othello.** Iris violet.15
- Feltham Beauty.** Rose pink, white tip.15
- Collection—1 pkt. each 6 varieties, 75c.

LARGE FLOWERING DWARF VARIETIES

Best for bedding purposes. Height 18 inches. **Pkt.**

- Prima Donna.** Salmon pink and yellow. \$0.15
- Empress.** Rich velvety crimson.15
- Golden Queen.** Rich golden yellow.15
- Climax.** Rich orange, shaded gold.15
- Melody.** Chamois with rose.15
- Maize Queen.** Salmon maize.15
- Collection—1 pkt. each 6 varieties, 75c.

SNAPDRAGONS SUITABLE for GREENHOUSE

- Selected seed from varieties under glass. **Pkt.**
- Jennie Schneider.** Clear salmon pink. \$1.00
- Orlando.** Beautiful shade of bronze.25
- White Rock.** Tall snowy white.75
- Penn-Orange.** Bright orange, yellow and pink shading.75
- Ceylon Court.** Yellow. A beautiful Canary Yellow. 2.00
- Golden Pink Queen.** A fine commercial variety. 1.00
- Roman Gold.** A deep golden yellow, lip, lighter yellow suffused copper hue. 1.50

ARCTOTIS

Pkt.

Grandis (Blue African Daisy). The petals are white on the surface and pale lilac on the reverse side, while the center of the flower is blue. The plants attain a height of 2 to 3 feet, with long flower stems growing away from the rest of the plant. \$0.15

BASSI'S MIXED ANNUAL FLOWER SEEDS

A fine mixture of over 50 intermediate annuals in a splendid diversity of colors, composed of early and late flowering varieties, giving a succession of bloom all Summer.

Oz. 25c., ¼ lb. 50c., lb. \$1.75

BASSI'S AMERICAN ASTERS

NEW ASTERS, GIANTS OF CALIFORNIA

New type of Aster that flowers exceptionally large, making flowers 5 inches across. It is distinctive of the Ostrich Plume type, with branching habit and long stems, growing to a height of 3½ feet.

- | | |
|---|--------|
| | Pkt. |
| Pure White | \$0.25 |
| Peach Blossom . Opens as a white and darkens with age. | .25 |
| Light Blue . Delicate blue. | .25 |
| Light Purple | .25 |
| Deep Rose . American Beauty Rose color. | .25 |
| Dark Purple | .25 |
| Mixed Colors 3 pkts. for 50c | .20 |
| Collection—1 pkt. each of the above 6 colors, \$1.25. | |

INVINCIBLE BRANCHING

One of the best late flowering branching sorts, of robust habit, grows 2½ to 3 feet high. Flowers of large form and very double.

- | | |
|-----------------------------------|--------|
| | Pkt. |
| White | \$0.15 |
| Rose | .15 |
| Flesh Pink | .15 |
| Crimson | .15 |
| Purple | .15 |
| Lavender | .15 |
| Mixed ¼ oz. 75c. | .15 |

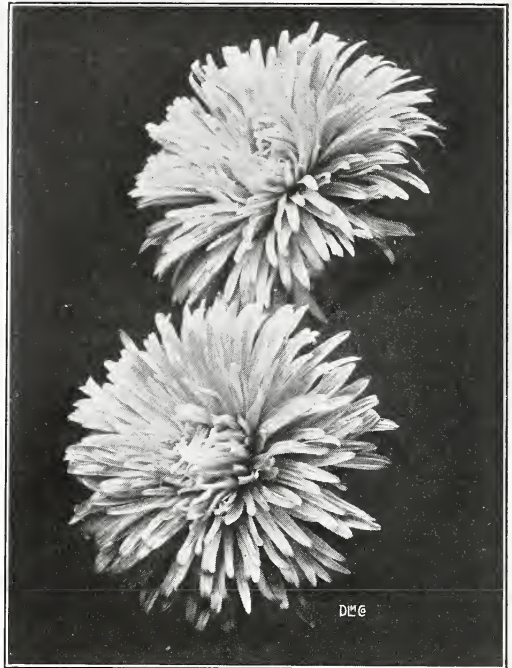
Collection—1 pkt. each of the above 6 colors 75c.

ASTERS, AMERICAN BEAUTY

This type of Aster commences to bloom in early September and lasts until destroyed by frost. The flowers are very large and are borne on stout stems from 18 to 24 inches. The plants are of branching habit and reach a height of 2 to 3 feet.

- | | |
|---|------|
| | Pkt. |
| Rose Lavender Purple | |
| Crimson Pink White | |
| Any of the above. \$0.20 | |
| Mixed ¼ oz. 75c. | .15 |

Collection—1 pkt. each of the above 6 colors, \$1.00



AMERICAN BEAUTY ASTERS

THE FIVE KING ASTERS

(Needle Type)

Of upright habit, about 2 feet high. Flowers large and double. Petals quilled, making them distinct from all others.

- | | |
|--|------|
| | Pkt. |
| White King Crimson King Violet King | |
| Shell Pink King Lavender King | |
| Any of the above. \$0.15 | |
| King Mixed ¼ oz. 75c. | .15 |
| Collection—1 pkt. each of the above 5 King Asters, 60c. | |

QUEEN OF THE MARKET

Very early, with medium-sized blooms borne on long stems. The plants flower from three to four weeks earlier than the large-flowered kinds. 18 inches high.

- | | |
|---|------|
| Rose Dark Blue Crimson Lavender | Pkt. |
| Any of the above. \$0.10 | |
| Mixed ¼ oz. 75c. | .10 |

Collection—4 colors, separate, 35c.

**New Types and Forms of Asters
PEERLESS YELLOW ASTERS**

At last a real yellow Aster. It has been difficult to get a good yellow Aster. This can be described as of branching habit, height about two feet, flowers of good size and form, with petals slightly incurved. The color is a deep yellow when first opened, fading slightly as it ages.

Pkt. 35c. each, ¼ oz. \$1.50.

CALIFORNIA SUNSHINE ASTERS

or Anemone Flowered Asters

Flesh, Pink, Carmine, Lavender and Violet.
Pkt. 25c. each, ¼ oz. \$1.00.

Collection 1 pkt. each color, 5 varieties, \$1.00.



BALSAM (LADYSLIPPER)



CALLIOPSIS



CALENDULA

ASTERS (Single Giants)

Single White.....	Pkt.	1/4 oz.
Single Rose.....	25c.	75c.
Single Light Blue.....	25c.	75c.
Single Purple.....	25c.	75c.
Single Finest Mixed.....	20c.	50c.
Collection 1 pkt. each of the 4 above named varieties	75c.	

BALSAMS (Ladyslipper)

An old favorite garden flower, producing beautiful, brilliant colored, double flowers, growing to a height of 2 feet.

White. Large, double, white.....	Pkt.	\$0.10
Scarlet. Glowing, fiery scarlet, large, double flowers.....	.10	
Rose. Large, double flowers.....	.10	
Chamois Rose.....	.10	
Mixed.....	.10	

Collection—1 pkt. each of the above 4 colors, 35c.

BEGONIAS

EVERBLOOMING BEDDING VARIETIES

These varieties of Begonias rank as bedding plants with Geraniums and Coleus. They are of sturdy growth, about 1 foot high, and form dense bushes which, from May until frost, are completely hidden with flowers. As pot plants for Winter flowering, they are superb. They will do well in shady places.

Gracilis, Prima Donna. Carmine-rose.....	Pkt.	\$0.25
Gracilis luminosa. Brilliant dark scarlet; very effective. Reddish brown foliage....	.25	
Semperflorens Vernon. Bright orange carmine; red foliage.....	.15	
Pink Erfordi. Carmine-rose, dark foliage; the best for beds and borders.....	.25	

TUBEROUS ROOTED

Select mixtures from the best strains.

Giant Single Mixed.....	Pkt.	\$0.35
Giant Double Mixed.....	.50	

BRACHYCOME

Pkt.

Iberidifolia (Swan-river-daisy). Bushy plants blooming all Summer; pretty blue and white single flowers on slender stems. Useful for edging and borders. 12 in..\$0.25

CALCEOLARIA Covent Garden Strain

Pkt.

Grandiflora Mixed. A giant, heavily flowered strain; finest colors and robust growth. The best for greenhouse and pot culture..\$0.50

CALENDULA

Pkt.

Campfire. A forcing Calendula. The blooms are flat and larger than those of any type previously introduced. The petals are a brilliant orange with a scarlet sheen\$0.25

Orange King. Large, dark orange, double flowers..... 1/2 oz. 30c. .10

Lemon Queen. Clear lemon-yellow, double flowers..... 1/2 oz. 30c. .10

Calendula Bassi's Ball. A fine variety for greenhouse and commercial use..... 1/4 oz. 75c., 1/2 oz. \$1.40, oz. \$2.50 .25

Bassi's Orange Ball. Produces mammoth orange flowers very double and rich color. 1/2 oz. 75c. .25

Meteor. Creamy white, orange stripes..... 1/2 oz. 30c. .15

Riviera Orange. An attractive orange novelty 1/2 oz. \$1.00 .25

Mixed. All varieties..... Oz. 40c. .10

CALLIOPSIS

Bloom all Summer and are excellent for cutting and massing. Sow seed where the plants are to bloom, thinning out to stand 6 to 12 inches apart. Pkt.

Atrosanguinea. Dark red. Fine for cutting. 1 ft.....\$0.15

Crimson King. Rich velvety crimson. 1 ft. .10

Golden King. Golden yellow, garnet eye. 1 ft. .10

Golden Ray. Maroon, edged gold, twisted petals. 10 in..... .10

Tiger Star. Reddish brown tiger yellow. 10 in. .15

Finest Mixed..... 1/2 oz. 30c. .10



CELOSIA (CHINESE WOOLFLOWER)

CANARY BIRD VINE

Clear sulphur yellow. Flowers appearing in the distance like tiny canary birds (Nasturtium foliage). Useful for decorating stumps, fences, or trellises. Grows to a height of about 10 feet. Rapid growth. Pkt. 10c.

CANDYTUFT (Iberis)

Empress, or Giant White Hyacinth Flowered. A grand variety, producing enormous spikes of bloom, resembling a white Hyacinth. Spikes often measure 7 in. long by 2 1/4 in. in diameter 1/2 oz. 50c. \$0.15

Crimson Flesh Lilac Rose
Any of the above. 1/2 oz. 75c. .15

Mixed Oz. 50c. .10



ANNUAL CHRYSANTHEMUMS, DOUBLE FLOWERING

CARNATIONS

Chabaud's Everblooming. Blooms in five months after being sown, and continues to flower in the greatest profusion indefinitely. 18 in. Mixed colors. 5 pkts. \$1.00 \$0.25

GIANT MARGUERITE CARNATIONS

These begin flowering in July or August if sown early in the Spring. The strain offered is of extra fine quality, producing an abundance of large, double, beautifully fringed, highly scented flowers. 18 inches.

	Pkt.
Giant White	\$0.25
Giant Pink25
Giant Yellow25
Giant Scarlet25
Giant Mixed25

CARDINAL CLIMBER

A beautiful annual climber of delicate foliage, growing to a height of 20 feet, with large flowers blooming profusely and continuously throughout the Summer. Pkt. 15c.

CELOSIA (Cockscomb)

They make showy border plants and are attractive for pots. Seed can be sown under cover in early Spring and planted out in May. If dwarf growth is desired, do not crowd.

CELOSIA CRISTATA (Cockscomb)

	Pkt.
Glasgow Prize. Dark crimson; 1 ft.	\$0.25
Golden Queen. Yellow.....	.15
Dwarf Mixed. 1 ft.10

CELOSIA PLUMOSA (Feathered Cockscomb)

Very large, showy plumes of pyramidal growth, attaining a height of 3 feet.

	Pkt.
Ostrich-plumed Crimson	\$0.15
Ostrich-plumed Yellow15
Ostrich-plumed Mixed15

CHINESE WOOLFLOWER

Differs from the above Celosias, for it forms large, globular flower heads. Grows to a height of 3 feet. Very effective for massing.

	Pkt.
Scarlet	\$0.20
Yellow20

CENTAUREA

IMPERIAL SWEET-SULTAN

Fringed blossoms 3 to 4 inches across. The colors vary by way of contrast in individual flowers, such as violet with white center, etc.

	Pkt.
Brilliant Rose	\$0.25
Delicate Lilac25
Satiny White25
Rich, Dark Purple25
Deep Lavender25
Amaranth Red25
Giant Mixed	1/4 oz. 75c. .25

Collection—1 pkt. each of the above 6 varieties, 75c.

CENTAUREA CYANUS

(Cornflower, Bluets, Bachelor Button)

Sow seed broadcast wherever you want them to grow. When danger from frost is over, make sowings every three weeks for continuous bloom. 3 ft. Pkt.

Double Blue. Large double flowers of fine blue.....	1/4 oz. 40c. \$0.15
Double Rose	1/4 oz. 50c. .15
Double White	1/4 oz. 50c. .15
Double Mixed	1/4 oz. 35c. .15

ANNUAL CHRYSANTHEMUMS

SINGLE FLOWERING VARIETIES

Evening Star. Covered with large, single golden yellow flowers.....	Pkt. \$0.10
Morning Star. Large, creamy yellow flowers.....	.10
North Star. Single giant flowers of white, with a soft yellow zone contrasting effectively against the bold black disc.....	.10

DOUBLE FLOWERING VARIETIES

Mixed Double Annual Varieties..... \$0.10

CINERARIA

- Pkt.
Semi-dwarf Giant Flowering Varieties, Mixed. 1 ft. high.....\$0.50
Giant Flowering Tall Prize Varieties Mixed.
 Taller and larger than the above, with a fine range of color. 1½ ft. tall..... .50
Grandiflora Stella. A fine greenhouse variety, with large, narrow, twisted petals. Height 1½ ft..... .50

CLARKIA

- Pkt.
Double Chamois Queen. Pale rosy pink..\$0.15
Double Carmine Queen..... .15
Double Salmon Queen. Salmon pink..... .15
Double Scarlet Queen. Fiery scarlet..... .15
Double Rose Queen. Brilliant rose..... .15
Double Purple Prince..... .15
Double Mixed.....¼ oz. 50c. .10
Collection—1 pkt. each of the above 6 colors,
 75c.

COBAEA

- Pkt.
Scandens, Blue. Rapid growing climbers, with large, bell-shaped flowers, reaching a height of 20 to 30 ft. Useful for covering walls, arbors, etc. Plant seed edgewise....\$0.10

COLEUS

- Pkt.
Finest Giant Mixed.....\$0.25

CYCLAMEN

- Pkt.
Bassi's Giant Mixed. A special strain of giant flowering choicest varieties in rich colors. Exceptional variety for greenhouse or conservatory. 1 ft. high.....\$0.50

COSMOS

EXTRA EARLY GIANT FLOWERING DWARF
 Begins blooming in June and flowers until frost with blooms 3 inches across. Maximum height, 4 feet. Forms compact bushes. Very desirable.

- Pkt.
White.....¼ oz. 30c.\$0.10
Pink.....¼ oz. 30c. .10
Crimson.....¼ oz. 30c. .10
Early Flowering Mixed.....¼ oz. 25c. .10

GIANT LATE FLOWERING

- Pkt.
Lady Lenox, Pink.....¼ oz. 30c.\$0.10
Lady Lenox, White.....¼ oz. 30c. .10
Lady Lenox, Crimson.....¼ oz. 30c. .10
Lady Lenox, Finest Mixed.....¼ oz. 25c. .10

EXTRA EARLY DOUBLE CRESTED

A graceful plant that flowers 3 to 4 inches across, with large, broad outside petals; crested center, with a mass of smaller petals lending a charming effect.

- Pkt.
Crested White Beauty.....¼ oz. \$1.00 \$0.35
Crested Pink Beauty.....¼ oz. 1.00 .35
Crested Crimson Beauty.....¼ oz. 1.00 .35
Crested Mixed Beauty.....¼ oz. .75 .35

Hollywood Star. The flowers are pink, red and white, borne on long stems and very useful for cut flowers and very attractive.....
 ¼ oz. \$1.00, .25

CYNOGLOSSUM

(Summer Forget-me-not)

- Amabile Blue**..... Pkt. 25c.
Amabile White. White form of above.... Pkt. 25c.

DAHLIA

- Pkt.
Double Varieties, Mixed. Choice varieties.\$0.25
Cactus Varieties, Mixed. Finest varieties. .25
Single Dwarf Giants. This is a medium-dwarf, single Dahlia which we can thoroughly recommend as a beautifully large flowered and bright colored variety to grow from seed. The average height is 2½ feet. The habits of this variety are the same as above.....
 5 pkts. \$1.50, .35

SINGLE DWARF GIANTS

This is a medium-dwarf, single Dahlia which we can thoroughly recommend as a beautifully large flowered and bright colored variety to grow from seed. The average height is 2½ feet. The habits of this variety are the same as above.

Pkt. 35c., 5 pkts. \$1.50.

DIANTHUS (Pinks)

- Pkt.
Bassi's Single Chinese Pinks....¼ oz. 50c.\$0.10
Bassi's Double Chinese Pinks....¼ oz. 50c. .10
Laciniatus, Single Fringed.....¼ oz. 50c. .10
Laciniatus, Double Fringed.....¼ oz. 50c. .10

DIDISCUS (Blue Laceflower)

The plants come to a height of 2 feet and produce graceful foliage with bluish flowers resembling the wild Carrot. Pkt. 25c.



COSMOS

DIMORPHOTHECA
(African Golden Daisy)

- Aurantiaca.** Brilliant glowing orange blossoms with black disc. 1 ft. ¼ oz. 60c. \$0.10
- Aurantiaca Hybrids.** New selected hybrids in splendid mixture. In a variety of colors from white, red, orange, salmon and sulphur, etc. 1 ft. ¼ oz. 75c. .15
- Ringens.** The individual flowers are large white on the inside with a very conspicuous blue ring around the center of the eye.25
- Ringens, Double.** This is a double form of the beautiful single Dimorphotheca with a blue circle around the eye. The crest or double part is grey, not blue. This is rather unique, and the crest of the petals in the center keeps the flower open all day. The single type closes at midday. 5 pkts. \$2.00. .50
- Salmon Beauty.** A new color in African Daisy. True salmon shade. 5 pkts. \$1.00. .25

ESCHSCHOLTZIA (California-poppy)

- Golden West Mammoth.** Flowers of intense shining yellow. Pkt. \$0.10
- Carmine King.** Deep carmine.10
- Orange Flame.** Vivid orange scarlet.10
- The Geisha.** The inside petals brilliant gold, outside fluted, colored orange crimson.10
- Tango.** Bronzy red overlaid terra cotta.20
- Mandarin.** Inside petals orange; outside scarlet.10
- Finest Mixed.** ¼ oz. 30c. .10

DOLICHOS

- Lablab** (Giant Hyacinth-bean). Grows to a height of 10 ft. Pkt. \$0.10

EUPHORBIA

- Variegata** (Snow-on-the-mountain). ¼ oz. 60c. \$0.15
- Heterophylla** (The Annual Poinsettia). Forms bushes 2 to 3 ft. tall, resembling the Christmas Poinsettia.15



DIMORPHOTHECA AURANTIACA (AFRICAN GOLDEN DAISY)

GAILLARDIA (Blanket Flower)

- Amblyodon.** Rich blood red. Pkt. \$0.15
- Lorenziana.** Double flowering mixed, large blooms finely colored. ¼ oz. 40c. .10

GERBERA (Transvaal Daisy)

A beautiful, Daisy-like blossom of exquisite coloring. The large flowers, about 4 inches across, have fine, narrow petals. Pkt. 50c.

GLOXINIA

- Blackmore and Langdon's Improved English Strain** Pkt.
- Giant Mixed.** A superb class of giant size and richest colors. \$0.50

GLOBE-AMARANTH
(Gomphrena)

- Showy annuals forming bushy plants. The blooms can be used for dried Winter bouquets. 2 feet. Pkt.
- Rose, Purple, White.** Each \$0.10
- Finest Mixed.**10

GODETIA

- An attractive, hardy annual, of compact growth, profusely flowered with blooms 3 to 4 inches across. The exquisite colors are tinged with a sheen of satin. Very showy when grown in beds or masses. 1 foot. Pkt.
- Double Mixed.** \$0.15

GOURDS

(Ornamental Mockorange)

- Rapid of growth, bearing fruit of varied shapes; dippers, pears, bottles, spoons, pipes, etc., desirable for trelliswork, fences or stone walls. 10 to 20 feet. Pkt.
- Mixed Varieties.** Oz. 30c. \$0.10
- 1 Collection Gourds, 12 separate varieties, 75c.
- 1 Collection Gourds, 6 separate varieties, 40c.

GREVILLEA

- Robusta** (Silk Oak). A pretty little shrub with delicate, fern-like foliage which can be grown in the greenhouse or outdoors as an annual. \$0.15

GYPSOPHILA (Babysbreath)

- Elegans grandiflora.** Pure white. ½ oz. 30c. \$0.10
- Elegans rosea.** Delicate pink. ½ oz. 30c. .15
- Carminea Crimson.** ½ oz. 30c. .15

ORNAMENTAL GRASSES

Collection, 12 varieties, 75c.

HELICHRYSUM (Strawflower)

- Snowball.** Silvery white. Pkt. \$0.15
- Rose Queen.** Carmine rose.15
- Salmon Queen.** Salmon pink.15
- Fireball.** Scarlet.15
- Violet Queen.**15
- Golden Ball.** Golden yellow.15
- Finest Mixed Colors.** ¼ oz. 30c. .15

Collection—1 pkt. each above 6 named varieties, 75c.

HONESTY (*Lunaria biennis*)

Although a biennial it can be grown as an annual. The shiny silvery seed pods are everlasting and may be arranged as Winter bouquets.

White.....Pkt. \$0.15

HELIOTROPE

Queen Marguerite, Large Sweet. Dark blue. Pkt. \$0.25
Dwarf Giant Flowered Mixed. Compact and profuse blooming..... .25

HOLLYHOCK
(Annual Everblooming)

Mixed Colors.....Pkt. \$0.15

HUMULUS

Japonicus (Japanese Hop). A most ornamental and rapid growing climber, useful for covering arbors, verandas, etc. Immune to insect pests. ½ oz. 50c. \$0.10

HUNNEMANNIA
(Giant Yellow Tulip Poppy)

Height 2 feet. Pkt. 15c., ½ oz. 50c.

KOCHIA

Trichophylla (Summer-cypress or Belvidere). 3 feet. Pkt. 15c. \$0.10
¼ oz. 25c.

LARKSPUR (Annual Delphinium)

TALL DOUBLE BRANCHING VARIETIES Pkt.
Light Blue..... \$0.15
Purple..... .15
Flesh Pink..... .15
White..... .15
Newport Pink. Rose..... .15
Lustrous Carmine..... .15
Mixed Finest..... ½ oz. 50c. .10

Collection—1 pkt. each of 6 varieties listed above, 75c.

¼ oz. of any of the above colors, 35c.

Los Angeles. In Los Angeles we have the same rich salmon ground overlaid with a brilliant and pleasing rose. The type of growth is similar to La France, but the foliage of Los Angeles is a much darker green, making the large, double flowers stand out more prominently. Pkt. 25c., 5 pkts. \$1.00.

“Exquisite.” A handsome new Larkspur of delicate soft pink. 5 feet. Pkt. 25c., 5 pkts. \$1.00.
Emperor Double Stock Flowered “Pink Delight.” Of the same color as the above, but grows to only 2 feet. Pkt. 25c., 5 pkts. \$1.00.

GIANT HYACINTH FLOWERED DOUBLE LARKSPUR

Indigo.....Pkt. \$0.25
Rose..... .25
Brick Red..... .25
Violet..... .25
Reddish Gray..... .25
White..... .25

Collection—1 pkt. each of above 6 colors, \$1.25.



LARKSPUR (ANNUAL DELPHINIUM)

LAVATERA

Splendens, “Sunset.” The plants, 3 feet in height, form branching, compact bushes, bearing large, shallow, bowl-shaped rich rose pink flowers throughout the Summer. The foliage is bronzy green with cutting stems 2 feet long. ¼ oz. 30c. \$0.10

LOBELIA

Emperor William. Light blue, compact. Very fine. 4 in. ½ oz. 50c. \$0.15
Crystal Palace compacta. Dark blue. A popular bedder. 4 in. ½ oz. 50c. .15
Trailing Sapphire. Trailing variety, suitable for hanging baskets, purplish blue flowers with white edge..... .20

LUPINUS (Annual Lupines)

Dark Blue.....Pkt. \$0.10
Rose..... .10
Sulphur Yellow..... .10
White..... .10
Mixed..... ½ oz. 35c. .10

Collection—1 pkt. each of above 4 colors, 30c.

MARIGOLD

Two Improved French Dwarf Marigolds

MARIGOLD ROBERT BEIST

A new dwarf French Marigold, Orange and Brown, very attractive and distinctive. A wonderful acquisition for bed or borders or for pot plants. Pkt. 25c., ½ oz. 75c.

MARIGOLD FIRE CROSS SINGLE

An improvement over Legion of Honor, a much brighter color and more attractive, and makes a good bedding plant. Also fine as a pot plant. Pkt. 25c., ½ oz. 75c.

MARIGOLDS—Continued

DWARF FRENCH VARIETIES Pkt.
Double Gold Striped. Rich maroon striped yellow. 18 in. \$0.15
Little Brownie ("Legion of Honor"). Single, bright yellow blotched with brown. 18 in. ¼ oz. 30c. .10

DOUBLE DWARF FRENCH Pkt.
Mixed ½ oz. 40c. \$0.10

TALL AFRICAN VARIETIES Pkt.
Double African Orange. Beautiful orange color. Giant blooms. 3 ft. ¼ oz. 40c. \$0.10
Double African Lemon. Giant blooms. 3 ft. ¼ oz. 40c. .10
Double African Mixed. Shades of orange and lemon. ¼ oz. 30c. .10

MARVEL OF PERU Pkt.
 The old fashioned Four-o'clocks. Easily grown. Oz. 25c. \$0.10

MATRICARIA (Double Feverfew) Pkt.
Golden Ball. Double golden yellow. \$0.25
Silver Ball. Double white, a fine contrast for the above.25

MATTHIOLA Pkt.
Bicornis (Evening-scented Stock). 18 in. \$0.15

MIGNONETTE (Reseda) Pkt.
Defiance. Splendid for outside and greenhouse culture. ½ oz. 50c. \$0.15
Selected Red Goliath. The strongest and finest grower. ½ oz. 50c. .15
Sweet Scented. Your old-fashioned, fragrant garden friend. oz. 40c. .10



MARIGOLD, DOUBLE AFRICAN ORANGE

MIMOSA Pkt.

Pudica (Sensitiveplant). An odd foliage plant. The leaves if touched roll up immediately. It is strictly ornamental. 1½ ft. \$0.15

MOONFLOWER Pkt.

Giant White. Produces vines to the height of 60 ft., with large, heart-shaped leaves. Is covered with saucer-shaped white flowers, blooms all night until daylight. The Moonflower likes a warm, sunny location. ½ oz. 50c. \$0.10

MORNING-GLORIES (Ipomoea) Pkt.

Imperial Japanese. The best in Morning-glories, with the most remarkable range of colors, forming large, strong plants, with flowers 3 to 4 in. across, some fluted and frilled. Oz. 40c. \$0.10

Heavenly Blue. Beautiful light blue flowers, about 2 in. across. Bloom about July and continue to frost. Sow seed outside early in Spring. ¼ oz. 40c. .15

Brazilian Morning-glories. Clusters of rose flowers. The best for arbors, piazzas, etc. ½ oz. 30c. .15

Convolvulus major. Old-fashioned Morning-glory. Oz. 25c. .10

MYOSOTIS (Forget-me-not) Pkt.

Alpestris Victoria. Compact bushes, 8 in. high, covered with clusters of large flowers. 9 in. ½ oz. 50c. \$0.10

Ruth Fischer. Pale blue flowers about 1½ in. across, forming compact bushes with dark green foliage.25

Marga Sacher. A new variety and an improvement over the last, with larger plants and blooms. 10 in.35

NASTURTIUMS

BASSI'S GIANT FLOWERING Pkt.
Dwarf Giant Mixed. Bushy plants, about 1 ft. high in a great variety of colors. Sow seed in the open where you want it to grow. Pkt. 10c., oz. 20c., ¼ lb. 60c., lb. \$2.00, \$0.10

Tall Giant Climbing Types. Grows to a height of 15 ft. Useful for covering arbors, piazzas, trees, etc. Pkt. 10c., oz. 20c., ¼ lb. 60c., lb. \$2.00, .10

NEMESIA

Pretty, neat flowering hardy annual, of bushy growth, bearing a profusion of large, blue flowers. Fine for edgings. 1 foot. Pkt.

Blue Gem. Rich and rare blue colors; flowers large, foliage beautiful. \$0.25

NICOTIANA (Flowering Tobacco)

Pkt.
Affinis. White, very fragrant. ¼ oz. 30c. \$0.10
Affinis hybrida. Beautiful shades, mixed. ¼ oz. 50c. .15

NIGELLA (Love-in-a-mist) Blue

Also called "Devil-in-a-bush." 1 to 1½ feet. Pkt. 10c., ¼ oz. 30c.

BASSI'S GIANT PANSIES

BLACKMORE AND LANGDON'S EXHIBITION
GIANT

English Pansy

Immense blooms of many colors, including Blue, Mahogany, Purple, White, Crimson, in various markings and shadings. Pkt. 25c., ¼ oz. \$1.50.

GIANT VARIETIES—A CHOICE SELECTION IN SEPARATE COLORS

	Pkt.
Adonis. Light blue, white center.....	\$0.15
Apollo. Giant bronze, fringed.....	.15
Apricot. Red apricot color.....	.15
Aurora. Dark claret.....	.15
Blue Domino. Dark blue.....	.15
Fire King. Yellow and brown.....	.15
Golden Queen. Clear golden yellow.....	.15
King of Blacks. Lustrous jet black.....	.15
Snowflake. Pure white.....	.15
Bridesmaid. White shaded rose, beautifully blotched.....	.15
Victoria. Clear ox blood red.....	.15
Canary Bird. Yellow.....	.15
Giant Special Mixed.....	¼ oz. \$1.00 .15

Collection—1 pkt. each of the above
12 named varieties, \$1.50

GIANT WORLD RECORD EARLY FLOWERING PANSY

	Pkt.
Celestial Queen. Bright sky-blue, lavender tint, yellow eye.....	\$0.15
Charm of March. Velvety blue.....	.15
Ice King. White with black eye.....	.15
Winter Sun. Golden yellow, maroon blotch on lower petals.....	.15
Wotan. Black.....	.15
Jove. Deep purple.....	.15
Giant Early Flowering Mixed.....	¼ oz. \$1.00 .15

Collection—1 pkt. each of the above
6 named varieties, 75c.

GIANT MASTERPIECE TYPE, MIXED

A superb class of blotched Pansies, with large, ruffled and curled blooms. The colors are all the richest and finest. Pkt. 25c., ¼ oz. \$1.25.



PETUNIAS, BASSI'S SUPERB SINGLE MIXED



BASSI'S GIANT PANSY

PETUNIAS

	Pkt.
Bassi's Superb Single Fringed Mixed. A mixture of best fringed varieties, including many new colors and shades. 2 ft.....	\$0.25
Bassi's Superb Giant Double Fringed A mixture selected from the largest and finest flowers obtainable. 2 ft.....	.50

SINGLE BEDDING VARIETIES

	Pkt.
Rosy Morn. Soft carmine-pink, white center. Used very extensively for borders, beds or rockeries. 18 in.....	⅛ oz. 50c. \$0.15
Snowball. An excellent, compact variety pro- ducing pure, satiny white flowers throughout the entire season; very dwarf. 12 in. ⅛ oz. 50c.	.15
Purple Queen. Dark maroon red, solid color; height 2½ ft.25
Violet King. True violet blue flowers of a magnificent size, reaching 4 in. across. Height 2½ ft.35
Rose of Heaven. Fiery rose, very effective, useful for bedding purposes.	¼ oz. \$1.00 .15
Bassi's Star. Rosy-crimsoned with a clearly defined five-pointed star of bluish white. Per oz. \$1.00,	.15
Striped and Blotched. A fine bedding type of beautifully striped and blotched flowers.....	¼ oz. 60c. .10
Special Bedding, Mixed. Select bright colors. ¼ oz. 50c.	.10

IMPROVED FRINGED

Pink Triumph. Giant blooms of clear, bright pink delicately fringed. The best fringed all pink Petunia offered. Beautiful in beds and borders and for window boxes. 5 pkts. \$2.00,	.50
Theodosia. In comparison with Pink Triumph it is a softer rose or pink, slightly larger and with a more open throat, beautifully veined.	1.00
Fimbriata coerulea (Steel Blue Fringed). Can be briefly described as a steel blue, heavily veined, with a medium large throat of deeper blue. The outer part of the throat has the appearance of being overlaid with veins of a darker blue.	5 pkts. \$2.00 .50
Coppery Red. A very attractive, new shade of the giant flowering type with ruffled edges.	1.00

POPPIES

Bassi's Selected Annual

GIANT SHIRLEY POPPY, SINGLE

Flowers measure 4 inches across and are fluted and frilled. The branching plants (about 30 inches high) are covered with flowers which bloom in succession for weeks.

	Pkt.
Salmon Pink.....	¼ oz. 35c. \$0.10
Rose Pink.....	¼ oz. 35c. .10
Picotee.....	¼ oz. 35c. .10
Blue Shades.....	¼ oz. 35c. .10
American Legion. Scarlet, large.....	¼ oz. 35c. .10
Single Shirley, Mixed.....	¼ oz. 30c. .10

DOUBLE SHIRLEY MIXED

Flat, thin petals in layers on long stems, in a variety of gorgeous colors. 3 ft. ¼ oz. 30c. .10

GIANT DOUBLE MIXED

Giant blooms of various colors. The petals, some beautifully fringed and others with broad, smooth edges. ¼ oz. 30c. .10

ANNUAL PHLOX

(*Drummondia grandiflora*)

1½ feet.

	Pkt.
Pure White.....	\$0.15
Brilliant Rose.....	.15
Chamois Rose.....	.15
Brilliant Scarlet.....	.15
Isabellina. Yellow.....	.15
Purple.....	.15
Finest Mixed Colors.....	¼ oz. 50c. .15

Collection—1 pkt. each of above 6 varieties, 75c.

PHYSALIS FRANCHETI

(Chinese Lantern Plant)

The long branches are hung with orange yellow pods about as large as a small pepper, like tiny Chinese Lanterns on a string. They hold color and shape for months. 3 ft. Per pkt. 15c.

PORTULACA

	Pkt.
Double Mixed. Saved from the finest double flowers only, and will produce a large percentage of double flowers.....	⅓ oz. 50c. \$0.15
Single Mixed. In the choicest selection of colors.....	½ oz. 50c. .10

PRIMULA (Primrose)

(Seed saved from the finest strains)

GIANT FRINGED CHINESE

	Pkt.
Single Mixed.....	\$0.25
Double Mixed.....	.50
Obconica Gigantea Fringed Mixed (The Everblooming Primrose).....	.35
Sinensis Stellata (Chinese Giant Star Primrose). A distinct type, with giant star-shaped flowers.....	.35
Malacoides (Giant Baby Primrose). Blooms 4 months from the time the seed is sown. 1 ft. Lilac.....	.25
White.....	.25

RHODANTHE (Strawflower)

Height 12 inches. Pkt. 10c.



SALPIGLOSSIS (PAINTED TONGUE)

RICINUS (Castor Oil Plant)

Attains a height of 5 to 10 feet. Pkt.
Sanguineus. Dark red foliage. Height 7 ft. Oz. 30c. \$0.10
Zanzibariensis. Mixed. Huge leaves, green, red, brown, purplish. 10 ft. Oz. 30c. .10

SALPIGLOSSIS (Painted Tongue)

2 feet high; of branching habit, flower freely from July until frost. 2 feet.

	Pkt.
Scarlet.....	\$0.10
Chamois.....	.10
Rose.....	.10
Yellow.....	.10
Light Blue.....	.10
Lilac with Gold.....	.10
Finest Mixed.....	¼ oz. 50c. .10

Collection—1 pkt. each above 6 separate colors, 50c.

SALVIA (Scarlet Sage)

Pkt.
Splendens, Bonfire. The plants are bushy and in late Summer and Fall are literally covered with blooms. 2 ft. ¼ oz. 75c. \$0.15
Splendens. A tall growing variety with immense flower trusses of dazzling scarlet. 3 ft. ¼ oz. 50c. .10
Blue Salvia Patens. Long spikes of flowers, intense bright blue, large size and velvety texture. 2 ft. .25
Dwarf Zurich. Forms bushes 18 in. high, of compact growth, bearing long spikes of scarlet flowers. ¼ oz. \$1.25 .15

SCHIZANTHUS

(Butterfly or Fringe Flower)

Pkt.
Bassi's Giant Flowering Hybrids. Large flowers, white, buff, brilliant rose, rich blue or purple. 2 ft. \$0.25
Wisetonensis. A popular variety for forcing. Colors range from white with yellow center to pink with brown center. .25

SCABIOSA (Mourning Bride, Pincushion Flower, Sweet Scabious)

Seeds should be sown any time in the Spring after danger of frost is past.

IMPROVED DOUBLE LARGE FLOWERING

	Pkt.	
Azure Fairy. Lavender-blue.....	1/4 oz.	50c. \$0.10
Crimson. Dazzling color.....	1/4 oz.	50c. .10
Flesh Color. Light pink.....	1/4 oz.	50c. .10
Sulphur Yellow.....	1/4 oz.	50c. .10
King of the Blacks. Purplish black.....	1/4 oz.	50c. .10
White. Pure white.....	1/4 oz.	50c. .10
Tall Double Flowering Mixed.....	1/4 oz.	40c. .10
Collection—1 pkt. each of above 6 varieties,		50c.

Peach Blossom. The flowers average 3 1/2 inches across and are produced on long stems. The color is a rich Peach Blossom pink 5 pkts. \$1.00 .25

Shasta Scabiosa. A pure white variety, similar to the above and very effective if planted with it..... 5 pkts. \$1.00. .25



IMPROVED DOUBLE LARGE FLOWERING SCABIOSA

SMILAX

Tender perennial climber for the greenhouse, conservatory, or indoor window boxes. Used extensively for decoration. Graceful, light green foliage. Pkt. 10c.

STATICE (Sea-lavender)

	Pkt.	
Bonduella. Bright golden yellow.....		\$0.15
Sinuata. Blue.....		.15
Suworowi. Soft rose.....		.15

STEVIA

Serrata. Excellent plant for bouquets and valuable for cutting. Sprays of minute white flowers..... \$0.15

STOCKS

DRESDEN PERPETUAL (CUT-AND-COME-AGAIN TEN WEEKS STOCKS)



STOCKS, BEAUTY OR GIANT NICE

Will bloom ten weeks after seed is sown when planted in rich, well drained soil. Height 2 feet. Pkt.

Crimson.....	\$0.15
Canary Yellow... .	.15
White.....	.15
Flesh Color.....	.15
Chamois.....	.15
Light Blue.....	.15
Giant Perfection Mixed 1/4 oz.	
\$1.25.....	.15

Collection—1 pkt. each above 6 colors, 75c.

BEAUTY OR GIANT NICE

This variety takes 12 to 15 weeks from the time the seed is sown until it blooms. Height 2 1/2 feet. Pkt.

Almond Blossom. White, shaded carmine..	\$0.20
Canary Yellow.....	.20
Dark Violet.....	.20
Crimson King.....	.20
Mont Blanc. White.....	.20
Beauty of Nice. Delicate flesh pink.....	.20
Queen Alexandra. Rosy lilac.....	.20
Aurora. Golden buff, suffused rose.....	.20
Beauty Mixed.....	1/8 oz. 75c. .20

Collection—1 pkt. each of the above 8 named varieties \$1.40

Princess Alice White (Cut-and-come-again).

A fine stock for cutting, producing continuously from Summer to frost. Height 2 ft. 1/4 oz. \$1.25 \$0.15

SUNFLOWER (Helianthus)

SINGLE VARIETIES

	Pkt.
Miniature Orion Cactus Flowered. Fine twisted petals, very useful for cutting. Sow the seed in the garden where you want them to grow.....	1/4 oz. 50c. \$0.15
New Annual Red. A beautiful shade of reddish brown growing to a height of 5 ft.....	.15
Mammoth Russian. The old-fashioned common Sunflower, with huge flowers..	Lb. 25c. .10

DOUBLE VARIETIES

	Pkt.
Globe of Gold. Dwarf orange. Globe or Dahlia Sunflower, large and double flowers. 6 ft.....	\$0.10
Double Chrysanthemum Flowered. Beautiful Chrysanthemum-like, globular flowers, 6 in. across, finely fringed, on long, slender stems. Color of a beautiful, rich orange. 4 feet tall.....	1/2 oz. 35c. .10

SWEET-WILLIAM (New Annual)

Perennial Sweet-william blooms the second year from seed. This new annual Sweet-william blooms the first year from seed. The colors are white, rose, crimson, etc. Pkt. 15c.

BASSI'S GIANT SPENCER SWEET PEAS

Sweet Peas should be sown as early in Spring as the ground can be prepared. Sow in double rows, with a wire trellis or a row of brush between. Make the drills about 5 inches deep and 9 to 10 inches apart. Sow plentifully, covering about 2 inches deep, and by degrees, as the vines grow, fill the trenches with soil, care being taken not to draw the soil on the top of the growing vines.

EARLY GIANT FLOWERING SPENCER SWEET PEAS

This new strain of early Giant Spencer Sweet Peas will bloom 3 to 4 weeks earlier than the Giant Spencer types. They make lusty plants of vigorous growth and bloom continuously. For planting in the greenhouse, this type is far superior to any other.

- Canary Bird. Cream self.
- Flambeau. Orange cerise.
- Zvolanek's Rose. Giant rose pink.
- Burpee's Orange.
- Snowflake. Pure white.
- Glitters. Cerise.
- Early King. Crimson.
- Blue Jacket. Dark navy blue.
- Yarrowa. Giant rose pink.
- Harmony. Best clear lavender.

Any of the above, pkt. 15c., oz. 65c.

EARLY GIANT SPENCER MIXED

Mixed from the choicest of named varieties. Pkt. 15c., oz. 65c., ¼ lb. \$2.00.

CHOICE COLLECTION OF GIANT SPENCER SWEET PEAS

- Campfire. Bright scarlet.
- Crimson King. Rich deep crimson.
- Mary Pickford. Cream pink, suffused salmon.
- Wizard. Glowing salmon scarlet.
- Angele. Blue mauve, suffused pink.
- Commander Goddall. Violet blue.
- Colne Valley. Lavender blue self.
- Flambeau. Scarlet, overlaid orange.
- Grenadier. Geranium red.
- Elfrida Pearson. Large, shell pink.
- Hebe. Large bright pink.
- King White. Large white.
- Austin Frederick. Improved giant lavender.
- Dobbies Cream. Deep primrose.
- Mrs. Tom Jones. Bright Delphinium blue.
- Edith Taylor. Rose salmon.
- Tangerine Improved. Glowing orange.
- Hercules. Mammoth rosy pink.
- Rosabelle. Large light rose.
- Barbara. Fine salmon pink.

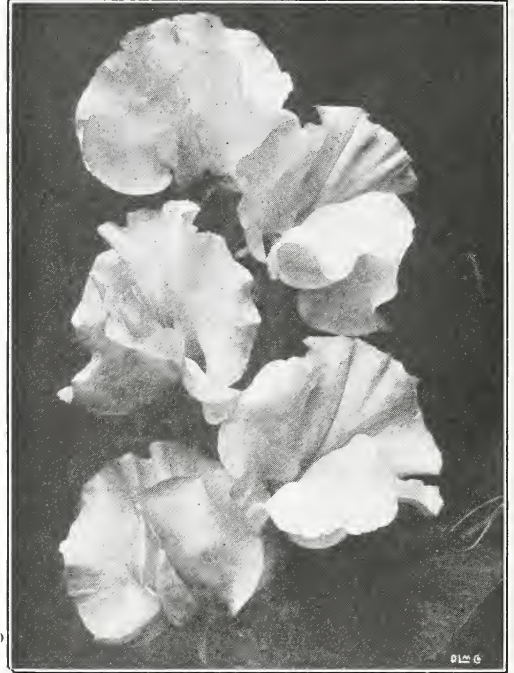
Any of the above, pkt. 10c., oz. 35c., ¼ lb. 90c.

Collection—Pkt. each of the entire 20 var. \$1.50

Collection—Oz. each of the above 20 var. \$5.00

GIANT SPENCER MIXED

An excellent mixture with a choice blend of colors made up from the best in the Giant Spencer type. Pkt. 10c., oz. 30c., ¼ lb. 85c., ½ lb. \$1.50, lb. \$2.75.



GIANT SPENCER SWEET PEAS

VERBENA

- | | |
|---------------------------|----------------|
| | Pkt. |
| Mammoth Scarlet..... | \$0.10 |
| Mammoth Blue..... | .10 |
| Mammoth White..... | .10 |
| Mammoth Pink..... | .10 |
| Mammoth Finest Mixed..... | ¼ oz. 50c. .10 |

Collection—1 pkt. each of above 4 separate varieties, 35c.

- | | |
|--|-------------|
| Aubletia atroviolacea. Reddish lilac. 15 in. . | \$0.25 |
| Venosa (Moss Verbena). Deep lilac. 1 ft. . . | .15 |
| Lemon Scented (Aloysia citrodora). The fragrant, Lemon Scented Verbena | .15 |
| Mammoth Golden Queen. Medium sized flowers, vigorous vine. ¼ oz. 75c. | .25 |
| Hybrida, "Colossea." Rose shades and Rose Auricula-eyed. The individual flowers are over 1 inch in diameter and are borne on large umbels, upright growth. 5 pkts. | \$1.00, .25 |
| "Luminosa." A new color, luminous flame pink, toning to softer shades of salmon, flesh and coral; giant blooms. 5 pkts. | \$1.00, .25 |

VISCARIA

- | | |
|---|--------|
| | Pkt. |
| Cardinalis. A very effective annual of abundant bloom. In flower until frost. Fine for massing and in beds. Also a good cut flower. 1 ft. | \$0.10 |

- TORENIA**
- | | |
|--|--------|
| | Pkt. |
| Fournieri grandiflora. Sow seed inside or in greenhouse February in or March. Blooms from early Summer to frost. | \$0.25 |

DOUBLE WALLFLOWER Pkt.

Early Wonder. Bushy plants with branching habit. 2 to 2½ ft. high, fragrant. \$0.25

XERANTHEMUM

Double Mixed Everlasting, or Immortelle. Pkt. \$0.10

VINCA (Madagascar Periwinkle)

Pink and White Pkt.

Bright Rose. \$0.10
White, with Rose Eye.10
Pure White.10
Mixed.10

BASSI'S GIANT ZINNIAS

**NEW GIANT MAMMOTH ZINNIAS
CALIFORNIA GIANTS**

A magnificent new Giant Zinnia of extraordinary merit and a wonderful improvement in Zinnias. The great advantage of this type is that the very large flowers are imbricated and flat, getting away from the conical type of the Giants and eliminating the stiffness that has been so objectionable.

Pkt.
Enchantress, color same as Exquisite in Dahlia Flowered type. 25c.
Miss Willmott. Soft pink. 25c.
Orange King. Cadmium or burnt orange. 25c.
Orange Queen. Golden yellow. 25c.
Pink Profusion (new). Delicate shrimp-pink, very large. 25c.
Purity. White. 25c.
Rose Queen. Striking bright rose. 25c.
Scarlet Gem. Glowing scarlet. 25c.
Finest Mixed. 20c.
Collection 1 pkt. each of the above 8 varieties,
 \$1.75.

BASSI'S GIANT DAHLIA-FLOWERED ZINNIAS

A popular new variety of enormous size and strong, virile, sturdy growth, the plants reach a height of 3 to 4 feet, with long stems free of foliage, topped by giant flowers, 4 to 5 inches across.

Pkt.
Buttercup. Creamy yellow. Immense size. \$0.25
Crimson Monarch. Largest of all red shades. .25
Dream. Deep lavender turning to purple.25
Exquisite. Light rose with center a deep rose. .25
Old Rose. Real old rose shade.25
Golden State. Rich orange yellow.25
Meteor. Rich glowing, deep red.25
Oriole. Orange and gold bicolor.25
Purple Prince. A fine, deep purple.25

¼ oz. of any named variety \$1.50.

Special Dahlia Flowered Mixed. ¼ oz. \$1.25 .25
Collection—1 each 9 above varieties \$2.00

LILLIPUT IMPROVED ZINNIAS

No type of Zinnia has come into favor so rapidly as this improved strain of Lilliput Zinnias. Plants of even height for bedding purposes, bearing small, button-like, fully double flowers.

Crimson Gem Purple
 (Dark Crimson) **Salmon Rose**
Delicate Flesh Pink **White Gem**
Golden Gem **Finest Mixed**
 Pkt. 25c.; **Collection 1 pkt. each of the above**
6 named varieties, \$1.25.



BASSI'S GIANT DAHLIA-FLOWERED ZINNIAS

BASSI'S GIANT DOUBLE ZINNIA

The giant Double Zinnias are still very popular on account of their bright colors and pastel shades. The flowers are very large, very double and the plants of enormous size.

	Pkt		Pkt.
Shrimp Pink. \$0.15		Scarlet. \$0.15	
Burnt Orange.15		Violet.15	
Deep Flesh Pink.15		Crimson.15	
Deep Salmon Rose. .15		Golden Yellow. . .15	
Apricot.15		White.15	
Rose Pink.15		Mixed. ¼ oz. 50c. .15	

Collection—1 pkt. each, 11 separate varieties above, \$1.40

¼ oz. of any of the above named varieties, 75c.

DWARF LARGE FLOWERING ZINNIAS

The flowers are large and exceptional for cutting. This is really a "cut and come" group for, when cut, they produce a succession throughout the Summer. Height 1½ to 2 feet.

	Pkt.		Pkt
Bright Scarlet. . . . \$0.10		White. \$0.10	
Golden Yellow.10		Finest Mixed.10	
Salmon Rose.10		¼ oz. 35c. .10	

Collection—1 pkt. each, 4 named varieties, 30c.

Magnificent New Types of Zinnias

DAHLIA-FLOWERED ZINNIA

Youth. The flowers are soft rose, well formed, a robust Dahlia-flowered plant. Youth is three or four shades lighter than Exquisite, in the Dahlia-flowered Zinnias. Pkt. 25c., ½ oz. \$1.50.

PUMILA PICOTEE ZINNIA

Delight. The season's novelty in Zinnias. The petals of the flowers are ruffled and curled, giving a light and dainty effect. In addition, each petal is beautifully picoteed. The colors include salmon shades, cream, buff, biscuit, golden yellow, lavender, in fact, a mixture of colors that are most acceptable. Pkt. 25c., 5 pkts. \$1.00.

HARDY PERENNIAL FLOWER SEEDS

Seed of this list if sown now will flower next year and years following

NOTE—ALL VARIETIES MARKED (★) THUS ARE SUITABLE FOR ROCK GARDENS



AGROSTEMMA CORONARIA
ATROSANGUINEA (ROSE
CAMPION)



AQUILEGIA (COLUMBINE)

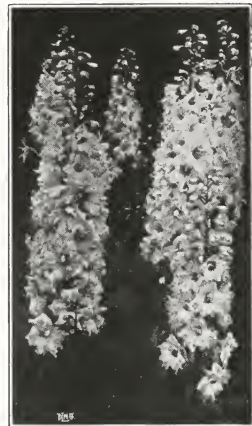


COREOPSIS (HARDY CALLIOPSIS)

	Height.	Time of flowering	Pkt.
★ACHILLEA millefolium rubrum. Pink.....	2 ft.	June-Oct.	\$0.25
ptarmica, "The Pearl." White.....	2½ ft.	June-Sept.	.15
ACONITUM (Monkshood).			
napellus. Dark blue.....	3 ft.	Aug.-Oct.	.15
wilsoni. Pale blue.....	5 ft.	Aug.-Nov.	.25
★AGROSTEMMA coronaria atrosanguinea (Rose Campion).			
Crimson.....	2 ft.	July-Sept.	.10
★ALLWOODI alpinus. Mixed.....	4 in.	June-Sept.	.50
★ALYSSUM saxatile compactum (Hardy Alyssum). Golden yellow.....	9 in.	April-May	.15
ANCHUSA italica, Dropmore. Purple.....	4 ft.	June-Sept.	.15
ANEMONE, St. Brigid. Mixed.....	10 in.	May-June	.25
★AQUILEGIA (Columbine).			
★caerulea. Pale blue and white.....	2 ft.	May-June	.15
★chrysantha. Pale yellow.....	2 ft.	May-June	.25
★Copper Queen. Copper and buff.....	3 ft.	May-June	.35
★Mrs. Scott Elliott's Strain of Long-spurred Hybrids.			
Mixed.....	3 ft.	May-June	.35
★Rose Queen. Long-spurred. Pink.....	3 ft.	May-June	.35
★Bassi's Long-spurred Hybrids. Mixed.....	3 ft.	May-June	.25
Blackmore & Langdon's. Long-spurred. Mixed.....	3 ft.	May-June	.35
vulgaris, "Red Riding Hood." Double rose and white.....	2½ ft.	May-June	.50
★White Queen. Long-spurred. White.....	2½ ft.	May-June	.15
★ARABIS alpina (Rockcress). White.....	5 in.	April-May	.15
★ASTERS, Perennial (Michaelmas Daisy). Mixed.....	3 ft.	Sept.-Oct.	.15
★alpinus (Dwarf). Blue.....	12 in.	July-Sept.	.25
★amellus hybridus. Assortment largest flowering.....	2 ft.	July-Oct.	.35
★AUBRIETIA deltoidea leichtlini. Rosy carmine.....	6 in.	April-May	.15
BELLIS perennis (English Daisy).			
Giant Double White.....	6 in.	April-June	.15
Giant Double Pink.....	6 in.	April-June	.15
Giant Double Red.....	6 in.	April-June	.15
Giant Double Mixed.....	6 in.	April-June	.15
★CAMPANULA carpatica. Deep blue.....	12 in.	June-Aug.	.15
★carpatica alba. White.....	12 in.	June-Aug.	.15
persicifolia grandiflora. Blue.....	2 ft.	June-July	.15
persicifolia alba grandiflora. White.....	2 ft.	June-July	.15
persicifolia moerheimi. Double. White.....	2 ft.	June-July	.25
pyramidalis. Blue.....	4 ft.	Aug.-Sept.	.15
pyramidalis. White.....	4 ft.	Aug.-Sept.	.15
CAMPANULA, Double (Canterbury-bells).			
White.....	3 ft.	June-July	.15
Blue.....	3 ft.	June-July	.15
Rose.....	3 ft.	June-July	.15
Mauve.....	3 ft.	June-July	.15
Mixed.....	3 ft.	June-July	.15
Collection, 1 pkt. each, 4 named varieties, 50c.			
CAMPANULA medium, Single (Canterbury-bells).			
Blue.....	3 ft.	June-July	.10
Carmine Rose.....	3 ft.	June-July	.10
Mauve.....	3 ft.	June-July	.10
White.....	3 ft.	June-July	.10
Mixed.....	3 ft.	June-July	.10
Collection, 1 pkt. each, 4 named varieties, 35c.			
CAMPANULA medium, calycanthema. Resembling a Cup-and-saucer.			
Blue.....	3 ft.	June-July	.15
Mauve.....	3 ft.	June-July	.15
Rose Pink.....	3 ft.	June-July	.15
White.....	3 ft.	June-July	.15
Mixed.....	3 ft.	June-July	.15
Collection, 1 pkt. each, 4 named varieties, 50c.			
★CARNATIONS, Hardy Double Border.			
★Vienna. Finest mixed.....	12 in.	May-July	.20
CENTAUREA (Hardy Cornflower).			
montana rosea. Rose.....	2 ft.	June-Sept.	.15
montana. Blue.....	2 ft.	June-Sept.	.15
★CELASTIUM tomentosum (Snow-in-summer) [Silvery white foliage.....	4 in.	May-July	.15
★CHEIRANTHUS linifolius. Lilac.....	9 in.	May-June	.25
CHRYSANTHEMUMS (The White Paris Daisy).			
Shasta Daisy. White.....	2½ ft.	May-Sept.	.15
King Edward VII. White.....	3 ft.	July-Sept.	.15
CIMICIFUGA racemosa (Snakeroot). White.....	4-5 ft.	June-July	.25
COREOPSIS (Hardy Calliopsis).			
lanceolata grandiflora. Golden yellow.....	2½ ft.	June-Oct.	.10
grandiflora flore-pleno. Yellow.....	2 ft.	June-Oct.	.25
★DIANTHUS (Hardy Pinks).			
★allwoodi. Mixed.....	1½ ft.	June to frost	.50
★deltoides (Maiden Pink). Pink.....	8 in.	June-July	.15
★plumarius. Double mixed.....	1 ft.	June-July	.25
★plumarius. Single mixed.....	1 ft.	June-July	.15

HARDY PERENNIAL SEEDS—Continued

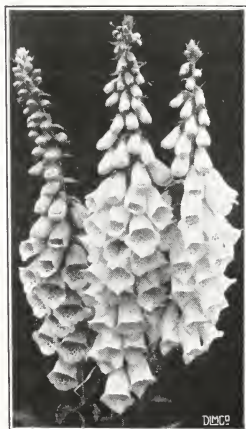
	Height.	Time of Flowering	Pkt
		June-July	\$0.25
DICTAMNUS fraxinella (Gasplant). Mixed.....	3 ft.	June-July	.25
DELPHINIUM (Kelway's Hardy Larkspur)—Collection,			
6 Named Sorts.....	5 ft.	June-July	1.50
belladonna. Pale blue.....	3 ft.	June-Nov.	.25
bellamosa. Dark blue.....	3 ft.	June-Nov.	.25
Blackmore & Langdon's Giant Exhibition Strain.			
Mixed.....	6-7 ft.	June	.50
cardinale. Flaming cardinal red.....	5-6 ft.	June-July	.37
★Chinese Blue Butterfly. Azure blue.....	1½ ft.	June-Nov.	.25
★Chinese Tom Thumb. Ultramarine blue.....	8 in.		.25
formosum. Dark blue, white center.....	3 ft.	June-Sept.	.15
formosum coelestinum. Light blue.....	3 ft.	June-Sept.	.25
Gold Medal Hybrids. Pale blue to deep purple.....	5 ft.	June-Nov.	.25
Hollyhock, Wrexham Hybrids. Giant spikes.....	6-9 ft.	June-July	.75
nudicaule, Lemon Gem. Lemon yellow.....	3 ft.	June-July	.50
Bassi's Double Mixed.....	5 ft.	June-July	.25
DIGITALIS (Foxglove).			
canariensis. Pure yellow.....	4 ft.	June-July	.35
gloxinioides. White.....	4 ft.	June-July	.15
gloxinioides. Purple.....	4 ft.	June-July	.15
gloxinioides. Rose.....	4 ft.	June-July	.15
gloxinioides. Mixed.....	4 ft.	June-July	.15
monstrosa. Mixed.....	3 ft.	June-July	.25
purpurea. Mixed.....	2-3 ft.	June-July	.10
The Shirley. Mixed, giant spikes.....	6 ft.	June-July	.25
ECHINOPS ritro (Globethistle). Steel blue.....	3-4 ft.	July-Aug.	.20
★EDELWEISS. Silvery gray.....	6 in.	July-Sept.	.25
★ERINUS alpinus. Bright blue.....	3 in.	May-June	.25
EUPATORIUM (Perennial Ageratum).			
fraseri. Pure white.....	3 ft.	Aug.-Sept.	.15
purpureum. Pale purple.....	2 ft.	Aug.-Sept.	.35
GAILLARDIA, Kelway's Exhibition.			
grandiflora, Portola Hybrids.....	2 ft.	June-Sept.	.25
grandiflora. Mixed.....	2 ft.	June-Sept.	.15
Bassi's New Hybrids. Mixed.....	2 ft.	June-Sept.	.25
★GEUM			
★Lady Stratheden. Double yellow.....	1½ ft.	May-Sept.	.25
★Mrs. Bradshaw. Orange red.....	1½ ft.	May-Sept.	.15
★Geum, Orange King.....	1½ ft.	June-Sept.	.35
CYPSOPHILA paniculata. White.....			
paniculata flore pleno. Double flowering white.....	2-3 ft.	June-July	.10
paniculata flore pleno. Double flowering white.....	2-3 ft.	June-July	.25
HELIOPSIS, double (Lemoine Strain).....	3-4 ft.	July-Sept.	.35
★HEUCHERA sanguinea splendens. Coral red.....	1½ ft.	May-Sept.	.25
★HIBISCUS (Mallow Marvels). Mixed.....	2-3 ft.	July-Aug.	.25
HOLLYHOCK, Chater's Double.			
Crimson.....	5-7 ft.	July-Oct.	.15
Maroon.....	5-7 ft.	July-Oct.	.15
Peach Blossom.....	5-7 ft.	July-Oct.	.15
Golden Yellow.....	5-7 ft.	July-Oct.	.15
Salmon Rose.....	5-7 ft.	July-Oct.	.15
Rose.....	5-7 ft.	July-Oct.	.15
Scarlet.....	5-7 ft.	July-Oct.	.15
Yellow, Sulphur.....	5-7 ft.	July-Oct.	.15
White.....	5-7 ft.	July-Oct.	.15
Mixed.....	5-7 ft.	July-Oct.	.15
Collection, 1 pkt. each of the above 9 colors of Hollyhocks, \$1.25.			
New Single Hybrids. Mixed.....	5 ft.	July-Sept.	.25
Double Imperator. New. Mixed.....	4-5 ft.	July-Sept.	.50
HONESTY (Lunaria biennis). White.....	2 ft.	May-June	.25
IBERIS (Hardy Candytuft).			
gibraltarica. Delicate lilac.....	1 ft.	May-June	.15
★sempervirens. Pure white.....	10 in.	April-May	.15
★INCARVILLEA delavayi. Rose.....	1-1½ ft.	June	.25
LATHYRUS (Hardy Sweet Pea).			
latifolius. Mixed.....	6 ft.	July-Aug.	.15
LAVANDULA vera (Sweet Lavender). Blue.....	1-1½ ft.	July-Sept.	.25
LIATRIS spicata (Kansas Gayfeather). Rosy purple.....	4-5 ft.	July-Sept.	.30
LINARIA macedonica speciosa. Yellow.....	3 ft.	June-July	.50
★LINUM (Flax).			
Heavenly Blue.....	1½ ft.	May-Aug.	.25
LOBELIA cardinalis. Scarlet.....	2½-3 ft.	July-Sept.	.20
LUPINUS (Hardy Lupines).			
polyphyllus. Deep blue.....	3-4 ft.	July-Sept.	.15
polyphyllus. White.....	3-4 ft.	July-Sept.	.15
polyphyllus roseus. Pink.....	3-4 ft.	July-Sept.	.15
polyphyllus moerheimi. Pink and white.....	4 ft.	July-Sept.	.15
Regal Hybrids. Mixed.....	4 ft.	July-Sept.	.15
★LYCHNIS arkwrighti. Orange scarlet.....	1-2 ft.	June-Aug.	.20
★viscaria splendens. Crimson.....	1 ft.	June-Aug.	.20
LYTHRUM roseum superbum. Rose.....	3-4 ft.	July-Sept.	.15
MALVA moschata (Muskmallow). Rose.....	1-2 ft.	June-Sept.	.15
MATRICARIA capensis. White.....	1-1½ ft.	June-Oct.	.20
MECONOPSIS (Himalayan Poppy).			
Baileyi. Blue and yellow.....	3 ft.	June-July	.50
himalayensis. Bright yellow.....	3 ft.	June-July	.25
wallachi. Blue.....	3 ft.	June-July	.50



DELPHINIUM, Bassi's Double Mixed



HOLLYHOCK, Chater's Double



DIGITALIS, The Shirley

HARDY PERENNIAL SEEDS—Continued

	Height	Time of Flowering	Pkt.
MONARDA didyma (Oswego-tea). Bright red.....	3-3½ ft.	July-Aug.	\$0.15
★ MYOSOTIS (Hardy Forget-me-not). <i>palustris semperflorens</i> . Bright blue.....	10 in.	June-Oct.	.15
★ OENOTHERA youngi (Evening Primrose). Golden yellow.....	2 ft.	July-Sept.	.15
PENTSTEMON, Large-flowering Hybrids . Mixed.....	2-3 ft.	June-July	.15
PHLOX decussata, Finest Mixed . Assorted.....	2-3 ft.	July-Oct.	.15
★ PHYSOSTEGIA (False-dragonhead). <i>virginica alba</i> . White.....	2 ft.	June-Sept.	.15
<i>virginica</i> . Pink.....	2 ft.	June-Sept.	.15
★ PLATYCODON grandiflorum nana . Blue.....	15 in.	June-July	.15
★ grandiflorum album nana . White.....	15 in.	June-July	.15
★ POLYANTHUS, Giant-flowering Mixed	6-9 in.	April-June	.15
POPIES (Perennial). <i>Coonara Pink, "Gundon Hybrids."</i>	1 ft.	June-Sept.	.25
★ <i>Iceland, Yellow</i>	1 ft.	May-Sept.	.10
★ <i>Iceland, White</i>	1 ft.	May-Sept.	.10
★ <i>Iceland, Orange Scarlet</i>	1 ft.	May-Sept.	.10
★ <i>Iceland, Finest Mixed</i>	1 ft.	May-Sept.	.15
<i>Hybrids, Mixed shades</i>	3 ft.	May-June	.15
<i>Oriental, Scarlet</i> . Scarlet with black spots.....	3 ft.	May-June	.15
<i>Oriental, Princess Victoria Louise</i> . Light salmon.....	3 ft.	May-June	.25
<i>Oriental, Queen Alexandra</i> . Salmon.....	3 ft.	May-June	.25
★ POPPY Laciniatum alpinum (Single Fringed Alpine Plant).....	6 in.	May-Sept.	.25
★ POTENTILLA . Assorted colors.....	1½ ft.	June-Sept.	.25
★ PRIMULA (Hardy Primrose). ★ <i>auricula</i> . Mixed.....	10 in.	May-June	.25
★ <i>officinalis hybrida</i> . Blue and yellow.....	10 in.	April-May	.25
★ <i>veris</i> (Cowslip). Yellow.....	10 in.	April-May	.20
★ <i>vulgaris</i> (English Primrose). Lemon-yellow.....	6-9 in.	April-May	.20
PYRETHRUM <i>roseum hybridum</i> . Mixed.....	2 ft.	June-Sept.	.15
<i>roseum hybridum fl. pl.</i> Mixed.....	2 ft.	June-Sept.	.25
<i>New Comet Flowered</i> . Rolled and twisted petals in all colors. Mixed.....	2 ft.	June-Sept.	.35
RUBECKIA (Coneflower). <i>newmanni</i> . Orange yellow.....	2 ft.	July-Oct.	.25
<i>purpurea</i> . Purple.....	3 ft.	July-Sept.	.15
SALVIA (Sage). <i>farinacea</i> . Pale blue.....	4-5 ft.	July-Sept.	.25
★ <i>pratensis</i> . Deep blue.....	2 ft.	June-July	.25
SCABIOSA caucasica . White.....	2-3 ft.	June-Aug.	.25
Blue.....	2-3 ft.	June-Aug.	.25
<i>Columbaria</i> . Giant lavender.....	2 ft.	June-Aug.	.50
★ SEDUM acre . Yellow.....	3 in.	May-July	.25
★ <i>wewersi</i> . Dark rose and lilac.....	4 in.	May-July	.25
SHASTA DAISY . Pure white.....	2½ ft.	May-Sept.	.15
★ STATICE latifolia (Sea-lavender). Delft blue.....	1-2 ft.	June-July	.15
STOKESIA (Hardy Cornflower Aster). <i>cyanea</i> . Blue.....	2 ft.	July-Oct.	.15
SWEET ROCKET . Purple.....	2 ft.	May-June	.15
White.....	2 ft.	May-June	.15
Mixed.....	2 ft.	May-June	.10
SWEET-WILLIAM (<i>Dianthus barbatus</i>). <i>ingrescens</i> . Velvety black.....	1½ ft.	May-July	.10
Dark Crimson.....	1½ ft.	May-July	.10
<i>Holborn Glory</i> . Mixed.....	1½ ft.	May-July	.10
Giant White.....	1½ ft.	May-July	.10
Newport Pink.....	1½ ft.	May-July	.10
Pink Beauty. Salmon pink.....	1½ ft.	May-July	.10
Copper Queen. (New).....	1½ ft.	May-July	.25
Scarlet Beauty. Intense scarlet.....	1½ ft.	May-July	.10
Single Finest Mixed.....	1½ ft.	May-July	.10
THALICTRUM diptercarpum . Rosy purple.....	4 ft.	Aug.-Sept.	.15
VALERIANA (Garden Heliotrope). Crimson.....	3 ft.	June-July	.15
White.....	3 ft.	June-July	.15
Red.....	3 ft.	June-July	.15
★ VERONICA . (Speedwell) ★ <i>repens</i> . Trailing. White.....	4 in.	May-June	.25
★ <i>amethystina</i> . Blue, pale.....	2½ ft.	Aug.-Oct.	.25
★ <i>veronica spicata</i> . Blue.....	1½ ft.	June-July	.15
★ <i>subsessilis longifolia</i>	2 ft.	May-June	.20
★ VIOLA cornuta (Tufted Pansies). ★ <i>Spring Messenger</i> . Purple, blue.....	10 in.	April-Nov.	.15
★ <i>Ardwell Gem</i> . Primrose.....	10 in.	April-Nov.	.15
★ <i>Black Prince</i> . Very dark.....	10 in.	April-Nov.	.15
★ <i>David Simpson</i> . Lavender and crimson.....	10 in.	April-Nov.	.15
★ <i>Jersey Gem</i> (Novelty). Deep blue.....	10 in.	May to frost	.25
★ <i>Nora Marrow</i> . Bluish bluish.....	10 in.	May to frost	.15
★ <i>Primrose Dame</i> . Sulphur yellow.....	10 in.	May to frost	.15
★ <i>White Perfection</i> . White.....	10 in.	April-Nov.	.15
★ <i>Mixed</i>	10 in.	April-Nov.	.15

Collection, 1 pkt. each of above 8 varieties, \$1.15

VIOLA odorata (Sweet-scented Violet). Violet.....	6 in.	April-May	.15
★ WALLFLOWER, Hardy Siberian . Orange.....	15 in.	May-July	.15



VERONICA SPICATA



PYRETHRUM



STATICE



BASSI'S VEGETABLE SEEDS

ASPARAGUS ROOTS

New Washington. The most rust resistant and productive for home gardens. It is early and immune from disease. Extra heavy crowns, 3 yr. old. roots \$4.50 per 100, \$40.00 per 1000.

Palmetto. Very prolific yielder. \$3.50 per 100, \$30.00 per 1000.

BEANS

GREEN-PODDED BUSH BEANS

Bountiful. Stringless. Commence bearing six weeks after sowing. The pods are large and somewhat flattened. $\frac{1}{2}$ lb. 30c., lb. 50c., 2 lbs. 95c., 8 lbs. \$3.50.

Mammoth Stringless Green Pod. The finest green Bean for the home garden, quick growing, prolific, brittle and entirely stringless. $\frac{1}{2}$ lb. 25c., lb. 40c., 2 lbs. 75c., 8 lbs. \$2.75.

Red Valentine. One of the earliest Beans. Known for its Red Blossoms. $\frac{1}{4}$ lb. 25c., 1 lb. 45c., 2 lbs. 85c.

Black Valentine. May be planted earlier than other varieties of Beans. Pkt. 10c., $\frac{1}{2}$ lb. 25c., 1 lb. 45c., 2 lbs., 85c., 8 lbs. \$3.00.

Refugee, or 1000-to-1. One of the latest Beans. The pods are nearly round, light green, 5 in. long. $\frac{1}{2}$ lb. 25c., lb. 40c., 2 lbs. 75c., 8 lbs. \$2.80.

French Horticultural. Very prolific and a heavy yielding, flat podded Bean, tender and of fine flavor. $\frac{1}{2}$ lb. 25c., lb. 45c., 2 lbs. 85c., 8 lbs. \$3.25.

English Broad Windsor. Large, heavy pods containing three to four large beans; plant early. $\frac{1}{2}$ lb. 30c., lb. 50c., 2 lbs. 90c.

FORCING VARIETY

Masterpiece. A quick grower and very prolific, the pods attaining a length of over 7 in., straight, tender, meaty and stringless. Bean thick and flat. $\frac{1}{2}$ lb. 40c., lb. 75c., 2 lbs. \$1.45.

WAX-PODDED BUSH BEANS

Sure Crop Stringless Wax. Bears heavy crops of slightly curved, deep yellow pods. Remains in bearing for a remarkably long period. Very hardy and rust resistant. $\frac{1}{2}$ lb. 25c., lb. 40c., 2 lbs. 75c., 8 lbs. \$2.75.

Improved Golden Wax. Golden yellow pods which are stringless and tender at all stages. $\frac{1}{2}$ lb. 25c., lb. 40c., 2 lbs. 75c., 8 lbs. \$2.75.

BUSH LIMA BEANS

Burpee's Bush Lima. An excellent variety producing four to five Beans in a pod. $\frac{1}{2}$ lb. 25c., lb. 45c., 2 lbs. 80c., 8 lbs. \$3.00.

Fordhook Bush Lima. Very prolific in bearing, with large pods of a luscious flavor. $\frac{1}{2}$ lb. 30c., lb. 50c., 2 lbs. 90c., 8 lbs. \$3.25.

Henderson Bush Lima. An early, productive Bean of small size, bearing within 60 days. $\frac{1}{2}$ lb. 25c., lb. 40c., 2 lbs. 75c., 8 lbs. \$2.75.

POLE or RUNNING BEANS

One pound will plant 200 hills, with about eight seeds to a pole

Old Homestead (Green Kentucky Wonder). The pods are fully 6 in. long, and when grown, are stringless, tender, delicious and productive from July until frost. $\frac{1}{2}$ lb. 25c., lb. 40c., 2 lbs. 75c., 8 lbs. \$2.75.

Scarlet Runner. A fine, fleshy green podded Bean highly prized for its scarlet flowers. Pkt. 15c., $\frac{1}{2}$ lb. 25c., lb. 45c., 2 lbs. 85c.

POLE LIMA BEANS

Extra Early Leviathan Lima Bean. Prolific and fine flavored. $\frac{1}{2}$ lb. 25c., lb. 40c., 2 lbs. 75c., 8 lbs. \$2.75.

Carpenteria, or Green Seeded. Plump, strong pods, seldom contain less than five beans. $\frac{1}{2}$ lb. 25c., lb. 45c., 2 lbs. 90c., 8 lbs. \$3.25.

BEET

One packet will sow 25 feet of row, one ounce, 75 feet
Extra Early Egyptian. Deep blood red, 1½ in. in diameter. Pkt. 10c., oz. 20c., ¼ lb. 60c., lb. \$1.75.

Early Wonder. Well formed and deliciously sweet. Pkt. 10c., oz. 20c., ¼ lb. 90c., lb. \$2.00.

Detroit Dark Red. A deep colored Beet of medium size, perfectly shaped. The best for late sowing. Pkt. 10c., oz. 20c., ¼ lb. 60c., lb. \$2.00.

Bassi's Special Early Turnip-Shape Blood Beet. Ready to use in six weeks; flesh a deep red, very tender and exceedingly sweet. Pkt. 15c., oz. 25c., ¼ lb. 75c., lb. \$2.50.

SWISS CHARD

One ounce will sow about 75 feet of drill

Giant Lucullus. Plants grow to a height of 2 to 2½ ft. The stalks are quite thick, 1½ in. broad, heavily ribbed and from 10 to 12 in. long below the leaf. Pkt. 10c., oz. 20c., ¼ lb. 60c.

Smooth Leaf, Dark Green. A distinctive, large growing variety with heavy white stalks, of fine flavor. Pkt. 10c., oz. 20c., ¼ lb. 60c.

ITALIAN BROCCOLI

GREEN SUMMER SPROUTING

Broccoli is a crop similar to Cauliflower, but much hardier. With the flavor both of Asparagus and Cauliflower, it makes a most delicious dish.

Christmas Calabrese. Early green sprouting Pkt. 25c., ¼ oz. \$1.25.

Propagano. Green sprouting. Pkt. 25c., ¼ oz. \$1.25.

Sparachetti. Dwarf compact, green sprouting. Pkt. 25c., ¼ oz. \$1.25.

Cauliflower, Early Bronzino. With purplish green heads. Pkt. 25c., ¼ oz. \$1.25.

BRUSSELS SPROUTS

One packet will produce 50 plants

Bassi's Exhibition. An excellent variety, producing vigorous plants, well clothed with large, firm sprouts. Pkt. 15c., ½ oz. 40c., oz. 75c.

CABBAGE

Early Jersey Wakefield. The earliest of all Cabbages, produces a head of conical form, sweet and well flavored. Pkt. 10c., ½ oz. 30c., oz. 50c.

Golden Acre. The earliest round headed Cabbage in cultivation. It is new and shapes up to small solid heads with small outer leaves. Pkt. 20c., ½ oz. 60c., oz. \$1.00.

Late Flat Dutch. Heads are tremendous, round and flattened on top, very solid, with few outside leaves. Pkt. 10c., ½ oz. 30c., oz. 50c.

Danish Ballhead, Short Stem. The finest all-round late Cabbage, producing enormous, solid heads, purest white when cut open. Pkt. 10c., ½ oz. 30c., oz. 55c.

RED VARIETY

Mammoth Rock Red. Largest and surest heading Red Cabbage, large, round, very solid, with numerous spreading leaves. Pkt. 15c., ½ oz. 35c., oz. 65c.

SAVOY CABBAGE

Perfection Drumhead. A large head of beautifully crimped foliage. Pkt. 10c., ½ oz. 35c., oz. 65c.

CHINESE, or CELERY CABBAGE (Pe-Tsai)

Compact heads resembling Cos Lettuce, with a Celery-like flavor. It may be cooked or used as salad. Pkt. 10c., ½ oz. 25c., oz. 45c.

CARROT

Earliest French Forcing. Deep orange red roots, almost round, with very small tops. Pkt. 10c., ½ oz. 25c., oz. 45c., ¼ lb. \$1.50.

Improved Danvers. Smooth skin, grows about 6 in. long, about 1½ in. through at top and ends in a blunt point. The color is a deep orange. Pkt. 10c., oz. 25c., ¼ lb. 75c., lb. \$2.25.

Selected Chantenay. Averages 5½ to 6 in. in length, broad at the neck, narrowing gradually to a blunt end. Flesh rich orange red with small tops. Pkt. 10c., oz. 25c., ¼ lb. 75c., lb. \$2.25.

Improved Long Orange. Good keeper, long tapering roots. Pkt. 10c., oz. 25c., ¼ lb. 75c., lb. \$2.25.

Coreless. A uniform, half long cylindrical carrot, blunt pointed and small tap root, about 1¼ inches in diameter from top to bottom. Pkt. 10c., oz. 30c., ¼ lb. 90c.

CAULIFLOWER

Earliest Dwarf Erfurt. The best and earliest for forcing under glass. Pkt. 35c., ¼ oz. \$1.50, ½ oz. \$2.75, oz. \$5.00.

Early Snowball. This sure heading variety is of dwarf habit, with outer leaves small and very uniform. Fine for growing under glass. Pkt. 25c., ¼ oz. \$1.50, ½ oz. \$2.50, oz. \$4.50.

Dry Weather, or Danish Giant. An ideal Cauliflower for dry locations. Large, pure white heads; exceptional quality and early heading. Pkt. 25c., ¼ oz. \$1.50, ½ oz. \$2.50, oz. \$4.50.

CELERY

One ounce will produce 3,000 plants

Easy Blanching. The earliest of all. The stalks are crisp and massive, hearted to a light golden yellow. Pkt. 15c., ½ oz. 40c., oz. 75c.

Paris Golden Self Blanching. One of the earliest and most popular varieties in cultivation. Short, stocky plants, with heavy, golden yellow stalks; good flavor and easy to blanch. Pkt. 15c., ½ oz. 60c., oz. \$1.00.

Bassi's White Plume. A fine early variety, requiring very little blanching. Pkt. 10c., ½ oz. 35c., oz. 60c.

Bassi's Golden Plume. It grows quite massive and matures exceptionally early. Easy to blanch. This variety is resistant to rust and blight and seems to thrive in any soil. Pkt. 25c., ¼ oz. \$1.50, ½ oz. \$2.75, oz. \$5.00.

WINTER VARIETIES

Winter Queen. Popular on account of its massive heart and crispness and exceptional keeping qualities. Pkt. 10c. ½ oz. 30c., oz. 50c.

CELERIAC. Turnip-rooted Celery

Sow in drills 1 foot apart early in May, covering lightly and evenly; tender growth. Should be cut when 1½ to 2 inches high.

One packet will sow 25 feet

Large Smooth Prague. Of excellent flavor, roots smooth and of large size. Pkt. 10c., ½ oz. 25c., oz. 40c.

CHERVIL

One ounce will sow 150 feet of drill

Curled. Cultivated like Parsley and used for garnishing and flavoring soups and salads. Pkt. 10c., oz. 35c.

CHICORY

Witloof, or French Endive. A very delicious salad. Pkt. 10c., ½ oz. 30c., oz. 50c.

CHIVES

Used for seasoning and flavoring. Plants resemble a mass of small Onions planted very closely. Pkt. 25c., clumps 50c., doz. \$5.00.

CRESS. Pepper Grass

One ounce will sow 100 feet of drill

Extra Curled. Pkt. 10c., oz. 25c.

TRUE ERFURT WATERCRESS

Likes a moist situation, such as brooks, where the roots and stems are submerged. Pkt. 25c., ½ oz. 60c., oz. \$1.00.

SUGAR CORN

One pound will plant 100 feet of drill or 100 to 150 hills

Alpha. The earliest corn grown, at least 10 days earlier than Golden Bantam, produces stalks about 4 feet tall, sweet and tasty. ½ lb. 35c., lb. 60c., 2 lbs. \$1.00.

Bantam Evergreen. A blend of Golden Bantam and Stowell's Evergreen, it has the advantage of maturing later. Grows to a height of 6 to 7 ft., bearing on each stalk two ears of a medium size. Pkt. 10c., ½ lb. 25c., lb. 40c., 2 lbs. 75c., 8 lbs. \$2.75.

Black Mexican. Very sweet and of fine flavor. Grain black. Pkt. 10c., ½ lb. 25c., lb. 45c., 2 lbs. 80c.

Country Gentleman. Pkt. 10c., ½ lb. 20c., lb. 40c., 2 lbs. 75c., 8 lbs. \$2.75.

Golden Bantam. Plants attain a height of only 3 to 4 ft., usually bearing two or more ears to the stalk. One of the hardiest varieties of Corn grown. Pkt. 10c., ½ lb. 25c., lb. 40c., 2 lbs., 80c., 8 lbs. \$2.75.

Metropolitan. The largest and best of the early sweet corn, producing 10 to 12 rowed ears of corn, about 10 inches long ½ lb. 25c., lb. 40c., 2 lb. 75c.

Stowell's Evergreen. The ears are large, grains deep, exceptionally tender and sugary, Pkt. 10c., ½ lb. 25c., lb. 40c., 2 lbs., 75c., 8 lbs. \$2.50.

White Cob Cory. For a quick growing sort, the ears are large and well filled with medium sized grains. Pkt. 10c., ½ lb. 25c., lb. 40c., 2 lbs. 75c., 8 lbs. \$2.75.

CORN SALAD

The leaves are used for garnishing and for salad in Fall, Winter or Spring. Sow seed in late Summer and it matures in about 65 days. Frost makes the leaves tender. A most palatable salad. Pkt. 10c., oz. 30c., ¼ lb. 75c.

CUCUMBER

Davis Perfect. Color dark, glossy green; shape, slim, symmetrical and very uniform; average length 10 to 12 in. Early to mature and prolific; the best slicing Cucumber. Pkt. 10c., oz. 25c.

Improved Early White Spine. Nearly cylindrical in form, slightly pointed at the ends, perfectly smooth and of deep, rich coloring marked with distinct white lines at the blossom end. Pkt. 10c., oz. 25c.

Extra Long Green. A well-known standard variety of excellent quality about 1 ft. in length. Vines vigorous and productive. Pkt. 10c., oz. 20c.

Japanese Climbing. Fine for pickling, slicing and salads. Fruit is a foot or more in length, with a smooth, dark green skin which turns brown and is netted when ripe. Pkt. 15c., oz. 30c.

Fordhook Pickling. One of the best pickling varieties. Vines vigorous and prolific, remaining in strong, healthy, growing condition longer than any other variety. Pkt. 10c., oz. 25c.

FORCING CUCUMBERS

Imported Seed

English Frame or forcing cucumbers for greenhouse and frame culture.

Lockies Perfection. A fine standard variety. Pkt. 30c.

Everyday (Sutton). The plants set freely at all seasons. Pkt. 50c.

Telegraph Improved. Fine, smooth fruits, 14 to 16 inches long. Pkts. 30c.

Tender and True. Dark colored fruits, exceptionally long. Pkt. 30c.

EGGPLANT

One ounce will produce about 1000 plants

New York Improved Spineless. Fruit large, round, deep purple black; stems and calyx entirely free of spines. Pkt. 15c., ½ oz. 40c., oz. 75c.

Long Purple. The fruits are 6 to 8 inches in length and 2 to 3 inches in diameter; handsome dark purple. Early and prolific. Pkt. 15c., ½ oz. 40c., oz. 75c.

Black Beauty. Similar to "New York," but darker, broader, thicker and has a higher polish. Pkt. 15c., ½ oz. 40c., oz. 75c.

ENDIVE

One ounce will sow 100 feet of drill

Green Curled. Close heads of finely curled leaves; flavor excellent. Makes an excellent salad and is very easily grown. Pkt. 10c., oz. 30c.

White Curled. Leaves finely curled or mossed; attractive, light green color. Blanches easily. Pkt. 10c., oz. 30c.

Broad-leaved Batavian. The best variety, with smooth, broad leaves, which must be blanched. Pkt. 10c., oz. 30c.

FENNEL—FINOCCHIO

One packet will sow a row of 25 feet

Improved Sicilian. Plants resemble the Leek, and only the lower swollen stem bases are used. Sow in May in rows 1½ ft. apart and thin to 1 ft. in the row. Do not hill, but cultivate and feed freely. Pkt. 15c., oz. 35c.

KALE

Dwarf Green Scotch Kale. A curled variety, with spreading foliage; hardy and of fine flavor. Pkt. 10c., oz. 30c., ¼ lb. \$1.00.

KOHLRABI

One ounce will sow about 200 feet of drill

White Vienna. The earliest and best for market or family use, with large bulbs and small, green leaves. Pkt. 10c., ½ oz. 25c., oz. 50c.

Early Purple Vienna. Similar to above excepting color. Pkt. 10c., ½ oz. 25c., oz. 50c.

LETTUCE

"IDEAL" FORCING LETTUCE

A small all-heart, solid head lettuce, maturing in about thirty-five days. Pkt. 15c., ½ oz. 30c., oz. 50c.

BEST HEAD LETTUCE

Big Boston. A splendid head Lettuce. Can be forced in frames. Large, creamy white heads; center crisp and delicious. Pkt. 10c., ½ oz. 20c., oz. 35c. ¼ lb. \$1.00.

Boston Market. A fine early variety, suitable for forcing in greenhouse and coldframes. Heads compact and solid. Pkt. 10c., oz. 30c., ¼ lb. \$1.00.

New York, or Wonderful. Also known as the "Los Angeles." This is the real Cabbage head Lettuce of enormous size and blanches beautifully. Pkt. 15c., ½ oz. 25c., oz. 40c., ¼ lb. \$1.25.

May King. Early, outdoor sort. Does remarkably well in cold or wet weather, forming solid heads of bright green; the heart is clear yellow. Pkt. 10c., oz. 30c., ¼ lb. \$1.00.

Salamander. A very distinct type all head, few outer leaves; heat resisting. Pkt. 10c., oz. 35c., ¼ lb. \$1.00.

UNRIVALED, or IMPROVED BIG BOSTON.

Yellowish green leaves without any brown tinge; withstands Midsummer heat. Pkt. 15c., oz. 35c., ¼ lb. \$1.00.

LOOSE LEAVED VARIETIES

Early Curled Simpson. A curly leaved sort. Pkt. 10c., oz. 25c., ¼ lb. 75c.

COS, or ROMAINE LETTUCE

Paris White Cos or Romaine. A splendid sort for Summer use; leaves quite erect. Pkt. 10c., oz. 30c. ¼ lb. \$1.00.

LEEK

One ounce will sow about 100 feet of drill

Large American Flag. A large growing type, desirable in every way; the most widely used variety. Pkt. 10c., oz. 30c., ¼ lb. \$1.00.

Musselburg. (Winter). Hardy, extra large size. Leaves are fan-shaped, dark green color. Pkt. 10c., oz. 30c., ¼ lb. \$1.00.

LEEK—Continued

Prizetaker. This variety is of giant size, medium height but with an exceptionally heavy, thick, pure white stalk. Pkt. 15c., ½ oz. 25c., oz. 45c.

International Prize. A prize-winning variety. Pure white, with long heavy stems of immense size. Pkt. 15c., ½ oz. 25c., oz. 45c.

MUSKMELON

Bassi's Hoodoo. An extra early variety of delicious flavor. The flesh is green. A very prolific yielder. Pkt. 15c., oz. 40c.

Rocky Ford. Fruit is densely covered with delicate lace-like netting. Flesh green, with a suggestion of pink at the seed cavity. Pkt. 10c., oz. 30c., ¼ lb. \$1.00.

Early Hackensack. A large, green fleshed variety, round, slightly flattened from the stem to the blossom end, very deeply and broadly ribbed, with bold, strongly defined netting. Pkt. 10c., oz. 25., ¼ lb. 75c.

Emerald Gem. Small, smooth skinned, deep green fruits, very prolific and long bearing. Extra early and sweet; flesh orange. Pkt. 10c., oz. 30c., ¼ lb. \$1.00.

Honey Dew. A melon of huge size with pale green flesh which is almost solid in the fruit. Measures 8 to 9 in. long and about two-thirds as thick. Pkt. 15c., ½ oz. 25c., oz. 45c., ¼ lb. \$1.25.

ENGLISH FORCING MUSKMELONS

For Culture Under Glass Imported Seed

Best of All. A fine, green fleshed variety of excellent flavor. Pkt. 50c.

Windsor Castle. A favorite variety of exceptional merit, green fleshed. Pkt. 50c.

King George. A distinct scarlet meshed melon, skin buff yellow, evenly netted, with fruits weighing 5 to 8 lbs.; excellent flavor. Pkt. 50c.

Blenheim Orange. A delicious variety of excellent flavor. Beautifully netted. Pkt. 50c.

WATERMELON

Cole's Early. Measures 12 in. long by 9¾ in. in diameter. The flesh is bright red. Pkt. 10c., oz. 25c., ¼ lb. 60c.

Citron. Round and handsome, used for preserves. Pkt. 10c., oz. 20c., ¼ lb. 50c.

Hungarian Honey. An extra early Watermelon, and one sure to ripen in our vicinity. Pkt. 10c., oz. 25c., ¼ lb. 75c.

MUSTARD

One ounce will sow a row of 50 feet

White London. An unusually good sort, useful for salads and garnishing. Pkt. 10c., oz. 25c., ¼ lb. 75c.

OKRA, or GUMBO

One ounce will sow about 100 feet of drill

White Velvet. Pods perfectly round, smooth, of a white, velvety appearance and superior in flavor. Pkt. 10c., oz. 20c., ¼ lb. 50c.

Long Green. Long ribbed pods, very prolific. Pkt. 10c., oz. 20c., ¼ lb. 50c.

ONION

One ounce of seed to 100 feet of drill

SOUTHPORT GLOBE ONION

- Southport Yellow Globe.** Pkt. 10c., ½ oz. 35c., oz. 65c., ¼ lb. \$2.25.
- Southport White Globe.** Pkt. 15c., ½ oz. 40c., oz. 75c., ¼ lb. \$2.50.
- Southport Red Globe.** Pkt. 10c., oz. 40c., ¼ lb. \$1.35.
- Selected Ailsa Craig.** Pkt. 25c., ½ oz. 75c., oz. \$1.40.
- Prizetaker.** Pkt. 15c., ½ oz. 35c., oz. 65c.
- White Portugal, or American Silverskin.** Pkt. 10c., oz. 50c.

ONION SETS

For early Onions for home cooking and for Scallions. If sets are planted as soon as ground is open, can be ready for pulling in June.

	Qt.	4 qts.
White Onion Sets.....	\$0.50	\$1.85
Yellow Onion Sets.....	.40	1.50
Red Onion Sets40	1.50

PARSNIPS

One packet will sow a row of 25 feet

- Long Smooth Hollow Crown.** Pkt. 10c., oz. 25c., ¼ lb. 75c.

PARSLEY

One ounce of seed to 150 feet of drill

- Bassi's Moss Curled.** Fine habit, mossy and beautiful. Excellent for garnishing and flavoring. Pkt. 15c., oz. 25c.
- Hamburg, or Turnip Rooted.** The fleshy roots, which are the edible part, resemble small Parsnips and are esteemed for flavoring. Pkt. 10c., oz. 20c.
- Plain Italian.** With non-curled leaves and exceptionally hardy. Used extensively for flavoring soups, etc. Pkt. 10c., oz. 20c.

GARDEN PEAS

Northern Grown

Those marked with an asterisk (*) are wrinkled Marrows and are the sweetest and best flavored Peas.

SMOOTH VARIETIES

- Earliest of All, or Alaska.** A valuable early round blue Pea, of excellent flavor. Height 2 ft. ½ lb. 25c., lb. 40c., 2 lbs. 75c., 8 lbs. \$2.75.
- Bassi's First Early.** Heavy crop of large pods, well filled with richly flavored Peas. Height 3 feet. ½ lb. 25c., lb. 45c., 2 lbs. 80c., 8 lbs. \$3.00.

WRINKLED SORTS

- ***Sutton's Excelsior.** One of the most productive of the early midseason sorts. Height 18 in. ½ lb. 25c., lb. 40c., 2 lbs. 80c., 8 lbs. \$2.75.
- ***Nott's Excelsior.** Preferred by many planters on account of its prolific yielding qualities. 14 in. ½ lb. 25c., lb. 45c., 2 lbs. 80c., 8 lbs. \$3.00.

GARDEN PEAS—Continued

- ***Gradus, or Prosperity.** An extra early, large podded Marrow Pea, and are well filled with large Peas of delicious flavor. 2½ ft. ½ lb. 25c., lb. 45c., 2 lbs. 90c., 8 lbs. \$3.25.
- ***Laxtonian.** The finest dwarf early Pea offered. Enormous pods well filled with immense peas. Comparing favorably in size both of pods and peas, with taller and later sorts. ½ lb. 30c., lb. 45c., 2 lbs. 85c., 8 lbs. \$3.10.
- ***Juno.** A fine, heat resisting, main crop variety with strong, healthy productive vines. ½ lb. 25c., lb. 40c., 2 lbs. 75c., 8 lbs. \$2.75.
- ***Telephone.** This variety is the best for late use, bearing heavy crops of large pods filled with peas of the finest quality. 5 ft. ½ lb. 25c., lb. 45c., 2 lbs. 80c., 8 lbs. \$3.00.

EDIBLE PODDED SUGAR PEAS

Used in the same manner as Wax Beans.

- Luscious Melting Sugar.** Large, broad pods which are so brittle that they snap without any string. 5 ft. ½ lb. 25c., lb. 45c., 2 lbs. 80c., 8 lbs. \$3.00.

PEPPER

One ounce will produce about 1000 plants

- Chinese Giant.** The standard large, sweet Pepper; ripens quite early. Fruit 4 or 5 in. broad, of equal length and quite uniform. Color green, changing to a glossy scarlet when ripe. Pkt. 15c., ½ oz. 40c., oz. 75c.
- Early Giant.** Fruit almost round, 5 inches long, about 3½ inches thick on compact, low growing bushes. Pkt. 20c., ½ oz. 75c., oz. \$1.25.
- Large Bell, or Bull Nose.** A large, early variety, mild; ripens to bright red. Pkt. 15c., ½ oz. 40c., oz. 75c.
- Long Red Cayenne.** Fruits about 4 in. long and 1 in. thick, bright red; very prolific; hot. Pkt. 15c., ½ oz. 40c., oz. 75c.
- Perfection Pimiento.** A large, thick shelled Pepper, Pkt. 20c., ½ oz. 40c., oz. 75c.
- Ruby King.** Exceptionally sweet, with exceedingly thick, flesh. Pkt. 15c., ½ oz. 40c., oz. 75c.

PUMPKIN

One ounce for 30 hills

- Mammoth.** Saved from specimens, weighing over 100 lbs. Pkt. 10c., oz. 25c., ¼ lb. 75c.
- Sugar, or Sweet.** Fine grained, sweet and prolific. Pkt. 10c., oz. 30c., ¼ lb. \$1.00.
- Cheese.** Flat. One of the best for family use. Pkt. 10c., oz. 25c., ¼ lb. 75c.
- Winter Luxury.** Round, with smooth yellow skin, finely netted; flesh thick and of excellent flavor. Pkt. 10c., oz. 25c., ¼ lb. 75c.

POTATOES

(Certified Maine Potatoes)

Four barrels are sufficient to plant 1 acre in drills

- Irish Cobbler.** A fine, extra early sort, producing plump, excellent quality tubers of good size.
 - Early Rose.** Skin red, tubers uniform.
 - Green Mountain.** Unsurpassed for main crop. The tubers are white, of flat, oval shape, smooth, and of excellent quality.
- Prices subject to change according to market conditions. Prices upon request.

RADISH

- Early Scarlet Turnip, White Tipped.** Matures in 25 days. Handsome, flat roots, $\frac{3}{4}$ in. in diameter by $\frac{1}{2}$ in. long. Pkt. 10c., oz. 20c., $\frac{1}{4}$ lb. 60c.
- Bassi's Earliest Scarlet Globe.** Pkt. 10c., oz. 25c., $\frac{1}{4}$ lb. 75c.
- Red Rocket.** Flesh bright and crisp. Olive-shaped. Pkt. 10c., oz. 20c., $\frac{1}{4}$ lb. 60c.
- White Rocket.** Olive-shaped, white. Pkt. 10c., oz. 25c., $\frac{1}{4}$ lb. 75c.
- French Breakfast.** Olive-shaped, white tipped, mild and crisp. Pkt. 10c., oz. 20c., $\frac{1}{4}$ lb. 60c.
- BEST LONG SORTS**
- White Icicle.** Within 30 days from sowing seeds the roots attain a length of 4 to 5 in. by $\frac{3}{4}$ in. in diameter at the thickest part. Pkt. 10c., oz. 25c., $\frac{1}{4}$ lb. 75c.
- WINTER RADISHES**
- Long Black Spanish.** The popular Winter sort. Pkt. 10c., oz. 20c., $\frac{1}{4}$ lb. 60c.

RHUBARB

- Victoria.** Strong clumps. Each 30c., doz. \$3.00.

SALSIFY. Oyster Plant

- Mammoth Sandwich Island.** Produces large, smooth roots. A fine vegetable of an oyster-like flavor. Pkt. 10c., oz. 40c., $\frac{1}{4}$ lb. \$1.25.
- Scorzoner (Black Oyster Plant).** Black skin. Flesh is white. Pkt. 10c., oz. 40c.

SORRELL

- Sow early in Spring in drills 6 to 8 inches apart. *One ounce will sow about 100 feet of drill.* Pkt. 10c., oz. 30c., $\frac{1}{4}$ lb. \$1.00.

SPINACH

- Norfolk Savoy-leaved.** A popular variety for late Fall cutting. Quick growing, produces large, fleshy, dark green leaves. Pkt. 10c., oz. 15c., $\frac{1}{4}$ lb. 30c., lb. \$1.00.
- Victoria.** August and September sowings will supply the table during the coming Winter and early Spring. Pkt. 10c., oz. 15c., $\frac{1}{4}$ lb. 35c., lb. \$1.00.
- King Denmark.** Heat resisting, compact, thick, fleshy, dark green leaves. Pkt. 10c., oz. 15c., $\frac{1}{4}$ lb. 35c., lb. \$1.00.
- New Zealand.** The best for Summer when it is hot and dry. Pkt. 10c., oz. 25c., $\frac{1}{4}$ lb. 75c., lb. \$2.00.

SQUASH

- Improved Hubbard.** An old favorite and very popular Squash for Winter keeping. A dark bluish green color. Pkt. 10c., oz. 30c., $\frac{1}{4}$ lb. 75c.
- Giant Summer Crookneck (Bush Squash).** Plants compact, fruits deep golden and heavily warted. Pkt. 10c., oz. 30c., $\frac{1}{4}$ lb. 75c.
- Vegetable Marrow.** About 9 in. long, of cylindrical form and fine flavor. Cream colored, flesh white. Pkt. 10c., oz. 30c., $\frac{1}{4}$ lb. 95c.
- Scalloped White Bush.** (Patty Pan). The plants are of the true bush habit. Pkt. 10c., oz. 25c., $\frac{1}{4}$ lb. 75c.
- Cocozelle or Italian Vegetable Marrow.** Long green fruit of delicious taste when cooked. Pkt. 10c., oz. 30c., $\frac{1}{4}$ lb. \$1.00.
- Zucchini (Italian Cucumber Bush Squash).** Delicious, cylindrical fruit of pale green color. Pkt. 15c., oz. 35c., $\frac{1}{4}$ lb. \$1.00.

TOMATO

One ounce will produce about 1000 plants

EARLY VARIETIES

- Earliana.** The earliest red Tomato. Fruit is of uniform size, averaging 3 in. in diameter and from 2 to $2\frac{3}{4}$ in. in depth; Pkt. 10c., $\frac{1}{2}$ oz. 25c., oz. 45c.
- John Baer.** An early bright red Tomato. Later than Earliana, surpasses it in size and quality. Pkt. 15c., $\frac{1}{2}$ oz. 30c., oz. 55c.

MIDSEASON VARIETIES

- Ponderosa.** Few Tomatoes are as large and while slightly ribbed, it is very solid and luscious. Pkt. 10c., $\frac{1}{2}$ oz. 30c., oz. 50c.
- Dwarf Stone.** The fruits are produced in clusters of three to five and the growth is close jointed. Average 4 in. in diameter and $2\frac{1}{2}$ in. in depth. Pkt. 10c., $\frac{1}{2}$ oz. 25c., oz. 45c.

LATER VARIETIES

- Selected Stone.** One of the best main crop Tomatoes. It is smooth, with very little core. Pkt. 10c., $\frac{1}{2}$ oz. 25c., oz. 45c.
- Crimson Cushion.** More symmetrical in shape than Ponderosa, and much thicker through from stem to blossom end. The flesh is firm and "meaty." Pkt. 15c., $\frac{1}{2}$ oz. 30c., oz. 55c.

THE BEST YELLOW TOMATO

- Golden Ponderosa.** Smooth, of excellent quality, enormous size and ripens early. Pkt. 15c., $\frac{1}{2}$ oz. 40c., oz. 75c.

ENGLISH FORCING TOMATOES

(Imported Seed)

- Best of All.** One of the best forcing varieties, fruits of good size. Pkt. 25c.
- Sutton's A. I.** A vigorous growing plant with enormous trusses of scarlet fruit. Pkt. 25c.
- Winter Beauty.** Smooth, deep red fruits of large size. Pkt. 25c.
- Comet.** A fine forcing variety with small, red fruit. Pkt. 25c.

SMALL FRUITING TOMATOES

- | | |
|----------------------|------------------------|
| Yellow Cherry | Red Pear-Shaped |
| Red Cherry | Yellow Pear |
| Red Currant | Yellow Plum |
| Peach | Red Plum |
- Above 8 varieties, pkt. 15c., $\frac{1}{2}$ oz. 25c.

TABLE TURNIP

One ounce will sow 150 feet of drill, 2 pounds will sow an acre in drills, 3 pounds will sow an acre broadcast

- Early Purple Top White Globe.** Quick growing. Produces in eight weeks from sowing, a good crop of tender roots, mild and pleasing in flavor. Pkt. 10c., oz. 20c., $\frac{1}{4}$ lb. 45c., lb. \$1.50.
- Snowball.** A pure white variety of medium size, maturing early. Pkt. 10c., oz. 20c., $\frac{1}{4}$ lb. 65c., lb. \$2.00.
- Golden Ball or "Orange Jelly."** Bulb medium size, almost round, very smooth, the flesh deep yellow throughout. Pkt. 10c., oz. 20c., $\frac{1}{4}$ lb. 60c., lb. \$1.75.
- Purple Top Milan.** An early, flat white Turnip with purple top. Pkt. 10c., oz. 25c., $\frac{1}{4}$ lb. 80c., lb. \$2.25.

RUTABAGA

(Russian or Swedish Turnip)

Sow 4 pounds to the acre in June, in drills 2 feet apart
American Purple Top. The roots grow to a large size with short neck and small top. Pkt. 10c., oz. 25c., ¼ lb. 50c., lb. \$1.50.

HERBS

Varieties marked A are Annual; P, Perennial.

- ANISE.** A. Aromatic. For garnishing and flavoring. \$0.10
- BASIL, SWEET.** A. Used for flavoring. 10
- BORAGE.** A. Valuable for bees and for flavoring. 10

HERBS—Continued

- CARAWAY.** A. Seeds used in confectionery. \$0.10
- CORIANDER.** A. For garnishing. The seeds are used for flavoring. 10
- DILL.** A. Used for flavoring pickles. 10
- FENNEL, SWEET.** P. Used for flavoring fish sauces. 10
- LAVENDER.** P. Valuable for its perfume. . . 15
- MARJORAM, SWEET.** P. Leaves and shoots used for seasoning. 10
- ROSEMARY.** P. Valuable as a hand wash. . 15
- SAGE.** P. Leaves are used in dressings and sauces. 10
- SUMMER SAVORY.** A. Used for seasoning. . 10
- THYME.** P. Used for seasoning. 10

AGRICULTURAL AND FIELD SEEDS

CLOVER SEEDS

- ALFALFA, NORTHERN GROWN.** Sow 40 lbs. per acre. Lb. 40c., 10 lbs. \$3.85, 100 lbs. \$35.00.
- ALFALFA, GRIMM'S.** Will yield 10 to 15 per cent more hay per acre. Lb. 75c., 10 lbs. \$6.85, 100 lbs. \$65.00.
- ALSIKE or HYBRID CLOVER.** Sow 8 lbs. per acre. Lb. 60c., 10 lbs. \$5.50, 100 lbs. \$50.00.
- MEDIUM RED CLOVER.** Sow 14 lbs. per acre. Lb. 70c., 10 lbs. \$6.50, 100 lbs. \$60.00.
- CRIMSON, or SCARLET CLOVER.** Lb. 50c., 10 lbs. \$4.50, 100 lbs. \$40.00.
- WHITE CLOVER.** Lb. 75c., 10 lbs. \$7.00, 100 lbs. \$65.00.

BUCKWHEAT

48 pounds to the bushel. Sow 1 bushel to the acre.
Japanese. Earliest and most productive of the Buckwheats. Peck \$1.25, bus. \$4.00.

FIELD CORN

- 8 quarts will plant 1 acre in hills, 3 bushels will sow 1 acre broadcast
- Longfellow.** A large eared Flint variety. Ears 8-rowed, often 14 to 15 in. long, with small cob and deep kernels. Peck \$1.25, bus. \$4.50.
- Improved Leaming.** Large, handsome ears, deep grained and a deep orange color. An early maturing Dent variety. Peck \$1.25, bus. \$4.50.
- Evergreen Fodder Corn.** For fodder and ensilage. Fine for feeding green. Peck \$1.75, bus. \$5.50.

MILLET

Sow 1 bushel to acre; 48 lbs. to bushel

- Golden.** Very large crop, though not so early as Hungarian. Grows 3 to 5 ft. high. Requires good soil. Bus. \$4.25, 100 lbs. \$8.00.
- Hungarian.** A Summer forage crop. Sow in June; can be cut in about 60 days. Yields two to three tons of hay per acre. Bus. \$4.00, 100 lbs. \$7.50.

MANGEL WURZEL

Mammoth Long Red. The largest and heaviest cropper of all the Mangels. Lb. 75c., 5 lbs. \$2.50.

OATS

Sow 2 to 3 bushels to the acre, 32 lbs. to the bushel

Storm King. Of immense size, thick, plump and heavy. Very early, has great length of straw. A great producer. Bus. \$2.75, 10 bus. or over \$2.50 per bus.

RAPE

Dwarf Essex. Fine for sheep pasture, valuable as a soil enricher. Plant in June or July in drills at the rate of 3 lbs. per acre, broadcast 5 lbs. per acre. Lb. 25c., 100 lbs. \$15.00.

RYE

For grain. 1 bushel to the acre; for forage or soiling, 1½ bushels, 56 lbs. to the bushel

- Spring.** Peck \$1.25, bus. \$4.00.
- Giant Winter.** Peck \$1.00, bus. \$3.50.
- New Rosen.** An improved Winter variety. Peck \$1.25, bus. \$4.00.

VETCHES

- Spring Vetches.** Use 40 to 60 lbs. to the acre. Sow in Spring while ground is cool and moist, or in early Autumn. Lb. 20c., 100 lbs. \$12.00.
- Winter Vetches.** Also called Sand Vetch or Hairy Vetch. Recommended for Fall sowing with Rye. Use 30 to 50 lbs. per acre. Lb. 40c., 100 lbs. \$28.00.

WHEAT

Sow 1½ bushels to the acre

Marquis Spring. Very early beardless Wheat, producing larger yields than any other kind. Sow as early as possible, about 2½ bushels per acre. Bus. \$4.50.

GREENHOUSE DEPARTMENT

BEDDING PLANTS

Annual bedding plants from our own greenhouses. All strong pot grown and sure to bloom. In pots large enough for the proper development of root growth to insure large plants and flowers.

Special prices on larger quantities.

	Pots	Each	Doz.	100
AGERATUM, Blue Perfection . For bedding or edging.....	3	in.	\$0.20	\$2.00 \$15.00
ALYSSUM, White (Carpet of Snow). For edging.....	2½	in.	.15	1.50 11.00
Lilac Queen . For edging.....	2½	in.	.15	1.50 11.00
ASTERS, Invincibles and Giants of California . In the following colors: Pink, rose, lavender, crimson, purple, white . Not pot grown.....				.50 3.50
BEGONIAS, Pink or Red . For bedding or window boxes.....	3	in.	.20	2.00 16.00
CALENDULA, Orange King . For bedding.....	3	in.	.15	1.50 11.00
CANNAS, The President . Giant blooms of dark red with green foliage, edged red.....	4	in.	.35	3.50 28.00
King Humbert . Large yellow blooms with snowy edge.....	4	in.	.35	3.50 28.00
King Humbert Scarlet . Bronze foliage.....	4	in.	.35	3.50 28.00
CARNATION, Chabaud's Annual Mixed . For bedding.....	2½	in.	.15	1.50 11.00
CELOSIA <i>cristata</i> (Crested Cockscomb). For bedding.....	2½	in.	.15	1.50 11.00
<i>plumosa</i> (Feathered Cockscomb). For bedding.....	2½	in.	.15	1.50 11.00
CENTAUREA <i>cyanus</i> , Blue (Blue Cornflower). For bedding.....	2½	in.	.15	1.50 11.00
<i>imperialis</i> (Giant Sweet Sultan). For bedding.....	2½	in.	.15	1.50 11.00
COLEUS, Fancy Leaf . In variety. For edging or window boxes.....	2½	in.	.15	1.50 11.00
COSMOS, Giant Mixed Colors	2½	in.	.15	1.50 11.00
DIDISCUS (Blue Lace Flower).....	2½	in.	.15	1.50 11.00
DRACAENA <i>indivisa</i> . For flower boxes or specimen plant.....			\$1.00-\$3.00	
FUCHSIAS, Choice Varieties Single and Double	4	in.	.35	3.50 28.00
GERANIUMS, S. A. Nutt. Dark red.....	4	in.	.35	3.50 28.00
Beaute Pottvine . Salmon pink.....	4	in.	.35	3.50 28.00
Ricard . Scarlet.....	4	in.	.35	3.50 28.00
GERANIUMS, Rose	4	in.	.40	4.00 30.00
HELIOTROPE, Blue . Select variety.....	4	in.	.35	3.50 28.00
IVY, German . For window boxes.....	3½	in.	.25	2.50 20.00
English . For window boxes.....	4	in.	.50	5.00 40.00
ICEPLANT, Carmine . Beautiful bedding plants.....	3½	in.	.20	2.00 15.00
LANTANA, Chinese . Choice varieties.....	3	in.	.25	2.50 20.00
LARKSPUR, Annual . Branching varieties for bedding.....	2½	in.	.15	1.50 11.00
LOBELIA, Dwarf, Crystal Palace . Dark blue. For edging.....	2	in.	.15	1.50 11.00
Emperor William . Light blue. For edging.....	2	in.	.15	1.50 11.00
MARIGOLD, French Dwarf, Little Brownie	2½	in.	.15	1.50 11.00
Tall African Orange . For massing.....	2½	in.	.15	1.50 11.00
MIGNONETTE, Giant	2½	in.	.15	1.50 11.00
PETUNIA, Rosy Morn . Pink. For bedding.....	3½	in.	.20	2.00 15.00
Violet Queen . Pure violet blue. For bedding.....	3½	in.	.20	2.00 15.00
Giant Fringed . Single mixed colors. For bedding.....	3½	in.	.20	2.00 15.00
Balcony Blue . For window boxes.....	3½	in.	.20	2.00 15.00
PHLOX <i>drummondii</i> . Annual. In mixture for bedding.....	2½	in.	.15	1.50 11.00
SALVIA, Tall and Dwarf Scarlet . For beds.....	3½	in.	.20	2.00 15.00
SALPIGLOSSIS, Mixed	2½	in.	.15	1.50 11.00
SCABIOSA (Mourning Bride). In mixture.....	2½	in.	.15	1.50 11.00
SNAPDRAGON, Bassi's Giant . In variety or separate colors.....	2½	in.	.15	1.50 11.00
STOCKS, Ten Weeks Dresden (Cut-and-come-again). For bedding.....	2½	in.	.15	1.50 11.00
VERBENA, Mammoth . In mixture. For bedding or borders.....	2½	in.	.15	1.50 11.00
Lemon Scented	3	in.	.35	3.50 28.00
VINCA, Variegated . For window boxes.....	3	in.	.35	3.50 28.00
ZINNIA, Giant Flowered . In colors. For bedding.....	2½	in.	.15	1.50 11.00
Dahlia Flowered . In colors. For bedding.....	2½	in.	.15	1.50 11.00

GREENHOUSE, CONSERVATORY AND HOUSE PLANTS

Grown at our own greenhouses. Inspection invited.

We are organized and prepared to give prompt service in this department, all plants are ready in their proper seasons.

ARDISIA crenulata. Ornamental greenhouse plant with dark green glossy foliage, bearing clusters of red berries which last for the longest time. 5-6 in. pots. *Prices on application.*

ASPARAGUS plumosus nanus. The best for table decoration, delicate lacelike foliage.
2½ in. pots.\$1.75 per doz., \$15.00 per 100
3 in. pots. 4.00 per doz., 30.00 per 100

sprengeri. Excellent for hanging baskets or window boxes.

2½ in. pots.\$1.75 per doz., \$15.00 per 100
3 in. pots. 4.00 per doz., 30.00 per 100

ASPIDISTRA. One of the easiest plants to grow. Thrives anywhere indoors.

lurida. The green-leaved variety.

5 in. pots, 10-12 leaves.....\$3.50 each

6 in. pots, 12-15 leaves..... 4.50 each

7 in. pots, 15-20 leaves..... 6.00 each

variegata. Dark green leaves, striped white.

5-in. pots, 10-12 leaves.....\$4.50 each

6-in. pots, 12-15 leaves..... 6.00 each

AUCUBA japonica. Evergreen shrub with large laurel-like leaves, spotted with bright yellow. Useful out of doors in Summer. Very decorative.

Young plants, 3½ in. pots, \$6.00 per doz. \$40.00 per 100.

Heavy bushy plants, 15-18 in. high. \$5.00 each

AZALEA indica. Beautiful flowering greenhouse shrubs. Shipments during October and November.

Mrs. Fred Sanders. Double salmon-pink.

Vervaeneana. Rose-salmon, edged white.

Empress of India. Carmine rose with a suffusion of white. Double.

Jean Haerens. Double bright pink.

Any of the above:

9-10 in. diameter.....\$1.75 each
12-15 in. diameter.....\$3.50 each

KURUME (*Japanese Azalea*)

Apple Blossom. White, shaded pink.

Christmas Cheer. Real Christmas red.

Coral Bells. Coral Pink.

Mauve Beauty. Charming mauve shade.

Orange Beauty. Rich clear orange.

Pink Pearl. Lovely salmon pink.

Salmon Beauty. Rosy-salmon.

9-10 in. diameter.....\$2.00 each
12-14 in. diameter..... 3.50 each

BEGONIAS. Grown from leaf cuttings. Beautiful flowering plants for the greenhouse. Large light-green leaves covered with a mass of dainty exquisite blooms.

Melior. Pink.

Gloire de Lorraine. Pink.

Gloire de Cincinnati. Soft pink.

Mrs. J. A. Peterson. Deep pink with reddish-brown foliage.

2¼-in. pots....\$7.50 per doz., \$50.00 per 100

Begonia rex. Very ornamental variety with huge heart-shaped leaves of olive-green color, beautifully marked and striped. In 4, 5, 6 inch pots. *Prices on application.*

BOUGAINVILLEA, Crimson. Bright crimson flowers.

3-in. pots.....\$6.00 per doz., \$50.00 per 100

Sanderiana. A splendid free flowering Easter plant.

3-in. pots.....\$5.00 per doz., \$35.00 per 100

BOUVARDIA. White and pink. Wonderful varieties for cutting.

2¼-in. pots.....\$3.00 per doz., \$20.00 per 100

BUDDLEIA, Farquhari. Popular pale pink.

2¼-in. pots.....\$2.50 per doz., \$19.00 per 100

Asiatica. Lovely pure white.

2¼-in. pots.....\$3.00 per doz., \$24.00 per 100

3 -in. pots.....\$4.00 per doz., \$30.00 per 100

CAMELLIA japonica. Strong bushy plants from 18-24 inches high. Double pink and double red. Either color.....\$5.00 each

CARNATIONS. We can supply these in different stages of development in season. Our stock consists of all the best and proven varieties.

Arctic. Magnificent new white. Large blooms, long stems; prolific.

Belle Washburn. A fine red.

Benora. Creamy-white, red marks.

Betty Lou. A strong grower and free bloomer; good solid pink.

Cheerful. Fine dark pink, continuous bloomer.

CARNATIONS—Continued

Enchantress Supreme. Salmon pink.

Laddie. Very large blooms on long, strong stems; charming shade of rosy salmon pink.

Maine Sunshine. Finest clear yellow.

Matchless. Very fine white.

Pink Delight. Pure salmon-pink.

Pink Matchless. Clear silver pink.

Spectrum. Attractive large scarlet.

White Delight. A sport from "Pink Delight." Very Good white.

Rooted cuttings.....\$12.00 per 100

2¼-in. pots..... 18.00 per 100

Field grown plants..... 25.00 per 100

CHRISTMAS CHERRIES. All sturdy and vigorous stock.

Cleveland, yellow and red.

2¼-in. pots....\$2.00 per doz., \$15.00 per 100

Field grown plants.5-6-7 in. pots, \$1.00-\$3.00

CHRYSANTHEMUMS. We carry the best Standard and Pompon varieties.

Rooted cuttings {

2¼-in pots.....}.....at regular prices

CINERARIA. Giant flowering, large leaved. Giant blooms in a splendid variety of colors. Ready from August to November.

grandiflora. Semi-dwarf mixed.

2¼-in. pots....\$3.00 per doz., \$20.00 per 100

multiflora nana (Potsdam strain).

2¼-in. pots.....\$3.00 per doz., \$20.00 per 100

CYCLAMEN. We specialize in cyclamen. Our stock consists of vigorous healthy plants in a variety of large beautiful blooms. Ready from June onward. Mixed colors.

2½-in. pots.....\$3.50 per doz., \$25.00 per 100

3 -in. pots..... 6.00 per doz., 45.00 per 100

4 to 5 in. pots.....Prices on application

CYPERUS (*Umbrella Plant*). Ornamental plant for the greenhouse or for indoor or outside pools.

alternifolius.

2¼-in. pots.....30c. each, \$3.00 per doz.

4 -in. pots.....60c. each, \$6.00 per doz.

DAISY (*Marguerites*). Strong plants.

Boston Yellow. Yellow Daisy.

2¼-in. pots.....20c. each, \$2.00 per doz.

Giant White. Pure white.

2¼-in pots.....20c. each, 2.00 per doz.

DECORATIVE DRACAENAS

fragrans. Broad, dark green foliage, exceptionally hardy.

massangeana. Broad, dark green foliage, with broad, golden band through the center.

Mrs. Eugene Andre. Bronzy foliage, developing to an intense brilliant rosy-crimson.

terminalis. Tall growing variety with pale green leaves.

sanderiana. Green foliage, with broad edge creamy white.

Prices upon application

ERLANGEA tomentosa (*Blue Winter flowering Ageratum*). Fine for cutting and arranging in vases of mixed flowers.

2¼-in. pots, 15c. each, \$1.50 doz., \$12.00 per 100

FERNS

- Boston.** Long graceful fronds.
Dwarf Boston. More compact than above.
Roosevelt.
Scotti.
Teddy, Jr.
Whitmani. Long fronds of fine curled leaves.
Whitmani compacta.
Verona.
 2¼-in. pots. .15c. each, \$1.50 doz., \$12.00 per 100
 All above varieties also in
 5, 6, 7, 8, 10 inch pots. \$1.00 to \$12.00 each
- ADIANTUM wrighti** (*Maiden Hair Fern*). Dainty ornamental variety.
farleyense, cuneatum, and hybridum.
 All sizes.50c. to \$10.00 each
- TABLE FERNS.** **Pteris, Oak Leaf, Holly Leaf, etc.** All varieties.
 2¼-in. pots.15c. each, \$1.50 per doz.
- CIBOTIUM schiedeii.** Ornamental plant with long, graceful branches. Good specimens, in 10-in. tubs. \$10.00 to \$15.00 each
- POLYPODIUM mandaianum.**
 2, 4, 5 in. pots.75c. to \$2.50 each
- FICUS** (*Rubber Plant*). } All sizes. Prices
Elastica, pandurata. } upon application.
- FUCHSIA.** Ornamental varieties for outside or the greenhouse. All varieties:
 2¼-in. pots.15c. each, \$1.50 doz.
 4, 5, 6 in. pots.35c. to \$3.00 each
Tree or Standard form \$5.00 each
- GARDENIA** (*Cape-jasmine*) **veitchi.** White, sweet-scented. 2¼-in. pots for shipment in June. \$4.00 per doz., \$30.00 per 100; 3-in. pots, for shipment in September, \$10.00 doz., \$75.00 per 100.
- GERBERA jamesoni hybrids.** Ready for shipment in June. Should be planted in bench, June-July. Will flower October and on throughout the Winter. Strong, 2 year old divisions, \$15.00 doz., \$100.00 per 100.
- HELIOTROPE.** The old-fashioned favorite in improved form, with enormous flower heads; fragrant.
 Dark blue. 2¼-in. pots, 15c. each, \$1.50 doz.
 4, 5, 6 in. pots.35c. to \$3.00 each
Tree or Standard form \$5.00 each
- HYDRANGEAS.** A choice selection in the newest and best colors.
French and German varieties, 2¼-in. pots, 25c. each, \$2.50 doz. Plants ready for forcing, 5-6-7-8-10 in. pots, \$15.00 to \$40.00 per doz.
- HYDRANGAEA otaksa** (*The Blue Hydrangea*).
 Young plants, 3-in. pots. \$3.50 doz.
 Good plants, 5-in. pots. 8.00 doz.
 Strong plants, 7-in. pots.25.00 doz.

DECORATIVE PALMS

- KENTIA forsteriana.** Broad, heavy foliage.
belmoreana. The hardest variety.
- PHOENIX roebelini.** A very popular variety.
 Combines the graceful appearance of the Cocos and the hardness of the Kentia.
canariensis. } All sizes. Prices on application.
australis. }
- LANTANA.** Tree or standard form.
 30 to 36 in. \$5.00 each
- PANDANUS.** One of the finest decorative plants; graceful green foliage, striped creamy white.
veitchi. 4, 5, 6, 7, 8 in. pots. \$2.00 to \$10.00 each
- PEPEROMIA maculosa.** Useful decorative plant with variegated foliage. Fine for making up in mixed window boxes.
 3 to 5 in. pots.50c. to \$2.00 each
- POINSETTIA.** Strong, vigorous plants developing giant blooms.
Hollywood. The best variety.
Oakleaf.
Christmas Red.
 2¼-in. pots, 25c. each, \$2.50 doz., \$20.00 per 100
- PRIMULAS** (*Primroses*).
obconica. The best for all around use. Various colors in giant blooms.
chinensis (*Chinese*). Choice free flowering strain.
American Legion.
Radio.
malacoides alba (*Baby Primrose*). A cloud of blooms covering plant.
 2¼-in. pots. \$2.50 doz., \$20.00 per 100
- STEVIA serrata.** Medium height, double white.
 2¼-in. pots. \$1.50 doz., \$11.00 per 100
- SANSEVIERIA laurenti** (*Sword Plant*). Long, heavy, upright dark green leaves edged ¼ to ½ in. with a band of creamy yellow.
 4, 5, 6, 7, 8, 10 in. pots. . . \$1.00 to \$15.00 each

VEGETABLE PLANTS AND ROOTS

ASPARAGUS. See page 27.	Doz.	100
CABBAGE PLANTS, (Early)	\$0.35	\$2.50
Late35	2.50
Red Mammoth35	2.50
CAULIFLOWER PLANTS, Snowball	.35	2.50
CHIVES. Clump.	Each 50c.	5.00
CELERY PLANTS, Golden Plume.		
(Early)40	3.00
White Plume. Early40	3.00
Winter Queen (Late)40	3.00
EGGPLANTS50	3.50
HORSERADISH. Sets (Giant)25	2.00
LETTUCE, May King25	2.00
Big Boston25	2.00
Romaine25	2.00
PEPPER, Bull Nose50	3.50
PARSLEY PLANTS, Double Curled.	.30	2.00
RHUBARB ROOTS, Victoria. Large.		
Each 30c.	3.00	25.00
TOMATO PLANTS, Earliana40	3.00
Stone40	3.00
Ponderosa40	3.00
Golden Ponderosa40	3.00
Earliana40	3.00

Summer Flowering Bulbs and Roots

Easy to grow and very showy in beds and borders.

AMARYLLIS, GIANT AMERICAN HYBRIDS

The finest strain of Amaryllis yet developed. Flowers of largest size, with broad, well rounded, overlapping petals of perfect form. Produce flowers ranging from pure white grounds with varied markings to the richest self colors, such as scarlet, crimson, cherry, etc. Each \$1.00, doz. \$10.00.

ANEMONES, GIANT FRENCH POPPY

Fascinating, Poppy-like flowers in beautiful color combinations. Blues to cream and apricot, and most wonderful cut flower. Doz. \$1.25, 100 \$8.00.



AMARYLLIS

BEGONIAS, TUBEROUS ROOTED

Giant Single Flowering. Excellent for shady spots and under trees. Colors—Crimson, pink, scarlet, white and yellow, salmon and mixed. Each 35c., doz. \$3.50.

Giant Double Flowering. Yellow, crimson, white, scarlet, pink and salmon. Each 45c., doz. \$4.50.

CALLA

Elliottiana (Yellow). The finest under cultivation. Considered the most beautiful of all the Callas. The foliage is green spotted with white, while the flowers bloom a deep golden yellow. The plants grow to a height of about 2 ft. Plant when danger of frost is over. Each 45c., doz. \$4.50.

CINNAMON VINE (Dioscorea batatas)

A beautiful, rapid growing Summer climber, with bright green, glossy foliage, and spikes of deliciously cinnamon scented, white flowers. It is perfectly hardy, the stem dying down in Winter but growing with great rapidity in the Spring so as to cover any trellis or arbor early in the season. Splendid for shading verandas. Each 20c., doz. \$2.00.

CANNAS

Bassi's Large Flowering French DORMANT ROOTS

Alsace. Pale sulphur changing to cream white, green foliage. 4 ft. Each 15c., doz. \$1.50.

American Beauty. Oriental carmine or cerise, green foliage. 5 ft. Each 20c., doz. \$2.00.

Brandywine. A healthy, vigorous grower. 4 to 5 ft. Large flowers of intense vinous red, dappled with deep crimson. Dark bronze foliage. Each 20c., doz. \$2.00.

Orange Bedder. Bright orange with just enough scarlet suffusion to intensify the dazzling mass of color. 4 ft. Each 15c., doz. \$1.50.

Panama. Attractive rich orange red with a well defined edge of bright golden yellow. Early and free flowering. 3 ft. Each 15c., doz. \$1.50.

Wintzer's Colossal. The largest flowered Canna to date, with strikingly vivid scarlet flowers. 5 ft. Each 15c., doz. \$1.50.

King Humbert. The most popular of all Cannas. Great vermilion flowers contrast with deep bronze foliage. 5 ft. Each 20c., doz. \$2.00.

Yellow King Humbert. A "sport" of the bronze leaved red flowering King Humbert. Flowers are yellow dotted orange scarlet. The occasional reversion of a stalk, foliage or flowers to the typical King Humbert makes a bed of this variety most unusual. 4½ ft. Each 20c., doz. \$2.00.

Pot-grown plants, ready after May 1st

RANUNCULUS, DOUBLE GIANT FRENCH

Large, double buttercup flowers on long stems in beautiful shades of orange, yellow, bronze and brown. Desirable as a cut flower and as garden plants. Doz. \$1.25, 100 \$8.00.

TUBEROSE, DOUBLE DWARF PEARL

Delightfully fragrant and beautiful Summer flowering bulbs, of dwarf, stocky growth, the flower spikes growing to a height of 2 feet, almost completely filled with blooms. Doz. \$1.25, 100 \$8.00.

MADEIRA VINE

(Climbing Mignonette)

The old favorite still retains its popularity because of its rapid growth and freedom from insects. Heavy glossy leaves with long hanging stems of fragrant white flowers. Invaluable for arbors and porches, etc. Each 15c., doz. \$1.50.

HYACINTHUS CANDICANS

(Summer Hyacinth)

Luxuriant, free growing, Summer flowering plants, spreads 2 to 3 feet, throwing up great, tall spikes, 4 to 5 feet in height, each bearing twenty to thirty large, white, bell-shaped flowers. Large bulbs. Each 15c., doz. \$1.50.



MASS PLANTING OF GLADIOLUS

GLADIOLUS NEW AND CHOICE VARIETIES

- AMERICAN BEAUTY.** American Beauty color cream throat, immense blooms. Each 15c., doz. \$1.75, 100 \$10.00.
- ANNIE LAURIE.** White, suffused, fresh rosy pink, semi-ruffled. Each 25c., doz. \$2.75, 100 \$20.00.
- BENGAL TIGER.** Red tiger, striped, very attractive and odd. Each 15c., doz. \$1.50, 100 \$11.00.
- CARMEN SYLVA.** One of the best whites, massive stalk. Each 10c., doz. \$1.00, 100 \$8.00.
- FERN KYLE.** A beautiful variety, soft creamy-white with amaranth markings on throat. Upright spike of wide open flowers. Each 20c., doz. \$2.00, 100 \$15.00.
- HENRY FORD.** One of the clearest of dark Fuchsia purples. A self-color and most effective under artificial light where it glows with intense color. Each 20c., doz. \$2.00, 100 \$15.00.
- KIRCHOFF'S VIOLET.** Dark bluish violet, giant flowers; the best blue. Each 50c., doz. \$5.00.
- KRINKLES.** Intensely ruffled, light tyrian rose-pink. Each 20c., doz. \$2.00, 100 \$15.00.
- JOHN T. PIRIE.** An attractive and beautiful variety, large flowers of mahogany brown, with cream throat; an odd combination. Each 20c., doz. \$2.25, 100 \$16.00.
- MING TOY.** Beautiful buff and yellow; superb. Each 10c., doz. \$1.00, 100 \$7.50.
- MRS. DR. NORTON.** A beautiful combination of lavender, pink and cream. Large, well expanded flowers. Doz. \$1.00, 100 \$7.00.
- MRS. LEON DOUGLAS.** Begonia rose and scarlet; striped, largest Gladiolus grown; extremely tall. Each 20c., doz. \$2.00, 100 \$15.00.
- NANCY HANKS.** Rich peach red, larger and taller than Tiplady. Each 35c., doz. \$3.50, 100 \$26.00.
- PEACH ROSE.** Well named. Beautiful flowers of deep tyrian rose, with deeper throat. Peach Rose and Krinkles make a wonderful tyrian duo. Each 15c., doz. \$1.50, 100 \$10.00.
- RICHARD DIENER.** Rose salmon, yellow center, very large. Each 20c., doz. \$2.25, 100 \$16.00.
- SARABAND.** Rich bordeaux, straw yellow throat; one of the finest. Each 50c., doz. \$5.00.
- VIRGINIA.** Pure scarlet with a slightly lighter throat. Nothing of its color equal to it. Doz. \$1.25, 100 \$9.00.
- America.** Delicate lavender pink, large size. Doz. 50c., 100 \$4.00.
- Crackerjack.** Dark red. Yellow throat. Doz. 60c., 100 \$4.50.
- Early Sunrise.** Red, salmon yellow throat; one of the earliest; flowering with huge spikes of 8 to 10 blooms that open at one time. Doz. \$1.25, 100 \$9.50.
- Empress of India.** Rich dark maroon, almost black. A rare color. Doz. \$1.25, 100 \$9.50.
- Evelyn Kirtland.** Beautiful rosy pink, shell pink center. Doz. 80c., 100 \$6.00.
- Giant Nymph.** Very soft rose pink, creamy yellow throat, often six feet tall, with 6 inch flowers. Each 15c., doz. \$1.25, 100 \$8.00.
- Glory.** Exquisitely ruffled and fluted stalks; pink with a neat crimson stripe. Doz. \$1.25, 100 \$9.50.
- Gretchen Zang.** Pink blooms, blending into scarlet on lower petals. A popular color. Doz. 70c., 100 \$5.50.
- Herada.** Pure mauve with deeper markings in throat. Doz. 80c., 100 \$6.00.
- Le Marechal Foch.** Extra large flowers of a delicate pink. Doz. 60c., 100 \$4.75.
- Los Angeles.** Shrimp pink with orange carmine throat, distinct and elegant. Doz. 85c., 100 \$6.00.
- Mrs. Frank Pendleton.** Bright rose with crimson scarlet blotches on lower petals. Doz. 75c., 100 \$5.50.
- Mrs. Francis King.** A fascinating shade of light scarlet. Doz. 60c., 100 \$4.50.
- Niagara.** A soft cream, blending to canary yellow. Doz. 85c., 100 \$6.50.
- Odin.** Exquisite, deep salmon rose, suffused warm orange with broad red spear on lower segments. Giant flowers and very early. Doz. 85c., 100 \$7.00.

GLADIOLUS—Continued

- Panama.** A fine seedling of "America," which it resembles, but blooms deeper shade of pink. Doz. 75c., \$6.00 per 100.
- Peace.** Large flowers, on heavy, straight spike. Pure white, with pale lilac featherings on interior petals. Doz. 65c., 100 \$4.75.
- Prince of Wales.** An early variety; light salmon with orange tinge. Doz. 80c., 100 \$6.00.
- Rose 1910.** A beautiful shade of pure rose pink. Narrow white line through center of lower petals. Doz. 65c., 100 \$5.00.
- Schwaben.** Delicate pale yellow. Darker blotch in center. Doz. 70c., 100 \$5.50.

PRIMULINUS HYBRIDS or "ORCHID"
GLADIOLUS

- A new and profusely blooming Gladiolus of extreme gracefulness, in rich and attractive colors.
- Dorothy Wheeler.** Shrimp pink overlaid and suffused with peach red. Doz. 70c., 100 \$5.25.
- Golden Wedding.** Light orange yellow suffused with burnt orange. Doz. 60c., 100 \$4.75.
- Maidens Blush.** Delicate blush pink. Doz. 50c., 100 \$4.00.
- Myra.** Deep salmon over yellow ground. Yellow throat, pink lines. Doz. 60c., 100 \$4.75.
- Souvenir.** The intense clear yellow of the Buttercup. Doz. 75c., 100 \$5.75.
- Primulinus Hybrids.** Doz. 55c., 100 \$4.00, 1000 \$30.00.

BASSI'S SPECIAL MIXTURE OF
GLADIOLUS

Bassi's Special Giant Mixed. Composed of the finest named varieties and large flowering sorts. Doz. 60c., 100 \$4.50, 1000 \$40.00.

BASSI'S POPULAR MIXTURE

Large, well graded bulbs, in splendid assortment.

Doz. 50c., 100 \$3.50, 1000 \$30.00



GLADIOLUS

Bassi's Special Collection of Nine Modern Gladiolus

A splendid collection of moderate priced Gladiolus of recent introduction. Choice colors; large flowering, sturdy and healthy.

	Doz.	100
ALICE TIPLADY. Beautiful orange saffron.....	\$0.65	\$5.00
BARON HULOT. Rich deep indigo blue.....	1.50	10.00
BYRON L. SMITH. Lavender pink on white ground.....	1.25	9.50
CRIMSON GLOW. A perfect deep scarlet.....	.85	6.00
E. J. SHAYLOR. Beautiful clear rose pink, very strong, tall plant.....	.75	5.75
EVELYN KIRTLAND. Beautiful rosy pink, shell pink center.....	.80	6.00
HALLEY. Delicate salmon pink; one of the best.....	.60	4.50
ROSE ASH. True ashes of roses color.....	.85	6.00
GOLDEN MEASURE. Large, pure yellow; tall vigorous spike.....	1.25	9.50

COLLECTION E— 3 each of the 9 varieties above, 27 bulbs in all.....\$2.00

COLLECTION F— 6 each of the 9 varieties above, 54 bulbs in all.....\$3.70

COLLECTION G—12 each of the 9 varieties above, 108 bulbs in all.....\$7.15

COLLECTION H—25 each of the 9 varieties above, 225 bulbs in all.....\$13.25

25 and 50 at the 100 rate.

DAHLIAS

A LIST OF PRIZE-WINNING AND CHOICE VARIETIES FOR 1932
ALL VARIETIES LISTED ARE ROOTS

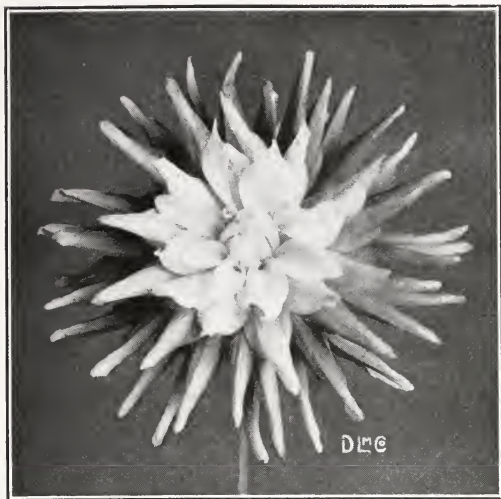
DECORATIVE

- CITY OF LAWRENCE.** A magnificent clear yellow, of largest size—ten inches across. A strong grower and a free bloomer for so large a flower. **Each \$2.50.**
- EAGLE ROCK BEAUTY.** Pink and cream, deepening with the sun; giant flower of perfect form. **Each \$3.00.**
- ELITE GLORY.** A brilliant glowing red color, flowers of immense size, strong, stiff stems. **Each \$2.50.**
- ELIZA LONDON SHEPARD.** The Dahlia Beautiful. The color is rich golden apricot, entirely distinct in coloring, formation and growth. **Each \$15.00.**
- FORT WASHINGTON.** Dark mahogany red color, immense size. Strong grower. **Each \$2.50.**
- JERSEY BEACON.** Chinese scarlet with paler reverse, prolific blooming. **Each \$1.25.**
- KATHLEEN NORRIS.** Color a true rose pink, later deepening to mallow pink, but paler in the young central petals. Broad, overlapping petals with twisted ends, filled to the center. **Each \$10.00.**
- KING MIDAS.** A pure golden yellow. The stems are long, stiff and straight. Acknowledged the greatest yellow. Won in San Francisco as the best Dahlia of Eastern origin. **Each \$7.50.**
- LA ROCCO.** Rich canary yellow, immense blooms; long, stiff stems, very prolific. **Each \$4.00.**
- MARGARET MASSON.** Beautiful silvery rose pink, flower of great depth and size, wonderful exhibition variety on account of its good keeping qualities. **Each \$1.25.**
- MARGARET WOODROW WILSON** Color opalescent. Pink, face of petals creamy white, with a phlox pink reverse. Very beautiful and of enormous size. **Each \$1.75.**
- POP STEWART.** Decorative. Large, pure lilac pink; fine. **Each \$1.50.**
- PRESIDENT HOOVER.** A beautiful Dahlia, color peach-red blending to begonia rose; very bright and luminous. Reflex begonia rose, veined and suffused lavender. Early free bloomer. **Each \$10.00.**
- QUEEN OF THE GARDEN BEAUTIFUL.** Decorative. Very large, fine form; color, soft primrose yellow. **Each \$4.00.**
- ROMAN EAGLE.** Large exhibition decorative of a flaming, brilliant, burnished copper color; one of the most admired Dahlias. **Each \$1.25.**
- RUTH CAVALIER.** A deep rose pink, tinting lighter toward the creamy pink center. Entirely distinct, blooms held erect on long, slender, rigidly stiff stems. Exhibition, garden and cutting. **Each \$7.50.**
- SANHICAN'S BLUEBIRD.** The color is a most uncommon shade. The outer petals at maturity are bright violet blue, while the center retains the violet tint, the nearest approach to a blue Dahlia. **Each \$2.25.**
- SANHICAN'S MAGNATE.** A pale amaranth pink; face of petal tinged with a deeper shade; reverse of petals a solid claret color, heavily veined. **Each \$2.25.**
- TRENTONIAN.** The color is that of an "Indian's skin," a wonderful blending of old gold, amber and coppery bronze, the whole forming a flower of marvelous brilliancy, with a central zone of reddish bronze. **Each \$1.00.**
- WALDHEIM SUNSHINE.** The color is a deep golden yellow, shading to chrome yellow at the center, while the reflex is lightly suffused scarlet. The form is everything that can be desired and has great depth, with a full high center. The past season it was still full to the center when killed down by frost in late October. Very strong, selected roots. **Each \$7.50.**
- WATCHUNG SUNRISE.** Decorative. Very large, golden amber, each petal edged rose pink; reverse of petals, rose pink. **Each \$5.00.**
- WORLD'S BEST WHITE.** One of the best whites, perfect form and free bloomer. **Each \$1.25.**



JERSEY BEACON DAHLIA

CHOICE CACTUS DAHLIAS
CHOICE VARIETIES OF EXCEPTIONAL MERIT



CACTUS DAHLIA

- A. LINCOLN.** Semi-Cactus. Bright spectrum red, reflex rose red. Early and profuse bloomer on slender, rigid stems. Plant grows about 5 feet high, and the blooms often are 8 inches across. Each \$7.50.
- CHEMAR'S MASTERPIECE.** Cactus. Very large, mauve pink. Each \$7.50.
- EDNA FERBER.** Hybrid Cactus Dahlia, named in honor of the author of "So-Big" and "The Show Boat;" an exceptionally fine, stiff stem. Color a glistening coral, shading to old gold at base of petals. Each \$3.50.
- EMMA MARIE.** Beautiful bright pink, with white center. A fine variety. Each \$1.00.
- JERSEY'S SWEETHEART.** H. C. Delice pink tinting to white. Each \$2.00.
- JEAN HARE.** H. C. Very large golden yellow, blending to apricot buff shaded golden bronze. Each \$5.00.

CACTUS

- Ambassador.** Soft yellow at the center, with salmon, amber and pink shadings, gradually deepening toward the tips. Each \$1.00.
- Andreas Hofer.** Delicate shade of pink with salmon flush, shading to a cream white center. Each \$1.50.
- Attraction.** Flowers that measure 8 inches across, with curled and twisted petals. Soft, silvery mauve rose, suffused with white. Each 75c.
- California Beauty.** Almost a pure copper; probably the nearest to this shade. Prolific. Each 50c.
- Daddy Butler.** H. C. Rosy carmine, reverse of petals lighter. Large, free bloomer on stiff stems. Each \$1.00.
- F. W. Fellows.** Intense coral red, suffused deeper in the center. Each 50c.

CACTUS DAHLIAS—Continued

- Gladys Sherwood.** The flowers sometimes reaching 10 in. in diameter; long, curling, glistening white petals. Each 75c.
- George Walters.** A popular variety. Salmon, with shrimp pink shadings. Each 75c.
- Jean Chazot, or Gay Paree.** Beautiful golden bronze, faintly suffused with Nasturtium red. Each 75c.
- Mariposa.** A mammoth with long, incurved petals on a strong, stiff stem. Beautiful shade of pink, the shading deeper in the center. Each \$1.00.
- Papillon.** Large and showy. Color, beautiful blending of old rose with golden "lights." Each \$1.00.
- U. S. A.** A Dahlia of distinctive color, exciting favorable comment wherever it is grown. A pure, deep glistening orange. Each \$1.00.

DAHLIAS, STANDARD VARIETIES DECORATIVE

All splendid exhibition varieties of recent introduction, chosen for their beautiful colors, large blooms and good keeping qualities.

- Amun Ra, or Sun God.** Gorgeous tones of copper and orange, shading to a center of gold and amber, deepening to a dark, reddish brown. Each \$1.00.
- Avalon.** A pure, clear yellow, with a full center. Each \$1.25.
- Bashful Giant.** Apricot, with shading of gold. One of the largest of the Dahlias. Each \$1.00.
- Champagne.** Golden champagne, with chamois shadings. Each \$1.00.
- Colossal Pink.** Clear pink, lighter center. Each 75c.
- Dakota.** Perfect form and heavy, stout stems. Rich coral red, suffused with copper. Each 75c.
- Dolly Varden.** Unusually early and free blooming. Petals twist and curl. Dainty shade of cameo pink, shading to a creamy pink center. Each 60c.
- Earle Williams.** An attractive variegated variety of giant blooms. Brilliant crimson with each petal tipped with white. Very effective. Each \$1.00.
- Elsie Daniels.** Creamy white, shading to lilac pink on outer row of petals. Each \$1.50.
- F. A. Kent.** A beautiful mallow pink held upright on rigid stems. A large flower of exceptional beauty. Each \$1.25.
- Hortulanus Fiet.** Color delicate shade of shrimp pink with petals tipped with gold, suffused with delicate tints of red and yellow. Each 60c.
- Insulinde.** Enormous blooms under ordinary cultivation. Color, golden ochre, suffused salmon red, which deepens toward the center. Each \$1.00.
- Jersey Beauty.** The best all around Dahlia yet introduced. Beautiful flowers of finest true pink of perfect form, supported on long, stiff, straight stems. Early blooming and prolific. A handsome cut flower and one of the very best for garden decoration. Each 75c.

DECORATIVE DAHLIAS—Continued

Judge Marean. Huge flowers which change color as they pass through different stages of development, making combinations of glowing salmon pink, red, orange, yellow and gold, harmoniously blending; an exceptional Dahlia. **Each \$1.00.**

Mrs. I de Ver Warner. An exquisite Dahlia with very large, well formed flowers on long, stiff stems. The color is a handsome mauve pink. **Each 75c.**

Myra Valentine. A golden bronze; prolific bloomer of immense size. **Each \$1.25.**

Post Telegram. A brilliant, garnet red, richly shaded. Vigorous grower and early and continuous bloomer. **Each \$2.00.**

Patrick O'Mara. Large size flowers on good stems. Rich chrome yellow, suffused salmon red. **Each 75c.**

Rosa Nell. Perfect flowers, on long, stiff stems; Color bright rose. **Each 75c.**

Rose Fallon. Beautiful shades of amber, russet and salmon. Perfect bloomer. **Each \$1.25.**

Wizard of Oz. A huge Dahlia of superlative formation perfectly proportioned. Color a rare shade of amber pink, with soft salmon shading. **Each \$1.75.**

**COLLECTION OF SIX CHOICE
DECORATIVE DAHLIAS**

AMUN RA, or SUN GOD. Copper and orange, reddish brown center.....	\$1.00
BASHFUL GIANT. Apricot, with shading of gold.....	1.00
COLOSSAL PINK. Clear pink, light center.....	.75
INSULINDE. Golden ochre, suffused salmon red.....	1.00
JERSEY BEAUTY. Finest true pink, of perfect form.....	.75
PATRICK O'MARA. Rich chrome yellow, suffused salmon red.....	.75
Value.....	\$4.75

Collection, 1 Each, 6 Dahlias \$4.25

SHOW DAHLIAS

A. D. Livoni. A perfect, clear pink, beautifully quilled and very free flowering. **Each 40c.**

Cuban Giant. Very large flowers of a bright maroon. **Each 40c.**

Dreer's White. Pure glistening white, with closely quilled petals. **Each 40c.**

PEONY FLOWERED DAHLIAS

Dreamlight. Pale old rose, with yellow base; perfect Peony formation. **Each \$1.25.**

Drum Major. One of the largest Peony-flowered types; rich, fiery red with lemon yellow center; very prominent. **Each \$1.25.**

Mondscheibe. Large canary yellow. **Each 75c.**

DOUBLE POMPON DAHLIAS

These are the Lilliputian form of the old Ball Dahlia brought to such wonderful perfection and especially valuable for small grounds, beds and border work. Also for cutting and dainty decorations

Archilles. Beautiful light pink. **Each 35c.**

Clara Harsh. Yellow tipped crimson. **Each 35c.**

Clarissa. Pale Primrose. **Each 35c.**

Fairy Queen. Yellow edged crimson. **Each 35c.**

Klein Domitea. Golden terra-cotta. **Each 35c.**

Madeline. Primrose, edged rosy purple. **Each 35c.**

Red Boy. Deep red. **Each 35c.**

Snowclad. The best pure white pompon. Perfect form, early profuse and continuous bloomer for all purposes. **Each 25c.**

One each of the above eight dainty pompon dahlias for \$2.00.

**COLLECTION OF SIX CHOICE
CACTUS DAHLIAS**

ATTRACTION. Silvery mauve rose, suffused white.....	\$0.75
AMBASSADOR. Yellow with salmon, amber and pink shadings.....	1.00
CALIFORNIA BEAUTY. Pure copper.....	.50
DADDY BUTLER. Rosy carmine, reverse lighter.....	1.00
JEAN CHAZOT, or GAY PAREE. Golden bronze.....	.75
U. S. A. Glistening orange.....	1.00
Value.....	\$5.00

The Collection—\$4.50

6 CENTURY SINGLE DAHLIAS

Eckford. White, spotted pink, penciled crimson. **Each 25c.**

Evelyn. White, heavily tipped cerise. **Each 25c.**

Garnet. Rich glowing garnet. **Each 35c.**

Gloxinia. Orchid pink, rich crimson blotch. **Each 35c.**

Rose Pink. Very large, rose pink. **Each 25c.**

New Scarlet. Great improvement over the old scarlet. Brilliant scarlet vermilion. **Each 35c.**

One each 6 Century Dahlias for \$1.25

**BASSI'S NAMED DAHLIA
COLLECTION**

We offer a superb assortment of named Dahlias in separate colors. Each one labeled. **A collection of 12 assorted, named Dahlias for \$5.00.**

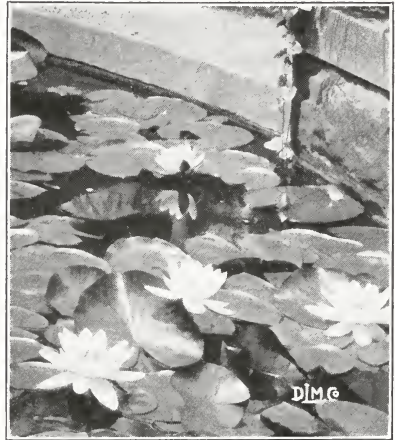
AQUATICS AND WATERLILIES

The Water Garden is one of the finest and most interesting types of garden. It is as adaptable to homes on small plots of ground as it is to large estates.

You can plant hardy Waterlilies from the beginning of May until the latter part of August. The tender varieties not before June.

HARDY NYMPHAEAS

- Alba (English).** The popular white Waterlily. 4 to 5 in. across. Each 75c.
- Sioux.** Combination of orange and glowing amber. Continuous bloomer. Each \$3.50.
- Gladstoniana.** White. 6 to 8 in. across. Each \$2.50.
- Marliacea albida.** White giant, flower fragrant. Each \$2.50.
- Marliacea chromatella.** Canary yellow, very bright; very large. Each \$3.00.
- Marliacea rosea.** Rose of a very deep hue; quite large. 4 to 5 in. across. Each \$3.00.
- Odorata minor.** White; very fragrant; suitable for tubs and small pools. Each 75c.
- Odorata gigantea.** Pure white flowers, almost 7 in. across. Each \$1.00.
- Odorata rosea.** Clear pink; very fragrant. Each \$1.75.
- Odorata W. B. Shaw.** Magnificent, large, fragrant flowers. Rich clear rose pink. Each \$1.75.
- Tuberosa richardsoni.** Globe-shaped flower, immense white flowers, 6 to 8 in. across. Fragrant. Each \$2.00.



WATER GARDEN

TENDER WATERLILIES, OR NYMPHAEAS (DAY BLOOMING)

- August Koch.** An attractive, free flowering plant with large blossoms of a beautiful rosy lilac shade. One of the best of the newer introductions. Each \$3.00.
- Capensis zanzibariensis (Azurea).** Clear azure blue. Each \$2.25.
- Capensis zanzibariensis (Rosea).** Shades of rose. Each \$2.25.
- Panama-Pacific.** A new variety with flowers of a distinctly new shade. Reddish purple with yellow stamens. A perfect beauty. Each \$3.50.
- Pulcherrima.** Flowers continuously, Winter and Summer; fine light blue with yellow center. Each \$2.25.

MISCELLANEOUS AQUATICS

- CYPERUS alternifolius** (Umbrella plant). Each 50c., doz. \$5.00.
- EICHHORNIA crassipes major** (Water-hyacinth) Floating plant, glossy green leaves with pretty, light lavender flowers. 3 for 75c., doz. \$2.50.
- NELUMBIUM speciosum** (Egyptian Lotus). The easiest of all Lotus to grow. The flowers are large, of a deep rose color, shading to cream at base of petals. Dormant tubers. Each \$2.50.
- TYPHA latifolia** (Cattail). 3 for 75c., doz. \$2.50.
- ZIZANIA aquatica** (Wildrice). 3 for 75c., doz. \$2.50.



WATERLILY

INSECTICIDES AND REMEDIES

for Insects and Fungus

- ANSECT (Rose Bug Destroyer).** Highly effective on Rose bugs and other hard-bodied insects, red spider, mealy bug and other garden pests. Use 1 part to 30 to 50 parts water. Does not discolor the foliage or injure the flowers. 1 pint \$1.00, 1 qt. \$1.75, 1 gal. \$6.00.
- ANT KILLER (Key Brand).** For use on lawns, walks, etc. The ants carry the preparation into their hills. They eat it and die. A small quantity will kill an entire colony. Sifter can, weight about $\frac{1}{2}$ lb. 50c.
- ANTROL.** A highly recommended ant killer. Non-poisonous to animals. Very efficient. Sets consist of 4 receptacles and 1 bottle of syrup sufficient to control ants around the ordinary small house. Set \$1.00; extra bottles of syrup, 50c.
- APHINE.** A popular spray used on all kinds of aphids. Use 1 part Aphine to 40 parts water. Mealy bug, white fly, and all soft-bodied insects. $\frac{1}{2}$ pt. 40c., pt. 65c., qt. \$1.00, gal. \$3.00.
- APHISTROGEN.** A scientific aphicide, perfected by Rose specialists, that quickly rids your plants of aphids, the destructive tiny green or pink insects commonly called plant lice. 2 ozs. 50c., $\frac{1}{2}$ lb. \$1.25, lb. \$2.25, 2 lbs. \$3.50, 4 lbs. \$6.50.
- ARSENATE OF LEAD, Powder.** Better than Paris green. Does not burn foliage. Can be used for dusting or wet sprays. Has all the advantage of paste, double its strength and goes twice as far. Lb. to 50 gals. water. Lb. 35c., 5 lbs. \$1.50, 10 lbs. \$2.50, 25 lbs. \$5.00, 100 lbs. \$18.00.
- BLACK LEAF 40 (40% Nicotine Sulphate).** 1 oz. makes 6 gals. of spray. Oz. 35c., 5 oz. \$1.00, 2 lbs. \$3.75, 10 lbs. \$11.85.
- BORDEAUX MIXTURE, Powder.** For blight, mildew, rust, etc. Has all the advantages of paste with double its strength. Can be used both for dry dusting and wet spraying. 1 lb. to 8 gals. water. Lb. 40c., 5 lbs. \$1.50, 10 lbs. \$2.75, 25 lbs. \$5.75, 100 lbs. \$18.00.
- BUG DEATH.** For killing chewing insects on fruits, vegetables and flowers. 10-oz. can 50c.
- CARBON BISULPHIDE (Ant Destroyer).** Poisonous and explosive. For ants in walks, pour a little in each nest; on lawns, insert funnel at intervals of 10 in.; for moles and woodchucks, soak a wad of cotton and place in runs or hole. Can 75c.
- COPPER SOLUTION, Ammoniated.** A fungicide similar to Bordeaux mixture. Used with success against black spot and mildew on Roses and all late sprayings. Qt. \$1.50, gal. \$4.50.
- BORDO-LEAD.** Dry powder insecticide and fungicide combined, consisting of arsenate of lead and Bordeaux in dry form. A two-in-one spray for the control of leaf-eating insects and fungous diseases. Lb. 50c., 5 lbs. \$2.00, 10 lbs. \$3.50, 25 lbs. \$8.00, 100 lbs. \$24.00.
- CUTWORM KILLER.** A coarse powder for sprinkling near the plants. Harmless to animals. Lb. 40c., 5 lbs. \$2.00, 25 lbs. \$7.50.
- CYANOGAS, Grade A.** Dust for destroying aphids, white fly and all other insects. Also for exterminating moles, rats, ants, etc. Directions with every can. $\frac{1}{2}$ lb. 50c., lb. 85c., 5 lbs. \$3.25.
- CYANOGAS, Grade G. (Calcium Cyanide).** For fumigating greenhouses, soils, etc. Lb. 85c., 5 lbs. \$3.25.
- EVERGREEN.** Non-poisonous; effective against both chewing and sucking insects, harmless to all foliage. Oz. 35c., 6 ozs. \$1.00, 16 ozs. \$2.00, 32 ozs. \$3.50, gal. \$13.00.
- FISH OIL SOAP.** For mild forms of scale. To be used on the tenderest foliage. Good for washing off house plants infested with insects. Lb. 40c., 5 lbs. \$1.60, 25 lbs. \$6.50.
- FUNGINE.** A fine remedy for mildew and fungous diseases. Pt. 65c., qt. \$1.00, gal. \$3.00.
- FUNGITROGEN.** A complete spray for mildew and black spot on Roses. Does not injure the foliage. $\frac{1}{2}$ pt. 75c., pt. \$1.25, qt. \$2.00, gal. \$6.00.
- GRAFTING WAX.** Lb. 50c.
- GRAPE DUST.** For mold, mildew or rust on Roses, Grapes, Gooseberries, etc., in greenhouse or open air. Lb. 30c., 5 lbs. 85c., 10 lbs. \$1.60.
- HELLEBORE, Powdered.** For exterminating currant worms. $\frac{1}{2}$ lb. 35c., lb. 60c., 5 lbs. \$2.50.
- INSECTROGEN.** A highly effective insecticide destroying caterpillars, slug worms, Japanese beetle, etc. 4 ozs. 60c., $\frac{1}{2}$ pt. \$1.00, pt. \$1.75, qt. \$2.75, gal. \$8.00.
- KAYSO.** A combined spreader and adhesive. Keeps spray from washing off and reduces arsenical injury. Use one tablespoonful to 5 gals. solution. $1\frac{1}{2}$ lbs. 70c.
- KEROSENE EMULSION (Miscible Oil).** Highly effective against leaf roller and all soft-bodied insects. Qt. 70c., gal. \$1.75, 5 gals. \$7.50.
- KOLOTEX.** An efficient powder for controlling red spider, etc. on evergreens. Good all around dust for this purpose. 5 lbs. \$1.50, 10 lbs. \$2.50, 25 lbs. \$5.00.
- LEMON OIL.** Destroys mealy bug, scale, red spider. Especially suited for spraying house plants. $\frac{1}{2}$ pt. 35c., pt. 60c., qt. \$1.00.
- LIME SULPHUR, DRY.** For dormant spraying of fruit and shade trees. Used for the same purposes and has the same effectiveness as liquid lime sulphur, and is much easier and more pleasant to handle. 1 lb. makes 4 to 10 gals. solution. Lb. 40c., 5 lbs. \$2.00, 10 lbs. \$3.25, 25 lbs. \$6.00.
- LIME SULPHUR, LIQUID.** Qt. 50c., gal. \$1.40, 5 gals. \$4.00.
- MAGOTITE.** For control of root maggot on Cabbages, etc. Lb. 40c., 5 lbs. \$1.50.
- MELROSINE.** A real contact remedy for Rose bug troubles. Kills by contact. Dilute 1 part to 20 or 25 parts. Trial size 50c., pt. \$1.00, qt. \$1.75, $\frac{1}{2}$ gal. \$3.25, gal. \$6.00.
- MEXOGEN.** Kills and repels Mexican bean beetle in the adult lava and egg stages. It also kills and repels other bothersome pests and insects. It is a contact poison. Clean and easy to handle; harmless to humans, birds, dogs. Dilute 6 tablespoons to 1 gal. of water. Pint 75c.

MOLOGEN. Mole killer. Eliminates moles from your lawn within two or three days. Non-poisonous to humans and pets. ½ lb. 50c., 1½ lbs. \$1.25, 5 lbs. \$4.00.

NICOFUME LIQUID. A free nicotine preparation, used by the leading growers, for spraying or fumigating. Does not stain or injure the blooms. ¼ lb. 75c., lb. \$2.00, 4 lbs. \$6.25, 8 lbs. \$11.25.

NICOFUME PAPER. For greenhouse fumigating. 24 sheets, \$1.25; 144 sheets, \$5.00; 288 sheets, \$8.50.

NICOFUME POWDER. Specially prepared tobacco powder fumigant for destroying aphids, thrips, etc. in greenhouses. Lb. can \$1.25, 5-lb. can \$4.00, 10 lb. can \$7.00.

PARA-DI-CHLORO-BENZENE. For destroying Peach borers. Lb. can \$1.00.



POMO GREEN—With Nicotine. An effective remedy and preventive of black spot, etc. Also kills and controls insects on outdoor Roses. A 3-in-1 spray dust. Lb. 75c., 5 lbs. \$3.00, 10 lbs. \$4.50.

NICOTINE PYROX, Bowker's. The best and safest all-round spray, which kills all insects and checks fungous growth. Sticks like paint and doesn't wash off. Safe to use and non-injurious to the plant. Easy to apply. Lb. 50c., 5 lbs. \$1.75, 10 lbs. \$3.25, 25 lbs. \$6.75.



RED ARROW. A deadly contact spray to chewing and sucking insects. Will not stain, burn or blight the tenderest leaf or bloom. No injurious residue left on anything sprayed. Non-poisonous to children or pets but deadly to insects. One ounce makes 4 to 8 gallons of spray. Oz. 35c., 3½ ozs. \$1.00, ½ pt. \$1.75, qt. \$6.00, gal. \$20.00.

SCALECIDE. For the destruction of San José scale. May be used in Winter or Spring, before the leaves appear. Qt. 70c., gal. \$1.60, 5 gals. \$6.00, 30 gals. \$22.50, 50 gals. \$30.00.

SEMESAN. Prevents and controls fungous diseases, quickens seed germination, prevents dampening off of seedlings and invigorates their growth, producing sturdier plants free from disease. 2 ozs. 50c., lb. \$2.75, 5 lbs. \$13.00.

SOLICIDE. For killing the germination of all weed seed, also a worm and ant eradicator. Price on application.

SLUG SHOT. A standard remedy against grubs, slugs, Cabbage worms, etc. Lb. 25c., 5 lbs. 75c., 10 lbs. \$1.25.

SNAROL. For exterminating cutworms, slugs, snails, grasshoppers, etc. Lb. 50c., 3 lbs. \$1.50.

SULPHUR, FLOWERS OF, Powdered. For dusting against mildew, etc. Lb. 25c., 5 lbs. 90c., 10 lbs. \$1.60.

TEROGEN. Ground dressing and soil disinfectant. Destroys the spores of fungi, as well as the lava of most insects, also acts as a fertilizer. 1 lb. 75c., 2 lbs. \$1.25, 5 lbs. \$2.75.

TOBACCO DUST. A fine fertilizer and preventive for insects in the ground. Destroys plant lice. Lb. 20c., 5 lbs. 75c., 10 lbs. \$1.25, 100 lbs. \$6.00.

TOBACCO STEMS. Clean and free from rubbish. A fumigant and fertilizer. Bale, 100 lbs. \$4.00.

TREE TANGLEFOOT. A paste preparation for the trunks of trees in the form of a band. One application lasts for a season and effectually catches all ants, caterpillars and other pests. 1 lb. will make a band 7 to 8 ft. long. Lb. 50c., 5 lbs. \$2.50, 10 lbs. \$5.00, 25 lbs. \$10.00.

TREE WOUND PAINT. Prevents decay and stops bleeding. An antiseptic paint of penetrative qualities and not affected by the elements. Qt. \$1.00, gal. \$3.00, 5 gals. \$14.00.

VERMINE. A soil sterilizer against all soil vermin, larvae, ants, wire, grub and earthworms. It is diluted in 400 parts of water, with which the ground is thoroughly soaked. ¼ pt. 30c., ½ pt. 40c., pt. 65c., qt. \$1.00, gal. \$3.00.

VOLCK. Effectually controls mealy bug, white fly, red spider, aphids, thrips, etc. For indoor plants and garden use. ½ pt. 40c., pt. 65c., qt. \$1.00, gal. \$3.00, 5 gals. \$12.50.

ATLAS NON-POISONOUS WEED KILLER DUSTER. Exterminates all undesirable vegetation, including poison ivy, without danger of poisoning humans or animals. Simply shake powder from can on any undesirable vegetation, weeds, grass, etc. **Duster Can** (kills 300 sq. ft. weeds). Each \$1.50. **Bulk Dry Concentrate** (for making weed killer solution). Large cans (kills 500 sq. ft. weeds) each \$2.00; 50-lb. drums (kills 5000 sq. ft. weeds) lb. 25c.; 200-lb. drums (kills 20,000 sq. ft. weeds) lb. 20c.

X-L-ALL (Liquid Insecticide). A well-known English insecticide. Perfectly safe on all tender plants. Destroys mealy bug, red spider, thrips, and all blights and caterpillars. Used extensively in greenhouse or garden. ½ gal. \$5.25, gal. \$10.00.

WEED KILLER (Dolge's). The most economical and safe to use. Qt. 60c., gal. \$2.00, 5 gals. \$8.00, 10 gals. \$15.00, 30 gals. \$35.00, 50 gals. \$50.00.

WILSON'S O. K. PLANT SPRAY. It kills aphids, thrips, red spider, lace wing fly on Rhododendrons, box mite, Currant worms and many other bugs. For your house plants. ½ pt. 40c., qt. \$1.00, gal. \$3.00, 5 gals. \$12.00, 30 gal. bbl. \$57.00.

WILSON'S WEED KILLER. A clean, odorless, highly concentrated liquid offering a ready, thorough and inexpensive method of killing weeds, or any other undesirable plant growth. Dilute 1 part Weed Killer to 40 parts of water. 1 qt. makes 10 gals., 75c. per qt.; 1 gal. makes 40 gals., \$2.00 per gal.; 5 gals. makes 200 gals., \$8.00 per gal.

WORM ERADICATOR, READE'S ELECTRIC. Diluted with 250 parts of water and sprinkled on your lawn, flower beds, etc., will, in a few moments bring to the surface all worms and grubs that infest and destroy root life. Harmless to all vegetation. Gal. \$4.50, 5 gals. \$17.50, 10 gals. \$30.00, 30 gals. \$90.00, 50 gals. \$150.00.

HIGH GRADE FERTILIZERS

ADCO ARTIFICIAL MANURE

You can make your own manure from your garden refuse, such as grass clippings, weeds, leaves, vegetables, etc. Not injurious to health or animals. Odorless and free from weeds. Mix Adco with layers of any of the above and keep the mixture moist by watering. Adco, 25-lb. bag, enough for 12 wheelbarrows of waste or half ton manure, \$2.00; 150 lb. bag, enough to make 3 tons manure, \$8.75.

BONEMEAL, FINE GROUND

Best for use in top dressing lawns, for Rose beds, trees and shrubbery, and all flowering bulbs. Absolutely no danger of burning, therefore, can be used at all times. For lawns, it is indispensable, promoting a fine growth that no other fertilizer can duplicate. For all hard-wooded plants, such as Roses, trees and shrubs it is invaluable if worked in at the rate of 2 to 4 lbs. per plant, depending on the size of the plants. For lawns, spread at the rate of 10 lbs. to 200 sq. ft. High analysis. 5 lbs. 60c., 10 lbs. \$1.00, 25 lbs. \$1.75, 50 lbs. \$2.50, 100 lbs. \$4.00, ½ ton \$35.00, ton \$60.00.

COW MANURE

Shredded. For top dressing lawns or fertilizing flower beds. 100 lbs. \$4.50, ton \$60.00.

DRICONURE

A new fertilizer. It is dried, fresh cow manure without loss of the Urea; due to the process in which it is dried there is no nitrate or ammonia concentrate loss which are essential to plant life. 50 lbs. covers the same area as 100 lbs. of any other fertilizer. 50 lbs. \$2.75.

FLORANID

A pure nitrogen fertilizer, containing 46 per cent nitrogen. It produces more foliage and of a richer color, more and larger flowers. It makes beautiful lawns and puts new life into shrubs and hedges. It produces a vigorous root system. Lb. 50c., 5 lbs. \$1.50, 10 lbs. \$2.50, 25 lbs. \$5.00.

HORSE MANURE, WELL ROTTED

A necessity for all crops; a natural manure which is also a soil conditioner. Yard \$9.00. 5 yards \$37.50.

HUMUS

Decayed vegetation. The natural product for enriching lawns and flower beds, and stimulating potted plants. A valuable and ideal soil enricher for all garden purposes. The best for loosening hard clay soils and is a fine absorbent for moisture. 100 lbs. will cover 80 sq. ft. 1 in. thick. For potting, it is ideal, mixing with soil at the rate of half humus to half soil. 10 lbs. 60c., 25 lbs. \$1.00, 50 lbs. \$2.00, 100 lbs. \$3.00, ½ ton \$17.50, ton \$30.00.

LIME, AGRICULTURAL, Hydrated

Specially prepared for sweetening lawns and acid soils. 10 lbs. 50c., 50 lbs. \$1.75, 100 lbs. \$2.50, ton \$30.00.

LIMESTONE, PULVERIZED

Slower than hydrated lime in its action, but more lasting. 100 lbs. \$1.50, 500 lbs. \$7.00, ton \$16.00.

Lōma

TRADE-MARK REG. U.S. PAT. OFF.

Loma, the scientifically prepared plant food, will give you results that are startling. Lawns velvety green; flowering plants sturdy, full bloomed and tall. Loma works quickly. In a week's time you can see the difference in your lawn. 5 lb. carton, enough for 10 ft. x 10 ft., 50c.; 10 lb. bag, enough for 10 ft. x 20 ft., 85c.; 25 lb. bag, enough for 20 ft. x 25 ft., \$1.75; 50 lb. bag, enough for 25 ft. x 40 ft., \$3.00; 100 lb. bag, enough for 40 ft. x 50 ft., \$5.00; ton (2000 lbs.) \$80.00.

NITRATE OF SODA

A plant stimulant for a rapid and vigorous growth, and to aid plants which are backward because of cool weather. Soluble, can be dissolved at the rate of 1 tablespoonful to a pail of water and applied directly to the roots. Lb. 20c., 5 lbs. 60c., 10 lbs. 90c., 100 lbs. \$5.75.

NITROPHOSKA

All plant growers should remember that plants drink their food, that a water soluble, quickly available fertilizer like Nitrophoska gives quickest results, while promoting vigorous growth. It is "different" from other fertilizers. **Nitrophoska 15-30-15**, is a general, all-purpose fertilizer—every ounce available—no waste. Four times stronger than the usual fertilizers. One pound equals 40 lbs. of best manure. Lb. 30c., 5 lbs. \$1.00, 10 lbs. \$1.85, 25 lbs. \$1.50.

SHEEP MANURE

Pure pulverized. A nutritious fertilizer. Immediate and lasting in effect. For flower beds or for making new lawns, and indispensable for helping to loosen up hard, clay soils. Free from weeds. 5 lbs. 50c., 10 lbs. 90c., 25 lbs. \$1.50, 50 lbs. \$2.25, 100 lbs. \$4.00, ½ ton \$35.00, ton \$60.00.

PEAT MOSS, GRANULATED

Our "fine quality" peat moss is especially prepared for horticultural purposes. It is of fine, soft, uniform texture and has an absorption power of 18 to 21 times its own weight. For mulching lawns, Rose and Rhododendron beds, evergreens and perennial borders; the superior material. 100 lbs. \$2.00; bale of about 190 lbs. \$3.75; 3 to 5 bales at \$3.50; 5 to 10 bales at \$3.25.

STIM-U-PLANT

A plant food in tablet form to stimulate growth in all kinds of house plants. Tablets can be dissolved in water or can be placed in the soil around the roots of the plants, then watered. 30 tablets, 25c.; 100 tablets, 75c.; 1000 tablets, \$3.75.

SULPHATE OF AMMONIA, Arcadian

A highly concentrated nitrogenous top dressing. Soluble; can be used either dry or in liquid form. The best fertilizer for all garden crops. Contains 24½ per cent ammonia. 5 lbs. 75c., 10 lbs. \$1.25, 25 lbs. \$2.25.

MURIATE OF POTASH

The best fertilizer for all acid loving plants such as Rhododendrons, Azaleas, Kalmias, etc. Water thoroughly after spreading. 5 lbs. 85c., 10 lbs. \$1.50, 25 lbs. \$2.25, 100 lbs. \$5.75.

SUPERIOR HOUSE PLANT FOOD

A valuable fertilizer for house plants of all kinds. Highly soluble, and can be used in liquid form by dissolving in water. 25c., 50c., 75c. and \$1.00 cans.

SPECIAL TREE AND SHRUB FOOD

To promote full, green, healthy foliage on trees and shrubs. Quick acting and odorless. A concentrated fertilizer evenly balanced and containing all the ingredients necessary for their healthy growth. 100 lbs. \$5.50 500 lbs. \$25.00, ton \$70.00.

TANKAGE

Fine for greenhouse and outside use. A fine fertilizer for Grape vines. 100 lbs. \$5.00, 500 lbs. \$22.50, ton \$80.00.

VIGORO
Complete plant food

Vigoro, A specially prepared plant food for lawns, flowers, gardens, shrubbery and trees; a highly concentrated and evenly balanced fertilizer. Has no unpleasant odor and is easily applied. 5 lb pkg. 75c., 25 lbs. \$2.25, 50 lbs. \$3.00, 100 lbs. \$5.00.

ENGLISH AND OTHER IMPORTED FERTILIZERS

CLAY'S FERTILIZER

Well known English fertilizer of high quality. Especially suited for greenhouse work. 28 lb. bag \$4.50, 56 lb. bag, \$8.00, 112 lb. bag \$13.00.

THOMPSON'S TOP DRESSING

A fine English preparation recommended for Chrysanthemums; also good for general purposes. 28 lbs. \$3.25, 56 lb. bag \$6.00, 112 lb. bag \$11.00.

INDEX

	Page		Page
Adco.....	46	Grasses.....	5
Agricultural Seeds.....	33	Greenhouse Plants.....	34-36
Amaryllis.....	37	Herbs.....	33
Anemones.....	37	Hyacinthus.....	37
Antirrhinum.....	6, 11	Humus.....	46
Asters.....	6, 7, 12, 13	Insecticides.....	44, 45
Azaleas.....	35	Lawn Grass.....	4, 5
Bedding Plants.....	34	Madeira-Vine.....	37
Begonias.....	7, 13, 35, 37	Millet.....	33
Buckwheat.....	33	Novelties.....	6-10
Bulbs.....	37-42	Nymphaeas.....	43
Callas.....	37	Oats.....	33
Cannas.....	37	Palms.....	36
Carnations.....	14, 35	Peas, Field.....	31
Chrysanthemums.....	14, 35	Peat Moss.....	46
Cinnamon Vine.....	37	Perennial Plants.....	24-26
Clovers.....	5, 33	Potatoes.....	31
Corn, Field.....	33	Rape.....	33
Dahlias.....	40-42	Rye.....	33
Ferns.....	36	Seeds.....	4-33
Fertilizers.....	46, 47	Sweet Peas.....	22
Field Seeds.....	33	Tuberoses.....	37
Flower Seeds, Annual.....	11-23	Vegetable Seeds.....	27-33
Flower Seeds, Novelties.....	6-10	Waterlilies.....	43
Flower Seeds, Perennial.....	24-26	Wheat.....	33
Gladiolus.....	38, 39	Zinnias.....	23

INFORMATION

GARDEN QUERIES

We endeavor to answer all correspondence promptly, all questions pertaining to *gardening and horticulture*. The services of our different departments are at your disposal.

DELIVERY OF SEEDS, ETC.

We prepay delivery in the United States and possessions on all flower and vegetable seeds, in any quantity, by parcel post or express, at our option.

Bulbs, Roots and Perennial Plants are delivered free east of the Mississippi by parcel post or express at our option.

West of the Mississippi a charge of five cents per each lb. will be made.

Insecticides and Fertilizers are shipped f. o. b., New Rochelle, except in Westchester and Fairfield Counties, in which deliveries are free.

GARDENERS AND SUPERINTENDENTS SITUATIONS

We have at all times the names of practical gardeners, estate superintendents and farm managers in want of situations. If at any time you desire such, communicate with us and we will put you in touch with men whom we deem suitable. This service is of no charge to you.