

Historic, archived document

Do not assume content reflects current scientific knowledge, policies, or practices.

62.09

1932

LIBRARY

RECEIVED

★ MAR 21 1932 ★

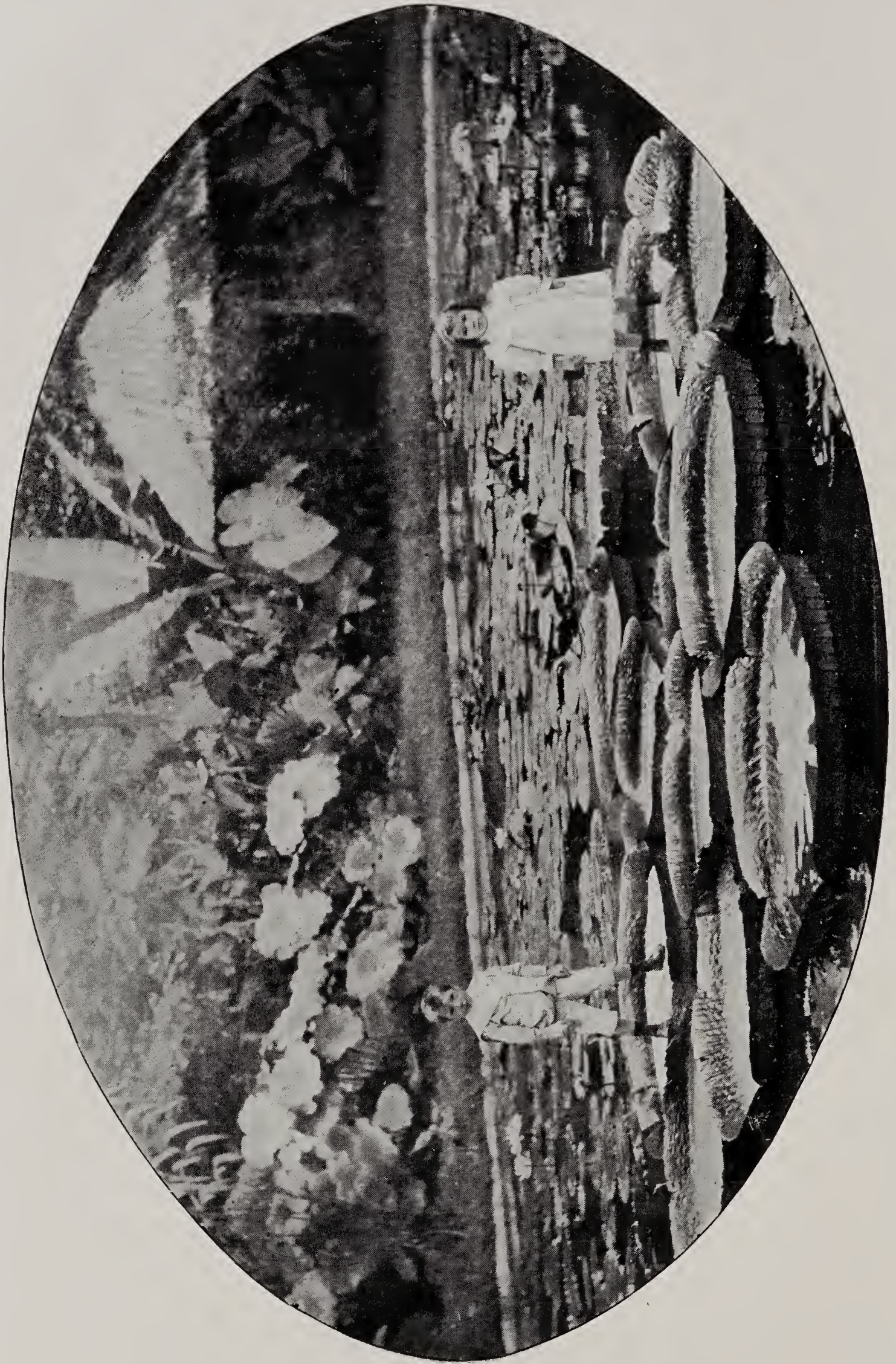
U. S. Department of Agriculture.



WOODFORD WATER GARDENS

6158 Fulton Avenue

VAN NUYS, CALIFORNIA



WOODFORD WATER GARDENS



Nymphaea Marliacea Rosea

WATER GARDENING has increased in popularity in recent years more than any other kind of gardening for pleasure. As a woman caller at our gardens stated to the writer: "I got tired of the hard work in my garden, and put in pools instead, and now I neither pull weeds nor water the plants." When one considers that in the pool, once planted, one has a succession of blooms the whole Summer through without effort, it places it in the front rank for returns on the investment of cost and labor.

Added to the plants and blooms, there are the gold fish, quite necessary to keep the water free from mosquito larvae, and much pleasure may be derived from raising the finny pets. No experience is necessary, just plant Lilies and aquatics in the pool; they do the rest.

The writer will say this: Buy of reliable growers whose catalogs describe the plants so that the buyer can make selection to suit his fancy and purse.

Our growing business is, we believe, proof that we are one of the reliable ones.

We ship out only such plants as we would want to receive were we on the buyer's end.

Discount to dealers.

F. D. WOODFORD, *Proprietor*

WOODFORD WATER GARDENS



Gladstone (See page 3)

Waterlilies

Planting and Care—Waterlilies are in two general divisions, hardy and tender or tropical. Hardys have roots or rhizomes and can be taken up and replanted any time of the year when it is not freezing. Tropicals have bulbs which send out roots. The foliage and the roots die at the approach of Winter and the bulb may be dug and kept in moist sand until freezing weather is over, then planted in the pool. This applies also to the care of the Hardys in cold parts of the country. In the South and in California, Lilies need no attention except to refertilize the pool once in two years. In planting, spread 3 inches of cow fertilizer on floor of pool or in bottom of box and spread 8 to 10 inches of soil on top of this. Fill pool up to top of soil and press root or bulb down into the mud. Then fill pool. Hardys should be allowed 2 feet by 2 feet space and tenders twice that amount of room.

Hardy Waterlilies

PINK

Amabilis. This Lily justifies its name, which means pleasing. The flower, a bright silver pink above the average in size, produced in astonishing profusion. It is too good to leave out of your selections for the water garden.....\$5.00

- Marliacea Carnea** (Marliac Pink). Beautiful flesh pink flowers of good form. Blossoms are large, the plant strong and exceptionally free blooming. A Lily that deserves a place in every pool.....\$1.00
- Marliac Rose.** The deep pink, fragrant flowers are cup-shaped, of good size and form, and freely borne. The first to open in the morning. A vigorous grower..... 2.00
- Masaniello.** A fine, free flowering variety. The plant is a strong grower producing flowers of an exquisite shade of pink. A very desirable Lily..... 2.50
- Rose Arey.** This Lily was awarded a Silver Medal by the New York Horticultural Society. The flowers are a deep cerise pink, petals pointed with a noticeable curl, giving the effect of darker shading near the edges. One of the best of the Odorata group. A very popular Lily..... 2.50
- Somptuosa.** One of the largest and best of the pinks. The broad, open flowers are deep pink near the center, growing lighter outward. The plant is a strong grower. A recent introduction..... 3.00
- Splendida.** A recent French introduction, the flower a deep strawberry pink, of good form and texture. A splendid Lily, as its name implies..... 3.00

WHITE

- Gladstone.** Very large, cup-shaped flowers that open early in the morning as well as early in the season. Vigorous grower and should have plenty of room.....\$1.50
- Gonnere.** A recently introduced Lily that easily ranks as the best of the hardy whites. Flowers an enormous globe of dazzling white produced in great profusion over a long blooming season. We highly recommend this Lily..... 5.00
- Hermine.** The flowers are pure white, of starry form, making them quite different from the broad-petaled types. A very free bloomer. 2.00
- Marliacea Albida** (Marliac White). Large, dazzling white flowers with yellow stamens, making a startling contrast. Large pads of bright green with a pink shading on the under side..... 1.00

RED

- Attraction.** An immense flower, bright red in color, freely produced. They open a brilliant garnet red, the four outer sepals almost white. As the flower ages the color deepens to rich crimson. One of the best Lilies in our gardens.....\$5.00
- Carmine Laydeker.** The carmine red flowers are borne in great profusion. A fine Lily for the small pool as the plant is dwarf in habit of growth..... 1.50
- Conqueror.** The flower, under proper plant treatment, will attain a size of 8 inches in diameter. Color carmine red, the petals flecked with white with lighter sepals. A combination in color that has caused this Lily to be called the handsomest of the hardies. The plant has every good point desired. Strong growing and exceptionally free blooming..... 3.00

WOODFORD WATER GARDENS



Conqueror. (See page 3)

- Escarboucle.** The most brilliant flowered red among the Waterlilies. Bright intense red deepening to crimson; the garnet stamens an effective foil. The plant is a strong grower, producing its strikingly beautiful flowers in profusion. This is one of the best of all hardy Lilies. \$5.00
- Gloriosa.** The hybridist who brought this Lily to flower said it would be impossible to picture a more glorious sort, so named it Gloriosa. Brilliant red double flowers of exquisite cup shape, most freely borne. A very popular variety. 3.50
- James Brydon.** An old American variety that is yet in good demand because of its great merit. The flower is rosy crimson, large and broadly cup-shaped, making a most attractive blossom. The leaves tinged with bronzy red, and very ornamental. 2.50
- Marliac Red.** Bright red flowers freely produced. An old variety and a good companion to the other Marliac Lilies. 2.50
- Red Laydeker.** This splendid Lily produces all through the Summer a succession of vivid red flowers of good size. A Lily of great merit. 3.50
- Robinsoni.** Flowers of good size and freely borne, petals red streaked with yellow, the general effect being orange red. Leaves mottled and prettily ruffled on the sinus 2.50



Sunrise. (*Odorata sulphurea grandiflora*)

YELLOW

Chromatella (Marliac Yellow). Of the Marliac family and a good plant, producing in profusion well formed blossoms. A strong grower.....\$1.50

Mexicana. Wild Lily of Mexico. Flowers fragrant, bright yellow, standing well above the water. Desirable for small pools..... 1.00

Sunrise (*Odorata Sulphurea Grandiflora*). This Lily has deservedly received unlimited praise. One that causes an exclamation of astonishment from the observer when introduced to it. Throughout the Summer it produces enormous flowers of brightest yellow, with long lanceolate petals. A flower that is hard to describe, but which has a grace and beauty all its own. One caller at our gardens, after drinking in its beauty, said: "Oh, it is magnificent." We leave it at that; it surely is..... 5.00

Yellow Pigmy. Being a pigmy in growth, this Lily is well fitted for tub culture or for the small pool. The attractive little flowers are freely borne over a long season..... 1.00

WOODFORD WATER GARDENS



Chromatella.—(See page 5)

SUNSET COLORS

Aurora. This Lily derives its name from the changing colors of the blossoms. It opens yellow warmed with amber, and deepens daily to dark red. Gives the grower a range of color all on one root. Semi-dwarf in growth. Free flowering. Desirable for tub culture. \$1.50

Comanche. The best of all the copper or apricot colored sorts. A large flower, with long pointed petals of amber red overlaid with yellow. Strong growing plant, having a long blooming season. This Lily deserves the praise it gets from every one who sees it. . . 3.00

Paul Hariot. A copper pink flower of good size and fine form that deepens its color with age. An exceptionally good sort with a long blooming season. 2.50



A few of our propagating Pools

WOODFORD WATER GARDENS



6158 Fulton Ave., Van Nuys, California



WOODFORD WATER GARDENS

Tropical Waterlilies

Tropical or tenders may be planted in Eastern States June 1st and after.
Southern States and California, May 15th and after.

- August Koch.** Large, deep blue flowers. The plant very persistent, flowering soon after planting. It is of the viviparous group, producing new plants at base of leaf. \$2.00
- Blue Triumph.** The immense deep blue flowers of this new variety often reach a foot in diameter. A very strong and persistent grower, producing its beautiful, fragrant flowers in great numbers. 3.50
- Caerulea.** The wild Blue Lotus of Egypt. The fragrant, sky-blue flowers are borne in endless succession until the frosts of Autumn. 1.50
- California.** The deep blue flowers are large and fragrant, leaves large with scalloped edges and blotched with mahogany spots. A splendid bloomer. Needs lots of room. 3.50
- Capensis.** A native of Africa. The flowers are cup-shaped and sky blue in color. 1.50
- Mrs. C. W. Ward.** Flowers deep rose pink, star-shaped, and produced in profusion. Leaves prettily scalloped. The best of the tropicals for cut flowers. 2.00
- Mrs. Edwards Whittaker.** A strong growing plant producing freely immense, fragrant, sky blue flowers. It is a persistent hardy plant. 2.50
- Mrs. Geo. H. Pring.** Ours is the true Pring, the stock, which we were fortunate in obtaining, coming from the Missouri Botanical Gardens, where this Lily originated. Immense snow-white flowers, profusely borne through the entire Summer. Blossoms open in early morning, remaining open till evening. The only really good white tropical. A splendid contrast to the colored varieties. 2.50
- Mrs. Woodrow Wilson.** Sky blue flowers of good form and very fragrant. The plant is one of the leaf bearing or viviparous group. 2.50
- Panama Pacific.** A viviparous plant, and free flowering. The buds as they rise out of the water are bronzy green, spotted with reddish brown, open a rich rosy red with yellow stamens. Young plants spring from the base of the leaf. 2.50
- Pennsylvania.** A magnificent old variety that from sheer merit continues to be considered one of the best blue tropical Lilies. The buds are prettily speckled with maroon and open a deep blue. The stamens are yellow in the cup and tipped with blue, making a pleasing combination. The flowers have a powerful but pleasing fragrance. Very free bloomer. 3.50
- Red Zanzibar.** Flowers are rosy red, borne on tall stems, and do not fade with age. They are freely produced and are very desirable for cutting. Fragrant. 3.50
- Stella Gurney.** A free flowering Lily producing fragrant blossoms of bright pink with long pointed petals. The large green pads are ruffled at the margin. 2.00
- Wm. Stone.** Star-shaped purple flowers freely borne on tall stems. The margins of the leaves are scalloped. The flowers last well when cut. 2.00
- Zanzibar Blue.** Large, star-shaped flowers, borne on tall stems a foot above the water. Bud opens purple fading to blue as it develops. Fragrant. 1.50

Night Blooming Tropical Lilies

The night bloomers have been called the business man's Lilies, since they open in the evening and remain open until about 11 a.m. We have a large list of exceptionally good night bloomers.

- Devonshire.** Bright, rosy red flowers borne on tall stems. Long pointed petals. Leaves dark maroon with serrated edges.....\$2.00
- Frank Trelease.** Flowers a rich glowing crimson, leaves a beautiful dark bronze..... 1.50
- George Huster.** A large, brilliant red flowered variety, the blossoms often attaining a diameter of 12 inches. Beautiful bronzy red leaves crimped at the margins. The best red night bloomer..... 2.50
- Juno.** Immense pure white flowers, the center bearing a cone of saffron yellow stamens. The plant bears large, glossy green leaves with finely toothed edges. A fine flower..... 2.50
- Lotus Dentata.** A large white variety with yellow stamens..... 1.50
- O'Marana.** Rosy pink flowers of large size, each petal having a distinct white stripe. One of the best of the night bloomers..... 1.50
- Rubra Rosea.** Produces freely blooms of a brilliant rosy carmine.... 1.50

LOTUS (*Nelumbium*)

This plant brings to mind the ancient lore of a civilization that flourished thousands of years ago along the banks of the Nile. The flower is the same today, as evidenced by blossoms found in recently opened tombs.

Tubers sold only in March and April. After that in tubs.

-
- Alba Grandiflora.** Flowers pure white, large and very fragrant.
Dormant tubers.....\$2.50
In tubs..... 5.00
- Speciosum.** Exquisite flowers of rose pink. Free flowering.
Dormant tubers..... 2.50
In tubs..... 5.00

Marginal Plants

- Elephants-ear.** Immense leaves of bright emerald green.....\$0.25
- Fountain Grass.** Narrow, stiff blades grow in clumps to height of 2 ft. surmounted by feathery plumes..... .25
- Hemerocallis.** These are especially good for the border, as they thrive anywhere in the United States. They form graceful, grass-like clumps, bearing bell-shaped, fragrant flowers. We offer two good varieties:
- H. kwanso.** Large, double flowers, tawny orange red and free blooming..... .25
- H. flava.** Sweetly fragrant, lemon yellow flowers on tall stems. Good for cutting..... .25

WOODFORD WATER GARDENS

MARGINAL PLANTS—Continued

- Torch Lily** (*Tritoma*). Tall spikes of brilliant orange-yellow and red flowers. Make a beautiful marginal plant. \$0.25
- Umbrella Palm.** Grows as well outside of the pool as in it. Is used extensively as a border plant and gives the pool a setting of tropical appearance.25
- Yellow Flag.** This yellow Iris is as much at home out of the water as in the pool and makes a good marginal plant.25
- Zebra Grass.** Tall, quill-like reeds banded alternately green and white, grows to height of 4 to 5 ft. Does equally well by the pool side as in the water.25

Shallow Water Plants

Except where otherwise indicated, water plants should be planted in shallow water near the edge of the pool.

- Azure Pickerel Plant.** Attains a height of 4 to 5 ft. Each leaf bearing a spike of sky blue flowers. \$0.25
- Baby Anacharis.** Same as Anacharis, but of dwarf growth. Good for aquarium. Do not plant in pool as it becomes a nuisance.15
- Blue Spoonflower.** The deep, bluish green foliage and purple stems make it an attractive plant. Only the roots should reach the water. .75
- Crinum Americanum.** An easily grown and beautiful bulbous plant related to Amaryllis. The large, white, Lilylike blossoms are borne in spikes of six to eight. Grows in any kind of soil, preferring wet situations, thriving in the pool if only the roots reach the water. .50
- Duck Weed.** The smallest floating water plant. Fish eat it. A good oxygenator. Per bunch.15
- Eel Grass** (*Vallisneria spiralis*). Long ribbonlike leaves that will come to the surface through 1 to 2 ft. of water. Blossom consists of a long, threadlike spiral. Pretty in aquaria.15
- Floating Heart.** This plant has leaves like a miniature Waterlily. Bears profusely bright yellow flowers. Hardy.25
- Giant Anacharis.** The most used for aquarium. Graceful stems with whorls of deep green leaves. Good also for the pool .15
- Giant Double Arrowhead.** Plant has large, arrowhead leaves and bears a flower spike bearing 10 or more balls of white bloom. Grows to height of 2 to 3 ft. Goes dormant in Winter and bulbs may be dug and kept in wet sand until Spring. Very pretty plant. .50
- Japanese Arrowhead.** Arrowlike leaves 1 ft. high. Blossoms have three petals and yellow center.25
- Japanese Hyacinth.** Grows in clumps in shallow water, bearing small purple flowers all through the Summer. Per plant 15c., 4 for50



Trailing Water Hyacinth. (See page 14)

SHALLOW WATER PLANTS—Continued

- Myriophyllum.** A pretty aquatic with fine, hairlike leaves. Good for the pool, where the fish prefer it to other plants for a spawning place. The plant is clean and does not harbor enemies of small fish. \$0.25
- Palm Grass.** A graceful, palmlike grass that grows to height of 3 to 4 ft., and forms a large clump in one season. Leaves are pleated, arching gracefully. Very ornamental..... .25
- Papyrus** (Egyptian Paper Plant). May be grown in shallow water, where it makes a good centerpiece, or at the pool side..... .50
- Parrotfeather.** May be planted in a water tight hanging basket or near the edge of the pond where it will creep over the border and out among the Lilies. The bright green whorls of feathery leaves make it an attractive plant..... .15
- Pickerel Plant.** Grows to height of 1 to 2 ft., has heart-shaped leaves and bears spikes of purple flowers throughout the Summer. .25
- Primrose Willow.** An easily grown and pretty willowy-shaped plant that carries many yellow Poppylike flowers all through the growing season..... .35
- Spear Head** (*Saggitaria natans*). Lancelike leaves and spike of white blossoms with yellow eye..... .15

WOODFORD WATER GARDENS

SHALLOW WATER PLANTS—Continued

Trailing Water-hyacinth (*Eichhornia azurea*). A very satisfactory variety of Hyacinth. Flowers a rich blue with a purple throat and a yellow eye. A rank grower, the creeping runners covering several square feet of water surface in a single season. Plant in 6 to 10 in. of water among the Lilies...\$0.50



Water Snowflake. (See page 15)

Water Buttercup.

Long trailing stems with waxy leaf and bearing small yellow flowers.

When planted in shallow water near the edge of the pool the runners will climb out of the water and trail along the border. \$0.25

Water Canna

(*Thalia dealbata*). Has Cannalike leaves with maroon spot at base, growing on stalks 5 to 6 ft. high. An attractive purple blossom covered with a lavender dust. Hardy, a strong grower, and desirable as a centerpiece in the pool, or to place in a recessed corner..... .50

Water Clover.

If you have this plant you can win the game of hunting 4-leaf clover, for each stem carries four leaves..... .25

Water Hawthorne.

An interesting plant, producing snowwhite flowers with the fragrance of the English Hawthorne. The leaves are oblong and float on the water. The flower spike is forked and each floret speckled with tiny black antlers. In the South and in California it blooms through the entire Winter. Plant in one foot of water among the Lilies..... .50



Water Hawthorne

Water-hyacinth

(*Eichhornia crassipes*). Flowers delicate lilac in trusses like a Hyacinth. Does best in partial shade as the sun burns the air filled petioles, or bind the plants together in a close bunch with a hoop or wire. The roots may be anchored to the earth with a stone until they become rooted. Per plant 15c., 4 for .50

SHALLOW WATER PLANTS—Continued

- Water Lettuce.** A broad, velvety green leaf, growing in clusters.
 Good for aquarium \$0.25
- Water Poppy.** Sulphur yellow flowers borne all through the Summer.
 Plant increases by runners. Hardy. 3 for25
- Water Snowflake.** A pretty little plant with floating leaf. The blossom bears five frosty petals with yellow center. Flowers spring from the base of the leaf and roots form on the lower side making a new plant. Requires about 6 in. of water25

Water Iris

Iris should be planted in very shallow water or in a wet place.

- Blue Flag** (*I. hexigona*). Large, porcelain blue flowers. A very charming Iris \$0.50
- Iris Pseudacorus (Gigantea).** A splendid plant attaining a height of 6 ft. bearing golden yellow flowers. The longer the clumps grow undisturbed the better it blooms25
- Purple Water Iris.** Grows to a height of 2 to 3 ft. and produces a pretty spike of purple flowers25
- Yellow Flag.** 6 feet, deep yellow25

Iris Kaempferi (Japanese Iris)

Japanese Iris when planted in wet soil at the border of the pool affords the water gardener an opportunity of producing flowers that for beauty are unexcelled by any other plant at the pool side, and call forth words of praise from those who view them. Visitors at our gardens have expressed astonishment at the large and beautiful blossoms produced by the different varieties of Japanese Iris growing there. We have selected five varieties for propagating what, we think, represent the best in this kind of Iris.

- Gold Bound.** A fine double pure white with creamy glow and gold banded center \$0.35
- Jeanette Parry.** Large single. Orchid color flecked with purple, golden throat. Beautiful35
- Kuro-Kumo.** Purple overlaid with dark blue, yellow and white blotches35
- Purple and Gold.** Double, rich violet, purple with white petaloids tipped violet. Golden throat35
- Ucheu.** This word in Japanese means universe. It is their way of saying this flower is matchless. Double caerulean blue with golden center and white35

One of each of the above 5 Iris for \$1.50

WOODFORD WATER GARDENS

Plants for Rockeries

Very often small rock gardens are built in connection with the pool. We have a few good plants to be used in such a place.

- Armeria (Vulgaris).** Grows in grassy tufts. Flowers of rose pink color freely borne on 6 in. stems.....\$0.15
- Baby Tear.** A moss that is good to plant in the crevices between the rocks where it will be shaded and damp. Per portion..... .15
- Iceplant.** Dark green, frosty leaves with an abundance of little red blossoms. No plant will so quickly cover a bare spot in the garden, as it grows marvelously fast..... .15
- Myrtle (Variegated).** Its runners, with green and white leaves growing in pairs, trail over the ground in a quick growth. Flowers blue. .15
- Ribbon Grass.** Grows in clumps 1 ft. high, its ribbonlike leaves streaked green and white..... .15
- Trailing Lantana.** Runners arching over and trailing on the ground, covered throughout the Summer with fragrant blossoms. .25

Goldfish

All fish are in good healthy condition when sold at our gardens, or when shipped. We do not assume any responsibility for loss, damage or delay in transit, nor for results after delivery.

Orders must be accompanied by the cost of the fish plus 50 cts. for the shipping can.

If pairs are wanted we will endeavor to select the sex, but cannot guarantee this. We do not prepay express.

- Calico Fantail.** Shape same as Japanese Fantail, with the color of the Shubunkin. Very handsome.
- | | | |
|-----------------|----------|--------|
| 1 year old..... | per pair | \$1.50 |
| 2 year old..... | per pair | 3.50 |
- Calico Telescope.** Same in shape and color as Calico Fantail, but with protruding or telescope eyes.
- | | | |
|-----------------|----------|------|
| 1 year old..... | per pair | 1.50 |
| 2 year old..... | per pair | 3.50 |
- Comet.** Long flowing tails. Fish of bright red color. Very quick in their movements.
- | | | |
|-----------------|----------|------|
| 1 year old..... | per pair | 1.00 |
| 2 year old..... | per pair | 2.50 |
- Japanese Fantail.** Short bodied broad, fantailed fish of bright golden color.
- | | | |
|-----------------|----------|------|
| 1 year old..... | per pair | 1.00 |
| 2 year old..... | per pair | 2.50 |
- Moor.** A bluish black fish with telescope eyes and broad fantail.
- | | | |
|-----------------|----------|------|
| 1 year old..... | per pair | 1.50 |
| 2 year old..... | per pair | 3.50 |
- Shubunkin.** A beautifully colored fish with a background of blue on which is laid a pattern of red, gold and black.
- | | | |
|-----------------|----------|------|
| 1 year old..... | per pair | 1.00 |
| 2 year old..... | per pair | 2.50 |

WOODFORD WATER GARDENS

Snails

These are quite necessary in the aquarium and in the pool. They are scavengers, and their work keeps the water clean of rotting vegetation and dead fish or other decaying matter, thus helping very greatly to insure good health among the fish.

We sell several kinds and they are all good.

	Each	Doz.
African Papershell. Medium size with pretty spotted shell.	\$0.05	\$0.50
Black Pond. Active and good scavengers.....	.05	.50
Japanese Trap Door. The largest of the common water snail. Interesting to observe.....	.10	1.00
Ramshorn. A good hardy pond snail.....	.05	.50

Fish Food

Goldfish should be fed three times a week, but only such an amount that the fish will eat in a few minutes. Overfeeding is sure to cause sickness.

Ground Shrimp. Good to feed sparingly together with Tamafu.....	Per lb.	\$1.00
Mixed Fish Food. Compounded by ourselves. A good balanced ration food.....	Per lb.	.50
Tamafu. A Japanese rice biscuit. It floats, showing when the fish have eaten all their food.....	$\frac{1}{2}$ lb. package	.50

ADVICE freely given to those intending to build pools. **I**nformation pertaining to the water garden, to the care of the fish, to the best lilies and plants for your pool, will be gladly given for the asking.

We wish to serve.



WOODFORD WATER GARDENS
6158 Fulton Avenue, VAN NUYS, CALIFORNIA