

Historic, archived document

Do not assume content reflects current scientific knowledge, policies, or practices.



2, 71

-1933

INDEXED

LIBRARY
RECEIVED
★ MAR 12 1933
U. S. Department of Agriculture

Every Need In Nursery Stock

*Rare Shrubs and Plants
Reasonable Prices
Better Service*

Nursery and Sales Yard Located
One Mile south of U. S. 12
Three Miles East of Hartford
or Three Miles West of Lawrence.

HILL TOP Orchards & Nurseries

J. H. HEUSER, Owner
Hartford, Mich. Phone: 203F22



Start a Rock Garden. See page 20.

Instructions for Ordering

Order Early. Many items will be sold out as the season advances. Early orders will be reserved and shipped on the date you specify if weather permits.

Remittances. Send money by postal or express money order, personal or cashier's check, made payable to Hill Top Orchards and Nurseries. Do not send cash unless you register the letter.

Terms. Deliveries and shipments will be cash on delivery or cash before shipment unless special arrangements for credit have been made in advance. For orders to be shipped C. O. D., remit 25% of amount of order before shipment.

How to Ship. Parcel post is best for small orders and express is best and cheapest for large orders. If not certain, leave shipping instructions blank and we will ship the best way.

Packing and Transportation. All goods are carefully packed and should reach you in good condition. Customer pays transportation charges. Express will be shipped C. O. D. for express charges. If wanted by parcel post be sure to send enough money to pay the postage. If postage is not included, goods will be sent C. O. D. for postage. Extra postage will be returned.

References. We refer you to the Olney National Bank, Hartford, Mich., any business house in Hartford, the American Association of Nurserymen, c/o Chas. Sizemore, Louisiana, Mo.

Complaints. If your stock arrives in a dried out or damaged condition, due to rough handling, or delay in transportation, do not accept it until you have a signed statement from your Express agent or Postmaster. This statement must be sent to us within 5 days after the arrival of the goods. Upon receipt of same we will, at our option, replace the stock free of charge or refund your money.

State Certificate of Inspection accompanies every order.

Our Guarantee of Satisfaction

We guarantee every tree, shrub, vine or plant we sell to be true to name, free from disease, fully up to grade listed in catalog, carefully packed and to reach you in good growing condition. If you are not satisfied with your trees or plants we will refund your money, providing the trees or plants are returned properly packed the same day as received. It is to be mutually agreed that in any event we are not liable for more than the purchase price. You couldn't ask for anything fairer than this.

No Order Accepted for Less Than One Dollar.

Free Plant Offer—See Order Blank

Roses

Everblooming or Hybrid Tea Roses

Our Roses are all Northern field-grown plants budded on Multiflora Japonica root stocks. All plants listed are the No. 1 grade which is the best grade that money can buy. We guarantee these Roses to **satisfy you**. See page 2.

Duchess of Wellington. Large pointed golden yellow buds. Fragrant.

Gruss an Teplitz. Clusters of dark crimson flowers changing to velvety fiery red. Continuous bloomer.

Kaiserin Auguste Viktoria. Very fine, vigorous, creamy white.

Lady Hillingdon. Fragrant, cuplike flowers of saffron-yellow.

Mme. Butterfly. Fragrant flowers ranging from brilliant pink to gold.

Mrs. Aaron Ward. Golden buff buds opening to double flowers of gold and pink, fragrant.

Ophelia. A vigorous, hardy, free blooming Rose. Light yellow shading to pink.

Radiance, Pink. A large pink; popular variety. Vigorous.

Radiance, Red. Large, round flowers of deep red. Strong grower.

PRICE: Above Roses, all 2-yr., No. 1. The best grade, 50c each; any 3 plants, \$1.40; any 5 or more plants, 45c each.

Our "1933 SPECIAL" Rose Collection. One each of the above Roses. Nine big, strong, 2-year, No. 1, best grade plants. Nine of the hardiest, most vigorous free blooming varieties of all the Hybrid Tea Roses, all for \$3.50.

Betty Uprichard. Copper-red buds open to light salmon centers. Petals orange-carmine on outer surface.

Etoile de Hollande. Blooms brilliant red, magnificent size and perfect form.

Lady Margaret Stewart. Large blooms of perfect form, golden yellow shaded and streaked with orange-red.

Talisman. Buds brilliant red and gold. Flowers well shaped, scarlet-orange to yellow. Constant bloomer.

PRICE: Above 4 varieties, 2-yr., No. 1 plants, only 75c each. Any 3 plants, \$1.95; any 5 or more plants, 60c each.

Rose Collection

RAINBOW ROSE COLLECTION. One big No. 1 grade bush of each of the 13 above varieties, all labeled. **Thirteen of our best plants for only \$5.50.** Order several of these collections.



Mrs. Aaron Ward.



Betty Uprichard.

Take Advantage of Our Bargain Collections



Frau Karl Druschki.



Paul Neyron.



J. B. Clark.

Hybrid Perpetual or June Roses

These Roses are more robust and grow larger than the Hybrid Teas. Their floral display is unsurpassed in June and many bloom occasionally through the summer and fall. Very fine in the colder sections and for backgrounds for Hybrid Teas.

Frau Karl Druschki. Very large, pure white flowers on good stems.

George Arends. Like Druschki but a pure, even pink.

J. B. Clark. Vigorous grower, very dark scarlet.

Paul Neyron. Immense pink blossoms on strong stems.

PRICE: Hybrid Perpetuals, strong, 2 and 3-yr.-old plants, No. 1 grade, 50c each; any 3 plants, \$1.40; any 5 or more plants, 45c each.

Climbing Roses

American Pillar. Late June. Flowers pink with white center, in immense clusters. 35c each; 3 or more, 30c each.

Climbing American Beauty. Large sweet-scented, crimson flowers; fine for cutting

Dorothy Perkins. Very double, clear shell-pink flowers. Late. Each, 35c; 3 or more, 30c each.

Excelsa. Clear scarlet-carmine. Red Dorothy Perkins. Each, 35c; 3 or more, 30c each.

Gardenia. Bright yellow buds open to creamy white flowers.

Mary Wallace. Exquisite large, bright pink flowers. Early.

Paul's Scarlet. Large clusters of the most vivid scarlet flowers. Good for cutting.

Silver Moon. Large semi-double creamy white with golden anthers.

Dr. W. Van Fleet. Graceful buds open to pure apple-blossom pink. Very large flowers on long stems. Fragrant.

Tausendschon (Thousand Beauties). Cup-shaped double blossoms of soft pink. 35c each; 3 or more, 30c each.

PRICE: Climbing Roses, 2-yr., No. 1 plants, unless otherwise stated, 45c each; 3 or more, 40c each.

ROSES FOR YOUR FENCE OR TRELLIS. Any six climbing Roses for only \$1.90. These are the regular, heavy, No. 1 grade.



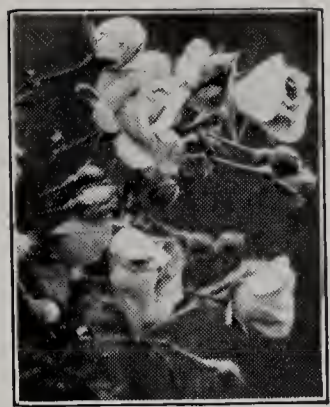
Dorothy Perkins.



Tausendschon.



Excelsa.



Dr. W. Van Fleet.

Hardy Polyantha or Baby Rambler Type Roses

CONTINUOUS BLOOMING

These Roses are best suited to planting in beds for their mass of bloom.

Ideal. Lustrous bright red blooms borne in large clusters all summer.

Gruss an Aachen. The flowers, as large as Hybrid Teas, are flesh-pink with deep center fading light. An exquisite Rose for bedding or border.

PRICE: 2-yr., No. 1 plants, 50c each; any 3 plants, \$1.40; any 5 or more plants, 45c each.

Rugosa Roses

The hardy attractive shrub Roses. Very valuable for landscape work. Beautiful flowers and dark green, leathery leaves. Resistant to insects and disease.

Conrad F. Meyer. Probably the best double pink. Free bloomer.

F. J. Grootendorst. One of the most useful Rugosas. Flowers are of a Baby Rambler type in large clusters of bright red. Practically everblooming. Grows well in partial shade.

Hansa. Large clusters, double red flowers.

New Century. Fully double pale pink flowers.

Sir Thomas Lipton. Double white, profuse bloomer.

Rugosa, Rubra. Single flowers, deep red to pink.

PRICES: Rugosa Roses, strong, 2 and 3-year plants, No. 1 grade, 50c each; any 3 plants, \$1.40; any 5 or more plants, 45c each.

Agnes. Fine new yellow Rugosa. Free flowering; double; sweetly fragrant, golden amber. Medium grower. **Very choice,** No. 1 plants, 75c each; 3 or more, 70c each.

Hugonis. The Golden Rose of China. Single yellow flowers in early spring. Dark green, compound leaves. Attractive as a shrub or specimen. 2-yr., No. 1, 50c each; 3 or more, 45c each.



Conrad F. Meyer.



F. J. Grootendorst.

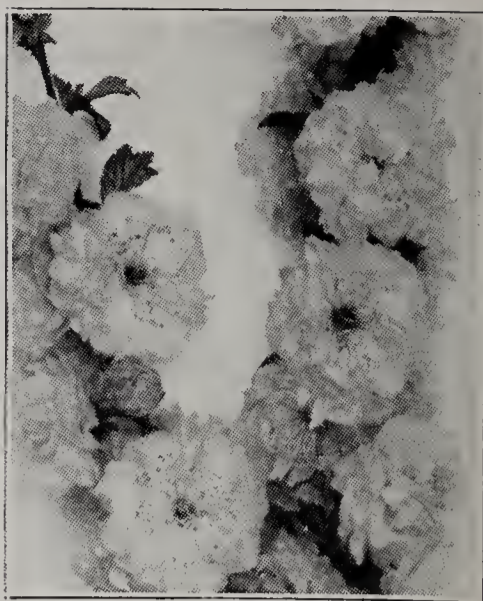


Hugonis.

Your Friends Will Want This Catalog—See Order Blank



Althea.



Almond.

Ornamental Shrubs

You will find here a most complete collection of shrubs in both the common varieties as well as many new and rare kinds. We believe this list will merit your careful consideration and call your attention to the unusually low prices for the high grade shrubs we sell. **Our shrubs are guaranteed to satisfy.** See page 2.

ALMOND, Double Flowering, Pink (*Prunus glandulosa*). A small branching shrub literally covered with showy, very double, pink flowers in spring. 2-3 ft., 65c each; 3 or more, 60c each.

ALTHEA, Rose of Sharon (*Hibiscus syriacus*). An upright shrub 10-12 feet tall. Large, showy flowers in fall. We offer Double Pink, Double Purple and Rubra, single red. Order by color. 2-3 ft., 35c each; 3 or more, 30c each.

ARALIA, spinosa (*Hercules Club*). A tall shrub with very large, tropical looking, compound leaves. Large panicles of creamy white flowers in August. 2-3 ft., 65c each; 3 or more, 60c each.

BARBERRY, Japanese (*Berberis Thunbergi*). A dense, graceful shrub, growing 3 to 5 feet high. Small, oval, bright green leaves and small, yellow flowers in spring. One of the best shrubs for foregrounds and also indispensable for hedges. The numerous, bright red berries are cherished by the birds all winter. 2-3 ft., 35c each; 3 or more, 30c each. 18 to 24 in., 25c each; 3 or more, 20c each.

BARBERRY, Japanese, Red Leaved (*B. Thunbergi atropurpurea*). This shrub is similar to Japanese Barberry, except that the leaves are a rich, dark red color. Planted in full sunlight this is one of the best shrubs to add color to the landscape. Excellent in groups or as specimens or hedges. Ours are field-grown plants from cuttings. This method produces strong, vigorous plants with perfect color and should not be confused with cheap seedling plants that often run poor in color. 18-24 in., 65c each; 3 or more, 60c each. 12-18 in., 40c each; 3 or more, 35c each.



A Japanese Barberry Hedge.

Free Plant Offer—See Order Blank



Butterfly Bush.



Beauty Bush.

BUTTERFLY BUSH (*Buddleia Farquhari*). An attractive free flowering shrub, 4 to 5 feet high, producing panicles of showy, lilac-colored flowers 4 to 6 inches long, from July till late autumn. Valuable for its floral display late in summer. 2-yr., No. 1, 40c each; 3 or more, 35c each.

BEAUTY BUSH (*Kolkwitzia amabilis*). A very ornamental shrub growing to 7 feet high. Pink, Weigela-like flowers with orange veins in the throat, completely cover the bush in June. Leaves medium size, a pleasing green color with velvety surface. This new shrub from the mountains of China, promises to become one of the very popular landscape shrubs. Our plants, grown from cuttings, are vigorous and absolutely true. 2-3 ft., 70c each; 3 or more, 65c each. 18-24 in., 55c each; 3 or more, 50c each.

COTONEASTER, Pekin (*Cotoneaster acutifolia*). An upright spreading shrub with slender branches. Small, whitish pink flowers in June followed by black ovoid fruits. Grows 5 to 6 feet high in full sun. 2-3 ft., 40c each; 3 or more, 35c each.

— **Rock.** See Broad-Leaved Evergreens and Shrubs, page 17.

— **Spreading.** See Broad-Leaved Evergreens and Shrubs, page 17.

CURRENT, Golden (*Ribes aureum*). A valuable low border shrub. Fragrant yellow flowers early in the spring. 2-3 ft., 45c each; 3 or more, 40c each.

DEUTZIA, Lemoine. We have found this variety the most satisfactory of the Deutzias for landscape planting. It is a hardy free flowering bush, 2 to 3 feet high. The pure white flowers are numerous and tightly clustered, presenting a very striking flower display. 18-24 in., 40c each; 3 or more, 35c each.

— **Pride of Rochester** (*Deutzia scabra* var.). Very free blooming, flowers double, white tinged with rose on outside. Grows to 3 to 4 feet. 18-24 in., 30c each; 3 or more, 25c each.

DOGWOOD, Variegated (*Cornus elegantissima*). A new variety with dark green leaves margined with silver and red. Dark red branches. 2-3 ft., 80c each; 3 or more, 75c each.

— **Red Osier** (*Cornus stolonifera*). A red-branched shrub growing to 5 or 6 feet. Showy creamy white flowers in dense, flat-topped clusters followed by white berries. 2-3 feet, 30c each; 3 or more, 25c each.

— **Flowering, White and Pink.** See Ornamental Flowering Trees, page 18.

Our Landscape Department is Anxious to Help You



Elder.



Golden Bell.

ELDER, American Cut-Leaved (*Sambucus canadensis acutiloba*). A strong growing shrub with deeply cut fern-like foliage. Large, flat-topped clusters of white flowers followed by black fruits. Grows 8-10 ft. high and is a very showy background shrub. **SPECIAL:** 3-4 ft., 30c each; 3 or more, 25c each.

ELDER, European Golden (*Sambucus nigra aurea*). A large, fast growing shrub with golden yellow leaves. Plant this shrub in groups to add color to your landscape. 18-24 in., 40c each; 3 or more, 35c each.

EUONYMUS, Winged (*Euonymus alatus*). Grows 6 to 8 feet tall, with corklike wings on the branches that cause them to appear square. Leaves turn red in fall. Small, orange-red berries all winter. Unusually good specimen plant. 12-15 in., 45c each; 3 or more, 40c each.

— **Radicans**. See Broad-Leaved Evergreens and Shrubs, page 17.

GOLDEN BELL (*Forsythia intermedia spectabilis*). A superior variety of Border Forsythia. Foliage is darker green and flowers are much deeper yellow. 18-24 in., 30c each; 3 or more, 25c each.

HONEYSUCKLE, White Bell (*Lonicera bella albida*). An upright growing bush Honeysuckle. Fragrant, white flowers in May, followed by red berries in July. 2 to 3 feet.

— **Creamy Bell** (*L. bella chrysantha*). Creamy flowers; good for dry weather. 2 to 3 feet.

— **Broad Blueleaf** (*L. Korolkowi floribunda*). A new and very attractive variety. Long, slender arching branches thickly set with bluish green leaves. The great masses of delicate pink flowers are very beautiful, creating a mistlike effect. 2-3 ft., 75c each; 3 or more, 65c each.

— **Winter** (*L. fragrantissima*). Fragrant flowers. Leaves roundish, dark green and remain nearly all winter. 18-24 inches.



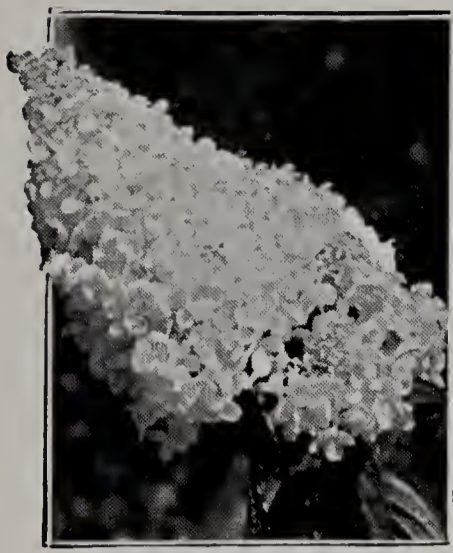
Tartarian Honeysuckle.

— **Morrow** (*L. Morrowi*). A wide spreading shrub, 4 to 6 feet high. White flowers changing to yellow followed by bright red berries in June. 2 to 3 feet.

— **Rosy Tartarian** (*L. tatarica rosea*). A large, upright shrub, 8 to 10 feet high. Many pink flowers in May followed by red and orange berries in summer. 2 to 3 feet.

PRICES OF HONEYSUCKLES:

Any except Blue Leaf, 45c each; 3 or more, 40c each.



Hydrangea P. G.

HYDRANGEA, Snowhill (*Hydrangea arborescens grandiflora*). A large-leaved shrub growing 3 to 5 feet high. Large, globular, pure white flower heads early in the summer. Very attractive. 18-24 in., 40c each; 3 or more, 35c each.

— **Pee Gee** (*H. paniculata grandiflora*). One of the showiest shrubs in cultivation. Immense panicles of white flowers that change to bronze and pink, borne in August and September. 18-24 in., 40c each; 3 or more, 35c each.

JETBEAD (*Rhodotypos kerrioides*). A distinct shrub with bright, light green, deeply serrated foliage and white flowers in spring. Black berries borne in clusters of four, remain all winter. Unusual, attractive and one of the best shrubs for shady places. 18-24 in., 45c each; 3 or more, 40c each.

KERRIA (*Kerria japonica*). A slender stemmed, fine textured shrub with sharply toothed bright green leaves. Numerous bright yellow single flowers in spring. 12-18 in., 50c each; 3 or more, 45c each.

— **Double** (*Kerria jap. flore pleno*). More upright growing than the single variety. Bark and leaves bright green, flowers very double, forming little round orange-yellow balls. Blooms continuously and does very well in shade. 18-24 in., 80c each; 3 or more, 75c each.

LILAC, Chinese (*Syringa chinensis*). A round, open-headed shrub, 7 to 10 feet high. Lilac-like flowers produced freely, of reddish purple color. 2-3 ft., 50c each; 3 or more, 45c each.

LILAC, NAMED VARIETIES—

— **Gloire de Moulin**. Single, pale lavender with a decided pink tint.

— **Ludwig Spaeth**. Single, very deep maroon-red. Free bloomer.

— **Madame Lemoine**. Large, pure double white flowers. Good bloomer.

— **Emile Lemoine**. Double, pink. Most nearly pure pink Lilac.

PRICES:

2-3 ft., 65c each; any 3, 2-3 ft. plants, 60c each. 18-24 in., 55c each; any 3, 18-24 in. plants, 50c each.

NOTE.—Order Lilacs early. They start to grow early.

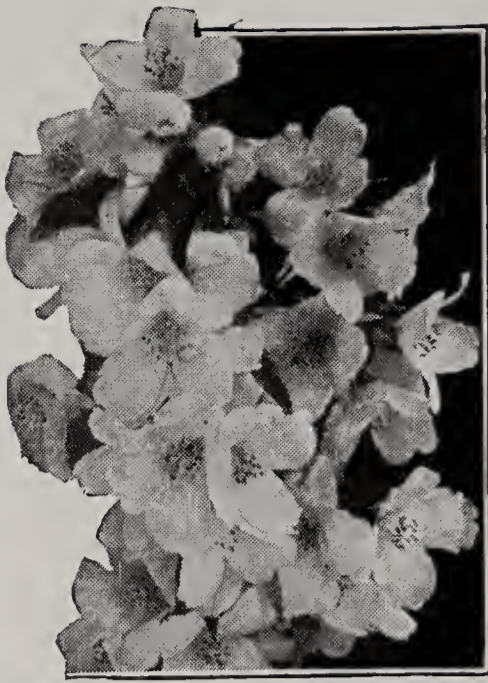


Lilac, Madame Lemoine.

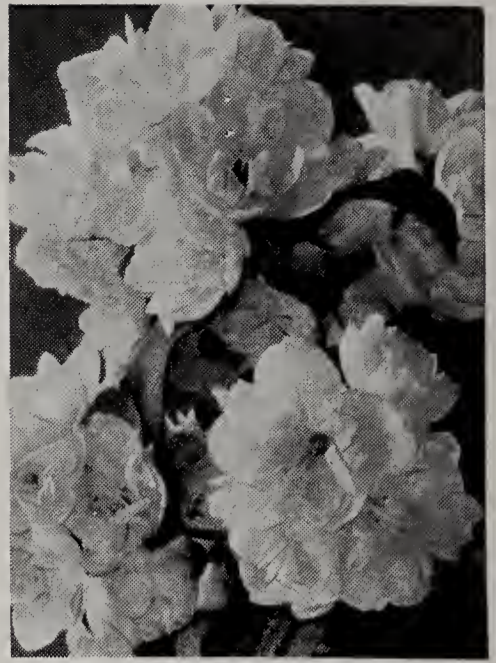


Jetbead.

Free Plant Offer—See Order Blank



Philadelphus Coronarius.



Philadelphus, Virginal.

MOCK ORANGE (Philadelphus).

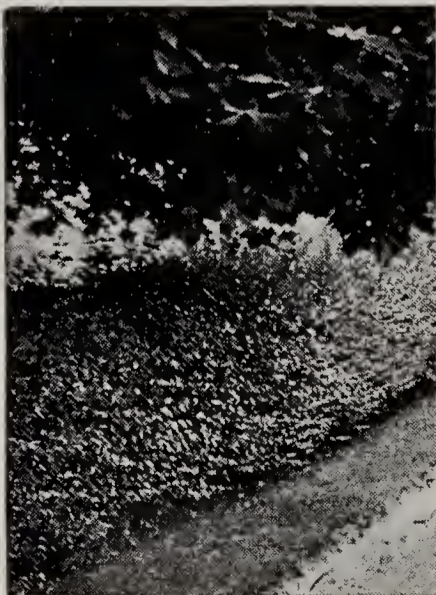
- **Bouquet Blanc.** A dwarf free flowering variety. 18 to 24 inches.
- **Sweet (P. coronarius).** This is the common Syringa. Fragrant, free flowering. 2 to 3 feet.
- **Lemoine (P. Lemoinei).** A slender-branched shrub covered with small, fragrant, white flowers in June and July. Grows 4 to 5 feet high. 18-24 inches.
- **Virginal (P. virginalis).** A new and magnificent shrub, growing 6 to 10 feet high. Very large, semi-double, waxy white, fragrant flowers nearly all summer. A really choice shrub that you should plant. 18-24 inches.

PRICES:

Mock Orange, 45c each; 3 or more, 40c each.

PRIVET (Ligustrum).

- **Amur.** The most popular hardy hedge shrub. Bright green leaves; stands trimming well. 18-24 inches, 15c each; 100 for \$10.00. 12-18 in., 10c each; 100 for \$6.00.
- **California.** Darker leaves than Amur but not so hardy. 2-3 ft., 20c each; 100 for \$15.00. 12-18 in., 10c each; 100 for \$6.00.
- **Ibota.** An excellent shrub with numerous white blossoms followed by black berries. Good as shrub or for hedge. 3-4 ft., 35c each; 10 for \$3.00. 12-18 in., 15c each; 100 for \$10.00.
- **Regel.** Lower, denser with spreading branches and large clusters of black berries all winter. A very good shrub for garden and shade. 18-24 in., 35c each; 3 or more, 30c each. 12-18 in., 25c each; 3 or more, 20c each; 100 for \$18.00.



Amur Privet.



Flowering Quince.

Our Landscape Department is Anxious to Help You



Smoke Tree.



Coralberry.

QUINCE, Flowering (*Cydonia Japonica*). A dense, spiny shrub that bears large, scarlet flowers in April. Very showy. 18-24 in., 40c each; 3 or more, 35c each.

RUSSIAN OLIVE (*Elaeagnus angustifolia*). Very tall, handsome shrub with silvery leaves. Very fragrant, yellow flowers followed by silvery olive-like fruits. Grows as a tall shrub or small tree. **SPECIAL PRICE:** 3-4 ft., 45c each; 3 or more, 40c each.

SIBERIAN PEA TREE (*Caragana arborescens*). A tall shrub with compound light green leaflets. Abundance of yellow flowers in spring or early summer. 2-3 ft., 40c each; 3 or more, 35c each.

SMOKE TREE (*Rhus cotinus*). An interesting and distinctive flowering shrub. Large round leaves; countless loose fluffy panicles form the bloom in early summer. Very attractive. 18-24 in., 65c each; 3 or more, 60c each.

SNOWBERRY, Red (Coralberry; Indian Currant). (*Symphoricarpos vulgaris*). An arching shrub, 3 to 5 feet high. Small, ovate, bright green leaves with long clusters of coral-colored berries persisting all winter. 2-3 ft., 35c each; 3 or more, 30c each. 18-24 in., 30c each; 3 or more, 25c each.

— **White** (*Symphoricarpos racemosus*). A graceful shrub, 2 to 5 feet high. Small leaves and pinkish flowers in summer. Great clusters of large, white berries; good in shade. 2-3 ft., 35c each; 3 or more, 30c each. 18-24 in., 30c each; 3 or more, 25c each.



Spirea Anthony Waterer.



Spirea Thunbergi.



Spirea Billiardi.

SPIREA Anthony Waterer. A low growing, upright variety producing bright pink clusters of flowers throughout the summer. 18 to 24 inches.

— **Billiard** (*S. Billiardi*). A hardy shrub of medium height, producing long, dense panicles of pink flowers in summer. 18 to 24 inches.

— **Froebel's** (*S. Froebeli*). Dense, dwarf shrub, growing to 3 feet. Bright pink, flat-topped clusters of flowers cover the bush in July. Very ornamental and useful. 18 to 24-inch clumps.

— **Garland** (*S. arguta*). One of the finest early blooming Spireas. A snowy mass of clear white flowers early in May. Grows 3 to 5 feet high. 2 to 3 feet.

— **Japanese White** (*S. callosa alba*). A dwarf variety from Japan. Dark green leaves; white flat-topped clusters of flowers. 12 to 18 inches.

— **Thunberg** (*S. Thunbergi*). A low growing shrub with fine feathery foliage. The earliest Spirea to bloom. Pure white flowers. 2 to 3 feet.

PRICES:

Above Spireas, 45c each; 3 or more, 40c each.

— **Van Houtte** (*S. Van Houttei*). The most common Spirea. Flowers white in numerous dense-flowered umbels in late spring. Grows to 7 feet. 2-3 ft., 35c each; 3 or more, 30c each. 18-24 in., 25c each; 3 or more, 20c each.

ST. JOHN'S WORT, Shrubby (*Hypericum prolificum*).

A hardy shrub growing to 3 feet high. Attractive blue-green foliage with showy golden yellow flowers nearly 2 inches across. Flowers from August till frost. The best shade shrub for late bloom. 18-24 in., 80c each; 3 or more, 75c each.

SUMAC, Shredded (*Rhus typhina laciniata*). A tall shrub with deeply cut fernlike leaves that turn scarlet in fall. Large clusters of bright red berries all winter. 18-24 in., 40c each; 3 or more, 35c each.

TAMARIX, African (*Tamarix africana*). A tall, fine-textured shrub bearing delicate, small, rosy purple flowers in early spring. 2-3 ft., 40c each; 3 or more, 35c each.

— **Indian** (*Tamarix gallica indica*). Similar to above except that the delicate pink flowers are borne in August and September. 2 to 3 ft., 40c each; 3 or more, 35c each.



Tamarix.

Special Low Price on Blakemore Strawberries



Viburnum, Fragrant.

VIBURNUM, American Cranberry Bush (*Viburnum americanum*). An open spreading shrub, 6 feet tall. Fruits are lustrous bright red and remain all winter. 18-24 in., 45c each; 3 or more, 40c each.

— **Fragrant** (*Viburnum Carlesi*). This rare shrub from Korea is an unusually well-shaped plant. The Snowball-shaped flowers open to a delicate pink, gradually fading to waxy white, are deliciously fragrant and open very early in the spring. This plant, above all others, should be in every garden. 18-24 in., balled and burlapped, \$1.75 each.

— **Japanese Snowball** (*Viburnum plicatum*). This handsome shrub produces globular clusters of pure white flowers even larger than the common Snowball. Very desirable but should be protected from the piercing winds in colder sections. 18-24 in., 65c each; 3 or more, 60c each.

— **Wayfaring Tree** (*Viburnum lantana*). A large shrub, 12 to 15 feet high. Many clusters of white flowers very early in the spring. Fruits are bright red changing to black. Leaves, stems and buds are very downy, giving the shrub an unusual appearance. 18-24 in., 45c each; 3 or more, 40c each.

WEIGELA, Eva Rathke. A splendid free flowering Weigela. Flowers distinct dark red produced quite continuously. Grows to 5 feet high. 2-3 ft., 60c each; 3 or more, 55c each.

— **Pink** (*W. rosea*). One of the finest. Grows about 6 feet tall. Large rosy pink flowers produced in great profusion. 2-3 ft., 45c each; 3 or more, 40c each.

— **Dwarf Variegated** (*Weigela nana variegata*). A dwarf form, 2 to 4 feet high. Leaves variegated with white. Flowers white, slightly suffused with pink in May. A really choice shrub. 2-3 ft., 55c each; 3 or more, 50c each.



Weigela, Pink.

Our Landscape Department is under the direction of an expert landscape gardener. We have planned and planted many fine homes to the entire satisfaction of their owners. If you have any questions regarding the planting of shrubs, trees or flowers around your home we will be glad to assist you in the proper selection of varieties. This service is free, please write us.



Silver Lace Vine.

Climbing Vines

The need of vines for home improvement is well known and there is absolutely nothing that adds more to the beauty of the home than appropriate vines. A porch without a vine is desolate and incomplete. Vines are exceptionally valuable for turning unsightly fences and buildings into things of beauty.

Boston Ivy. A very good vine. Clings to stone, brick or cement. Blue berries, red leaves in fall. 2 yr., No. 1, 80c each.

Engelmann Creeper. Similar to 5-leaved Ivy, except that the foliage has a finer texture. 2 yr., No. 1, 40c each.

American Bittersweet. A high climber producing interesting fruit capsules of orange and yellow. Fine for winter bouquets. 3-yr. plants, 50c each; 3 or more, 45c each.

Clematis, Sweet Autumn. A splendid vine for the trellis. Fragrant flowers profusely borne in summer and autumn. 2 yr., No. 1, 55c each; 3 or more, 50c each.

Clematis, Jackmani. A graceful free flowering vine. Flowers large, dark velvety purple. Very choice. 2 yr., No. 1, 90c each; 3 or more, 80c each.

Silver Lace or China Fleece Vine. This fine new vine will grow as much as 25 feet the first season. Silvery white foamy sprays of flowers from late summer till freezing. 2 yr., No. 1, 65c each; 3 or more, 60c each.

Euonymus Radicans. Evergreen. For description, see Broad-Leaved Evergreens and Shrubs, page 17. 15-18 in., \$1.00 each; 3 or more, 85c each.

Wisteria, Purple. A tall rapid growing vine. Dense, drooping clusters of purplish, pea-shaped flowers in spring. 2 yr., No. 1, grafted, \$1.00 each; 3 or more, 80c each.



Bittersweet.



Clematis.

Evergreens

Evergreens are, without doubt, one of the most desirable forms of trees for landscape planting. Their rich, dark green color adds warmth and cheer to the landscape every day in the year. Evergreens are an investment that increases in value every year. Our evergreens have all been transplanted two or more times and are specimen plants.

B&B means balled and burlapped, or that the plants are dug with a ball of earth which is securely tied in burlap. This assures safe transplanting.

All plants below B&B.

ARBOR-VITAE, American. A bushy, tapering tree, useful for hedge and group planting. Can be trimmed to any height or shape. 18-24 in., \$1.00 each; 2½-3 ft., \$1.70 each.

— **Douglas Golden.** A broad, bushy pyramidal tree. Bright golden foliage in the spring. 2½-3 ft., \$3.75 each.

— **Globe.** A dwarf evergreen growing to a round, ball-shaped head. 10-12 in., \$1.00 each.

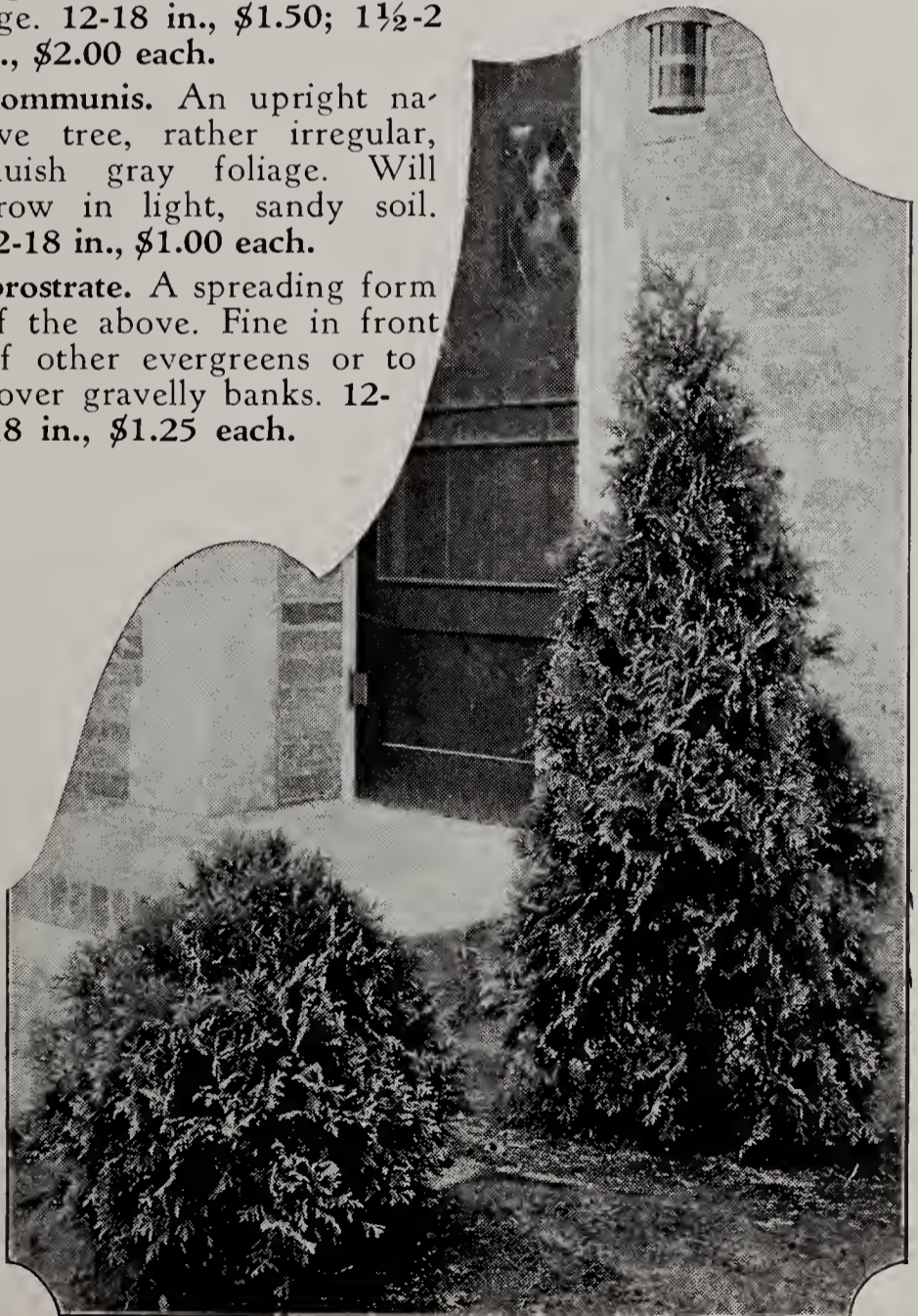
— **Pyramidal.** A bright green, narrow tree that grows to 20 feet but can be kept trimmed to any height desired. 18-24 in., \$1.50; 2-2½ ft., \$1.90; 2½-3 ft., \$2.50 each.

JUNIPER, Andorra. A new, beautiful, low spreading tree, growing to 18 inches; turns rich purple-bronze in winter. 10-12 in., \$1.75 each.

— **Pfitzer.** One of the most important evergreens in landscape work. Hardy, irregular, spreading blue-green foliage. 12-18 in., \$1.50; 1½-2 ft., \$2.00 each.

— **communis.** An upright native tree, rather irregular, bluish gray foliage. Will grow in light, sandy soil. 12-18 in., \$1.00 each.

— **prostrate.** A spreading form of the above. Fine in front of other evergreens or to cover gravelly banks. 12-18 in., \$1.25 each.



Globe Arbor-Vitae.

Pyramidal Arbor-Vitae.



Irish Juniper.

JUNIPER, Irish. A fine, upright, narrow tree, 6 to 8 feet. Foliage silvery green. 1½-2 ft., \$1.80; 2-2½ ft., \$2.25 each.

— **Savin.** A low growing spreading type. Excellent around foundations of houses. 12-18 in., \$1.25 each.

— **Spiny Greek.** This tree, native to Greece, grows to a broad, conical shape, 4 to 5 feet high. Dense foliage of dark blue-green color. 15-18 in., \$2.50 each.

PINE, Austrian. One of the best upright growing Pines. Long needles, rich dark green. Fine for city planting. 18-24 in., \$1.50; 2-3 ft., \$2.10 each.

— **Mugho.** This is one of our most popular dwarf evergreens and is in a class by itself as there is no other evergreen like it. 10-12 in., \$1.25 each.

— **Scotch.** A tall, rapid growing tree with light green needles of medium length. 12-18 in., \$1.00; 1½-2 ft., \$1.50 each.

SPRUCE, Norway. This tall, rapid growing tree is one of the best known evergreens. Does well anywhere and can be trimmed for hedges. 12-18 in., 90c; 2-3 ft., \$1.50 each.

— **Colorado Blue.** The most popular of all our evergreens. Tall, symmetrical trees of rapid growth. Silvery blue foliage. Selected blue specimens. 12-15 in., \$2.00; 1½-2 ft., \$3.75 each.

Sturdy Baby Evergreens

We furnish these little trees for those who like to plant small trees and watch them grow into specimens.

American Arbor-Vitae. 10-12 in., 30c each; 2 for 55c.

Norway Spruce. 10-12 in., 30c each; 2 for 55c.

Mugho Pine. 6-8 in., 30c each; 2 for 55c.

Austrian Pine. 8-10 in., 30c each; 2 for 55c.

Scotch Pine. 10-12 in., 30c each; 2 for 55c.

Douglas Fir. 8-10 in., 30c each; 2 for 55c.

Colorado Blue Spruce. 6-8 in., 30c each; 2 for 55c.

SPECIAL OFFER:

4 Evergreens — your choice — for **\$1.00** only



Colorado Blue Spruce.



Mugho Pine.

Our Landscape Department is Anxious to Help You



Rock Cotoneaster.

Broad Leaved Evergreens and Shrubs

B&B—Balled and Burlapped.

Cotoneaster, Rock (*C. horizontalis*). A low trailing shrub with small, oval, dark green leaves. Pinkish flowers in June with red berries in August. An excellent rock garden plant. 18-24 in. spread, B&B, \$1.50 each.

Cotoneaster, Spreading (*C. divaricata*). A low growing symmetrical bush, with small waxy green leaves. Small, bright pink flowers followed by bright red berries in late summer. Very desirable as leaves remain well into winter. 2-3 ft., B&B, \$1.00 each; 3 or more, 90c each.

Garland Flower (*Daphne cneorum*). The round heads of bright pink flowers nestled among the dark green leaves are delightfully fragrant. Blooms in May and again in fall. 10-12 in., B&B., \$1.75 each.

Oregon Holly Grape (*Mahonia aquifolia*). This splendid evergreen shrub much resembles the true Holly. Fine as a ground cover under trees and evergreens. Bright yellow flowers followed by blue-black berries. 15-18 in., B&B., \$1.40 each.

Euonymus Radicans. The best evergreen vine for America. Foliage is dense and evergreen. Will climb stone, brick, cement or trees. Also good for ground cover and as a low hedge. 15-18 in., \$1.00 each; 3 or more, 85c each.



Daphne Cneorum.



Euonymus Radicans.

Shade, Ornamental and Flowering Trees

Now you can have the trees you have longed for. Drastic price cuts will save you money. Order several. Our big, strong trees will soon make beautiful specimens and furnish abundant shade.

ASH, Mountain. A small tree with compound green leaves. White flowers in flat-topped clusters. Bright red berries that remain all winter. 6-8 ft., \$1.40 each.

BIRCH, White or Canoe. This handsome white-barked tree is beautiful as a specimen or near the water's edge. 5-6 ft., \$1.50 each.

— **Cut-Leaved Weeping.** White bark with slender pendulous branches and deeply cut foliage. 8-10 ft., \$2.50 each.

BOX ELDER. A rapid growing well known tree. 6-8 ft., 75c each.

CATALPA, Bungei (Umbrella Catalpa). A grafted tree with round head. Good for formal effects. 4-5 ft., \$1.40 each.

CHERRY, Japanese Flowering. Very showy pink flowers in spring. These trees are famous for their beauty in Washington, D. C. 4-5 ft., \$2.50 each.

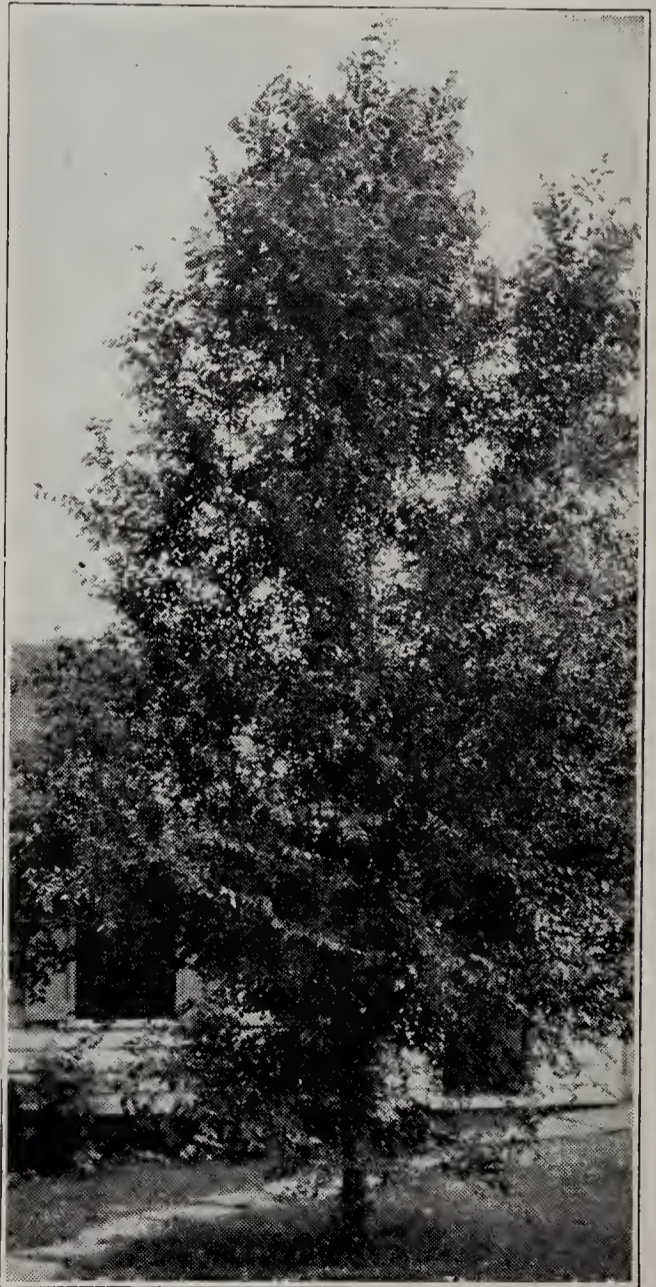
FLOWERING CRAB, Bechtel's. A small tree with large, very double, delicate pink flowers. Fragrant. 3-4 ft., 75c each.

DOGWOOD, Pink Flowering. A small tree with spreading branches covered with large, showy pink flowers early in spring. 2-3 ft., B&B, \$3.50 each.

— **White Flowering.** Same as above except that the flowers are white. 2-3 ft., B&B, \$1.50 each.

ELM, American. A tall, very graceful native tree. 5-6 ft., 55c each.

— **Chinese or Siberian.** This new and wonderful tree comes from Northern China and is perfectly hardy. It is the fastest growing tree we have seen. The leaves are elm-shaped but smaller and the branches are upright, with many branchlets, giving the tree a very desirable close textured effect. Ours are the true (Pumila) or North China strain that are perfectly hardy. 4-5 ft., 50c; 5-6 ft., \$1.00; 6-8 ft., \$1.75; 8-10 ft., \$2.40; 1 3/4-2 in. diameter, \$4.50 each.



Chinese Elm.

Take Advantage of Our Bargain Collections



Double Red Hawthorn.

HAWTHORN, Double Red. A small tree or large shrub. Large, bright scarlet, very double flowers. 4-5 ft., \$1.75 each.

JUDAS TREE, or American Redbud. Small, delicate rosy purple flowers clothe the leafless branches very early in the spring. 4-5 ft., B&B, \$1.75 each.

MAIDENHAIR TREE. A rare tree. Upright, compact, with bright green fan-shaped leaves. A very unusual specimen tree. 6-8 ft., \$4.00 each.

MAPLE, Norway. One of the very best Maples for street, lawn or park. 8-10 ft., \$3.00 each.

— **Schwedler.** The same as Norway but has brilliant reddish purple leaves in spring, fading to dark green in summer. 6-8 ft., \$3.30 each.

— **Silver.** A rapid growing tree. Leaves silvery underneath. 5-6 ft., 75c; 8-10 ft., \$1.25 each.

— **Sugar.** The most majestic of the Maples. Tall, spreading and symmetrical. 8-10 ft., \$3.00 each.

MULBERRY, Weeping. A grafted tree with drooping branches. 5-6 ft., 1-yr. heads, \$1.75 each.

PLUM, Flowering. A small tree with semi-double pink flowers thickly set on slender branches in early spring. 3-4 ft., 90c each.

— **Hansen's Purple-Leaved.** A dwarf variety that holds the dark purple color of the leaves all summer. Profuse bloomer. 3-4 ft., 95c each.

— **Newport Purple-Leaved.** A new variety with large, deep purple foliage. Rapid grower. 5-6 ft., \$1.25 each.

POPLAR, Lombardy. A tall, columnar tree, very useful for formal effects and screens. Very rapid grower. 6-8 ft., 60c each; 3 or more, 50c each; 8-10 ft., 75c each; 3 or more, 70c each; 2½-3 in. diam., \$3.00 each.

WILLOW, Pussy (French). Very large, silver catkins with the first breath of spring. When mature, catkins are covered with golden yellow anthers. Excellent for cutting. 3-4 ft., 50c each; 3 or more, 45c each.

— **Wisconsin Weeping.** A beautiful drooping tree. Valuable near water or to lend enchantment to the lawn. 6-8 ft., 90c each.

Your Friends Will Want This Catalog—See Order Blank



Achillea.



Anemone—Pasqueflower.



Columbine.

Choice Hardy Perennial and Rock Plants

These plants live through the winter and come up with renewed vigor in the spring. All our plants are grown in the field and are ready to bloom the first season they are set. All plants are 2 or 3 years old, unless specified.

- (*)—Good for cutting.
- (†)—Good for shade.
- (‡)—Good for rock garden.

ACHILLEA, The Pearl (*). Grows to 3 feet. Dense clusters of semi-double white flowers. July. 15c each; 3 for 40c; 6 or more, 10c each.

ALYSSUM saxatile, Dwarf Goldentuft. (‡). Gray-green leaves with dense heads of brilliant golden yellow flowers; very early. Fine with Arabis. Extra heavy plants. 20c each; 3 for 55c; 6 or more, 15c each.

ANCHUSA, Dropmore. Coarse leaves, intense blue flower. June and July. Grows 4 to 5 feet. 20c each; 3 for 55c; 6 or more, 15c each.

ANEMONE, European Pasqueflower. (‡). Open purplish flowers borne in profusion on 9-inch stems during April. An unusual rock garden plant for early bloom. 22c each; 3 for 60c; 6 or more, 18c each.

AQUILEGIA (Columbine). (* †). Long spurred. Mixed colors; an excellent, vigorous plant. Grows 2 to 3 feet. 20c each; 3 for 55c; 6 or more, 15c each.

ARABIS alpina grandiflora superba (Rock Cross). (‡). Large flowered white variety. 15c each; 3 for 40c; 6 or more, 10c each.

ARTEMISIA, Silver King. (*). This new variety can be cut and dried. 20c each; 3 for 55c; 6 or more, 15c each.



Alyssum.



Arabis.



Anchusa.

Take Advantage of Our Bargain Collections



Campanula.



Coreopsis.



Shasta Daisy.

CALMINTHA alpina (Calamint). (‡). Graceful rock plant, rich purple flowers. 6 inch. June. 1-yr. plants. 10c each; 3 for 25c; 6 or more, 7c each.

CAMPANULA (Canterbury Bells). (*). Long, bell-shaped flowers in white, pink and blue. June. Order by color. 15c each; 3 for 40c; 6 or more, 10c each.

— **carpatica** (Carpathian Bellflower). (‡). A fine rock plant growing in dense tufts which are covered with clear blue flowers borne on wiry stems. 20c each; 3 for 55c; 6 or more, 15c each.

CHRYSANTHEMUMS, Hardy Garden Varieties. (*).

— **Boston Bronze.** Bronzy orange flowers produced in great abundance.

— **Brune Poitevine.** Large flowers, deep velvety reddish bronze. Petals have a golden reverse. Early.

— **Glory of Seven Oaks.** The finest outdoor Chrysanthemum. Great masses of bright yellow flowers. Late August till frost. Medium height.

— **Indian Red.** Late. Pleasing coppery red.

— **Old Homestead.** Pink shaded light, bushy.

— **Gold Coin.** Bright yellow buttons. Late.

— **White Doty.** Tall, stiff stems. Large heads of pure white pompons.

PRICE OF CHRYSANTHEMUMS:

20c each; any 3 for 55c; any 6 or more, 15c each.

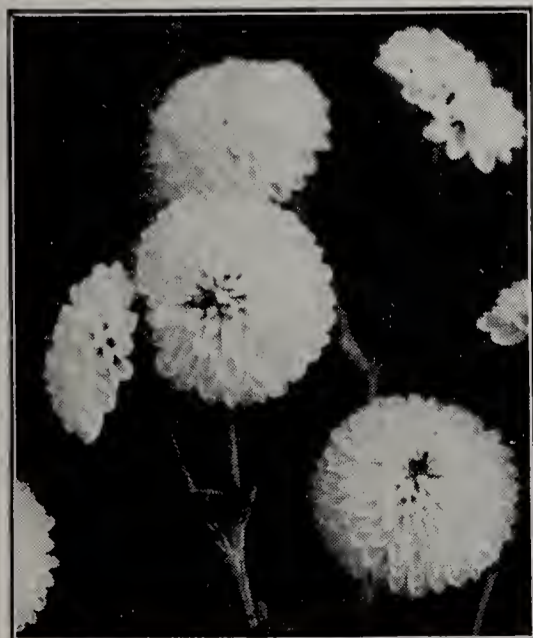
OUR FALL COLOR GROUP OF CHRYSANTHEMUMS.

Seven plants, one each of above varieties, only 90c.

CHRYSANTHEMUM, King Edward (Shasta Daisy). (*).

Very large, white flowers on stout stems; all summer. 15c each; 3 for 40c; 6 or more, 10c each.

COREOPSIS (Tickseed). (*). Bright yellow, daisy-like flowers on long stems all summer. 15c each; 3 for 40c; 6 or more, 10c each.



White Doty.



Boston Bronze.

Free Plant Offer—See Order Blank



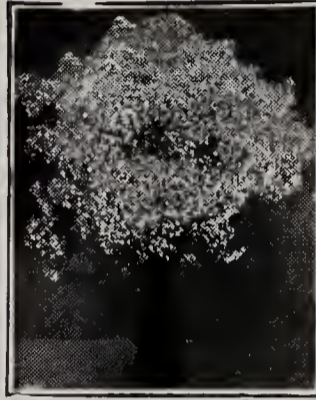
Delphinium.



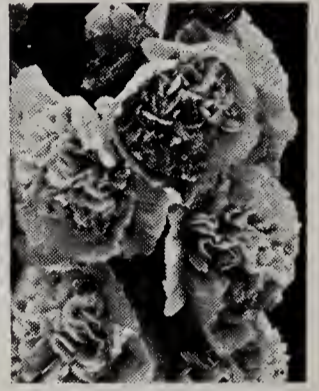
Sweet William.



Digitalis.



Gypsophila.



Double Hollyhock.

DELPHINIUM, Wrexham Strain. (*). A new giant-flowered strain. Colors blue, white and pink, some bicolor. Tall, large spikes. Frame grown plants. 20c each; 3 for 55c; 6 or more, 15c each.

— **Belladonna.** (*). Light blue, continuous bloomer. 1 yr., 15c each; 3 for 40c; 6 or more, 10c each.

— **Bellamosa.** (*). Dark blue continuous bloomer. 1 yr., 15c each; 3 for 40c; 6 or more, 10c each.

DIANTHUS barbatus (Sweet William). (*). Large, compact clusters of many colored flowers on 10 to 18-inch stems. Blooms over a very long period. 15c each; 3 for 40c; 6 or more, 10c each.

— **deltoides (Maiden Pink).** (‡). A trailing plant with rosy pink or white flowers from June to August. 15c each; 3 for 40c; 6 or more, 10c each.

— **plumarius.** (‡). Double mixed; a good rock plant. Pink, white and lavender flowers all summer. 15c each; 3 for 40c; 6 or more, 10c each.

DIGITALIS (Foxglove), Shirley Hybrids. These giant Foxgloves often produce 3-ft. flower stems. Colors mixed white, shell-pink to deep rose with many spots or markings. 20c each; 3 for 55c; 6 or more, 15c each.

GYPSOPHILA (Baby's Breath). (*). A graceful, airy plant with small, white flowers. Good for winter bouquets.

— **paniculata.** Single flowered. 15c each; 3 for 40c; 6 or more, 10c each.

— **Bristol Fairy.** (*). A much improved double-flowered type. 45c each; 3 for \$1.20.

HOLLYHOCK, Imperator. Very double, some fringed, shades of light yellow to deep salmon-pink. 20c each; 3 for 55c; 6 or more, 15c each.

LYCHNIS chalconica (Maltese Cross). (*). Head of vivid scarlet flowers blooming a long time. 20c each; 3 for 55c; 6 or more, 15c each.

MONARDA (Bergamot; Cambridge Scarlet). Ragged red flowers. Very aromatic foliage. 20c each; 3 for 55c; 6 or more, 15c each.

Our Landscape Department is Anxious to Help You

MYOSOTIS, Forget-me-not. (‡). A dainty low-growing plant producing great numbers of small, bright blue flowers with yellow center. 15c each; 3 for 40c; 6 or more, 10c each.

— **palustris** (Semperflorens). († ‡). A hardier type with larger flowers. Prefers moist soil and shade. 15c each; 3 for 40c; 6 or more, 10c each.

NEPETA Mussini (Ground Ivy). (‡). Compact, 8-inch, fine grey-green foliage. Bright lavender, flowers continuously. 20c each; 3 for 55c; 6 or more, 15c each.

PACHYSANDRA (Japanese Spurge). († ‡). A spreading ground cover plant, growing 4 to 6 inches high. Dark green, attractive foliage that is evergreen. Does well in shade under trees and at the base of walls. 20c each; 3 for 55c; 6 or more, 15c each.

PHLOX, Hardy.

— **Africa.** (*). Brilliant carmine-red with blood-red eye.

— **Fuerbrand.** (*). Cerise and vermilion flamed with orange.

— **Miss Lingard.** (*). June-October. Large heads, white with pink shading. Disease free.

— **Rijnstroom.** (*). Rose with white center.

— **Rheinlander.** (*). Beautiful salmon-pink.

— **Pink Lingard.** (*). Healthy and hardy as Miss Lingard. Color is a clear mauve-pink, lasting very long.

PRICES:

20c each; any 3 plants, 55c; any 6 or more plants, 15c each.

SPECIAL COLLECTION PHLOX. 12 plants of 6 different varieties. Our selection. Special, \$1.50.

PHLOX SPECIES, Subulata Rosea. (‡). Dwarf creeping. Rose-pink flowers, thrives in hot, dry location. 20c each; 3 for 55c; 6 or more, 15c each.

PHYSALIS (Chinese Lantern Plant). (*). An attractive plant, growing 1½ feet high. Produces bright red, balloon-like pods which resemble Chinese lanterns. Much used for winter bouquets. 15c each; 3 for 40c; 6 or more, 10c each.

PLATYCODON (Balloon Flower). (*). Large, showy deep blue, all summer. 20c each; 3 for 55c; 6 or more, 15c each.

POPPY, Oriental. Large, fiery red to orange. Blooms on 2 to 3-ft. stems. A wonderfully showy plant. 20c each; 3 for 55c; 6 or more, 15c each.



Oriental Poppy.

PYRETHRUM, Hybrids. (*). Wonderful daisy-like flowers in all shades of rose and pink. 1 to 2 feet tall in May and June. 20c each; 3 for 55c; 6 or more, 15c each.



Lychnis Chalcedonica.

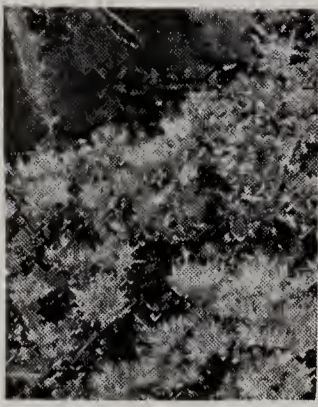


Pyrethrum.

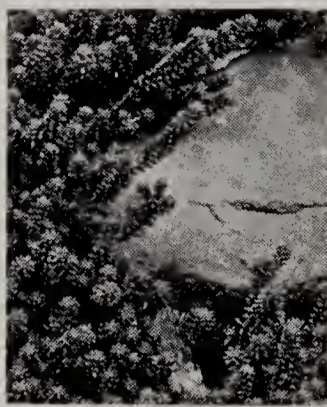


Rheinlander Phlox.

Baby Evergreens Will Soon Grow Into Specimens



Sedum Spurium.



Sedum Acre.



Viola.

SEDUM, Stonecrop.

- **acre** (Gold Moss). (‡). Dwarf, green foliage. Bright yellow flowers 3 inches high.
- **Aizoon**. Bright yellow flowers. 1 foot. July and August.
- **album**. (‡). Dwarf spreading, thick, round leaves. White flowers. July. 2 inches.
- **glaucum**. (‡). Excellent dwarf variety for rockeries and border edgings. Prostrate and of slow growth.
- **kamtschaticum**. (‡). Orange-yellow flowers. Foliage green, turning golden in autumn, prostrate.
- **lydium**. (‡). Blue-green foliage and of prostrate habit.
- **pruniatum Forsterianum**. (‡). Neat, glaucous bluish green leaves with golden flowers 3 inches high. 20c each; 3 for 55c; 6 or more, 15c each.
- **sarmentosum**. (‡). Excellent dwarf variety. Best Sedum for filling cracks between rocks in wall garden.
- **spurium coccineum**. (‡). Reddish leaves, dwarf spreading. Rosy crimson flowers 6 inches high. Rapid grower.
- **ternatum**. († ‡). The most satisfactory variety for growing in shade. Will spread rapidly under trees or anywhere it is difficult to get plants to grow.
- **spectabile**. Grows 18 inches high, broad, light green foliage. Large heads of showy rose-colored flowers in fall.
- **spectabile "Brilliant"**. Same as preceding except that flowers of bright amaranth red.

PRICES OF SEDUM:

All varieties except Pruniatum Forsterianum, 15c each; 3 for 40c; 6 or more, 10c each.

ROCK GARDEN COLLECTION OF SEDUMS. Twelve plants, 10 varieties, of our selection, labeled, only \$1.00.

TRITOMA (Red Hot Poker Plant; Torch Lily). (*). A very showy plant producing compact spikes of brilliant orange-red flowers. 20c each; 3 for 55c; 6 or more, 15c each.

VERONICA incana (Woolly Speedwell). (* † ‡). Grows about 12 inches high with amethyst-blue flowers on spikes in July and August. Foliage is light gray. Very good rock plant. 20c each; 3 for 55c; 6 or more, 15c each.

- **rupestris flexuosa**. (‡). Prostrate creeping plant. Pale blue flowers 1 inch high. April. Excellent rock plant. 20c each; 3 for 55c; 6 or more, 15c each.



Tritoma.



Veronica.

VIOLA, Jersey Gem. (‡). Dwarf, rich violet, free bloomer. One of the best. 20c each; 3 for 55c; 6 or more, 15c each.



W. H. Phipps.



German Iris.



Lord of June.

German Iris

S.—indicates Standards, F.—indicates Falls of flower.

- Ambassadeur.** S. smoky velvety purple; F. purple-maroon. A new variety and one of the best. 20c each; 3 for 45c.
- Lord of June.** S. light chicory blue; F. lavender-violet. Flowers exceedingly large and handsome. 25c each; 3 for 70c.
- Mother of Pearl.** Pale bluish lavender with faint creamy undertone. 20c each; 3 for 45c.
- Queen of May.** Pleasing rose color, early. 20c each; 3 for 45c.
- Rhein Nixe.** S. white; F. violet-blue. 20c each; 3 for 45c.
- Sherwin-Wright.** Bright golden yellow. 20c each; 3 for 45c.
- Monsignor.** S. violet; F. heavily veined purple. 20c each; 3 for 45c.
- Opera.** S. bright rich pansy-violet; F. rich velvety violet-purple. 45c each; 3 for \$1.25.
- Seminole.** Late, rich velvety bi-color, one of the reddest reds. 45c each; 3 for \$1.25.

SPECIAL IRIS COLLECTION. Three roots each of 7 different varieties, and your choice of 1 root of either Opera or Seminole. 22 roots for \$1.65, all labeled.

Gladiolus

- Crimson Glow.** A perfect, very large, deep scarlet-crimson.
- E. J. Shaylor.** Deep rose, ruffled.
- Flaming Sword.** Early, deep red.
- W. H. Phipps.** The most magnificent coral-pink Gladiolus ever produced. Tall, stately, many blossoms open at one time. A real value. Blooming size bulbs. 12c each; 3 for 30c; 6 for 55c; 12 for 85c, labeled.
- Mrs. Dr. Norton.** Pure soft white with tips of petals suffused with La France pink.
- 1910 Rose.** Deep rose-pink, early.
- Schwaben.** Sulphur-yellow.
- Souvenir.** Early pure yellow.
- Tycko Zang.** Very large, salmon-pink.
- Virginia.** Intense scarlet-red.

PRICES:

Unless stated, your choice, 6c each; 3 for 16c; 6 for 30c; 25 for \$1.00; 100 for \$3.50.

Exhibition Mixed. A choice mixture of the better varieties. Will please the most particular gardener. 6 for 30c; 12 for 50c; 25 for 90c; 100 for \$3.00.

Special Low Price on Blakemore Strawberries



Red Delicious.

Fruit Trees

Make Use of Our Knowledge.

For over twenty years we have specialized in the production of high quality fruit on our 150 acres of orchards. We have learned a great deal about growing fruit in this time and may be able to give you valuable advice about planting orchards or berry patches. When in doubt as to selection of varieties, write us and we will advise without obligation.

The Best True-to-Name Northern-Grown Stock at
Money-Saving Prices

Apples

- Fameuse** (Snow Apple). A very choice dessert Apple. White, tender flesh, highly flavored. October-January.
- Grimes Golden**. A good early bearing commercial variety. Medium size, golden yellow, splendid flavor. October-January.
- Jonathan**. Very good, early bearing commercial variety. Medium size, dark red, excellent quality. October-February.
- McIntosh**. A juicy, bright red Apple, similar to Snow Apple. Good commercial Apple; bears young. September-December.
- Oldenburg** (Duchess). An early, red striped cooking Apple of good quality. August-September.
- Red Astrachan**. A good Apple for early trade. Bright red, good flavor. July-September.
- Red Canada**. (Steele Red). A fine, deep red, medium-sized Apple for commercial or home orchards. November-March.
- Red Delicious**. Superior to Delicious as a commercial variety. Fine dessert Apple and a good keeper. October-March.
- Red Northern Spy**. A solid dark red Spy. A very good commercial Apple. November-March.
- Rhode Island Greening**. One of the best commercial Apples. Green skin, tender flesh, large, good seller. December-April.
- Stayman's Winesap**. A good sized red Apple with excellent keeping qualities. Tree vigorous; early bearer. December-April.
- Wealthy**. A good commercial variety in the northern states. An early and abundant bearer. Fine quality. October-January.

Free Plant Offer—See Order Blank

Yellow Transparent. The first good Apple of the season. Yellow, tender skinned, juicy. July-September.

Hyslop (Crab Apple). Large, dark red, spicy fruit. Tree vigorous and very productive. The best all around Crab Apple.

Diameter, 11/16" to 1"; height, 5 ft. up, 45c each; any 5 for 35c each; 100 for \$30.00.

Diameter, 9/16" to 11/16"; height, 4 ft. up, 35c each; any 5 for 30c each; 100 for \$25.00.

NOTE.—Canada Red trees, double grafted. 5c additional per tree.

Sweet Cherries

Sweet Cherries should be more extensively planted. They are rapid growers and require a minimum of care. The trees are ornamental and useful for shade as well as the luscious fruit.

Bing. A large, dark red, sweet Cherry of high quality. Productive.

Black Tartarian. A good medium early variety. Cherries nearly black. Tree a good and regular bearer.

Gov. Wood. The light red fruit is soft and of good quality. A productive early bearer.

May Duke. An old but popular Cherry prized for canning. Fruit large and dark red.

Napoleon. A very large, deep yellow Cherry, spotted and shaded with deep red.

Schmidt. One of the largest black Cherries and our best seller. An excellent commercial variety.

Windsor. Later than Schmidt. Dark red, firm and of good flavor.

NOTE.—To get the best results always plant two or three varieties of Sweet Cherries near each other. In this way the bees will distribute the pollen which will cause a much heavier set of fruit.

Diameter, 11/16" and up, large; height, 4 ft. up, 60c each; any 5 for 50c each; 100 for \$35.00.

Sour Cherries

Early Richmond. A good early Cherry that does well almost anywhere.

Montmorency. The best and most popular sour Cherry. Good dark color and excellent quality. The standard Cherry for home and commercial canning.

Diameter, 11/16" and up, 2 yr.; height, 4 ft. up, 45c each; any 5 for 35c each; 100 for \$30.00.

Diameter, 9/16" to 11/16", 1 yr.; height 3½ ft. up, 40c each; any 5 for 30c each; 100 for \$25.00.

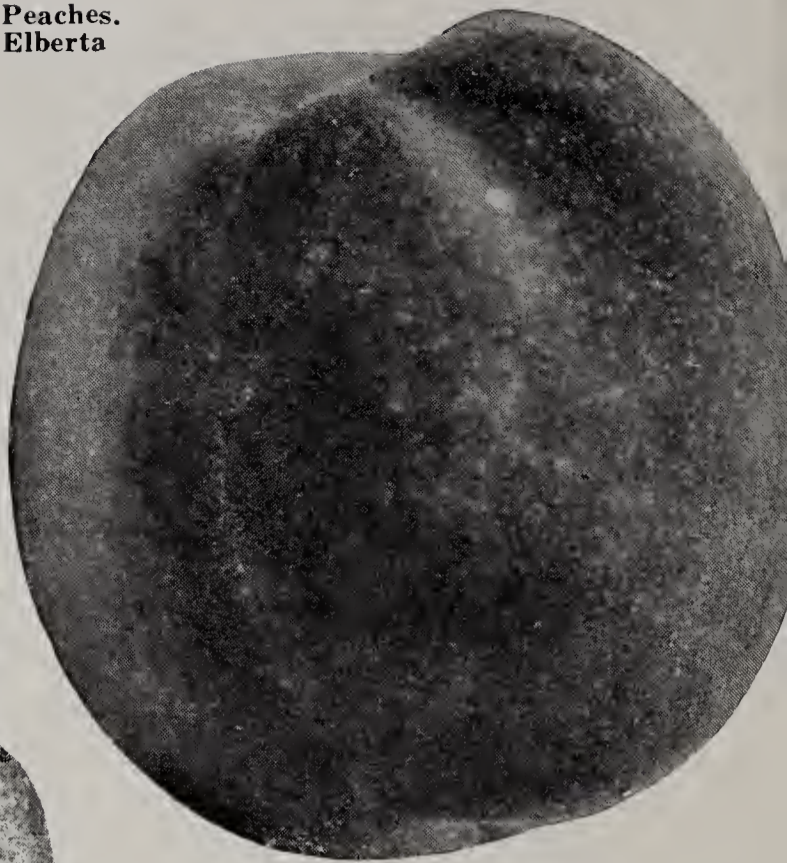
SPECIAL CHERRY ORCHARD OFFER. Your choice of the large size 11/16-inch trees. Five sweet, five sour, for \$3.50.



Montmorency Cherry.

Take Advantage of Our Bargain Collections

**Peaches.
Elberta**



Bartlett Pear.

Pears

Plant 18 to 20 feet apart. Best results are obtained by planting different varieties close to each other.

Bartlett. A leading commercial variety of high quality. Large, juicy, highly flavored fruit.

Beurre Bosc. Large yellow, much russeted, of best quality.

Clapp's Favorite. A large lemon-yellow Pear splashed with crimson. A first quality early market Pear.

Kieffer. The standard late market Pear. Tree vigorous and very productive. October-November.

Seckel. A small, highly flavored Pear, much prized for preserving. September-October.

Diameter, 11/16" and up; height, 5 ft. up; 45c each; any 5 for 40c each; 100 for \$35.00.

Diameter, 9/16" to 11/16"; height, 4 ft. up; 40c each; any 5 for 35c each; 100 for \$30.00.

Peaches

These strong northern grown trees will make an orchard that will put money in your pocket. Plant Peaches this spring. They bring returns at an early age.

Champion. Best white freestone Peach for canning or dessert. Very productive. August 15th to 20th.

Elberta. The most satisfactory commercial Peach. Large, yellow freestone fruit of good quality. Very productive. September 10th to 20th.

Gold Drop. Very good for Michigan conditions. Medium size, golden yellow; free; very sweet. September 25th to October 1st.

J. H. Hale. A very large yellow freestone Peach of excellent quality. Good shipper and keeper. September 5th to 10th. Should be planted between Elberta or South Haven for maximum production.

Rochester. One of the best early Peaches. Yellow freestone with mottled red blush. August 15th to 20th.

Free Plant Offer—See Order Blank

South Haven. Large, well shaped fruit of beautiful yellow color and excellent quality. Bears very young (many the second year). August 25th to September 1st.

Diameter, 9/16" to 11/16"; height, 4 ft. up; 30c each; any 5 for 25c each; 100 for \$20.00.

Diameter, 7/16" to 9/16"; height, 3 ft. up; 25c each; any 5 for 20c each; 100 for \$15.00.

HOME PEACH ORCHARD. Ten large size trees: 1 Champion, 2 Elberta, 2 Gold Drop, 1 J. H. Hale, 2 Rochester, 2 South Haven. All 10 trees for only \$2.25.

Plums

Plums do well on any good loam. With a minimum of care they will produce abundantly delicious fruit. Every home orchard should include several Plum trees.

Abundance. One of the best known Japanese varieties. Large, lemon-yellow; early.

Burbank. A hardy Japanese Plum of fine red color and quality.

German Prune. Dark purple, freestone. Tree large and productive.

Grand Duke. A good, late shipping Plum. Fruit dark purple; good flavor; clingstone.

Italian Prune (Fellenberg). A large, dark Plum of superior quality. Often called German Prune.

Lombard. One of our most popular Plums. Will grow anywhere and is very productive. Fruit roundish and dark red.

Monarch. A handsome purple Plum of good size and quality. Productive.

Reine Claude (Green Gage). Abundant bearer. Fruit golden yellow, very sweet and juicy.

Diameter, 11/16" and up; height, 5 ft. up; 50c each; any 5 for 45c each; 100 for \$35.00.

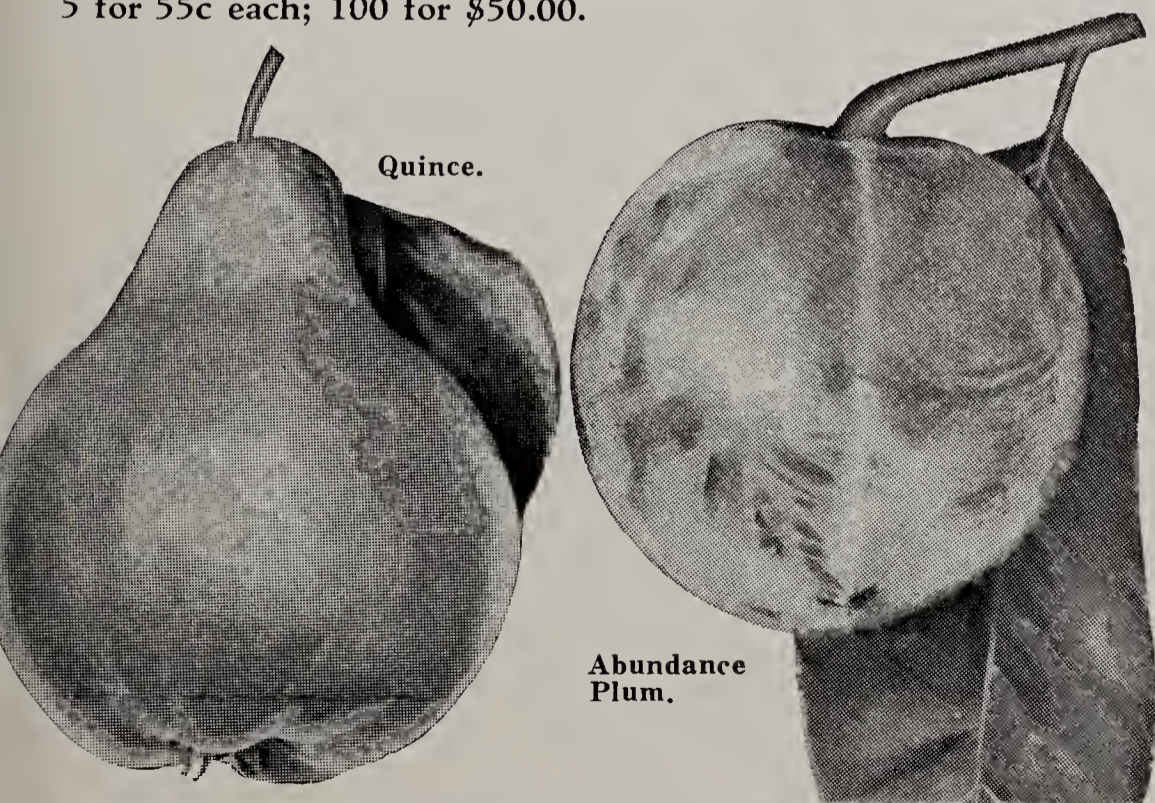
Apricot and Quince

Moopark Apricot. Large, juicy fruit, nearly round, orange with orange-red cheek. August. Plant some of these and surprise yourself and friends when you pick the first crop of luscious fruit.

Champion Quince. A popular commercial variety. Fruit large, yellow, tender, and of very good quality. The Quince is a small tree, very hardy and ornamental as well as fruitful.

PRICES ON APRICOTS AND QUINCES:

Diameter, 9/16" to 11/16"; height, 4 ft. up; 70c each; any 5 for 55c each; 100 for \$50.00.



Your Friends Will Want This Catalog—See Order Blank



Concord Grapes.

Small Fruit Plants

Grapes

Our grapes are strong, well rooted plants, with plenty of buds. Two-year, No. 1, from cuttings.

Agawam. Rich, red, sweet, good keeper.

Campbell's Early. A hardy, choice black Grape.

Concord. The most popular black Grape.

Catawba. Dark red; good keeper. Commercial type.

Delaware. Choice light red table Grape.

Moore's Early. Large, black; earlier than Concord.

Niagara. Large, productive green Grape.

PRICES:

Your choice at 20c each; 3 for 40c; 10 for \$1.20; 100 for \$10.00.

SPECIAL GRAPE ARBOR COLLECTION. 7 plants, above varieties. Labeled, 90c; 2 collections for \$1.60.

Raspberries

Chief Red Raspberry. Wonderful new early variety. Very early, heavy yielder, disease resistant, and very hardy.

Latham. The most popular red Raspberry grown. Strong, healthy grower. Good bearer, large attractive berries.

St. Regis (Everbearing). A very valuable late introduction. A high quality red Raspberry that produces all season. Hardy.

Cumberland Black Raspberry. Best of all black Raspberries for garden or commercial plantings. Our extra large plants graded to size assure you of the very best at the lowest price. Cumberland plants are our specialty.

PRICES ON RASPBERRIES:

500 at the 1000 rate.

Varieties	Per 12	Per 25	Per 50	Per 75	Per 100	Per 200	Per 300	Per 400	Per 1000
Chief	\$0.95	\$1.20	\$1.95	\$2.80	\$3.65	\$6.40	\$9.65	\$12.65	\$27.00
Latham70	1.05	1.65	2.40	3.10	4.95	7.10	9.10	19.00
St. Regis70	1.05	1.65	2.40	3.10	4.95	7.10	9.10	19.00
Cumberland ..	.60	.80	1.25	1.75	2.20	3.95	5.15	6.20	11.00

BACK YARD RASPBERRY GARDEN

- 6 Latham Red
- 6 St. Regis
Everbearer
- 6 Cumberland
- 6 Eldorado
Blackberry

Our best No. 1 plants. All 24 plants for 90c.



Latham.



Blakemore Strawberry.



Eldorado Blackberry.

Blackberries

This wonderful fruit is of the easiest culture and will produce abundantly on any soil. Be sure to order some.

Eldorado. The best variety for home and market use. Mid-season. Heavy root cutting plants. 12 for 75c; 25 for \$1.40; 50 for \$1.95; 100 for \$3.00.

Strawberries

Blakemore. Wonderful. New. An exceptionally vigorous heavy producing berry. Fruit is borne on high stems which makes clean fruit and easy picking. Fruit is very uniform in size and shape and good, light red color. Remarkably free from small berries or buttons.

Beauty. One of the best late Strawberries. Berries large, dark red all through, very firm and very good keepers. Good shipper.

Premier. The sensational commercial Strawberry. One of the best.

Senator Dunlap. Large fruit. The best berry for the canning factory. Good shipper.

Mastodon. The most satisfactory everbearing Strawberry.

PRICES ON STRAWBERRIES:

Variety	Per 25	Per 50	Per 75	Per 100	Per 200	Per 300	Per 400	Per 1000
Blakemore	\$0.35	\$0.50	\$0.70	\$0.95	\$1.30	\$1.60	\$1.90	\$4.25
Beauty	.40	.60	.80	1.00	1.45	1.85	2.20	5.25
Premier	.25	.45	.65	.80	1.25	1.50	1.80	4.00
Senator Dunlap	.25	.40	.55	.75	1.05	1.30	1.60	3.50
Mastodon Everbearing	.55	1.00	1.40	1.70	2.80	3.80	4.50	10.50

COMPLETE STRAWBERRY GARDEN. 100 Blakemore, 100 Premier, 100 Mastodon Everbearing. **Special price, \$2.50.**

Asparagus

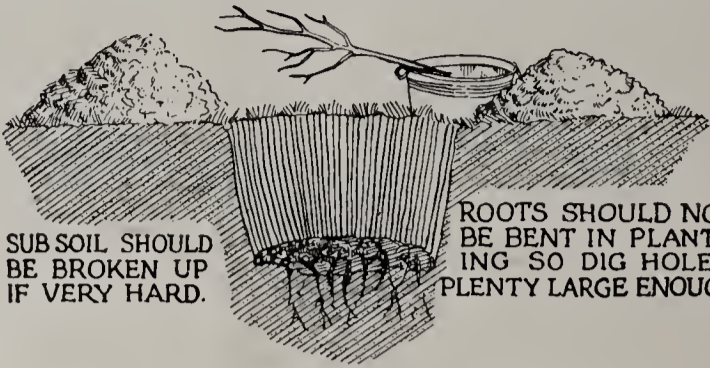
Giant Washington Strain. The largest, most tender, juicy Asparagus known. Hardy and disease free. Our roots this year are the finest we have ever grown and the prices are just about the cost of production.

	Ex. Large	Medium
12 2-yr. plants	\$ 0.60	\$ 0.50
25 2-yr. plants	.85	.70
50 2-yr. plants	1.50	1.25
100 2-yr. plants	2.00	1.50
500 2-yr. plants	6.00	4.50
1000 2-yr. plants	11.00	8.00
5000 2-yr. plants (enough for 1 acre)	49.00	35.00

Special Low Price on Blakemore Strawberries

How to Plant a Tree

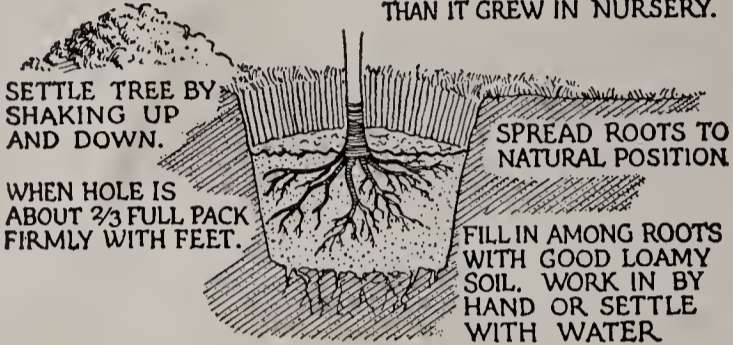
SET TREE IN TUB OF WATER WHILE DIGGING HOLE.



SUB SOIL SHOULD BE BROKEN UP IF VERY HARD.

ROOTS SHOULD NOT BE BENT IN PLANTING SO DIG HOLE PLENTY LARGE ENOUGH

SET TREE TRIFLE DEEPER THAN IT GREW IN NURSERY.

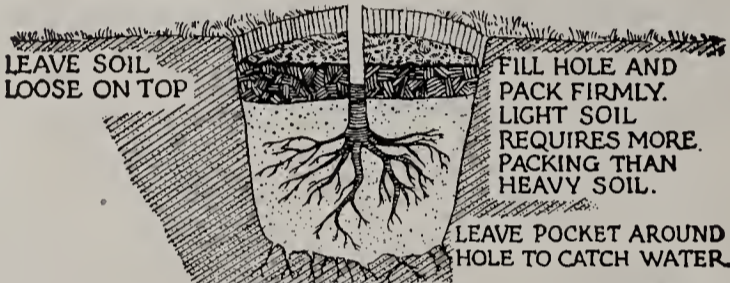


SETTLE TREE BY SHAKING UP AND DOWN.

SPREAD ROOTS TO NATURAL POSITION

WHEN HOLE IS ABOUT 2/3 FULL PACK FIRMLY WITH FEET.

FILL IN AMONG ROOTS WITH GOOD LOAMY SOIL. WORK IN BY HAND OR SETTLE WITH WATER.



LEAVE SOIL LOOSE ON TOP

FILL HOLE AND PACK FIRMLY. LIGHT SOIL REQUIRES MORE PACKING THAN HEAVY SOIL.

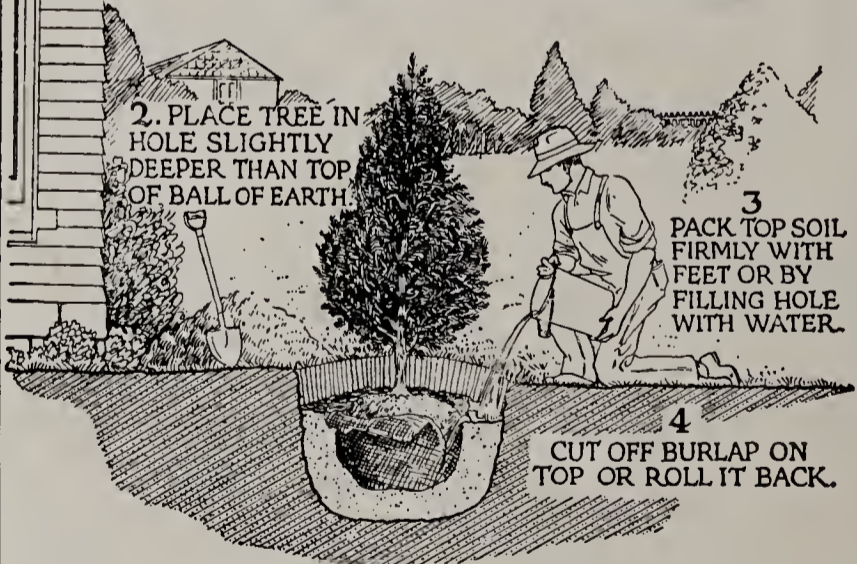
LEAVE POCKET AROUND HOLE TO CATCH WATER.

IMPORTANT: WE DO NOT ENCOURAGE THE USE OF MANURE. IF WELL DECAYED AND MIXED WITH SOIL IT SHOULD BE USED ONLY ON THE TOP

How to Properly Plant Evergreens

1

DIG HOLE AT LEAST A FOOT LARGER AND DEEPER THAN EARTH ATTACHED TO TREE. COMPLETELY SURROUND ROOT OR BALL OF EARTH WITH RICH LOAMY TOP SOIL.



2. PLACE TREE IN HOLE SLIGHTLY DEEPER THAN TOP OF BALL OF EARTH

3 PACK TOP SOIL FIRMLY WITH FEET OR BY FILLING HOLE WITH WATER.

4 CUT OFF BURLAP ON TOP OR ROLL IT BACK.

5

Add Loose Soil Until the Hole is Filled and Pack Firmly and Leave Liberal Supply of Loose Earth on Top.

HILL TOP ORCHARDS and NURSERIES HARTFORD, MICH.