

Historic, archived document

Do not assume content reflects current scientific knowledge, policies, or practices.

62,43

Philippe Rivoire Peony

LIBRARY
RECEIVED
★ APR 9 1935 ★
U. S. Department of Agriculture



BRAND'S Peonies, Iris
and Lilacs (FALL)
1934
MINNESOTA
BRAND PEONY FARMS Inc. FARIBAULT

Philippe Rivoire
The highest rated red—unlike any other
reds. Beautiful in form and rich
in coloring \$5.00

Myrtle Gentry
A very light late pink. Received Silver
Medal at the National Show in
1923 \$5.00

Hansina Brand
Another great pink. Best flower in National
Show at the Chicago World's
Fair \$5.00

Mrs. A. M. Brand
Immense pure white. American
Peony Society Gold Medal ... \$5.00

Blanche King
A very deep rose. Award of Merit National
Show, London, Ontario. Won Sweepstakes
Prize in Northwestern Peony
Show in 1932 \$5.00

Five Brand Divisions \$15.00
All for

A Finer Five You Could Not
Purchase

Enjoy a Long Blooming Season

By Planting These 15 Varieties

Beautiful Flowers from the Very
Earliest to the Very Latest

ALL SELECT VARIETIES

Each a Brand Division

SUPER-EARLY Collection

Blooming very early, in continuous succession... these three varieties give you two whole weeks of Peony beauty **AHEAD OF ALL THE OTHERS!**

LACINIATA. The earliest Peony to bloom. A single. Brilliant vermilion-red. Great golden heart of stamens. Blooms with the early Tulips. Absolutely hardy. Unaffected by hard late frost. The foliage is heavily cut like that of the Fern Leaf Sumac. This variety was in full bloom on May 15th this season. **A Brand Division \$2.00.**

TENUIFOLIA FLORA PLENA. Next earliest to bloom. A double. Very brilliant crimson. Finely cut foliage, so much like that of the Cosmos. Every season we receive numerous requests for the name of this flower. Tenuifolia should always be carefully mulched the first winter after planting. Plant as early in the fall as practicable. Very scarce. We have but a small stock to spare this fall. This variety was in full bloom here in our fields on May 20th. **A Brand Division \$3.00.**

OFFICINALIS RUBRA. Next earliest to bloom. That large brilliant red Peony so often seen as a favorite in old gardens. In latitude of southern Minnesota it generally blooms by Decoration Day. It does not begin to pass out until just before the main crop of other Peonies appears. Officinalis Rubra is always in bloom here June 1st or before. **A Brand Division \$1.00.**

Fully two weeks preceding the early Chinese Peonies—Laciniata blooms first, then Tenuifolia, then Officinalis Rubra. Each remains till the next appears. The last of these remains to be succeeded by our early flowering collection.

If Purchased Separately a Total Value of \$6.00. **\$5.00**
Collection Price, For All Three

Late Flowering Collection

E. B. BROWNING. A very late white coming into bloom with Marie Lemoine. The buds of this variety are often as large as the entire blooms of other fair sized Peonies. Very fragrant.

GRANDIFLORA. Soft shell-pink. When you think the Peony season is over, you can still cut beautiful large blooms from Grandiflora.

EUGENE BIGOT. In color this Peony is a very rich, bright dark red. The blooms are of medium size, showing stamens. Very late, in season with Rubra Superba. Very desirable as a cut flower red for the home market because of its lateness.

CLAIRE DUBOIS (Crousse). Deep pink. Among hundreds of varieties, you occasionally find one Peony which, for all-around good qualities, excels all others. Such is Claire Dubois. Immense globular form. Long incurved petals—a uniform shade of clear violet-rose, tipped silvery white. A late flower otherwise comparable to the early variety, Mons. Jules Elie. Excellent cut flower.

Regular Price \$5.00 **\$4.00**
Collection Price



Tenuifolia Flora Plena.

Early Flowering Collection

If you wish four excellent Peonies to brighten your garden early in the season, we suggest:

RICHARD CARVEL. The best early red on the market. Wonderfully fragrant. Strong, upright grower. Very free bloomer.

MONS. JULES ELIE. One of the world's 26 best Peonies. Fragrant. A wonderful lilac-pink.

MME. DE VERNEVILLE. A splendid early white; parallel in form, type and beauty to Richard Carvel and Mons. Jules Elie.

EDULIS SUPERBA. A deeper pink than Mons. Jules Elie, known as the Decoration Day pink. Noted for its wonderful fragrance.

All four varieties will be in bloom at the same time, but Richard Carvel will appear first.

Regular Price \$4.50 **\$3.50**
Collection Price

Midseason Flowering Collection

Three from this list rate 9.0 and belong in the world's 26 best.

SARAH BERNHARDT. A prize-winning Peony in every show room. Equally superb as a garden variety. Deep pink, tipped silver. Unusually large; delightfully fragrant.

GEORGIANA SHAYLOR. Light pink. We have always held that this is Mr. Shaylor's greatest flower. If he had never produced another variety, this one alone would immortalize his name among Peony lovers.

MARY BRAND. No red Peony ever won favor so quickly. Always found among the winning reds in every show room. Color so distinct, it is easily recognized.

BARONESS SCHROEDER. Classed as a white but opens blush pink, fading to white. Considered one of Kelway's best productions. In the last symposium it continued to rate 9.0 after seventy-nine people had voted.

Regular Price \$5.00 **\$4.00**
Collection Price

These 4 Collections

will give the longest possible blooming season of this flower and a whole season of Peony pleasure.

A Total Catalog Value of \$20.50.

Our Extra Special Price

\$15.00

From

Post Office

County

State

PLACE
STAMP
HERE

Brand Peony Farms, Inc.

Faribault,

Box 408

Minnesota

Foreword

IT is Memorial Day and our 1934 fall catalog is just going to press. We are experiencing an unusually brisk Decoration Day trade in Peony cut flowers. We live too far north to depend on Peonies for Decoration Day. The normal season for Peonies to bloom at Fairbault is around June 12th. This season, however, the unusually warm weather has brought the Peonies forward fully two weeks ahead of time. They are gorgeous flowers and our fields are a blaze of color.

The rare and unusual feature of having Peonies for Memorial Day is enthusiastically taken up by all those who visit our farm. Richard Carvel was the first to bloom, coming on May 28th. It is a splendid red and is going fine as a cut flower; the people like it. Edulis Superba started to open on the 29th, to be followed at noon by Mons. Jules Elie and Festiva Maxima.

We have had a battle with the unusually dry weather in this region, but we are keeping the cultivators going continuously between the rows and in other ways are conserving every bit of moisture there is. The plants look strong and healthy and we will, as usual, deliver vigorous, healthy, strong, clean roots this fall. It is a pledge to our customers that Brand Peony divisions are the cream of the crop.

Personally I sincerely appreciate the orders you have sent, and it is a pleasure to send you our new catalog.

A. M. BRAND



A. M. Brand.

BRAND PEONY FARMS *Furnish the Sensations of Two Successive National Shows*

Both BRAND Peonies

PRAIRIE AFIRE A beautiful new Japanese, first offered by us in 1932. A vase of Prairie Afire exhibited by us at the Des Moines Show was the sensation of that show. We offered it that year and sold every root we could spare of it at \$15.00 per root. This fall we are again offering it and will price it at \$10.00 for a nice root. Prairie Afire is a new and entirely distinct break in color in Japanese Peonies. The guards are broad and a soft creamy rose with good substance. These surround a great ball of brilliant fiery red staminodes. The flower should be cut in the bud and developed inside when the result is simply marvelous. **A Brand Division \$10.00.**

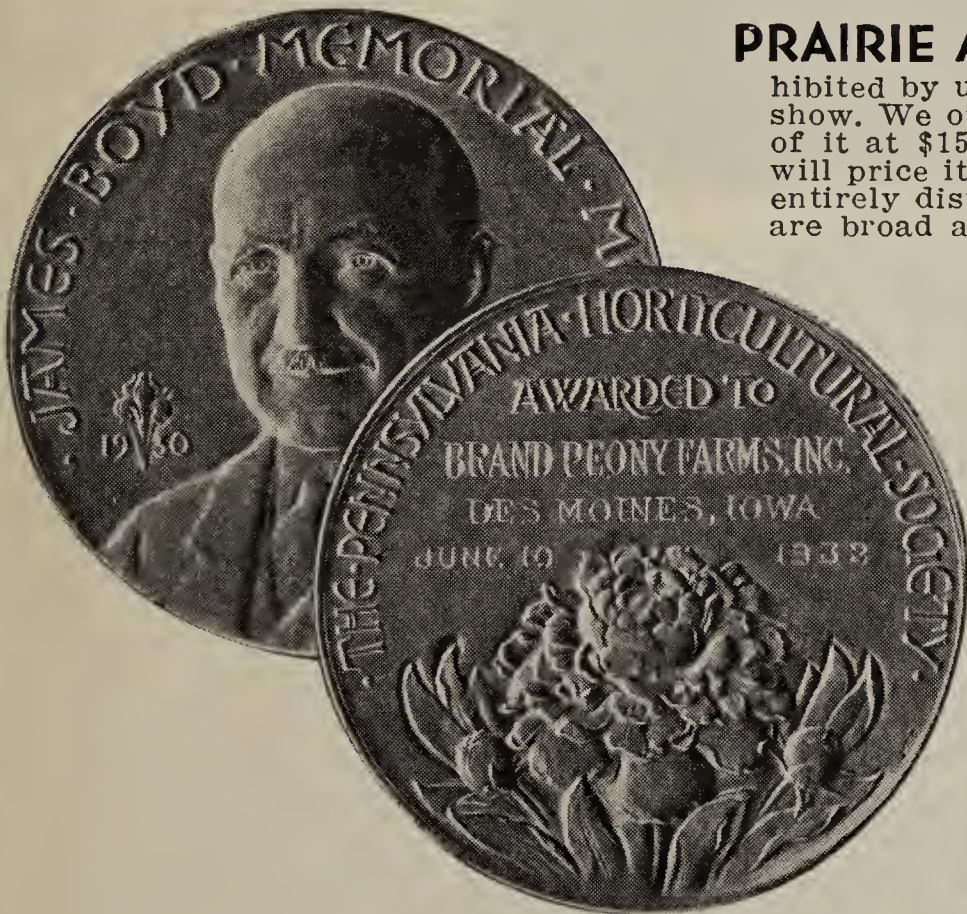
HANSINA BRAND (Brand, 1925). At Chicago at the National Show for 1933, held in the Horticulture Building of the World's Fair, a bloom of Hansina Brand exhibited by Mr. C. W. Bunn was selected by a committee composed of all the judges as

The Best Flower in the Entire Show

Hansina Brand will be found described and priced on page 2.

At Chicago, 1933

A Century of Progress World's Fair Show
HANSINA BRAND (Brand, 1925). Exhibited by Mr. C. W. Bunn. Best flower in the entire show. Awarded Bertrand Farr Memorial Medal.



BRAND PEONY FARMS, Inc.

Box 408

FARIBAULT, MINNESOTA

A. M. BRAND, *President*

MYRTLE GENTRY, *Sec'y-Treas.*

Descriptive List of Brand's New Peonies

BLANCHE KING (A. M. Brand 1925). Deep pink. Peony lovers have been constantly searching for a good, deep, late pink. We have now found this flower in Blanche King. This new variety is of wonderful size, symmetrical, and of true rose type. It is a glowing deep pink that holds its color in the field and also develops into a wonderful show flower. This variety was first exhibited at the National Peony Show held in London, Ont., Canada, in 1922. Here it received an award of merit and attracted a great deal of attention. Our stock was limited at that time and we sold more stock of this variety than we should. We did not exhibit this variety again until this season at the St. Paul Show. Here Blanche King was very much in evidence as we had sufficient stock to again make a good showing. Here it was awarded the prize for the best flower at the show and also won first in a class of twenty best dark pink.

A Brand Division \$5.00.

COMMANDER (A. M. Brand 1928). Red. An extra large, high built flower; very compact. A cone-shaped rose type Peony. Color a true self solferino-red. Although late, it blooms consistently, which cannot be said of most late varieties. After every other red in our fields was gone this year, we could still go out and bring in excellent flowers of this variety for our show room. A real acquisition to our quality list of Brand's reds.

A Brand Division \$5.00.

ELLA CHRISTIANSEN (A. M. Brand 1925). 9.0. Pink. Although not so deep a pink as Blanche King, Ella Christiansen is so distinct from the delicate pinks in coloring as to be a real acquisition. The flower is exceedingly large, both on the plant in the field and when handled as a cut flower. As a bloomer, it is probably the most profuse of this exclusive list. Petals are long, narrow and heavily serrated on the edges. The flower first opens cup-shaped, then flat. Irresistibly appealing—Ella Christiansen receives the unbounded praise of every visitor. We like it better every year.

A Brand Division \$5.00.

HANSINA BRAND (A. M. Brand 1925). 9.1. Pink. A flower of beautiful form and great size. Plant very tall and strong; holds the mammoth blooms erect. Color glistening flesh-pink with a salmon reflex shading toward the base of the petals. Very distinct. As it fades, it resembles a perfectly formed specimen of Solange, for which it is often mistaken in our show room. Yet Solange sometimes fails to develop its flowers at all or produces imperfect bloom, while Hansina Brand comes good every year. One of the very best of this particular group.

A Brand Division \$5.00.

HAZEL KINNEY (A. M. Brand 1925). 9.0. Delicate pink. I can still remember this beautiful flower as it appeared on the plant the first time. The form was so superb and the color so pure; it impressed us at once as a flower of great promise, which it since has proved. A great show flower when displayed alongside the very best. True rose type. Color a delicate clear hydrangea-pink. Medium height plant; clean, light green foliage; late midseason; a prolific bloomer.

A Brand Division \$5.00.

LAVERNE CHRISTMAN (A. M. Brand). 8.9. Pink. A very large deep pink of varied shadings. The flower resembles a good Therese. The plant is tall and a vigorous grower. This variety received an Award of Merit at St. Paul, Minn., in the National Show held during 1923. Very late.

A Brand Division \$5.00.

MRS. A. M. BRAND (A. M. Brand 1925). 9.6. Pure white. When this flower was a two-year-old, we were first attracted with its large, uniform, remarkable white blooms; the clean, thrifty, light green stocks; the luxuriant foliage. Blooms cut in the bud and taken inside develop in remarkable form. Opens a pure, glistening white; pure rose type; a large, flat flower with prominent guards and petals of wonderful substance. Received the Gold Medal of the American Peony Society, St. Paul, 1923. Very late.

A Brand Division \$5.00.

MRS. DEANE FUNK (A. M. Brand). Too new to be rated. Pink. Large and peculiarly beautiful in formation. The broad guards and half of the petals turn outward, gracefully downward, then up. Next is a distinct band of golden stamens as in Phyllis Kelway. Lighting up the entire flower, these stamens enclose a rosebud, cup-shaped center of large incurving petals.

Color a Walter Faxon pink. Magnificent in the show room; holds up well as a cut flower; beautiful in the field. Among the five or six best seedlings we ever produced.

A Brand Division \$5.00.

MRS. FRANK BEACH (A. M. Brand 1925). 9.0. Ivory-white. A very large, flat, perfect rose type flower with long, narrow, lacinated petals of the same lacy effect as in Jubilee. Blooms equally large as Jubilee but borne finely erect on rather dwarfish plants with very strong stems. Much as we admire Jubilee, it is handicapped by a weak stem. Mrs. Frank Beach is a glorified Jubilee. Deep cream, it fades but little even when developed in the field. Like Le Cygne, this variety develops a flower true to type even on a yearling. Blooms profusely as a two-year-old. Received an Award of Merit, American Peony Society, London, Ontario, 1922. Late midseason. Sweetly fragrant.

A Brand Division \$5.00.

MRS. HARRIET GENTRY (A. M. Brand 1925). White. One of the most refined flowers in the list. Another white of most perfect rose type. Petals very large, of the purest glistening white, arranged in wonderful per-

fection. Comparable to a perfect specimen of that wonderful flower, Mirielle. Mrs. Harriet Gentry invariably blooms well with flowers of utmost beauty, while Mirielle gives perfect bloom so seldom that we do not recommend it.

A Brand Division \$5.00.

MRS. JOHN M. KLEITSCH (A. M. Brand 1925). 9.0. Pink. The flower that claimed everyone's attention the third day of the St. Paul-Minneapolis show. On the first day the buds taken to this show just started to open; the second day they were about half out; the third day they were in full bloom—the most remarkable vase of Peonies in the whole vast room. Color a violet-rose with distinct lavender cast. Petals long, broad, pointed, of great substance. Pleasing and perfect in form—a wonderful flower of true rose type. Very late; fragrant. Took first prize as the best flower in the entire show, 1928 Northwest Peony and Iris Show.

A Brand Division \$5.00.

MRS. ROMAINE B. WARE (A. M. Brand 1925). 9.1. Pink. One of the most delicately beautiful Peonies ever produced. First selected from the seed bed because of its striking beauty of form. True rosebud effect in the center, the petals radiating in peculiar fashion to give a pleasing effect to the entire bloom. Returning from the National Show at Boston, I stopped with my good friend Harry F. Little. Mrs. Romaine B. Ware was in full bloom. Of this wonderful flower Mr. Little said, "I think this one of the daintiest of all Peonies in its perfect beauty." Exquisitely delicate; medium size; rose type. Medium height plant; profuse bloomer; mid-season. Fragrant.

A Brand Division \$5.00.



Mrs. A. M. Brand.

FROM KENTUCKY

May 29, 1933.

I had six lovely blooms from a two-year-old Blanche King, three of the flowers being very large and nice.

LATEST NEWS FROM THE SOUTH

Mrs. John M. Kleitsch made only two flowers as a 2-year-old, but one of them was fine; and what a darling shade of pink this one is.

BRAND'S NEW PEONIES—Continued.

MYRTLE GENTRY (A. M. Brand 1925). 9.1. Pink. A plant of splendid growth and clean appearance holds the beautiful great flower erect and well above the foliage. Immense flowers of perfect rose form with great broad, nicely rounded petals of wonderful substance. Color beautiful pink with tints of flesh and salmon. While all of these new Peonies have a pleasing odor, this one is the sweetest; the fragrance of a Tea Rose. Awarded Silver Medal at St. Paul Show in 1923.

A Brand Division \$5.00.



Myrtle Gentry.

A Brand Division \$5.00.

PRESIDENT COOLIDGE (A. M. Brand 1928). Too new to be rated. Pink. Large, beautiful flowers; a rather uniform lavender-pink. Irregular petals in unique irregular formation. The prominent guards stand out from the rest of the flower; very attractive from a distance. The entire flower is climaxed by a striking rosebud effect. Blooms carried well above the foliage on strong stems. A late Peony, remarkable both as a show flower and landscape variety.

A Brand Division \$5.00.

REV. H. TRAGITT (A. M. Brand 1928). White. Very large, of true rose type. Great blooms of the most perfect form resemble large balls of snow. The dwarf plants with strong stems hold the great white blooms erect. Very sturdy, even growth—planted in rows, they present a remarkable sight when in bloom. So profuse, the blooms cover the whole plant with a solid mass of white. Usually pure white, yet occasionally a faint trace of red shows on an inner petal. Globular in form; great broad snow-white petals of great substance. This variety resembles Le Cygne but it is late while Le Cygne is early.

SUSAN B. WHITE (A. M. Brand 1933). White. A pure white of very fine form and large size. Plant tall, luxuriant dark green foliage. Individual blooms very large; petals very long and narrow, form a great compact dome-shaped flower with large guards dropping gracefully away from the balance of the flower. Pure white, tinted heavily cream, with green showing at base of petals.

A Brand Division \$5.00.

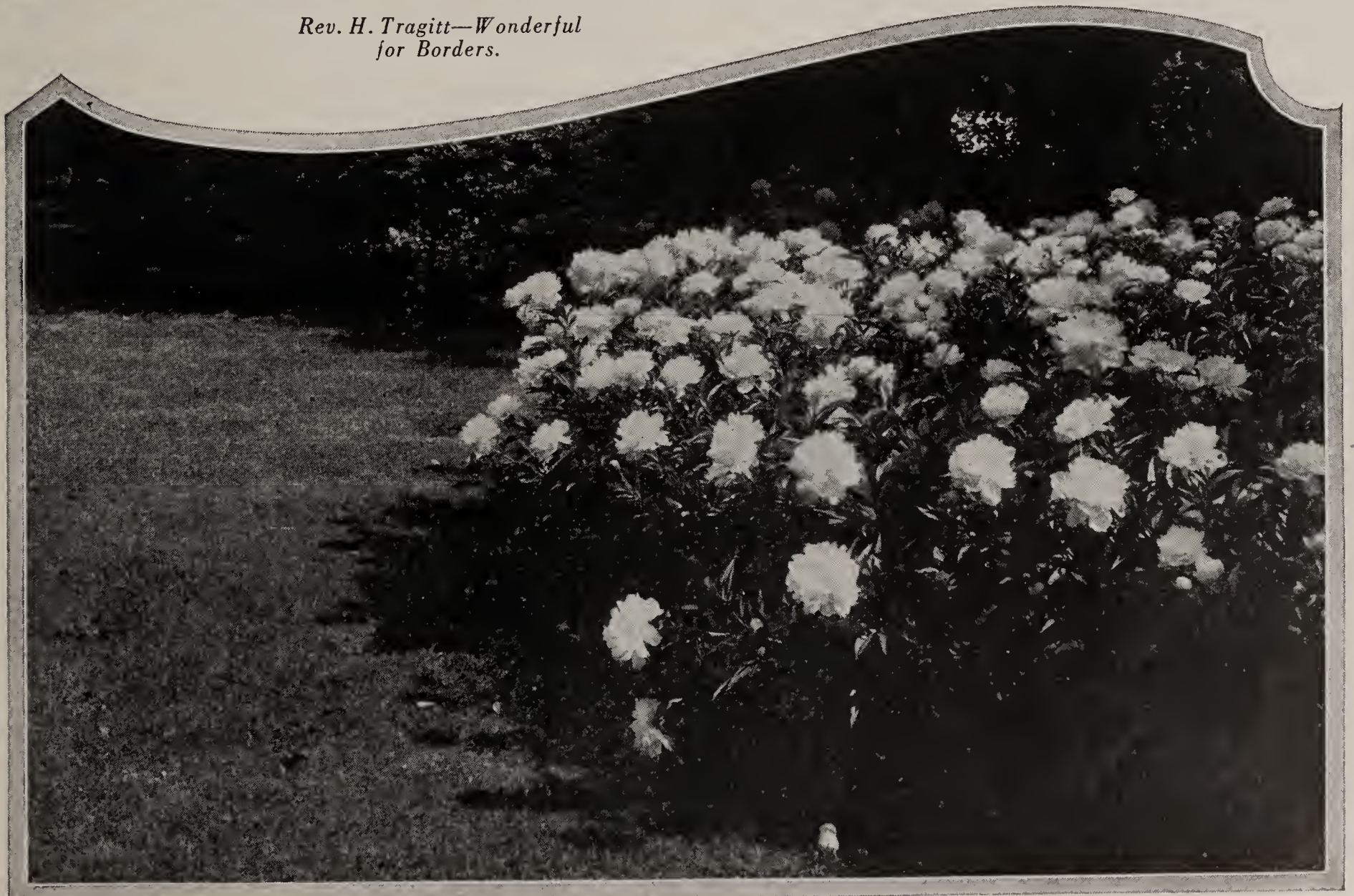
VICTORY CHATEAU THIERRY (Brand). 8.9. Pink. A very large flower with immense, broad, evenly arranged, rounded petals of great substance; petals remindful of those on Lady Alexandra Duff. A clear bright pink, gradually fading to a lighter pink. This variety is the earliest of all of these new Peonies; and, like Richard Carvel and Judge Berry, is seldom seen in the show room. The plant is of medium height with very strong stems that hold the large, cup-shaped blossoms well erect. We consider this variety one of the very best in this list of new ones.

A Brand Division \$5.00.

ALSO FROM KENTUCKY

Victory Chateau Thierry is really the king of the garden. This flower is large and fine. I got ten large blooms from a three-year-old.

Rev. H. Tragitt—Wonderful for Borders.



Special Offer
on These
Prize-Winning
PEONIES

Make up your own collection
of any 3 Peonies in this group
for

\$10.00

Remember every root is a
Brand Division and will bloom
for you next season.

Our General List of Peonies



Claire Dubois.

ADOLPHE ROUSSEAU (Dessert and Mechin). 8.5. Red. One of the very good early dark reds. The plant is very tall and holds its flowers so erect that it makes a fine showing. One of the finest of all red Peonies as a landscape variety. A great dark flower that looks almost black and unusually rich when viewed from a distance.

A Brand Division \$1.00.

ALICE HARDING. Broad, evenly rounded guard petals of delicate flesh-pink, surrounding a cupped center of long, irregular petals of creamy white. Sweet fragrance. This variety was awarded a special prize by the Societe Nationale d'Horticulture de France. Lemoine considers this his best flower.

A Brand Division \$10.00.

ALSACE-LORRAINE (Lemoine). 8.8. A late midseason. Creamy white. A dainty and refined flower of beautiful form. Color a rich creamy white with a suggestion of brownish yellow at the base of the petals similar to Solange. When well grown this is one of the most beautiful and refined of all Peonies.

A Brand Division \$1.00.

A. M. SLOCUM (Franklin). 9.0. A large, late, variable flower opening a pale rose-pink and showing a ring of prominent stamens. Center light, almost white. Spreads open in a hollow cuplike fashion showing stamens and carpels in center. A profuse bloomer.

A Brand Division \$2.00.

A. P. SAUNDERS (Thurlow). 8.6. Delicate pink. A large loosely built flower of true rose type. Outside petals extremely large with a ball of shorter petals unfolding in the center. Late.

A Brand Division \$3.00.

AVALANCHE (Crousse). 8.7. White. A late midseason variety. The flower is cone-shaped and makes a splendid show flower. The blossom develops a distinct creamy white flower, surrounding a center of delicately tinted lilac-white petals with a few showing traces of carmine.

A Brand Division \$1.00.

AVIATEUR REYMOND (Dessert). 8.0. Red. A bright cherry-red, shaded garnet. A loosely built midseason variety.

A Brand Division \$1.00.

BARONESS SCHROEDER (Kelway). 9.0. White. This is considered one of the finest Peonies grown. When the last symposium was taken, this variety received a rating of 9.0 after 79 people had voted. When the buds first open, they are a delicate blush, but the flower soon fades to a milky white. This is a variety that should be found in every collection. It comes into bloom late, after most of the white Peonies are gone.

A Brand Division \$1.00.

BRAND'S MAGNIFICENT (Brand). 8.2. Red. A very deep dark red carrying more blue than any other good Peony. This variety is noted for its beautiful form, prolific bloom, broad symmetrical petals, and excellent color. A late midseason variety.

A Brand Division \$1.00.

CANDEUR (Dessert). 8.4. Pink. A large, late midseason, globular rose type flower showing stamens. A very beautiful, delicate pink, slightly tinged lilac-rose, fading to iridescent white; center petals flecked carmine. A very vigorous grower with clean light green foliage.

A Brand Division \$1.00.

CHERRY HILL (Thurlow). 8.6. Red. A very tall growing semi-double bright dark red that is early, and splendid as a landscape variety. The color is a deep garnet, with a sheen so rich that the variety is very noticeable among all other reds. For best effects this variety should not be disbudded. Awarded a silver medal by the Massachusetts Horticultural Society.

A Brand Division \$1.50.

CLAIRE DUBOIS (Crousse). 8.7. Pink. A late flower of immense, globular form, with long, incurved petals of a uniform shade of clear violet-rose, tipped silvery white. It has that same wonderful attractiveness possessed by Mons. Jules Elie. They are much the same in color but Claire Dubois is late where Mons. Jules Elie is early. The best cut flower of its color in its season.

A Brand Division \$1.00.

CORNELIA SHAYLOR (Shaylor). 9.1. Pink. We think that this is one of Mr. Shaylor's best Peonies. A very late variety with heavy stems and excellent foliage. It opens a decided pink but gradually fades to an almost pure white with a greenish tint at the base of the petals.

A Brand Division \$5.00.

COURONNE d'OR (Calot). 8.1. A most dependable white. Outer petals a pure white; then a ring of yellow stamens surrounding a tuft of center petals, tipped carmine. A late white coming into bloom just before Marie Lemoine.

A Brand Division \$1.00.

DAVID HARUM (Brand). 8.4. Red. The flowers are very large with prominent guard petals surrounding a great ball of closely packed petals of the same shade. The entire flower is an even shade of soft Tyrian rose, without stamens. An upright growing plant with very strong stems that hold their great blooms erect. One of the very best landscape reds. This variety appeared in five prize-winning collections at the National Show held at Des Moines in 1924.

A Brand Division \$1.00.

DESIRE (Brand). 8.5. Pink. Very large flower, rather loosely built, with long, broad petals showing stamens. Flowers very fine on well established plants.

A Brand Division \$1.00.

E. B. BROWNING (Brand). 9.1. White. A very late white coming into bloom with Marie Lemoine. The buds of this variety are often as large as the entire blooms of other fair sized Peonies. The bud opens slowly, and as the petals unfold, a delicate pink coloring appears; the inner surface of the petals being washed with the most delicate pinkish canary. The perfume of the flowers is strong and sweet. The variety is so late that it is not always seen in Peony shows.

A Brand Division \$2.00.

EDULIS SUPERBA. 7.6. Pink. We do not believe that justice was done this grand old variety in the symposium that placed its rating at 7.6. It is the first good early deep pink. It sometimes opens for Decoration Day with us in Minnesota. The flowers are large, borne profusely on tall, strong stems. A loose, crown type flower, of a beautiful deep pink. One of the greatest of all cut flowers in its color and season.

A Brand Division \$1.00.

E. J. SHAYLOR (Shaylor). 8.7. Pink. A deep rose-pink, shading lighter at the tips of the petals. Surrounding the center petals is a distinct band of petals edged and tipped with gold, which produces a very pleasing effect. A late midseason variety.

A Brand Division \$3.00.

ELWOOD PLEAS (Pleas). 8.7. Pink. A large to very large flower of true rose type. It opens flat. The plant is strong and sturdy, of medium height with rich, healthy foliage that reaches to the ground, making the variety a most desirable landscape sort. The blooms are fine in form and of a shade of pink that is very pleasing. Late midseason. Very fragrant.

A Brand Division \$1.00.

ENCHANTERESSE (Lemoine). 8.9. White. A charming very late white. An excellent show flower. Prolong your blooming season by adding this excellent variety to your list. We understand that this is not a good flower for the South, as it is very late and does not open well, but the farther north it is grown, the better it becomes. As grown with us, it is rated far too low. It is surely entitled to a rating of 9.2. A splendid pure white.

A Brand Division \$1.00.

EUGENE BIGOT (Dessert). 8.3. Red. In color this Peony is a very bright dark red. The blooms are of medium size, showing stamens. Very late, in season with Rubra Superba. Very desirable as a cut flower red for the home market, because of its lateness; yes, one of the best late cut flower reds.

A Brand Division \$1.00.

EUGENIE VERDIER (Calot). 8.6. Pink. A tall growing, very large, flat flower of a light hydrangea-pink, coming into bloom early midseason. The petals are lighter towards the outside and gradually grow deeper in color towards the center. One of the showiest and most beautiful of pink Peonies. **A Brand Division \$1.00.**

EUNICE SHAYLOR (Shaylor). 8.9. Flesh-pink. A mid-season semi-double variety; beautiful on matured plants. Outer petals are a light pink. Center petals are a flesh-white with a circle of golden stamens around the center tuft. A good show flower with a Tea rose fragrance. **A Brand Division \$5.00.**

FANNY CROSBY (Brand). 7.7. Yellow. Large light pink guard petals surround a central globe of deep yellow incurved petals. Early. So far there are three good yellow Peonies, Primevere, Laura Dessert, and Fanny Crosby. One year one of these may be the best, the next year it may be another, and still another year the third. They are all different in season of blooming, so we need all three. **A Brand Division \$1.00.**

FARIBAULT (Brand). 8.2. Pink. A late variety coming into bloom with Marie Lemoine. A deep rose-pink with a silvery sheen. Faribault is a very profuse bloomer. **A Brand Division \$1.00.**

FELIX CROUSSE (Crousse). 8.4. Red. Late. A deep rose-red showing no stamens. Consists of a central bomb of incurved petals surrounded by broad, prominent guard petals. A good all-purpose red. **A Brand Division \$1.00.**

FLORENCE MACBETH (Sass). 9.2. Pink. Very large, cup-shaped flowers opening out flat. Color a soft blush pink at the center fading lighter towards the edges. Form very fine. This variety was first shown at the National Show in Des Moines, Iowa, and its merits were such that it received a Certificate of Merit. An exceptional vase of 20 blooms of it was shown in the light pink class and here it was awarded first prize over many fine entries. **A Brand Division \$5.00.**

FRANCES WILLARD (Brand). 9.1. White. Frances Willard is a very fine white which we believe gives universal satisfaction. It opens an exquisite blush white, occasionally with a carmine touch, changing pure white. Usually found in the winning classes in every show room. Midseason, comes into bloom with Mary Brand. **A Brand Division \$1.50.**

FRANCOIS ROUSSEAU (Dessert). 8.2. Red. An early red variety that seems to have been somewhat overlooked by those who are purchasing the really choice red Peonies. It is an exceptionally brilliant red. In the show room its color is so intense as to cause it to stand out among all the reds. Every lover of a good red Peony should have Francois Rousseau. **A Brand Division \$1.00.**

GALATHEE (Lemoine). 8.1. Pink. A large, full, double flower, rose type. Color fleshy white. Fragrance pronounced and pleasant. A tall, strong grower. One of the very good late ones. This was one of our very finest show flowers last season. **A Brand Division \$1.50.**

GEORGIANA SHAYLOR (Shaylor). 8.9. Pink. A large, late midseason light rose-pink. Fragrance pleasing; plant medium height; floriferous; good stems and foliage. If Mr. Shaylor had never produced another Peony, this one alone would immortalize his name among Peony lovers. We always include it in our collections if our stock is sufficient to supply the demand. A great show flower. **A Brand Division \$2.00.**

GRANDIFLORA (Richardson). 8.8. Pink. A soft shell-pink, shading to white with faint shadings of rose. When one thinks the Peony season is ended, he can still go out and cut fine blooms of Grandiflora. For this reason Grandiflora should be in every garden. **A Brand Div. \$1.00.**

HENRY AVERY (Brand). 8.8. Light pink. A late midseason variety. Guards and center petals a bright light pink. Between the guard and center petals is a very distinct collar, from an inch to an inch and a half wide, of creamy yellow petals. This gives the flower a very striking appearance. This is a handsome Peony making a fine garden variety as well as a striking show variety. **A Brand Div. \$2.00.**

JAMES BOYD (ThurLOW). 8.9. Flesh-pink, changing to nearly white, tinted at base of petals with yellowish salmon. Guard petals notched at tips, giving a fringed effect. Very fragrant. Late. **A Brand Division \$2.50.**

JAMES KELWAY (Kelway). 8.7. White. This variety received a rating of 8.7 when the last symposium was taken, after 49 people had voted. This fact, alone, places it among the good varieties. The flower is very large, loose and semi-rose in type. It opens a rose-white changing to milk-white with base of the petals tinged yellow. The fragrance is strong and pleasing. **A Brand Division \$1.00.**

JEANNOT (Dessert). 9.2. Pink. A large, imbricated cup-shaped flower of fine form. Flesh-pink, slightly tinged lavender, with salmon-pink shadings at base of petals. A very fine show flower, coming into bloom late in the season. **A Brand Division \$3.00.**

JUBILEE (Pleas). 8.9. White. Very large, flat, ivory-white flowers. Petals long, narrow and loosely arranged, producing a very attractive feathery effect. Everyone familiar with Peonies knows that Jubilee is a fine flower. Its only defect is a weak stem, yet one can well afford to support such a beautiful flower. **A Brand Division \$2.00.**

JUDGE BERRY (Brand). 8.6. Pink. This is a fine delicate pink coming into bloom with that very early deep pink, *Edulis Superba*. Its attractive, large flat flowers are of excellent color and texture. Coming at the beginning of the Peony season, when most varieties are of small or medium size, this immense flower has a peculiar distinction, and will be wanted by every Peony buyer who wishes a really good early pink. **A Brand Division \$2.00.**

JUNE DAY (Franklin). 9.0. Pink. We think June Day is one of the very best of Mr. Franklin's introductions. A flower of striking beauty, light flesh with lavender shadings on the edge of the central petals. Pleasing fragrance, upright grower with dark green foliage. **A Brand Division \$3.00.**

KARL ROSENFELD (Rosenfeld). 8.8. Red. A brilliant and striking variety, coming into bloom early mid-season. Flowers very large, semi-rose type, and slightly fragrant. Desirable as a cut flower. **A Brand Division \$1.00.**

KATHERINE HAVEMEYER (ThurLOW). 9.0. Originator's description: "Large, rose type, flesh-pink in color; guard petals broad and rounded, somewhat notched at the ends. Center petals narrow and fringed. Full, high center. Sweet fragrance. Midseason to late. Honorable Mention, American Peony Society, London, Ontario, 1922." Of all of ThurLOW's Peonies, which we regard very highly, Katherine Havemeyer is one of the best. **A Brand Division \$4.50.**

KELWAY'S GLORIOUS (Kelway). 9.8. White. Midseason. Although not as symmetrical as *Le Cygne*, we believe this wonderful variety is fully as good and deserves as high a rating. Immense blooms with very long petals, so arranged that the entire bloom resembles a great downy ball of the most exquisite, delicate, snow-white lace. For a Peony of great size, probably no other can exhibit such perfection of beauty. **A Brand Division \$4.00.**

Frances Willard.



KELWAY'S QUEEN (Kelway). 8.8. Pink. The stocks of this variety have been badly mixed and many spurious sorts have been sold under the name of Kelway's Queen. Once the genuine variety is seen, there can be no mistake. It is a distinct Peony, both in flower and plant. We have the true variety and guarantee our stock of Kelway's Queen to be absolutely genuine. A large, compact, rose type flower of uniform mauve, with center flecked crimson. A tall, strong grower, very profuse bloomer. Late midseason. One of Kelway's finest. Very distinct color, a great show flower.
A Brand Division \$4.00.

LADY ALEXANDRA DUFF (Kelway). 9.1. Pink. One of the largest and most beautiful of all Peonies. An immense, loosely built flower with great broad rounded petals. A pale blush pink, fading to white, with yellow stamens. When not disbudded, the central flower is loosely double, of a rather flattened, circular form; central petals touched with carmine. A beautifully formed flower; sweet scented. Very floriferous. Very showy. Opening after the central flower, the side flowers come semi-double, saucer-shaped, showing stamens.
A Brand Division \$1.00.

LA FEE (Lemoine). 9.2. Pink. A scarce variety, seldom seen in any garden. Plants tall with but few stalks to the plant. Long, narrow, sharply pointed foliage. Flowers very large, loosely built, with long narrow petals sharply notched at the edges. Guards mauve-rose. Collar creamy white. A beautiful mottling of different shades of pink. Strikingly beautiful, both in the field and show room.
A Brand Division \$2.50.

LA FRANCE (Lemoine). 9.0. Pink. A flower that gives wonderful results in our soil and climate. Blooms very large, true rose type. Color a true uniform apple-blossom-pink, with crimson splashes on the guards. Tall, strong, robust plant—a suitable support for enormous blooms. In the years when La France is in prime, no flower in the pinks outranks it in the shows.
A Brand Division \$2.00.

LAKE O' SILVER (Franklin). Pink. Midseason. This is a light pink silver-tipped variety, with golden anthers prominently showing throughout the flower. The central petals are a darker pink. The bloom is very large, often 7 to 8 inches in diameter on established plants. It is an extremely free bloomer. Very desirable.
A Brand Division \$2.00.

LA LORRAINE (Lemoine). 8.6. Pink. Midseason. A large flower, nicely rounded, with great broad petals beautifully arranged. Color a soft even shade of creamy pink. In our opinion, this flower is not fully appreciated, for it is one of the choicest of all Peonies and should rate well above 9.0. From our first observation of the flower, this has been our constant impression. When shown together with magnificent blooms of Le Cygne, Kelway's Glorious, Therese and Mme. Jules Dessert, we have seen blooms of La Lorraine which showed up equally beautiful; and we think it is just as good a flower as any of them.
A Brand Division \$3.00.

LA PERLE (Crousse). 8.5. Pink. A floriferous variety with strong stems and good foliage. Guard petals a rose-pink with a slightly darker center, showing flecks of crimson. Beautiful both in the bud and open flower. An excellent variety for the cut flower trade.
A Brand Division \$1.00.

LA ROSIERE (Crousse). 8.3. White. Large flowers in clusters; straw-yellow at the center, shading to a creamy white border—this is indeed a striking variety. Pleasing fragrance. The flower is loose, showing a band of yellow stamens which light up the flower with a yellowish cast. For a garden flower it should not be disbudded. Midseason.
A Brand Division \$1.00.

LAURA DESSERT (Dessert). 8.8. Yellow. This Peony, Primevere and Fanny Crosby, are the three finest yellow Peonies. The flower is round, of rose type. Guard petals creamy white, enclosing a domelike center of pure canary-yellow. Like Fanny Crosby, the plant is an upright grower, holding blossoms erect for good landscape value. Like all yellows, it must be developed inside away from the sun to preserve its color. Early midseason.
A Brand Division \$3.00.

LE CYGNE (Lemoine). 9.9. White. A flower of true rose type, perfect in form. Creamy white with no tracings of color. Strong, medium height stems; each one produces a perfect bloom. Flowers large and delightfully fragrant. Le Cygne is the highest rated Peony and fully deserves its rating. Early midseason.
A Brand Division \$3.00.

LILLIAN GUMM (Gumm). 8.8. Pink. Late midseason. A new flower of outstanding qualities, good enough to be repeatedly singled out from hundreds of varieties in the field. Very large, globular in form, rose type, with great broad petals, and a cupped center. Color uniform apple-blossom-pink with more brilliant shadings at the base of the petals.
A Brand Division \$2.50.

LIVINGSTONE (Crousse). 8.1. Pink. A deep pink that comes into bloom just before Grandiflora. Blossoms very large, compact, perfect rose type. Center petals flecked with carmine. One of the most satisfactory of the late pink Peonies. A very fragrant variety.
A Brand Division \$1.00.

LONGFELLOW (Brand). 9.0. Red. Everyone concedes Longfellow one of the most popular red Peonies because of its distinct, fadeless color and general dependability, both for cutting and garden decoration. It is as striking in the field as in the show room. It comes into bloom early midseason. The plant has excellent foliage and strong, stiff stems. The flower is a bright crimson and is always found among the winning classes.
A Brand Division \$1.50.

LORA DEXHEIMER (Brand). 8.4. Red. To us, the splendid habit and brilliant color of this plant have exceptional merit. We first selected it from the seed bed in 1904. Each succeeding year it has grown in our esteem. Color intense flaming crimson. Early midseason. A variety that ranks with Longfellow. From all parts of the country, we have reports of the wonderful qualities of Lora Dexheimer.
A Brand Division \$1.00.

LORCH (Goos & Koemann). 8.7. White. The outer petals are very large, pure snow-white, incurving over a pale lemon and cream center, with pale crimson tracings on edge of center petals. A truly splendid Peony.
A Brand Division \$2.50.

LOVELINESS (Hollis). 8.8. Pink. Very late. Produces very large, flat, hydrangea-pink flowers; blooms of wonderful beauty. It is Hollis' best Peony. Plants tall with heavy foliage and stems strong enough to hold the immense blooms erect. The flowers, a uniform shade of pink, make wonderful show flowers.
A Brand Division \$1.00.

LUETTA PFEIFFER (Brand 1916). 8.7. Pink. Very large, semi-double, pinkish white. Foliage large and clean; stems long and stout. Immense blooms are produced in great profusion. Petals are long, broad, of great substance; a pure hydrangea-pink interspersed with just enough golden stamens to be beautifully fascinating. Blooms early.
A Brand Division \$2.00.

LUELLA SHAYLOR (Shaylor). White. Midseason. Another very fine Shaylor variety with so much yellow in the white as to give the entire flower a distinct yellow cast. Wonderfully rich in appearance.
A Brand Division \$5.00.



Le Cygne.

MADELON (Dessert, 1922). Pink. A beautiful silvery pink, among the latest of Dessert's originations. Petals imbricated and slightly touched with carmine. A splendid late variety. **A Brand Division \$5.00.**

MARIE LEMOINE (Calot). 8.5. White. Has the most pleasing and pronounced fragrance of any Peony. A sulphur-white, occasionally showing a carmine tip. One of the most beautiful of all Peonies. Very late; it should be in every collection. **A Brand Division \$1.00.**

MARIE CROUSSE (Crousse). 8.9. Pink. A very attractive flower. Color very delicate shell-pink bordering on salmon; stiff, upright stems. Fragrant. Midseason to late. A splendid variety, distinct in color from any other pink you may have. A most desirable sort for distant effect. Such a clear pure self color—it attracts the eye, even when blooming among a hundred different pinks. **A Brand Division \$1.00.**

MARIE JACQUIN (Verdier). 8.3. White. A midseason flower with purest white guards; then a collar of yellow stamens surrounding a row of shorter pure white petals, then a tuft of yellow stamens, giving the flower a pronounced waterlily effect. One of the most dainty Peonies in the list. The stems are erect, a clean, light green, as is also the foliage. The flower is semi-double, held perfectly erect, and on young plants it often comes a beautiful single. **A Brand Division \$1.00.**

MARTHA BULLOCH (Brand). 9.1. Pink. Very tall, very large, late. One of the greatest of all Peonies. We must judge Peonies not alone by individual taste but by performance over a long period. The great Peonies receive the awards at the large shows. The Northwest Peony Show is staged alternate years in St. Paul and Minneapolis. Outside of the National Show, it is the largest Peony Show in America, taken year after year. Here Peonies from all varieties are shown at their best by expert showmen. The class that brings out the best flowers is the class that calls for ten vases, one each of ten varieties, three blooms to a vase. Into this class go the ten best vases of each exhibitor. Martha Bulloch is almost invariably in the exhibit that wins first. Bright old-rose-pink; center of lighter rose, and pink. Roselike fragrance. Tall, straight stems. Immense blooms. The most beautiful Peony of its size. **A Brand Division \$2.00.**

MARY BRAND (Brand). 8.7. No red Peony ever won favor so quickly as Mary Brand. Always found among the winning reds in every show room. Comes into bloom with Frances Willard. Color so distinct, it is easily recognized by amateurs, no matter how often they see it in our fields. A rose type Peony showing stamens. A red in which there is little trace of purple. One of the most satisfactory reds as a cut flower as it will last a week and hold right up stiff, if cut in the bud. **A Brand Division \$1.00.**

MARY WOODBURY SHAYLOR (Shaylor). 9.0. Pink. A very large flower of most refined beauty, borne erect on very strong, dwarfish stems. Outer petals are a delicate light shell-pink; central petals a yellowish creamy white tinted salmon. Very fragrant; a most beautiful sort. Midseason. **A Brand Division \$2.00.**



Martha Bulloch.

MIDSUMMER NIGHT'S DREAM. A large late midseason flower with guards and crown delicate blush white, the latter marked with a few crimson edges; collar pale canary-yellow; moderately fragrant. **A Brand Division \$1.50.**

MILTON HILL (Richardson). 9.0. Pink. A very beautiful flower of a delicate shade of salmon-pink, resembling Walter Faxon. Seen in the show room in first class form, this variety is impossible to beat in its color. It received a rating of 9.0 with sixty-three voting. We can never supply the demand for roots. To obtain Milton Hill, you should reserve stock of this variety early. **A Brand Division \$2.00.**

MIRIAM (Chase, 1916). A splendid rose type Peony of a distinct and very pleasing shade of medium pink. One of the newer Peonies that is really good. **A Brand Division \$2.00.**

MRS. J. H. NEELEY. A very fine pink of splendid form that was outstanding in our fields last year. It looks to us like a real addition to our list. Both color and form are of the best. **A Brand Division \$10.00.**

MONT BLANC (Lemoine). 8.4. The stocks of this variety have been badly confused. Many do not have the genuine. We have incurred much expense to true up our stock so we know we have only the genuine. Milk-white with center slightly tinted rose. Large, very compact, globular flower, borne on stiff, medium height stems. Very fine. **A Brand Division \$1.50.**

Mlle. LEONIE CALOT (Calot). 8.1. Pink. Typical rose type. Very delicate rose-white, center of deeper shading, slight carmine tips. Fine form, medium height, rather spreading habit. Late midseason. A great favorite with many. **A Brand Division \$1.00.**

MME. AUGUSTE DESSERT (Dessert, 1899). 8.6. Rose. Very large flower, semi-rose type. Uniform violet-rose, petals slightly flecked crimson. Erect, medium height, free bloomer. Early midseason. **A Brand Division \$1.00.**

MME. DE VERNEVILLE (Crousse). 7.9. White. We feel this variety is much underrated. Flower large, very full, bomb type. Guard petals sulphur-white; center petals rose-white with carmine touches. Good substance. Stems long and strong. An ideal cut flower. Pleasing fragrance. Comes into bloom after Festiva Maxima, and we regard it superior in beauty. **A Brand Division \$1.00.**

MME. EMILE GALLE (Crousse). 8.5. Pink. Blooms of this variety are large, compact, flat rose type. Color, delicate sea-shell-pink with touches of heliotrope and lavender. Strong, medium tall plant; a free bloomer. Extra fine in the bud. Comes into bloom with the very late ones of which it is one of the best. Often mistaken for Tourangelle. **A Brand Division \$1.00.**

MME. EMILE LEMOINE (Lemoine). 8.9. White. A rare, beautiful Peony; strong grower, free bloomer. Flowers very large, uniform in shape and size. Plant rather tall with strong, erect stems. Bloom is very perfect in form, with large, rounded roselike petals of a tender glossy white, overlaid with a sheen of delicate satiny pink, covered with tiny dots of deeper pink. Petals of great substance. **A Brand Division \$1.00.**

**Make Up
Your Own Collection**

*Choose Just the Varieties
You Wish*

Select any ten \$1.00 roots from
this general list.

A \$10.00 Value for Only

\$7.50

No Discount

MME. GAUDICHAU (Millet). 8.8. Red. Strictly a first class red. Very dark crimson, it resembles M. Martin Cahuzac, although it's a much prettier plant. Flowers are large, loose, and stand the sun remarkably well. Late midseason. Stems are red; foliage both in the spring and again in the fall is of dark reddish color.
A Brand Division \$2.00.

MME. JULES DESSERT (Dessert). 9.4. Pink. One of the finest of all Peonies—flowers very large, well formed, with long, broad petals. Blooms held rigidly erect on good straight stems of medium height. Color a creamy white, lighted with buff and salmon shades. A few golden stamens appear to beautify an already beautiful flower. Always among the main prize winners at the great shows.
A Brand Division \$1.50.

MONSIEUR DUPONT (Calot). 8.3. One of the old standard Peonies, always desirable. A glistening ivory white, with center petals bordered with carmine. Golden stamens mingled with the petals throughout the flower. Deliciously fragrant, wonderfully prolific, a consistent bloomer. Appears just before Couronne d'Or.
A Brand Division \$1.00.

MONS. JULES ELIE (Crousse). 9.3. One of the largest, most beautiful Peonies; in fact, the largest of the globe type varieties. An immense self colored flesh-pink, shading a trifle deeper toward the base of petals. Great prominent broad guard petals enclose an immense ball of incurved narrow petals of the same color, all covered with an intense silvery sheen.
A Brand Division \$1.00.

MONS. MARTIN CAHUZAC (Dessert). 8.8. A shade darker than Midnight or Prince of Darkness. If you wish the darkest red Peony grown, order this one. Flowers medium to large, rose type, with stamens. Color a deep maroon-red. One of the most earnestly sought Peonies.
A Brand Division \$1.50.

MRS. A. G. RUGGLES (Brand). 8.3. Pink. Resembles Therese. When grown in the same row and in bloom at the same time, critical visitors have taken all the plants for Therese. Mrs. A. G. Ruggles should be disbudded to give the best blooms. In an occasional year, this variety is disappointing; then other years it is simply wonderful. In 1926 it was the finest flower in our entire fields.
A Brand Division \$1.50.

MRS. SHAYLOR FORCE (Shaylor). 9.0. A very large, midseason, creamy white with a faint glow of pale lemon at base of petals.
A Brand Division \$2.50.

NANCY DOLMAN (Vories). 9.1. Rose-pink. Large, late, rose-pink with fluffy petals, becoming pinkish white in center. Plant tall, robust, and floriferous. Stems strong and foliage good.
A Brand Division \$5.00.

ODILE (Doriat). A new variety sent out by Doriat. In coloring it resembles Tourangelle, but a much better grower. An extra fine new one.
A Brand Division \$10.00.

OFFICINALIS RUBRA. 8.6. Red. Large, round bloom of vivid crimson. The deep bright red Peony of olden times. Earliest of all good Peonies. Very desirable in this latitude; often in bloom on Memorial Day. The red "piney" of our grandmothers' gardens.
A Brand Division \$1.00.

OPAL (Pleas). 8.5. Pink. Guard petals a delicate pink, fading to white; the center is opal-pink. Tall vigorous plant; profuse bloomer. One of the daintiest and most beautiful of all Pleas' Peonies.
A Brand Division \$1.00.

PARADISE (Hollis). 8.7. Very large, compact flat rose type. Guard petals hydrangea-pink. Center lilac-white fading to milk-white. Fragrant. Medium tall. Free bloomer. Early midseason.
A Brand Division \$2.00.

PERETTE (Dessert). 8.3. White. A beautiful flower borne in clusters. White, slightly tinged flesh and straw-yellow. Pleasing fragrance. A variety that must be seen to be appreciated.
A Brand Division \$2.00.

PETER PAN (Hollis, 1907). 8.6. Double type; large; late. Irregularly cupped flowers of bright old rose, opening flat, showing a fluffy center of yellow stamens mixed with long, shaggy petals, a few of which are edged red; moderate rose fragrance. Average height; floriferous; stiff, wiry stems. Foliage small and glossy.
A Brand Division \$1.00.

PHILIPPE RIVOIRE (Rivoire). 9.2. Red. Very fine bright crimson. Beautiful form, splendid in plant growth; most fragrant of the reds. Midseason. A fine show flower. No stamens. Most distinct in color of all the reds; not bright like Mary Brand or Longfellow yet it shows an absence of the purple which is so objectionable to some. The extremely beautiful form and uniform soft color make a flower loved by all who see it. The true stock is very scarce; much spurious stock is on the market but ours is absolutely true.
A Brand Division \$5.00.

PHOEBE CARY (Brand). 8.8. Pink. Much like Martha Bulloch. Introduced in 1907, it met such quick demand that our stock was almost gone before we knew. What we had for sale last year was gone before the season was over, and we were obliged to refund on late orders. A true rose type. Petals large, broad, of good substance, slightly cupped. Color a beautiful rose-pink with center slightly deeper in shade. Pleasing fragrance. Late in season with Marie Lemoine. Tall plant; abundant clean, light green foliage.
A Brand Division \$2.00.

PHYLLIS KELWAY (Kelway). 8.8. Pink. Very large, loosely built, of the most exquisite beauty. Color deep lavender flesh with long rays of lighter lavender playing the length of the petals through the deeper colors. A row of broad petals surrounds a loosely built cup-shaped center of long narrow petals intermingled with conspicuous yellow stamens. Long, stiff stems hold blossoms erect—a gorgeous beauty in the rays of sunlight—one of the most brilliant and striking Peonies in the list.
A Brand Division \$4.00.

PIERRE DUCHARTRE (Crousse.) 8.2. Pink. Beautifully formed globular flower, often mistaken for La France. Beautiful symmetrical form with great broad rounded petals; true rose type. Color a pale lilac-flesh with glossy reflex, bordered with silver. We have always felt this Peony was not being fully appreciated and we believe it is much underrated. It is in a class with Reine Hortense, Livingstone, La Perle, etc.
A Brand Division \$1.00.

PRESIDENT WILSON (ThurLOW). 9.3. Pink. A large flower, on very stout stems of medium length. A very pleasing soft pink changing to shell-pink, the guards sometimes showing crimson markings. Asked to examine a private show of wonderful Peonies staged by Mr. E. C. Shaw, I was asked to pick out the best vase of flowers without looking at the labels; and my choice was a vase of President Wilson. One of the great Peonies.
A Brand Division \$5.00.

PRIDE OF ESSEX (ThurLOW). 8.9. A delicate light pink, blooming in midseason. Tall plant, vigorous and free blooming. Large, loose, rose type flower—a very fine variety.
A Brand Division \$2.00.

PRIDE OF PAULDING (Neeley 1920). 8.6. A rich flesh-pink creamy in the collar and all petals slightly greenish at the base, strong heavy stems. Fragrant.
A Brand Division \$5.00.

PRIMEVERE (Lemoine). 8.6. A fine yellow Peony. Guard petals creamy white, enclosing a central ball of sulphur-yellow. If cut in the bud, as it begins to open, so the flower may develop away from the sun, it will hold a clear yellow color, very beautiful.
A Brand Division \$1.50.



Sarah Bernhardt.

RAOUL DESSERT (Dessert). 9.0. Pink. Large, globular, high built, with long broad petals. Flowers perfect in form with pleasing fragrance are borne on tall stout stems. Color much like Walter Faxon and Souv. de Louis Bigot only more brilliant with shadings more marked. A much better plant and performer in the field than either. **A Brand Division \$3.00.**

REINE HORTENSE (Calot). 8.7. Pink. A show flower usually found in the winning classes. Sometimes sold under the name of President Taft. Tall growing, it produces lots of large perfectly formed flowers on long, stiff stems. Color a uniform hydrangea-pink, minutely splashed on a white background; also prominently flecked with crimson. Truly a wonderful flower—we can seldom supply the demand. **A Brand Division \$1.00.**

RICHARD CARVEL (Brand). 8.8. Red. An early crimson parallel to the pink Mons. Jules Elie. With its extra early blooming qualities, large size, and splendid habits, this variety is already a well-established favorite. The demand is increasing so rapidly, we advise you to order early. A single plant on the lawn is attractive and delightful, beautiful and lasting. A valuable cut flower. The best of all early dark reds. Unlike most reds, the odor is pleasant and pronounced, a very rare quality in the reds. **A Brand Division \$1.50.**

ROSA BONHEUR (Dessert). 9.0. Pink. A very fine mid-season flower. Color, light violet-rose with guard petals flecked crimson. Erect, medium strong grower. Flowers are large, flat, of rose type. Here is one of the extremely beautiful Peonies. Do not overlook it. **A Brand Division \$2.00.**

ROSETTE (Dessert). 8.8. Pink. Pretty flower of fine shape like a Captain Christy rose, silvery flesh shading to a salmon at base of petals and flecked crimson on the edges. A splendid variety of erect habit. **A Brand Division \$2.00.**

SARAH BERNHARDT (Lemoine). 9.0. Pink. Another variety that prevails in the show room. So well known, it seems unnecessary to say that it should be in every garden. Semi-rose type. Late midseason. Color, apple-blossom-pink with each petal silver tipped. Agreeable fragrance. **A Brand Division \$1.00.**

SARAH K. THURLOW (ThurLOW). 9.1. Pink. A large, very late, delicate pink with coloring similar to Tourangelle. The stems are long and slender but support the flowers well. Fragrant. **A Brand Division \$5.00.**

SOLANGE (Lemoine). 9.7. Pink. Color a deep orange-salmon, or Havana-brown at the heart, overlaid with a delicate, tender, rich cream. Rose type. Midseason. A splendid variety. **A Brand Division \$2.00.**

SOUVENIR DE LOUIS BIGOT (Dessert). 9.1. Salmon-pink. Color a brilliant rose, slightly tinted carmine at the base, turning to a salmon-pink. Resembles Walter Faxon in color but stands up much better in the field. **A Brand Division \$2.00.**

STRASSBURG (Goos & Koenemann). 8.4. Pink. Rose. Very large bloom; exquisite form. Flowers very large, loosely built, semi-rose. Petals very large, broad, delicate lilac-rose. This German firm has sent out many beautiful Peonies, all distinct, but in their entire list this is one of the best. Stock of this variety is very scarce. **A Brand Division \$2.00.**

THERESE (Dessert). 9.8. Pink. Very large; somewhat loosely built; long, narrow pointed petals. Plant of medium height with strong stems. Usually produces large typical flowers, even on 1-year plants, if they are allowed to bloom. Early midseason pink, fading toward the center, and illumined by a golden yellow glow in the depths. A supreme flower for exhibition purposes. **A Brand Division \$2.00.**

SUZETTE (Dessert 1912). 8.2. Rose. A pretty flower of fine shape. Bengal rose. Slightly tinted carmine-purple. Petals interspersed with golden stamens. Strong habit. **A Brand Division \$2.00.**

SPLENDIDA (Kelway). 8.3. Pink. Tall, very strong stems bear large, globular blooms of deep rose-pink, slightly tinted lilac. Very fragrant. On account of its strong habit we recommend it as a "landscape variety." Midseason to late. Some seasons this is one of the most marvelous landscape varieties that we know of. **A Brand Division \$1.00.**

TOUBANGELLE (Dessert). 9.4. Pink. Rose type; late midseason; a vigorous grower, bearing large high-built flowers with cupped centers. Color delicate pearly white, suffused with shades of delicate salmon and La France rose. In discussing which are the very best Peonies, we never hesitate to place this one among them. **A Brand Division \$1.50.**

VENUS (Kelway). 8.3. Pink. Especially good as a cut flower. Both buds and foliage are clean. Flowers of medium size; compact; pale hydrangea-pink. Large petals. Tall growing; a very free bloomer. **A Brand Division \$1.00.**

VICTOIRE DE LA MARNE (Dessert). 8.2. Red. Mid-season: a large, globular flower; brilliant dark crimson with a silver reflex; intense in color, very striking. A loosely formed flower with strong, vigorous stems. No matter what critics may say of the color, this flower is one that always attracts much attention both in the field and show room; it is almost universally admired. **A Brand Division \$1.50.**

WALTER FAXON (Richardson). 9.3. Pink. A remarkable flower, at its best in the show room. Cut in the bud, held in a dark cool room for a day or two, then brought into the light, it develops as a flower of wonderful coloring and exquisite beauty. Color the most vivid of all pinks, the only "real pink" as someone has said. To anyone acquainted with its color, a mere glance over the show room will disclose every vase of this beautiful flower. Flowers medium size, attractive in form. In the fields it does not hold up as well as Souv. de Louis Bigot, to which it is similar in color. Unique for show purposes or home decoration. **A Brand Division \$2.00.**

WIESBADEN (Goos & Koenemann 1911). 8.2. Semi-rose type. Flesh-white and light rose; intermingled golden stamens. Free bloomer. **A Brand Division \$2.00.**

W. F. CHRISTMAN (Franklin). 8.8. Pink. A beautiful flesh-pink. Flowers of fine form, rose type, very large, and double. Fragrant. **A Brand Division \$2.50.**

WINNIFRED DOMME (Brand). 8.3. Scarlet-red. No matter how many good reds you have, you will still want Winnifred Domme. Unlike most reds, it has practically no purple; the nearest scarlet of all Peonies. The plant is dwarfish, but stems are strong and erect, each producing a single bloom. In the next symposium, we believe this variety will be rated 9.0 or better. **A Brand Division \$1.50.**



Walter Faxon.

Good Single Peonies

Few people are familiar with the beauty of the single Peony. For both house decoration and garden effects, the single Peony has an artistic value different from the double form. The main bud opens first; but before it has passed its prime the lateral buds also open, making the plant a mass of bloom. They come into bloom at least a week before the earliest doubles. This lengthens the Peony blooming season. We have greatly reduced our prices on singles, and we now offer the very best of the single varieties at low prices.

ALBIFLORA (The Bride). (Dessert, 1902). 8.4. White. Very large. Long, yellow stamens. Tall, fragrant, very early. Free blooming in clusters.

A Brand Division \$1.00.

DARKNESS (Brand, 1913). 8.2. Red. Large; very dark maroon with darker markings in lower half of petals, surrounding a bold cluster of golden stamens. Tall, strong stems. Good bloomer. Very early.

A Brand Division \$2.00.

DEPARTING SUN. Red. There are two Peonies of this name; one a single, the other a Japanese. This is the single. A bright attractive red. The petals, of great substance, hold up well after cutting. Very striking.

A Brand Division \$3.00.

EDITH WEST (Brand, 1920). White. Resembles Albiflora but comes into bloom later. The flower is not quite as large but the petals have more substance than Albiflora and better plant habit.

A Brand Division \$2.00.

FLANDERS FIELDS (A. M. Brand, 1928). Red. Ten years ago in one of our seedling beds of many varieties, we noticed a most conspicuous red. Even from 20 rods' distance, this brilliant color stood out from all the others. Every year, in every way, it has proven a splendid flower. A single of the most brilliant red. Two rows of petals surround a large prominent center of golden stamens. Petals of great substance stand out flat; rich and velvety in appearance.

A Brand Division \$5.00.

HARRIET OLNEY (Brand, 1920). Pink. Flowers large; petals long, broad and shapely. Color a soft rose combined with attractive prominent yellow center. Very early.

A Brand Division \$1.00.



Krinkled White.

HOGARTH (G. & K.). A tall, vigorous plant producing in great numbers very large lavender-pink, single flowers of splendid form and substance. The great blooms are held well erect. A very fine single.

A Brand Division \$1.00.

KRINKLED WHITE (A. M. Brand, 1928). White. First noticeable in the bud which resembles the bud of a pale pink Tulip just ready to burst. The bud is comparatively small and beautiful in effect. As it opens, it expands into a large flower with great broad, pure white petals, crinkled like crepe paper. Stems tall, straight, slender but strong; clean light green. Award of merit, Des Moines National Show.

A Brand Division \$3.00.

L'ETINCELANTE (Dessert). 8.4. Dark pink. Very large flowers; decidedly cup-shaped; great broad petals of deep bright pink, heavily margined with silver; a large center of bright yellow stamens.

A Brand Division \$1.50.

MADÉLINE GAUTHIER (Dessert). 8.5. Light pink. Early midseason. Dessert is noted for his singles. This is a good specimen; a beautiful flesh-pink of most perfect form.

A Brand Division \$3.00.

MAFEKING (Kelway). 8.2. Very large; midseason; smooth, cupped guards of dark ruby-red; center a great tuft of golden stamens with ruddy filaments; carpels nearly white. Wild mintlike fragrance. Tall; free blooming; bright dark red.

A Brand Division \$3.00.

MARGUERITE DESSERT (Dessert, 1913). 8.5. Pale pink. Medium size flower. Petals similar to the double, Asa Gray. Central tuft of golden stamens. Very desirable.

A Brand Division \$3.00.

MELLEN KNIGHT (Brand, 1920). Red. Tall, straight growing; strong enough to hold the flowers well up. Petals long, narrow, and evenly rounded on the edges, giving a beautiful effect both at close examination and from a distance. Color a bright rich crimson. Extra good.

A Brand Division \$1.00.

NOONDAY. A very attractive rose-pink.

A Brand Division \$2.00.

PERLE BLANCHE (Dessert). 8.4. Large, early mid-season. Very valuable for landscape effect because of its erect habit and lovely white flowers in beautiful contrast with an immense central cushion of golden stamens.

A Brand Division \$2.00.

PRESIDENT LINCOLN (A. M. Brand). Too new to be rated. The great red single. Of the many single reds that we have tested out, this is unquestionably the best. A tall variety with strong, stout stems. Flowers large for a single, held straight up. Two rows of brilliant red petals, of most perfect form and the greatest substance, surround a very striking center of rich yellow stamens. Holds its color well in the sun.

A Brand Division \$10.00.

PRIDE OF LANGPORT (Kelway, 1909). 8.9. Pink. An immense flower of brilliant, soft peach-pink. Wonderfully beautiful; retains its color in the sun almost a week after it opens; the finest light single.

A Brand Division \$3.00.

PURE LOVE (Kelway). A very fine white.

A Brand Division \$2.50.

SCHWINDT (Goos & Koenemann). Not yet rated. Pink. Blooms in clusters. Large, silvery pink, beautifully formed. Excellent for landscaping. Stock scarce.

A Brand Division \$1.50.

WATTEAU (Goos & Koenemann). Not yet rated. White. Large, snow-white guard petals. Center flesh with a mass of golden stamens. Resembles Albiflora, the Bride, but comes into bloom much later.

A Brand Division \$2.50.

Four Choice Singles

A Real Value for Your Money

Harriet Olney	\$1.00
Krinkled White	3.00
Mellen Knight	1.00
Schwindt	1.50

A \$6.50 value,
Postpaid for

\$5.00

Japanese Peonies

There exists a great deal of confusion as to what is a Japanese Peony and wherein this type of Peony differs from the single. The single Peony consists of either one or two rows of guard petals enclosing a tuft of yellow stamens.

The Japanese Peony consists of either one or two rows of guard petals enclosing a tufted center of narrow petaloids of various colors, or of narrow petals edged with remnants of anthers.

Both the singles and the Japanese types are earlier than the doubles and are also more artistic than the doubles for decorative and bouquet work.

AKASHIGATA (Japan). Bright rose. A new Japanese variety not yet rated. After growing it about five years we consider it very satisfactory. Guard petals a bright rose, surrounding a heavy center of filamental petals of bright pink bordered with gold.

A Brand Division \$2.00.

AKALU. A rich dazzling carmine with center petaloids heavily bordered gold.

A Brand Division \$2.00.

ALMA (Shaylor). 8.5. Pink. Guard petals a delicate pale pink, enclosing a mass of incurved petals.

A Brand Division \$1.00.

ALTAR CANDLES (Pleas). 8.0. Flesh pink. Very nicely shaped; an evenly formed row of delicately colored flesh-pink petals, surrounding a center of completely transformed narrow filamental petals which open cream-white. Very floriferous; one of the most dependable Japanese Peonies.

A Brand Division \$1.50.

AMA-NO-SODE (Japan). 9.2. Very large. Midseason. Flower has two rows of long widespread petals of rose-pink, forming a saucer-like cup about an immense center of long yellow staminodes with flattened, crinkled tips, stained with rose.

A Brand Division \$4.00.

AUREOLIN (Shaylor). 8.9. A single row of broad guard petals surrounds a center of fully transformed petaloids of deep sulphur-yellow. This variety holds its color well in the sun and if you are looking for a good Japanese Peony you will be pleased with Aureolin.

A Brand Division \$1.00.

EXQUISITE (Japan, 1912). 8.9. White. A large row of pure white guard petals surrounds a large center of white filamental petals bordered with yellow. A splendid variety.

A Brand Division \$3.00.

FLAMBOYANT (Japan). 8.5. Violet-crimson. Large. Very evenly shaped petals. Color just a trifle lighter shade than King of England. Center filled with partially transformed staminodes, light yellow edged with gold and red. Also known as Kameno-Kerogoma.

A Brand Division \$1.50.

FUYAJO (Japan). 9.2. The highest rated dark Japanese Peony. Rich, dark, mahogany-red petals surround a full center of broad petaloids of the same dark rich color as the outer petals.

A Brand Division \$3.00.

IROKA. A beautiful blush white, with two rows of petals. Pure yellow, compact center. A choice and extremely scarce variety. The plant itself of this variety is very beautiful.

A Brand Division \$5.00.

KING OF ENGLAND (Kelway). 8.6. Red. A rich uniform shade of deep red. Large, uniformly rounded petals of great substances. Center a large tuft of long, self-colored petaloids, prominently edged with gold.

A Brand Division \$1.50.

MIKADO. 8.6. The Peony shown at the Chicago World's Fair in 1893 by the Japanese Government. A rich red with long, rounded petals of brilliant red surrounding a great dome of golden staminodes. Exceedingly brilliant.

A Brand Division \$1.50.



Toro-No-Maki.

MRS. MAC (Franklin). A splendid Japanese Peony brought out by Mr. Franklin. Very strong plant, covered with delicate pink typical Japanese blooms, flushed and flecked with deeper tones of pink.

A Brand Division \$2.50.

OHANAGASA. Origin of this Peony is not known, but it is a splendid violet-red.

A Brand Division \$2.00.

OKI-NO-NAMI. A beautiful hydrangea-pink. A new color in Japs.

A Brand Division \$1.50.

PRINCESS DULEEP SINGH (Kelway). 8.7. Broad guard petals of a soft shade of deep wild rose. Center a spherical tuft of rose and gold staminodes.

A Brand Division \$3.00.

RASHOOMON (Japan). 8.7. One of the best of the Japanese varieties for landscape planting, because of the clean beautiful appearance of the plant itself. Large blossoms. Color a deep rose-red. Center prominent cream-yellow.

A Brand Division \$3.00.

SURUGU. Pure red. Two rows of rounded petals which hold their form well as the flower ages. Thick yellow petaloids. A beautiful, neat flower. New.

A Brand Division \$5.00.

TAIHO (Japan). A new variety from Japan, not yet rated. Broad guard petals of clear, delicate pink with a central tuft of creamy staminodes.

A Brand Division \$1.00.

TORO-NO-MAKI (Japan). 9.0. White. One of the finest of all the Japanese Peonies. It comes into bloom mid-season. A double row of lilac-white guard petals surrounds a center of amber-yellow. A very striking variety in the field and as a cut flower.

A Brand Division \$5.00.

TORPILLEUR (Dessert, 1913). 8.0. Rose-red. A large, fine flower, held rigidly erect on long, stiff stems. The guard petals are deep rose-red with center petals of the same color tipped with cream. A splendid variety, distinctly different from all other Japs.

A Brand Division \$2.00.



Good Garden Peonies at Attractive Prices

WE GUARANTEE the following list of Peonies to be the very best of the older standard varieties. These Peonies are all cut into large **BRAND DIVISIONS**. Every root will be labeled and true-to-name. We have condensed our catalog this year and haven't room for long descriptions.

This list should appeal to those who wish to grow Peonies for the cut flower trade in their home town. All of these varieties are prolific bloomers. There are early, midseason, and late kinds in the list to prolong the blooming season. Note our special offer if you wish to purchase in quantity.

RED VARIETIES

- Ben Franklin.** A very tall dark red. A profuse bloomer. Good landscape variety and splendid local cut flower.
- Chas. McKellip.** A late midseason red. A most excellent variety. Buds unusually large and fine.
- H. F. Reddick.** A midseason, very prolific bright red. An excellent flower.
- Midnight.** A very early dark red, often called the Black Peony.
- Old Silver Tip.** Late midseason, deep rose-red with edge of petals silvery white.
- Prince of Darkness.** Early rich dark maroon-red.
- Rachel.** An excellent free blooming midseason garnet-red.
- Rubra Superba.** Prolong your blooming season with this very late fragrant red.
- Shenandoah.** Another late very fragrant red. Will give you blossoms when most other varieties are gone.

WHITE VARIETIES

- Assmanhausen.** A splendid strong growing white with delicate pink tintings. Late.
- Duchesse de Nemours.** A most excellent early creamy pure white. Shadings of green at base of petals.
- Festiva Maxima.** Among our highest rated early whites. Pure white flecked crimson.
- Florence Nightingale.** An excellent fragrant white that blooms with the very latest varieties.
- Mme. Crousse.** A uniform pure white coming into bloom midseason.

LIGHT PINK VARIETIES

- Albert Crousse.** An outstanding late midseason shell-pink.
- Asa Gray.** A midseason salmon-pink with petals minutely dotted with deeper pink.
- Chestine Gowdy.** A very late light pink with layers of rich creamy petals between rows of pink ones. Petals flecked crimson. A good late flower.
- Louisa Brand.** Very late blush pink. A variety you will like.
- Marguerite Gerard.** An immense flesh pink showing golden stamens. Midseason.
- Philomele.** Bright rose guard petals surround a center of amber yellow petals. A striking landscape sort.
- Umbellata Rosea.** A very early light fragrant pink.

DEEPER SHADES OF PINK

- Archie Brand.** A midseason deep seashell-pink with a silvery border.
- Gigantea.** Early rose-pink, tipped silvery white, spicy fragrance.
- Lafayette.** An early salmon-pink with a silvery reflex.
- Mme. Ducel.** A very fine early midseason flower resembling Mons. Jules Elie.
- Ruth Brand.** A good early pink. Fine cut flower sort.
- Splendida.** A tall, deep rose-pink, slightly tinted lilac. Fragrant. Midseason to late.

PRICES POSTPAID

Any 1 of the above for	\$0.60
Any 3 of the above for	1.25
Any 6 of the above for	2.25
Any 12 of the above for	4.00

PRICES FOR QUANTITY BUYING

If you are interested in buying any of these Peonies in quantity for cut flower trade, write us for special prices.

OUR MAILING LIST

We send our catalog, both for spring and fall, regularly year after year, to those who purchase from us. If you do not receive your copy, always write us.

Catalogs are expensive. We send out both a spring and fall catalog to those who inquire for it, and if we do not receive an order after sending out the two books, we take it for granted that you are not interested and withdraw your name from our list. However, if we drop your name and you wish a third catalog, write for it.

Select Iris

Why the Iris is So Popular

Nowadays every garden must have Iris. There are many reasons for the growing demand. In the first place, Iris are as beautiful as the rarest orchids; their form perhaps more distinctive, their coloring more varied. During recent years, many new varieties have appeared with wonderful new combinations of color. One may now enjoy all shades; from the palest lavender to the deepest purple, from the most delicate cream to the deepest gold. With pure white, delicate blue, deep blue, pink, rose, maroon and bronze—now, more than ever, the flower justifies its name, Iris, "The Rainbow."

There are also practical reasons why the Iris is so popular. It is inexpensive. New varieties are produced so quickly and they multiply so rapidly that even the recent varieties do not long remain expensive. Large stocks of the good old sorts are very cheap. Moreover, Iris blooms quickly. Plants set out this year will blossom next, and they soon form large clumps. The rules to follow are few and easy:

Cultivation. Iris should be planted in a sunny location; and in dry, well drained soil. Unlike the wild flag, garden Iris cannot stand water around the roots. Do not plant deep. The bulb or rhizome should be just below the surface. Spread out the roots and pack the soil around them. No fertilizer should touch the rhizomes. A very little well-rotted manure may be applied to the surface of the ground. Bone meal and finely ground limestone are good.

Suggestions. The sunny side of a shrubbery hedge is a good place for Iris. Unlike the Peony, it is not likely to be robbed of moisture and food by the larger plants. It is especially beautiful with Lilacs or Spirea Van Houttei as a background. All these bloom at once. The colors of the Lilac harmonize with the Iris, and both contrast beautifully with Spirea white.

As suggested in connection with Peonies, Iris is a good companion for Peonies in a hedge which borders a walk or drive. First the two flowers may be alternated; later, when the Peonies need all the space, the border may be widened and the Iris moved to the front.

Clumps of Iris are useful to give color in a border of herbaceous plants. After the blooming season the ragged tops of the leaves may be trimmed off so the foliage of surrounding plants will partially cover them.

For large grounds, extensive plantings of Iris give wonderful effects. It may be planted in beds as borders of walks, drives or pools. Beds may be arranged also to form an Iris garden—a month or more of joy.

Best results are obtained by planting groups of one variety together, so arranged as to harmonize with each other. For this reason, we offer a very low price on three of a kind.

Iris orders should be placed early for July and August shipment, if possible.

3 of any 25c Iris for 50c; 12 for\$1.50
3 of any 35c Iris for 70c; 12 for\$2.00

New Iris

Just a few choice Irises that we saw this season as we visited about among the new ones. The following appealed to our fancy and we thought they were extra fine. Consequently, we are pleased to add them to our list and offer them to our friends who are looking for good new ones.

ABELARD (H. P. Sass, 1934). Originator's description: "Intermediate. S. deep livid brown; F. veronia-purple. 26-inch branching stems." **\$5.00.**

BLACKMOOR (Jacob Sass, 1932). Originator's description: "One of the finest dark blue purples yet introduced, the deep blue effect intensified by a blue beard after the manner of Harmony. Almost black when newly opened, lightening to blackish violet of uniform coloring. A free bloomer of great size." **\$4.00.**

BLACK WINGS (Kirk, 1931). A large, heavy textured flower of a deep midnight blue overlaid with a frosty black luster. Vigorous, well branched and a wonderful flower. **\$7.00.**



Tuscany Gold.

CLARA NOYES (H. P. Sass, 1931). H. M. A. I. S.; A. M. A. I. S. A beautiful blending of yellow, orange and apricot that one simply cannot describe. Similar in color to the Talisman rose. **\$3.00.**

DEPUTE NOMBLOT (Cay., 1929). Received Dykes Medal. S. copper-red flushed golden bronze; F. very wide and spreading. A rich shade of claret crimson. Generally considered the finest of all Iris. 50 inches. **\$6.50.**

NO-WE-TA (H. P. Sass, 1932). Originator's description: "A pinker Midgard type of entirely different form and an Iris of exquisite coloring. S. conic arched and frilled. It is a beautiful true pink self in effect with yellow flushes at the center and edges of the falls and standards." 32 inches. **\$3.50.**

TUSCANY GOLD (Williamson, 1929). 36 inches. A distinct reddish gold; the most lovely of the "Art Gold" tones. Large standards with a little bluer tone on the falls. Haft intense gold, styles a deeper gold. Pronounced red-orange beard. **\$1.00.**

Our General Iris List

Not a Poor Variety in It



Alabaster.

distinct. Standards coppery purple; falls dark crimson-brown with heavy light brown reticulations on the haft. 20 inches. Strong grower. **25 cents.**

APHRODITE. 4 feet. A very tall growing Iris that makes a most imposing and charming garden variety. A beautiful almost self deep pinkish lavender with the base of the falls just a trifle deeper toned. The effect is most striking because of the large white halo which surrounds the delicate yellow beard. **25 cents.**

ARGYNNIS. Granted an award of merit by American Iris Society. A tall true variegata, distinct in coloring. Standards strontian-yellow, narrowly margined aniline-yellow; falls a solid, dark violet-carmine. Late midseason. 40 inches. **25 cents.**

BALDWIN. One of the largest of Iris with peculiar shaped petals which give it a very distinct and pleasing appearance. A self of a pleasing heliotrope shade that is very noticeable in the field. **50 cents.**

BALLERINE. A very popular variety in our fields. One of the old Iris that everybody likes. A blue-lavender with very large delicate lavender standards and drooping deeper lavender falls. **25 cents.**

BLUE BANNER. S. frilled light lavender blue; F. rich velvety deeper blue shading to a pale blue at the edges. A most charming new Iris. This is still the leader among the blue bicolors. **\$2.00.**

BLUE HILL. The bluest of the clear toned blue Irises. Slightly deeper toned than Sensation and larger. A perfectly branched Iris. A splendid real deep blue. **\$1.00.**

BRANDYWINE. One of the neatest and prettiest of Iris. Mr. Farr did well when he gave us this most beautiful variety. A light blue toned lavender self, with a prominent orange beard. A flower of unusually fine form. **25 cents.**

BRONZE SPHINK. A large and beautiful ruffled bronze with base of falls heavily reticulated brown. Standards cupped and beautifully frilled. A wonderfully profuse bloomer. Stems of strong medium height covered with many blooms open at once. **50 cents.**

BRUNO. A Dominion Seedling. Very large blooms; beautiful form; great substance. Standards, light purple with yellow flush at the base; falls, rich velvety deep violet. A preferred variety, now much used in producing new Iris. **35 cents.**

BUECHLEY'S GIANT. This, without any exception, was the most outstanding new Iris to bloom in our fields last year. The blooms are of the greatest size and also of the most perfect and exquisite form. The standards in the most perfect proportion form an exquisite dome to the base of the bloom formed of great nicely shaped falls. One of the finest of the blues. Reminds one in a way of Lord of June only its falls do not flop. **\$3.00.**

BUTO. A very free blooming Iris which resembles Mme. Gaudichau very much but because of a slight difference in season, is very desirable. A wonderful rich deep velvety purple of fine form. A profuse bloomer. **50 cents.**

CAMELIARD. 48 inches. A clump of this wonderful variety in the garden is a high-light, towering as it does above most varieties, with its vivid contrasting colors. Standards clear amber-yellow; falls yellow flushed light purple, and bordered yellow. One of the best of the yellow blends. **50 cents.**

AFTERGLOW. Tall soft pink or buff-gray, shading to a rich yellow through the center. A large flower of a most pleasing harmony of color. 36 inches. **25 cents.**

ALABASTER. A pure glistening white of splendid substance and finest form. The flowers are of medium size and, taken all in all, one of the very finest whites that we have. Edges slightly ruffled; beard nearly white with shadings of yellow. 36 inches. **35 cents.**

ALLIES. 24 inches. A very profuse blooming red-purple with a good deal of red in the falls. Standards lighter and showing more purple. A variety that shows much red from a distance in the field. A fall-blooming variety in some parts of the country. **25 cents.**

ALIQUIPPA. A. I. S. silver medal. Large flowers of pale massicot-yellow, with a deeper coloring in the center. A fine garden flower. Fragrant. 34 inches. **25 cents.**

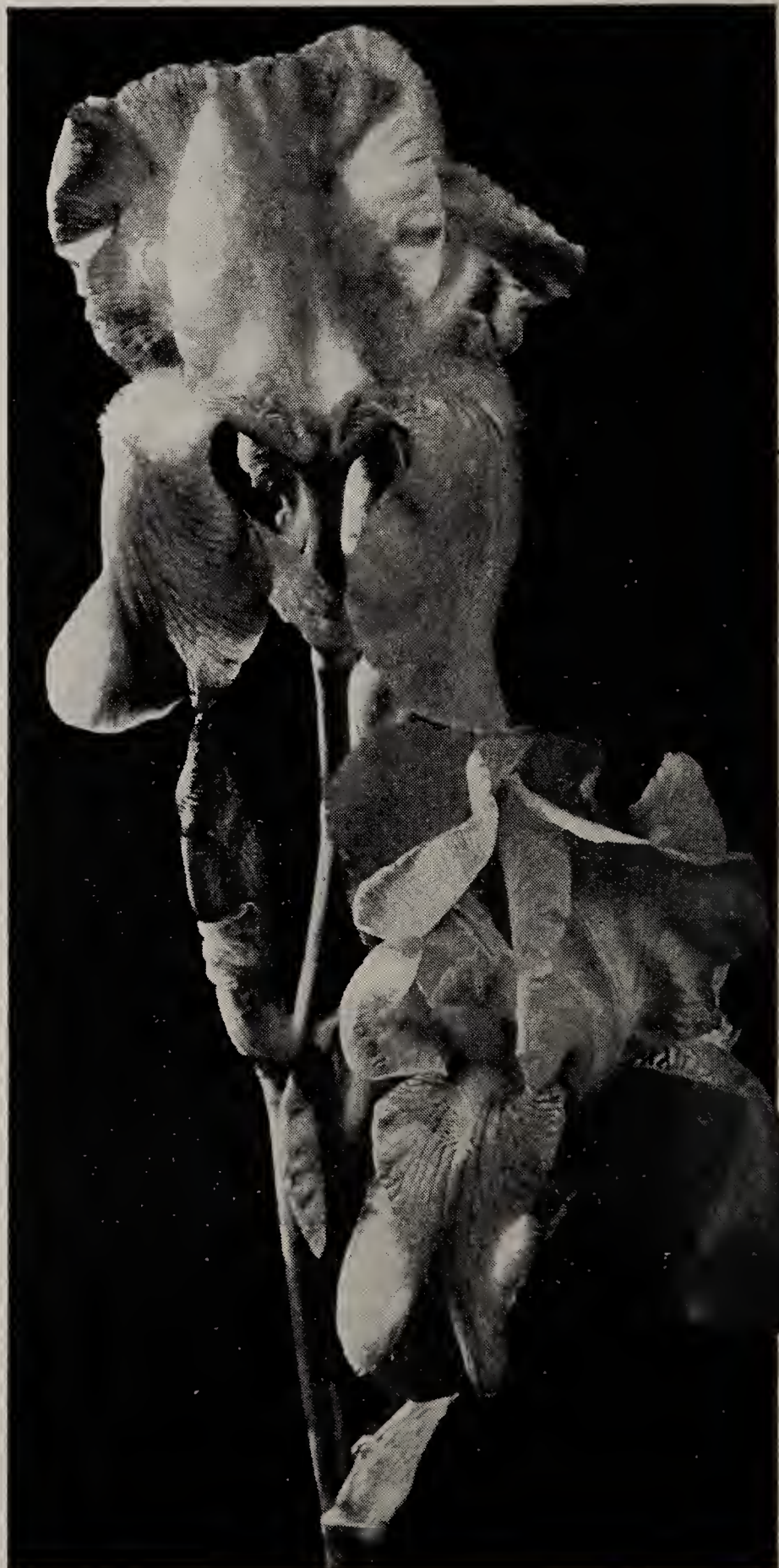
ALLURE. 40 inches. An attractive, distinct new color. Canary-yellow, overlaid with violet-pink. Silver medal English Iris Society. **35 cents.**

AMBASSADEUR (Vilm). In richness of coloring, fine form, and growing habits—truly one of the most beautiful of all Irises. Standards smoky, reddish violet. Falls dark velvety purple-maroon. Very rich. **25 cents.**

ANNA FARR (Farr). Large flower with broad petals of good substance. Standards and falls purest white flushed violet-blue. Most beautiful. **25 cents.**

APACHE. (Farr). **25 cents.**

New and interesting color, Indian-red. Very taking and distinct.



Cardinal.

CARDINAL. One of the most superb of the Dominion family. Standards, lavender overlaid with rose; falls, rich raisin-purple, very broad and rounded. Most striking; wonderfully rich. As we walked through the garden last evening viewing the different varieties that we might write more understandingly of them, we were particularly impressed with Cardinal because of its immense size, its stately carriage, the perfection of its blooms, and the wonderful substance of its petals.

50 cents.

CAROLINE E. STRINGER. Standards and falls, delicate light pink. Large flowers; petals beautifully frilled; bright yellow beard. 33 inches.

35 cents.

CASSANDRA. A rich blue-purple that is very brilliant in the field. Deep violet standards and very rich velvety blue-purple falls.

75 cents.

CHALLENGER. Standards very large, overlapping, dark purple; falls dark blackish violet. Flaring. White beard, tipped orange. One of the very largest intermediates. The coloring of this Iris is about the richest of all Iris.

35 cents.

CHALICE. A clear soft yellow, a shade lighter than Gold Imperial. A very fast grower with heavy foliage. 36 inches.

50 cents.

CHARTIER. A clear beautiful white; a large flower with smooth broad segments. Silver medal A. I. S. One of the best of the hardy whites.

35 cents.

CHASSEUR. A yellow self with broad petals. A late blooming variety which we consider an excellent addition to the yellow group.

50 cents.

CHIEF. A large royal purple intermediate. Late. 22 inches.

35 cents.

CHURCHMOUSE. 36 inches. A new and very distinct coloring among Iris. A hays-brown self. Very pretty. Nothing like it.

35 cents.

CINNABAR. A splendid tall growing flower of an intense rich blue-purple. One of the very richest of all the Irises.

50 cents.

CITRONELLA. A clear, soft yellow with the falls showing considerable brown. An unusual combination that is very popular.

25 cents.

CONCHOBAR. S. light purple; F. velvety deep reddish purple.

35 cents.

COPPERSMITH. Large flowers on tall stems. Standards crimson-purple; falls dahlia-carmine. General appearance, rich coppery red. A very rich Iris when the sun plays through the petals. 42 inches.

35 cents.

CORONADO. A beautiful Iris very similar to Asia but earlier and a bit more reddish in tone.

25 cents.

DALILA (Denis). Standards pale flesh pink; falls rich reddish crimson, shaded purple. Yellow throat, blotched brown; orange beard. Distinct and very effective.

25 cents.

DAMOZEL. A very fine-shaped plicata. Standards deeply bordered lavender. Center of the standard white heavily mottled lavender; falls a clear white heavily bordered lavender.

25 cents.

DAUNTLESS. The much talked of red Iris. Some declare it is the peer of all red Irises but we cannot quite agree with this statement. However, it is a very desirable variety, and is truly a great red. Although when it comes to what is the real red Iris, we must say that Gobelin Red, as far as color is concerned, is the real red Iris. Dauntless is a large flower of fine shape carried on a large plant. Falls an intense brownish red-purple with standards slightly lighter in tone. A very fine red.

\$1.50.

DEBUSSY. Light reddish purple falls, deep bluish lavender stamens. General effect pink. Very nice for massing.

25 cents.

DEJAH. A very tall blue bicolor. The standards just a trifle lighter in color than the falls. A fine large deep blue.

25 cents.

DELIGHT. A very delicate plicata, pure white with pinkish lavender flushed styles. Very pretty combination.

50 cents.

DOLLY MADISON. Flowers very large, often 4½ inches high by 5 inches wide. It is a seedling of Lent A. Williamson and carries the good sturdy qualities of that parent together with even greater size. An immense mauvette-lilac-pink of most outstanding quality. Without question one of the best new things.

50 cents.

DOMINION. We paid \$45.00 for our first rhizome of this Iris which we never regret. The first distinct advance in many years toward better Iris. Standards bluish violet; falls rich indigo-purple. Most perfect form, great size, gorgeous coloring.

\$1.00.

DUCHESS SARAH. A clear blue with the falls a little darker than the standards. A new Iris of much promise and it will measure up to the very best in any color.

75 cents.

DUKE OF YORK (Perry). A flower of great size, vigorous grower. Branched stems over 4 feet high. Standards broad, cupped, bluish lavender; falls drooping, same color, lit up by a bold orange beard.

25 cents.

EDGEWOOD. 45 inches. A very tall flower that stands straight up and can be seen across the field. Large flowers of good form of a rich red-purple. Standards even pink-lavender; falls bright red-purple. Splendid landscape variety.

\$1.00.

ELIZABETH EGELBERG. A strong growing, tall variety that produces an immense flower of beautiful mauve-pink with fine dome-shaped standards and large, broad falls well expanded. Standards light mauve, falls a deeper pink. Very fine. 48 inches.

35 cents.

ELSINORE. A charming primrose-yellow bordered with violet-crimson. A yellow blend that is entirely different from any other Iris and almost impossible to describe. We know you will like it in your garden.

35 cents.

ESPLENDIDO. 42 inches. A fine, large, bright red-purple bicolor. A rich flower and very much admired. Standards large, uniform red-purple; falls a deeper richer purple.

25 cents.

Your Choice of Ten Varieties for \$5.00



It is difficult to make up a collection of Iris for those who already have a large number. We are selecting an outstanding list from distinct color groups from which you may choose any 10 for \$5.00. For description, see General List.

- | | |
|--------------------|-------------------|
| Alabaster | Magna Charta |
| Baldwin | Manon Lescaut |
| Bronze Sphinx | Maori Princess |
| Bruno | Mrs. Marion Cran |
| Buto | Mrs. Valerie West |
| Challenger | Naiad Atlanta |
| Dauntless | Penn Treaty |
| Elizabeth Egelberg | Solferino |
| Gobelin Red | Snow White |
| Kansas | Yellow Moon |



Gaynelle.

FASCINATION. A beautiful pink self that looks better to one the longer he looks at it. Carries its color wonderfully well in the garden and is a splendid landscape sort. **75 cents.**

F. B. SCHERMERHORN. A lavender-blue self. Another fine Iris that shows up unusually well inside when displayed in masses. **25 cents.**

FLORIDOR. A fine medium large flower of an even shade of slate-blue throughout. A peculiar, distinct, and pleasing color, different from others. **25 cents.**

FOLKWANG. Standards light bright pink; falls claret-red with brownish yellow veinings. A wonderful blending of colors. One of the very best of the many really good Irises sent out by this famous firm. **25 cents.**

FRA ANGELICA. A striking new Iris from Vilmorin with beautiful sunset tints. Standards a medium shade of buff and falls a peculiar shade of blue gradually running into an irregular buff edge. Haft heavily reticulated deeper buff with an orange beard. **25 cents.**

FRIEDA MOHR. Good enough in the originator's opinion to bear the name of his wife. A beautiful flower both in form and color. Unusually tall with clean foliage; ideal for either mass planting or for specimen flowers. A pink bicolor. Standards a light pinkish violet; falls a deep lilac-rose. 50 inches. **50 cents.**

GAYNELLE. A large pure yellow. The largest yellow in our fields. Standards a pure bright medium yellow; falls just a trifle deeper and brighter. Highly perfumed. The best yellow we have seen to date. **\$1.50.**

GAVIOTTA. A lovely creamy white with a faint tint of yellow on the edge of both standards and falls. Beautiful form. Base of both S. and F. beautifully reticulated brown. **25 cents.**

GEO. TRIBOLET. A magnificent Iris with deep violet standards and velvety red-purple falls. 40 inches. For real quality and richness of color this is an Iris hard to beat. **35 cents.**

GERMAINE PERTHUIS. Received a special award, Paris Iris Commission. General effect purple; standards beautiful shade of violet-purple; falls deep velvety rich violet. Fragrant. Thrifty. Highly recommended. **25 cents.**

GLOWING EMBERS (Sturtevant). Standards tan, slightly flushed violet; falls rich velvety pansy-purple; conspicuous orange beard. Vigorous grower; considered one of Miss Sturtevant's finest. 48 inches. **25 cents.**

GOBELIN RED. An absolutely new color; actually ox-blood red, contrasting sharply with the known "red Iris" by complete lack of red-purple in makeup. Now used as a foundation to develop a race of fine reds. An outstanding beauty! Flowers of medium size; very finely formed and carried. Unusually long blooming period. Stems and leaves are thin, strong, erect. We have compared this variety with Dauntless, King Tut, and others of this class and we claim, as well as others who visited our fields this season that this is the best red for color yet offered. **\$2.00**

GOLD CREST. From the name one might think this a yellow Iris but it is a beautiful medium blue. It has a prominent gold beard. **25 cents.**

GOLDEN GLORY. Standards pinard-yellow deepening to lemon-chrome at base; falls barya-yellow deepening to pinard-yellow at base. Practically a large yellow self.

GOLDEN PROMISE. Standards deep yellow; falls soft yellow faintly flushed soft lavender. 30 inches. **35 cents.**

GRACE STURTEVANT. 36 inches. In our opinion the greatest of all the Dominion seedlings and the greatest Iris Mr. Bliss has sent out. A very rich velvety brown with a most brilliant golden beard. **\$1.00**

HALO. Standards a light violet; falls a dull bluish violet. A vigorous grower of good habit. Resembles Lord of June, but the flower has more substance. **25 cents.**

HARMONY. A very deep, rich dark blue-purple self. A deeper purple than Souv. de Mme. Gaudichau. A strong grower and free flowering. **25 cents.**

HENRI RIVIERE (Millet, 1927). 42 inches. A splendid bicolor. Standards pure lemon-yellow; falls mauve, with yellowish reflex and a canary-yellow throat. Extremely late. **\$1.00.**

INDIAN CHIEF. One of the very best of the entire range of two-toned reds. Standards a beautiful violet-rose; falls deep rich glowing velvety red. Splendid for massing. **\$1.00.**

INNER GLOW. A delicately beautiful flower of medium size. A rich ivory-white with base of both standards and falls flushed a rich deep yellow, the inner glow. **25 cents.**

JACINTO. A blue-lavender with a decidedly pink tone. Good size, well branched, and flower of very pleasing form. **25 cents.**

JACQUELINE GUILLOT. Very large flowers of pure lavender-blue. Stalks strong and well branched; free flowering; wonderfully fragrant. Very satisfactory. 36 inches. **35 cents.**

JANE WILLIAMSON. General effect a pink pastel, glowing with iridescent colors. Standards bright lilac shading out to old gold; falls slightly deeper overlaid old gold. Fragrant. **25 cents.**

JUBILEE. Standards a rich peach color; falls creamy white, dotted and veined light brown. Flower ruffled. 30 inches. **25 cents.**

JUMBO. Standards Vanderpool's violet; falls mulberry-purple with distinct brown stripes on haft. **25 cents.**

JUNE BRIDE. A fine warm toned white with a heavy beard. This beautiful new Iris is outstanding and in a class with Snow White and Purissima. **\$2.50.**

KANSAS. 40 inches. A new pink-toned Iris of real merit. The flowers are large and shapely. Standards large, incurved, very beautiful Chinese violet; falls large, flaring and a beautiful light purple. Nearly a deep blue-lavender self. Standards have a beautiful ruffled effect. A very showy variety in the house. **50 cents.**

KATHERINE McFARLAND. Heads the group of deep purples. Standards deep mulberry purple; falls a rich velvety blackish purple. Very dark, rich, tall, well balanced and a striking variety. **50 cents.**

KING MIDAS. A splendid new Iris that always arrests the eye. Standards golden buff, suffused garnet-brown; falls velvety iridescent garnet-brown, edged golden buff, with heavy orange beard. Center of flower illuminated with glowing yellow lights. **\$1.00.**

KING TUT. 30 inches. One of the brightest of all the Irises. General garden effect bright glowing red. Standards cocoa-brown; falls Hessian brown. Every lover of a red Iris should have this one. **50 cents.**

KLAMATH. A violet and purple bicolor of perfect form and excellent substance. A larger flower than Lent A. Williamson with much richer coloring. **\$1.00.**

LABOR. Standards dark violet-heliotrope; falls darker shade than standards. General effect, reddish copper. A wonderful color, very distinct. One of the comparatively new introductions. We highly recommend it. 36 inches. **25 cents.**

LAMIA. A flower of good size on well-branched stems. 46 inches. Standards an even light blue-purple to rose-pink. Falls same as standards, turning a richer purple at center. **35 cents.**

LINDBERGH. Soft lavender-blue standards with dark blue falls, with a distinct lighter border. A distinct flower. **35 cents.**

LONA. Another beautiful, richly colored, ruffled plicata of which Sass has produced so many. A soft buff, heavily marked purple at the edges. 30 inches. Very striking. **25 cents.**

LORD LAMBOURNE. Standards a soft shade of rose-fawn; falls a rich crimson with white reticulations at the base. Heavy bright yellow beard. 44 inches. **25 cents.**

LOS ANGELES. A very large white flower of fine shape and substance. Standards very faintly edged blue; falls beautifully reticulated blue and brown at base. This charming white is noticed quickly in the field for its poise and clean appearance. Truly the finest white we have seen. **75 cents.**

MAGENTA. A very beautiful flower with a much finer color than its name implies. A bright pinkish red. A self color. It appeals to all who see it. If you are looking for a good Iris of this color it will appeal to you. **75 cents.**

MAGNA CHARTA. A pure white flower, strikingly dotted with splotches of intense blue ranging in size from minute spots to blotches a half an inch long to an eighth inch wide. A very distinct and attractive Iris. You might look our Iris fields over and you will find no other like this one. If you wish something different order Magna Charta. **\$1.00.**

MAGNIFICA (Vilmorin). 8.7. Standards white flushed with violet-blue; falls long, drooping, deep reddish violet, reticulated chestnut. Great large blooms; tall, strong, well-branched stems. 40 inches. **25 cents.**

MAJESTIC (Bliss). 8.8. A Dominion seedling. Very large flowers of fine form and lasting quality. Standards round, light lavender to mauve shaded bronze at base; falls straight hanging, rich raisin-purple. Free bloomer; stout stems. 36 inches. **25 cents.**

MANON LESCAUT. One of those indescribable things called plicata but which are not. Standards, cream delicately edged with violet; a fine line divides a cream-white center; then a wider area overlaid with violet. Falls much the same except for the unusual cream and purple beard. Enriched with red-brown coloring in the throat. Very strong; develops rapidly; blooms lavishly. **50 cents.**



Grace Sturtevant.

Free!
One
**Gobelin
Red Iris**

With This Collection

A \$20.00 Value in 1929

Actually ox-blood red . . . entirely free from reddish purple . . . greatest of all red Iris.

IRIS

Special Limited Offer

- BRILLIANT.** Brilliantly red-toned, free flowering.
- BRONZE SPHINX.** Beautiful ruffled yellow bronze.
- CORRIDA.** A really clear blue; excellent landscape variety.
- FRA ANGELICA.** Buff standards, blue-bronze falls.
- MANON LESCAUT.** A symphony in yellow, brown, violet, white.
- MRS. MARIAN CRAN.** Soft rose-pink; large, shapely.
- MILDRED PRESBY.** Standards ivory-white, falls rich pansy-violet.
- MIDWEST.** White with distinctive purple borders, heavily ruffled.
- NAIAD ATLANTA.** Entirely flesh pink.
- PENN TREATY.** Rich deep velvet of blackish violet.
- SEMINOLE.** In effect a brilliant velvety red-crimson.
- TAJ MAHAL.** A blue veined robust white.
- TROSTRINGER.** A genuine apple-blossom-pink.
- TRUE CHARM.** White with dainty blue edges.

Only **\$3.00**

NOTE: In this sensational Iris collection are four other outstanding varieties which alone comprised a \$55.00 value in 1929. These four are Bronze Sphinx, Manon Lescaut, Naiad Atlanta and Penn Treaty.

For This Entire Superb Collection, Including Free Gobelin Red, IF ORDERED ON OR BEFORE AUGUST 10, 1934.

MAORI PRINCESS. The richest of all the bicolor blends. Standards intense golden yellow; falls, a very rich velvety maroon, with a well defined gold border. A bicolor we like very much. **50 cents.**

MARY BARNETT. To be like Princess Beatrice is a fine recommendation. Mary Barnett is a Princess Beatrice improved! A larger flower with a great golden beard, so intensely brilliant it lightens the whole flower. If you were ordering your Iris from the fields you would surely include this variety if you wished a fine light blue. **25 cents.**

MARY ORTH. A fine blended blue with a hazel-brown haft. **50 cents.**

MELCHIOR. A reddish purple that resembles Mrs. Valerie West. A red-purple so rich in both standard and fall as to be almost a self. Growing this season among the best of all red-purple it was a rich, brilliant, outstanding flower. In fact, one of the very best. **\$1.00.**

MIDGARD. A wonderful blending of pink and yellow. General effect, a rich shade of pink. Large flowers, perfectly formed. This variety and Naiad Atlanta have much the same coloring. Both are pleasing varieties and all who visit our fields spot these two. **50 cents.**

MILDRED PRESBY. Standards ivory-white, faintly flushed lavender; falls rich pansy-violet, faintly edged lavender-white. Considered by many as Mr. Farr's very best Iris. 32 inches. **25 cents.**

MOONLIGHT. Standards pale amber-yellow; falls sulphur-yellow, with heavy greenish gold reticulation. Broad lemon-yellow beard. Fragrant. A large, well formed flower. Well named. 36 inches. **25 cents.**

MORNING GLORY. Another new red-purple with unusually rich coloring in both standard and fall. Standards, an even rich deep blue-lavender; falls, very rich velvety red-purple. A large well-shaped flower. **\$2.50.**

MRS. H. F. BOWLES. Standards soft brown, overlaid with old gold; falls brilliant brick red. Very distinct. 36 inches. **25 cents.**

MRS. MARION CRAN. One of the very finest of the soft rose-pinks. Large flowers of perfect shape. For a real pink, this is the one to order. 48 inches. **35 cents.**

MRS. VALERIE WEST. Dominion seedling. We think this the greatest of all the Bliss Irises. Falls of enormous size and great substance, rich deep crimson-brown; standards large, lavender shot with bronze. Strong stem, 40 inches. Well branched. Far better than the average run of the good Dominion seedlings. **\$1.00.**

MY MARYLAND. A beautiful seedling of glowing embers which it resembles but is redder in tone. Carries from eleven to twenty large blooms to a stalk. A rich flower, the color of which carries a long way. Standards a petunia-violet, flushed rose, shaded buff at the base; falls deep, velvety amaranth-purple, shaded buff. Very rich. **\$1.00.**

MESTOR (Perry). Standards a light violet-blue; falls a rich violet-purple. Large; very free flowering. An Iris you'll like. 42 inches. **25 cents.**

MIDWEST (Sass). A fine Iris of large size and heavily ruffled. Standards white flushed purple; falls white bordered purple. Fine. 30 inches. **25 cents.**

MME. HENRI CAYEUX (Cayeux). Standards reddish violet-purple; falls dark purple with edges lighter. Very fine. 36 inches. **25 cents.**

MORNING SPLENDOR (Shull). Standards Petunia violet; falls velvety raisin-purple; general effect, rich crimson. Everything considered, we think there is no greater, no finer Iris than this one. In size, form, color and substance, it is everything desirable. Very fragrant; free blooming. Awarded the Silver Medal of the Garden Club of America in 1926. 42 inches. **25 cents.**

NAIAD ATLANTA. Standards a creamy white suffused with violet; falls a deeper violet. Heavy orange beard. Flowers of medium size carried on stalks of medium height. **50 cents.**

NAÛMI. A pink and carmine bicolor. Very floriferous. Choice combination of lilac and dahlia-carmine. **25 cents.**

NOCTURNE. A beautiful flower from Mr. Shull that impresses us more each season. Flower is of good size and fine form. Rich, dark velvety flowers are held well erect on stiff stems. **75 cents.**

NUMA ROUMESTAN. Vinous red with deeper red fall. Lasts long in the garden. **\$1.00.**

ODAROLOC. Very free bloomer and of pleasing form. Blue toned verging towards pink. **25 cents.**

OLD GOLD. Standards, primoline yellow, ruffled; falls, old gold, overlaid buff; a few stripes on haft. Distinct yellow beard tipped brown. 28 inches. **50 cents.**

OLIVE MURRELL. Standards deep lavender-rose; falls rich lavender-blue flushed rosy bronze, fragrant and a splendid Iris. **35 cents.**

OPERA (Vilmorin). 8.7. A very bright violet-red bicolor, much admired. We sell out every year long before the season is over. Standards bright purple; falls rich deep red-purple. 32 inches. **25 cents.**

OPHELIA. A fine combination of color blending. Standards and falls, orange-cream, mauve and bronze; heavy orange beard. One of the most beautiful of the new Irises. 36 inches. **35 cents.**

PENN TREATY. A cross between Ambassadeur and Souv. de Mme. Gaudichau and inherits very rich qualities from both parents. A deep rich velvety or blackish violet. Perfect form; very thick texture. Standards, dauphin's violet; falls, deep blackish violet. A very rich dark-colored Iris. **35 cents.**

PEAU ROUGE. Fast grower and very floriferous. A good all over red. Yes, a brilliant deep red. **25 cents.**

PINK OPAL. Large flowers on 40- to 46-inch stems. A sister flower of Pink Satin which it resembles very much only it is a little deeper in tone. Many like it better. A rich pure pinkish lilac self. **\$2.00.**

PINK SATIN. A perfect pink self with a brilliant orange beard. Its name describes it as it is a clear light satiny pink. Mr. Sass has given us a most excellent flower in this variety and it will not disappoint you. **\$5.00.**

PIONEER. An immense red-purple of beautiful form. Standards large, bright, ampara-purple; falls very broad and of great substance, warm deep pansy-purple. Wonderful flower. **25 cents.**

PLUIE D'OR. The very best yellow Iris. Flowers larger and of finer form than Gold Imperial. Tall well-branched stems. Received a Dykes Medal. **75 cents.**

PONGEE. 38 inches. A light buff-colored self with a beautiful frosty iridescence. A bright golden beard enlivens the flower. **\$1.00.**

PRAIRIE GOLD. A beautiful deep rich yellow. 32 inches. Not a tall flower but wonderful for landscape effect. Mr. Sass considers this as fine an Iris as he has ever sent out. **25 cents.**

PRIMROSE. Standards amber-yellow; falls a lighter yellow; center a clear lemon-yellow. Long blooming; splendid form and substance. 30 inches. **25 cents.**



Pink Satin.

PRINCESS BEATRICE. A grand variety. Don't omit it. It is one of the must haves. Standards pale light blue, nicely domed; falls a little darker, broad and flaring. Although this Iris has become cheap in price, we consider it among the best of the light blues yet introduced in both color and form. It is perfect. **25 cents.**

PRINCESS WENONAH. Standards and falls beautiful uniform shade of light lavender, similar in color to Caroline Stringer. Prominent yellow beard. Heavy stiff stem, well branched. General effect pink. 30 inches. **25 cents.**

PRISCILLA. S. light blue-lavender; F. rich pansy-violet bordered with a distinct blue edging. Very rich and neat. Medium height. **25 cents.**

PUMILA (Baby Iris). Deep purple, very rich and effective when bordering the taller forms. These are among the earliest to bloom. They are very dwarf and make a fine border plant. **Each, 25c; 12 for \$1.75.**

PUMILA AZUREA. A beautiful dainty little Pumila not more than six inches high, just covered with deep lavender little flowers. **Each, 25c; 12 for \$2.00.**

RAGUSA. Standards fancy purple, erect; falls blackish red-purple; five to seven flowers on a 26-inch stem. One of the best dark red-purple blends of the intermediates. **50 cents.**

RAJPUT. A large, bright violet self of fine form and good substance, exceptional in vigor and growth. **25 cents.**

RAMESES. An immense new Iris that has rapidly grown in public favor. Plant large, strong and sturdy. Very floriferous. Standards large, domed and of beautiful soft, even, light russet flushed with pink-lavender; falls large, flaring deep pink. When the sun in the early morning or at the close of the day shines upon this flower it is simply wonderful. This variety was awarded the Dykes Medal in 1932 (The highest award an Iris can receive). **\$2.00.**

RED CLOUD. A fine upstanding Iris of medium height. S. light purple-red. F. deep purple with a strong red tone. **25 cents.**

RED ELF. A deep ruby-red self. Blooms small but many of them to a stem, which makes it a splendid red Iris for massing. Late. **\$1.00.**

RED WING. A wonderful bronzy red, similar to Allies, but very much larger. The flower is of perfect shape and stands on tall, stiff stems. A good red. **75 cents.**

RHEA. A tall, well balanced flower of good substance. An improved Isoline. S. lilac-pink; F. purplish old rose, golden at the throat. **50 cents.**

RHEINTRAUBE (Goos & Koenemann). Where one wants a medium toned blue for mass effect in the garden, this is the variety. Rheintraube will make the finest blue mass planting. **25 cents.**

RHEINGAUPERLE. An unusual soft orchid-pink. Falls a deeper shade of rose. The best of the orchid varieties. 34 inches. **50 cents.**

ROMANCE. Standards a soft blending of bronze and faint old rose; falls a deep garnet, heavily veined. 30 inches. **50 cents.**

ROSA BONHEUR. Standards pale metallic yellow; falls pale yellow, overlaid lavender-violet, with a sharply defined border of old gold. **35 cents.**

ROTA. Here is an Iris you cannot help but like. If you saw it blooming in the fields you would surely add it to your collection. An intense bright rosy red, with both standards and falls beautifully frilled. Medium height. **35 cents.**

ROBERT W. WALLACE. Standards rich violet; falls deep purple. Striking orange beard. One of the very best of the rich dark colored Irises. Immense flowers. A free flowering dark Pallida. Good form and substance. 42 inches. **25 cents.**

ROMOLA (Bliss). Dominion seedling. Standards pale lilac, tinged ivory-yellow; falls rich velvety red-violet. Vigorous; free flowering; large, beautiful blooms. 42 inches. **25 cents.**

SACHEM. A most beautiful bloom of the richest brown tones. Very firm substance and very rich. More brilliant and larger than King Tut. Extremely choice. **\$2.50.**

SEMINOLE. Soft violet-rose. Falls rich velvety crimson. Brilliant orange beard. Midseason. 28 inches. **25 cents.**

SENLAC. A bright clear aster-purple self. A vigorous grower and a very free flowering variety. Tall, strong, well branched stalks. A splendid variety. **\$5.00.**

SENSATION. A wonderful cornflower-blue Iris of perfect form and substance; great big flowers on tall, stout stems. A wonderful blue that was well named. Awarded the Silver Cup for the most outstanding flower in the Boston Show in 1931. 48 inches. **\$1.00.**

SERENADE. A very fine real pink that is often overlooked in making up a collection. **\$1.00.**



Wambliska.

SIMONE VAISSIERE. Standards white, slightly shaded blue; falls violet-blue. Resembles Lord of June, though standards are of better substance; more brown in the falls. **25 cents.**

SIR GALAHAD. Standards mauve; falls pansy-violet. A striking brilliant bicolor; very large, fragrant flowers. You will like it. 40 inches. **25 cents.**

SNOW WHITE. A pure clear white. Beautified by a greenish haft; tall, strong, hardy. Like White Knight, except much larger and somewhat taller. 36 inches. We have displaced White Knight with this variety as we find it much hardier. **35 cents.**

SOLFERINO. At a distance this Iris looks very much like Aphrodite which it far surpasses. The flower is larger and a trifle deeper in shade and does not have the white at the base of the falls which shows so plain in Aphrodite. Here is another violet-red that will surely please you. **50 cents.**

SOUV. DE MME. GAUDICHAU (Millet). 9.0. Standards very rich deep blue-purple; falls deeper shade, almost black-purple. Beard blue, tipped yellow. A wonderful Iris with every imaginable good quality. Has won more awards than most any other. In its color class it has no rival. 36 inches. **25 cents.**

SUNSET. Standards beautiful golden; falls same color suffused blue-violet, prominent deep yellow beard. Vigorous; free flowering; late; fragrant. 42 inches. **25 cents.**

SWAZI. Another fine dark blue-purple Iris coming into bloom late in the season. It is so much like Dominion that we believe the same description would fit either variety. **35 cents.**

- TAJ MAHAL.** A very fine white with large petals of great substance. Tall stems, well branched. One of the very best whites. 42 inches. **25 cents.**
- TENEBRAE.** A dark colored Dominion seedling of dependable growth. Standards violet-purple, darker at center; falls velvety blackish purple; center flushed straw-yellow. 36 inches. **25 cents.**
- THAIS.** 38 inches. A beautiful large pink flower with strong stems. A much clearer pink than Susan Bliss. Extra fine pink. **50 cents.**
- TITAN.** A Dominion seedling. Standards light violet-blue; falls violet-purple. When first introduced, it sold at \$50 per rhizome. Very striking, of fine form and texture. Hardy plant; strong, massive stems. 38 inches. **25 cents.**
- TROPIC SEAS.** A sister seedling to Morning Splendor. Standards violet; falls velvety mulberry-purple. A large flower on tall, erect stems. 42 inches. **25 cents.**
- TROSTRINGER.** A cross between C. E. Stringer and Trojana. Taller than either of these two good Irises. A splendid soft pink. **25 cents.**
- TRUE CHARM** (Sturtevant). A beautiful Plicata of elegant form. Flowers white with delicate blue-lavender margin. Hardy, vigorous grower. 40 inches. **25 cents.**
- VALENCIA.** A beautiful bright orange-buff self. Large flowers; excellent form; remarkable substance. A popular favorite. 36 inches. **25 cents.**
- VALKYRIE.** 33 inches. A fine large flower on tall, stout branching stems. Standards olive-like; falls dark maroon-purple. A very rich Iris as the sun plays with its great blooms as they move gently in the wind. **50 cents.**
- VERT GALLANT.** 48 inches. A very large flower of great substance, brilliant coloring and the finest form. Standards are a blending of coppery fawn and soft lilac; falls intense garnet-red with bronze edge. An outstanding Iris in every way. **\$2.00.**
- VESPER GOLD.** A distinct yellow with soft violet flush and gold and maroon veinings on the falls. A late variety. 40 inches. **35 cents.**
- VIKING.** A large blue bicolor of excellent form and substance. **25 cents.**
- WACONDA.** 38 inches. Standards a deep fuchsia-red; falls rich velvety violet-carmine. The general effect of this flower is a metallic light red. **\$1.00.**
- WAMBLISKA.** A very large white with just the slightest tracings of blue undertone. Flowers of fine form and finish, a strong, free flowering, thrifty plant. There is a plant of it as this is written in the garden with five great full open flowers. It is a great flower. **\$1.00.**
- WEDGEWOOD.** Standards and falls an even tone of rich blue. Large flowers with prominent white beard. As the flower ages it fades to a lighter blue which doesn't mar its beauty. Prolific. 42 inches. **25 cents.**
- WHITE QUEEN.** A pure white Iris that we like very much. The color is pure with slight tracings of green on the haft which only adds to the beauty of the flower. **25 cents.**
- WILD ROSE.** An Iris well named. A dainty satiny pink. One you will admire. 36 inches. **35 cents.**
- YELLOW MOON.** Standards and falls a soft yellow. A variety of wonderful texture. A real addition to any garden. 36 inches. **50 cents.**

Fine Iris Priced Cheap

In this list of Iris we have placed the very best of the older varieties. In fact, we think many of them, as yet, have not been surpassed in beauty or size by any of the newer ones that sell at higher prices. We do not believe there is an Iris in this list that will fail to please anyone who purchases it. If planted early, they will all bloom next season.

Make Up Your Own Selection	These Iris	Any 12	Our Choice
Select just the color combinations you like. Plant at least 3 of a kind for best color effect.	are priced so cheap that we cannot accept orders to be sent postpaid for less than \$1.00.	Your choice, all labelled for \$1.00, postpaid. They may be all different, all alike, or in groups as you want them.	We will select for you 15 excellent Iris, all different colors, not labeled, for \$1.00, postpaid.

Acheron. A very dark red-purple.
Amber. A very fine bright yellow.
Ben Bow. A bluish violet self color.
Blue Boy. A rich purple with blue beard.
Bluet. A very desirable real blue.
Caprice. A good profuse red-purple.
Cecil Minturn. A uniform shade of rose.
Corrida. A late beautiful self blue.
Dream. A tall uniform pink-lavender.
Edith Scoville. A rich red-purple.
E. H. Jenkins. A beautiful light violet.
Evening Glow. A uniform pale lavender-blue.
Flammenschwert. S. empire yellow; F. velvety brown.
Fra Angelica. Unusual. S. buff; F. blue.
Fritjof. Lavender and soft purple falls.
George Yeld. An apricot and wine combination.
Harpalion. A tall, uniform light blue-lavender.
Harriet Presby. Tall, late, pinkish lilac.
Her Majesty. Soft rose, deep veined reddish falls.
Iris King. S. buff; falls garnet-brown.
Isoline. Silvery rose and mauve.
Japanesque. White and lavender. Formed like a Japanese Iris.
Kathryn Fryer. S. yellow; F. rich reddish purple.
Kochi. Early. Dwarf, rich deep purple.
Lady Byng. Lavender-orchid bordering on pink.
Lent A. Williamson. S. soft violet; F. velvety royal purple.

Lord of June. Very large light lavender-blue.
Mme. Chereau. White with frilled lavender edge.
Mme. Chobaut. An attractive creamy pink.
Monsignor. A deep velvety violet-blue.
Mother of Pearl. A large very fine bluish lavender.
Mrs. Alan Gray. General effect pink. Fine for massing.
Mrs. Hetty Matson. Mauve with red-purple falls.
Nimbus. A very rich dark purple Iris.
Parc de Neuilly. A rich deep uniform purple.
Perfection. A blue-purple bicolor.
Phyllis Bliss. A beautiful rosy lavender self.
Prosper Laugier. S. fiery bronze; F. ruby-purple.
Prospero. Enormous, late, deep lavender-violet.
Quaker Lady. An unusual smoky lavender.

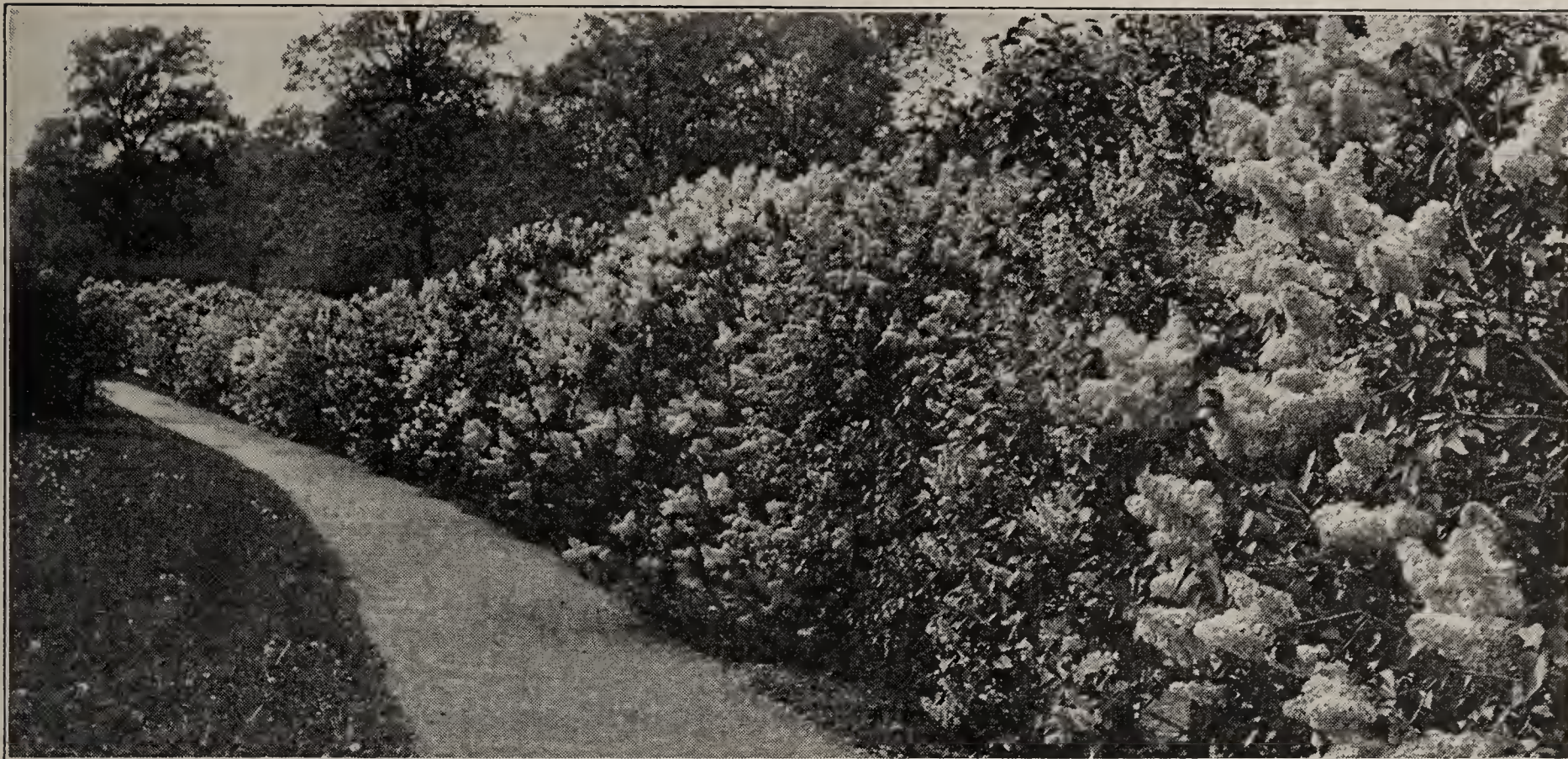
Queen Caterina. A pale lavender-violet self.
Queen of May. A tall lilac-rose, almost pink.
Rhein Nixe. White standards, purple falls.
Ranona. A lavender-brown blend.
Rose Unique. An early deep pink.
Shekinah. A pale lemon-yellow.
Sherwin-Wright. A deep golden yellow.
Steepway. Reddish fawn and rosy mauve falls.
Susan Bliss. Rich rose-pink self.
Sweet Lavender. Just like its name.
Zanardelle. A real blue self color.
Zwanenburg. Very odd. Cream blotched greenish yellow.

FOR MASS PLANTING

or for
 Decoration Day
 Cut Flowers

You may choose 100 Iris from this list in as many as ten different varieties. These will be labeled, for

\$6.00



Brand's New Improved French Lilacs

Far More Beautiful Than the Common Lilac

"THE OWN-ROOT LILAC IS THE ONLY LILAC ONE SHOULD PLANT"

Reference: Read *Journal of the Arnold Arboretum*, Volume XII, No. 2, article entitled, "Graft Blight—a disease of the Lilac related to the employment of certain understocks in propagation."

For many years hybridists have been at work improving the Lilac. The most of this work has been done in France, and from there the great bulk of our improved Lilacs have come. For this reason, these new Lilacs are called Improved French Lilacs.

These new Lilacs usually come to us propagated either on the root of the common Lilac or on a root of one of the many varieties of privet. Neither of these understocks has proven satisfactory. The common Lilac is a rapid grower and throws up many suckers from its roots. As a rule, these suckers grow more rapidly than the graft of the Improved Lilac and the result is that the choice Lilac top is overgrown and choked out. Again, where the privet is used as an understock—if the Lilac is not planted deep enough so that the union of Lilac and privet is at least a foot under ground—the privet root will kill out in the winter, or, if it lives, it sends up privet suckers about the Lilac top which prove a great nuisance.

Finding several years ago that good Lilacs, propagated in either of these ways, were very disappointing in our cold climate, we set about to bring out the improved Lilac on its own root. We find that we can work some varieties onto their own roots very readily, while it is very difficult to grow others in this way. Some of the choicest sorts are the hardest to force onto their own roots, and such sorts will always be scarce and high priced until we learn how to propagate them faster.

Advantages of the Own-Root Lilac. The Lilac you buy from us is on its own root. If this Lilac sends up a sucker, the sucker is the same as the bush from which it springs. It grows at the same rate as does the mother bush and when it blooms, the bloom is identical with that of the original plant of which it is a part.

We have never had ultimate success with these new Lilacs where they were on common Lilac root and not more than fifty percent success where they were grafted on privet root, yet we have always had perfect success with Own-Root Lilacs, so we believe the Own-Root Lilac is the only Lilac to plant and to offer our customers; and we believe an improved Lilac on its own root is just as long lived as the common Lilac.

Growing an Improved Lilac on its own root is a slow process. It actually takes us 2 years longer to produce a Lilac of a given grade on its own root than it would take to produce the same grade on privet. Yet we insist on sending out only those Lilacs that will prove satisfactory, so our customers can depend upon receiving only genuine own-root plants.

We have a wonderful deep rich alluvial soil; the soil in which the Lilac revels. This contributes to strong thrifty tops with a large, well-balanced root system. This fall our stock will be unusually fine.

Planting. Lilacs can be planted either in spring or fall. In the spring, it should be done **very early before the buds start**. In the fall the planting season starts about September 20th and continues in the North well into late October, while in the South planting can go on all winter.

To allow the French Lilac its natural spread, the plants should be set out not less than 8 feet apart. Dig a hole as large as a bushel basket. Fill back with rich top soil

and tramp down firmly until you can place the plant on this soil so that when roots are spread out naturally the crown will be an inch or two lower than it was in the nursery. Work the soil in carefully among the roots until the hole is half full; then tramp this down unusually hard. Then pour in a full pail of water. After this has settled away fill the hole with loose mellow soil until it is rounding full; then tramp lightly. Keep plants well hoed. Where planting is done in the fall, place a coarse mulch about bushes first winter to keep ground from heaving.

Fertilizers. A Lilac likes a sweet soil and responds wonderfully to applications of lime. Use 4 quarts of lime to a large bush each year. Any good well-balanced fertilizer can be used with good results.

Heavy applications of well rotted barnyard manure every 3 years covering the ground about the bushes is best.

Trimming. Do not trim your Lilacs when you receive them, wait until they have blossomed and as soon as the flowers fade remove just the blossom stem but none of the new wood surrounding it, as it is on this new wood that next year's bloom appears. As the bush starts to become too large and tall it should be gone over in March and from a quarter to a half of the older part cut back to within 3 or 4 feet of the ground. This will soon put on new growth and if this practice is carried out every year the bush can always be kept young, within bounds, and will produce very large blooms.

Caution. The newly planted Lilac often acts as though it were going to die even after it has made a good start the first spring. The leaves suddenly stop growing, turn limp, and the bush looks as though it were dying. As a rule there is no cause for alarm. Give the plant a good, thorough soaking of water; then cultivate it well the balance of the season. The next spring remove any dead wood and your Lilac will come all right.

Pests. Oystershell scale and the lilac borer are about the only enemies of the Lilac. For oystershell scale use as a spray either lime-sulphur or an oil spray. Use liquid lime-sulphur in preference to dry at the rate of 1 part to 7 parts water, or if the oil spray is used then at the rate of 1 part to 15 parts water. In using the oil spray be sure the sprayer is thoroughly cleaned out before putting in the oil. Lime-sulphur spray should be applied just as the buds are beginning to show green, while the oil spray should be used just before the buds show any green.

The lilac borer is best handled by prevention. If bushes are kept well cultivated and growing, there is but little borer trouble. Where the borer is at work, he may be taken and killed by running a small wire into the hole and twisting it around to accomplish this. One can also shoot carbon bisulphide into the furrow of the borer with a medicine or fountain pen dropper; then plug up the entrance with putty.

In looking through our Lilac pages we wish to call your attention to two very special offers that we are making this fall. You will find these listed on page 26, and on the inside back cover page.

Our Lilac Collection

We have over 160 kinds of the best Lilacs. Whenever we hear of a new one, we buy it and try it out.

We bloom all of these in our trial gardens. In this way we can choose from the entire range of varieties, compare one with the other, and eventually retain the best.

We find some of the older sorts as good as the best of the new ones. These we retain. We find many superb things among the newer sorts. These we add definitely to our list. But we also find many of both old and new that we can do without. These we drop. It is our constant aim to keep an offering of new Lilacs as good as the best.

This fall we are offering an unusually fine list of French Lilacs. With but few exceptions they are all recent introductions. Since we offer no new Lilac until we have it **on its own root**, we may not always offer these same Lilacs as soon as those who grow them on privet.

Remember, the following list are mostly new Lilacs, all of the very best. They are **own-root Lilacs**. New Lilacs on their own root are decidedly scarce. If you want any of these for fall, place your order early. We do not have many of any one kind and they will not last long.

If you were to try to write a description of the most beautiful sunset you ever saw, you would be in the same position that we are in today when we try, in the brief descriptions we give, to convey the beauty of all the Lilacs we offer. The best we can do is to give you the color, form, size, and type; leaving you to imagine the rest.

INSIST on Own-Root Lilacs

In placing your order for Lilacs, you will naturally compare prices. Do not confuse the prices of Lilacs grafted or budded on California Privet with the price of own-root Lilacs.

It is the **OWN-ROOT** on a French Lilac that makes it cost more.

Our Lilacs are on their own root

BELLE DE NANCY. Double, large; satiny rose, showing white towards the center. General color effect deep pink. Generally considered one of the finest Lilacs on the pink order.

Own-root, 2 to 3 ft., \$1.00; 3 to 4 ft., \$1.25.

CAPITAINE BALTET. Single. Immense flowers of a rich purple-lilac shade. Huge florets. Classed among the very finest of the pink Lilacs.

Only 10 to sell. Own-root, 2 to 3 ft., \$5.00.

COMPTE DE ADRIEN MONTIBELLO. Double. When we have asked those who have large collections of Lilacs to name the ten varieties they consider the best, Comte de Adrien Montibello is almost invariably named among them. A very double, very large, compact panicle of as near a good blue as can be found in Lilacs.

Own-root, 2 to 3 ft., \$3.50; 3 to 4 ft., \$5.00.



Thunberg.

CONDORCET. This is one of the very best of the blue Lilacs. The panicles are very broad and compact. The color is a clear rich light blue. If one wishes as near a blue as is to be had in a Lilac they will be pleased with Condorcet. This is the first time we have been able to offer this fine variety at so low a price, but our stock warrants this price this season.

Own-root, 2 to 3 ft., \$2.50; 3 to 4 ft., \$3.50.

CONGO. Immense, single, wine-red. This is the best Lilac of its color. I have asked many Lilac experts for their choice of the 12 most beautiful Lilacs, almost without exception Congo is one of the first named. We place Congo among the 12 best of all Lilacs. We have only a few to offer.

Own-root, 2 to 3 ft., \$2.50; 3 to 4 ft., \$3.50.

DE MIRABEL. Single, dark bluish violet. This is by far the darkest of all our Lilacs. It is one of the choicest things in the entire line. Panicles rather slender, long, compact, and upright. Very noticeable. This is one blue you should really have.

Own-root, 2 to 3 ft., \$3.50; 3 to 4 ft., \$4.00.

DE SAUSSURE. Double. Medium sized, compact, slender spike. Buds open deep wine-red with touches of white on the points of the petal, giving the bloom an interesting effect. As the flower develops it fades to a deep rose color.

Own-root, 2 to 3 ft., \$2.00; 3 to 4 ft., \$3.00.

EDITH CAVELL. A very showy, pure milk-white; buds suffused cream and pale sulphur. Panicles extra large, long and cone-shaped. This Lilac is as large and as fine as Miss Ellen Willmott.

Own-root, 2 to 3 ft., \$4.00; 3 to 4 ft., \$5.00.



Congo.



Katherine Havemeyer.



President Loubet.

EDMOND ABOUT. Double. A bush of large, strong heavy foliage. Large panicle with large florets. Reverse of petals blue, fading to lavender as bloom opens. Very choice. **Only 6 to offer. Own-root, 2 to 3 ft., \$3.00.**

EMILE GENTIL. A bright cobalt-blue, a very rare and pleasing shade among Lilacs. Extra large double florets, with dense medium sized blooms, broadly pyramidal. Another of the choice ones. Very rich. **Only 6 to offer. Own-root, 2 to 3 ft., \$3.00.**

GENERAL PERSHING. Rich purple-violet, in very long blooms in compact clusters held erect. A very showy Lilac. **Own-root, 2 to 3 ft., \$3.00.**

GRACE ORTHWAITE. A real pink Lilac. Single. Upright spreading bush. Extremely thrifty. Panicles rather open, of medium size. Bloom comes well above the foliage. Such a distinct pink, it is noticeable from a long distance. **Own-root, 2 to 3 ft., \$1.50.**

GEHEIMRAT SINGLEMARK. Single. A very deep blue; very striking and distinct color. If you are looking for an unusual Lilac, here it is! **Own-root, 3 to 4 ft., \$2.00.**

GEORGES BELLAIR. Double. Large, compact truss. A very pleasant shade of creamy white with distinct markings of bright pink on some of the petals which seem to give the entire great bloom a distinct tinge of pink. A crackerjack. **Own-root, 2 to 3 ft., \$2.50; 3 to 4 ft., \$3.50.**

HENRI MARTIN. Double. Extremely long, graceful panicles. Beautiful blue-lavender—a splendid new Lilac. Our show plants of Henri Martin are right by the path as we go from the office to the trial fields beyond. We pass it many times a day when it is in bloom and we always stop and marvel at its beauty. **Own-root, 2 to 3 ft., \$2.50; 3 to 4 ft., \$3.50.**

HIPPOLYTE MARINGER. Double. A large to very large, light pinkish lilac; with long, open trusses. The double florets as they open take on a fluffy effect which gives to the great panicles a peculiarly lovely appearance. We like it very much. **Own-root, 2 to 3 ft., \$2.50; 3 to 4 ft., \$3.50.**

HUGO KOSTER. Single. One of the newer sorts and quite an improvement over older varieties of its color. Panicles very large, broad at base, and tapering nicely towards the top. Color a deep lavender with tracings of pink. Florets large and of great substance. Very beautiful. **Own-root, 2 to 3 ft., \$1.00; 3 to 4 ft., \$1.50.**

JACQUES CALOT. Single. Very large panicles of rosy pink flowers with the individual florets very large. One of the old varieties but one of the most floriferous of the entire collection. The petals are nicely formed, and the bushes are simply covered with bloom of a distinct pink. One of our most admired Lilacs this season. **Own-root, 3 to 4 ft., \$2.50; 4 to 5 ft., \$3.50.**

JAPONICA. Single. A very fine Lilac where a small tree is wanted in the rear of a lot or as a small lawn tree. Grows into a very clean and trim tree about 20 feet high; heavy, dark green, glossy foliage; great plume-like panicles of creamy white. This is the real tree Lilac. **Own-root, strong, 2 to 3 ft., \$1.00; 3 to 4 ft., \$1.50.**

JAN VAN TOL. Single. This is the largest of all the single whites. The panicles are very broad and long with great large individual florets. Very fine for cut flower work. **Only 11 on hand. Own-root, 2 to 3 ft., \$2.50.**

JOSIKAEA (Hungarian Lilac). A distinct late flowering species from Asia. It forms a small tree if desired, otherwise grows naturally as a bush. Has large, shining leaves, and dark purple flowers. Late. **Own-root, 2 to 3 ft., \$1.00; 3 to 4 ft., \$1.25.**

JULES SIMON. Double. Immense flower with very large florets. Deep purplish blue to lavender. Here is another Lilac that will just surprise you when you see the great panicles begin to open. An extra large Lilac and a good one. **Own-root, 2 to 3 ft., \$1.50; 3 to 4 ft., \$2.00.**

KATHERINE HAVEMEYER. Double. A splendid new Lilac which we have not had long enough to bloom on old bushes, but on 3- to 4-foot bushes in the show beds it gave us some wonderfully large panicles. Looks very choice to us. Intensely double. General color effect pink. **Own-root, 2 to 3 ft., \$2.00; 3 to 4 ft., \$2.50.**

LEON GAMBETTA. Double. Panicles of the greatest size. Buds and reverse of petals very pink, which gives the flower a general pink effect. Deep pink buds open into very double little roselike florets of the daintiest pink and lavender. We still say it is the finest of all Lilacs and we want to emphasize this. There are many fine Lilacs but we believe this is the most beautiful of all. **Own-root, 2 to 3 ft., \$3.50; 3 to 4 ft., \$5.00.**



Oliver de Serries.



President Poincare.

L'ONCLE TOM. Double. Very dark red. It is hard to say just which is the darkest Lilac. Most people say it's L'Oncle Tom.

Own-root, 2 to 3 ft., \$2.00; 3 to 4 ft., \$3.00.

MARCEAU. Double. Immense panicles of a pure lilac-mauve. Although we really believe Leon Gambetta is the most beautiful of all Lilacs, we must admit that we also believe Marceau the most sensational. Its panicles are so large, so dense, and yet so beautiful that one can scarcely believe one's eyes when they see good Marceau. (Lemoine lists Marceau as a single. We purchased this variety and it is a double. We do not know the true name but it is one of the very finest of all and you cannot be without it).

Own-root, 2 to 3 ft., \$3.50; 3 to 4 ft., \$5.00.

MARC MICHELI. Double. Another great blooming Lilac with fine, full panicles of lavender-mauve borne in great quantities.

Own-root, 2 to 3 ft., \$1.50; 3 to 4 ft., \$2.00.

MARECHAL LANNES. Semi-double. Large panicles with extra large florets. A peculiar shade of blue-violet. A prodigious bloomer even on very small bushes. Many Lilac connoisseurs class this new one as among the very best. Distinct. An immense flower.

Only 9 to offer. Own-root, 2 to 3 ft., \$5.00.

MARIE LEGRAYE. Single. Pure creamy white. To us, this good single French Lilac is a special sensation. Panicles very large and rather openly built. The individual petals and florets are very large. Blooms profusely, often as a two-year-old. Sells very readily at a good price as a cut flower.

Own-root, 2 to 3 ft., \$1.00; 3 to 4 ft., \$1.25.

MIRABEAU. Single. An early, free blooming, deep hellebore-red expanding to lobelia-violet.

Own-root, 2 to 3 ft., \$1.50; 3 to 4 ft., \$2.00.

MISS ELLEN WILLMOTT. Double. A large bush with very stout limbs and large, thick, light green leaves. The flowers come in immense panicles of creamy white, made up of double florets almost twice the size of those of any other double white. In our estimation this is the greatest double white Lilac and one of the three or four finest of all Lilacs.

Own-root, 2 to 3 ft., \$3.50; 3 to 4 ft., \$5.00.



Miss Ellen Willmott.

MISS FLORENT STEPMAN. Single. Tall, upright grower; light, clean foliage; long, medium, compact panicles. Pure white with large, beautiful florets.

Own-root, 2-3 ft., \$1.00; 3-4 ft., \$1.25.

MME. ANTON BUCHNER. Double. Tall, upright growing bush. Dark colored foliage with dark purplish bark on the new growth. Panicles long, narrow and held upright. Color a rich deep violet-purple showing much deep blue. Very rich and fine.

Own-root, 2 to 3 ft., \$2.50; 3 to 4 ft., \$3.00.

MME. CASIMER-PERIER. Double. Creamy white. This is a very thrifty growing variety. It produces a profusion of large panicles of very double, creamy white flowers. The bush is of medium height, compact, with bright, light green foliage. This is a splendid variety, but we have worked up a large stock, so we are making a special price. Everyone should plant one of these beautiful Lilacs.

Own-root, strong, 2-3 ft., \$1.00; 3-4 ft., \$1.25.

MME. LEMOINE. Double. One of the best of the double whites; a pure snow-white without tinge of cream. Foliage dark green. Panicles large, long, erect; large individual florets.

Own-root, strong, 2-3 ft., \$1.00; 3-4 ft., \$1.25.

MONT BLANC. Single white. This beautiful Lilac is one of the very best of the single whites, if not the best of all. The plant is compact and shapely in growth, with clean foliage. The panicles are large, rather compact and of beautiful form. The florets are immense in size. Color a creamy white.

Own-root, strong, 2-3 ft., \$1.00; 3-4 ft., \$1.50.

OLIVER de SERRIES. Double. Tall bush, good grower. Large to very large open panicles. Large florets with large individual petals. A clear, clean, pleasing lavender. One of the extra choice Lilacs.

Own-root, strong, 2-3 ft., \$2.50; 3-4 ft., \$3.50.

PRESIDENT LOUBET. Double. Red. One of the very choicest. Medium height plant. Panicles appear rather small just as the florets begin to open but they slowly develop as the florets continue to open until they become immense. A bright red in the bud stage, but showing considerable white on the inner edge of the opened petal. One of the very best.

Own-root, strong, 2-3 ft., \$2.50; 3-4 ft., \$3.50.



Wm. Robinson.

PRESIDENT POINCARE. Double. Very thrifty plant; grows into a large, heavy-limbed bush. Panicles large to very large, globular, made up of many lobes. Petals very large, purplish red on outside, turning to lavender-blue as they open. An immense and impressive bloom. Very striking.

Own-root, strong, 2-3 ft., \$2.50; 3-4 ft., \$3.50.

REAUMUR. Single. Violet-carmine. Panicles of immense size, even on small plants. One 3- to 4-foot plant had one great bloom, season of 1931, 16 inches through by 16 inches deep. Very showy. A sensational new Lilac.

Own-root, strong, 2-3 ft., \$2.50; 3-4 ft., \$3.50.

RENE JARRY-DESLOGES. Double. Azure-lilac-mauve with rose reflex. Panicles very large. A rare, delicate shade of blue.

Own-root, strong, 2-3 ft., \$2.00; 3-4 ft., \$2.50.

SENATEUR VOLLAND. Double. Very floriferous. A very pretty Lilac with a large bloom that is somewhat open. When in the bud the reverse of the petals shows a very distinct bright touch of pink which continues to show as the florets open and gives a very dainty effect to the bloom. Center of florets pinkish light lilac. Very dainty in its beauty.

Own-root, strong, 2-3 ft., \$1.00; 3-4 ft., \$1.50.

SOUV. DE LUDWIG SPAETH. Single. Red. Although one of the oldest of the improved Lilacs still it is one of the very best Lilacs grown. It seems impossible to get a red that has so many good, and so few bad qualities as Ludwig Spaeth. Panicles long and held erect well out from the foliage. Color a brilliant intense rich purple-red, that holds up well in the sun and lasts a long time. Bush large and a very profuse bloomer. A wonderful Lilac.

Own-root, 2-3 ft., \$1.00; 3-4 ft., \$1.50.



Congo.

STATZGARTNER ROTHPLEZ. Double. An upright growing shrub with long, cone-shaped panicles. A rich red-purple.

Own-root, strong, 2-3 ft., \$1.50; 3-4 ft., \$2.00.

THUNBERG. Double. Very large, long, slender spikes, generally two to the panicle. Buds and reverse of florets, a violet-mauve with a reddish appearance from a distance. Florets are large; open a light lilac, twisting and turning as they open, so that the color of the bud is intermingled with that of the inside of the petals. This makes all in all, a very striking Lilac which we chose as one of the best of the entire collection. Strong grower.

Own-root, strong, 2-3 ft., \$2.50; 3-4 ft., \$3.50.

VESTALE. Single. One of the best of the single whites. An upright growing bush with long, narrow, conical panicles which stand upright.

Own-root, strong, 2 to 3 ft., \$1.00; 3 to 4 ft., \$1.50.

VILLOSA. Another excellent Lilac for large and small plantings. Grows into a large shrub, 10 feet high, with large, heavy, waxy leaves. Comes into bloom when all other Lilacs are gone. Panicles large, broad, plumelike, a delicate pink color.

Own-root, strong, 2 to 3 ft., \$1.00; 3 to 4 ft., \$1.25.
Select, 4 to 5 ft. specimen plants, \$2.00.

VIOLETTA. Double. One of the very darkest Lilacs. Deep bluish violet—a very unusual color. Large, open panicle with very large individual florets. New. Very scarce. We have only ten of these to offer.

Own-root, strong, 2 to 3 ft., \$2.50; 3 to 4 ft., \$3.50.

VOLCAN. Single. One of the most robust and shapely growing of all of the best Lilacs. As near a true deep red as we have. Panicles which are very long, large, and shapely, come up well above the foliage. These panicles look rather open as they are in the bud stage but as they develop they open into one of the finest, most shapely, and largest of all these Lilacs. We have but a few plants in this variety for sale, as the demand for it is so great from people who see it on our grounds when in bloom that we seldom have any left.

Own-root, 2 to 3 ft., \$2.00; 3 to 4 ft., \$2.50.



Mme. Casimer Perier.

INSIST On Own-Root Lilacs

In placing your order for Lilacs, you will naturally compare prices.

Do not confuse the prices of Lilacs grafted or budded on California Privet with the price of own-root Lilacs.

It is the Own-Root on a French Lilac that makes it cost more.

Our French Lilacs are on their own root.

Plant French Lilacs

For a Boundary Line

along a driveway, or use them for a screen to shut off some unsightly object. Use them for a tall untrimmed hedge.

If you desire the planting to be of one color, we recommend those varieties which are the best growers and the most prolific bloomers.

For this purpose we believe **Mme. Casimer Perier** which is a fine double variety, to be the very best if one prefers white.

For a light red we would choose the heavily blooming single variety, **Chas. Tenth.**

Deep red **Souv. de Ludwig Spaeth** can not be excelled, and for a Lilac on the blue order we heartily recommend **Chas. Sargent.**



Special Offer of French Lilacs for Screens or Hedge

MME. LEMOINE. Double white.

MME. LEON SIMON. Double blue-lavender.

CHAS. JOLY. Double red.

OWN-ROOT	}	Ten 2 to 3 ft. for	\$6.00
		Ten 3 to 4 ft. for	7.50

The GERALDI LILACS

—The Earliest Lilacs to Bloom

The following lilacs are hybrids between different French Lilacs and the hardy early-blooming lilac, Gerald, found growing wild in north China. These lilacs are all from three days to a week earlier than the regular run of French Lilacs and thus prolong the lilac season by that length of time.

BERRYER (On Villosa). Semi-double. A beautiful clear mauve with deeper shadings toward red. One of the very choicest of the early hybrids; distinctly different; also the latest of this new line of Lilacs. Exceedingly pretty.
Own-root, 3 to 4 ft., \$2.00.

LAMARTINE. Single. Earliest to bloom of all the new early hybrids. Immense open panicles with very large florets. An even shade of pink.
Own-root, strong 3 to 4 ft., \$1.50.

CLAUDE BERNARD. One of the tallest growing of these new hybrid Lilacs. Very large panicles of lace-like light pink flowers. Blooms about 6 days ahead of the regular season.
Own-root, strong 3 to 4 ft., \$1.50.

BUFFON. Single. One of the very earliest of the early hybrids. Individual florets large and of fine substance. We think Buffon very choice. Color is a rich delicate mauve-pink of the finest quality. Panicles very large.
Own-root, 3 to 4 ft., \$2.00.

VAUBAN. Double. Another of the early hybrids. The most rapid grower in all our list of Lilacs. Large plume-like panicles; delicate pink.
Own-root, 3 to 4 ft., \$1.50.

PASCAL. Single. Early. Very large thrifty bush. Medium late. Lacy delicate pink. Panicles come in great open plume-like bouquets. Very tall growing Lilac.
Own-root, 3 to 4 ft., \$1.50.

SPECIAL COMBINATION OFFER { 1 each of the above 6 early Lilacs. Value \$10.00 for **\$8.00**



12 Great Lilacs

Finer Ones Cannot Be Purchased

We are offering these in two sizes:

STRONG 2 TO 3 FT. AND STRONG 3 TO 4 FT.

All Own Root

Condorcet. A clear rich light blue.

Congo. The largest and outstanding red.

De Mirabel. A distinguished violet-blue.

Georges Bellair. Creamy white, tipped with pink.

Hippolyte Maringer. Unusually fine pinkish lilac.

Leon Gambetta. Delicate lavender flushed pink.

Marceau. Immense pure lilac-mauve.

Miss Ellen Willmott. The finest white.

Oliver de Serries. A pleasing blue-lavender.

President Loubet. Choice large double red.

President Poincare. Purplish red turning to lavender-blue.

Thunberg. Red-purple fading to lilac-mauve.

Any 6

Your choice
in the 2 to 3 ft. size

\$15.00

Any 6

Your choice
in the 3 to 4 ft. size

\$22.00

All 12

in the 2 to 3 ft. size

\$25.00

All 12

in the 3 to 4 ft. size

\$38.00



Philadelphus, Virginal.

SPECIAL PHILADELPHUS OFFER

One each of the 6 kinds listed, a total value of \$3.25.

Collection Price, \$2.25

You Save \$1.00.

Improved Philadelphus (Mock Orange or Sweet Syringa)

Wonderful improvements have been made in late years in that grand shrub, the Philadelphus; or, as it is better known to us, the Sweet Syringa or Mock Orange.

More Philadelphus should be used in shrubbery plantings. They are one of our most satisfactory shrubs, and far surpass in beauty many of the shrubs more commonly used. Our stock contains all the newest sorts.

PRICES

Each variety in a strong 3-4 ft. size, 50c each, except Virginal

BOUQUET BLANC. Flowers come in clusters; large, pure white. Very sweetly scented. One of the hardiest and most dependable bloomers. Extra choice.

GLACIER. We consider this variety one of the very best of the newest sorts. The flowers are wonderfully attractive in appearance; double blooms are produced in large clusters of six to eight, of a rich cream color.

MT. BLANC. A medium growing variety; wonderful as a hedge to grow on a line between lots. Flowers large, pure white, semi-double, produced in great profusion.

NORMA. Next to Virginal probably the most beautiful of all the Philadelphus. Flowers of great size, single, with a very rich waxy appearance.

OPHELIA. Long, arching branches, covered with great masses of large, glistening white flowers with white gold-tipped stamens. Very fragrant.

VIRGINAL. Double. White. Everblooming. Everything considered, this is the most sensational of all the Philadelphus. In fact, we regard it the most valuable acquisition to the flower garden of recent years. The bush is a moderately strong grower, with us attaining a height of six to seven feet. Rather open, sparse foliage to make the wonderful blooms all the more conspicuous. Flowers pure white, double, often two inches in diameter. Begins to bloom about June 15th with us, and blooms profusely for about three weeks. Then it rests a few weeks and starts to bloom again, continuing with a small amount of bloom until frost.

3 to 3½ ft., 75c each; 2 for \$1.40;
6 for \$3.75; 10 for \$5.00.

Oriental Poppies

For real gorgeousness—something remindful of the warm, extravagant colors of the East—nothing in all the world of flowers can compare with the Oriental Poppy. Coming with the early peonies, they give the garden a touch no other flower can give.

Because of last season's terrible drought, which continued all through the winter, we suffered the loss of almost our entire stock of Oriental Poppies. Only one variety survived. Olympia came through in perfect condition, which goes to show that this variety is entirely dependable.

OLYMPIA. A new semi-double Poppy; bright orange-scarlet. Ten days earlier than the regular run of Oriental Poppies. Something new and a Poppy that we can certainly recommend after its performance in coming through last winter as it did when all others died.

Large roots, 75c each; 2 for \$1.00, postpaid.



Oriental Poppy.

Delphinium

The Delphinium or Perennial Larkspur is one of the indispensable flowers to our flower garden. No garden is quite finished without it, as it works into so many places. It starts blooming in June and continues throughout the season until frost, if, as soon as the first bloom falls, the old spike is cut off and the root well watered. New shoots will soon appear and the second crop of blooms will soon follow. The Delphinium should be planted in full sun in mellow soil, enriched with well-rotted manure. Water as soon as planted.

WREXHAM HOLLYHOCK STRAIN. We will have a nice bed of plants for this fall's trade in this most wonderful strain from the finest seed we could procure in both England and America. Delphinium plants will go out at the proper planting season and only select plants will go into our orders. Shipments usually made in September.

Strong, 1-year, field-grown plants in assorted colors, 6 for \$1.75; 12 for \$3.00, postpaid.

Aquilegia or Columbine

Columbines are a most important part of the hardy garden, and should be grown in quantity by every lover of the old-fashioned garden.

COERULEA (Rocky Mountain Blue Columbine). One of the most beautiful of our native American flowers. Sepals deep blue; petals white. A most beautiful contrast.

DOBBIES IMPERIAL HYBRIDS. A wonderful mixture in the most beautiful colors. Contains every shade imaginable. Unequaled for their sturdiness. In England they are considered the best mixture offered today. Beautiful wide open blooms with long spurs.

SCOTT ELLIOTT LONG-SPURRED HYBRIDS. Our strain of Scott Elliott's is the very finest to be had. Beautiful clear colors in all shades. Wonderful long spurs.

Price of all Columbines: Large, field-grown plants, 35c each; any 5 for \$1.00; any 12 for \$2.25, postpaid.



Columbine.



Delphinium.

Fall-Flowering Hardy Aster

(Michaelmas Daisy or Starwort)

Provide your garden with a wealth of bloom during the months of September and October by planting a collection of late flowering Asters. These are the months when most of our flowers are past, and your garden needs color. These hardy plants grow well in any soil. We have five excellent varieties to offer our customers this fall.

CHARM. Very double violet-blue; very free bloomer.

CLIMAX. One of the best and showiest with large pyramidal spikes of large, rich lavender-blue flowers. Very free.

ERICA. Beautiful clear pink; large, semi-double flowers.

FELTHAM BLUE. A pretty aniline-blue; free blooming and very fine.

MAUVE CUSHION. Rock garden fall Aster. 9 inches high. Covered with mauve colored flowers.

Price of all Asters: 25c each; one each of the five beautiful varieties for \$1.00, postpaid. For September planting.

Lilies

Plant in any light sandy or loamy well drained soil. Well rotted cow manure should be thoroughly mixed into the soil used for planting; then top dress with the same afterwards. Do not use fresh manure. Plant 5 to 6 inches deep in a pocket of clean sand. Mulch in fall with leaves or straw.

REGALE (The Regal Lily). The hardiest of all the really fine Lilies. The most sensational Lily added to our gardens in many years. Can be grown practically anywhere in the United States in well drained soil. White, streaked with a delightful coral-pink on the outside of petals. Throat heavily touched with gold. Perfume exquisite.

3- to 4-inch bulbs, each 15c; 6 for 75c; 12 for \$1.00.
5- to 6-inch bulbs, each 25c; 3 for 60c; 12 for \$2.00.



Regal Lily.

TENUIFOLIUM (Coral Lily). This is a splendid Lily to plant for mass effect or in rock gardens. The flowers are intensely scarlet, about an inch in diameter, and produced in great quantities. The foliage is fernlike. This variety grows from one to two feet high.

Each, 25c; 3 for 60c; 12 for \$2.00.



Mauve Cushion Aster.

Perennial Seed for Fall Planting

During the course of the season as the seeds of the different flowers mature, we gather quantities of these seeds from our very choicest specimens for our own plantings. We always have some of this seed left over which we offer to our customers, who can, therefore, depend upon always receiving absolutely fresh seed from us. Planting instructions will be found on the seed packets. Plant these seeds in the early fall and nice strong blooming plants may be had next season.



Delphinium.

Delphinium

(Wrexham Strain)

In finest mixture of all shades and colors. Fresh seed will be sent out in July or August. It should be planted immediately on arrival. Order your seed now and it will be sent to you just as soon as the new crop is ripe. Delphinium seed loses its vitality very fast and the sooner it is planted after you get it, the better. Seed very carefully selected from finest specimens. **Large pkt., 25c.**

BELLADONNA. Exquisite shade of tortoise-blue. Much used in basket work. Single. **Large pkt., 20c.**

Hollyhock

Nothing so fine for a background for the garden as a plentiful planting of gorgeous Hollyhocks. Our seed will be freshly gathered from plants carrying the most gorgeous, deep, brilliant colors and also from other plants of the most delicate shades. Hollyhocks are grown best by scattering the seed in the late summer, just where you want them to grow; then don't disturb the plants.

FINEST SINGLES. In all shades, extra. **Large pkt., 25c.**

FINEST DOUBLES. Best mixture in many colors. **Large pkt., 25c.**

Hibiscus

(Mallow Marvels)

Wonderful blooms 6 inches across. Red, white, pink. **Pkt., 10c.**



Lilium Tenuifolium.

Lilies

PHILIPPINESE FORMOSANUM. Long white trumpet-shaped flowers marked reddish brown. Sow early. **Pkt., 25c.**

REGALE. Very easily grown from seed. Sow in either fall or spring. **Large pkt., 25c.**

TENUIFOLIUM (Coral Lily). Deep scarlet. Also easy to grow from seed. **Large pkt., 25c.**

Peony Seed

From the seed sent out by us this fall, there is the possibility of getting one good Peony, as good as some of these, or even a better Peony than any of these. You may originate a Peony better than anyone else has produced. This makes an interesting experiment. To a flower lover, it is the most fascinating sport in the world.

This seed will be offered in six different very desirable combinations.

- Pkt. 50 seeds selected from first class singles.....\$ 1.00
- Pkt. 50 seeds selected from first class Japanese... 1.00
- Pkt. 50 seeds selected from first class doubles, all colors 1.00
- Pkt. 50 seeds selected from first class double brilliant red 1.00
- Pkt. 50 seeds selected from first class double whites 1.00
- Pkt. 50 seeds selected from first class double pinks 1.00
- One pkt. of each of the above six, 6 pkts. for 5.00
- Very highest grade of all doubles and Japanese Peony seed, mixed, per quart 10.00

Aquilegia

(Columbine)

COERULEA (Rocky Mountain Blue). Sepals deep blue, petals white.

DOBBIE'S IMPERIAL HYBRIDS. Finest mixture in many beautiful colors.

MRS. SCOTT ELLIOTT'S. The famous long spurs in finest mixture.

Large pkt., any variety, 25c; 3 pkts., 1 of each, 60c.

Canterbury Bells

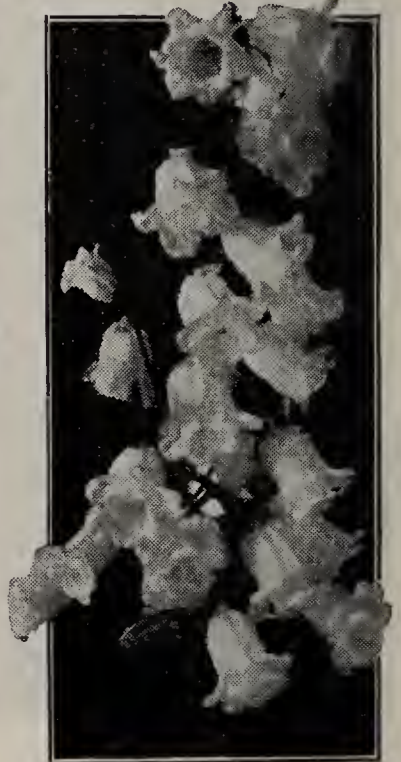
Beautiful mixture in all colors. **Pkt., 10c.**



Hibiscus.



Sweet William.



Canterbury Bell.



Peonies.

Pansy

Sow seed in late August. Fine plants by winter. Carry through winter fine. Ready to bloom in spring. Many best colors. **Pkt., 10c.**

Oriental Poppy

The gorgeous Oriental Poppy is easily grown from seed. **Pkt., 10c.**

Sweet William

(*Dianthus Barbatus*)

All colors in a splendid mixture. Very brilliant. **Pkt., 10c.**

Sweet Wivelsfield

Beautiful flowers of the Sweet William family, only much larger and prettier. Very hardy and brilliant. **Large pkt., 20c.**

Tulips

We are offering none other than strictly first size Tulips. This assures large, uniform blooms next spring. Do not be confused by cheaper prices on bulbs. This can only mean smaller bulbs; therefore smaller and less satisfactory blooms.

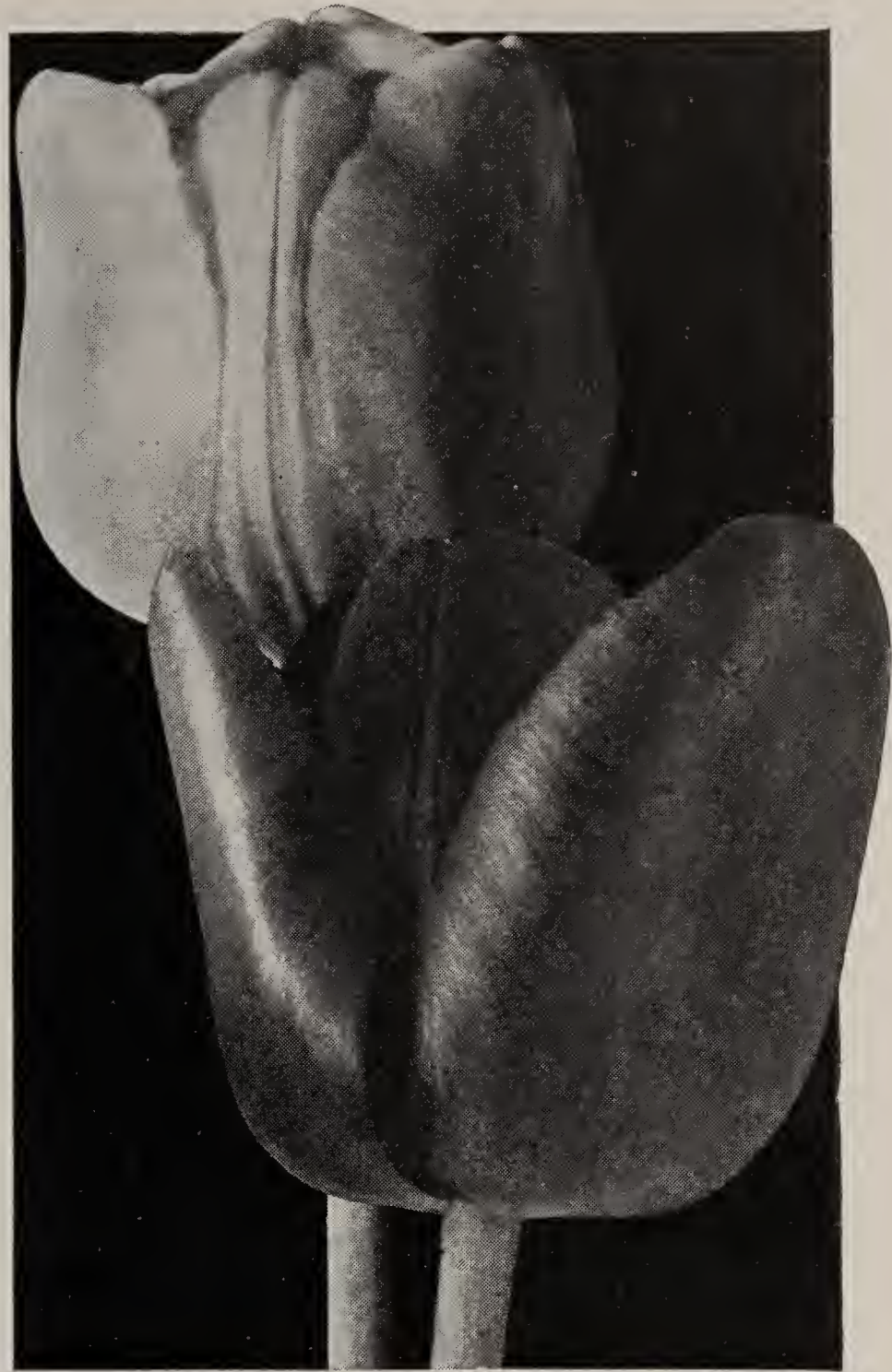
All Tulip Prices are Postpaid.

Darwin Tulips

Long-stemmed, giant-flowering Tulips in all colors; late blooming. For beds, among shrubs, for the hardy border, or as foundation planting.

Rainbow Mixture—65c per doz.; \$4.25 per 100.

	Doz.	100
Afterglow. 26 inches high; deep rosy orange, with salmon tinted edge	\$0.75	\$5.25
Baronne de la Tonnaye. 26 inches high; vivid rose-pink60	4.25
Bartigon. 22 inches high; fiery crimson-scarlet.	.60	4.25
Bleu Aimable. 24 inches high; clear lavender ..	.75	5.25
Centenaire. 26 inches high; rich violet-rose65	4.75
City of Haarlem. 28 inches high; brilliant vermilion-scarlet90	6.50
Clara Butt. 20 inches high; clear salmon-pink..	.60	4.00
Dream. 26 inches high; soft mauve and heliotrope65	4.75
Europe. 24 inches high; fiery salmon-scarlet65	4.75
Farncombe Sanders. 25 inches high; rose-scarlet60	4.25
Faust. 24 inches high; deep pansy-violet80	5.50
Gretchen. 22 inches high; pale rose60	4.25
King Harold. 24 inches high; deep ox-blood-red.	.65	4.75
La Tristesse. 24 inches high; slaty blue90	6.00
La Tulipe Noire. 24 inches high; almost black.	.65	4.75
Madame Krelage. 28 inches high; bright lilac-rose65	4.25
Pride of Haarlem. 26 inches high; brilliant rosy carmine60	4.25
Princess Elizabeth. 26 inches high; rich deep pink65	4.75
Professor Rauwenhof. 24 inches high; brilliant cherry-red65	4.75
Wm. Copeland. 22 inches high; mauve65	4.75
Rev. H. Ewbank. 20 inches high; lavender-violet60	4.25
William Pitt. 22 inches high; bright glowing carmine65	4.75
White Queen. 24 inches high; white65	4.75



Clara Butt. *La Tulipe Noire.*

May-Flowering or Cottage Tulips

Similar to the Darwins; very graceful in appearance, the blossoms being carried on long, stout stems. As there is no yellow Darwin, the May-Flowering Tulips of this color are planted with the Darwins where yellow is desired.

Rainbow Mixture—70c per doz.; \$4.75 per 100.

	Doz.	100
Bouton d'Or. Golden yellow	\$0.55	\$3.75
Fairy Queen. Heliotrope and amber-yellow..	.65	4.75
Inglescombe Pink. Soft rose-pink60	4.25
Inglescombe Scarlet. Scarlet; black base65	4.75
Inglescombe Yellow. Rich yellow65	4.75
Moonlight. Primrose-yellow75	5.25
Picotée. White; pink edge75	5.25
The Fawn. Fawn with rose65	4.75

Breeder Tulips

The Darwin's greatest rival. As tall and stately as that superb variety and even larger in size. Wonderful color combinations in harmonious blendings of purple and bronze, yellow and bronze, gray and lilac, old gold and maroon. Late to bloom; flowers are excellent for cutting, many of them being sweetly scented.

Rainbow Mixture—65c per doz.; \$4.75 per 100.

	Doz.	100
Apricot. Bronze-buff, shaded apricot	\$0.75	\$5.25
Bronze Queen. Golden bronze75	5.25
Cardinal Manning. Wine-red, orange75	5.25
Golden Bronze. Golden yellow, bronze80	5.50
Louis XIV. Bluish purple, golden bronze80	6.00
Panorama. Terra cotta, mahogany75	4.50



DOLLAR SPECIALS

All these collections postpaid in U. S. A.

\$1 **IRIS** **\$1**
Collection C

In many good and beautiful Irises, we have a larger stock than we know we will regularly sell. These come in all colors. Many people do not care for the names, just so they get nice flowers. We will send fifteen Irises—all different, all colors, all good named varieties, not labeled,

For Only \$1.00, Postpaid.

\$1 **PEONY MANUAL OFFER** **\$1**

To get our Peony Manual into the hands of the greatest number of people who do not now have it we offer:

1 Brand's Peony Manual	\$0.50
1 Prince of Darkness Peony. Red50
1 Mme. Crousse Peony. White50
1 Archie Brand Peony. Pink50
	<hr/>
	\$2.00

A Total Value of \$2.00, for \$1.00, Postpaid.

\$1 **SIBERIAN IRIS** **\$1**
Collection

Four fine Siberian Iris, all named and labeled, all different, white, light blue, medium blue, dark rich blue-purple. Wonderful Irises to plant along borders of streams, about the garden pool, or in the rock garden.

Four Select, Labeled, All Different Siberian Iris
Value \$2.00, for \$1.00, Postpaid.

\$1 **PHLOX** **\$1**
Collection C

We have many beautiful Phlox of which we have lost the names. They are all of the varieties listed in our catalog. In all colors—red, lavender, white, white with a red eye, apple-blossom-pink, salmon-pink, purple, etc.

We will send ten beautiful Phlox, all different—a total value of \$1.60.

All for \$1.00, Postpaid.

\$1 **LILIES** **\$1**
Collection C

We have some beautiful Lily bulbs in Elegans, Double Tiger, Tenuifolium, and Regale, in sizes smaller than those listed elsewhere in this catalog—small bulbs, yet all in sizes that will bloom next year:

3 Elegans	2 Tenuifolium
3 Double Tiger	2 Regale

Ten Blooming-Size Lily Bulbs for Only \$1.00, Postpaid.

\$1 **HOLLYHOCKS** **\$1**

A beautiful assortment of the very best colors in double Hollyhocks. In double pink, white, yellow, orange, red, and maroon.

Five Beautiful Hollyhocks, Double, for \$1.00, Postpaid.

\$1 **COLUMBINE** **\$1**
Collection C

Six beautiful Columbines in three great strains: The Dobbie, rich brilliant colors, great open bells; the Scott Elliott, colors of the rainbow, long, graceful spurs; the Colorado, those wonderful blues.

Six Columbines—Three Strains of Two Each—
\$1.50 Value, for \$1.00, Postpaid.

\$1 **ORIENTAL POPPY** **\$1**
Collection C

OLYMPIA. A new semi-double Poppy; bright orange-scarlet. Very nice. Ten days earlier than the rest in the list. This season this variety bloomed with us May 25th. We lost almost our entire stock of Orientals last winter by winter-killing. Olympia stood the winter perfectly. Absolutely hardy.

Two Beautiful Roots of Olympia, Value \$1.50, for \$1.00, Postpaid.

\$1 **PERENNIAL** **\$1**
Combination Offer C

Six beautiful Perennials that can be safely planted in the fall at a real bargain price.

1 Statice latifolia	\$0.25
1 Wrexham Delphinium25
1 Baby's Breath25
1 Platycodon25
2 Japanese Lantern Plant25

Six Beautiful Hardy Perennials—Value \$1.25—
for \$1.00, Postpaid.

\$1 **DARWIN TULIPS** **\$1**

Long-stemmed, giant flowering Tulips in all colors; late blooming. For beds, among shrubs, for the hardy border, or as foundation planting.

Rainbow Mixture—25 All Best Kinds and Colors—\$1.00, Postpaid.



Two Gold Medal Peonies

Hansina Brand (Brand 1925)

At the great "A Century of Progress" Chicago World's Fair American Peony Society National Show 1933, was selected from all the great flowers shown as "The Most Beautiful Flower in the Show."

**The Year Before
At Des Moines, Iowa
Another Brand Peony**

Mr. Brand's Personal Offer

One root of each
of these two Gold
Medal Peonies for
only

\$13.50

Prairie Afire (Brand 1932)

A beautiful new and entirely distinct Japanese type, was adjudged, of all the new Peonies shown, the best.

Both are Brand Peonies

For description, see pages 1 and 2.

*HANSINA BRAND.
Received the Farr
Memorial Medal of
the American Peony
Society.*

*PRAIRIE AFIRE.
Received the Boyd Memorial Medal
of the Pennsylvania Horticultural
Society.*



Greatest Lilac Offer Ever Made

Each year for several years we have offered practically this same collection to our customers and always under the heading, "Greatest Lilac Offer Ever Made." Such we believe it to be. We use this same heading because this offer is a continuing one from year to year. It is our idea to always offer 10 absolutely No. 1 Lilacs, on their own root, in the best sizes we have, at a price less than these same Lilacs are offered elsewhere, and at a price that even in times like these make them a bargain.

Ten Beautiful Named Lilacs

All different, all named, all labeled, in all colors: white, pink, lavender, blue, lilac, mauve, purple and red.

Remember all these Lilacs are on their own root.

\$8.00

Every one selected from the very best of the tried out Improved French Lilacs. All 2 to 3 and 3 to 4 feet.



Maurice de Vilmorin.

*Chas. Joly. (above).
Wm. Robinson. (below).*

Pres. Grevy.



Volcan.

These are the Varieties You Will Receive

Selected Especially for the
Beginner

Alphonse Lavallee. Double. Intense blue fading to lavender	\$1.25
Charles Joly. Double. An excellent dark red ..	1.25
Charles Sargent. Double. A rich blue-lavender ..	1.50
Jean Mace. Double. Lilac-mauve. Immense panicle	2.50
Maurice de Vilmorin. Double. General effect pink	1.50
Mme. Abel Chatenay. Double. An excellent cream white	1.25
Volcan. Single. One of the very best single reds.	2.00
Pres. Gravy. Double. A soft delicate blue	1.50
Waldeck-Rousseau. Double. Real lilac color fading to light pink	2.50
Wm. Robinson. Double. A striking pinkish red.	1.50

TOTAL VALUE	\$16.75
Taken as a collection they cost	\$8.00
You save	\$8.75

Should we run short of any of the foregoing varieties, we reserve the right to use some other variety of the same color and quality in its place.



Jean Mace.

BRAND PEONY FARMS, Inc.

Faribault, Minnesota