

Historic, archived document

Do not assume content reflects current scientific knowledge, policies, or practices.

62 73

RARE AND UNUSUAL
ROCK GARDEN PLANTS

HYBRID HEUCHERA

WILD FLOWERS

LADY SLIPPERS

HARDY PHLOX

LILIES

LIBRARY
RECEIVED



A Gold Medal Basket of Regal Lilies,
Heuchera and Delphinium

The
LEHMAN GARDENS
Faribault, Minnesota

INTRODUCTION

All plants and bulbs listed in this catalog have proven hardy with us where our winter temperature often goes to 30 degrees below zero. You can be assured that whatever plants you receive from us will be perfectly hardy for you regardless of where you live.

We are located fifty miles south of Minneapolis on Federal Highway 65.

HOW TO ORDER

We appreciate all business--no order too small or too large. Every order given equal consideration.

Remittance may be made by cash, postal, or express money order or personal check. When sending check, kindly add 5c for exchange fees.

ANOTHER 12 PER CENT SAVING

We pay the transportation charges. Over a period of three years our average transportation charge has been 12%. We prepay charges--this saving is yours. When you order from us you know exactly what your stock will cost you delivered to your door.

If it is more convenient for you to receive your plants by express we will send them to you charges collect. You may select 12% of the amount of your order in additional plants or bulbs from our list to compensate you for paying the express charges.

OUR PRICES

All the plants we send out are a finished product best suited for your success. Everything we list is field grown with a good balanced root system. Our prices are lower not because of cheapened quality, but because we eliminate costly catalogs, advertising, and general overhead expenses. Give us a trial order and if you do not think the plants are as represented return them at our expense and your money will be cheerfully refunded.

Our business the past few seasons has shown a substantial increase both in the number of orders received and in the volume of them. We wish to thank our many friends and increasing number of patrons for their valued orders, their kind letters of satisfaction, and their recommendations to friends.

Pardon us while we quote what others say:

Estelline, S. D.

I have been very much pleased with the plants and bulbs I bought of you this season, both as to quality and price, and will be wanting more from you next spring.

Yours truly,

E. F. H.

Flushing, New York

The Lily bulbs I ordered from you reached me this A. M. To say that I am well pleased with these bulbs would not be enough, they reached me in perfect condition and if I do not have wonderful success with them, I will have only myself to blame. Again let me say they are wonderful.

Respectfully yours,

G. W. R.

Portland, Ore.

The plants you sent me last fall are all growing, and I am so pleased with them. Thanking you.

Sincerely,

J. B. D.

Spoooner, Wis.

I received the Regal Lily bulbs which I ordered from you and I was so well pleased that I wish to order some for a friend of mine.

Yours truly,

Mrs. H. R.

Kansas City, Mo.

I am happy to inform you that the Sempervivums I purchased from you last fall are all alive and doing splendidly, and you may rest assured that I appreciate very much receiving such clean, healthy stock.

Yours very truly,

C. F. R. T.

Gold Medal Picture Collection

10 Regal Lily	\$1.50
10 Huechera Rosea	1.75
10 Delphenium	1.50
—	—
30	\$4.75

Sensational Value for
\$4.00

"Seven Gems" Sedum Bargain

1 Hybridum25
1 Ellecombianum25
1 Sieboldi30
1 Silver25
1 Kamtschaticum Varigated25
1 Lydium20
1 Corsicum25
—	—
7	\$1.75

All 7 for \$1.50

5 New Glorious Heuchera

1 Albatros, white35
1 Angelus Bells, coral pink35
1 Edge Hall, light pink35
1 Melody, coral pink35
1 Rain of Fire, coral red35
—	—
5	\$1.75

All 5 for \$1.50

5 New Magnificent Lilies

1 Hansonii50
1 Princeps	1.00
1 Sulphur-Gale75
1 Golden Fleece	1.00
1 Golden Fleece	1.00
—	—
5	\$3.75

One Blooming Size Bulb of Each for
\$3.25

HARDY LILIES

Since the introduction of the beautiful Regal Lily from China less than thirty years ago the interest in hardy lilies has increased tremendously and it can safely be said they are becoming the most popular of all hardy bulbs. By making only a moderate planting one may easily have lilies in bloom from June until October—what is more beautiful than a bouquet of cut lilies for the house?

Taking lilies generally, they require a bit more care than some other garden plants, but one can easily learn the simple wants of the popular varieties and enjoy them in their own garden. Practically all lilies love leaf-mold. We have found that a mixture of peat, leaf-mold and sand has given excellent results with over twenty varieties. Most varieties prefer some ground cover at the base to protect the feeding roots from excessive heat. A mulch of peat 2 or 3 inches deep is beneficial at all times. Prices are for strong flowering size bulbs.



Lily Speciosum Rubrum

Canadensis

(Canadian Lily)

Three Doz.

A very abundant native hardy lily. Stems growing from 2 to 4 feet tall carrying many graceful flowers in July. Color varies from red to orange yellow spotted brown. Loves shade and lots of moisture. Plant in spring or fall 3 inches deep. Each 15c 40 \$1.50

Candidum

(Madonna Lily)

Handsome large fragrant pure white flowers in June and July. Easy of culture. Can only be planted in July, August and September, as it makes a tuft of leaves in the fall which are very necessary. Fine northern grown bulbs freshly dug for each order. Height 3-4 feet. Plant 2-3 inches deeps. Each 30c 75 \$2.50

Plant the Madonna Lily From July to Sept.

Elegans

These hardy Japanese Lilies come in many types, forms, and colors and are adapted to planting in rockeries and perennial borders. They are of dwarf growth, early blooming, and of easiest possible culture. Very effective in large masses. We are listing the varieties which we think are the most outstanding in their respective colors. Plant in spring or fall 4 to 5 inches deep and 3 to 4 inches apart.

		Three Doz.
Leonard Joerg. Flowers upright cup shaped and of a rich bright apricot flushed scarlet. June blooming Each 20c50	\$1.75
Prince of Orange. A very dwarf form with large solitary bright orange-red flowers on 8 to 10 inch stems. A delightful variety for the rock garden. Each 15c ..	.40	\$1.35
Red Elegans. Large upright cup-shaped flowers of bright crimson orange with black dots. Very free blooming and effective in large masses. June blooming Height 15 to 18 inches. Each 15c40	\$1.35
Alice Wilson. One of the prettiest of the entire group. A very rare and beautiful little lily with clear lemon-yellow flowers in June. Fine lily for the rockery. Plant in spring or fall 4-6 inches deep. Height 20 inches. Each 50c.	1.25	\$4.50

Hansonii

This is easily one of the best five lilies in cultivation. It is beautiful, easily grown, robust, and permanent. The stems reach a height of 3 to 4 feet and carry six to ten slightly reflexed fragrant yellow flowers with thick waxy petals. Blooms in late June and July. Plant 5 to 6 inches deep. Strong flowering size bulbs for fall delivery. Each 50c

		1.25	\$4.00
--	--	------	--------

Henryi

(Orange Speciosum)

A beautiful late blooming lily from the mountains of China. Does well in sun or shade, but color is a little better in partial shade. Flowers are orange-yellow banded with green. Blooms in August and September. Bulbs are very large and should be planted in spring or fall 8-10 inches deep. Height 4-6 feet. Each 35c

		1.00	\$3.50
--	--	------	--------

Pardalinum

(Leopard Lily)

Very showy strong growing lily with whorls of dark green leaves and clusters of recurved flowers on a 4-5 foot stalk. The blossoms are variable but usually deep orange, with maroon spots, the tips of the petals being a rich scarlet. The bulbs are curiously formed mats of short scaled crowns. Frequently takes two years to become established. Plant in fall 5 inches deep. Each 35c

		.90	\$3.50
--	--	-----	--------

Regale

Without doubt the finest of all hardy lilies and should be found in quantities in all gardens. No garden is complete without it. It is very hardy, easy of culture, free flowering and permanent. Does well anywhere. The large funnel shaped, very fragrant flowers are produced in July. The flowers are white slightly suffused with pink, with a golden center. Plant in spring or fall 6-8 inches deep. Height 4-6 feet.

Blooming Size			
4-5 inch circumference. Each 10c25	\$1.00

Strong Flowering Size			
5-7 inch circumference. Each 20c50	\$1.75

Mammoth Flowering Size

These mammoth 5 year old bulbs should produce from ten to twelve strong gorgeous flowers the first year after planting. Can be supplied in fall only. 10-12 inch circumference. Each 35c

		1.00	\$3.00
--	--	------	--------

Don't Forget To Add Regal Lilies

PRINCEPS

A new hybrid lily from Canada and in our estimation one of the finest lilies introduced in recent years. A cross between Regale and Sargentiae and we think it superior to either parent. The immense trumpets are larger and purer than those of regale with less purple on the outside of the buds. Blooms in late July, thus extending the flowering period of Regale almost a month. Strong sturdy constitution and when established one stalk will carry 15 to 20 immense flowers. The lily of tomorrow. Stock very limited so we suggest you order early. Stems rooting plant 5-6 inches deep. Fine flowering bulbs. Each \$1.00 3.00

Speciosum

This beautiful lily is deservedly one of the greatest garden favorites. It is hardy, free flowering, and dependable blooming in August and September. One of the finest border lilies. Color is frosted white, spotted, clouded, and bordered with pinkish crimson. Plant in spring or fall 5-6 inches deep in leaf-mold soil. Height 4-6 feet. Each 50c 1.25 \$4.00

Sulphur-Gale

Another fine new hybrid lily which extends the flowering period of the Regale. A cross between Sulphureum and Regale. Because of its parentage needs covering in the north. The immense trumpet shaped flowers are white shaded yellow within and the outside is tinted brownish red. July blooming. Plant 5-6 inches deep in well drained soil. Fine flowering bulbs. Each 75c 2.00

Superbum

(Turk's Cap Lily)

The most showy of all north American lilies. The strong stem will carry thirty or more handsome flowers of a bright reddish-orange with dark spots. Blooms in July. Plant in leaf-mold either in spring or fall about 4 inches deep. Each 20c50 \$1.75

Tenuifolium

(Coral Lily)

This is perhaps the best lily we have for the rock garden. It is a native of Siberia and therefore very hardy. The slender stems are one to two feet high; the leaves are scattered and grass-like in their narrowness. The brilliant scarlet flowers are drooping, reflexed, waxy, fragrant, and about 2 inches in diameter. Requires a light sandy soil with good drainage and enjoys part shade. Plant 2-4 inches deep in spring or fall. Each 15c40 \$1.50

5 Lily Aristocrats

3 Henryi	\$1.00
3 Regal50
3 Speciosum	1.25
3 Tenuifolium40
3 Umbellatum Grandiflorum60
<hr/>	<hr/>
15	\$3.75

15 Large Blooming Size Bulbs

For \$3.25

A Rare Bargain

Three Doz.

Tigrinum

(Tiger Lily)

To well known to need description. Very easily grown and attractive in the perennial border. The color is orange-red, spotted purple. Blooms during August and September. Plant in spring or fall 5-6 inches deep. Height 4-6 feet. Each 15c40 \$1.50

Tigrinum Flora Plena. Like the single in all respects, excepting not quite so tall and that the flowers are double. Height 4-6 feet. Each 15c.40 \$1.50

Umbellatum

A very hardy lily native of Siberia of easy culture and succeeding under a wide range of conditions. The large and showy upright cup shaped flowers are very effective and colorful in the border. June and July flowering. Plant in spring or fall 5 to 6 inches deep.

Grandiflorum. Massive blooms of upright flowers which are six inches across. Color bright orange, flushed red and slightly spotted black. Blooming in late June. Very robust. Height 3 to 4 feet. Each 25c .60 \$2.00

Golden Fleece. A superb variety. Large umbellate heads of golden yellow flowers. Vigorous and very effective. A startling novelty. Fine flowering size bulbs. Each \$1.00 2.00

Mahony. A very large glistening dark red with no orange tint. A very distinct variety possessing a strong constitution. Must be seen to be appreciated. Each 35c 1.00 \$3.50

Umbellatum Red. A very hardy variety of unknown name. Of easiest possible culture. Orange-red flowers in upright umbels strongly resembling *L. Elegans* but larger. Flowers in June. Plant in spring or fall 5 to 6 inches deep. Height 24 inches. Each 15c40 \$1.50

Willmottiae

A rare hardy lily from central China blooming in July with graceful stems 3 to 5 feet high carrying many vivid orange-red flowers spotted brown. Often needs staking in the open as the great clusters of flowers are too heavy for the slender stem to hold erect. A splendid and scarce lily. Plant in fall or spring 6-8 inches deep. Each 50c 1.50 \$5.00

REGAL LILY SEED

This Lily is very easy to grow from seed which should be sown in early spring in a well pulverized bed about 1 inch deep. Cover with burlap and keep well watered until seeds germinate. With good care some should bloom the second year.

Packet of 1,000 seeds25c

Godsden, Ala.

I was well pleased with the Henryi Lily bulbs I bought from you. Very truly,
Mrs. G. C. A.

Holdrege, Neb.

Last fall I bought from you eight Regal Lily bulbs. I was much pleased with the bulbs and wishing to plant a rock garden in the spring.

Yours sincerely,
Mrs. E. J. H.

Oneonta, N. Y.

Last fall I ordered your collection of Regal Lily bulbs and I was so pleased with them when they came that I am sending you another order for them and want you to mail them to a friend for a birthday gift.

Yours truly,
Mrs. L. F. S.

ROCK GARDEN PLANTS

On the following pages you will find a list of Rock Plants that are well adapted to even the coldest parts of the country as every item is northern grown and has proven its adaptability to this region. Many varieties commonly called rock plants make excellent edging plants for the perennial border or shrubbery planting.



A Part of Our Rockery

Achillea

	Three	Doz.
Tomentosa. A wooly, carpet-like plant with finely cut foliage covered in Aug. and Sept. with bright yellow flowers. Excellent rock plant. Height 6-8 inches	.50	\$1.50

Alyssum

Saxatile (Goldentuft). One of the very best and most easily grown of all the early flowering perennials for the rock wall or rock garden. Covered in April with a mass of golden yellow flowers. Does well in ordinary soil well drained. Shows to best advantage in groups among rocks. Plant either in fall or spring. Height 8 to 10 inches	.50	\$1.75
Rostratum. Flowers later than saxatile over a long period. Straw yellow in color. Foliage silver gray. Shrub-like plant 8-10 inches tall. Each 25c	.60	\$2.00

Ajuga

Reptan. Masses of glossy dark green foliage throughout the summer. Dark blue flowers in June and July. Indispensable for a quick ground cover in bare spots. Prefers partial shade but does well in sun if given fairly rich soil. Height 3-4 inches. Plant in spring or fall 6 inches apart. Each 20c	.50	\$1.50
Reptans Variegata. A rare novelty like the above but having leaves splashed and edged creamy yellow. Each 25c.	.60	\$2.00

Arabis

Alpina (Rock Cress). Heads of pure white flowers produced in dense masses in April. Ordinary soil that is not too damp is best for Rock Cress. Does well in dry rock walls. Plant in fall or spring 6 inches apart. Cut back after flowering to keep foliage neat and attractive. Height 6 inches.	.50	\$1.75
---	-----	--------

Arenaria

Montana (Moss Sandwort). Without a doubt the most lovely plant to use in filling the crevices between stepping stones. The bright green trailing mound-like foliage is covered with white star shaped flowers in May and June. Requires light sandy soil in sunny location. Height 4-6 inches. Each 30c	.75	\$2.50
--	-----	--------

Three Doz.

Aster

Alpinus. A very satisfactory and easily grown perennial for the rock garden which produces rose-purple flowers in June and continues all summer. Most attractive in clumps and can be planted either in fall or spring. Height 6-8 inches. Each 15c40 \$1.35

Goliath. Very large purplish daisy-like flowers with golden centers on 12 inch stems. Blooms in May and June. Excellent in rock garden or in front of hardy border.50 \$1.75

Mauve Cushion. Hardy Japanese specie forming round cushion-like plants 2 feet across and 6 to 8 inches high. Completely covered with mauve colored flowers during Oct. and Nov. Plant in full sun.50 \$1.75

CAMPANULA

Indispensable plants for every rockery and border. Perhaps one of the most popular species. They do well in ordinary rich soil and enjoy a cool or partly shaded spot. They should be lifted and divided every second year to insure free blooming.

Carpatica. A very pretty plant growing in compact tufts and holding the many large blue bell-shaped flowers erect on wiry stems. A mass of color all summer. Plant in spring or fall about 8 inches apart. Height 8-10 inches Each 25c60 \$2.00

Garganica. Compact rosettes of shiny foliage with trailing stems covered completely with lavender blue star-shaped flowers with white eye. Excellent rock plant. Height 4 inches. Each 35c 1.00 \$3.50

Pussila. Considered the hardiest low-growing alpine bellflower. Beautiful compact, dense mats of green leaves. Dainty nodding pale-blue flowers on 4 inch stems from June to Sept. A real beauty. Plant in spring or fall. Each 35c 1.00 \$3.50

Rotundifolia. Very fine to use in poor soil and crevices between rocks or steep slope so as to show its pendant habit and color. Color blue. Plant in spring or fall 10 inches apart. Height 12 inches.50 \$1.75

Cerastium

Tomentosum (Snow-in-Summer). Use in bold masses in rock garden or rock wall in ordinary soil in full sun. Low growing perennial with beautiful silvery white foliage covered with snow white flowers in May. Plant in spring or fall 10 inches apart.50 \$1.75

Convallaria

(Lily of the Valley)

Everyone knows and loves the lily of the valley with its dainty white bell shaped flowers and sweet perfume. Does well in almost any soil but prefers a rich soil well fertilized. Does best in a shady place. Can be planted in fall or spring. Each 15c40 \$1.50

Dianthus

These old time favorite perennials with their rich colors and spicy fragrance are excellent for the rockery. No rock garden is complete without at least a few varieties of these beautiful flowers that add beauty that is permanent, as they live on from year to year. They do best in a dry light sandy soil. Plant in the spring or fall about 8 inches apart.

Arenarius (Sand Loving Pink). This pink delights in a sandy soil and sun. Flowers white with carmine ring on 5 inch stems, deeply fringed and fragrant. Excellent for dry, hot places.50 \$1.75

Arvensis. A true alpine gem which we consider to be the finest Dianthus for the Rockery. Very flat mats of silvery green foliage at all seasons. Bright pink flowers on 3 inch stems. Charming among the rocks. You must have it. Plant spring or fall 5 inches apart. Each 35c.. .90 \$3.50

The LEHMAN GARDENS, FARIBAULT, MINN.

Deltoides (Maiden Pink). An easily grown and most beautiful prostrate plant for the rockery. Small rose colored flowers in profusion in June and July. Should be in every rockery. Height 6 inches.50 \$1.75

D. Plumarius (Pheasant's Eye Pink). A universal favorite of the pink family. Spicy fragrant rose-pink and white flowers all summer on 1 foot stems. Excellent for the rockery and front of border. Plant in spring or fall 8 inches apart.50 \$1.75

Funkia

Lancifolia (Plantainlily). The leaves form a symmetrical rosette from which the flowering stems carrying many lily-like blue flowers appear in August and September. Excellent plants to be grown in rich soil in partially shaded rockeries or on the margins of water. One of the best edging plants. Height 12 inches.50 \$1.75

Variegata. Like the above but having beautiful leaves margined deep green with a creamy white center. Excellent around pools or as a border to a walk. Will thrive and bloom nicely in the shade on the north side of a building.50 \$1.75

Subcordata Grandiflora. Fragrant waxy white lily-like flowers in Aug. and Sept. Large dark green glossy leaves make a complete mound. Fine for specimen plant around a lily pool in large rockery. Succeeds best in rich soil in partial shade. Each 25c.60 \$2.00

Festuca

Glauc (Blue Fescue Grass). A group of this interesting grass adds delightful contrast to the rock garden. The very narrow bluish leaves grow in dense tufts 12 to 15 inches high.50 \$1.75

Gypsophila

(Creeping Baby's Breath)

Repens. A dainty creeping plant for the rockery hidden by the clouds of small starry white flowers in July and August. The Gypsophila is a lime loving plant and must be grown in full sun in light soil. A splendid rock plant. Plant 8 inches apart either fall or spring. Each 25c.60 \$2.00

Hepatica

Acutiloba (Liverleaf). A very early native flowering plant well suited for the rockery. Plant in rich humus soil and shade. Does well on north or east slopes of rockery. The lavender or blue anemone like flowers appear in April. Plant in early spring or fall 6 inches apart. Height 4-6 inches. Large clumps with 6-8 flowering crowns. Each 15c.40 \$1.25

Iris

Pumila (Baby Iris). Invaluable for planting in groups in the rock garden or edging the hardy border. Grow rapidly and produce many flowers on 6 to 8 inch stems in April and May. Mixed colors—blue, purple, yellow, and white. Each 10c.25 .75

Lily Elegans

See lily section. Each 15c.40 \$1.35

L. Tenuifolium

See lily sections. Each 15c.40 \$1.35

Lysimachia

(Creeping Jenny)

Nummularia. A valuable ground cover for moist places in shade or sun. Fine to use among ferns or shrubbery. Pretty glossy green foliage with yellow flowers from May to Sept. Height 2 inches.50 \$1.50

Mertensia

Virginica (Bluebells). Drooping clusters of pink buds changing to beautiful blue flowers in May. Perhaps the bluest and daintiest of all spring blooming flowers. Does well in ordinary moist soil in partial shade. Fine planted under trees. Plant tubers in fall or very early spring 2 inches deep and 4 inches apart. Height 12 inches. Each 20c.50 \$1.75

You Should Have Mertensia

Saponaria

Ocymoides (Rock Soapwort). A showy dwarf trailing plant well suited to rock garden or rock wall. Quantities of rosy pink flowers produced just above the foliage in May and June. Plant in spring or fall 6 inches apart. Three Doz. .50 \$1.75

PHLOX

Anoena. This is one of the best varieties for carpeting the ground, the rockery or the border. It grows but 4 inches high, and in the spring is a sheet of rich bright pink flowers.50 \$1.50

Divaricata Canadensis. Our native lavender-blue wood phlox. A showy, easily grown free flowering native for the rock garden or semi-shaded border. Trailing dark green glossy foliage covered in May and June with multitudes of fragrant lavender flowers. A nice plant to use with darwin tulips. Height 10 to 12 inches. Each 15c.40 \$1.35



Phlox Subulata in Rockery

Subulata
(Moss Pink)

Invaluable plants for the rockery with their pretty moss-like evergreen foliage that during April and May is hidden by an avalanche of blossoms in white, pink and lilac. All varieties of phlox subulata should be grown in a dry location with full sunlight. A few of each color should be in every rockery. Plant in very early spring or fall 6-8 inches apart.

Alba (Pure White). Flowers completely cover the compact plants in May.50 \$1.75

Lilacina. A robust creeping variety fine for bold masses in the rockery. Rose magenta flowers in May. Evergreen foliage—pretty in winter.50 \$1.75

Backbone Collection

- 3 Alyssum Saxatile, April\$.50
- 3 Campanula Carpatica, all summer60
- 3 Dianthus Deltoides, June and July50
- 3 Dianthus Plumarius, all summer50
- 3 Heuchers Rosea, July and Aug.60
- 3 Lily Elegans, June40
- 3 Phlox Sublata Rosea, April and May50
- 3 Sedum Acre, July50
- 3 Sedum Spectabilis, Aug. and Sept.50
- 3 Sempervivum Tectorum, August50

Regular Price\$5.10

For \$3.75!

One each of above collection of 10 plants...\$1.35

SEDUM

(Stonecrop)

The backbone of the rock garden and deservedly so because of their varied habits of growth and perhaps the easiest of all plants to grow. Some varieties will succeed where little else will thrive, while others with evergreen foliage give the rockery its only sign of life during the long winter.

	Three	Doz.
Acre (Golden Moss). This is everybody's plant. Much used for covering dry banks and a fine ground covering for bulbs. The little fleshy plant with bright green foliage is low growing and slowly spreading. The star-shaped yellow flowers are produced in great quantities in July40	\$1.35
Aizoon . An old garden plant from Siberia. Yellow flowers in July in loose panicles on stems 12 inches high.50	\$1.75
Album . Dwarf, slow spreading variety with thick waxy round foliage and white star shaped flowers in July. A fine rock plant. Height 4 inches.50	\$1.50
Cersicum . Close set gray beady clumps much hardier than <i>Dasyphyllum</i> . Flowers pink. Height 2 to 3 inches. Each 25c.60	\$2.00
Hybridum . A fine trailing variety from China. Evergreen, serrated leaves. Yellow flowers. One of the finest sedums for winter and spring effect when foliage takes on brilliant colors. Each 25c60	\$2.00

A
ROCKERY
PLANTING



Ellacombianum . One of the newer Sedums taking on glorious colors in autumn. The small bushy plants appear as brilliant green mats of rosettes in spring. Yellow flowers in July. Exceptionally fine. Each 25c60	\$2.00
Kamschaticum (Orange Stonecrop). Orange yellow flowers in summer, a small bushy plant about 6 inches tall. Good for fresh green foliage effect in summer which turns golden in autumn.50	\$1.75
Kamtschaticum Variegated . Handsome variegated foliage effect of green and gold with orange-yellow flowers. Beautiful foliage gives the rock garden color all summer. Exceptionally fine. Each 25c60	\$2.00
Lydium . A prostrate plant with bronze moss like evergreen foliage and pinkish flowers. Spreads slowly forming pretty mats of green 1 to 3 inches high. Foliage turns red in fall. One of the best sedums.50	\$1.75

	Three	Doz.
Reflexum. Dwarf trailing variety with fleshy green foliage. One of the best ground covering sedums. Yellow flowering, stems growing 6 to 8 inches high. Each 15c.40	\$1.35
Eupestre. Semi-trailing stems with linear leaves which take on beautiful coloring. Plants resemble little blue spruce trees tinted with red. Yellow flowers. Height 3 inches.50	\$1.75
Sarmentosum (Striking Sedum). A rapid growing trailing variety with fine green foliage and small yellow flowers. Excellent for use in the dry rock wall or growing over the face of a rock.40	\$1.35
Sexangulaire. Much like acre but darker green and smaller foliage. Flowers yellow in July.50	\$1.50

Sieboldi. The loveliest of all Sedums with its slender arching stems and bright deep pink flowers in cymes. The leaves are bluish-green with pinkish margins and come in whorls of three. By all means include this in your rockery. More tender than some varieties but hardy here. Height 6-8 inches. Each 30c75	\$2.50
Silver (Species unknown). Without a doubt the finest blue-green cushion type of Sedum known. Blue moss-like cushions 1-2 inches thick making perfect mounds. Perhaps a glaucous form of Lydium. You must have it! Each 25c60	\$2.00

Spectabile. Indispensable in the rockery or border with its massive heads of upright rose colored flowers in August and September. A pretty companion plant with almost anything as the foliage is attractive at



A
NATURAL
SCENE

all seasons. The showiest of all sedums—does well in sun or shade and perhaps the easiest of all to grow. Height 12-18 inches.50	\$1.75
Spectabile Brilliant. Like the above in every respect excepting that the color of the flowers are a bright amaranth-red.50	\$1.75
Spectabile Varigata. A form of spectabilis with leaves striped with green and cream. Showy at all seasons and worthy of a place in the rock garden.50	\$1.75
Spurium (Running Stone Crop). A trailing variety much prized for its rose-colored flowers produced all summer. Spreads slowly, rooting as it goes. As cool weather approaches the entire plant assumes a blood-red color which is retained all winter. Height 2 in.50	\$1.75
Stoloniferum. Bushy plants with bright green leaves on reddish stems. Pink flowers. Not spreading, fine for edging. Height 5 inches.50	\$1.75

We Prepay All Transportation Charges

The LEHMAN GARDENS, FARIBAULT, MINN.

SEMPERVIVUM

(Hen and Chicken)

A rock garden without at least a few sempervivum can hardly be imagined. Their unique loveliness is appreciated by all. The little succulent plants are well adapted to filling in crevices among the rocks and the rosette-like thick leaves are very showy. Do best in a medium well drained sandy soil in full sun and can be planted either in spring or fall 4-6 inches apart.

	Three	Doz.
Amber Green. Very large rosettes 5 to 6 inches in diameter of a gray green color with amber shadings. Outstandingly good. Each 25c.60	\$2.00
Arachnoideum Lagerii. Flattened rosettes from 1½ to 2 inches in diameter. The largest of the cobwebbed group. Considerable red coloring in the foliage. Fine variety.50	\$1.75
Arachnoideum (Cobweb Houseleek). So called because the small green rosette of leaves are connected by silvery thread-like hairs. Star shaped rose-colored flowers in July. Height 4 inches.50	\$1.75
Arenarium. A true midget with tiny ½ inch rosettes. Forms cushions of many very small brownish green rosettes. Fine to use where tiny plants are desired. Each 15c.40	\$1.50

Emerald Giant. A new variety growing to 5 and 6 inches in diameter. Heavy compact rosettes. The all green color changing but little in winter. If you are making a collection of Sempervivums you should have this one. Each 30c..	.75	\$2.50
---	-----	--------

Blandum. A quick growing green colored variety soon building fine clusters of chickens. Mature rosettes 2 to 3 inches in diameter. Each 15c.40	\$1.50
--	-----	--------

Brauni. Medium sized rosettes with tips and outer leaves bronze to dull red shading to dull green at the base. One of the best.50	\$1.75
---	-----	--------

Doellianum. Hairy rosettes ½ to 1 inch in diameter freely produced, light green with bronze markings. Tips of petals connected with few silvery threads. Flowering stems 4 to 6 inches high and bright red. Native of Switzerland. Each 15c.40	\$1.50
--	-----	--------

<h3>New Sempervivum Collection</h3>	
1 Amber Green25
1 Emerald Giant30
1 Royanum35
1 Rubicundum Hybridum25
4	\$1.15
<h3>Special for \$1.00</h3>	

Funcki. Rosettes 2 to 3 inches in diameter and of reddish brown color tipped green. Colonizes quickly. Flowers reddish-purple on a 6 to 8 inch stem.50	\$1.75
--	-----	--------

Globiferum. Rosettes flattened 2 to 3 inches in diameter and of a gray green color. Flowering stems 10 inches high and pale yellow in color. Native of Russia.50	\$1.75
--	-----	--------

Mixed Hybrids. This mixture contains every conceivable type and variety. All being named varieties which became mixed in handling or the variety name lost. All are worthy of growing in the rock garden. By ordering these by the dozen you can have a rock garden full of Hens and Chicks for little outlay of money. Each 10c.25	\$1.00
---	-----	--------

Royanum. Six inches. Might be described as a glorified Tectorum. Light green almost yellowish green during growing season. The decided coloring on tips of foliage make a fine contrast in color. One of the very best. Each 35c...	1.00	\$3.50
--	------	--------

Hen and Chickens Add Contrast

Three Doz.

Rubicundum Hybridum. A most beautiful large and striking Sempervivum. Under good conditions grows to 4 inches in diameter. Inner base of rosettes deep red with green margins. Very striking. Each 25c60	\$2.00
---	-----	--------

Soboliferum. Mature rosettes 1 to 2 inches in diameter. Dull green with brown tips. New rosettes detached easily and take root about the parent soon forming a large colony. A very interesting Sempervivum. Native to the mountains of Austria. Each 15c.

	.40	\$1.50
--	-----	--------

Tectorum. Perhaps the commonest and best of all sempervivums. Broad rosettes of green with reddish tips. Flowers pale red on fleshy stems. Height 12 in.

	.50	\$1.75
--	-----	--------

Statis Latifolia

(See Lavender)

Evergreen tufts of thick leathery leaves from which spring the flowering shoots with sprays of thousands of small lavender colored flowers in July and Aug. The flowers can be cut and dried for winter use. A sandy soil in full sun is essential. A fine plant for either border or rockery. Plant in fall or spring 10 inches apart. Height 15 inches.

	.50	\$1.75
--	-----	--------

Veronica

(Speedwell)

Corymbosa Stricta. A fine new variety with prostrate tufts of foliage. Dense plumes of azure blue flowers on 6 inch stems in summer. Plant spring or fall 6 inches apart in sunny location.

	.50	\$1.75
--	-----	--------

Rupestris. Smothered in June with many bright blue flowers. Foliage thick mats of dark green prostrate leaves 1 inch high. Plant in ordinary soil in spring or fall 8 inches apart. Excellent ground cover among rocks.

	.50	\$1.75
--	-----	--------

HEUCHERA

(Coralbell)

These charming "Fairy Flowers" are indispensable in the modern garden. They are desirable for the hardy border, are without a rival when bordering walks and paths, and are excellent in the rock garden. When used as an edging to a lily pool their delicate coloring and airy grace, from early spring to autumn, is almost beyond description. As lasting cut flowers to lighten up a heavy bouquet they are unsurpassed.

The bonze-tinted green, heart shaped leaves grow in neat tufts and help to make it a desirable plant at all seasons. Heuchera thrive best in rich well-drained loam in a sunny position. Plant in spring or fall eight inches apart.

Albatross

Has pure white flowers in graceful panicles which harmonize well with the pink and red shades. Each 35c

	.90	\$3.00
--	-----	--------

Angelus Bells

Charming sprays of medium coral-pink flowers on 18-24 inch stems. Is a strong grower and one of the most desirable. Each 35c.

	.90	\$3.00
--	-----	--------

Edge Hall

Light pink sprays of dainty flowers on dwarfed stems. Height 15-18 inches. A fine variety for edging and lovely in the rock garden. Each 35c

	.90	\$3.00
--	-----	--------

Melody

A taller variety producing many sprays of light coral pink flowers. It is an abundant bloomer and is fine for massing and giving color to the border over a large period. Each 35c.

	.90	\$3.00
--	-----	--------

Rain of Fire

Strong coral-red bells blooming over two months. Very desirable. Each 35c.

	.90	\$3.00
--	-----	--------

Rosea

The dainty rose-colored sprays of flowers add grace to the rockery or border most of the summer. The flowers are well adapted to cutting. Height 15-18 inches. Each 25c.

	.60	\$2.00
--	-----	--------

Sanguinea

Tufts of heart-shaped leaves from which a dozen or more graceful sprays of dainty bright crimson flowers appear most of the summer. Height 15-18 inches. Each 25c.

	.60	\$2.00
--	-----	--------

You Should Have The New Heucheras

NATIVE WILD FLOWER

Three Doz.

Adiantum

pedatum (Maidenhair Fern). The most graceful of all hardy ferns. Should be protected from winds and given a moist rich soil. Plant in spring or fall 8 inches apart Each 15c40 \$1.50

Anemone

(Pasque Flower)

patens. Our first flower of spring and often found blooming before the last snow is gone. The tulip-like lavender flowers are produced above a tuft of finely cut foliage. Belongs in a light sandy soil in full sun. Fine for the rockery. Plant in very early spring or fall. Fine large clumps. Each 20c50 \$1.75

Aquilegia

Canadensis (Columbine). A native columbine growing on dry rocky ledges in partial shade. Produces many scarlet and yellow flowers in May and June on plants 18 inches tall. Plant in spring or fall. Each 20c50 \$1.75

Arisaema

trichophyllum (Jack in the Pulpit). Interesting in the wild garden and of the easiest culture. The spathe is light green, more or less striped with brown. Bloom in April and May. Large pods of bright red berries remain after the leaves die. Does well in moist dense shade. Plant in fall. Each 15c40 \$1.50

Caltha

(Marsh Marigold)

palustris. Heart shaped deep green leaves and golden flowers in May and June. Usually found along streams or in boggy meadows. Does well in rich garden soil. Plant in spring. Each 20c50 \$1.50

Dicentra

cucullaria (Dutchman's Breeches). Finely divided leaves and white flowers in long racemes resembling a small white Bleeding Heart. Blooms in April. Plant small bulbs 2 inches deep in fall. Loves a rich sandy soil and shade. Plant in fall. Each 10c25 .75

A Complete Wild Garden

3 Lady Slippers90
3 Mertensia50
3 Jack in the Pulpit40
3 Dutchman's Breeches25
3 Maidenhair Fern40
3 Bloodroot40
3 Trillium40
3 Hepatica40
24 Plants Regular value	\$3.65

for \$3.00

Benton Harbor, Michigan

The twelve Lady Slipper plants you sent me arrived in splendid condition, and they are very fine.

Very truly yours,
R. F. M.

Maysville, Maryland

I was so well pleased with the Yellow Lady Slipper that you sent me—and sending another order out of your list which reached me yesterday.

Thanking you,
Mrs. A. O. T.

LADY SLIPPERS

(Cypripedium)

Our much loved hardy native orchids which have sprung into popular favor the last few years for naturalizing in woodlands and for use in the rockery.

They love a cool moist shaded spot with soil that has a good portion of leaf mold or peat mixed in. Once planted they need little or no attention, excepting to be watered during prolonged dry spells. A mulch of 2 or 3 inches of leaves is advisable during the winter which can be left on to rot in the spring; thus keeping up a constant supply of leaf-mold over the crowns. A very striking picture can be made by planting them in colonies among ferns using spectabilis in the rear, pubescens in the middle and acaule in the front.

Planting can be successfully done in fall or very early spring while the plants are dormant. Plant in colonies 6-8 inches apart.

Acaule

(Lady Slipper—Moccasin Flower)

Three Doz.

The plant sends out two leaves at the ground level from which the flower stalk grows 8-10 inches high. The slipper-like flowers appear in May and are pink-purple in color. The first Lady Slipper to bloom. Each 25c.

.60 \$2.00

Pubescens

(Yellow Lady Slipper)

The most widely planted of all hardy orchids and perhaps the easiest to grow. Does well in any partly shaded location that is moist. A beautiful thing to use along streams or beside pools in the rockery. The slipper-like flowers are a rich golden yellow with reddish-purple petals. Blooms in late May and June. Height 12-18 inches. Strong clumps. Each 35c.

.90 \$3.00

Spectabile

(Showy Lady Slipper)

The grandest of all the Lady Slippers and one of the rare plants as the supply is always short of the demand. The great leafy stems grow to a height of about 2 feet and bear two or more flowers which are rose-pink and white in color. A large colony of this variety in bloom among hardy ferns is a sight not soon to be forgotten. Clumps. Each 50c.

1.25 \$4.00

HEPATICA Acutiloba. See Rock Garden Section.

MERTENSIA Virginica. See Rock Garden Section.

PHLOX Divaricata. See Rock Garden Section.

Bargain Lady Slipper Collection

3 Acule, pink60
3 Pubescens, yellow90
3 Spectabile, showy pink	1.25
9	<u>\$2.75</u>

9 for \$2.50

The LEHMAN GARDENS, FARIBAULT, MINN.

Polygonatum (Solomon's Seal)

Biflorum. An attractive plant used largely for its foliage effect. Arching leafy stalks growing 24-30 inches tall with berries hanging in pairs from the under side of the stem. A clump overhanging a pool creates a pretty picture. Prefers shade and rich soil. Each 20c

	Three Doz.
.50	\$1.50

Sanguinaria

Canadensis (Bloodroot). Pure white flowers with a small yellow center. The pointed buds and white flowers appear very early and come clasped by the unfolding leaves. Plant roots 1 inch deep in leaf mold soil in light shade in the fall. Each 15c

.40	\$1.50
-----	--------

Sagittaria (Arrowhead)

The beautiful arrowhead shaped leaves of deep shining green add much to the lily pool. Flowers pure white with golden centers. Blooms from July to Sept. Does well in the bog garden or planted in tubs or pails in the lily pool. Attractive all summer. Plant in spring. Each 20c

.50	\$1.50
-----	--------

Smilacina

(False Solomon's Seal)

Stellata. A useful and easily grown plant to use with ferns in shade with its arching stems of deep green foliage and clusters of white flowers followed by brown berries. Each 15c

.40	\$1.35
-----	--------

Trillium

Grandiflorum (Wake Robin). The most showy of our native early spring blooming flowers. The waxy three petaled flowers appear pure white changing to pink as the flowers age. Needs rich moist soil and shade. Plant tubers 2 inches deep in fall. Each 15c

.40	\$1.50
-----	--------

Typha

(Cat-tail)

The common cat-tail of our marshes. Does well in or about a lily pool. If used in a pool, they should be planted in a pail or tub. The foliage effect gives that natural grace to a lily pool. Plant in spring. Each 20c

.50	\$1.50
-----	--------

Viola

(Violet)

Pedate (Birds foot violet). A violet fond of sandy well drained soil and full sun. Produces many pansy like flowers in shades of lavender and purple. Ideal for massing in sunny rock garden. Each 15c

.40	\$1.35
-----	--------

Cucullata (Wood Violet). The common violet of our woods. A tuft of large heart shaped leaves from which many purple sweet scented flowers spring. Plant in rich moist soil in sun or shade. Each 10c

.25	\$1.00
-----	--------

HARDY FERNS

Our hardy native ferns have become very popular of recent years to fill in those places about our home where the ordinary shrubs and flowers will not thrive. The cool north exposure of a home, the shaded rock garden, or the native flower bed isn't complete unless it contains a planting of hardy ferns for a background.

The ferns we list require a shaded cool location and relish a rich soil that has leaf-mold or peat worked in. Planting can be done in spring or fall.

Ostrich Fern. One of the most stately ferns often growing 3 to 4 feet tall. Does well in almost any shaded moist location. Each 25c.

.65	\$2.25
-----	--------

Lady Fern. A large handsome fern two or three feet tall with finely cut foliage. One of the best for general culture. Each 25c.

.65	\$2.25
-----	--------

Royal Fern. A moisture loving fern that will do well in a deep shaded spot. Each 25c.

.65	\$2.25
-----	--------

Evergreen Fern. An evergreen fern which is easily grown. Grows 15 to 18 inches tall. Each 25c.

.65	\$2.25
-----	--------

Leathery Wood Fern. A medium sized graceful fern for many uses. Does well in dry shade. Height 15 to 20 inches. Each 25c.

.65	\$2.25
-----	--------

All Plants 20c Each Unless Otherwise Noted

WILD FLOWERS AND PERENNIALS

PERENNIAL PLANTS

Anthemis

Tinctoria. Good reliable garden plant growing in the poorest soil. Fine cut foliage and golden yellow daisy like flowers produced all summer. Fine for cutting. Three Doz. .50 \$1.75

Companula

(Peach Bell Flower)

Persicifolia. One of the best border Bellflowers. Produces many saucer like blue flowers in June and July. Fine for cutting. Likes rich soil in sun. Height 2 feet.50 \$1.75

Chinese Lantern

Physalis. Too well known to need description. Grown for its bright red fruits which when dried make splendid winter bouquets. Plant in rich soil in sun or light shade. Plant roots 2 inches deep. Height 2 feet.40 \$1.50

Chrysanthemum

(Giant Daisy)

Uliginosum. One of the most striking fall blooming perennials covered in Aug. and September with many white daisy like flowers 2 inches across. Height 3 to 4 feet.50 \$1.75

Delphenium

(Larkspur)

No garden however small is complete without at least a few delphenium. Probably the most popular flower grown. The new varieties and strains are to be marveled at. Delphenium likes a good deep rich soil that has been limed and full sun.

Cliveden Beauty Belladonna. A fine improvement on the old variety. Flowers larger on better plants. Light blue flowers produced all summer if not allowed to go to seed and if given plenty of moisture. By far the best Delphenium for cut flower purpose. Height 3 to 4 feet. Year old clumps from field that bloomed last summer.50 \$1.75

Dreams of Beauty (Diener). This is the finest strain of Delphenium we have ever seen and one of the newest to be introduced. Wonderful iridescent blooms from lightest sky blue to deepest gentian blue, with orchid, lavender, rose, and pink shadings. Strong upright spikes. 5 to 6 feet tall. Both single and double flowers. You cannot be without some of these. Our prices are only possible because of quantity production. One year clumps from field that bloomed last year. Each 25c.60 \$2.00

Dicentra

(Bleeding Heart)

Spectabilis. Our garden would not be complete without the old-fashioned Bleeding Heart with its graceful racemes of pink heart-shaped flowers in early spring. An excellent border plant. Prefers rich sandy soil and grows to perfection in partial shade. Each 35c \$1.00

Hemerocallis

(Lemon Lily)

Flava. Sweet scented lily-like flowers of the clearest yellow. Bloom in June. Long narrow foliage attractive at all seasons making it a fine border plant. Of the easiest culture. Height 2 feet.50 \$1.75

Cut Back Delpheniums After Flowering

The LEHMAN GARDENS, FARIBAULT, MINN.

Iris

SEEDLINGS. We have a large lot of seedling Iris in many colors and combinations, that we are offering at these very reasonable prices. This is a good chance to add many colors to your collection for a very modest sum. Use them for mass plantings. Can be planted spring, summer or fall. Each 10c.25 .60

Linum

(Flowering Flax)

Perenne. Beautiful masses of fine feathery foliage. Flowers masses of pale blue on graceful stems from June to Sept. Must be grown on ordinary light sandy soil in full sun. Plant in spring or fall 8 inches apart. .50 \$1.75

Oenothera

(Evening Primrose)

Youngi. A strong stocky plant with fine large foliage. Numerous bright yellow flowers one inch across on stems 24 inches tall from June to Aug. Fine plant for massing in the border. Needs little or no attention. Grows best in well drained soil in sunny position. . . .50 \$1.75

Phalaris

(Varigated Ribbon Grass)

Green leaves longitudinally striped with white; very ornamental in clumps in lawn or border. Height 18-20 inches. Each 15c.40 \$1.25

PYRETHRUM

(Painted Daisy)

A very valuable hardy garden plant with beautiful daisy-like flowers in all shades of pink, rose, white and crimson. Their long flowering period, long stems, and wonderful lasting qualities make them very popular for cutting. They grow in neat compact tufts and have elegant finely cut foliage which adds grace as border plants.

They relish a rich soil well drained and should be grown in an exposed sunny location. If the faded flowers are cut and the plants given water during the summer they will bloom from June to September. Divide and replant them every third spring for best results. Plant in spring or fall 10 inches apart.

We are listing three of the new varieties this year which far surpass the old sorts in size and splendor. Being propagated by division, we can assure you of receiving plants true to color. All plants are strong 2 year old field grown clumps.

Buckeye. A wonderful improvement over the old red varieties. Multitudes of double red flowers completely covering the plants. Excellent long stems for cutting. Each 35c	1.00	\$3.50
Miami Queen. Many large semi-double clear pink flowers produced over a long season. Fine for cutting or border groups. Each 35c	1.00	\$3.50
Trojan. A tall free flowering variety producing many semi-double dark pink flowers all season. Outstandingly beautiful. Each 35c	1.00	\$3.50

Mixed Hybrids. Strong stocky plants of varied rich colors in pink, red and white. Each 20c.50 \$1.75

3 Charming New Pyrethrum

3 Buckeye Red	\$1.00
3 Miami Queen, pink	1.00
3 Trojan, dark pink	1.00
9	\$3.00

9 for \$2.50

The New Painted Daisy Are Lovely

ORIENTAL POPPIES

Without question the most dazzling and showy of all hardy perennials in point of color and size. The Oriental Poppies bring the gorgeous and brilliant colors of the Far East silks to our gardens. They grow from three to four feet tall and far surpass the annual and biannual kinds in size, splendor and effectiveness.

The reason so many people fail to succeed with the Oriental Poppy is because they do not understand the simple requirements of the plant, which is almost the reverse of most plants. The roots should only be transplanted during the dormant season which is during July, August and September. The plant makes a leafy growth during the cool fall months which is very necessary. This growth in evergreen and in spring the flowering stems appear and after blooming the top apparently dies which is the natural rest period of the plant. This dormant season is the only period at which field grown plants can be moved. They do well in any ordinary deep soil and increase in size and number of blooms from year to year. Cover lightly with evergreen boughs or light hay the first winter after planting. We are listing only such varieties as we know are the cream of the entire list. All strong 2-year old field grown plants.

Poppy plants are shipped during July, Aug. and Sept. ONLY

	Each	Three
Beauty of Liermore. A fine very large dark crimson with black blotch on the base of each petal.50	\$1.25
Mahogany. Darkest color of all Oriental poppies. The large flowers are carmine-purple almost the color of mahogany wood. Height 30 inches.35	.90
Mrs. Perry. The Standard and perhaps the best all around pink poppy. Very large salmon-rose flowers with dark center. Very free blooming. Should be in every garden.35	.90
Orange Beauty. Flowers very large and of a beautiful orange shaded scarlet, with a large purple blotch at the base of the petals. Very free blooming25	.60
Oriental Hybrids. A fine assortment of colors grown from seeds of the better named varieties. The greater percentage will be of the crimson scarlet shades. \$1.50 per dozen.20	.50
Olympia. Beautiful flame scarlet flowers overlaid with golden salmon. The only double variety and hence in great demand. The earliest of all to bloom. Height 24-30 inches.35	.90
Princess Victoria Louise. A pretty free flowering variety with flowers of a soft salmon-rose shading to blush-rose. Desirable.25	.60
Perry's White. A valuable addition to the list as it is the only really good white oriental poppy. Flowers are pure satiny white with a crimson-maroon blotch at the base of each petal.50	\$1.25

Complete Border Collection

3 <i>Companula Persifolia</i>50
3 Giant Daisy50
3 Delphinium50
3 Lemon Lily50
3 Flowering Flax50
3 Regal Lily50
3 <i>Huechera Rosea</i>60
3 Painted Daisy50
3 <i>Sedum Spectabile Brilliant</i>50
3 Hardy Phlox (3 colors)50
<hr/>	
30	\$5.10

30 Fine Plants for \$3.75

We Prepay All Transportation Charges

HARDY PHLOX

Without the Hardy Phlox our gardens would surely be barren during July, August and September when their brilliant colors overshadow all other perennials. Phlox can be used in masses in the perennial garden and clumps among the shrubbery are very effective. They thrive best in a partly shaded location in soil that is deeply dug, well drained but moist and the richer the better. Phlox must never suffer for want of moisture as the root system is very shallow so that during prolonged dry spells water should be applied freely. Can be planted either spring or fall 8 to 10 inches apart.

We are listing eight varieties which we consider to be the best in their respective colors. All strong field grown plants.



Phlox Count Zeppelin

	Each	Three
Count Zeppelin. Very large pure white flowers with vermillion-red eye. A very clean looking phlox which does not fade in the sun. Very thrifty and free flowering and a good grower. Height 30 inches.20	.50
Eclairer. A brilliant rosy purple with lighter center. One of the best growers and without a doubt the best of its color. Height 26 inches.20	.50
Frau A. Buchner. An extra large pure creamy white blossom. Truss and florets extra large. Midseason. Height 25 inches.20	.50
Jules Sandeau. Large trusses of pure rose pink flowers on strong dwarf stems. One of the most delightful colors. Height 18 inches.20	.50
La Vague. A pure mauve with striking red eye. Midseason. Height 24 inches.20	.50
Miss Lingard. This is the everblooming phlox belonging to the suffruticosa type and has long shiny green foliage. Blooms from June to October. Flowers of the purest white. Height 24 inches.20	.50
Siebold. This is one of our favorites, flowers freely on strong stems. Color is a beautiful pleasing orange-scarlet with crimson center. Midseason. Height 26 inches.20	.50
Von Hochberg. A favorite because of the striking bright crimson color and free blooming quality. Midseason. Height 24 inches.20	.50

Sensational Bargains

\$1.00 Introductory Specials

In order to introduce the Lehman Garden quality to a greater number of gardening people we are offering these extraordinary collections at very reduced prices. This is your chance to secure the plants you have wanted for very little money. When you buy from us you are assured that 100% of your purchase dollar is produced in quality plants. We do not use 50% of your dollar for a costly catalog or expensive advertising. Therefore your dollar will buy more from us.

All plants are guaranteed well grown and A No. 1 grade. Give us a trial order and if you do not think the plants are as represented, return them at our expense and your money will be cheerfully refunded. In ordering simply check the collections wanted, fill out the blank on reverse side and mail to us with your remittance.

By Parcel Post, All Charges Prepaid

ANY SIX COLLECTION FOR \$5.00

-
- () 5 Henryi Lily—A beautiful orange-yellow lily blooming in August. Five mammoth bulbs\$1.00

 - () 5 Madonna Lily—That much loved pure white lily blooming in July. Fine fresh Northern grown bulbs for July, Aug., and Sept., delivery. Far superior to imported bulbs. Five large bulbs for\$1.00

 - () 8 Regal Lily—Perhaps the best of all lilies. Eight 6 inch bulbs guaranteed to bloom next summer for\$1.00

 - () 3 New Double Pyrethrum—Glorious new creations and colors. One plant each of Buckeye red; Miami Queen clear pink; Trojan dark pink. Three strong plants for\$1.00

 - () 10 Cacti—Order this collection and plant that hot, barren spot in the rock garden. Nature's most wonderful creations. Your miniature desert garden will be colorful and unique all season. Ten blooming size plants for\$1.00

 - () 4 Sempervivum Aristocrates (Hen and Chicken)—One each of the following new, outstanding varieties: Amber Green; Emerald Giant; Royanum and Rubricumdum Hybridum. Four fine plants for \$1.00

 - () 10 Lilies—Two each of the universal 5 best lilies Henryi, Regal, Speciosum, Tenuifolium, and Umbellatum. The quality of this collection cannot be duplicated. Ten flowering size bulbs for\$1.00

 - () 3 Lily Willmottiae—One of the newest lilies from China. A graceful and dependable bloomer. Now at a price everyone can afford. Three blooming size bulbs for\$1.00

 - () 3 Bittersweet Vines—Well rooted, 2 year old plants. Three for\$1.00

 - () 10 Rock Garden Plants—All different, named and labelled. Ten fine clumps for\$1.00

 - () 10 Sedums—Assorted varieties, both upright and creeping. Ten clumps for\$1.00

 - () 10 Hen and Chicken—Assorted varieties. Excellent for the rock garden. Ten for\$1.00

 - () 5 Fringed Bleeding Heart—Let the lacy foliage and pink flowers brighten up that shaded nook in the rockery. Five large clumps for\$1.00

 - () 10 Maidenhair Fern—The most graceful of all hardy ferns. Does well in moist shaded spots. Ten large clumps for\$1.00

 - () 10 Trillium Grandiflorum—(Wake Robin) The most showy of all our native early spring blooming plants producing large three petaled white flowers. Ten plants for\$1.00

 - () 8 Mertensia (Virginia Bluebell)—Perhaps the bluest and daintiest of all spring blooming flowers. Does well planted under deciduous trees in partial shade. Eight plants for\$1.00

 - () 10 Hepatica—A native of the easiest culture producing many lilac colored flowers in early spring before the leaves appear. Large plants with 6 to 8 flowering crowns. Ten for\$1.00

 - () 6 Oriental Poppies—Named varieties our selection of colors which will include red, pink and salmon, for July, August and September delivery. Six 2 year plants for\$1.00

 - () 4 Yellow Lady Slippers—Nice plants that will give abundant bloom in May. Four plants for\$1.00

 - () 25 Pumila Iris—Desirable for rockery planting or border edging as they grow only from 6 to 10 inches tall. A fine mixture of blue, purple and yellow varieties. Twenty-five plants for\$1.00
-

WE PREPAY ALL TRANSPORTATION CHARGES

Specials

ORDER BLANK

GOLD MEDAL PICTURE COLLECTION

10 Regal Lily	\$1.50
10 Huechera Rosea	1.75
10 Delphenium	1.50
	\$4.75

SENSATIONAL VALUE FOR \$4.00

"SEVEN GEMS" SEDUM BARGAIN

1 Hybridum25
1 Ellecombianum25
1 Sieboldi30
1 Silver25
1 Kamtschaticum Varigated25
1 Lydium20
1 Corsicum25
	\$1.75

ALL 7 FOR \$1.50

A DOZEN GEMS FOR THAT SHADED CORNER

3 Dutchman's Breeches25
3 Bloodroot40
3 Maidenhair Fern40
1 Hepatica15
1 Mertensia20
1 Phlox Divaricata15
Actual Value	\$1.55

FOR \$1.35

A FERN COLLECTION EVERY HOME NEEDS

3 Ostrich65
3 Lady65
3 Royal65
3 Evergreen65
3 Leathery Wood65
3 Maidenhair Fern40
	\$3.65

Complete collection of 18 ferns for \$3.25
Prepaid

Date.....

THE LEHMAN GARDENS:

Enclosed you will find \$..... Please send me the collections checked, and the stock listed below.

Name

Address

CityState.....

Quantity	NAME	PRICE

The LEHMAN GARDENS
FARIBAULT, MINNESOTA

CACTI

These interesting plants from the desert are a curiosity in themselves as they represent many of the pin-cushion types. They are all different shapes and have many types of colored needles. Need absolutely no attention once planted. Thrive best in a hot, dry, sandy location. Many colored bloom through the summer. All are hardy to the temperature of zero. Can be taken inside for the winter where they make an interesting garden in the fernery. We are offering one each of ten different varieties for \$1.00 postpaid.

Opuntia

(Prickly Pear Cactus)

Three Doz.

Polyacantha. A variety of Cactus absolutely hardy where the winter temperature goes to 30 degree below zero. An unusual and interesting plant for the hot dry reekery. Rapid spreading growth 1 foot high profusely covered with large showy yellow flowers in July which are followed by interesting showy red fruit. Each 20c .50 \$1.50

BITTERSWEET

(Celastrus Scandens)

Bittersweet is one of our best known native vines, whose clusters of orange-red berries are popular for winter decorations. It is very hardy, grows almost anywhere, and requires no particular soil or location.

In summer the plants are a mass of beautiful foliage and in June it has clusters of small pale-yellow flowers. But in autumn it reaches its full beauty when it is covered with clusters of beautiful orange colored berries which are retained all winter. Fine vine for the porch trellis or for covering an ugly post or tree.

Seeds 25c per packet.

Strong 2-year-old plants 35c each, 3 for \$1.00

WOOD NOVELTIES

These gay ornaments add charm and color to the garden or lawn which the plants do not give. Made of the best grade of 3/4 inch Southern white pine. Well finished with 3 coats of a good grade durable paint and one coat of weather-proof varnish.

Each peace is complete with steel rods to hold ornaments in place.



No. 1 The Flower Girl 22½ inches high. Colors: blue and white or red and white. State color wanted. Each \$1.50.

No. 2 Rabbit 13½ by 6¼ inches. White with black markings. Each 75c.

No. 3 Squirrel 10 by 8½ inches. Finished in a neat all over brown. Each 75c.

No. 4 The Little Gardener 22½ inches high. Colors: blue and white or red and white. State colors wanted. Each \$1.50.

No. 5 Playful Dog 11 by 13 inches. Color white with black. Each 75c

No. 6 Bull Dog. Useful as a "Keep off the grass" sign. 11 by 11 color black and white. Each \$1.00.

No. 7 Small Dog 11 by 13 inches. Color white with black. Each 75c

We Prepay All Transportation Charges

UNCHALLENGED VALUES

8 REGAL LILY
6 in. Bulbs sure to bloom
\$1.00

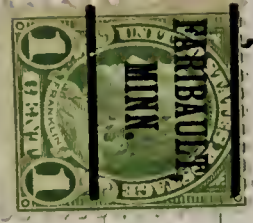
5 MADONNA LILY
Extra select—Blooming size
For July, Aug. and Sept. Delivery
1.00

YELLOW LADY SLIPPERS
For That Shady Corner
1.00

MERTENSIA VIRGINICA
(Those Dainty Bluebells)
1.00

10 HEN AND CHICKENS
Assorted Varieties
1.00

All Offers Prepaid
TO PLEASE YOU PLEASES US



AFTER FIVE DAYS RETURN TO

The LEHMAN GARDENS

FARIBAULT, MINNESOTA

RETURN POSTAGE GUARANTEED

Sec. 562 P. L. & R.

Miss Lehman
Division of Hort Engg. Division
Bureau of Plant Industry
U. S. Dept of Agr.
Washington, D. C.