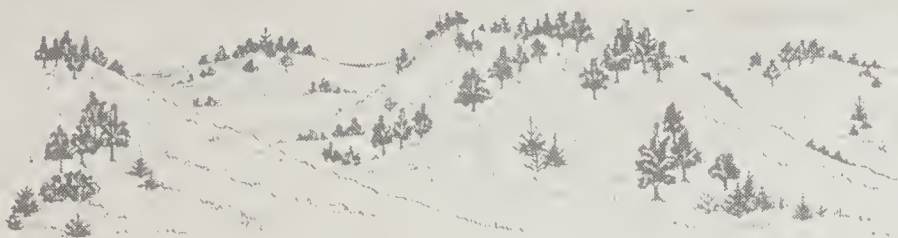


Historic, archived document

Do not assume content reflects current scientific knowledge, policies, or practices.



Flor-Acre Gardens

H. A. VALERIUS, Proprietor
ON DUNES HIGHWAY US-12
BRIDGMAN, MICHIGAN

Return Postage Guaranteed

LIBRARY
RECEIVED - Sec. 562 P. L. & R.
★ SEP 17 1957
U. S. Department of Agriculture



*U.S. Dept. of Agric.
Bureau of Plant Industry
Dir. of Fruit & Veg. Insp.
Washington, D.C.*

❖ BETTER PLANTS FOR BETTER GARDENS ❖



Phlox—
America's
Most
Popular
Perennial

Come to see our young Phlox plants which are in bloom from now until frost. Our collection is the finest obtainable. Phlox are the most effective and useful garden plants during late July, August, and September. They deserve a prominent place in every hardy flower garden as they give more display and satisfaction than any other flower. They prefer a soil that has been deeply enriched and should have plenty of water during the summer months. Plant about a foot apart, and they will look so much better if you will plant 3 or more plants of a kind in a group. Our collection is a choice one and extreme care is used in making our color descriptions accurate.

PHLOX PRICES: Unless otherwise stated, plants are 25c each; 3 of a kind for 60c, or \$2.00 per dozen of a kind; 35c plants are 3 for \$1.00, or \$3.00 per dozen.

Choice Varieties

- AFRICA.** Brilliant carmine-red, with blood-red eye.
- ALDENHEIM TRIUMPH.** Soft pink with cherry-red eye.
- B. COMPTE.** Rich, satiny, amaranth-red. Darkest red of all.
- BARON VON DEDUM.** Salmon-rose. Long bloomer and very popular.
- BEACON.** Cherry-red.
- BETTY LOU.** Orange-red.
- BORDER QUEEN.** Watermelon pink—an improved Jules Sandeau. Florets large as a silver dollar. New.
- CAMILLO SCHNEIDER.** Brilliant cardinal red. In a class of its own. 35c each.
- DELHI.** Best white with red eye. 35c each.
- DIPLOMAT.** Largest and purest white yet offered. Heavy deep green foliage. 35c each.
- ECLAIREUR.** Rosy-purple.
- E. I. FARRINGTON.** Soft salmon pink with bright eye. Very pretty.

- ENCHANTRESS.** Soft salmon pink with dark eye. Dwarfier and deeper color than E. I. Farrington.
- EUROPA.** White with red eye.
- EVANGELINE.** Beautiful salmon-pink.
- EVERLYN.** Pure salmon with red eye.
- GEN, PETAIN.** Deep wine red.
- GUY MOORE.** Crushed strawberry. A new shade.
- HANS VOLMULLER.** Soft violet blend with white.
- LEO SCHLAGATER.** Brilliant scarlet in large heads. 35c each.
- MRS. JENKINS** A popular white.
- MRS. W. G. HARDING.** A deep rose; faintly flushed scarlet. Choice and new. 35c each.
- PAINTED LADY.** Silvery pink with cherry-red eye.
- PROF. WENT.** Very deep rich satiny red.
- RUBY.** Splendid crimson-red.
- ROYAL PURPLE.** Best purple-blue.
- SALADIN.** Brilliant orange-scarlet. Very showy. 35c each.
- WM. KESSELRING.** Violet with white eye.

Oriental Poppies

For a gorgeous display of rich and brilliant colors in the border for May and June, nothing can compare with the Oriental Poppy. Its large cup-shaped flowers are borne on strong erect stems from 18 to 24 inches high.

We offer the following varieties in strong field grown plants which have bloomed this year. Plant in August, September, and October only.

- ORIENTALE.** The orange type, which is really an orange scarlet. 25c each, 3 for 60c, or \$2.00 per dozen.
- LULA A. NEELEY.** The best blood-red variety. 35c each or 3 for \$1.00.
- MANDARIN.** Glorious, rich Chinese-red. Flowers 7 to 8 inches across. 75c each.
- MAY QUEEN.** A new double orange-scarlet. Really very attractive—more double and blooms two weeks earlier than any other kind. 25c each or 3 for 60c.
- MRS. PERRY.** Salmon-pink. The most popular "Pink" poppy. 35c each or 3 for \$1.00.

VISITORS are always welcome at our nursery. Come and take your plants along with you.

PERENNIAL ASTER SHOW: 15 of the finest varieties known. In bloom throughout September.

CHRYSANTHEMUM SHOW: 30 early blooming varieties that are unsurpassed. Main bloom from September 15th, to heavy frost.



FOR SEPTEMBER AND OCTOBER

Popular Lilies

MADONNA LILY (*Lilium candidum*). This is sometimes called the June Lily, because it gives us lovely, well known and popular, waxen white lilies in late June and early July. 3 to 4 feet high. Plant not over 3 inches deep before October 1st. Three large bulbs for 60c or \$2.00 per dozen.

RED RUSSIAN LILY (*Lilium elegans*). A dwarf Lily of easy culture and very desirable. Clusters of large erect flowers in June and July of an orange-red color. 15 to 18 inches high. 3 for 60c or \$2.00 per dozen.

FORMOSA LILY (*Lilium formosanum*). Most remarkable Lily introduced in recent years. The white trumpets are much longer and narrower than those of the Regal Lily and bloom in September and October. Easy culture in well drained soil. Plant 6 inches deep. 3 for 60c or \$2.00 per dozen.

REGAL LILY (*Lilium Regale*). The Regal Lily is truly a Royal Lily—"fit for a king." It is one of the most beautiful and hardiest of Lilies. The abundance of sweet-scented flowers are white, with the outside or back having a pinkish tinge which makes it very lovely. The plants grow from 3 to 5 feet high and are very floriferous when well established, bearing as high as 18 to 20 flowers in July. Plant 6 inches deep in well drained soil. Three large blooming size bulbs for 60c or \$2.00 per dozen.

TIGER LILY. (*Lilium tigrinum*). An old favorite with very easy culture. A deep orange lily with black spots. August bloomer. 4 to 5 feet high. 3 for 60c or \$2.00 per dozen.

CORAL LILY (*Lilium tenuifolium*). A charming little gem of the family with deep scarlet flowers on 18 inch stems in June. Everyone adores it. Plant in well drained soil. 3 for 50c or \$1.60 per dozen.

September and October is an ideal time for planting most perennials and rock plants. When planted at this time, they become established in early fall and they do not receive a set-back as from spring planting.

Send for our complete plant list if you have mislaid your copy which was sent to you last spring.

Plants ordered from this folder will be sent post-paid.

Peonies

Peonies, of well chosen kinds, produce magnificent, colorful and fragrant bloom for over a month in late Spring. In planting this old favorite, dig the soil deeply and enrich it with well-decayed manure or bonemeal or both and the plants should be set so that the buds will be exactly two inches under the surface of the ground. We grow four of the better kinds of peonies and send you strong three to five eye divisions.

KARL ROSENFELD. A fine all-round deep red peony. 75c each.

LE CYGNE. A white—the highest rated Peony in existence. \$1.25 each.

LONGFELLOW. A winner in bright crimson. 75c each.

MONS. JULES ELIE. A favorite early medium-pink. 75c each.

WALTER FAXON. A soft coral-pink. One of the best pinks. Mid-season. 75c each.

German Iris

We grow a select list of the finer varieties in the more popular price range. Strong divisions are furnished.

DAUNTLESS. The most popular and widely known of the so-called red Iris. Has a very little blue undertone. 35c each.

FRIEDA MOHR. A lavender-pink. 20c each.

GERMAINE PERTHIUS. A purplish blue. 20c each.

MME. GAUDICHAU. Velvety dark violet-blue. 20c each.

PEACHES. A warm and bright blend of peach, apricot, and orange. 35c each.

PLUIE d'OR. The best deep yellow. 20c each.

RAMESES. A delightful blend of rose, pink and buff. Very desirable. 35c each.

Siberian Iris

These lovely, wiry stemmed Iris are very graceful and bloom when the German Irises are finishing.

CAESAR. Deep blue. 20c each.

RED EMPEROR. Nearest to red. 25c each.

SNOW QUEEN. Pure white. 20c each.

SUNNYBROOK. Lovely sky-blue. 20c each.

Dwarf Iris

These little Iris pumila, which grow from 4 to 6 inches high, are beautiful in the rock garden, as a border for flower beds and paths, and for planting around a pool. They bloom in early spring.

Colors of DEEP PURPLE, WHITE, BLUE or YELLOW. Your choice: 15c each or 4 for 50c.

PLANTING



Bleeding Heart

Everyone loves the old-fashioned Bleeding Hearts (*Dicentra spectabilis*). Long drooping racemes of large pink heart-shaped flowers in May and June. Two feet high. Grows in sun or shade. You should have some of our strong clumps, 35c each.



Foxtail Lily

This Foxtail-Lily (*Eremurus himiliacus*) belongs to a family of stately and noble plants. When well established they produce many giant flower spikes, 6 to 8 feet high, thickly beset with pure white star-shaped flowers on the upper two to three feet of the stem. It is admired for its unusualness and yet it is beautiful. Your neighbors will talk about it because it is very different. Plant in any well drained soil in the sun. After the soil is frozen solid, a light winter mulch is desirable. Good strong 5 year old plants. Usual price \$2.00— our special price is \$1.00 each.

Virginia Bluebells

The Virginia Bluebell (*Mertensia virginica*) is one of the most beautiful and a leader of the early spring flowering plants. The tubular, bell-like flowers, which hang in graceful clusters on 15 to 18 inch stems, are pink when in bud and change to a lovely gentian-blue when open. Will grow in full sun in the ordinary border, but very desirable for naturalizing in shade. The foliage dies down shortly after flowering. 3 for 50c, \$1.60 per dozen, or \$12.00 per hundred.

Pansies and Violas

Pansies and Violas bloom much more freely and live longer if you will plant them in the fall, instead of waiting until spring or summer. We offer strong young seedlings for September 15th. to November 1st. delivery. These plants winter very satisfactorily if given a light straw mulch after the ground is frozen. This is the way we handle them.

PANSIES: Improved Swiss Giants—25c per dozen. All-American Bedders—35c per dozen.

VIOLAS: Admiration—deep violet, Arkwright Ruby, Chantreyland—finest apricot, and Yellow Queen. The above Violas at 35c per dozen and not less than 6 of a kind.

Pansy and Viola plants not postpaid.

