

Historic, archived document

Do not assume content reflects current scientific knowledge, policies, or practices.

1938
CATALOG

PLANT
REVISED
APR 10 1938
Department of Agriculture



Glenwood Winery

GLEN BROTHERS, INC.

ESTABLISHED 1866

ROCHESTER, N.Y.

"WE FURNISH THE HOME-OUTDOORS"

WHEN ORDERING PLEASE NOTE

TERMS: Cash. For customers of established credit accounts will be opened, due in 15 days from date of invoice. Orders for C. O. D. shipment must be accompanied by one-fourth the amount.

GRADE: We supply a standard grade of stock but when unusual specimen material is selected at the nursery an extra charge will be made to fit value.

GOODS IN TRANSIT: All prices are F. O. B. Rochester, N. Y. or Fairport, N. Y. and include all packing charges.

SHIPPING INSTRUCTIONS: State whether by freight, express, or parcel post the exact destination. Freight and Express shipments are forwarded charges collect. Parcel Post shipments are sent C. O. D. for parcel post charges even in cases where the contents are shipped on open account.

CLAIMS, SHORTAGES OR DISSATISFACTION must be made immediately upon receipt of goods. Any mistake or fault on our part will be gladly rectified.

PLANT INSURANCE: We assume no risk after delivery to Transportation Company in good condition as we have no control over plant material after it leaves our hands and we do not guarantee its life or replace without charge. We do replace material that dies the first year at $\frac{1}{2}$ price.

PLANTING SEASON: Spring season begins as soon as the frost is out of the ground usually about March 20th, and continues until mid-June although Evergreens and Perennials can be successfully planted until early July. Fall season, Evergreens can be transplanted from early August until late November. Perennials during September and October, deciduous fruits and ornamentals from mid-September to early December.

GUARANTY: While we use every precaution to have each tree and plant absolutely true to name and according to label, if it is proved that stock is not true to name by error on our part we will replace such plants immediately free of charge and it is agreed between the purchaser and ourselves that we shall not be held for an amount greater than the purchase price of the stock.



*Corner of our office where your valued order is entered,
filed and acknowledged*

RELIABILITY

For more than seventy years "From Glen Brothers Inc." has been a guarantee of first quality stock, true to name, handled and packed right, delivered to customers in the best possible condition. We point with pride to the ornamental trees and shrubs in private and public grounds, parks and streets; the roses and plants growing and blooming in garden and house, the beaming orchards in every fruit locality for evidence in regard to how well we are succeeding in our endeavor to produce the best.

Located near the shores of Lake Ontario with wide variations of temperature, at times 15 degrees below zero, the conditions are extremely favorable for the production of hardy, robust trees and plants. These conditions—with the soil best suited to produce the healthiest conditions of growth, namely that solid, firm texture of the wood, with abundant fibrous root, so necessary to successful transplanting—enables us to offer the choicest nursery stock with entire confidence to planters in all sections of the country.

Our experience of more than seventy years has taught us that good cultivation is of supreme importance, hence we spare no pains or expense to maintain the highest efficiency in this direction.

To the planter or purchaser of nursery stock, at least three things are indispensable; first: varieties true to name; second, healthy, vigorous, well-matured trees or plants; and third, careful and judicious packing, without which all may be lost.

We give to our packing and shipping careful, personal supervision. And still further to protect our patrons, as well as ourselves, against loss in this direction we employ the most skilled and competent hands to assist us.



Bird's eye view of part of Glenwood Nursery

INDEX

	Page
Asparagus 2 Yr.	44
Asparagus 3 Yr.	44
Barberry	4
Blackberries	42
Boysenberry	47
Currants	42
Evergreens	28 to 32
Evergreen Shrubs	12
Flowering Shrubs	4 to 10
Fruit Trees, 2 Yr.	34 to 37
Fruit Trees, Extra Large 4 Yr. old.....	38, 39
Gooseberries	42
Grapes 2 Yr.	45
Grapes, Extra Large 3 Yr. old.....	46
Grass Seed	27
Hedge Plants	9
Lilacs	11, 12
Landscape Dept.	3
Nut Trees	33
Ornamental and Shade Trees.....	22 to 27
Peaches	37
Peonies	21
Perennials	18 to 21
Raspberries	40, 41
Rhubarb	42
Roses, Climbing	16
Rose Bed	17
Roses Hybrid Tea	15, 16
Strawberries	43
Tree Seedlings	48
Vines	13, 14



Residence A. B. Shultz Esq., Buffalo, N. Y., three months after we planted it.

**Plant Our Trees and Plants and in 3 Months Your Place
Will Look As if Planted 3 Years.**

We Grow Trees and Plants To Produce Immediate Effect.

OUR COMPLETE LANDSCAPE SERVICE

Creating pictures with Evergreens, Trees, Flowering Shrubs and plants is the only adequate description which can be given the highly developed and experienced service of our Landscape Architects. In the creation of such effects we not only aim to develop that peculiar charm which will best express a natural beauty and make it harmonious with the house, the grounds and the surroundings but especially to create those beautiful landscape pictures which will fascinate throughout the entire year.

While builders of new homes are conscious of the need to engage Architects in the development of beautiful designs, it is unfortunate to observe the very large number of instances where the possibilities of an exterior setting of an otherwise carefully designed and attractive house have been entirely ignored, or the grounds have been planted in a "hit or miss" manner. To individuals possessing good taste the sight of a charming English cottage set in a wealth of crimson Cannas edged with equally crimson scarlet Sage must not only be ludicrous but painful as well.

To make possible the preparation of a Landscape design which would catch the proper spirit of the architectural style of the house and translate it together with its surroundings into a charming landscape composition was the very definite purpose given to the selection and organization of the personnel behind the Glen Landscape Service.

Since we are primarily Nurserymen interested in the sale of trees and plants and not in the sale of Landscape designs, we are in a position to offer the services of our landscape architects at a very low cost to our clients in connection with the planting of our plant material, for example, we prepare comprehensive plans for as low as 10 per cent. of the estimated cost of the material necessary for the proper execution of said plan and this small fee is credited when the order for the planting material is received, hence in case we supply the planting material there is absolutely no charge for the plan.

"Glenwood grown" Evergreens, Ornamental Trees, Rhododendrons, Flowering Shrubs, Perennials, Roses, Vines, etc. are the finest that anyone could possibly grow or procure anywhere.

Let us get in touch with you today. Some member of the firm personally will come and talk with you. We have found this to be the only way to most effectively cooperate with our customers. Write us and we will arrange an appointment to suit your convenience. Once the outline of the work is agreed on, we will do the rest.



Spirea VanHouttei

DELIGHTFUL FLOWERING SHRUBS FOR THE HOME GROUNDS

Our Shrubs are well established, two to three years old, well branched, well rooted. Most of our shrubs are grown expressly for landscape purposes to give immediate effect. In the following list may be found shrubs producing a great range of color and flowers. There are shrubs with green foliage, yellow foliage and red foliage. Some produce foliage that take on particularly delightful colorings in the Fall. Others produce gorgeous berries, red, white and black. Make your selection from the following list. **QUALITY CONSIDERED** our prices are as low as those of any other Company.

AMELANCHIER (June berry).

White flowers in early Spring before leaves; fruits are relished by birds.

	Each	Per 10
2-3'75	6.50
3-4'	1.00	9.00

ARALIA SPINOSA (Hercules' Club).

Useful for tropical effects and shadows. White flowers, July

5-6'	1.50	12.50
------------	------	-------

BERBERRIS THUNBERGI (Thunberg's Japanese Barberry).

Hardy, dense, low growing shrub with spreading thorny branches. Small bright green leaves turning brilliant orange and yellow.

	Per 10	Per 100
15-18 inch	2.50	20.00
18-24 inch	3.00	25.00

BERBERRIS THUNBERGI ATROPURPUREA (Red Leaved Japanese Barberry).

Similar to the green leaved Japanese Barberry but the foliage is of a rich, lustrous, bronzy red.

	Each	Per 10	Per 100
15-18 inch, 2 Yr. plants50	5.00	35.00

	Each	Per 10
BUDDLEIA, Davidi veitchi (Butterfly Bush).		
Blooms heavily in mid-summer and continuing into the Fall.		
2 Yr. plants50	4.50
CALYCANTHUS (Sweet Shrub).		
An old garden favorite with fragrant dark reddish-brown flowers.		
2-3'60	5.50
3-4'70	6.50
CERCIS CANADENSIS (Judas Tree or Red Bud).		
Rosey-pink. April, very effective. Good foliage.		
4-5'	1.00	
CHIONANTHUS VIRGINICA (Fringe Tree).		
Fragrant white flowers. May-June. Blue-black, plume-like fruits follow.		
2-3'75	6.50
CLETHRA ALNIFOLIA (Sweet Pepper Bush).		
Spikes of very fragrant flowers. July-September.		
2-3'60	5.50
CORNUS AMOMUM (Silky Dogwood).		
Pale blue fruits, young twigs purple.		
2-3'50	4.50
3-4'60	5.50
Lutea (Dogwood).		
Has distinct yellow bark. Fine for winter effects.		
2-3'50	4.50
Sanguinea (Dogwood).		
Purple or dark blood-red branches and greenish white flowers.		
2-3'50	4.50
3-4'60	5.50
Siberica (Dogwood).		
Clusters of white flowers, succeeded by ornamental berries. Stem and branches blood red.		
2-3'50	4.50
3-4'60	5.50
CRATAEGUS Pauli (Paul's Double Scarlet Thorn).		
Double scarlet flowers.		
3-4'	2.00	15.00
CYDONIA, Japonica (Japanese or flowering Quince).		
Scarlet flowers in April, May.		
2-3'50	4.50
DEUTZIA, Gracilis (Dwarf Deutzia).		
Profuse bloomer. Pure white. May.		
18-24"50	4.00
Rosea.		
Similar in growth to Deutzia Gracilis but has pink flowers.		
2-3'50	4.50
3-4'60	5.50
Pride of Rochester.		
Vigorous large flower tinged pink. June.		
2-3'50	4.50
3-4'60	5.50



Hydrangea Pee Gee

ELAEAGNUS LONGIPES (Cherry Elaeagnus).

Silvery leaves. Fragrant. Yellow flowers, May. Large red berries ripe in July.

	Each	Per 10
2-3'60	5.00

EUONYMUS.

Americanus (Strawberry bush).

Pink fruits. Prefers moist locations.

	Each	Per 10
3-4'60	5.50

Europaeus (Burning bush).

Pink fruits on long stalks, persisting a long time.

3-4'60	5.50
------------	-----	------

FORSYTHIA, Fortunei.

Good habit, arching branches; vigorous grower. Golden yellow.

2-3'50	4.50
3-4'60	5.50

Intermedia.

Bright yellow flowers in April before leaves unfold.

2-3'50	4.50
3-4'60	5.50

Suspensa.

Graceful drooping habit; excellent for massing or banks.

2-3'50	4.50
3-4'60	5.50

Viridissima.

Most vigorous. Has green bark and thick dark green leaves.

2-3'50	4.50
3-4'60	5.50

HIBISCUS (Althea or Rose of Sharon).

Double red; Double white; Double rose.

2-3'50	4.50
3-4'60	5.50

HYDRANGEA, Arborescens (Hills of Snow).

Large double white flower panicles; very showy. August.

2-3'60	5.50
------------	-----	------

HYDRANGEA (Cont'd.)

	Each	Per 10
Paniculata Grandiflora.		
Very showy white flowers, later changing to pink. August.		
2-3'60	5.50
3-4'70	6.50
Tree Form.		
Useful for formal effects in the garden.		
4-5'	1.50	13.50
KERRIA, Japonica (Globe-flower).		
Golden yellow flowers. June, Sept. Green branches.		
2-3'60	5.50
KOLKWITZIA (Beauty Bush).		
A beautiful shrub. Covered in early May with mass of pink flowers.		
2-3'90	8.50
LONICERA, Fragrantissima (Early Fragrant Honey-suckle.)		
Fragrant white flowers. April-May. Half evergreen.		
2-3'50	4.50
3-4'60	5.50
Tartarica (Pink Tartarian Honeysuckle).		
Pink and white. Flowers and fruit freely produced.		
2-3'50	4.50
3-4'60	5.50
Tartarica Alba (White Tartarian Honeysuckle).		
A white variety of the above. Bright red berries.		
2-3'50	4.50
3-4'60	5.50
Ruprechtiana (Manchurian Honeysuckle).		
White flowers in May and June, changing to yellow.		
3-4'60	5.50
PHILADELPHUS, Coronarius (Common Mock Orange).		
White fragrant flowers borne in May and June.		
2-3'50	4.50
3-4'60	5.50
Falconeri (Falconer's Mock Orange).		
Medium sized shrub with graceful branches. Fragrant, white.		
2-3'50	4.50
3-4'60	5.50
Grandiflorus (Large-flowered Mock Orange).		
Large pure white fragrant flowers.		
2-3'50	4.50
3-4'60	5.50
Virginalis (Virginal Mock Orange).		
Fragrant white flowers much larger than any other variety. Blooms intermittently all summer.		
2-3'60	5.50
3-4'75	7.00
RHODOTYPOS, Kerroides (White Kerria).		
Graceful shrub. Pure white flowers in May and June. Shiny black berries in autumn.		
2-3'50	4.50
3-4'60	5.50
RHUS, Aromatica (Fragrant Sumac).		
Clusters of small yellow flowers. April-May. Most attractive in June when covered with coral-red fruits.		
3-4'75	6.50



Shrubs—make your home more attractive

		Each	Per 10
Cotinus (Purple fringe or smoke tree).			
A medium sized shrub with fringe like flowers.			
2-3'60	5.50
3-4'75	6.50
Typhina (Staghorn Sumac).			
Picturesoue habit; brilliant autumn effect.			
2-3'60	5.50
3-4'75	6.50
SAMBUCUS, Canadensis (American or Sweet Elder).			
Handsome shrub. Flowers white, fruit purplish.			
2-3'50	4.50
SPIREA, Anthony Waterer (Waterer Spirea).			
Rose-pink flowers produced all summer.			
15-18"50	4.50
18-24"60	5.50
Bumalda.			
Light pink flower. July-Sept. A good dwarf facing shrub.			
18-24"50	4.50
Prunifolia (Bridal Wreath).			
White. May, free flowering. Handsome dark green foliage turning orange in autumn.			
2-3'50	4.50
3-4'60	5.50
Van Houttei (Van Houtte Spirea).			
White. May-June. Extremely free flowering and very adaptable.			
2-3'40	3.50
3-4'45	4.00
Froebeli (Froebel Spirea).			
Excellent dwarf Spirea. Very vigorous and hardy. Produces large flat heads of rosy-pink flowers. June-September.			
2-3'50	4.50
SYMPHORICARPOS, Racemosus (Snowberry).			
Pinkish flowers, white berries.			
2-3'50	4.50
3-4'60	5.50
Vulgaris (Coral Berry or Indian Currant).			
Plump red fruits clustered along the branches.			
2-3'50	4.50
3-4'60	5.50

	Each	Per 10
STEPHANANDRA, Flexuosa.		
Graceful compact habit. Handsome foliage.		
2-3'60	5.50
TAMARIX, Africana.		
Feathery foliage and long slender racemes of pink flowers in early summer. Very striking at the edge of an evergreen border.		
3-4'75	7.00
VIBURNUM, Cassinoides (Withe-Rod).		
White. June-July. Berries pink changing to dark blue. Splendid for massing and near water.		
2-3'75	6.50
3-4'90	8.00
Dentatum (Arrow Wood).		
White. May-June. Berries blue-black; autumn coloring purple and red. Thrives in wet soil.		
2-3'50	4.50
Lantana (Wayfaring Tree).		
White flowers. May-June. Handsome dark green wrinkled leaves. Berries red changing to black.		
2-3'50	4.50
3-4'60	5.50
Lentago (Nannyberry).		
White flowers. May-June. Handsome shining leaves. Blue-black fruits. Splendid shrub for massing.		
2-3'50	4.50
3-4'60	5.50
Opulus (High-bush cranberry).		
Very similar in habit of growth and fruit to the American Cranberry bush.		
2-3'50	4.50
3-4'65	6.00
Plicatum (Japanese Snowball).		
Showy white flowers in balls. June. Handsome foliage with purple autumn coloring.		
2-3'40	3.50
3-4'60	5.50
WEIGELA, Eva Rathke (Red flowering Weigela).		
Carmine flowers. June-August. Most floriferous.		
18-24"50	4.50
2-3'60	5.50
Rosea (Pink Weigela).		
Rose-colored flowers in May.		
2-3'50	4.50
3-4'60	5.50

HEDGE PLANTS

LIGUSTRUM, Amurense (Northern Amoor River Privet).		
Half evergreen; very hardy.		
	Per 10	Per 100
18-24"	1.50	12.00
2-3'	2.00	17.00
Ibota (Ibota Privet).		
Spreading arching branches with clean foliage, remaining good until mid-winter. The bunches of shiny black berries are decorative.		
18-24"	3.00	25.00
Ovalifolium (California Privet).		
Most popular hedge plant. We offer good bushy 2-year stock.		
18-24"	1.50	6.50
2-3'	2.00	9.00



What a whale of a difference a few shrubs make

**THIS BIG DOZEN OF LANDSCAPE SHRUBS
FOR \$4.95**

This is a special price as this assortment includes six varieties in fully 3 to 4 ft. shrubs. These large shrubs are grown expressly for landscape purposes to produce immediate effect and are usually sold at 75c to \$1.00 each. For a foundation planting or as a shrub border or planted in individual groups about the lawn you cannot possibly beat this assortment. Pink flowers, red flowers, white flowers, yellow flowers. Green foliage and gold foliage. Red berries, black berries. Green bark, yellow bark, red bark, in fact in this assortment you have everything that one could wish for in a shrub collection and the price is only \$4.95 for one each of the following varieties. These shrubs are of the age and size to produce immediate effect. (For descriptions see pages 4 to 9 inclusive.)

- 1 DEUTZIA PRIDE OF ROCHESTER (3-4 ft. size)
- 1 FORSYTHIA FORTUNEI (3-4 ft. size)
- 1 PINK FLOWERING HONEYSUCKLE (3-4 ft. size)
- 1 OLD-FASHIONED SYRINGA (3-4 ft. size)
- 1 SNOWBERRY (18-24 inch, dwarf growing)
- 1 WEIGELA ROSEA (2-3 ft. size)
- 1 RED BARKED DOGWOOD (2-3 ft. size)
- 1 HYDRANGEA (2-3 ft. size)
- 1 SPIREA BRIDAL WREATH (3-4 ft. size)
- 1 JAPAN QUINCE (18-20 inch dwarf growing)
- 1 NEW RED LEAF BARBERRY (18-24 inch dwarf growing)
- 1 ROSA RUGOSA RUBRA (2-3 ft. size)



FRENCH HYBRID

They bloom when small, transplant easily, require little care and each Spring reward us with increasing charm of flower and foliage. Plant more Lilacs.

	Each	Per 10
2-3'	1.00	9.00
3-4'	1.50	12.00
4-5'	2.00	17.50

- ADELAIDE DUNBAR. Deep maroon in bud; flowers violet-red when open.
- ALPHONSE LAVALLEE. Bluish-lilac. Double.
- BELLE de NANCY. Pink flowers with white center.
- CHARLENBURG. Rosy-lilac. Very large, fine globular form.
- CHARLES X. Reddish-purple flowers.
- CONGO. Wine-red.
- DOCTEUR MASTERS. Medium to large. Light violet. Double to semi-double.
- FRAU BERTHA DAMMANN. Large panicles of pure white flowers.
- GEN. DRUCHAT. Rich pinkish or light red flowers.
- GEN. KITCHENER. Bluish-lilac tinged violet. Branching habit. Compact.
- GEN. SHERMAN. Flowers creamy lavender-lilac tinged porcelain blue.
- HIRAM EDGERTON. Bluish-lilac to violet-lavender when open.
- LAMARCK. Long clusters of rosy-lilac flowers.
- LEON SIMON. Flowers purplish-crimson shade.

LILACS—continued.

- MME. ABEL CHATENEY. Pure white flowers with large panicles.
- MME. LEMOINE. Pure white. Good forcer.
- MARIE LEGRAYE. Dwarf sort with creamy white flowers of immense size.
- MICHAEL BUCHNER. Clear lilac. Very large clusters Free-flowering.
- PHILEMON. Red-flowered variety.
- PRESIDENT GREVY. Lilac-blue flowers in large panicles.
- PRESIDENT HARDING. Reddish-lilac when fully open. Low, compact.
- PRESIDENT LINCOLN. Pure blue-violet in color.
- PRESIDENT ROOSEVELT. Bright purplish-red. Branching habit.
- PRINCESS ALEXANDRIA. White flowers.
- PRINCESS MARIE. Light, creamy lilac flowers.
- PROF. STOCKHARDT. Delicate rosy pink.
- VIVIAND-MOREL. Clear lilac with white center.
- WILLIAM C BARRY. Buds reddish-lilac. Silvery lavender when fully opened.

EVERGREEN SHRUBS

AZALEA, Amoena.

Evergreen, Grows broader than tall with good compact habit. The small box-like leaves take on a warm bronzy hue in winter, but in spring a mantle of magenta flowers is the striking feature.

	Each	Per 10
12-15" B & B	1.50	12.50
15-18" B & B	2.25	17.50

Kaempferi.

From salmon-pink to orange-red, the flowers transform this shrub into a thing of beauty. In a slightly shaded spot it is almost evergreen and the color of the flowers is preserved. Has successfully withstood our worst winters.

12-15" B & B	2.00	17.50
15-18" B & B.....	2.50	22.50

KALMIA, Latifolia (Mountain Laurel).

Evergreen. Doubtless the most valuable and beautiful of our broad-leaf evergreens. In July nothing can approach the glorious effect created by a mass of laurel with its great wealth of pink flowers. While most adaptable to sun or shade the ideal location is slight shade.

18-24" B & B	2.25	20.00
2-2½' B & B	2.75	24.00

PACHYSANDRA, Termivalis (Japanese Spurge).

A low growing evergreen plant with glossy dark green foliage. Adapted for covering the ground where it is difficult to establish grass.

	Per 10	Per 100	Per 1000
Field grown plants	2.50	20.00	150.00



Wisteria on pergola

CLIMBING AND TRAILING VINES

AMPELOPSIS, Quinquefolia (Virginia Creeper).

Vigorous, clings to walls making quick dense shade, leaves gorgeous in autumn; blue berries.

	Each	Per 10
2 Yr.50	4.50

Tricuspidata Veitchi (Boston Ivy).

Rapid growing. Clings to the smoothest surface; the deep green foliage turns crimson in Autumn. Blue berries.

2 Yr.50	4.50
------------	-----	------

BIGNONIA, Radicans (Scarlet Trumpet Vine).

Deep scarlet flowers in August.

2 Yr.60	5.50
------------	-----	------

EUONYMUS, Radicans (Creeping Euonymus).

Evergreen climber, rich green foliage; fruits pink.

2 Yr.50	4.50
------------	-----	------

Radicans Vegetus (Bigleaf Wintercreeper) Evergreen Bittersweet

Bushy interesting shrub. Leaves round dull green; bright scarlet fruits; freely produced. Handsome among Evergreens.

2 Yr.60	5.50
------------	-----	------

HOW LATE CAN I PLANT NURSERY STOCK IN THE SPRING?

This is the question that comes up every Spring during the month of May, after the first few warm days have come and made the buds swell. Dormant nursery stock may be planted with safety throughout the United States and Canada even late in the Spring. We keep our stock dormant by special methods until late in May. Last year our stock was dormant and we shipped until about the 10th of June. Our advice, however, is to place your order as early as possible. The earlier you plant, the longer the growing season.

CELASTRUS SCANDENS (American Bitter-sweet).

Orange-yellow capsules that display crimson seeds. Fine on trees or lattice.

	Each	Per 10
2 Yr.50	4.50

CLEMATIS, Coccinea.

Graceful vine with attractive foliage and noddling red flowers.

2 Yr.75	6.50
------------	-----	------

Henryi.

Flowers white. Large and showy.

2 Yr.75	6.50
------------	-----	------

Jackmani.

Large velvety purple flowers.

2 Yr.75	6.50
------------	-----	------

Mme. Baron Veillard.

One of the strongest growers of all the large flowering Clematis. Large pink blossoms produced in profusion.

2 Yr.75	6.50
------------	-----	------

Paniculata.

Rapid grower, free bloomer. Fragrant white flowers.

2 Yr.40	3.50
------------	-----	------

LONICERIA, Halliana (Hall's Japan Honeysuckle).

Evergreen Climber with fragrant white flowers that change to yellow.

2 Yr.50	4.50
------------	-----	------

Belgica (Monthly Fragrant Honeysuckle).

Yellowish white and pale purple all summer.

2 Yr.50	4.50
------------	-----	------

Sempervirens (Scarlet Trumpet Honeysuckle).

Rich scarlet flowers all summer.

2 Yr.50	4.50
------------	-----	------

LYCIUM, Chinensis (Matrimony Vine).

Hardy pink or purple flowers and scarlet berries.

2 Yr.50	4.50
------------	-----	------

POLYGONUM, Auberti (Silver Lace Vine).

Climbing plant of vigorous growth producing great foamy sprays of white flowers during summer and fall.

2 Yr.75	6.50
------------	-----	------

WISTERIA, Sinensis (Chinese Wisteria).

Purple May-June. Long drooping panicles.

2 Yr.	1.00	9.00
------------	------	------

Sinensis Alba (White Chinese Wisteria).

May-June.

2 Yr.	1.00	9.00
------------	------	------

Buffalo, N. Y., April 16th

Glen Brothers Inc.,

Rochester, N. Y.

Dear Sirs:

Your nursery stock which I have received recently has exceeded my fondest expectations. They were wonderful shrubs and so skillfully packed You are to be congratulated on your excellent methods of shipments and your equally excellent nursery stock.

Thoroughly satisfied.

Truly yours,

(Name given on request)



Make roses your hobby this summer

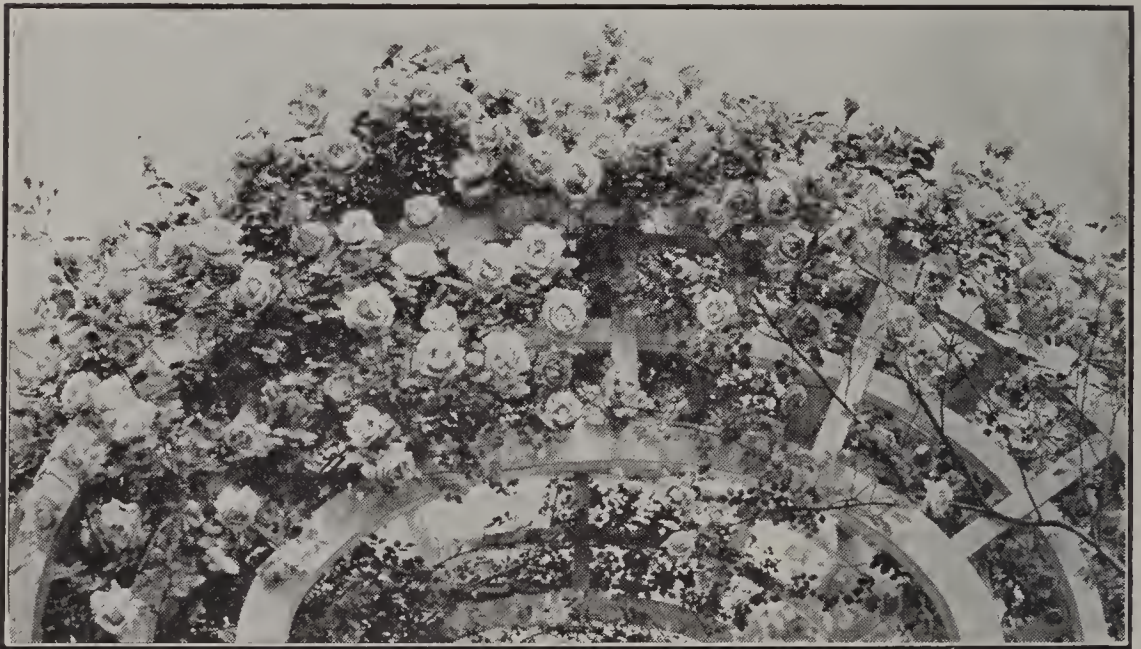
HYBRID TEA EVERBLOOMING ROSES

A splendid list of varieties. We offer only top grade stock of 2 Year field grown roses at .70 each; \$6.50 per 10. \$50.00 per 100.

- AMERICAN BEAUTY.** Brilliant pink to red. Delightfully fragrant.
- BETTY UPRICHARD.** Orange carmine on outside petals. Copper red buds.
- COLUMBIA.** Pink deeping as it opens.
- CRUSADER.** Large crimson-red flowers, lighter in the center.
- GOLD MINE.** Rich apricot yellow petals on hinges of old gold.
- GRUSS AN TEPLITZ.** Bright crimson. Fragrant.
- GOLDEN DAWN.** Deep yellow buds suffused with pink. Opening lemon-yellow.
- JOANNA HILL.** Clear yellow. Exquisitely formed.
- KILLARNEY.** Buds long and pointed, suffused pink. Lovely and distinct.
- LADY HILLINGDON.** Cup-like yellow flowers.
- LOS ANGELES.** Flame-pink shaded gold. Intensely fragrant.
- MME. BUTTERFLY.** Pale pink and gold.
- MME. EDOUARD HERRIOT.** Coral red buds, shaded yellow; flowers copper orange.

ROSES—continued.

- MRS. CALVIN COOLIDGE. Bright yellow changing to deep orange.
 MARGARET McGREDY. Cupped flowers of solid, orange-vermilion.
 PREMIER. Bright rose-pink. Very fragrant.
 F. R. PIERSON. Double flowers of brilliant crimson.
 PRESIDENT HOOVER. Orange and pink.
 RADIANCE. Brilliant carmine-pink with salmon pink shading.
 RED RADIANCE. A bright rosy red form of Radiance.
 SENSATION. Scarlet crimson.
 SOUVENIR de CLAUDIUS PERNET. Sunflower yellow.
 SUNBURST. Bright glowing orange blooms.
 TALISMAN. Old rose pink, copper and old gold.



HARDY CLIMBING ROSES

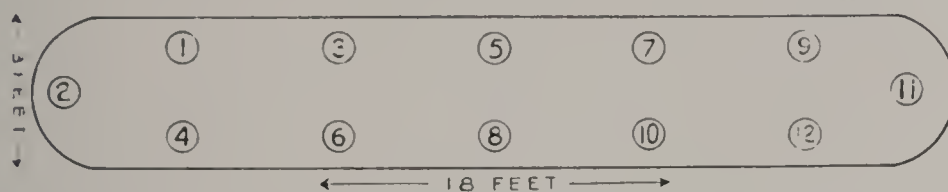
- | | Each | Per 10 |
|--|------|--------|
| | .60 | 5.00 |
| AMERICAN PILLAR. Brilliant pink single flowers. | | |
| CLIMBING AMERICAN BEAUTY. Large rich rosy crimson. Very fragrant. | | |
| DOROTHY PERKINS. Shell pink flowers borne in large clusters. | | |
| CRIMSON RAMBLER. Flowers small, double, brilliant crimson. | | |
| EXCELSA (Red Dorothy Perkins). Intense crimson pink, tinged scarlet. | | |
| JACOTTE. Orange yellow tinted coppery red. | | |
| PAUL'S SCARLET CLIMBER. Brilliant dazzling red. | | |
| DR. VAN FLEET. Deep pink. Very fragrant. | | |
| TAUSENDSCHON. Colors vary from pink to white. | | |

POLYANTHA OR BABY RAMBLERS.

- | | \$1.00 | \$9.00 |
|---|--------|--------|
| BABY RAMBLER CRIMSON. Crimson red color, borne in clusters. | | |
| BABY DOROTHY. Bright pink in large corymbs. Rapid grower. | | |

GLEN'S GORGEOUS ROSE BED IN BLOOM ALL SUMMER SIZE 18 x 3 FT.

If you have a small area in your yard, size 18x3 ft. that you desire to turn into a beauty spot this summer and every summer for years to come, here is how. Spade up a space in your yard like this



then plant the following Everblooming varieties of Roses and plant according to number. The number before each variety refers to the number on the plan, and all twelve plants for only \$5.50. All plants 2 years old and will bloom this summer.

1. **ETOILE de HOLLANDE.** Brilliant crimson red. Finest of all red roses. The blooms are wonderful and fragrant.
2. **DAME EDITH HELEN** A magnificent fragrance, full bodied new rose of richest pink, blooms full, many petaled and intensely fragrant. A beauty.
3. **MME. EDOUARD HERRIOT.** Winner of the \$50,000 prize offered by the London Daily Mail. Coral red buds shaded yellow, copper-orange and tinted yellow and scarlet. This rose has a beautiful bud, exquisite colorings, long and continued blooming. Fragrant.
4. **PRES. HERBERT HOOVER.** A glorious multi-colored rose that became popular over night. Color: vivid cerise-pink, softly flamed with yellow, orange and scarlet.
5. **E. G. HILL.** Large deep crimson, blooms in abundance throughout the season. We regard E. G. Hill as an outstanding red rose.
6. **MRS. P. S. DuPONT.** A great prize-winning rose. Clear yellow with orange-yellow heart. Long lasting blooms all summer and Fall. A great beauty.
7. **KAISERIN AUGUSTA VICTORIA.** Full double flowers; delicate creamy white; deliciously fragrant.
8. **LOS ANGELES.** One of America's finest two-tone roses. Flowers large and continuous in color; flame pink toned with coral and shaded with translucent gold at the base.
9. **MARGARET McGREDY.** One of the showiest of all roses. Rich Oriental red, passing to carmine-rose. Blooms all season. Spicy fragrance.
10. **ROSLYN.** Orange buds; full gold and yellow flowers, with deeper center.
11. **PINK KILLARNEY.** Intensely brilliant, clear pink. The flower is perfect.
12. **TALISMAN.** The most gorgeous assemblage of colors in one flower ever presented by a rose. Gold apricot-yellow, blood orange deep pink and old gold. Very fragrant and probably the most popular rose in America today.



Perennials. Make your garden a riot of color all summer

HARDY HERBACEOUS PERENNIALS

A careful selection of this list will give you a riot of color from early Spring until late Autumn. Perennials are planted permanently and each succeeding year adds to the vigor of the plant and new flowers will appear each year with greater strength and beauty.

Prices of all Perennial Plants except where otherwise noted: 3 for 75c; \$2.25 per 10; \$20.00 per 100.

Approximate height variety attains is given after the name.

ACHILLEA,

BOULE de NEIGIE, white, 12-15 in. June.

AJUGA.

REPTANS, blue, 3-4 in. Rock plant. May-June.

ALYSSUM.

SAXATILE COMPACTUM, yellow, 9-12". Rock plant. Spring.

ANCHUSA,

ITALICA DROPMORE, blue 3-4 ft. Spring.

MYOSORIDIFLORA, blue, 12-18". Rock plant. April-May.

ANEMONE.

JAPONICA ALBA, white 2-3 ft. Sept-Oct.

JAPONICA, QUEEN CHARLOTTE, pink 2-3 ft. Sept-Oct.

AQUILEGIA.

MRS. SCOTT ELLIOTT HYBRIDS, all shades 2-3 ft.

ARABIS.

ALPINA, white, 8 in. Rock plant. Spring.

AMERIA.

LAUCHEANA, rosy-red 3-6 in. Rock plant. May-June.

ARENARIA.

MONTANA, white, 8-10 in. Spring.

CAMPANULA.

MEDIUM, blue-white, rose.

CARPATICA, blue-white, 3 in. Rock plant. June-Sept.

CENTUREA.

DEALBATA, rose pink 2ft. June-July.

MONTANA, violet-blue 2 ft. July-Sept.

CHRYSANTHEMUMS.

BARBARA CUMMING, orange-bronze. 8 in. Sept-Oct.

JEAN TREADWAY, rose-pink, dark center 2 ft. Oct.

PINK CUSHION, pink, 12 in. Late Sept.

SKIBO, rich yellow. 2 ft. Sept.

VIVID, rosy crimson, 2 ft. Sept.

JEAN CUMMING, white 2 ft. Sept.

**COREOPSIS.**

LANCEOLATA GRANDIFLORA, yellow 2 ft. All summer.

DELPHINIUM.

BELLADONNA, turquoise-blue 3 ft. June-Sept.

BELLAMOSUM, light blue, 3 ft. June-Sept.

DIANTHUS.

BARBATUS, mixed colors, 2 ft. May-June.

DICTAMNUS.

FRAXINELLA ALBA, white 2½ ft. June-July.

Price: 3 for 90c; \$2.50 per 10.

FRAXINELLA RUBRA, rose-pink 2½ ft. June-July.

Price: 3 for 90c; \$2.50 per 10.

DICENTRA.

SPECTABILIS, (Bleeding Heart), pink 18-24 in. May or June.

Price: 40c each, 3 for \$1.00.

DIGITALIS.

GLOXINAEFLORA, mixed colors, 3-4 ft. June-July.

DORONICUM.

CAUCASIUM, bright yellow, 2 ft. May.

FUNKIA.

SUBCORDATA GRANDIFLORA, white, 1½ ft. Aug.

GAILLARDIA.

GRANDIFLORA, orange and gold, 18 in. All summer.

GYPSOPHILA.

BRISTOL FAIRY, white, 18-24 in. July-Aug.

HELIOPSIS.

SCABRA, Chrome yellow, 3 ft. July-Sept.

HEMEROCALLIS.

FLAVA, clear yellow 2½ ft. June.

HEUCHERA.

ROSEMONDI, coral-pink, 12-18 in. Rock plant. May-July.

HOLLYHOCKS.

In variety. Mixed colors, 4-5 ft. July-Aug.

HIBISCUS.

MALLOW, pink, red, white, 4-5 ft. July-Aug.

Price: 3 for 90c; \$2.50 per 10.**IBERIA.**

SEMPERVIRENS, white, 6-8 in. Rock plant May-June.

IRIS, Germanica (GERMAN IRIS).

AGNES. S. white F. white traced lilac, 2-3 ft.

GERTRUDE. S. and F. Beautiful blue 2-3 ft.

CAPRICE. S. Rosy-red F. Bright crimson 2-3 ft.

HER MAJESTY. S. rose-pink F. rich maroon 2-3 ft.

INNOCENSA. Ivory white 2-3 ft.

IRIS KING. S. Clear yellow; F. rich maroon 2-3 ft.

KHEDIVE. Soft lavender 2-3 ft.

LORELY. S. Light yellow F. blue bordered cream 2-3 ft.

MARY GARDEN. S, pale yellow, F. creamy white 2-3 ft.

MRS. H. DARWIN. S, pure white, F, violet at base 2-3 ft.

IRIS, Kaempferi (JAPANESE IRIS).

BEAUTY. Lavender, yellow and white 2-3 ft.

DATE-DUGO. Single, dark rich crimson 2-3 ft.

FAIRY. Dark purple, early 2-3 ft.

KAN. Double violet, pink center 2-3 ft.

KICHI-COHUO. Single pure white 2-3 ft.

OSHO-KUM. Double rich blue 2-3 ft.

PARAGON. White, very large and fine 2-3 ft.

ROYAL ROSE. Rose edged white 2-3 ft.

SHI-CHU-HA. Double, white with red edges 2-3 ft.

SHIKAI-NAMI. Double beautiful pale blue 2-3 ft.

Price: 3 for \$1.00; \$3.00 per 10.**LAVENDULA.**

VERA, sweet lavender, 18 in. July-Aug.

LIATRIS.

PYCNOSTACHYA, purple, 3-4 ft. Aug.

LUPINUS.

POLYPHYLLUS, blue, white rose, 3 ft. June-Sept.

LYCHNIS.VISCARA SPLENDENS, brilliant red, 12 in. Rock plant.
June- July.**MONARDA.**

DIDYMA, brilliant crimson, 2½ ft. June-Aug.

OENOTHERA.

MISSOURIENSIS, yellow, 12 inch. Rock plant. June-Aug.

PLATYCODON.

GRANDIFLORUS, blue and white, 2½ ft. June-Aug.

PHYSOSTEGIA.

VIVID, violet mauve 18 in. Rock plant Sept-Oct.

PAPOVER.

ORIENTALIS, orange-crimson 3 ft. May-June.

PHLOX.

SUBULATA ALBA, white 2 in. Rock plant May.

SUBULATA ROSEA, rose-pink. Rock plant 2 in. May.

BRIDESMAID, pure white crimson eye 2-3 ft. July-Aug.

JULES SANDEAU, pure pink 2-3 ft. July-Aug.

ENCHANTRESS, salmon-pink 2-3 ft. July-Aug.

MISS LINGARD, pearly white, delicate pink eye 2-3 ft.
July-Aug.

AFRICA, brilliant red 2-3 ft. July-Aug.

CAROLINE VANDENBERG, blue 2-3 ft. July-Aug.

MRS. WILLIAM JENKINS, pure white 2-3 ft. July-Aug.

PRIMULA.POLYANTHUS HYBRIDS, white, crimson yellow 6 in. Rock
plant Early Spring.**PYRETHRUM.**

HYBRIDUM, white pink, rose, 2-2½ ft. May-June.

RUDBECKIA.

PURPUREA, reddish purple 2-3 ft. Aug.



SALVIA.

AZUREA GRANDIFLORA, sky blue 3-4 ft. Aug.

SCABIOSA.

CAUCASIA, lavender 18-24 in. June-Sept.

SEDUM: Rock plants in variety 2-8 in. May-Sept.

SEDUM.

SPECTABILIS, brilliant bright red, 18 in. Aug-Sept.

STOKESIA.

CYANEA, azure blue 12-18 in. Aug.

TROLLIUS.

EUROPEAUS, yellow-orange, 2 ft. May-June.

Price: 3 for 90c; \$2.50 per 10.

TRITOMA.

PFITZERI, orange-scarlet, 3 ft. Aug-Sept.

TRADESCANTRA.

VIRGINICA, blue, 18 in. All summer.

VERONICA.

LONGIFOLIA SUBSESSLIS, deep blue 2 ft. July-Aug.

RUPESTRIS, bright blue 2-3 ft. Mid-summer. Rock plant.

YUCCA FILAMENTOSA.

Creamy white flowers, 3-4 ft. Late summer.

Price: 3 for \$1.00; \$3.00 per 10.

PEONIES

Among the most hardy, showy and easily grown of all garden flowers; the flowers are the largest of all double-flowering perennials. Ours are strong divisions with three to five eyes:

VARIETIES:

	Each	Per 10	Per 100
CANARI. Blush-yellow.	.50	4.50	35.00
COURONNE DE OR. White.			
EDULIS SUPERBA. Light-pink.			
FELIX CROUSE. Clear rich-red.			
FESTIVA. White.			
LONGFELLOW. Crimson, cherry tone.			
LOUIS VAN HOUTTE. Dark crimson.			
MESSONIER. Brilliant crimson.			
PURPUREA. Dark purple.			
RUBRA SUPERBA. Light pink.			
SARAH BERNHARDT. Bright flesh-pink.			
VICTORIA. White.			



Original cost of these Trees possibly \$50.00; present value probably \$1,000.

ORNAMENTAL SHADE TREES

The succeeding list represents the most favored trees for lawn adornment and the best type for street planting. Each tree has been given ample distance apart in the nursery row to insure a good root system and a well branched top.

ACER (Maple)

Acer Dasycarpum (Silver-leaved Maple).

Quick growing, graceful shade tree, leaves silvery underneath.

	Each	Per 10
8-10'	\$1.50	\$13.50
10-12'	2.00	16.50

Acer Platanoides (Norway Maple).

The most popular street tree; retains its green leaves until late Autumn.

8-10'	3.00	26.50
10-12'	4.50	36.50

Acer Schwedleri (Schwedleri Maple).

Probably the best growing large purple leaf tree. Useful as lawn specimen.

8-10'	3.50	30.00
10-12'	4.25	40.00

Acer Rubrum (Red Maple).

Branches spreading; red blossoms in spring before the foliage; in autumn the leaves are brilliant red and scarlet.

8-10'	2.75	22.50
10-12'	4.00	33.00

Acer Saccharum (Sugar Maple).

Most popular in northern states; best planted in spring; has rich yellow autumn coloring.

8-10'	3.00	26.50
10-12'	4.00	33.00

Each Per 10

AESCULUS (Horse Chestnut).

Aesculus Hippocastanum (White flowering Horse Chestnut).

Vigorous, rapid-growing tree giving dense shade, showy white flowers; dark green leaves.

4-5' 2.25 20.00

BETULA (Birch).

Betula Alba (European White Birch).

Rapid growing. Handsome silvery white bark.

10-12' 3.75 35.00

12-14' 5.00 45.00

Betula Alba Pendula laciniata (Cut-leaved Weeping Birch).

Bark silvery white. Excellent tree for lawn planting. Graceful

6-8' 2.50 21.00

CATALPA.

Catalpa Bungei (Umbrella Catalpa).

6-8' stems, 2 yr. heads..... 1.50 12.50

CORNUS (Dogwood).

Cornus florida (White dogwood).

Foliage turns to deep red in autumn; scarlet berries very showy.

4-5' 1.50 12.50

5-6' 2.50 22.50

Cornus florida rubra (Red or pink flowering dogwood).

Flowers deep pink. An unusual attraction where the white is familiar.

3-4' 2.25 20.00

4-5' 3.75 32.50

GINKGO Biloba (Maidenhair Tree).

Full of interest, historically and physically. Practically insect, dust and disease proof; good for city planting. Slow grower.

4-5' 2.75 25.00

GLEDITSIA Robinia Pseudoacacia (Black Locust).

Bears pendant racemes of yellowish-white flowers.

5-6' 1.00 9.00

LIRIODENDRON (Tulip Tree).

A quick grower. The yellow tulip-like flowers are produced in June.

6-8' 1.80 15.00

8-10' 2.50 22.50

MAGNOLIA (Saucer Magnolia).

Soulangeana.

Great purplish-pink cups in early spring. A spectacular member of this glorious family.

2-3' B-B 3.50 32.50

MALUS (Crab).

Malus Ioensis plena (Bechtel's Double flowering Crab).

A low bushy tree that is sturdy, hardy and blooms young. The flowers are double, delicate pink and delightfully fragrant.

3-4' 1.00 9.00

Malus Niedzwetzkyana (Redvein crab).

Leaves, flowers, fruit, bark and even the wood are reddish purple, improves with age; give space to develop.

3-4' 1.00 9.00



Illustrated 2 of our North China Strain Chinese Elms planted 5 years ago when 4 ft. tall. These trees now are 40 feet tall and are planted in front of the residence of Dr. Clarence Thomas, Greenfield Lane, Rochester, N. Y.

OUR NORTH CHINA STRAIN CHINESE ELM

If you want quick shade—it's THE TREE to plant. It's the fastest growing tree we know of—having none of the undesirable root characteristics of the Poplar—IT'S STRICTLY AN ELM.

IT IS AS GRACEFUL AS A CUT LEAVED BIRCH AND AS HARDY AS AN OAK. GOOD FOR STREET PLANTING, WINDBREAKS, SCREENS OR AS INDIVIDUAL SPECIMENS ABOUT THE LAWN.

Mrs. Baas Farguhar, 1136 Calhoun Ave., Bronx, N. Y., writes:

“There is not a tree to compare with the Chinese Elm for swift growth, beauty of leaf, shade and marvelous to look at. I think it is one of God's prettiest trees. You promised it would grow 20 feet in 4 years. It grew 26 feet in 4 years and what a beauty it is.”

Mrs. J. W. Baillie, 16558 Kentucky Ave., Detroit, Mich., writes:

“Two Chinese Elms purchased from you, one in 1930 and the other in 1931 are large trees and the wonder of the neighborhood. This is surely the tree to plant if you want shade in your own lifetime.”

PRICES

Size	Each	Per 10	Per 100
4-5'	\$1.00	\$ 8.75	\$ 75.00
5-6'	1.50	13.75	125.00
6-7'	2.00	17.50	150.00
8-10'	2.50	22.50	200.00
10-12'	3.75	35.00	325.00



LOMBARDY POPLAR

MORUS (Mulberry).

Morus Alba Tartarica (Russian Mulberry).

White to violet-colored fruit greatly relished by birds.

	Each	Per 10
6-8'	1.50	12.50
8-10'	2.50	22.50

Morus Alba Tartarica Pendula (Teas' Weeping Mulberry).

Fine weeping tree. Foliage is glossy; fruit reddish purple.

2 Yr. heads, 4' stems	2.00
-----------------------------	------

PLATANUS (Plane).

Platanus Orientalis (Oriental Plane).

A good tree for park and street use. Grows rather rapidly.

8-10'	2.50	24.00
-------------	------	-------

POPULUS (Poplar).

Poplar Deltoides Carolinensis (Carolina Poplar).

A rapid grower. Succeeds even in dry places and near seashore.

8-10'	1.00	7.50
10-12'	1.25	10.00

Poplar Nigra Italica (Lombardy Poplar).

Tall spiral-like character. Valued for landscape work. Ours are low branched, Italian style.

6-8'85	7.00
8-10'	1.00	7.50

Each Per 10

PRUNUS (Flowering Almond, Cherry, Plum, Peach).

The species below are charming on account of their habit of growth and profuse bloom.

Prunus Glandulosa (Flowering Almond).

Low growing, bushy, double white and rose-colored flowers.

3-4' 1.00 9.00

Prunus Yoshina (Pink flowering Cherry).

The single pink flowers become flushed with purple before falling. An excellent shade tree. More than 300 Yoshina Cherry are planted around the Tidal Basin in Washington, D. C.

4-5' 2.25 19.00

Prunus Persica Plena (Double flowering Peach).

A vision of loveliness not equalled by anything else that blooms at the same time. The profusion of bloom is amazing.

4-5' 1.00 9.00

Prunus Triloba Plena (Double flowering Plum).

Small tree with slender branches literally covered with double rosy flowers in early summer.

3-4' 1.00 9.00

Prunus Cerasifera Pissardi (Purple-leaved Plum).

Dark crimson foliage changing to purple as it matures.

4-5' 1.00 9.00

QUERCUS (Oak).

Quercus Palustris (Pin Oak).

Rapid growing, pyramidal tree. Foliage lobed. Bright green foliage dark-red in autumn.

5-6' 2.50 22.50

Quercus Rubra (Red Oak).

Rich autumn coloring in greens and reds.

6-8' 4.00

SALIX (Willow).

Salix Babylonica (Common Weeping Willow).

Familiar in cemeteries and along water.

6-8' 1.75 15.00

8-10' 2.50 22.50

Salix Vitellina Aurea (Golden Willow).

Light green leaves and golden yellow branches.

10-12' 2.50 22.50

SALIX DISCOLOR (New French Pussy Willow).

Buds and blooms very large, from one to 2 inches long.

Fragrant.

4-5' 1.00 9.00

SORBUS (Mountain Ash).

Sorbus Aucuparis (European Mountain Ash).

A valuable tree on a small lawn; the scarlet berries are quite striking.

6-8' 1.50 13.50

8-9' 2.50 22.50

TILIA (Linden).

Tilia Americana (American Linden).

Grows rather quickly, forming an open head. Has fragrant yellow flowers.

8-10' 2.50 22.50

ULMUS (Elm).

Ulmus Americana (American Elm).

Stateliness and dignity are here exemplified. Fairly rapid in growth. Beautiful in summer and winter.

8-10' 2.50 22.50

10-12' 3.50 31.50



Babylonica Willow

DISTINCTIVE AND BEAUTIFUL WEEPING WILLOW

This is the common Weeping Willow. It is hardy, grows rapidly and is a valuable and interesting tree both on account of its graceful aspect, showy catkins and bright bark. Attractive for planting beside creeks, ponds, pools and other waterside planting, although equally satisfactory in dry locations. Babylonica Willow has long lacy whiplike branches weeping to the ground. It is one of the most remarkable trees. The leaves are narrow, tapering to a long point and bright green. The bark is particularly handsome in winter. Owing to its irregularity of growth in the nursery row all our trees are carefully staked to insure a straight trunk with a nice full branched weeping head. We can offer these trees in 2 sizes:

- 6 to 8 ft. size \$1.75 each; \$15.00 per 10
- 8 to 10 ft. size 2.50 each; 22.50 per 10

GLEN'S SPECIAL LAWN GRASS SEED

We offer you in the Special Lawn mixture the last word in high grade lawn seed. It produces the heavy velvety lawn that is your great desire. This mixture is carefully inspected and kept free from weeds that are so injurious to the lawn.

Price: 1 lb., \$.50; 5 lbs., \$2.25;
 25 lbs., \$11.00; 100 lbs., \$42.50.



*Pyramidal
Arborvitae
At Glenwood Nursery*

CONIFEROUS EVERGREENS

A planting that depends entirely upon deciduous trees for ornamental effects is sure to have a bleak appearance during the winter months. Our evergreens have been transplanted, they are amply spaced in the nursery and lifted with a solid ball of dirt which insures success in transplanting. All evergreens are carefully packed for shipping, each layer or tier when packed in the box is securely cleated to prevent the plants from shifting in transit. We guarantee safe delivery of all evergreens purchased from us.

ABIES (FIR).

Abies Balsamea (Balsam Fir).

A rapid growing tree 50 to 80 ft. high with dark green spicy foliage. Hardy.

	Each
4-5' B & B	\$5.50
6-8' B & B	7.50

Abies Concolor (White Fir).

Graceful form, handsome foliage; glinting blue and silver.

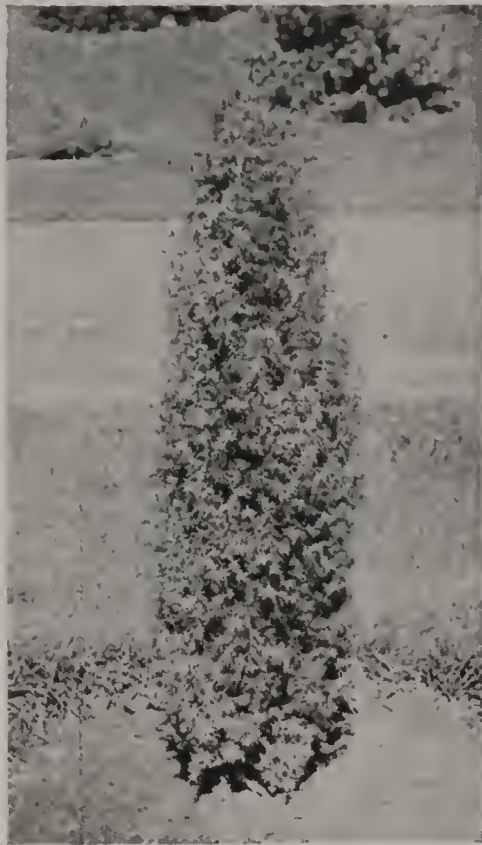
2-3' B & B	3.00
3-4' B & B	5.00

JUNIPERUS

Jun. Columnaris Pyramidalis (Blue Columnar Chinese Juniper).

Compact narrow pyramidal form, bluish-green needle-like foliage.

2-3' B & B	2.00
3-4' B & B	3.25



JUNIPERUS—Continued.

Jun. Pfitzeriana (Pfitzer Juniper).

Spreading graceful habit with silvery green color.

18-24'' B & B 2.50

Jun. Hilbernic (Irish Juniper).

Branches upright, densely covered with dark green foliage.

4-5' B & B 3.75

5-6' B & B 5.25

Jun. Horizontalis (Trailing Juniper).

Handsome ground covering type. Color fresh grey-green.

18-24'' B & B 1.75

2-3' B & B 2.25

Jun. Sabina (Savins Juniper).

Low, bushy, spreading with dense dark green foliage.

15-18'' B & B 1.50

18-24'' B & B 2.25

Jun. Tamariscifolia (Tamarix Juniper).

Trailing. Foliage bright green, bronze in winter.

15-18'' B & B 2.00

Jun. Virginiana (Red Cedar).

Tall native tree of great beauty, hardiness and handsome appearance.

4-5' B & B 4.00

5-6' B & B 5.50

Jun. Virginiana Glauca (Blue Cedar).

Beautiful silvery blue foliage. Hardy and transplants easily.

2-3' B & B 3.75

3-4' B & B 4.75

4-5' B & B 6.50



Glenwood Nursery Evergreens. 50,000 to choose from.

THUYA (Arborvitae).

Thuya Occidentalis Compacta (Parson's Compact Arborvitae)
Thuya Occidentalis (American Arborvitae).

Evergreen. Slender pyramid with broad base. Bronzy winter coloring.

	Each
2-3' B & B	1.20
3-4' B & B	1.50
4-5' B & B	2.25

vitae).

A low growing, dense globular form of the above with greyish green foliage.

24-30" B & B	1.50
--------------------	------

Thuya Occidentalis Globosa (Globe Arborvitae).

Globular in form and of low dense growth. Beautiful light green.

18-24" B & B	1.35
24-30" B & B	1.80
2½-3' B & B	2.00

Thuya Occidentalis Hoveyi (Hovey's Golden Arborvitae).

A compact growing variety of distinct conical shape; light golden green.

2-2½' B & B	1.80
2½-3' B & B	2.25

Thuya Occidentalis Lutea (Geo. Peabody's Golden Arborvitae).

Dwarf, dense growing, pyramidal form with golden yellow foliage.

2-3' B & B	1.35
3-4' B & B	2.00

Thuya Occidentalis Pyramidalis (Pyramidal Arborvitae).

Splendid for formal planting. Retains bright green color throughout winter.

3-4' B & B	2.00
4-5' B & B	2.70
5-6' B & B	3.75

Each

Thuja Occidentalis (Tom Thumb, Arborvitae).

Fine low-growing form of slow symmetrical growth. Hardy.

18-24" B & B	1.50
2-3' B & B	2.50

Thuja Occidentalis Wareana (Siberian Arborvitae).

Broad pyramidal in shape of slow dense-growth with stout branches and bluish green foliage.

18-24" B & B	1.25
2-3' B & B	2.00
3-4' B & B	2.75

PICEA, Spruce.

Picea Canadensis Albertiana (Black Hills Spruce).

A hardy variety of the well known white Spruce. Dark foliage.

2-3' B & B	2.00
3-4' B & B	3.00

Picea Pungens (Colorado Green Spruce).

Exactly like Colorado Blue except that the foliage is green.

3-4' B & B	4.00
4-5' B & B	5.50

Picea Pungens Glauca (Colorado Blue Spruce).

Its regular pyramidal shape and beautiful silvery blue foliage are exceptionally ornamental.

2-3' B & B	3.75
3-4' B & B	5.25
4-5' B & B	7.50

Picea Excelsa (Norway Spruce).

Dark green foliage and grows rapidly. Makes a fine windbreak.

2-3' B & B	2.00
3-4' B & B	2.75
4-5' B & B	3.50

PSEUDOTSUGA, Douglassi (Douglas Fir).

Handsome and symmetrical. Foliage grey-green with soft pleasing texture.

2-3' B & B	2.00
3-4' B & B	3.00

PINUS, Pine

Pinus Nigra (Austrian Pine).

Robust grower, very dark green. Does especially well at the seashore.

2-3' B & B	2.00
3-4' B & B	3.00

Pinus Montana Mughus (Mugho Pine).

Most conspicuous in spring when the erect candles of new growth decorate the top of the low flat cushion-like bush.

15-18" B & B	2.00
18-24" B & B	3.00

Pinus Resinosa (Red Pine).

Spreading branches covered with long green needles.

2-3' B & B	2.25
3-4' B & B	3.00

Each

RETINOSPORA (Chamaecyparis or Cypress).

Ret. Filifera (Thread Cypress).

The branches are thread-like and droop gracefully; foliage bright green.

18-24" B & B	1.25
2-3' B & B	1.75
3-4' B & B	3.00

Ret. Pisifera Aurea (Golden Sawara Cypress).

Evergreen. Foliage bright yellow especially in spring.

3-4' B & B	2.75
4-5' B & B	3.50

Ret. Pisifera (Sawara Cypress).

Quickly, develops into loose pyramid; hardiest of the family.

4-5' B & B	3.50
5-6' B & B	5.00

Ret. Plumosa (Plume Cypress).

Evergreen. Forms a dense cone of fine texture. Useful for shearing into formal shapes.

18-24" B & B	1.25
2-3' B & B	2.00
3-4' B & B	2.75

Ret. Squarrosa.

Silvery blue, feathery foliage. May be kept at any height by pruning.

2-3' B & B	2.50
3-4' B & B	3.50

Ret. Thunbergi (Thunberg's Cypress).

Soft steel colored foliage unlike any other evergreen.

12-18" B & B	1.50
18-24" B & B	2.50
2-3' B & B	3.50

TSUGA (Hemlock).

Taxus Canadensis (Canadian Hemlock).

Dark green beautiful tree, the rich coloring being retained all winter.

18-24" B & B	2.50
2-3' B & B	3.25

TAXUS (Yew).

Taxus Capitata (Upright Yew).

Handsome well filled pyramids so effectively used in formal gardens or as lawn specimens.

18-24" B & B	2.25
2-3' B & B	2.75

Taxus Cuspidata (Japanese Yew).

Splendid vigorous tree. The dark green leaves are often bejewelled with brilliant crimson fruits in autumn.

15-18" B & B	2.25
--------------------	------

TSUGA CANADENSIS (Canadian Hemlock).

Beautiful free drooping trees but may be used as a tall hedge, dark green; the rich coloring being retained all winter.

	Each	Per 10
18-24" B & B	\$1.50	\$13.50
2-2½' B & B	2.00	17.50
2½-3' B & B	2.50	22.50
3-3½' B & B	3.50	32.50



HARDY NUT TREES

AMERICAN BLACK WALNUT.

For roadside planting or reforestation, we have these valuable trees in quantity at the following prices.

	Each	Per 10
5-6'	1.50	13.50
6-8'	1.75	16.50

BUTTERNUT.

One of the finest of natives trees.

5-6'	1.50	13.50
6-8'	1.75	16.50

ENGLISH WALNUT (Juglans Regia).

English Walnuts grown by us are produced from seed borne by trees grown in this locality, hence we can recommend them as being hardy and it is reasonable to expect these acclimated trees will thrive wherever peaches or cherries succeed.

2-3'	1.50
3-4'	2.00

FILBERT.

Moderately rich, well-drained soil is required. The nuts should not be gathered until ripe which condition is indicated by a browning of the husk.

KENTISH COB (Nuts long).

3-4'	1.75	16.50
4-5'	2 00	18.50

LARGE GLOBE (Nuts roundish).

3-4'	1.75	16.50
4-5'	2 00	18.50

ITALIAN RED (Nuts long).

3-4'	1.75	16.50
4-5'	2 00	18.50

EARLY GLOBE (Nuts round).

3-4'	1.75	16.50
4-5'	2 00	18.50

HICKORY (Shagbark).

Esteemed as the choicest of native nuts.

2-3'	1.50	13.50
------------	------	-------



Glen Trees bear young

**FRUIT DEPARTMENT
APPLE TREES**

Set 30 feet apart in rows 30 feet apart. 2 YEAR OLD TREES, 5-6 ft. FRESH DUG—FULL OF PEP.

	Each	Per 10	Per 100
Price85	7.50	65.00

SUMMER VARIETIES

- RED ASTRACHAN. Deep crimson.
- YELLOW HARVEST. Bright straw color.
- YELLOW TRANSPARENT. Pale yellow.

AUTUMN VARIETIES

- FAMEUSE. Snow. Bright red.
- GRAVENSTEIN. Yellow overlaid with red.
- MAIDEN'S BLUSH. Yellow with red cheek.
- OLDENBURG. Red streaks on yellow ground.
- TWENTY OUNCE. Yellow splashed with red.

WINTER VARIETIES

- BALDWIN. Deep red.
- BANANA. Yellow pinkish red blush.
- CORTLAND. Beautiful red.
- DELICIOUS. Dark red.
- GRIMES GOLDEN. Golden yellow.
- KING. Red.
- McINTOSH. Deep red.
- NORTHERN SPY. Bright red, striped.
- OPALESCENT. Light red to dark crimson.
- R. I. GREENING. Greenish color.
- SEEK-NO-FURTHER. Yellow striped with red.
- STAYMAN'S WINESAP. Yellow ground covered with red.
- WAGENER. Beautiful bright red.
- WEALTHY. Deep red.
- WOLF RIVER. Yellow, flushed with crimson.

DWARF APPLE TREES

Set 10 feet apart in rows 10 feet apart. 4 YEAR OLD TREES, 5-7 ft. (fresh dug).

Price \$2.25 each \$20.00 per 10

—Varieties—

BALDWIN
DELICIOUS
McINTOSH
NORTHERN SPY

RED ASTRACHAN
R. I. GREENING
WEALTHY
YELLOW TRANSPARENT

CRAB APPLES

2 YEAR OLD TREES—4-6ft. (Fresh dug)

Price \$1.00 each; \$9.00 per 10 (unless otherwise noted)

—Varieties—

HYSLOP. Deep crimson.
TRANSCENDENT. Yellow striped with red.
WHITNEY. Green splashed with crimson.

DOLGO CRAB

Red, a rich red-red all over. Dolgo jells perfectly. It is excellent for canning. Bears early and abundantly. Extremely hardy. Apple trees are commonly planted back in the garden or orchard. You can and should put Dolgo on the lawn as it is beautiful as an ornamental, giving a happy combination of splendid qualities in fruit with a shapely tree, beautiful in flowers and in fruit. The fiery red clusters are a handsome sight.

	Each	Per 10
3 Yr. 5-7'	\$1.25	\$12.00
4 Yr. 7-9'	1.75	16.50

CHERRY TREES

Set 18 ft. apart in rows 18 ft. apart. (Fresh dug).

2 YEAR OLD TREES, 5-6 ft. tall, \$1.00 \$9.00

Sweet

BING. Handsome dark brown.
DIKEMAN. Coal black.
GOV. WOOD. Light yellow, red cheek.
LAMBERT. Purplish red.
NAPOLEON. Pale yellow, spotted red.
SCHMIDT. Deep crimson-black.
SENECA. Black.
TARTARIAN. Black.

Sour

EARLY RICHMOND. Crimson.
MONTMORENCY. Clear shining red.

PLUM TREES

Set 18 ft. apart in rows 18 ft. apart. (Fresh dug).

2 YEAR OLD TREES, 5-7 ft. tall, Each Per 10
\$1.00 \$9.00

BRADSHAW. Dark violet-red.
BURBANK. Cherry red.
DAMSON. Blue.
GREEN GAGE. Yellowish green; brown dots
LOMBARD. Violet-red.

PLUMS (Cont'd).

PRINCES YELLOW GAGE. Golden yellow.
 OCTOBER PURPLE. Purple.
 RED JUNE. BRILLIANT red.
 WICKSON. Glowing crimson.

PEAR TREES

Set 20 ft. apart in rows 20 ft. apart—2 YEAR OLD TREES—5-6 ft. tall (fresh dug).

Each Per 10
\$1.00 \$9.00

Summer varieties

BARTLETT. Yellow with red blush.
 CLAPP'S FAVORITE. Yellow with dull red cheek.

Autumn varieties

ANGOULEME. Greenish yellow and russet.
 ANJOU. Yellow, dull red cheek.
 FLEMISH BEAUTY. Green-yellow and russet.
 KIEFFER. Rich yellow tinged with red.
 SECKEL. Yellowish russet, red cheek.

DWARF PEAR TREES

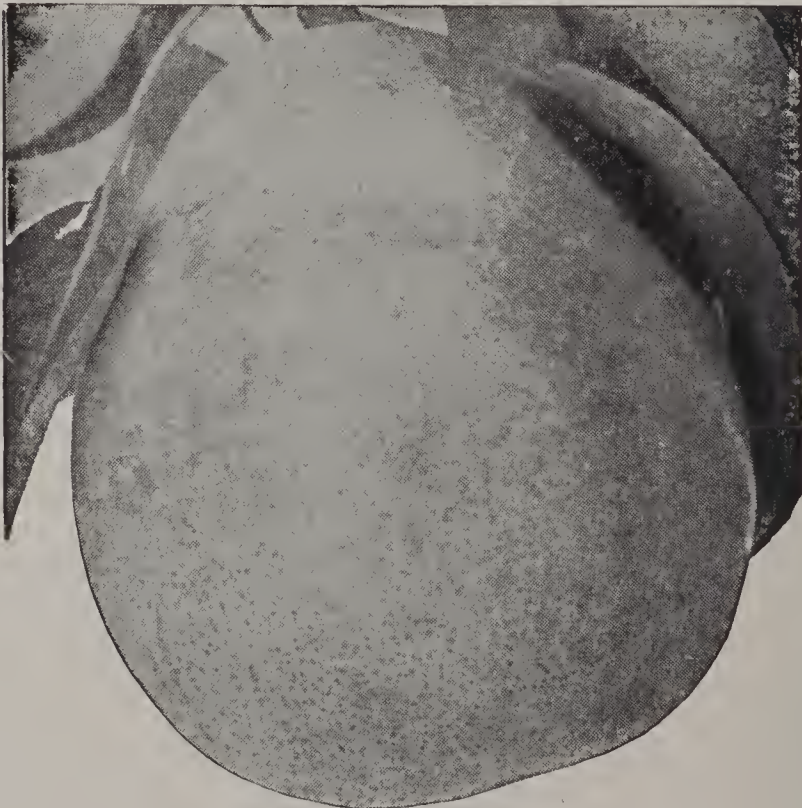
Set 12 ft. apart in rows 12 ft. apart—2 YEAR OLD TREES, EXTRA FINE. 3-5 ft. tall (fresh dug).

Each Per 10
\$1.00 \$9.00

Varieties

ANGOULEME
 ANJOU
 KIEFFER

BARTLETT
 SECKEL
 CLAPP'S FAVORITE





Yellow
Free-
Stone

Ripe
in
August

ROCHESTER PEACH

PEACHES

Set 20 ft. apart in rows 20 ft. apart.

	Each	Per 10	Per 100
3-4'50	4.50	35.00
4-5'60	5.50	50.00
5-6'	1.00	9.00	75.00

Early varieties

- BELLE OF GEORGIA. Creamy white. Crimson cheek.
- CARMAN. White.
- EARLY CRAWFORD. Golden yellow, blushed with red.
- ROCHESTER. Orange-yellow and deep dark red.

Mid-season varieties

- CHAMPION. Creamy white splashed with crimson.
- CROSBY. Orange-yellow and dull red.
- FITZGERALD. Golden yellow-red blush.
- J. H. HALE. Rich golden-yellow carmine cheek.

Late varieties

- ELBERTA. Orange-yellow overspread with red.
- LATE CRAWFORD. Yellow, blushed with red.

APRICOTS

2 YEAR OLD TREES 4-5 ft. tall (fresh dug).

Each	Per 10
1.00	9.00

- ACME. Yellow with red cheek.
- HARRIS. Yellow with red cheek.
- MOORPARK. Orange with orange-red cheek.

QUINCES

2 YEAR OLD TREES 3-5 ft. tall (fresh dug).

Each	Per 10
1.25	10.00

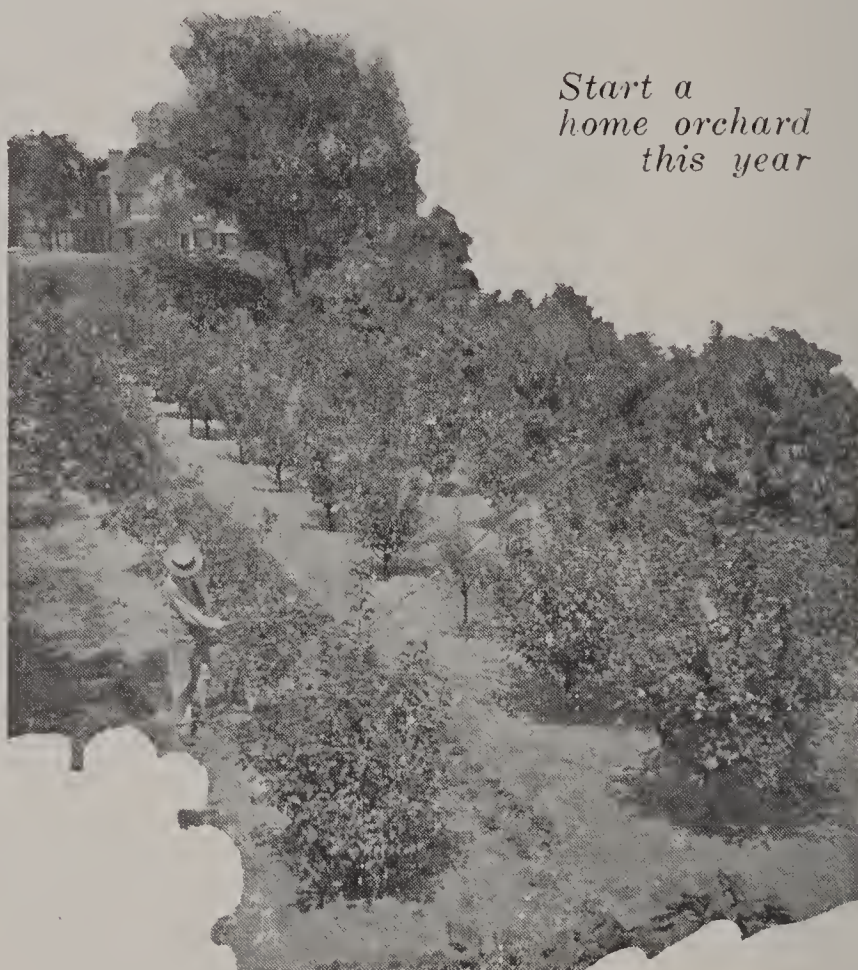
- ORANGE. Brilliant golden yellow.
- REA'S MAMMOTH. Bright yellow.

PRUNES

2 YEAR OLD TREES 5-7 ft. tall (fresh dug).

Each	Per 10
1.00	9.00

- FELLENBURG. (French) Purple.
- GERMAN PRUNE. Dark purple.



*Start a
home orchard
this year*

For those who want older and larger fruit trees plant our

SUPER-SIZE FRUIT TREES

TREES FULLY FOUR YEARS OLD—SEVEN TO NINE FEET TALL—BEAUTIFULLY ROOTED—HANDSOMELY BRANCHED

It takes work, time and money to produce them and we have spared neither. Inquiries for these older and larger trees are becoming more numerous each year. These inquiries make it evident that many people prefer older and larger trees for quicker results. Hence to supply this increasing demand, we are now growing a much larger stock of SUPER-SIZE TREES than formerly.

\$1.75 Each

\$16.50 per 10

\$160.00 per 100

VARIETIES OF SUPER-SIZE FRUIT TREES APPLES

BALDWIN. Large, deep red, crisp and juicy; vigorous grower; heavy bearer. November to March.

DELICIOUS. Ranks high as a variety for commercial or home orchards. Large, brilliant dark red; flesh fine-grained, crisp, juicy. Nov. to Feb.

FAMEUSE (SNOW). Medium size, bright red, flesh white, juicy. October.

GRAVENSTEIN. Large; yellow overlaid with red; juicy, productive. Sept. to Nov.

McINTOSH. Large; deep red flesh; crisp, tender, juicy. October to December.

NORTHERN SPY. Large, bright red, spread with delicate bloom; flesh tender, rich, delicious. November to March.

APPLES—4 years old—continued.

- RED ASTRACHAN. Large; deep crimson; juicy. August.
 RHODE ISLAND GREENING. Large greenish yellow; flesh tender. December to April.
 TWENTY-OUNCE. (Cayuga Red Streak). Very large; yellow splashed with red. October.
 WEALTHY. Medium to large; deep red, juicy. October to January.
 YELLOW TRANSPARENT. Medium size; pale yellow; good. July and August.

SWEET CHERRIES

- BLACK TARTARIAN. Very large; black, tender.
 DIKEMAN. Large; black.
 GOVERNOR WOOD. Large; light yellow, shaded and mottled with light red.
 LAMBERT. Very large; dark purplish red, turning to almost jet black when fully ripe.
 ROYAL ANN. Very large; pale yellow, spotted and shaded with deep red.

PEARS

- ANGOULEME. Large; greenish yellow, splashed with russet; a good bearer.
 ANJOU (Buerre d'Anjou). Large, handsome, greenish yellow, with a dull red cheek on the exposed side; flesh fine grained.
 BARTLETT. Large; waxen yellow with red blush, buttery, very juicy and high flavored.
 CLAPP'S FAVORITE. Very large; yellowish green to full yellow, rich.
 KIEFFER. Large; very handsome; rich yellow, tinged with red, excellent when canned.

PLUMS

- BRADSHAW. Very large; dark violet-red.
 BURBANK. Large nearly globular; clear cherry red, sweet, meaty and quite firm.
 GERMAN PRUNE. Large, oval, dark purple.
 LOMBARD. Medium size; violet-red.
 OCTOBER PURPLE. Large, round, purple.
 RED JUNE. Professor Bailey says: "By all odds the best Japanese Plum." Large, brilliant red.
 YELLOW GAGE. (Prince's Yellow Gage). Large, oval, golden yellow, slightly clouded; flesh deep yellow, rich, sugary, melting.

WHY THE TREES AND PLANTS FROM GLENWOOD NURSERY ARE OF SPECIAL IMPORTANCE TO YOU

1. **THEY ARE DEPENDABLE.** Every possible care is taken to have the stock that leaves this Nursery true to name and description.
2. **THEY ARE HEALTHY.** We take extraordinary precautions to keep all our trees and plants entirely free from disease.
3. **THEY ARE VIGOROUS.** Ample space has been given each tree or plant in the Nursery; where it has been necessary, we have pruned; we have fertilized; we have sprayed—to make our stock vigorous and sturdy.



RASPBERRIES

LARGEST SIZE PLANTS—GUARANTEED 2 YEARS OLD

**Prices except as otherwise noted:
\$1.00 per 10; \$7.50 per 100; \$60.00 per 1000**

Plant 4 ft. x 4 ft.

Varieties



- CHIEF.** Bright red, flesh firm, juicy, medium sweet. Quality high.
- COLUMBIAN.** Dark red, rich, juicy, of exceptional quality.
- CUMBERLAND.** Large black raspberry. Berries glossy, firm. Perfectly hardy. Very productive.

- CUTHBERT.** Deep rich crimson. Excellent quality. Vigorous.
- ERSKINE PARK (Everbearing Red Raspberry).** Pick berries all through the summer and autumn. Erskine Park commences to bear in July and continues to produce large luscious fruit until Fall.
- GOLDEN QUEEN.** Large beautiful amber color. Immensely productive and very hardy.
- HERBERT.** Extraordinarily large, oblong, rich and handsome. Very sweet and juicy.
- HONEYSWEET.** A distinctive black raspberry. Sweet and delicious. Fruits in July.
- LATHAM.** Yields twice as much as most other red raspberries. It is absolutely hardy. Due to its rich brilliant red color it sells readily on market stands.

Special Price

\$1.00 per 10 \$5.00 per 100 \$40.00 per 1000
NEW NEWBURGH. Bright red. Fruit large; very firm. Does not crumble.

THE PRICES quoted herein for trees and plants are fixed after careful, painstaking computation of the exact cost of production, and are made to fit the quality of "Glenwood Grown" stock and allow ourselves a fairly legitimate margin of profit. We are not controlled by the prices of other nurserymen which in many instances are the result of haphazard guess-work, and the goods must necessarily be of a quality to fit the price, for no one will continue to sell goods at a loss.

**WANT TO MAKE SOME MONEY?
PLANT**

LATHAM THE BIG RED RASPBERRY

SENSATIONAL IN YIELD AND PROFIT

5430 QTS. PER ACRE — \$1629.00 PER ACRE

The superior yielding ability of Latham is fairly represented by the following comparative figures. Reprinted from the Connecticut Agricultural College Review, September 1925. W. H. Darrow, Fruit Specialist:

Report on 3 year old Field: LATHAM 5430 qts. per acre. Herbert 3648 qts. per acre. Cuthbert 3600 qts. per acre. 5430 QTS. PER ACRE at 30c per qt., makes the neat return of \$1629.00 PER ACRE.

Latham is so good that we will pay \$1000. cash for the exclusive selling rights of any new raspberry that is superior to Latham in hardiness, bearing qualities, size and color.

FROM THE "GARDENER'S CHRONICLE"

Harold M. Bryant in Gardener's Chronicle.

"The Latham is without doubt the best red raspberry for the grower to plant today. It has proven entirely hardy in the Dakotas and the northwest. It is a splendid cropper, bearing fruit the largest and firmest I have seen of any variety and holding the size throughout a long picking season. It is a pleasure to pick berries of such size and of delectable appearance."

EASY TO GROW: Latham Raspberries can be easily grown in the home fruit garden and they require little care.

Set Plant 3 feet apart in rows 6 feet apart

FOR ONE ACRE ORDER 2420 PLANTS—Cost \$96.80

FOR ½ ACRE ORDER 1210 PLANTS—Cost 48.40

FOR ¼ ACRE ORDER 605 PLANTS—Cost 30.25

**A SOURCE OF PLEASURE AND ECONOMY FOR
HOME OWNERS**

Why pay 20c a pint for Raspberries at the stores when fresher berries can be so easily raised in your garden? Enjoy the pleasure and profit of growing your own.

Latham doesn't require expert attention. Our Mosaic-free plants are healthy and vigorous and produce abundantly.

They commence to bear soon, and continue for many years.

**STRONG HEALTHY TWO-YEAR-OLD PLANTS.
SPECIAL PRICE.**

\$1.00 per 10: \$5.00 per 100: \$40.00 per 1000



Washington Asparagus and Burbank's Rhubarb at Glenwood Nursery

BLACKBERRIES

LARGEST SIZE PLANTS—GUARANTEED 2 YEARS OLD

\$1.00 per 10; \$7.50 per 100; \$60.00 per 1000
Plant 5 ft. x 5 ft.

- BLOWERS. Extremely large, averaging 1 inch in diameter and 1¼-1½ inches long. Exceptionally sweet.
- EARLY HARVEST. Berries rather small. Very juicy, sweet and of excellent quality.
- MERSEREAU. Extra large; brilliant black. Rich and melting without core.
- SNYDER. Medium size; sweet and melting with no hard, sour core. Extremely hardy and enormously productive.

RHUBARB (Pie Plant)

	Each	Per 10	Per 100
2 Yr. roots25	2.00	15.00
EARLY SCARLET. Rather small, early and good.			
MYATT'S LINNAEUS. Early, tender with a mild, sub-acid flavor.			

CURRENTS AND GOOSEBERRIES

Fearing the introduction of the White Pine Blister Rust into their forests, a number of states prohibit the purchase of either Currants or Gooseberries from out of State Nurseries, as there is a possibility of their plants becoming affected and spreading the disease. We have therefore, discontinued the sale and shipping of them.



Strawberries picked in October. The Mastodon Everbearer.

STRAWBERRIES

Extra Fine Field Grown Plants

\$1.50 per 100

\$12.50 per 1000

(Plant 1 ft. apart in rows 3 ft. apart)

BEACON. The best early variety in existence. Very productive. Large, glossy, red, firm and refreshing.

BLISS. Berry of supreme quality. Fragrant, high flavored; glossy, red, large, very productive.

BOUQUET. Big plant, berry and crop. Glossy, red, firm, delicious. Ships long distances.

GLEN MARY. Large, sometimes flattened; light red, sweet and rich, very productive.

JUMBO. A mammoth plant and a whale of a berry. It's a good one.

MARSHALL. Large, handsome, dark crimson; flesh firm, rich, moderately productive.

McKINLEY. Large, handsome; of excellent quality. Productive.

SUNSET. Strong growing plants. Berries deep red. Excellent either fresh or cooked.

TABLE QUEEN. A big producer of large, bright red berries, delicious and pleasing. A good canner.

THE MASTODON EVERBEARING STRAWBERRY.

The giant Mastodon and king of all everbearing Strawberries. Harvest a crop three months after setting the plants and continue to pick the berries until frost comes.

Strong Field Grown Plants:

\$2.50 per 100;

20.00 per 1000



ASPARAGUS

SPECIALLY SELECTED 2 YEAR CROWNS

\$2.00 per 100

\$17.50 per 1000

CONOVER'S COLOSSAL. Large size, remarkably tender and high flavored. Vigorous grower, sending up from fifteen to twenty sprouts each year from one to two inches in diameter. Color deep green and crown very close. Can be cut one year sooner than the other varieties.

MARY WASHINGTON ASPARAGUS, is the first result of a blister proof campaign for the eradication of asparagus rust and is as far as possible an extremely resistant, vigorous and high yielding strain of giant asparagus.

PALMETTO. An extra early variety, tender and of good flavor. Productive.

EXTRA SPECIAL

Extra Large—fully 3 year old Asparagus roots

PEDIGREED ASPARAGUS—MARY WASHINGTON

MAMMOTH 3-YEAR-OLD ROOTS

The great Mary Washington developed by the United States Department of Agriculture is in our opinion the best strain of Asparagus known. Our seed came from the Pedigreed Seed Company. Planted in the Spring of 1933. The roots have now had three summers' growth. They are very large and produced stalks sufficiently large enough for cutting last year, in fact our employees supplied their own tables from these plants for a number of weeks. Two years ago we sold these extra old, extra large plants at \$7.00 per 100. As we want to use this particular piece of land for new planting we decided to dispose of this entire lot of plants. Spring or Fall is an excellent time to prepare an Asparagus bed and by planting this Spring you gain a year.

\$5.00 per 100

\$45.00 per 1000

(No order accepted for less than 100 plants at this price).



We grow grapes by the mile at Glenwood Nursery

GRAPES

FINE TWO YEAR OLD PLANTS

Each	Per 10	Per 100
.25	2.25	20.00

BLACK GRAPES

- CAMPBELL'S EARLY. Bunches thick. Large round berries. Sweet profuse bearer. Hardy. Very early.
- CONCORD. Bunches large and compact. Berries large; Pulp juicy and sweet; Vine very hardy and equally productive.
- IVES. Bunch extremely large, compact, handsome. Berry large, tender, juicy, rich, sweet without pulp. Hardy.
- McPIKE. Bunches large and compact. Pulp tender and juicy.
- MOORE. Bunches large, berries large, round, black with a heavy blue bloom. Vine very hardy withstanding temperatures of 20 degrees below zero. Maturing 20 days before Concord.
- WORDEN. Bunches large and handsome. Vine healthy and hardy. A seedling of Concord, ripening a few days earlier.

RED GRAPES

- BRIGHTON. Bunches large, compact. Berries rich wine-red. Pulp tender, almost seedless. A superior variety.
- CATAWBA. Bunches large; berries large of a coppery red color. Pulp juicy, sweet. Very productive. An excellent table and wine grape.
- CATAWBA—CONCORD. Berry sparkling light red; pulp tender, juicy, sweet.
- DELAWARE. Bunches small, compact, berries rather small, round, light red, pulp juicy. Profuse bearer.
- JEFFERSON. Bunches large; berries bright red, medium to large. Fine market grape.
- LUCILLE. Bunches very large and compact. Berries large, pulp sweet. Vine hardy, healthy and bears tremendous crops.

WHITE GRAPES

- DIAMOND. Bunches large, handsome, compact. Berries large, delicate greenish white with rich yellow tinge when fully ripe. Pulp tender with few seeds. Ripens a few days before Concord.
- GREEN MOUNTAIN. Bunches long, compact; berries oval, greenish white. Pulp tender, juicy, sweet and rich. Very productive.
- NIAGARA. Bunches large, uniform and compact. Pulp melting, sweet. Vine strong grower and very hardy. An excellent grape for either home or market garden.



For Those Who Prefer
EXTRA LARGE 3 YEAR OLD GRAPE VINES

BIGGER — BETTER — OLDER GRAPE VINES

and as fine and as popular a list of varieties as you will
 find in the East

Each	Per 10	Per 100
.50	4.50	40.00

Varieties

AGAWAM. Red or copper color. Meaty, juicy of a rich peculiar aromatic flavor. One of the best. Season about the same as Concord.

BRIGHTON. Flesh tender, whitish, sweet with scarcely any pulp. Separates readily from the seeds. Very choice as a table grape.

CATAWBA. Dark red of finest flavor. Best quality for both table and wine.

CONCORD. Leading commerical grape of America. Black, early, tender, juicy, sweet. The Concord makes a light red wine which is very palatable.

DELAWARE. Berries small. Juicy, very sweet. The very best quality for both table and wine and the flavor and quality is unsurpassed.

LINDLEY. A red grape of the best quality. Tender and sweet and high aromatic flavor.

NIAGARA. White. Bunches very large and handsome, melting, sweet with a flavor and aroma peculiar of its own.

WYOMING. Sweet, early, coppery red. A wonderful grape for both the garden and the vineyardist.

Eight varieties that will suit every taste. Planted this Spring should fruit next Fall.

LITTLE SPECIALLY SELECTED COLLECTED TREES FOR REFORESTRATION

ACER RUBRUM,

	Size	100 rate	1,000 rate
Red Maple	1-2'	\$ 3.00	\$ 25 00
Red Maple	2-3'	5.00	40.00
Red Maple	3-4'	8.00	70.00

ACER SACCHARUM

Sugar Maple	2-3'	5.00	40.00
Sugar Maple	3-4'	6.00	50.00

BETULA LENTA

Black Birch	1-2'	3.00	25.00
Black Birch	2-3'	5.00	40.00
Black Birch	3-4'	8.00	70.00

BETULA NIGRA

River Birch	2-3'	7.00	65.00
River Birch	3-4'	8.00	75.00

CORNUS FLORIDA

White Flowering Dogwood	1-2'	5.00	40.00
White Flowering Dogwood	2-3'	7.00	65.00
White Flowering Dogwood	3-4'	10 00	90.00

FAGUS AMERICANA

American Beech	1-2'	3.00	25.00
American Beech	2-3'	5.00	40.00
American Beech	3-4'	8.00	70.00

HICKORY LACINOSA

Shell Bark	1-2'	10.00	90.00
Shell Bark	2-3'	12.00	105.00

BLACK WALNUT	18-24"	6.00	50.00
--------------------	--------	------	-------

PLATANUS OCCIDENTALIS

Oriental Plane	3-4'	8 00	
----------------------	------	------	--

QUERCUS ALBA

White Oak	1-2'	7.00	65.00
White Oak	2-3'	10.00	90.00

QUERCUS VELUTINA

Black Oak	1-2'	7.00	65 00
Black Oak	2-3'	10.00	90.00

QUERCUS RUBRA

Red Oak	1-2'	7.00	65.00
Red Oak	2-3'	10 00	90.00

ULMUS AMERICANA

American Elm	1-2'	3.00	25.00
American Elm	2-3'	5.00	40.00
American Elm	3-4'	8.00	70.00

Let Our Landscape Department Solve Your Planting Problems for You

Ever notice the difference in attitude toward furnishing the INSIDE of the house—and furnishing the OUTSIDE? It's a curious study in psychology—the working of the mind.

FOR INSTANCE—The house cost \$8,000—lot cost \$2,500—Total \$10,500.

INSIDE, owner spends—

Living Rooms—Rugs, chairs, davenport, books, etc.	\$ 600.00
Piano, Victrola or Radio, pictures, curtains, etc.	1,000.00
Three Bedrooms—Furniture, bedding, rugs, etc., each \$300	900.00
Dining Room—Table, chairs, linen silver, china, etc.	300.00
Kitchen—Range, crockery, utensils, laundry, etc.	200.00

Total—a moderate estimate for a
modern home\$3,000.00

Nothing unusual, nothing remarkable, nothing to get excited about.

OUTSIDE, owner invests—(too often)—

Lawn—scratched in—seeds and labor.....	\$ 75.00
Geraniums—from the neighbors	Free
Roses and perennials	15.00
Shade Trees	12.00
Fruit Trees	6.00
Flowering Shrubs and Porch Vines	11.00
Miscellaneous small plants—(perhaps).....	6.00

Total—(and he thinks it a good job).....\$ 125.00

Nothing unusual, nothing remarkable—except that it doesn't look as cheap as it really is.

Indoors, \$3,000—Outdoors, \$125. Is that justice to the home?

SUPPOSE—The owner would ask our Landscape Dept. to change his property into a Picture. Change his house into a Home. We might ask \$100 to \$1,000 for the job—and right here the average man goes clear up in the air; but—

Let's See—THE CONTRAST five years later. Business makes it necessary to move. He sells out.

The Household Goods—if he is lucky—sell for \$1,000. Loss \$2,000.

The House and Grounds—beautifully planted—sell for \$14,000. Gain \$3,500.

HERE IS OUR POINT

Indoor Furnishings are Expense—wear out, never return outlay.

Outdoor Furnishings are Investment—increase in value yearly.



**GLEN BROTHERS, INC.
GLENWOOD NURSERY**

Established 1866

1762-1772 MAIN ST.

ROCHESTER, N. Y.