

Historic, archived document

Do not assume content reflects current scientific knowledge, policies, or practices.

Flower Planting Guide

for Florida

1939-40



IMPERIAL MIXTURE ASTERS
(SEE PAGE 9)

CROWN OF GOLD MARIGOLDS
(SEE PAGE 14)

HELICHRYSUM OR STRAWFLOWERS
(SEE PAGE 12)

THE KILGORE SEED COMPANY
GENERAL OFFICES & MAIL ORDER DEPARTMENT
PLANT CITY, FLORIDA

Important Directions to Customers

**"Prompt Service" Is a Kilgore Motto Which Has Been in Practice for
Over Twenty-five Years**

How to Order

Please be careful to sign your name, box number, street or rural route, post office and State on every order. *Please write plainly.*

Cash With Order

Ours is a cash business and our prices are made on that basis. Customers are requested to remit when ordering and by so doing save the C.O.D. fee charged by postal authorities for collecting and returning money.

C. O. D.

Perishable items such as rose bushes, nursery stock, etc., are not sent C.O.D. under any circumstances.

How to Send Money

Remittances should be made by post office money orders, express money orders, drafts or checks.

Remittance by Stamps

On orders for seeds where the amount is 50 cents or less, we will accept stamps in good condition the same as cash, but we would ask those remitting stamps to wrap them in oiled paper to prevent their sticking together or to the order.

Export Shipments to Cuba, the West Indies, and Foreign Countries

For the convenience of our customers in the West Indies we have established the following agencies: M. J. Diaz y Cia, Muralla 75, Havana, Cuba; Mr. A. C. Kopf, Nueva Gerona, Isle of Pines; Mr. F. C. Albury, Nassau, Bahamas; Nitrate Agencies Company, P. O. Box 1413, San Juan, Puerto Rico; Mr. Benigno Perez Martinez, P. O. Box 216, Luperon No. 9, Ciudad Trujillo, Dominican Republic; Mr. Leslie R. Mordecai, 158 Harbour St., Kingston, Jamaica; Mr. Jean Comhaire, Port au Prince, Haiti. These agents carry a full line of Kilgore's seeds during the season.

Non-Warranty

We give no warranty, express or implied, as to description, quality, productiveness, or any other matter of any seeds, bulbs or plants we sell, and we will not be responsible for the crop.

No reputable Seedsman gives any warranty. We test our seeds for germination and trueness to type before we send them to our customers. We have the fullest confidence in the quality of all the seeds we sell, but we have no control over them after they leave our hands. Satisfactory germination and production are dependent upon many factors other than the quality of the seed, such as methods of planting, cultivation, and fertilizing. If we should warrant or guarantee seeds in any way, we could be held responsible for the failure of the crop, regardless of cause; a responsibility we cannot accept.

No Seeds Returned

For your protection we will not permit seeds to be returned, unless mistake was made in filling order. No customer would want to plant seeds that had been returned, nor would we feel safe in filling an order with returned seed. This is one reason we have never followed the policy of putting out our seeds with dealers. Our seeds are never out of our hands until they are sold to you direct through our mail-order department or through one of our own stores or agencies.

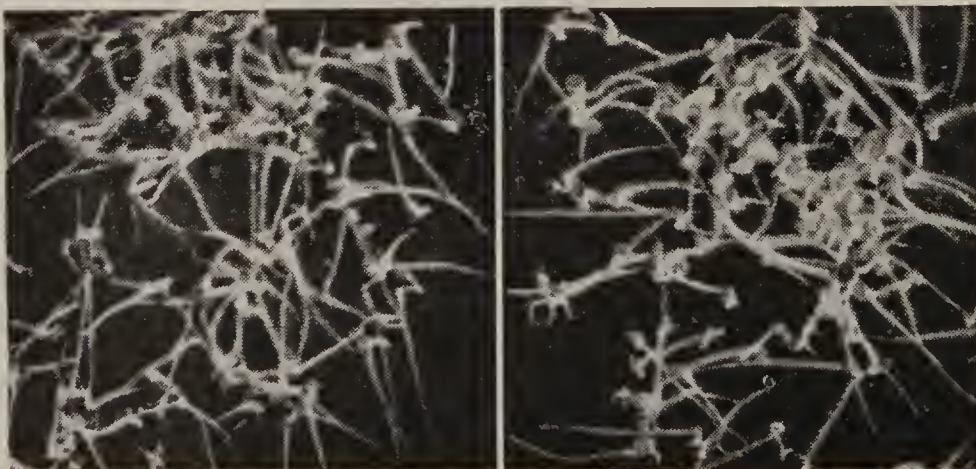
High vitality seed must be planted to secure a good stand

We have one of the most elaborate and up-to-date seed testing laboratories where samples of all our seed stocks are tested at regular intervals to insure our customers against planting low vitality seeds.



A close up view of one of our seed testers. In these testing machines germination tests are made in the laboratory under ideal conditions. We make corresponding tests in the soil so that we know at all times the correct germination of all seed stocks we have on hand. Seed stocks that are found to be falling in germination, and will soon be too low to give a good stand, are immediately removed from our warehouse and distributing plants and are destroyed.

In our seed testing laboratory, a sample of every stock of flower seed we sell is tested at frequent intervals in a germinating apparatus, and the number of seeds which germinate out of 100 seeds tested is recorded. A similar sample of each stock is also planted in test plots, giving us a double check on the vitality of all Kilgore seeds and enabling us to check on uniformity, trueness to type, freedom from mixture, and adaptability. Any Kilgore seed stocks which are not up to standard are discarded. In this way, Florida growers are provided with the proper kinds of flower seeds for Florida conditions because the seeds are tested and proven under these conditions.



Different kinds of flower seeds taken from our seed testers, showing sprouts indicating strong vitality. Such seeds will give a good stand when planted in the garden.

FLOWERS FOR SPECIAL USES

Recommended for cuttings or bouquets

Ageratum	Cosmos	Queen Anne's Lace
Arctotis Daisy	Cynoglossum	Salvia
Aster	Daisy—Shasta	Scabiosa
Blue Lace Flower	Dianthus	Snapdragon
Baby's Breath	Gaillardia	Statice
Bachelor's Button	Larkspur	Strawflower
Calendula	Lupin	Sunflower
Calliopsis	Marigold	Sweet Pea
Candytuft	Nasturtium	Tithonia
Carnation	Pansy	Zinnia
	Pyrethrum	

Recommended for bedding

Ageratum	Dianthus	Pyrethrum
Arctotis Daisy	Cynoglossum	Scabiosa
Aster	Gaillardia	Snapdragon
Blue Lace Flower	Larkspur	Salvia
Calendula	Lupin	Statice
Shasta Daisy	Nasturtium	Vinca
Calliopsis	Pansy	Zinnia-Pompon, Mexicana
	Poppy	

Recommended for edgings or borders

Ageratum	Daisy—Dahlborg	Poppy—California
Alyssum	Dianthus	Portulaca
Balsam	Globe Amaranth	Salvia
Blue Lace Flower	Marigold—Harmony	Snapdragons—Half-tall
Bachelor's Button	Pansy	Verbena
Candytuft	Petunia—Dwarf Type	Vinca
Cuphea—Firefly	Phlox	Zinnia—Mexicana

Recommended for porch and window boxes

Ageratum (dwarf)	Daisy—Dahlborg	Phlox
Alyssum	Dianthus	Portulaca
Balsam	Marigold—Dwarf	Salvia
Carnation	Nasturtium	Verbena
Cuphea—Firefly	Pansy	Zinnia-Pompon, Mexicana
	Petunia—Dwarf	

These succeed in partial shade

Ageratum	Daisy—Shasta	Pansy
Alyssum	Dianthus	Phlox
Aster	Larkspur	Snapdragon
Arctotis Daisy	Lupin	Verbena
Balsam	Nasturtium	Vinca

These make good backgrounds

Arctotis	Cosmos	Sunflower
Bachelor's Button	Helichrysum	Tall Marigold
Blue Lace Flower	Larkspur	Tithonia
Calliopsis	Lupin	Zinnia
	Queen Anne's Lace	

These make good heavy vines for shade and blossoms or fruits for ornament

Bean—Scarlet Runner	Gourd—Ornamental
Cypress Vine	Morning Glory (Improved Ipomea)

These volunteer readily after once planted

Ageratum	Cosmos	Phlox
Arctotis	Dianthus	Portulaca
Alyssum	Larkspur	Tithonia
California Poppy	Periwinkle	Vinca
Calliopsis	Petunia	Zinnia

Annals for use in the Rock Garden see page 24.

Kilgore's Flower Planting Calendar for Florida

What to Plant ≡ ≡ ≡ When and How

<i>Kind of Flower</i>	<i>Tender or Hardy</i>	<i>When to Plant</i>	<i>Approximate Time Sowing to Bloom</i>	<i>Remarks</i>
AGERATUM OR FLOSS FLOWER	T	September thru March	2½ Months	Grows in relatively poor soil. Excellent for bedding, edgings and for cutting. Sow in flats. (See page 8).
ARCTOTIS OR BLUE-EYED AFRICAN DAISY	H	September thru January	3 to 4 Months	Must have sunny location. Dampness produces mildew. Fine for cutting as well as for garden display. Volunteers readily. Sow in open. (See page 8).
ALYSSUM	H	September thru January	1½ Months	A most desirable winter edging plant. Bloom does not last long but cutting back brings new flowers. Sow in flats or open. (See page 8).
ASTER	H	September thru March	3 to 4 Months	Non-wilt varieties are best. All Kilgore's Asters are composed of wilt-resistant varieties. Single Giants of California make ideal cut flowers. Sow in flats. (See page 9).
BALSAM DOUBLE CAMELLIA-FLOWERED	T	September thru March	1½ Months	Grows in very poor soil. Bloom lasts eight weeks. Reproduces from self-sown seed. Sow in flats. (See page 9).
BLUE LACE FLOWER OR DIDISCUS	H	September thru January	2 to 3 Months	Fine for borders and bedding, and especially good for cut flowers. Sow in flats. (See page 9).
BACHELOR'S BUTTON OR CENTAUREA	H	September thru January	3 Months	Easily grown, flowers of many colors. Blooms freely. Must have plenty of sun. Fine for borders. Sow in open. (See page 9).
BABY'S BREATH OR GYPSOPHILA	H	September thru January	2 to 2½ Months	Does best in rich soil and semi-shade. Used extensively to mix with other cut flowers in bouquets. Sow in open. (See page 10).
BEAN—SCARLET RUNNER	T	February thru May	1½ Months	Useful principally as an ornamental climber to furnish shade and clusters of attractive bright scarlet flowers. Sow in open. (See page 10.)
CANDYTUFT	H	September thru February	2 to 3 Months	Does best in cool weather. Fine for flower beds, edging walks and borders and cutting. Sow in open. (See page 10).
CALENDULA	H	September thru January	3 to 3½ Months	One of the finest winter flowers. It is very hardy. Bloom lasts two months by cutting back. Makes a showy garden display. Sow in open. (See page 10).

Kilgore's Flower Planting Calendar for Florida

What to Plant ≡ ≡ ≡ When and How

<i>Kind of Flower</i>	<i>Tender or Hardy</i>	<i>When to Plant</i>	<i>Approximate Time Sowing to Bloom</i>	<i>Remarks</i>
CALLIOPSIS	H	September thru February	4 Months	Requires very little care. Much like single Cosmos, plant being bushy and wiry. Sunny location best. Sow in open. (See page 10).
CARNATION	H	September thru December	3 to 4 Months	Does best when given full exposure to morning sun, but protected from hot afternoon sun. Flowers are very fragrant. Sow in flats. (See page 11).
COSMOS	T	March thru May	2½ to 3 Months	Very easy to raise. Usually re-seeds. Makes handsome background for lower growing flowers. Sow in open. (See page 11).
CUPHEA— FIREFLY	H	January thru March	3 to 3½ Months	Dwarf, compact plant, covered with fiery red flowers. Desirable for rockery, window boxes and edging. Sow in open. (See page 11).
CYNOGLOSSUM OR CHINESE FORGET-ME-NOT	H	September thru March	2 to 3 Months	Fine for bedding or when used with other flowers for cutting. Sow in open. (See page 11).
CYPRESS VINE	T	March thru May	2 Months	Very graceful vine with profusion of star-shaped flowers. Sow in open. (See page 11).
DAISY— DAHLBORG	H	September thru January	3 Months	Very desirable plant for winter edgings and for bordering flower beds. Sow in open. (See page 11).
DAISY— SHASTA and PAINTED	H	September thru January	4 Months	Very hardy. Needs plenty of water. Splendid for bedding, and a marvelous cut flower. Sow in open. (See pages 11 and 12).
DIANTHUS OR CHINESE PINKS	H	September thru January	2½ to 3 Months	Can be planted from cuttings. Useful for borders and cut flowers. Sow in open. (See page 12).
GAILLARDIA OR BLANKET FLOWER	H	Any Time	2 to 3 Months	Very easily grown. Must have plenty of full sunlight. Desirable for cutting. Sow in open. (See page 12).
GLOBE AMARANTH	T	February thru July	3 Months	A showy everlasting flower with clover-like heads. Valuable for edgings. Sow in flats. (See page 12).
GOURDS— ORNAMENTAL	T	February thru May	4 Months to Fruit	Useful for shading, also for ornamental fruits which have many uses. Sow in open. (See page 12).
HELICHRYSUM OR STRAWFLOWER	T	September thru March	2 to 2½ Months	Useful for decorative purposes. Will keep indefinitely if properly dried. Sow in open. (See page 12).
HELIANTHUS OR ORNAMENTAL SUNFLOWER	T	February thru August	1½ to 2 Months	Grows fast in nearly all kinds of soil, but is especially suited to muck land or low land with plenty of water. Sow in open. (See page 13).

Kilgore's Flower Planting Calendar for Florida

What to Plant



When and How

<i>Kind of Flower</i>	<i>Tender or Hardy</i>	<i>When to Plant</i>	<i>Approximate Time Sowing to Bloom</i>	<i>Remarks</i>
LARKSPUR	H	November thru January	2½ to 3 Months	Volunteers readily. Colors in semi-shade are richer and deeper than in full sunlight. Sow in open after cool weather has started. (See page 13).
LUPIN	H	September thru December	2 to 2½ Months	Not a heavy feeder. Will grow in comparatively poor soil. Requires abundance of water during the blooming season. Sow in open. (See page 13).
MORNING GLORY OR IMPROVED IPOMEA	T	March thru June	2 Months	A beautiful rapid climber with glorious large sky-blue flowers, 4 inches across. Sow in open. (See page 13.)
MARIGOLD	T	February thru May and again in September	1½ to 2 Months	Bloom lasts 2½ months. Fine for borders or cut flowers. Gigantea Sunset Giants best for cutting. Will grow in practically any soil. Many new sorts have recently been developed. Sow in open. (See page 14).
NASTURTIUM	T	September thru March	2 to 3 Months	The new double dwarfs are most popular. They produce an immense number of sweetly scented flowers with long stems, ideal for cutting. Do very well in well drained locations and do not require a rich soil. Sow in open. (See page 15.)
PANSY	H	September thru December	2½ to 3 Months	Probably our best winter edging plant. Does best in full sun and must have plenty of water. Good drainage is essential. Makes charming cut flowers. Sow in flats after cool weather has started. (See page 15).
PHLOX DRUMMONDI	H	September thru February	2½ to 3 Months	Grows in relatively poor soil. Likes plenty of water and sunshine. Bloom lasts about 6 to 8 weeks. Will reproduce from self-sown seed. Excellent for planting in barren unsightly places. Sow in open. (See page 15).
POPPY— CALIFORNIA	H	September thru January	2½ to 3 Months	Likes a fairly dry soil. Sow seed early, where plants are to bloom because they will not stand transplanting easily. Volunteers from self-sown seeds. Sow in open. (See page 15).
PETUNIA	H	September thru June	2½ to 3 Months	One of Florida's outstanding annuals. Grows in any moderately rich, well drained, moist soil. Can be grown throughout the summer and single kinds stand considerable cold. Useful for bedding and for roadside beautification. Sow in flats. (See page 16).

Kilgore's Flower Planting Calendar for Florida

What to Plant

When and How

<i>Kind of Flower</i>	<i>Tender or Hardy</i>	<i>When to Plant</i>	<i>Approximate Time Sowing to Bloom</i>	<i>Remarks</i>
PORTULACA OR SUN PLANT	T	February thru August	1½ Months	Thrives in sunny locations. Excellent for massing, edging, rock-work, and sowing broadcast in open ground. A creeping, succulent plant with brilliant flowers. Sow in open. (See page 17).
QUEEN ANNE'S LACE	H	September thru January	2 to 3 Months	Produces large heads of tiny white flowers on long stems. Useful for mixing with other cut flowers giving an airy appearance. Sow in open. (See p. 17).
SALVIA OR SCARLET SAGE	H	September thru June	3 to 4 Months	Very showy flowers. Desirable for low hedges, bedding, and cutting. In good soil, bloom will last four months. May be grown from cuttings. Sow in flats. (See page 17).
SCABIOSA OR MOURNING BRIDE	H	September thru December	5 Months	Very showy flowers. Long stems. Unsurpassed as cut flowers; if cut before entirely open they will last a week or longer. Sow in open. (See page 17).
SNAPDRAGON OR ANTIRRHINUM	H	September thru December	3 to 4 Months	Requires only medium soil. Grows 18 in. to 3 ft., depending on variety. Seeds small and slow to germinate. Sow in flats; protect from ants. (See page 17).
SWEET PEA	H	September thru December	2½ to 3 Months	Heavy feeders and must have rich soil. Desirable to plant in trench enriched to 18 in. to 2 ft. deep. Rows should run north and south. Keep flowers cut every day; do not let seed develop. Sow in open. (See page 18).
STATICE	H	September thru January	3 Months	Very easily grown. Stands some salt spray. Valued for drying and makes an excellent everlasting flower for winter bouquets. Sow in open. (See page 18).
TITHONIA OR FLORIDA SUNFLOWER	T	February thru June	3 Months	Must have plenty of sun. Easy to grow. Fine for cutting, handsome planted in shrubbery bays. Sow in open. (See page 18).
VERBENA	H	Any Time	3 Months	Bloom lasts three months. Trailing graceful plants. Good for edgings or window boxes. Sow in open. (See page 18).
VINCA OR PERIWINKLE	T	Any Time	3 Months	Will grow in poor soils. Fine for borders, bedding and massing. Reseeds itself. Sow in open. (See page 18).
ZINNIA	T	February thru August	1½ Months	Best summer flower for Florida. Pompon best for bedding. Giants ideal for cutting. Requires rich soil and plenty of water in blooming time. Sow in flats or open. (See page 19).

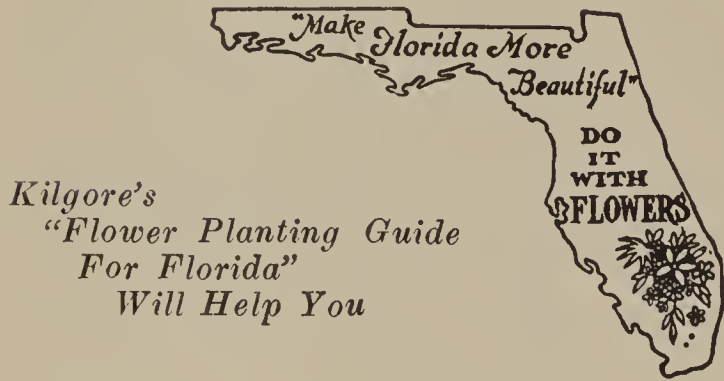
Flower Seeds for Florida and the West Indies

ALL FLOWER SEED PRICES QUOTED ARE POSTPAID.

In the following pages we list and describe 46 kinds of annual flowers which we recommend for Florida as a result of many years of experimental work and testing under Florida growing conditions. We have found these 46 kinds to be the best adapted to Florida climatic conditions. For your convenience, you will find the flowers listed alphabetically in

the same order in which they are listed in the "Planting Calendar" on pages 4 through 7.

If interested in any straight colors, not listed, or if interested in lilies and bulbs, which are not listed, write direct to our West Palm Beach store, 910 Belvedere Road, stating your desires and ask us to quote you prices.



Ageratum

OR FLOSS FLOWER

Plant from September thru March

Approx. time seed sowing to bloom—2½ mos.

Popularly known as the Floss flower, it is a favorite for edgings and bedding. Grows rapidly and is a free and constant bloomer. Very desirable for cutting.

KILGORE'S TALL PURPLE PERFECTION.

Compact plant growing to a height of about 18 to 24 inches, covered with dark amethyst colored flowers. Desirable for cutting.

Pkt. 10c; 3 pkts. 25c; ½ oz. 35c;
1 oz. 60c; ¼ lb. \$2.00.

KILGORE'S DWARF BLUE CAP IMPROVED.

This strain is very dwarf, growing to a height of about six inches. Compact habit, small foliage, and symmetrical dome-like form. The color is a deep, rich, bright blue-lavender.

Pkt. 10c; 3 pkts. 25c; ⅛ oz. 50c;
¼ oz. 75c; ½ oz. \$1.35; 1 oz. \$2.50.

African Daisy

Arctotis grandis

Plant from September thru January

Approx. time seed sowing to bloom—3-4 mos.

A charming flower for cutting as well as garden display. Plants grow 2 to 3 feet tall and produce many branches with long-stemmed, pure white, daisy-shaped flowers having a blue center and pale lilac-blue shading on the reverse of the petals. It is very effective made up in bouquets with Lupins and Baby's Breath. Reseeds readily.

Pkt. 10c; 3 pkts. 25c; ½ oz. 30c;
1 oz. 50c; ¼ lb. \$1.50.

Alyssum

Plant from September thru January

Approx. time seed sowing to bloom—1½ mos.

One of the most desirable border or edging plants, growing 6 to 8 inches high and literally covered with tiny flowers which form a compact, showy carpet lasting for months during the winter season if cut back occasionally.

KILGORE'S WHITE GEM. Small white flowers completely cover the dwarf, compact plants, which grow to a height of about six to eight inches. Wonderful for edgings.

KILGORE'S LILAC QUEEN IMPROVED. Free blooming, beautiful deep purple flowers, completely cover the dwarf plants which grow about six inches high. Valuable alone or combined with Kilgore's White Gem for edgings.

Prices on each of the above:

Pkt. 10c; 3 pkts. 25c; ½ oz. 30c;
1 oz. 50c; ¼ lb. \$1.50.



African Daisy—*Arctotis Grandis*
A Charming Cut-flower

Aster

Plant from September thru January

Approx. time seed sowing to bloom—3-4 mos.



Plant of Wilt Resistant Crego Aster

Popular flowers which in the best varieties resemble chrysanthemums. Our selection comprises only the finest types of Fusarium Wilt resistant varieties suited to Florida conditions. Plants grow 2 to 3 feet tall.

CREGO ASTER. (wilt resistant). This class, also called "Ostrich Plume" and "Giant Comet," blooms a few days after the Imperial variety. The double flowers are of fine size, have long, shaggy, twisted petals and are borne abundantly on branching plants of robust growth.

Assorted Colors.

Pkt. 10c; 3 pkts. 25c; 1/4 oz. 35c;

1/2 oz. 60c; 1 oz. \$1.00; 1/4 lb. \$3.00.

KILGORE'S IMPERIAL ASTER MIXTURE. (wilt resistant). A blending of many of the very best colors of Early Beauty Asters. Where a mixture is desired this will give extremely satisfactory results.

Pkt. 10c; 3 pkts. 25c; 1/4 oz. 50c;

1/2 oz. 75c; 1 oz. \$1.25; 1/4 lb. \$3.50.

SINGLE GIANTS OF CALIFORNIA. (Marguerite) (wilt resistant). This is a new type of Aster. Plants are tall, sturdy growers, and produce large, single flowers in a large range of colors on long stiff stems. An ideal cut flower, because of its long keeping qualities.

Single Marguerite Mixture.

Pkt. 10c; 3 pkts. 25c; 1/2 oz. 35c;

1 oz. 60c; 1/4 lb. \$2.00.

Balsam

Double Camellia-flowered

Plant from September thru March

Approx. time seed sowing to bloom—1 1/2 mos.

A well-known old garden favorite with large, double, gorgeously colored flowers borne in the axils of the leaves, making a most attractive garden display. They are very easy to grow and transplant without difficulty. Set them 18 inches apart, in a shady spot.

KILGORE'S DOUBLE SELECTED MIXTURE.

Pkt. 10c; 3 pkts. 25c; 1/2 oz. 30c;

1 oz. 50c; 1/4 lb. \$1.50.

Blue Lace Flower

Didiscus

Plant from September thru January

Approx. time seed sowing to bloom—2-3 mos.

A delightful blue annual, growing quickly from seed, producing long-stemmed, clustered heads like a magnificent pure blue Queen Anne's Lace. Very fine for bedding and especially charming when cut. Has achieved wide popularity throughout the entire United States. Like the Baby's Breath, it is also grown in large quantities by florists who find it profitable as a market flower. There are no special cultural requirements.

KILGORE'S HEAVENLY BLUE. Pkt. 10c; 3

pkts. 25c; 1/4 oz. 35c; 1/2 oz. 60c; 1 oz.

\$1.00; 1/4 lb. \$3.00.

Bachelor's Button

Centaurea

Plant from September thru January

Approx. time seed sowing to bloom—3 mos.

The Bachelor's Button, or Cornflower, is very easily grown. The blue variety is the one most prized and is one of the clearest and finest blues found in the flower kingdom. Our Bachelor's Buttons comprise only the double varieties which are much superior to the single types.

KILGORE'S SKY BLUE. One of the most beautiful and deepest blues in the flower kingdom.

KILGORE'S DAINTY MIXTURE Composed of white, delicate pink, lavender and blue flowers.

Prices on each of the above:

Pkt. 10c; 3 pkts. 25c; 1/2 oz. 35c;

1 oz. 60c; 1/4 lb. \$2.00.

Florida Bachelor's Button OR GLOBE AMARANTH. (*Gomphrena*)

(See page 12.)

Baby's Breath

Gypsophila grandiflora

Plant from September thru January

Approx. time seed sowing to bloom—
2-2½ mos.

Baby's Breath is one of the necessities in every garden where flowers are raised for cutting. It grows rapidly and produces sprays of dainty flowers in white and pink, and is used extensively for mixing with other cut-flowers of heavier and denser appearance. Florists grow it in large quantities for that purpose.

KILGORE'S PURE WHITE.

KILGORE'S DEEP PINK.

Each of the above: Pkt. 10c; 3 pkts. 25c;
½ oz. 30c; 1 oz. 50c; ¼ lb. \$1.50.

Bean - Scarlet Runner

Plant from February thru May

Approx. time seed sowing to bloom—1½ mos.

Plants grow quickly to a height of 8 to 10 feet, making strong, bushy plants for shade. The plants bear large, showy sprays of attractive bright scarlet flowers. Although grown principally as an ornamental climber, it is also valuable for the beans to eat like string beans when young, or lima beans when older.

Pkt. 10c; ¼ lb. 25c; 1 lb. 75c.

Candytuft

Plant from September thru January

Approx. time seed sowing to bloom—2-3 mos.

Charming clustered heads of daintily colored flowers. Nice for cutting but particularly desirable for edging walks and flower-beds. Grows to 12 inches high and blooms during autumn, winter, and spring, preferring the cooler weather. It can be transplanted, but is better if sown where it is to bloom and thinned out to 12 inches apart.

MINIATURE GEM. A dainty miniature variety, 3½ inches in height, each plant producing from four to six spikes of pure white flowers. A perfect gem for the rock garden and for edging.

KILGORE'S WHITE HYACINTH-FLOWERED. This is an extra select strain, the largest and best Hyacinth-flowered type. Plant is of sturdy, compact habit of growth, 18 to 24 inches high, with huge spikes of flowers almost as large as hyacinths.

KILGORE'S BORDER GROUP. A mixture of various colors and varieties.

Each of the above:

Pkt. 10c; 3 pkts. 25c; ½ oz. 30c;
1 oz. 50c; ¼ lb. \$1.50.



Kilgore's Pure White Baby's Breath

Calendula

Plant from September thru January

Approx. time seed sowing to bloom—
3-3½ mos.

The Calendula is one of the finest winter flowers in Florida. It grows quickly from seed, transplants easily, and is not affected by the coldest weather in Florida. Space the plants 18 inches apart and take off all buds from each stem except the center if largest flowers are desired for cutting. If a showy display is wanted in the garden, allow all the buds to develop.

KILGORE'S GOLDEN ORANGE.

Dark Orange.

KILGORE'S SULPHUR QUEEN.

Rich lemon-yellow.

KILGORE'S EXCELLENT MIXTURE.

Made up in shades of orange, yellow, and lemon.

Prices on each of the above:

Pkt. 10c; 3 pkts. 25c; ½ oz. 30c;
1 oz. 50c; ¼ lb. \$1.50.

Calliopsis

Plant from September thru February

Approx. time seed sowing to bloom—4 mos.

Bushy, wiry plants with large, loose clusters of yellow and dark crimson flowers, usually with a distinct eye in the center. Requires very little care and yields such a profusion of blooms that they may be cut generously without destroying the beauty of the bed. Plant them in groups, borders, or beds.

KILGORE'S CHOICE MIXTURE. Choice varieties of the various shades.

Pkt. 10c; 3 pkts. 25c; ½ oz. 30c;
1 oz. 50c; ¼ lb. \$1.50.

Carnation

Plant from September thru December

Approx. time seed sowing to bloom—3-4 mos.

We offer the New Improved Giant Chaudaud strain, very superior to any other outdoor type. Each plant produces from 10 to 20 stalks of intensely fragrant flowers. Allow plenty of space, at least 12 to 18 inches for each plant.

KILGORE'S CHARM MIXTURE. Pkt. 10c; 3 pkts. 25c; ¼ oz. 60c; ½ oz. \$1.00; 1 oz. \$1.75.

Cosmos

Plant from March thru May

Approx. time seed sowing to bloom—
2½-3 mos.

Plants grow 3 to 5 feet tall, covered with finely divided, bright green, fern-like foliage which makes a handsome background for lower growing plants. The blooms are large and double, or single with a crested center, entirely different from the ordinary single varieties. The seed germinates easily and quickly. Plant seed ¼ inch deep.

KILGORE'S ORANGE FLARE COSMOS. (Improved Florida Cosmos). A new introduction. It is the richest deep orange imaginable and is borne freely on rather bushy, sparse-foliaged plants 2 or 3 feet high. One of its outstanding characteristics is its early blooming habit. Desirable for borders or bedding, and with its long wiry stems, it makes an excellent plant to grow for cut flowers.

Pkt. 10c; 3 pkts. 25c; ¼ oz. 50c;
½ oz. 75c; 1 oz. \$1.25.

KILGORE'S CHOICE BLEND.

Choice double varieties.

Pkt. 10c; 3 pkts. 25c; ¼ oz. 60c;
½ oz. \$1.00; 1 oz. \$1.75.

Cuphea - Firefly

Plant from January thru March

Approx. time seed sowing to bloom—
3-3½ mos.

A dwarf, compact, showy plant with many small and delicately formed flowers, fiery red in color. The plant is a tender annual, blooming profusely throughout the summer. Recommended for the rockery, for window boxes, and ideal as a border or edging plant.

Pkt. 10c; 3 pkts. 25c; ⅛ oz. \$2.00;
¼ oz. \$3.50.

Cynoglossum

Chinese Forget-me-not

Plant from September thru March

Approx. time seed sowing to bloom—2-3 mos.

A bushy plant, 18 to 20 inches high, covered with sprays of lovely sky-blue flowers.

KILGORE'S SKY BLUE.

Pkt. 10c; 3 pkts. 25c; ½ oz. 30c; 1 oz. 50c; ¼ lb. \$1.50.

Cypress Vine

Plant from March thru May

Approx. time seed sowing to bloom—2 mos.

This is the most graceful of all small vines. It is unexcelled for a neat trellis or for ornamenting trunks of trees because of the finely cut foliage and the many star-shaped flowers.

KILGORE'S CYPRESS VINE MIXTURE.

Pkt. 10c; 3 pkts. 25c; 1 oz. 35c;
¼ lb. \$1.25; 1 lb. \$3.50.

Daisy—African—*Arctotis Grandis*

(See page 8.)

Daisy—Dahlborg

Plant from September thru January

Approx. time seed sowing to bloom—3 mos.

This tiny yellow daisy makes one of the finest winter edgings. Growth is rapid and the plants start to bloom when about 3 to 4 inches tall. Set seedlings 12 inches apart along the walk for a solid ribbon of blossoms.

Pkt. 10c; 3 pkts. 25c; ¼ oz. 75c;
½ oz. \$1.25; 1 oz. \$2.00.

Daisy—Shasta

Plant from September thru March

Approx. time seed sowing to bloom—4 mos.

These are marvelous cutting flowers, fine for borders, bedding, pots and window-boxes. They are easy to transplant. Set them 12 to 15 inches apart. Plants are 2 to 3 feet tall.

KILGORE'S NEW SINGLE AND SEMI-DOUBLE GIANTS. A new introduction. Flowers are pure glistening white, with bright yellow center, growing about 50% doubles. Singles are exceedingly large in size, much larger than ordinary strains, averaging three to four inches in diameter. Very large and beautiful.

Pkt. 10c; 3 pkts. 25c; ⅛ oz. \$3.00;
¼ oz. \$5.00.



A Bed of Shasta Daisies

Daisy—Painted OR PYRETHRUM

Plant from September thru March

Approx. time seed sowing to bloom—4 mos.

Large Daisy-like flowers, ranging in color from white and pink to deep rose and crimson, with lacy, fern-like foliage, and 12 to 24 inch spread, two feet in height. Long lasting cut flowers, blooms in spring and in fall.

KILGORE'S SINGLE AND DOUBLE MIXED.

Pkt. 10c; 3 pkts. 25c; 1/8 oz. 50c;
1/4 oz. 75c; 1/2 oz. \$1.35; 1 oz. \$2.50.

Dianthus—Chinese Pinks

Plant from September thru January

Approx. time seed sowing to bloom—3 mos.

The Dianthus, or China Pinks, are extremely popular because of their varied and lovely rich coloring. They are hardy and have few equals in profusion of beautiful bloom. The plants grow 12 to 18 inches tall and are fine for massing, bordering, and cut-flowers. Plants should stand 4 to 6 inches apart. Good for borders and as a cut flower.

SWEET WIVELSFIELD. Large, sweet-scented flowers, resembling Sweet William. Borne in clusters well above the foliage. Includes many fine colors of single flowers.

MOURNING CLOAK. Dark Mahogany red, double flowers with velvety black sheen, each petal bordered white, giving an attractive lace-like effect.

KILGORE'S MEDAL MIXTURE.

Composed of a mixture of all different colors and varieties.

Prices on each of the above:

Pkt. 10c; 3 pkts. 25c; 1/2 oz. 30c; 1 oz. 50c; 1/4 lb. \$1.50.



Sweet Wivelsfield Dianthus

Gaillardia—Blanket Flower

Plant any month in the year

Approx. time seed sowing to bloom—2-3 mos.

These are brilliant flowers of gorgeous yellow, orange, and dark crimson hues, very desirable for cutting. Give them sandy soil, moist but thoroughly well drained. They require a sunny location as they are sun-loving flowers.

GAILLARDIA LORENZIANA. Produces long-stemmed, double flowers quickly from seed, with attractive tubular petals.

Pkt. 10c; 3 pkts. 25c; 1/2 oz. 30c;
1 oz. 50c; 1/4 lb. \$1.50.

Globe Amaranth

Gomphrena

OR FLORIDA BACHELOR'S BUTTON

Plant from February thru July

Approx. time seed sowing to bloom—3 mos.

A very showy, everlasting flower with clover-like heads. Grows to a height of about eighteen inches. Very valuable for edgings.

Assorted Colors.

Pkt. 10c; 3 pkts. 25c; 1 oz. 35c;
1/4 lb. \$1.25.

Gourds—Ornamental

Plant from February thru May

Approx. time seed sowing to fruit—4 mos.

Gourds have become esteemed for many uses. The small fancy gourds are excellent toys for children. Larger gourds may be used in table arrangements as dippers, sugar troughs, spoons, bowls, also as birdhouses and nests. The fruits are oddly shaped and highly colored. Vines should be supported on a trellis or fence. Grow in light sandy soil in full sun.

SMALL VARIETIES MIXED.

(all shapes, colors and sizes).

Pkt. 10c 3 pkts. 25c; 1 oz. 35c;
1/4 lb. \$1.25.

Helichrysum—Strawflower

Plant from September thru March

*Approx. time seed sowing to bloom—
2-2 1/2 mos.*

Large, showy flowers of straw-like texture which retain their brilliant colors when dry, making them useful for decorative purposes in winter when they will keep indefinitely. The seed should be sown where plants are to bloom and thinned out 1 foot apart. When drying for preservation, cut with long stems before the blossoms open completely, and hang them in the shade, with their heads down, so that the stems will dry straight. Plant seed 1/4 inch deep.

KILGORE'S MANY COLORS. A mixture containing fiery red, canary, silver, rose, salmon, and blue.

Pkt. 10c; 3 pkts. 25c; 1/2 oz. 30c;
1 oz. 50c; 1/4 lb. \$1.50.

Helianthus

Ornamental Sunflower

Plant from February thru August

Approx. time seed sowing to bloom—
1½-2 mos.

Grows fairly tall and is very showy. The immense, brilliant flowers resemble chrysanthemums. It is easily grown and is especially suited to muck land or low soil with plenty of moisture. A fine background for lower plantings, as a fence-border, or grown in clumps. Sow seed thinly, cover ¼ inch deep, and thin out to 2 feet apart.

SUNSHINE MIXTURE

Pkt. 10c; 3 pkts. 25c; 1 oz. 35c;
¼ lb. \$1.25.

Larkspur

Plant from November thru January

Approx. time seed sowing to bloom—
2½-3 mos.

This is the annual form of the always-popular Delphinium, and blooms quickly from autumn-sown seed. The range of color includes all shades of blue, pink, red, and white, borne on long spikes. The seed should be soaked in water in a refrigerator about forty-eight hours before sowing, and should be sown during cool weather. Sow about ⅛ inch deep. The seedlings should be thinned to stand from 12 to 18 inches apart. They like plenty of fertilizer, full sun, and an abundance of water.

KILGORE'S LARKSPUR MIXTURE.

Pkt. 10c; 3 pkts. 25c; ½ oz. 30c;
1 oz. 50c; ¼ lb. \$1.50.

Lupin

Plant from September thru December.

Approx. time seed sowing to bloom—
2-2½ mos.

Plants make decorative, palm-like foliage and stems covered with bristly hairs. Flowers are pea-shaped, borne in spires of varying length. Exceptionally desirable for cutting and bedding. Thin the plants to 12 inches apart. They like full sun but will flourish in partial shade. Their one requirement is abundance of water during the blooming season.

Assorted Colors.

Pkt. 10c; 3 pkts. 25c; 1 oz. 35c;
¼ lb. \$1.25.

Morning Glory

Improved Ipomea

Plant from March thru June

Approx. time seed sowing to bloom—2 mos.

This is a favorite for shading porches, covering trellises and fences, a rapid grower for dense shading, producing immense numbers of very large flowers. Sow seeds after frosts, when soil is warm. Seed coats are very hard, and germination may be hastened by filing through the outer shell and soaking in warm water for twenty-four hours before planting.

KILGORE'S HEAVENLY BLUE IMPROVED. This improved strain is superior to the old strains. The large deep blue flowers stay open late in the day.

Pkt. 10c; 3 pkts. 25c; ¼ oz. 35c; ½ oz. 60c; 1 oz. \$1.00; ¼ lb. \$3.00.



Kilgore's Superb Mixture Petunias—Ideal for bedding (See page 16)

Marigold

Plant from February thru May and again in September

Approx. time seed sowing to bloom—
1½-2 mos.

Marigolds are rapidly growing in prominence as a popular Florida garden flower. Plant breeders have probably devoted more attention to improving Marigolds during the last few years than any other flower plants. As a result, many new outstanding varieties have been introduced recently, which represent great improvements over old types. We list and describe below the best of these new improvements.

These tall, aromatic plants, with fern-like foliage, produce gigantic, double, frilled flowers of much greater size and substance than the old-fashioned types. They make a splendid garden show, and are magnificent when cut. Plant the seed ¼ inch deep, and thin or transplant the seedlings 1 to 2 feet apart.

CROWN OF GOLD (collarette type)

Gold Medal—All-America Selections 1937

Flowers are bright golden-orange color, having a collar of big, wide, drooping petals. Plants grow about two feet tall, bloom early and profusely for a long period. Beautiful in the garden and excellent for cutting. The only Marigold with entirely odorless foliage. This new variety has been given the highest rating by All-America judges.

Pkt. 10c; 3 pkts. 25c; ¼ oz. 50c; ½ oz. 75c; 1 oz. \$1.25; ¼ lb. \$3.50.

YELLOW SUPREME

Gold Medal—All-America Selections 1935

Like Guinea Gold it is very free flowering, compact, and somewhat pyramidal in habit, two to two and a half feet tall, bearing loosely ruffled, carnation-flowered blossoms. The color is a creamy, lemon yellow. The light golden-yellow petals fairly glow and sparkle.

Pkt. 10c; 3 pkts. 25c; ¼ oz. 50c;
½ oz. 75c; 1 oz. \$1.25; ¼ lb. \$3.50.

DWARF DOUBLE HARMONY

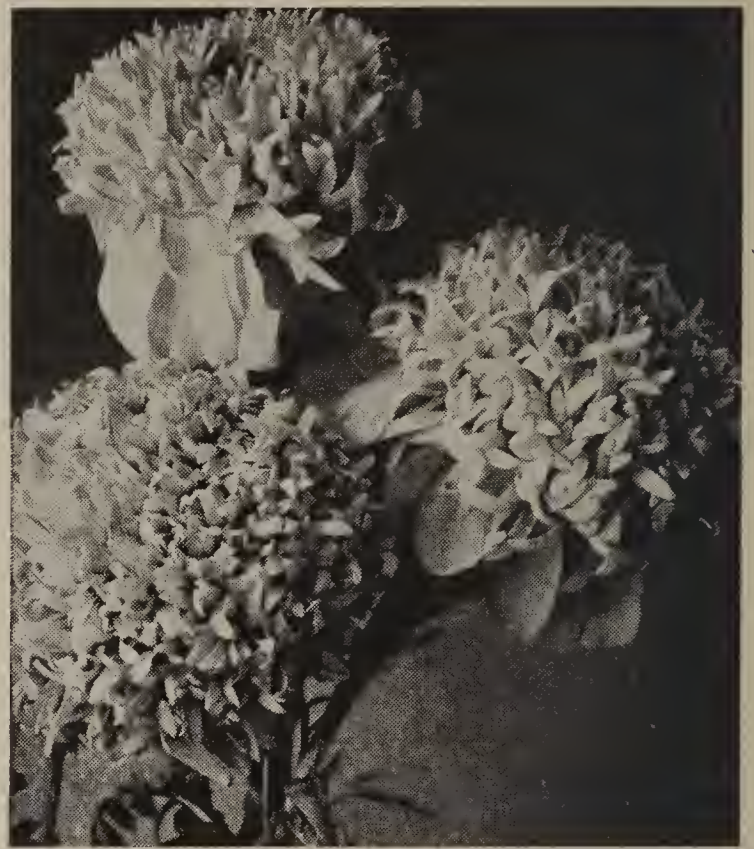
An excellent dwarf French Marigold, growing to a height of about 12 inches, scabious-flowering, with a bright golden yellow center, bordered with a dark maroon-brown color. Plants are of bushy habit and form excellent material for bedding and edging or borders.

Pkt. 10c; 3 pkts. 25c; ¼ oz. 50c;
½ oz. 75c; 1 oz. \$1.25; ¼ lb. \$3.50.

TALL AFRICAN DOUBLE MIXTURE

Plants 2½ to 3 feet high, produce immense ball shaped, perfectly double yellow and orange blooms on long stiff stems. Excellent for beds and cutting.

Pkt. 10c; 3 pkts. 25c; ¼ lb. 35c;
½ oz. 60c; 1 oz. \$1.00; ¼ lb. \$3.00.



Marigold—Crown of Gold

GIGANTEA SUNSET GIANTS MIXTURE

This new free flowering Marigold is the most amazing Marigold of the century. It is very showy, is sweet scented, and has exceptionally large size blossoms. The most remarkable feature is the delicate sweet fragrance of the blossoms. The stems are long and the flowers are excellent keepers after cutting. Striking bold colors range from deep orange through golden orange, deep golden yellow, and light yellow.

Pkt. 10c; 3 pkts. 25c; ¼ oz. 60c;
½ oz. \$1.00; 1 oz. \$1.75.

GUINEA GOLD

Gold Medal—All-America Selections 1933

The masses of lovely golden orange flowers cascade down the sides of the pyramidal plants like showers of molten gold. The carnation-like, odorless flowers are semi-double and loosely ruffled. Possess excellent keeping qualities.

Pkt. 10c; 3 pkts. 25c; ¼ oz. 35c;
½ oz. 60c; 1 oz. \$1.00; ¼ lb. \$3.00.

CHRYSANTHEMUM-FLOWERED HYBRIDS

These hybrids consist of a variety of new and distinct flower types, varying in size of bloom from two to four inches in diameter. The different types of flowers are most fascinating and contain all shades of orange and yellow. The plants are about 3 feet high, supporting masses of flowers on fine, long stems for cutting.

Pkt. 10c; 3 pkts. 25c; ¼ oz. 75c;
½ oz. \$1.35 1 oz. \$2.50.

Nasturtium

Plant from September thru March

Approx. time seed sowing to bloom—2-3 mos.

The nasturtium is very easily grown, and succeeds best in rather dry, sandy or gravelly, well-drained soil. The large, double and semi-double, sweet-scented flowers are especially valuable for cutting. The plants have a long blossoming period (3-4 months) provided the flowers are kept picked off before seed is formed. Flowers are borne on long stems, well above the foliage, making them very attractive and valuable as bedding plants and as cut flowers.

DOUBLE SWEET-SCENTED VARIETIES

These sweet-scented nasturtiums have become exceedingly popular. Plants form a vigorous bush which throws out short runners averaging 18 inches.

Giant Double Semi-Dwarf, Gleam Varieties

DOUBLE GOLDEN GLEAM. Large golden yellow blooms, 2½ to 3 inches across, borne on long stems well above the foliage. A blaze of intense, gleaming, golden yellow color when in full bloom. Especially fine for cutting.

DOUBLE PRIMROSE GLEAM. Large, attractive, primrose-yellow, sweet scented, double flowered, produced freely on extra long, stout stems.

DOUBLE SCARLET GLEAM. The flowers are a fiery orange scarlet, and of immense size, almost three inches across. The plants bear the numerous semi-double with some single flowers well above the foliage on long stems.

DOUBLE GLEAM HYBRIDS. The hybrids are a collection of gorgeously colored, large, well-formed flowers of dazzling beauty. A very brilliant mixture of an amazing range of showy colors. There are some singles among the blossoms, although mostly double and semi-double.

New Dwarf Double Sweet-Scented Varieties

This new type makes compact, bushy or globular plants about one foot high. The dwarf rounded plants are most attractive for beds, borders, rock gardens and pot culture.

GOLDEN GLOBE DWARF. Large golden-yellow blooms, borne on long stems, on dwarf, compact, rounded plants.

DWARF GEM MIXTURE. Dwarf, compact, gem-like plants producing large double sweet-scented blooms of excellent color range.

Prices on each of the above:

Pkt. 10c; 1 oz. 20c; ¼ lb. 65c; 1 lb. \$2.00.

Giant Pansy

Plant from September thru December

Approx. time seed sowing to bloom—
2½-3 mos.

Pansies make charming cut flowers, and nothing is more beautiful for massing and edging in the garden. The seeds should be sown in a shallow box and the seedlings transplanted, giving some shade and plenty of water. Pansies must be grown during the cool season.

KILGORE'S ENGLEMANN GIANT MIXTURE. This is the largest flowered pansy ever introduced. Flowers have thick, velvety petals, and are borne on strong stems.

Pkt. 10c; 3 pkts. 25c; ⅛ oz. \$1.75;
¼ oz. \$3.00.

Phlox Drummondii

Plant from September thru February

Approx. time seed sowing to bloom—
2½-3 mos.

Blooms practically all year. Seed should be soaked for forty-eight hours in a refrigerator before sowing. Plant about ¼ inch deep, and transplant seedlings or thin to 6 inches apart. It is excellent for planting in barren places. Makes a long-lasting cut-flower.

KILGORE'S PENINSULAR MIXTURE.

Pkt. 10c; 3 pkts. 25c; ¼ oz. 35c;
½ oz. 60c; 1 oz. \$1.00; ¼ lb. \$3.00.

Poppy, California

Eschscholtzia

Plant from September thru January

Approx. time seed sowing to bloom—
2½-3 mos.

Beautiful, low-growing plants with gray-green, fern-like foliage and vivid, cup-shaped flowers freely produced for many weeks. Ideal for beautifying vacant lots. Sow where they are to bloom, as poppies are hard to transplant.

KILGORE'S GORGEOUS MIXED.

Pkt. 10c; 3 pkts. 25c; ½ oz. 30c;
1 oz. 50c; ¼ lb. \$1.50.



Golden Globe Dwarf Nasturtium (New)

Petunia

ONE OF THE BEST ANNUALS FOR GENERAL PLANTING IN FLORIDA

Plant from September thru June. Approximate time seed sowing to bloom—2½ to 3 months.

By sheer merit, the Petunia has earned a place near the top of any list of winter and spring annuals for Florida. Each year there are more and more acres of blooming petunias scattered across the state of Florida. They are outstanding favorites and used extensively for bedding, bordering and roadside beautification. The single, small flowered sorts will stand considerable cold and will bloom well into the hot days of summer.

The very small seeds should be sown in boxes and transplanted when the seedlings are well grown, to the bed or border, setting plants 18 inches apart. Petunias are in nowise particular, but do best in moderately rich, well drained, though moist soil. Since they grow and bloom over long periods they require lasting fertilizer for best results. For use on Petunia beds when they are made up there is no better fertilizer than bone meal. When transplanting, make the soil rich with well rotted manure. Set the plants the same depth that they grew before.

DWARF, ERECT PETUNIAS 6 to 10 inches tall

ROSY MORN. Dwarf, compact, constantly blooming plants with small, brilliant light pink flowers with white centers. One of the finest types, especially desirable for growing in pots, urns and boxes.

HEAVENLY BLUE. Plant is dwarf in growth. Flowers are a beautiful light blue. Entirely distinct.

Prices on each of the above:

Pkt. 10c; 3 pkts. 25c; ⅛ oz. 50c;
¼ oz. 75c; ½ oz. \$1.35; 1 oz. \$2.50.

SINGLE PLAIN PETALED PETUNIAS 18 inches tall

ELK'S PRIDE. This is one of the most beautiful of all Petunias. The flowers give one the impression of looking at a piece of rich purple velvet. Seed of this variety is very rare and expensive.

Pkt. 10c; 3 pkts. 25c; 1/16 oz. \$3.00;
⅛ oz. \$5.50.

HOWARD STAR IMPROVED. Crimson-maroon flowers with a clearly defined star of pure white. A very striking flower.

Pkt. 10c; 3 pkts. 25c; ¼ oz. 60c;
½ oz. \$1.00; 1 oz. \$1.75.

KILGORE'S VELVET RED. Deep, velvety blood-red. Very beautiful and showy.

Pkt. 10c; 3 pkts. 25c; ⅛ oz. 75c;
¼ oz. \$1.25; ½ oz. \$2.25; 1 oz. \$3.75.

KILGORE'S BALCONY WHITE. Produces large, pendulous blooms of pure white color. A wonderful window box variety.

Pkt. 10c; 3 pkts. 25c; 1/16 oz. 60c;
⅛ oz. \$1.00.

KILGORE'S SUPERB MIXTURE. A well selected blend of the finest types and deepest richest colors of the plain petaled, tall growing petunias.

Pkt. 10c; 3 pkts. 25c; ¼ oz. 50c;
½ oz. 75c; 1 oz. \$1.25; ¼ lb. \$3.50.



Kilgore's Balcony White Petunia

Fluffy Ruffles Petunia

These are among the most beautiful petunias and well worth the ambition of everyone to produce. The huge blossoms are wonderfully ruffled and range bewilderingly through shades of pink, blue, scarlet, lavender, crimson, purple, white, and intermediate hues, markings, and curious blotches. The flowers measure 3 to 4½ inches across and are gorgeously ruffled.

MIXTURE; Pkt. 10c; 3 pkts. 25c; 1/16 oz. \$3.00; ⅛ oz. \$5.50.

Portulaca—Sun Plant

Plant from February thru August

Approx. time seed sowing to bloom—1½ mos.

A creeping, succulent plant about 6 inches high which thrives in sunny locations. Produces large, very brilliant flowers which open only in full sunshine early in the morning. It is excellent for massing, edging, rockwork, and sowing broadcast in the open ground. The seed is very fine; sow it thinly and do not cover. May be thinned or transplanted 6 to 12 inches apart.

FINEST DOUBLE MIXED. All colors.

Pkt. 10c; 3 pkts. 25c; ¼ oz. 55c;
½ oz. 85c; 1 oz. \$1.50; ¼ lb. \$5.50.

Pyrethrum

See Painted Daisy, page 12.

Queen Anne's Lace Flower

Plant from September thru January

Approx. time seed sowing to bloom—2-3 mos.

Queen Anne's Lace Flower has large heads made up of tiny white flowers, giving it a lace-like appearance. The flower clusters are borne on long stems which makes this flower very suitable to mix with other cut flowers. The plants vary in height from 3 to 5 feet depending upon location and how thickly sown. For best results set at least two feet apart as crowding stunts the growth of the plants.

Pkt. 10c; 3 pkts. 25c; ½ oz. 30c;
1 oz. 50c; ¼ lb. \$1.50.



Kilgore's Rust Proof Giant Mixed Snapdragons

Salvia—Scarlet Sage

Plant from September thru June

Approx. time seed sowing to bloom—3-4 mos.

The Scarlet Sage is one of the showiest and most easily grown plants for low hedges, bedding, and cutting. The seed is slow in germinating. Should be sown in a seed-box and transplanted to 8 inches apart in the garden.

SPLENDENS. This is the true, old-fashioned Scarlet Sage, growing 2 to 4 feet high, with spikes 1 to 1½ feet long. Brilliant scarlet.

Pkt. 10c; 3 pkts. 25c; ¼ oz. 55c;
½ oz. 85c; 1 oz. \$1.50; ¼ lb. \$5.50.

Scabiosa—Mourning Bride

Plant from September thru December

Approx. time seed sowing to bloom—5 mos.

The flowers of Scabiosa are borne on long, slender, graceful stems and are exquisitely scented. The colors are rich and varied—pure white, pink, yellow, blue, purple, red and variegated shades. As cut-flowers they are unsurpassed and they will last a week or more if cut before they have entirely opened. Plants should be set out 1 foot apart in any good garden soil.

KILGORE'S SUNRISE MIXTURE.

Pkt. 10c; 3 pkts. 25c; ½ oz. 35c;
1 oz. 60c; ¼ lb. \$2.00.

Snapdragon—Antirrhinum

Plant from September thru December

Approx. time seed sowing to bloom—3-4 mos.

GIANT SNAPDRAGONS

The Snapdragons which we offer produce massive spikes, with close-set large, velvety flowers which last for many days when cut. The seeds are small and slow to germinate. They should be planted in a shallow box of rich soil, and, when 4 inches high, may be transplanted in rich, moist soil 1 foot apart. As soon as the plants reach 8 inches in height they should be tied to light stakes until the side branches are well developed. Frequent cultivation and applications of fertilizer produce vigorous spikes and marvelous blossoms.

KILGORE'S RUST PROOF GIANT MIXTURE.

This is a blend of the finest outstanding shades.

Pkt. 10c; 3 pkts. 25c; ¼ oz. 55c;
½ oz. 85c; 1 oz. \$1.50; ¼ lb. \$5.50.

HALF-TALL SNAPDRAGONS WITH GIANT FLOWERS. (Rust Proof.) Preferred by many as they do not grow as tall as the new giant type. They are better to use in certain positions in the garden. A mixture of outstanding colors. Makes a beautiful bed.

Pkt. 10c; 3 pkts. 25c; ¼ oz. 50c;
½ oz. 75c; 1 oz. \$1.25; ¼ lb. \$3.50.

Early Spencer Sweet Peas

Plant from September thru December

Approx. time seed sowing to bloom, 2½-3 mos.

We have the choicest varieties and mixture for Florida. In planting, dig a trench 18 inches deep. Fill trench to within 2 inches of the surface with very rich, pulverized soil to which Wizard Sheep Manure or Comonite Cow Manure and Bone Meal have been added. Plant seed one inch apart and cover 2 inches deep. When plants are 5 inches high, furnish support for vines to run upon. Fertilize and water frequently. Keep faded flowers cut off to prevent seed pods forming. Sunshine and fresh air are essential to success with Sweet Peas.

KILGORE'S SKY BLUE.

KILGORE'S SCARLET DAZZLER.

KILGORE'S ROSE PINK.

KILGORE'S IMMACULATE WHITE.

Prices on each of the above:

Pkt. 10c; 3 pkts. 25c; 1 oz. 45c;

¼ lb. \$1.50; ½ lb. \$2.75; 1 lb. \$5.00.

KILGORE'S RAINBOW SWEET PEA MIXTURE. An unexcelled assortment in all popular shades.

Pkt. 10c; 1 oz. 25c; ¼ lb. 75c;

½ lb. \$1.25; 1 lb. \$2.00.

Statice

Plant from September thru January

Approx. time seed sowing to bloom—3 mos.

Slender, wiry, bushy plants, bearing masses of misty ever-lasting flowers in delicate shades of lavender, rose, blue, and white. Valued for drying and makes an excellent ever-lasting flower for winter bouquets. Plants grow 2½ feet high. Will stand some salt spray.

Assorted Colors.

Pkt. 10c; 3 pkts. 25c; 1 oz. 50c.



Vinca or Periwinkle

Tithonia or Florida Sunflower

Plant from February thru June

Approx. time seed sowing to bloom—3 mos.

In a mild climate where the season is long, as in Florida, this brilliant Mexican species makes a fine showing. Many tall branching stalks rise from the base and carry large leaves besides numerous blooms, which resemble small sunflowers in shape.

TITHONIA—FIREBALL. Dazzling as a ball of fire, the last word in brilliance of color. Very brilliant shade of scarlet orange. Flowers are single, very large, 4½ to 5 inches in diameter, and are carried on fine long stems. Plants are very tall, 7 to 9 feet, not subject to plant diseases. Extremely showy in the garden and an excellent cut flower. Flowers keep five to seven days when cut.

Pkt. 10c; 3 pkts. 25c; ¼ oz. 50c;
½ oz. 75c; 1 oz. \$1.35; 1 lb. \$2.50.

TITHONIA—ORANGE VERMILLION.

The flowers resemble a giant single dahlia of a vivid orange-vermilion; borne on huge bushes with woody stems and large leaves with velvet bloom.

Pkt. 10c; 3 pkts. 25c; ¼ oz. 50c;
½ oz. 75c; 1 oz. \$1.25; ¼ lb. \$3.50.

Verbena

Plant every month in the year

Approx. time seed sowing to bloom—3 mos.

Verbenas are trailing, graceful plants with handsome foliage which cover themselves with large heads of brilliant flowers in a great variety of colors. You will never appreciate the beauty of Verbenas until you have grown our Master Mixture. Sow the seed after soaking in water forty-eight hours in a refrigerator, in boxes or where they are to flower, and thin or transplant to a foot apart.

KILGORE'S MASTER MIXTURE.

Pkt. 10c; 3 pkts. 25c; ¼ oz. 55c;
½ oz. 85c; 1 oz. \$1.50; ¼ lb. \$5.50.

Vinca or Periwinkle

Plant any month of the year

Approx. time seed sowing to bloom—3 mos.

A very pretty ornamental plant, growing 1 to 1½ feet high, with dark foliage and dainty, bright flowers. Useful for bedding, edging and massing. Sow where the plants are to bloom or in boxes, and transplant about a foot apart each way. Makes an excellent ground cover for waste places. Does well in partial shade.

KILGORE'S PINK AND WHITE MIXED.

Pkt. 10c; 3 pkts. 25c; ¼ oz. 35c;
½ oz. 60c; 1 oz. \$1.00; ¼ lb. \$3.00.

Zinnia

IDEAL FOR SUMMER FLOWERS IN FLORIDA

Plant from February thru August.

Approx. time seed sowing to bloom—1½ months.

Double Giant Dahlia-flowered

The enormous flowers are fully double, with broad, undulating rays in magnificent solid colors. Flowers measure 4 to 6 inches across, rivaling dahlias in beauty and in perfection. The plants grow 2 to 3 feet high, and should be set at least 18 to 24 inches apart. The seed may be sown where the plants are to bloom. They like rich soil, plenty of water, especially during blooming time, which lasts for many weeks.

KILGORE'S CRIMSON GIANT. Crimson or brilliant red.

KILGORE'S WONDER ROSE. Light rose or pink.

KILGORE'S POLAR BEAR. The best large-flowered white Zinnia.

Prices on each of the above:

Pkt. 10c; 3 pkts. 25c; ¼ oz. 50c;
½ oz. 75c; 1 oz. \$1.25; ¼ lb. \$3.50.

KILGORE'S SUNBURST MIXTURE.

Pkt. 10c; 3 pkts. 25c; ¼ oz. 35c;
½ oz. 60c; 1 oz. \$1.00; ¼ lb. \$3.00.

Pompon or Lilliput

Plants are about 1½ feet high or less, bearing miniature flowers resembling pompon or button chrysanthemums. These are charming when cut and the plants make an excellent low edging or border for taller varieties.

Assorted Colors.

Pkt. 10c; 3 pkts. 25c; ½ oz. 35c;
1 oz. 60c; ¼ lb. \$2.00.

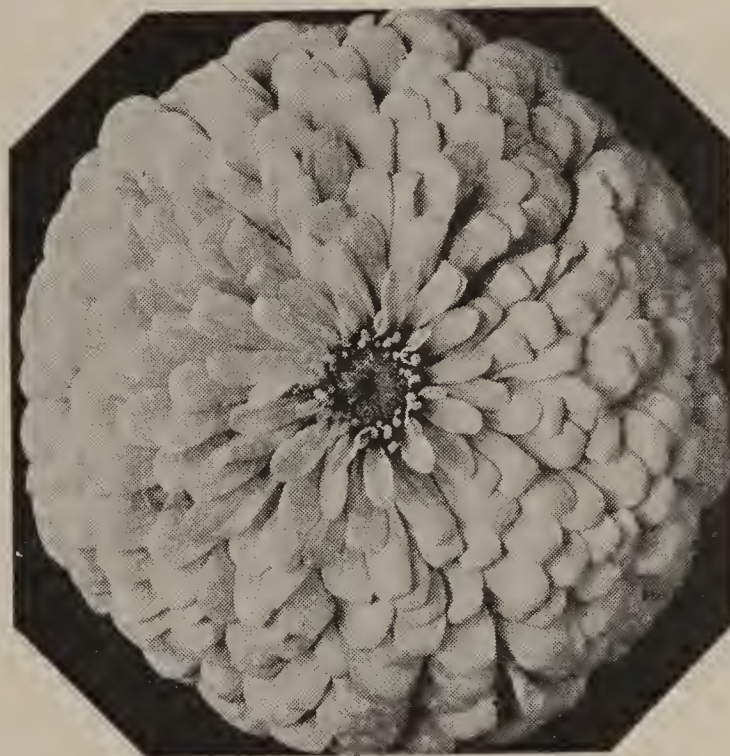
Dwarf Mexican Hybrids

Zinnia Mexicana

The small flowered Mexican Zinnias have a charm all their own. The smaller flowers lend themselves to bedding and make a brilliant display, and yet have stems long enough to make fine bouquets for small vases and bowls. The mixture contains many attractive colors and color combinations. Excellent for edgings.

KILGORE'S MEXICAN HYBRID MIXTURE.

Pkt. 10c; 3 pkts. 25c; ¼ oz. 50c;
½ oz. 75c; 1 oz. \$1.25; ¼ lb. \$3.50.



Giants of California Zinnia

Giants of California

The flowers are usually brighter than the dahlia-flowered type and are nearly as large, and similar in shape.

KILGORE'S SPECIAL MIXTURE.

Pkt. 10c; 3 pkts. 25c; ½ oz. 45c;
1 oz. 75c; ¼ lb. \$2.50.

Crown o' Gold Group

This group is one of the most outstanding developments among Zinnias. The petals of all the flowers are overlaid with a deep golden yellow at the base, with the individual flower color at the tips.

DESERT GOLD. Beautiful yellow shades.

Pkt. 10c; 3 pkts. 25c; ¼ oz. 55c;
½ oz. 85c; 1 oz. \$1.50; ¼ lb. \$5.50.

KILGORE'S SPECIAL CROWN O' GOLD MIXTURE. Includes rose, cream, yellow, carmine, red, pink and lavender.

Pkt. 10c; 3 pkts. 25c; ¼ oz. 60c;
1 oz. \$2.00.

Fantasy Group

The flowers of this group are double, of medium size, with shaggy petals that are tubular, curled or crested. Distinctly different from other Zinnias.

KILGORE'S FANTASY MIXTURE.

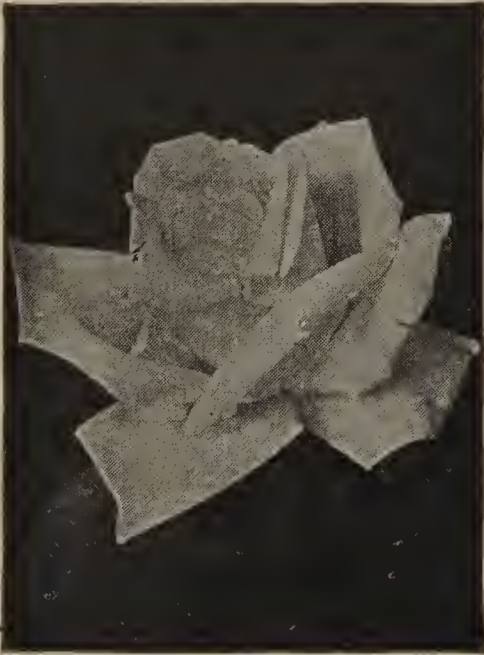
Pkt. 10c; 3 pkts. 25c; ¼ oz. 50c;
½ oz. 75c; 1 oz. \$1.25; ¼ lb. \$3.50.

Rose Bushes

Plant any time after October 1 to end of March

Approximate time from setting out to bloom—Strong No. 1 grade bushes—2 months.

Postage paid on rose bushes to any point in Florida.



White American Beauty

Rose Growing in Florida— 10 Suggestions

1. Locate the rose garden in a well drained spot where it receives at least five hours of sunlight each day, and avoid the vicinity of trees and large shrubs.

2. Enrich the soil before planting, using a mixture of black, sandy loam and a 4-7-5 fertilizer mixture. The loam should be thoroughly mixed with the plant food and allowed to stand at least one week before planting. The bed should be at least 18 inches to two feet deep.

3. Rotted stable manure is recommended for roses. Wizard Brand sheep manure, or Comonite Brand cow manure, used at the rate of 2 to 3 pounds per plant is very desirable.

4. Plant bushes 18 to 24 inches apart each way. Give climbers more room. Spread the roots carefully so they can develop freely. The roots should never be doubled up.

5. Plant at the same level that bushes stood in the nursery. Soil marks can be seen on the plant.

6. Use a heavy mulch of organic material, such as leaf mold or Wizard Brand sheep manure or Comonite Brand cow manure during the summer.

7. Give plenty of plant food. Fertilize every six to eight weeks during the growing season. Remember that roses must grow in order to bloom. One-half pound 4-7-5 per bush is plenty for each application, or a handful of bone meal with a small shovelful of Wizard Sheep manure or Comonite Brand cow manure may be used.

8. Give plenty of water—at least four times a week during dry weather. Use a soft, light stream so as not to jar the plants.

9. When planting, prune the bushes back to about 18 inches. Prune twice each season. Remove dead, infected and weak wood. Give heaviest pruning when plants are dormant.

10. Watch for black spot and rose canker, and dust or spray with a good fungicide. Spray or dust three times, not more than ten days apart, whenever diseases or insects appear.

Setting Rose Bushes. Dig hole sufficiently deep and wide to permit roots of plants to be set in natural position and not doubled up. First, put in two to three pounds of Wizard Brand Sheep Manure or Comonite Brand Cow Manure well mixed with a half pound of bonemeal or 4-7-5, and mix thoroughly in the soil. Then pour in a liberal supply of water, set bush, press the soil tightly around the roots, leaving no air spaces, and pack dug-out soil firmly around the plant. Do not set plant any deeper than it originally grew; you can discover this by observing the soil mark on the plant. Two-year-old bushes will bloom in two months after setting out. All the first buds should be pulled off so as to increase the vigor and growth of the plant. Roses need lots of water, should be fertilized every six weeks with our bonemeal and an occasional application of sheep manure, and should be cultivated frequently.

Our rose bushes are healthy, strong, field-grown, acclimated stock, all Florida and Texas grown, and therefore accustomed to Southern climatic conditions, and are budded on Rosa and Japonica Multiflora and Texas Wax stock. For fall planting, from October 1 to December, we can furnish only Texas stock. After December 1, we can furnish both Texas and Florida stocks.

Shipped Direct from Nursery. All orders will be shipped direct from the nursery to the customer. It will require from a week to ten days from the time order leaves customer to receive rose bushes, as all orders are filled in rotation, and it requires a little time to properly prepare rose bushes and make shipment. Therefore, we ask our friends to be a little patient as the order will be sent as quickly as possible.



Red Radiance

Prices of all varieties of roses are prepaid to any point in Florida. For export, prices are f. o. b. nursery after adding 25 % to prices indicated to cover special packing charges.

	Each	Three	Six	Twelve
Strong, No. 1 grade bushes	\$0.40	\$1.10	\$1.95	\$3.50

BUSH ROSES

PINK RADIANCE. (HT.) Flowers are a beautiful shade of the richest tone of pink, darker on the inner surface of the petals than on the margins. The buds are large and very fine. It is a very strong grower.

RED RADIANCE. (HT.) It has flowers of the same exquisite form and the same sweet fragrance as Pink Radiance. The color is a splendid, even shade of clear red, without a trace of any other color.

SHELL-PINK RADIANCE. (Mrs. Charles Bell) (HT.) Another of the Radiance family. A distinct light shell-pink. It is a wonderful rose, always in bloom, which is a heritage of all Radiance types.

WHITE AMERICAN BEAUTY. (Frau Karl Druschki.) (HP.) Buds fine and large, usually pure white, but sometimes with a slight shading of pink on outer petals.

WHITE KILLARNEY. (HT.) Produces wonderful, long, pointed buds, semi-double.

ALEXANDER HILL GRAY. (Yellow Maman Cochet). (T.) Flowers clear, lemon-yellow, large, and of perfect formation. Strong upright growth. One of the best yellow roses.

MAMAN COCHET, PINK. (T.) Rosy pink with shadings of silvery rose. A splended rose of sturdy habits. The fine buds last well when cut, are of large size, and open into full double, fragrant blooms. A medium spreading grower.

MAMAN COCHET, WHITE. (T.) of same sturdy habit, size of bloom, and delicate fragrance as the Maman Cochet, Pink, and of such a pearly white with exquisite shadings of most delicate pink. One of the few best roses.

MME. LOMBARD. (T.) Beautiful tints of rosy bronze, fawn, and salmon. Vigorous grower and a free bloomer.

LOUIS PHILIPPE. (Ben.) Another old favorite. In bloom all the year, with rich velvety crimson blooms. Strong, spreading habit.

PAUL NEYRON. (HP.) Largest rose known, surpassing even hothouse American Beauties. Deep rose-pink, full, double blooms with spicy fragrance, borne on strong, upright stems.

ETOILE DE HOLLANDE. (HT.) One of the reddest of red Roses. Good-sized blooms and buds borne on long stems.

VATERLAND. (HT.) Bud and flower large, opening full, double; handsome dark red with coppery reflexes. Foliage bronze and quite disease-resistant. Continuous bloomer all season.

KAISERIN AUGUSTE VIKTORIA. (T.) Free and regular bloomer from early to late. Pure white, on long stems.

LADY HILLINGDON. (T.) Has slender, pointed buds and exquisitely cupped flowers of apricot-yellow. Upright habit. Disease-resistant. Free continuous bloomer. One of the best.

LUXEMBOURG. (HT.) An extremely satisfactory Hybrid Tea Rose for Florida gardens. Flowers are rich apricot-yellow, shaded with copper, and lighter yellow at tips of the petals.

TALISMAN. (HT.) Presents unusual combination of orange and copper tones, suffused with pink. Truly multicolored. Flowers are high centered, double, and quite fragrant. Does best in partial shade in this latitude.

PRESIDENT HERBERT HOOVER. (HT.) Flowers produced on unusually long stems. A mixture of pink, yellow and flame tints. Very fragrant. This rose is not recommended for North Florida, but is excellent in the southern part of the state as a winter bloomer.

CLIMBING ROSES

CLIMBING RADIANCE. (Cl.H.T.) Registered with the American Rose Society. A perfect Radiance that is a strong climber and a free bloomer. The most desirable new rose for Florida introduced since the bush varieties of the Radiance group came out. Available in two colors, pink and red.

CHEROKEE (White). (Rosa Laevigata.) Ram-pant climber. Large, single, white, fragrant flowers produced in early spring.

CHEROKEE. (Pink or Anemone). Same as White Cherokee except that the color is glowing pink. They resemble huge apple blossoms.

PAUL'S SCARLET. (HW.) Vivid scarlet, shaded crimson. Makes a brilliant display for a long period of time in the garden.

CLIMBING PERLE DES JARDINS. (CT.) Florida's most satisfactory climbing yellow rose.

CLIMBING PINK MAMAN COCHET. (CT.) Nicely formed buds and flowers of pale pink, deeper at center.

CLIMBING WHITE MAMAN COCHET. (CT.) Large white blooms, tinted pink on outer petals with pale yellow centers.

RAMBLERS

REINE MARIE HENRIETTE. (CT.) One of the best red climbers. Bright red, pointed buds of good size. A vigorous grower.

CLASSIFICATION OF ROSES

Roses are descended from several distinct classes or families, and the following key will enable one to find to which strains or classes each belong. (HT), Hybrid Tea (HP), Hybrid Perpetual. (T), Tea. (Ben), Bengal. (Cl.H.T.), Climbing Hybrid Tea. (Cl.Nois). Climbing Noisette. (HW), Hybrid Wichuriana. (Poly), Polyantha.

LAWN GRASSES FOR FLORIDA



Beautiful Lawns Can Be Grown in Florida

Starting the Grass or Lawn

A rich, reasonably moist soil with ample provision for watering during dry weather is necessary for growing a good lawn.

It is advisable, wherever possible, to pipe the lawn for water. There are many good water distributors on the market. The pipes may be laid in trenches a foot or so in depth at such intervals that the water from the distributors will cover the entire lawn at one time.

Previous to starting the grass, work into the soil as much organic matter as possible in the form of pulverized sheep manure, muck or woods mold. One of the best ways of putting the land in shape for grass, and to give the grass a good start, is to broadcast pulverized sheep manure or Comonite Brand cow manure at the rate of two and one-half to five pounds per hundred square feet, or 1,000 lbs. to a ton per acre before sowing the seed, or setting out the sprigs, wetting down the sheep manure well. Add to this at least 25 lbs. of a 4-7-5 fertilizer mixture or an equal amount of bone meal to every thousand square feet of space. Work all of this thoroughly into the soil, level the land and set rooted runners or plant grass seed. Water and weed regularly until the grass is completely sodded. Never let the lawn suffer for water. A thorough heavy watering, soaking the soil to a considerable depth, two or three times a week, is better than a light watering daily. It is best to water lawns in the evening.

Top Dressing Lawns

In winter apply 25 lbs. bone meal or a 4-7-5 fertilizer mixture to every thousand square feet of space. Spring and summer top dressings of Nitrate of Soda at the rate of three to four pounds to every thousand square feet of space should be made once a month. Follow immediately by thorough wetting down to prevent burning of the grass by the fertilizer. Wizard Brand Sheep Manure is very valuable for top-dressing after the lawn is started. It is desirable to cover the entire lawn once or twice a year with pulverized sheep manure or Comonite Brand cow manure to a depth of one-fourth to one-half inch.

How to Have Green Lawns In Winter In Florida

If cold weather turns the lawn brown, or if the lawn has brown unsightly spots in it, the entire lawn or these ugly spots can be freshened up at any time during the fall and winter, without digging or tearing up the lawn, by planting Italian Rye grass seed at the rate of one-half pound to 100 square feet of space right on top of the lawn, scattering sheep manure on top of the seed at the rate of two and one-half to five pounds per 100 square feet, and watering these spots frequently and heavily until the Italian Rye grass seed has germinated.

A lawn properly sets off the home, adds to its beauty, increases its value, and affords a clean, safe place for the children to play. A good lawn is much more attractive than a bare yard. A town's civic pride is judged largely by the class of lawns kept.

Prices quoted on grass seed are f.o.b. Plant City, except 1 lb. lots which are prepaid.

Write for prices on larger quantities.

Italian Rye Grass

Florida's Blue Grass

Plant 200 to 250 Pounds Per Acre

or 4 to 6 Pounds Per 1000 Square Feet

This is a most valuable and desirable fall and winter grass for Florida, but it does not make a permanent lawn. It dies out as soon as warm weather of late spring and early summer comes on. However, for quick covering of lawns and golf courses in winter it is unsurpassed. Plant 4 to 6 pounds per 1,000 square feet. Do not plant in Florida before October. It will make a vigorous luxuriant growth throughout the fall, winter and early spring but must have plenty of water. A common practice in Florida is to seed Italian Rye grass on other lawns in the fall and winter in order to have a velvety green lawn all winter.

1 lb. 15c; 10 lbs. \$1.10.

Bermuda Grass

Plant 100 to 150 Pounds Per Acre

or 2 to 4 Pounds Per 1000 Square Feet

Bermuda grass prefers loam or clay loam soil, and grows well on sand or muck, but requires an ample moisture supply, or a heavy subsoil which will retain moisture.

Bermuda will not grow very well in the shade. It spreads by surface runners, also by underground root stalks. A Bermuda lawn can be started by setting out the plants or by sowing seed. Seed can be planted from March to November. For lawns or golf courses, use two to four pounds per thousand square feet. Bermuda makes a beautiful, velvety, permanent lawn where plenty of water is available and proper care given. Bermuda grass requires frequent weeding to prevent it from thinning out.

1 lb. 40c; 10 lb. \$3.00; 25 lbs. \$7.00.

Hulled Bermuda

Plant 1 to 2 Pounds to Each 1,000 Square Feet of Lawn

This is the highest grade Bermuda grass seed. Formerly thought impossible, the hard, almost water-tight hulls of the seed are removed. This revolutionizes Bermuda lawn planting because of the quick, sure results it produces, the seed germinating in a week with proper moisture conditions.

1 lb. 50c; 10 lbs. \$4.25; 25 lbs. \$10.25.

Carpet Grass

Plant 100 to 150 Pounds Per Acre

or 2 to 4 Pounds Per 1000 Square Feet

Carpet grass is particularly well adapted to moist soil, and, if plenty of plant food and moisture are available, will grow readily on any soil type. However, this grass is not well suited to drouthy conditions. Plant in the spring from March to July. For lawns and golf courses use two to four pounds of seed per 1000 square feet.

1 lb. 35c; 10 lbs. \$2.60.

Centipede Grass

Use One Bushel of Sprigs Per 400 Square Feet or 70 to 75 Bushels Per Acre

Centipede grass makes a very attractive lawn with less attention than any of the other lawn grasses. It requires less water and mowing, and once established, holds its stand indefinitely. It is adapted to dry sandy soils better than other grasses. Centipede grass is planted by sprigs or root runners, three to five inches long, in rows 10 to 12 inches apart, and 5 to 6 inches apart in the rows. Insert these sprigs in the ground, leaving about one-half to one inch showing. Cover with soil immediately to prevent drying out. For the first few months the lawn will need frequent watering until the plants are rooted firmly. It is best to plant during the rainy season.

1 bu. \$1.25; 5 bu. \$5.50; 10 bu. \$9.50.
Not prepaid. Shipped only by Express from our Lake Wales, Florida, Nursery.

Bitter Blue-Stemmed St. Augustine Grass

(Chinch Bug Resistant)

Use One Bushel of Sprigs Per 300 Square Feet

A better grass in every way than the old variety of St. Augustine. It is a stronger grower, is much tougher, holds its color in cold weather, has a longer and stronger root system so will stand more dry weather. The joints are close and the runners grow flat on the ground. It does well in shaded places. It is extremely chinch bug resistant and very distasteful to this serious pest of lawn grasses. Sprigs should be planted in well prepared soil, setting about 6 x 9 inches apart.

1 bu. \$1.50; 5 bu. \$7.00; 10 bu. \$13.50.
Not prepaid. Shipped only by Express from our Jupiter, Florida, Nursery.



A type of Rock Garden easily adapted to many Florida homes.
The Pool and Rock Garden usually belong together.

THE ROCK GARDEN

In many a garden, slopes and gullies which seem devoid of possibilities can be transformed into fascinating features with a rock garden. Some of the most attractive rock gardens have been made in small nooks and corners.

To start a rock garden, excavate to a depth of about 2 feet and put in from 6 to 12 inches of small stones or shells. A tile drain can lead off from this if necessary.

After drainage has been installed as indicated, fill in the remaining depth with soil. Put in place the first or bottom layer of rocks and tamp thoroughly around them to prevent air pockets and settling, and be sure

that the rocks tilt back slightly and not forward. The more porous the rocks or stones, the more moisture will be retained during dry periods. Tufa, hard sandstone, coral rock, and rock which has become honey-combed through weathering, are excellent types for rock garden purposes. Keep rough and weathered edges to the front to simulate naturalness and age. Use broken rock mixed with soil back of the foundation rocks. Be sure that sufficient good soil is placed under the stones and rocks for the plants to grow in. Build up with sufficient layers, until you have reached the desired height. When planting, place the roots deeply into the recesses. Water frequently in dry weather.

We recommend the following annuals for use in the rock garden:

AGERATUM (Page 8)

ALYSSUM (Page 8)

ASTER (Page 9)

CANDYTUFT (Page 10)

CUPHEA, FIREFLY (Page 11)

CYNOGLOSSUM (Page 11)

DIANTHUS (Page 12)

NASTURTIUM, Dwarf Double (Page 15)

ZINNIA, MEXICANA (Page 19)

CALIFORNIA POPPY (Page 15)

PANSY (Page 15)

PETUNIA (Page 16)

PHLOX (Page 15)

PORTULACA (Page 17)

SNAPDRAGON, Half Tall (Page 17)

VERBENA (Page 18)

ZINNIA, POMPON (Page 19)

CONSTRUCTION OF AN INFORMAL POOL

The pool and rock garden usually go together. To make a pool, no forms are necessary. Simply hollow out the chosen space to the desired shape. We recommend 4 inches of concrete for any pool, as the extra inch or two may save a lot of trouble in the long run. To avoid cracks forming, it is most important to have the concrete reinforced with steel rods or with No. 9 or No. 12 gauge wire in mesh not over 6 inches. An overflow and

drain should be provided. Rock decorations will add to the natural appearance of the pool.

CAUTION: A new pool must be filled and refilled with fresh water and drained every few days for at least three or four times before planting lilies or introducing fish, in order to remove the alkali in new cement which is very injurious to fish and aquatic plants.

Fertilizers for the Flower Garden and Lawn

WIZARD BRAND SHEEP MANURE WILL MAKE YOUR PLANTS GROW

There is nothing better as a general fertilizer for the home grounds than this natural soil-building plant-food. Wizard is pure sheep manure, highly concentrated, with all weed seeds killed. It supplies the humus and natural plant-food so much needed by Florida soils. Feed your plants with Wizard—then watch them grow. Wizard is lasting in its action.

For New Lawns use 10 to 12 pounds per 100 square feet and rake into the surface soil. On old lawns use 8 to 10 pounds per 100 square feet scattered broadcast and wet down with a hose.

For Flowers and Shrubs mix a handful of Wizard with the soil around each plant when setting out the new plants; more for shrubs, vines, and trees. On established plants mix a handful in the surface soil around each plant; for shrubs and vines use 1 to 5 pounds, for trees 5 to 20 pounds.

For Fruits and Vegetables use 1000 to 1500 pounds per acre. Apply with a drill in the row or hill. Wizard is a most profitable and lasting soil-building fertilizer.

Prices are f.o.b. Plant City or any Kilgore store.

10 lbs. 50c; 25 lbs. 85c; 100 lbs. \$2.25.

COW MANURE, COMONITE BRAND.

A dehydrated and pulverized manure that has been treated to kill wild grass and weed seeds. Excellent mechanical condition. Fine for flowers, lawns and shrubbery.

**Prices: 5 lbs. 20c; 10 lbs. 30c; 25 lbs. 60c;
100 lbs. \$1.85; ton \$35.00, f.o.b.**

Plant City or any Kilgore store.

GERMAN PEAT MOSS

Very good to add humus and hold moisture in seed beds. Especially valuable for sandy soils.

5c per lb. 1 bale (about 125 lbs.)

\$2.75; f.o.b. Plant City.

NITRATE OF SODA

Nitrate of Soda, 19% ammonia, should be used whenever the plants have been stunted by cold or drouth, giving them a small dose to hasten their recovery. Care must be used not to let this fertilizer come in direct contact with the plants so as to avoid burning.

5 lbs. 20c; 10 lbs. 30c; 25 lbs. 60c;

100 lbs. \$1.75, f.o.b. Plant City.

HARDWOOD ASHES

Ideal for sour or acid soils. Contains 2% potash. Put up in 100-lb. bags.

100 lbs. \$1.00, f.o.b. Plant City.

STEAMED BONE MEAL

This is a fertilizer containing 3% ammonia and 14% available phosphoric acid. It is highly recommended for use in the home grounds. Bone Meal can be used with safety, because it never burns even the tenderest sprouts.

5 lbs. 20c; 10 lbs. 30c; 25 lbs. 60c;

100 lbs. \$2.00; f.o.b. Plant City.

SPECIAL LAWN SHRUBBERY, TREE AND GARDEN FERTILIZER— NACO FLOWER AND SHRUB

This is a complete, balanced fertilizer, having a formula of 4-8-2 and containing 50% organic material. This special mixture combines all the elements needed by lawns, shrubs, young trees, flowers and vegetables in the right proportions to insure maximum development of the plants.

5 lbs. 20c; 10 lbs. 30c; 25 lbs. 60c;

100 lbs. \$1.90, f.o.b. Plant City.

INSECTICIDES AND FUNGICIDES

When ordering, please allow enough for postage because all prices quoted are f. o. b. Plant City or any Kilgore store.

"Black Leaf 40"

The Standard Contact Insecticide

"Black Leaf 40" is the world's leading nicotine insecticide for the control of aphids, thrips, leaf hoppers, crawling young scale, and other soft bodied insects. Safe on fruits, foliage and buds. Useful for all flowers and ornamentals. "Black Leaf 40" can be mixed with other sprays such as lead arsenate and Pyrox, thus saving the expense of separate applications for both chewing and sucking insects. An ounce bottle makes four gallons of spray.

Write for Free Spraying Guide

Prices: 1 oz. 35c; 5 oz. \$1.00; 1 lb. \$2.25;

2 lbs. \$3.25; 5 lbs. \$5.85, f.o.b. Plant

City or any Kilgore store. Mailable.

Nicotine Pyrox

The Complete Spray for Diseases, Chewing and Sucking Insects

Nicotine Pyrox is Pyrox treated with Nicotine, in order to make a complete spray for all garden pests, both insects and diseases. It not only kills leaf-chewing insects, and prevents blight and other diseases as the regular Pyrox does, but it also kills sucking insects such as aphids, thrips, and leaf hoppers. Nicotine Pyrox not only provides complete protection but also stimulates growth, helping plants to grow strong and healthy, and to produce in abundance.

Nicotine Pyrox should be used at the rate of five ounces to a gallon of water.

Prices: 17.6 oz. pkg. 50c; 5 lbs. \$1.75;

25 lbs. \$5.65, f.o.b. Plant City or

any Kilgore store. Mailable.

All prices quoted are f.o.b. Plant City or any Kilgore store.

Evergreen Spray

Evergreen Kills All Plant Insects on Your Flowers and Vegetables

Evergreen is an insecticide which is especially prepared with a standardized Pyrethrum content and thus serves as an ideal insecticide for home use on shrubs and flowers.

Most important to gardeners is the fact that Evergreen is non-poisonous to humans, birds and pets. Yet Evergreen is certain death to all plant insects, including both the chewing and sucking kinds. Thus Evergreen serves as an all-purpose insecticide which kills plant insects on shrubs and flowers. An ounce bottle makes four gallons of spray.

1 ounce bottle	\$.35
6 ounce bottle	1.00
16 ounce bottle (1 pint)	2.15
1 gallon	12.20

Red Arrow Insect Spray

Makes a perfect solution, harmless to foliage, non-poisonous to humans, animal or poultry life, safe and easy to use.

Kills all kinds of insects both sucking and chewing, and is good for spraying all kinds of flowers and shrubs. A one ounce bottle makes four to eight gallons of spray solution.

1 oz. bottle makes 4 to 8 gal. spray	\$.35
¼ pt. can makes 20-35 gal. spray	1.00
1 pt. can makes 70-140 gal. spray	1.90
1 qt. can makes 140-280 gal. spray	3.60
1 gal. can makes 560-1100 gal. spray	10.35

Magikil Jelly Ant Bait

Kills ants and is harmless to plants.

Safety Traps 25c; garden size, 35c; Estate tube 85c; 8 oz. Jumbo size, \$1.75.

Small Hand Sprayers and Dusters

All Prices quoted are postpaid.

Arnold Garden Hose Sprayer. This sprayer is used on a regular garden hose and eliminates for good all measuring, mixing, straining and hard work heretofore associated with spraying, and makes insect and plant disease control as simple and easy as watering your lawn. Price \$4.00 complete, with one cartridge of each kind.

The following cartridges are carried in stock in Plant City and all Kilgore stores for use in the Arnold Garden hose sprayer.

Balanced Fertilizer Cartridges. For plant feeding. Contains Nitrogen, Phosphoric Acid and Potash scientifically balanced. 20c each, ten for \$1.80.

P-R (Pyrethrum-Rotenone) Cartridges. For insect control. 35c each, six for \$2.00.

Cuprocide 54

Valuable for spraying on seed beds to prevent seedlings from damping off. Also a valuable, safe fungicide for spraying flower plants to control mildew, leaf spot, and other diseases. Leaves little visible residue.

3 lb. bag \$1.10.

Semesan

For treatment of all kinds of flower seeds, to control damp off diseases in seed-beds. May also be applied to seed-bed soils.

Each package has complete directions.

2 ozs.	\$0.35
1 lb.	2.25

Fly and Mosquito Spray

(Kilgore's)

A stainless liquid insecticide especially for household use. It kills roaches, bedbugs, ants, moths, mosquitoes and flies.

½ pt. 15c; pt. 25c; qt. 40c; gal. \$1.30.

Kilgore's Dusting Materials

ARSENATE OF LEAD POWDER

1 lb. 25c; 4 lbs. 55c.

COPPER-LIME DUST 20-80 (Bordeaux)
5 lbs. 75c; 10 lbs. \$1.05; 25 lbs. \$1.90;
50 lbs. \$3.05.

COPPER-LIME CALCIUM ARSENATE DUST 20-20-60

5 lbs. 80c; 10 lbs. \$1.25; 25 lbs. \$2.20;
50 lbs. \$3.80.

3% NICOTINE DUST

1 lb. 30c; 5 lbs. 95c; 10 lbs. \$1.55; 25 lbs. \$3.15; 50 lbs. \$5.70.

PYROCIDE DUST (Non-Poisonous)

No. 7½. Deadly to most kinds of insects on flowers and shrubs but harmless to humans and animals.

1 lb. 17c; 10 lbs. \$1.65; 25 lbs. \$3.75;
100 lbs. \$13.00.



Colloidal Sulphur Cartridges. For plant disease control, such as mildew, rust, scale, etc. 35c each, six for \$2.00.

Nicotine Cartridges. For control of sucking insects and plant diseases. 35c each, six for \$2.00.

Continuous Hand Sprayer. One of the best hand sprayers made. There is a continuous mist or spray from the time you start the pump until some seconds after it is stopped.

1 pint size—60c; 1 quart size—\$1.00

New Misty Hand Sprayer. This is a very serviceable sprayer. Made of heavy tin. Holds 1 quart. Price 50c.

Hudson Crystal Sprayer. This is a handy household sprayer. Capacity one-half pint. Glass bowl cannot corrode or rust out. Price 25c.

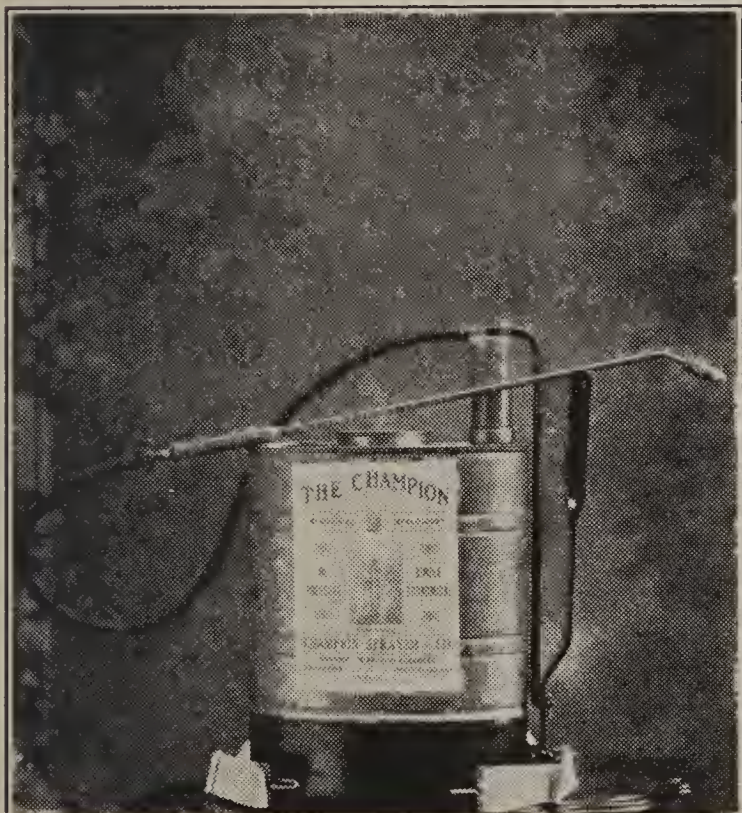
Hudson Autocrat Duster. A duster of ample capacity and power to insure efficient distribution of all kinds powdered insecticides. Holds one quart. Equipped with two 12 inch extensions, one narrow straight nozzle, and one wide angle nozzle. Price \$1.00.

Root Jumbo Plunger Hand Duster. One of the sturdiest, most efficient, practical hand dusters made. Ideal for vegetable gardens, flowers, trees and shrubs. Dusts both top and underside of plant foliage. Holds one pound. Price \$2.40.

Large Hand Sprayers and Dusters

VALUABLE FOR LARGE GARDENS, SHRUBS AND MEDIUM-SIZE TREES.

All prices quoted are postpaid.



Champion Sprayer. A high pressure sprayer with an outstanding nozzle, adjustable for all types of spraying. Easy to operate and of very simple construction, having only a few parts that ever need replacement. The pump is heavy, well-constructed and efficient, having the agitator attached. A very economical and efficient sprayer for commercial growers.

Brass tank, 5 gallons capacity, \$16.00.

Vermorel Knapsack Sprayer. The Vermorel sprayer does not have to be placed on the ground while pumping is done. A 40-pound pressure is maintained by an occasional stroke of the lever, which is placed at the right hand side of the spray tank. The tank is carried on the back, and is so shaped to fit snugly and comfortably.

Brass tank, 5 gallons capacity, \$17.00.

Brown Compressed Air Sprayers. Electrically welded and galvanized after being fabricated. This makes a tank lining having no seams. Equipped with 5-ply special spray hose automatic shut-off, seamless brass extension, swivel nozzle coupling and non-clog nozzle. One of the best compressed air sprayers made.

Brass tank, 4 gallons capacity, \$9.90.

Galvanized tank, 4 gallons capacity, \$6.50.

Root Challenge Duster. Following the Root principle of efficiency in design this duster maintains the high standard of construction, performance, high air velocity, with low power requirement. Simplicity and design permits a low price without sacrifice in quality. Feed lever can be adjusted to discharge any amount of dust desired. Capacity 7 to 10 pounds.

Price \$12.50.

Two-row attachment metal nozzle \$2.25.

Miscellaneous Garden Tools and Supplies

ORANGE CLIPPERS-WISS

The blades of this superior orange clipper are especially curved with smooth points and edges, so as not to bruise the fruit. Price \$1.00 each. \$10.00 per dozen, postpaid.

PLANET JR. GARDEN TOOLS

Save Work and Money

Kilgore Flower seeds, the best that money can buy, will not give the best results unless you give the plants grown from them proper care. Plant seeds at the proper depth, properly spaced in narrow rows, keep the ground

loosened up around your growing plants to kill the weeds before they get a start. The Planet Jr. line includes tools for doing this work economically and efficiently. They are the favorites of fussy gardeners all over the world. See Kilgore's spring vegetable catalog or write us for the complete Planet Jr. catalog describing all the different garden tools, and giving prices on same.

CYCLONE SEEDER

Made for any kind of grass seed which can be sown broadcast. Quickly adjusted for different kinds of seeds. Price \$2.50 postpaid.

HOTKAPS

Flowers protected with Hotkaps make earlier flowers. Hotkaps are patented wax paper cones which protect seed and plant against frost, rain, wind, birds and insects, and maintain a perfect mulch around tender plants. Hotkaps are inexpensive to buy and easy to set. Millions used every year. Especially valuable to protect tender flowers in winter.

New Flower Garden Package—25 Hotkaps with Setter—60c, postpaid.

Write for interesting pamphlet on Hotkaps

HORMODIN A

New root-forming chemical.

Speeds rooting of cuttings.

PERNET ROSE



Not Treated - - Hormodin Treated

Hormodin assures quicker and better rooting of cuttings. Many species heretofore impossible to propagate from cuttings may now successfully be grown from cuttings treated with Hormodin. Hormodin reduces the time it takes for roots to develop. Hormodin treatment is simple, no special equipment is needed. Hormodin A comes in liquid form and is applied as a dilute, water solution. Hormodin powder is easy to use, consisting of simply dropping moistened stems in powder, then planting. The cost of treatment is only a fraction of a cent per cutting. WRITE FOR BOOKLET "Facts About Hormodin." Full instructions furnished with each package. Prices on Hormodin A Liquid follow: 20 B.T.I. units 50c; 60 B.T.I. units \$1.00; 240 B.T.I. units \$2.50. Prices on Hormodin Powders: No. 1—For chrysanthemums, poinsettias, roses, etc., 1 $\frac{3}{4}$ oz., 50c; 1 lb. \$3.00; Powder No. 2—For semi-woody plants and most common shrubs, 1 $\frac{3}{4}$ oz. 75c; 1 lb. \$4.50; Powder No. 3—For resistance species, such as evergreens and dormant leafless cuttings, 1 oz. \$1.00; $\frac{1}{2}$ lb. \$4.50; Combination Package, powders Nos. 1, 2 and 3—in carton, 75c. Prices quoted are postpaid.

FRUIT AND NUT TREES

Figs, Grapes, Peaches, Pears, Paper Shell Pecans, Plums and Japanese Persimmons.

We carry a complete line of fruit and nut trees of varieties best adapted to Florida and the West Indies. Our fruit and nut trees are the very best, most dependable, budded, result-producing stocks.

Orders are taken for delivery between December 1 and March 15. As the supply of the most desirable varieties frequently becomes exhausted early in the season, it will behoove our friends to order early, stating when delivery is wanted.

All orders will be shipped direct from the nursery.

For a complete list of varieties and prices see Kilgore's vegetable catalog, or write The Kilgore Seed Company, Plant City, Florida.

RAFFIA

The plain or natural color Raffia comes in 1 lb. hanks. Lb. 45c; 10 lbs. \$4.00; postpaid.

Colored Raffia (Bright Red, Royal Blue, Lavender, Tobacco Brown, Orange, Bottle Green), $\frac{1}{4}$ lb. 35c, postpaid.

Raffia, bleached white, $\frac{1}{4}$ lb. 55c, postpaid.

Raffia Needles, small or large, 2 for 5c, postpaid.

KILGORE'S BRED-RITE VEGETABLE SEEDS

Represent the result of over 25 years of breeding and selection for the development of strains of vegetable seeds especially adapted to growing conditions in Florida and the West Indies. We have varieties especially suited for Florida commercial production, as well as high quality varieties especially adapted for Florida home gardens. For a list of vegetables and complete cultural directions for planting and fertilizing vegetables in Florida and the West Indies, we refer you to "KILGORE'S VEGETABLE SEED CATALOG," which may be obtained free of charge through any of Kilgore's twelve Florida stores, or by writing The Kilgore Seed Company, Plant City, Florida.

ORDER SHEET FOR 1939

THE KILGORE SEED COMPANY

PLANT CITY, FLORIDA

Name.....
 P.O. Box, Street,
 or R.F.D. No.....
 Post Office.....
 County..... State.....
 Ship by P.P. Exp. Frt.
 Exp. or Frt. Office..... Date..... 193.....

AMOUNT ENCLOSED		
Check.....		
Money Order.....		
Cash.....		
Stamps.....		
Total.....		

IMPORTANT! Be sure address and shipping instructions are correct. Please write plainly.

ON ITEMS NOT MARKED POSTPAID BE SURE YOUR REMITTANCE INCLUDES THE NECESSARY POSTAGE

We give no warranty, express or implied, as to description, quality, productiveness or any other matter of any seeds or bulbs we sell, and we will not be responsible for the crop. No reputable seedsman gives any warranty.

We test our seeds for germination before we send them to our customers. We have the fullest confidence in the quality of all the seeds we sell, but we have no control over them after they leave our hands. Satisfactory germination and production are dependent upon many factors other than the quality of the seed, such as weather and soil conditions, methods of planting, cultivating and fertilizing. This is why responsible seedsmen cannot give a warranty.

Tear Off Along This Line

Quantity	ITEMS WANTED	Price	
		Dollars	Cents

We would like to send our catalog to several of your friends and neighbors. There is a space on the reverse side of this sheet provided for this purpose.
PLEASE DO NOT FORGET TO GIVE YOUR NAME AND ADDRESS [SEE OTHER SIDE]

Make Your Home Surroundings More Beautiful

DO IT WITH FLOWERS

*The kiss of the sun for pardon
The song of the birds for mirth,
You are nearer God's heart in a garden
Than anywhere else on earth.*

Plant Strains and Varieties Adapted to Florida

THE KILGORE SEED COMPANY, with general offices and a large mail order department in Plant City, Florida, and with twelve stores serving Florida, and seven agencies in the West Indies, has devoted a great deal of time, effort, and expense in developing, improving and testing types and varieties of flowers especially suited to growing conditions in Florida and the West Indies. This Planting Guide, the only publication of its kind ever published, it being adapted especially to growing conditions in Florida and the West Indies, gives knowledge gained as the result of trials and experiments conducted in Florida by The Kilgore Seed Company over a series of years. It contains a complete list of flowers adapted to Florida and the West Indies, and gives detailed cultural directions for winter and summer growing of flowers in Florida and the West Indies.

Flowers in Bloom Throughout the Year

Make your home surroundings more beautiful. Do it with Kilgore's Bred-Rite Flower Seeds. Nowhere on the face of the earth can flowers be grown in such profusion as in Florida and the West Indies at a time of the year when most of the country is covered with ice and snow. Different kinds of flowers can be grown in Florida every month of the year, certain kinds being adapted for winter blooming, others do best in spring and summer.

Time of Planting

One of the most important things to consider with reference to growing flowers in Florida and the West Indies is *the proper time for planting flower seeds of different kinds*. Some flowers are tender, and are killed by light frosts, while others are hardy, and will grow and bloom through the coldest winters in Florida. In Florida, the tender kinds must be planted during early fall so as to bloom before danger of winter frosts, or in the spring after danger of frost is past. Hardy kinds may be planted in Florida at any time from September to March. All the different kinds of flowers listed in this book are labeled indicating whether they are hardy or tender, the proper time for planting the seeds, and also indicating the approximate time from seed sowing to first blossoms under Florida growing conditions.

Plant Tested, High Quality Seeds

To make certain that all flower seeds sent out by us will give entire satisfaction, we maintain an up-to-date seed testing laboratory where samples of all our flower seeds are tested for germination at frequent intervals. We are confident there are no flower seeds of better quality obtainable anywhere than those we offer in this book. Cost has been a secondary consideration in making our selections; high quality and adaptability to Florida growing conditions have been our first and major considerations.

Flower Planting Guide for Florida



LARKSPUR MIXTURE
(SEE PAGE 13)

SUPERB MIXTURE PETUNIA
(SEE PAGE 16)



POMPON OR LILLIPUT ZINNIA
(SEE PAGE 19)

SALVIA OR SCARLET SAGE
(SEE PAGE 17)

THE KILGORE SEED COMPANY
GENERAL OFFICES & MAIL ORDER DEPARTMENT
PLANT CITY, FLORIDA