

MINISTRY OF THE INTERIOR, EGYPT

---

Department of Public Health

---

Endemic Diseases Section

---

# The Seventh Annual Report 1934

---



Govt. Press, Bulâq, Cairo, 1935

---

GOVERNMENT PUBLICATIONS are on sale at the "Sale Room,"  
Ministry of Finance. Correspondence relating to these Publi-  
cations should be addressed to the "PUBLICATIONS OFFICE,"  
Government Press, Bulâq, Cairo.

Price - - - - - P.T. 15



22501560110

MINISTRY OF THE INTERIOR, EGYPT

---

Department of Public Health

---

Endemic Diseases Section

---

# The Seventh Annual Report 1934

---



Govt. Press, Bulàq, Cairo, 1935

---

GOVERNMENT PUBLICATIONS are on sale at the "Sale Room,"  
Ministry of Finance. Correspondence relating to these Publi-  
cations should be addressed to the "PUBLICATIONS OFFICE,"  
Government Press, Bulàq, Cairo.

Price - - - - - P.T. 15

PROPERTY
+
Ans Dep
WC 28
.HEB
e32
1934

The Journal of the  
1934



# CONTENTS



## I.—ANKYLOSTOMA AND BILHARZIA BRANCH

	PAGE.
Propaganda and cinematograph pictures ... ..	1
Number of patients treated ... ..	1
Private practice by medical officers ... ..	1
Sedimentation test ... ..	1

## II.—TUBERCULOSIS BRANCH

New units inaugurated ... ..	2
Fouad Hospital-Sanatorium, Helwân ... ..	2
Abbasîya Tuberculosis Hospital ... ..	2
Attendance of patients ... ..	2
Tuberculin ... ..	2
Diluting tuberculin ... ..	3
Solganol B ... ..	3
Sanocrysin ... ..	3
Pneumothorax ... ..	3
Mantoux test ... ..	4
House visits ... ..	4
Other prophylactic measures ... ..	4

## III.—LEPROSY BRANCH

Attendance of patients ... ..	5
Abu-Zaabal Leper Colony ... ..	5
Cairo Leprosy Hospital ... ..	5
Increasing dose of hydnocarpus oil ... ..	5
Drugs used in the treatment of leprosy... ..	5
Economy ... ..	5

## Statistical Tables

### TABLE.

1.—Graph showing the monthly number of new patients attending the ank. and bilh. units.	
2.—Graph showing the monthly number of new patients attending the leprosy units.	
3.—Graph showing the monthly number of new patients attending the chest diseases dispensaries.	
4.—Graph showing the monthly number of tuberculosis positive cases in the chest diseases dispensaries.	
5.—Graph showing number of tuberculosis positive cases according to ages.	
6.—Monthly number of patients attending the various branches of the Section ... ..	7
7.—Distribution of infection among the new patients attending the various branches of the Section ... ..	8
8.—Ankylostoma and bilharzia cases ... ..	9
9.—Annual statistics of lepers ... ..	12,13
10.—Return of pulmonary tuberculosis cases ... ..	15
11.—Detailed account of expenses ... ..	17,18
12.—Number of units attached to the various branches of the Section from 1919 to 1934 ... ..	18
13.—Number of new patients attending units of the various branches of the Section during the last five years ... ..	19
14.—Localities of the anthelmintic travelling units during the year 1934 ... ..	20,21
15.—Number of students examined and treated by the ank. units of the Section during the year 1934 ... ..	21
16.—General return to show admissions and discharges during 1934 at Fouad Sanatorium, Helwân ... ..	22
17.—Return showing admissions (new) during 1934 at Fouad Sanatorium, Helwân ... ..	24,25
18.—The work of the laboratory during 1934 at Fouad Sanatorium, Helwân ... ..	26
19.—The work of the X-ray Section at Fouad Sanatorium, Helwân ... ..	27
20.—Return of main treatments applied to patients discharged during 1934 at Fouad Sanatorium Helwân ... ..	28
21.—Statistics showing number of new and old patients who attend Old Cairo Dispensary attached to Helwân Sanatorium ... ..	29
22.—A detailed account of receipts, 1934 at Fouad Sanatorium Helwân ... ..	30
23.—List of expenditure of Fouad Sanatorium, Helwân ... ..	31



Digitized by the Internet Archive  
in 2019 with funding from  
Wellcome Library

<https://archive.org/details/b31497202>

MINISTRY OF THE INTERIOR, EGYPT

---

Department of Public Health

---

The Seventh Annual Report of the Endemic Diseases  
Section for the Year 1934

---

I.—ANKYLOSTOMA AND BILHARZIA BRANCH

---

Propaganda

Propaganda by lectures illustrated with coloured pictures was carried out during the year in all Ankylostoma and Bilharzia units, describing the mode of origin and method of spread of ankylostomiasis and bilharziasis, as well as the means to avoid infection.

Cinematograph pictures were also shown in various units, by means of a motor vehicle conveying the apparatus, which was kindly provided by the Propaganda Branch of Section I.

Number of Patients Treated

The total number of patients seeking treatment during the present year was 665,799, compared with 720,431 during the previous year. The number of patients treated for bilharziasis was 311,067, the number of injections given being 2,541,201, while the number of new patients treated for helminthiasis was 203,826.

The falling off in the attendance of patients during the current year was due to :—

(a) The excessive flood in the Nile, necessitating the corvée or forced labour of the fellahin to preserve the river embankments, and thus prevent the general flooding of the country.

(b) The infection of the cotton crop with cotton worm and the occupation of the fellahin in eliminating the pest.

Private Practice by Medical Officers

During the year, private practice by the medical officers of the Section was entirely forbidden in order that the work might benefit from the whole time attention of the medical staff.

Sedimentation Test

The sedimentation method for the detection of intestinal bilharziasis which was introduced during the previous year, continued to be used with highly satisfactory results.

## II.—TUBERCULOSIS BRANCH

### New Units Inaugurated

During the year, two new units were budgeted for, but owing to various circumstances they were not inaugurated. It is anticipated that they will be inaugurated early in 1935. One of these units is to be set up in the Khalifa Quarter of Cairo and the other in Asyût Town, Asyût Province, Upper Egypt. The necessary equipment for both units has been already arranged for.

### Fouad Hospital-Sanatorium, Helwân

The Hospital-Sanatorium at Helwân, near Cairo, has been attached to the Department of Public Health and placed for administrative purposes under the Endemic Diseases Section. The Sanatorium when first attached to the Department contained 288 beds only, but, by utilising all available space, accommodation has already been increased up to 400 beds, and it is hoped that if money is available the number of beds will be increased annually by 50-100 up to 1,000 beds, through the provision of dormitory blocks for the accommodation of advanced cases of tuberculosis, plans for which are already in existence.

At the beginning of the year under review there were 262 in-patients at the Sanatorium. During the year, 979 patients were admitted and 897 were discharged, the number of inmates on December 31, 1934 being 344. Further detailed statistical tables regarding this Sanatorium are given at the end of the report.

### The New Tuberculosis Hospital at Abbassia

The wards of the new Tuberculosis Hospital-Sanatorium at Abbassîya are now almost complete, and plans and estimates for the staff quarters and administrative blocks have been forwarded to the Building Department for construction. It is also hoped that as money becomes available, an expansion will gradually be made of this hospital-sanatorium up to 1,000 beds by the construction of blocks of wards, each containing 50-100 beds.

### Attendance of Patients

The number of patients seeking treatment during the year at the chest diseases units of the Section was 33,461, of whom 1,563 were found to be suffering from tuberculosis. Of these, 1,057 had tubercle bacilli in their sputum; 506 were diagnosed positive by X-Rays. 1,391 were kept under observation. The remainder were found to be suffering from other diseases.

The great increase in the number of patients applying for treatment during the year is due to the fact that all cases applying for treatment at the chest diseases dispensaries receive primary aid there where possible, and are then referred to general or special hospitals for further treatment.

All tuberculous patients are provided with liberal supplies of cod liver oil and appropriate cough mixtures. The main lines of treatment are by Tuberculin (Bacillary Emulsion), Solganol B. Oleosum, and Pneumothorax.

### Tuberculin

Of 611 cases treated by tuberculin 187, (30.6 per cent) increased in weight, 335 (54.8 per cent) remained stationary and 89 (14.6 per cent) deteriorated, treatment in the last group being stopped when it became evident that tuberculin was doing no good. The Section is of the considered opinion that tuberculin constitutes a valuable treatment in some cases of pulmonary tuberculosis.

Detailed particulars of treatment by tuberculin are given in the accompanying Appendix.



### Diluting Tuberculin

A modified account of the method of diluting tuberculin referred to in the Annual Report of 1931, is given herewith from "Tubercle," April 1932 :—

Below is described the method of dilution of tuberculin (B.E.) employed in the chest diseases dispensaries of the Department of Public Health, Egypt. The method is simple, expeditious and inexpensive, and can be utilised for making any desired dilution of any kind of tuberculin. The outfit required consists of: (a) one 20-c.c. sterile beaker; (b) one 50-c.c. sterile Erlenmeyer flask (or beaker); (c) one 1-c.c. sterile glass tuberculin syringe divided into 0.01 c.c. graduations.

The details are as follows :—

(1) Into the beaker is placed 10 c.c. and into the flask 45 c.c. of cooled sterile normal salt solution (to which may be added 0.5 per cent phenol, if desired).

(2) By means of the tuberculin syringe, 1/10 c.c. tuberculin (B.E.) is withdrawn from the stock bottle with due antiseptic precautions and added to the salt solution in the beaker. The emulsion is thoroughly mixed.

(3) Five c.c. of emulsion from the beaker are then mixed with the 45 c.c. of normal salt solution in the flask.

The dilutions of tuberculin in the beaker and in the flask are shown in the table below:—

Beaker	Erlenmeyer Flask
1 c.c. = 1/100 c.c. B.E.	1 c.c. = 1/1,000 c.c. B.E.
1/2 " = 1/200 " "	1/2 " = 1/2,000 " "
1/4 " = 1/400 " "	1/4 " = 1/4,000 " "
1/10 " = 1/1,000 " "	1/10 " = 1/10,000 " "
1/20 " = 1/2,000 " "	1/20 " = 1/20,000 " "
2 " = 1/50 " "	2 " = 1/500 " "
4 " = 1/25 " "	4 " = 1/250 " "

Dilutions of 1/2, 1/5, or 1/10 these strengths can be made by withdrawing 1/20, 1/50, or 1/100 c.c. instead of 1/10 c.c. of tuberculin from the stock bottle if so desired. Doses of 1/100 c.c. up to 1 c.c. can be measured directly from the stock bottle by means of the tuberculin syringe.

The dilutions of tuberculin should be freshly prepared, and the quantity remaining over each day discarded.

### Solganol B

Gold salts have also been used in the form of Solganol B. Oleosum, as being more suitable for use in the out-patient dispensaries than salts in aqueous solution which requires to be given intravenously, but the number of cases treated by gold in this way is too small for the Section to be able to pronounce a considered opinion at present on the subject. There is no doubt, however, that individual cases frequently benefit greatly by this treatment.

### Sanocrysin

Sanocrysin was also used in the treatment of tuberculosis in some of the chest diseases dispensaries, but owing to the failure of patients to attend regularly for treatment the results were inconclusive.

### Pneumothorax

867 cases of Pneumothorax were refilled at the chest diseases dispensaries during the year with satisfactory results, and 53 cases of Pneumothorax were induced.

### Mantoux Test

Most children applying for treatment have the Mantoux test carried out. If possible they are X-rayed and put under observation.

### House Visits

3,104 home visits were paid by the health visitors attached to the chest diseases dispensaries during the year, and it is believed that these visits are of considerable value in preventing the spread of the disease within the infected houses. The isolation of the patient in a separate bed, and where possible in a separate room is stressed, and advice given regarding suitable food, etc., etc.

### Other Prophylactic Measures

Through the co-operation of the Health Inspectorates of Cairo City and the Provinces, notifications of those dying of tuberculosis are now sent to the Endemic Diseases Section, and every effort is made by the various dispensaries to establish contact with the families of the deceased, in order to prevent the spread of the disease within the family.

When it is found by any dispensary that a tuberculous patient follows a trade such as milk, or food vendor which is liable to convey the disease to others, every endeavour is made to induce the patient to hand over the conduct of his business to a non-tuberculous member of the same family.

As private practitioners in Egypt for various reasons still refrain from notifying pulmonary tuberculosis, the chest diseases dispensaries have become the great instrument for the notification of tuberculosis in Egypt.

The disinfection of houses is carried out by the Public Health Inspectors on notification by the chest diseases dispensaries, either on the change of residence or death of a patient, or at other times at the patient's own request.

Tuberculosis in Egypt is as elsewhere, a disease of the slums, and until money is available for the abolition of slums and the construction of sanitary dwellings, the disease cannot be eradicated.

### III.—LEPROSY BRANCH

---

#### Attendance of Patients

The number of new patients seeking treatment during the year was 1,273, the number found positive for leprosy being 618.

The total number of patients on the registers of leprosy units has been diminishing. The reasons for this diminution are:—

The treatment of leprosy being of a prolonged character, many lepers who do not recover during the first year of treatment, discontinue attending the units. This phenomenon is observed throughout the world.

Moreover, when lepers not yet under treatment, observe that the treatment of leprosy in general is prolonged, they refrain from presenting themselves for treatment. It is hoped, however, with more intensive treatment which is now being adopted, together with the propaganda made by the Health Authorities throughout the country, that a considerable improvement in attendance may be secured.

The total number of patients applying for treatment at the leprosy units since the inauguration of the leprosy branch is 7,080. Of this number, 2,780 were positive.

#### Abu Zaabal Leper Colony

On January 1, 1935, there were 151 male lepers accommodated in Abu Zaabal Leper Colony, of whom 30 were accommodated temporarily in tents. It has been proposed by the Section to build four additional dormitory blocks together with a separate bath-room and sanitary block, the estimated cost of which is L.E. 20,000, and this has been applied for in the budgetary proposals of 1935.

The construction of staff-quarters at Abu Zaabal Leper Colony has now been completed, and the majority of the staff are now in residence at the colony.

#### Cairo Leprosy Hospital

On January 1, 1935, there were 57 female lepers accommodated in Cairo Leprosy Hospital. Additional accommodation exists for more patients, when money becomes available.

#### Increasing Dose of Hydnocarpus Oil

For the general convenience of patients in Cairo Leprosy Hospital, the dose of hydnocarpus oil was increased from 2 c.c. twice a week to 5 c.c. once a week with satisfactory results.

#### Drugs used in the Treatment of Leprosy

Hydnocarpus (*Anthelmintica*) oil from Siam is now used exclusively in the units of the Section as being both cheap and satisfactory. The use of ethylesters has been abandoned for reasons of economy.

Ethylesters were formerly used in the cold weather on account of their fluidity, hydnocarpus oil being solid at this period of the year. In order to obviate this difficulty, instructions were issued to all the units to heat the bottle of oil in a water-bath to blood heat, and by this expedient the oil can be used throughout the year.

#### Economy

Hydnocarpus oil was previously purchased by the Section already sterilised in bottles, but during the last two years arrangements have been made by the Section to purchase the oil in bulk in drums from Siam, at about one third the price in bottles. The oil is now sterilised in Abu Zaabal Leper Colony, and there filled into bottles for distribution to all leprosy units.

J. WALKER TOMB

*Director, Endemic Diseases Section.*



TABLE NO. 6.—MONTHLY NUMBER OF PATIENTS WHO ATTENDED THE VARIOUS BRANCHES  
OF THE ENDEMIC DISEASES SECTION (DURING THE YEAR 1934)

1.—*Ankylostoma and Bilharzia Units*

Month	Number of Patients
January ... ..	24,923
February ... ..	36,435
March ... ..	38,188
April ... ..	75,792
May ... ..	66,539
June ... ..	67,835
July ... ..	81,668
August ... ..	113,865
September ... ..	50,863
October ... ..	43,799
November ... ..	39,865
December ... ..	26,027
Total Number ...	665,799

2.—*Chest Diseases Dispensaries*

Month	Number of Patients
January ... ..	1,984
February ... ..	2,469
March ... ..	2,461
April ... ..	3,380
May ... ..	3,481
June ... ..	2,790
July ... ..	2,728
August ... ..	2,755
September ... ..	2,723
October ... ..	2,735
November ... ..	2,749
December ... ..	3,206
Total Number ...	33,461

3.—*Leprosy Units*

Month	Number of Patients
January ... ..	58
February ... ..	73
March ... ..	110
April ... ..	173
May ... ..	136
June ... ..	128
July ... ..	123
August ... ..	173
September ... ..	96
October ... ..	85
November ... ..	61
December ... ..	57
Total Number ...	1,273

TABLE NO. 7.—DISTRIBUTION OF INFECTION AMONG THE NEW PATIENTS ATTENDING THE  
VARIOUS BRANCHES OF THE ENDEMIC DISEASES SECTION DURING THE YEAR 1934

	Number	Percentage
		%
<i>1.—Ankylostoma and Bilharzia Units.</i>		
(a) Number of new patients examined for urinary bilharziasis ... ..	655,606	
Positive for urinary bilharziasis ... ..	389,176	59,36
(b) Number of new patients examined for intestinal bilharziasis ...	606,960	
Positive for bilharzia mansoni ... ..	99,880	16,45
Positive for bilharzia hæmatobium ... ..	10,751	1,77
Positive for amœbic dysentery ... ..	3,354	0,55
(c) Total cases of bilharziasis ... ..	438,844	65,91*
(d) Number of new patients examined for ankylostomiasis... ..	606,960	91,16
Positive for ankylostoma ... ..	171,550	28,26
Positive for ascaris ... ..	313,897	51,71
Positive for other intestinal parasites ... ..	62,516	10,29
(e) Positive for urine and stools parasites ... ..	570,974	85,75
<i>2.—Chest Diseases Units.</i>		
Number of new patients ... ..	33,461	
Positive for tuberculosis ... ..	1,563	4,67
<i>3.—Leprosy Units.</i>		
Number of new patients ... ..	1,273	
Positive for leprosy ... ..	618	48,54

\* The percentage given in para (c) above is calculated in relation to number of new patients (665,799).







TABLE No. 9

Annual Statistics of Lepers, Year 1934

---

TABLE No. 9.—ANNUAL STATISTICS

Unit	Number of Patients			General Remarks									How Infection was						
	New Patients	Negative to Leprosy	Positive to Leprosy	Males	Females	Married	Single	Egyptians	Foreigners	Moslem	Coptic	Other Religions	Denies infection	Admits infection	Foreign contact	Family contact	Father only	Mother only	Parents
Abu Zaabal .	100	—	100	100	—	30	70	100	—	96	4	—	46	54	36	18	1	—	—
Cairo ...	353	169	187	133	54	87	100	187	—	180	7	—	132	55	17	38	9	4	—
Zagazig ...	307	206	41	33	8	22	19	41	—	40	1	—	22	19	8	11	—	1	—
Souhâg ...	159	46	113	97	16	67	46	113	—	88	25	—	95	18	8	9	1	—	—
Tanta ...	251	163	88	68	20	65	23	88	—	78	—	—	58	30	17	13	2	—	—
Minya ...	100	11	89	69	20	45	44	89	—	51	38	—	73	16	73	16	1	—	—
<b>TOTAL ...</b>	<b>1273</b>	<b>655</b>	<b>618</b>	<b>500</b>	<b>118</b>	<b>316</b>	<b>302</b>	<b>618</b>	<b>—</b>	<b>543</b>	<b>75</b>	<b>—</b>	<b>426</b>	<b>192</b>	<b>159</b>	<b>105</b>	<b>14</b>	<b>5</b>	<b>—</b>

Unit	Duration of Disease							Laboratory Findings										No. of Patients since Inauguration						
	1 Year	2 Years	3-5	6-10	11-15	16-20	From 21 and upwards	Neg. Bc.	Pos. Bc.	Nose only	Skin only	Nose and Skin	Pos. Wr.	Neg. Wr.	Pos. Kh.	Neg. Kh.	Bilh.	Bar.	Alb.	General No.	No. of Negative	No. of Positive	No. of re-admitted	true No. of positive
Abu Zaabal .	60	13	38	36	4	1	2	10	90	5	2	83	36	53	—	—	54	42	50	185	—	185	—	—
Cairo ...	39	44	67	27	5	5	—	41	146	31	6	109	47	105	3	—	21	22	24	2585	1443	1142	—	—
Zagazig ...	2	4	16	12	2	1	4	9	32	2	1	23	—	—	—	—	6	4	5	1212	916	296	—	—
Souhâg ...	3	6	53	32	8	8	3	12	99	53	1	45	—	—	—	—	—	—	—	1064	488	576	—	—
Tanta ...	26	17	32	10	1	1	1	52	36	8	3	25	—	—	—	—	—	—	—	1141	617	524	—	—
Minya ...	21	28	21	14	2	—	3	49	40	—	1	39	—	—	—	—	7	3	7	893	539	354	—	—
<b>TOTAL ...</b>	<b>151</b>	<b>112</b>	<b>227</b>	<b>131</b>	<b>22</b>	<b>16</b>	<b>13</b>	<b>173</b>	<b>443</b>	<b>105</b>	<b>14</b>	<b>324</b>	<b>83</b>	<b>158</b>	<b>3</b>	<b>—</b>	<b>88</b>	<b>71</b>	<b>86</b>	<b>7080</b>	<b>4003</b>	<b>3077</b>	<b>297</b>	<b>2780</b>

Unit	Cairo Gov.		Alex. Gov.		Damietta Gov.		Canal Gov.		Suez Gov.		Beheira Prov.		Gharbiya Prov.		Menoufiya Prov.		Dakahliya Prov.		Sharkiya Prov.	
	Birth	Residence	Birth	Residence	Birth	Residence	Birth	Residence	Birth	Residence	Birth	Residence	Birth	Residence	Birth	Residence	Birth	Residence	Birth	Residence
Abu Zaabal .	1	7	1	2	5	5	3	3	—	1	1	1	8	8	13	12	16	15	—	—
Cairo ...	10	57	1	—	3	1	2	1	—	—	2	2	10	7	28	18	15	10	4	2
Zagazig ...	—	—	—	—	—	—	1	1	—	—	—	—	—	—	—	—	19	14	25	26
Souhâg ...	—	—	—	—	—	—	—	—	—	—	—	—	—	—	—	—	—	—	—	—
Tanta ...	—	—	—	—	—	—	—	—	—	—	7	7	45	45	18	18	18	18	—	—
Minya ...	—	—	—	—	—	—	—	—	—	—	—	—	—	—	—	—	—	—	—	—
<b>TOTAL ...</b>	<b>11</b>	<b>64</b>	<b>2</b>	<b>2</b>	<b>8</b>	<b>6</b>	<b>6</b>	<b>5</b>	<b>—</b>	<b>1</b>	<b>10</b>	<b>10</b>	<b>63</b>	<b>60</b>	<b>59</b>	<b>48</b>	<b>68</b>	<b>57</b>	<b>29</b>	<b>28</b>

(\*) Some patients were admitted in more than one clinic. Control is made at Abu Zaabal Leprosy Colony.

OF LEPERS, DURING THE YEAR 1934

conveyed					Kind of Disease			Age of Patient at Admittance							Age on Appearance of Disease												
Husband	Wife	Sons	Brothers	Relations	Skin	Nurve	Mixed	1-10	11-20	21-30	31-40	41-50	51-60	From 61 and upwards	1-5	6-10	11-15	16-20	21-25	26-30	31-35	36-40	41-45	46-50	51-55	56-60	From 61 and upwards
—	—	1	8	10	17	14	69	—	30	42	16	9	3	—	1	7	22	24	17	10	10	4	2	2	1	—	—
—	—	2	12	11	55	77	55	15	52	67	34	12	5	2	7	23	30	35	29	21	20	11	2	2	3	3	1
—	—	—	8	2	6	11	24	3	13	10	8	6	1	—	1	9	7	7	8	3	4	—	1	—	—	1	—
—	—	2	4	2	16	5	92	2	19	32	32	14	8	6	2	10	19	10	18	16	12	14	5	2	2	2	2
—	—	—	3	8	17	30	41	6	27	39	13	3	—	—	4	4	18	29	8	15	5	4	—	1	—	—	—
—	—	—	5	10	—	48	41	3	27	24	13	17	11	4	—	7	14	16	11	9	6	5	7	3	3	5	3
—	—	5	40	43	111	185	322	29	168	214	116	61	28	12	15	60	110	121	91	74	57	38	17	10	9	11	6

Number of Patients				Details of Special Treatment										General Treatment				
Number of Attendance	Number of Absence	Number of Pat. treated	Number of Dressings	Oil.		H.O.		E.C.C.O.		Anti-Leprone		Youdor Potas.		Other Preparation		Syphilis	Bilharz.	Parasites.
				No.	Q.	No.	Q.	No.	Q.	No.	Q.	No.	Q.					
12,373	1,365	11,008	51,538	7,349	33,033	1,927	2,619	626	781	14	37	1,106	3,250	—	—	—	—	—
2,584	2,587	13,194	10,748	7,633	34,791	4,456	12,744	—	—	17	170	793	1,630	—	181	—	—	—
857	1,508	5,594	4,550	4,983	10,100	580	1,141	—	—	—	—	—	—	4	27	—	—	—
2,666	3,797	15,431	4,727	14,834	28,042	144	287	438	276	667	974 $\frac{1}{3}$	—	—	—	—	—	—	—
2,341	2,375	12,977	9,535	9,749	23,493	1,722	2,210	1,504	1,639	—	—	—	—	—	—	—	—	—
1,806	2,983	8,749	5,427	7,334	24,763	717	1,040	698	698	—	—	—	—	—	43	—	—	1
22,627	14,615	66,953	86,525	51,882	154,222	9,546	7,041	3,266	3,394	698	1,181 $\frac{1}{3}$	1,899	4,880	4	251	—	—	1

Kaliubiya Prov.		Giza Prov.		Beni Suéf Prov.		Fayoûm Prov.		Minya Prov.		Assiût Prov.		Girga Prov.		Qena Prov.		Aswân Prov.		Sinai Gov.		West Sahara Gov.		South Sahara Gov.		Abroad	In-patients
Birth	Residence	Birth	Residence	Birth	Residence	Birth	Residence	Birth	Residence	Birth	Residence	Birth	Residence	Birth	Residence	Birth	Residence	Birth	Residence	Birth	Residence	Birth	Residence		
16	15	10	9	10	10	2	2	1	—	5	4	5	5	2	1	1	—	—	—	—	—	—	—	—	151
31	30	43	44	9	8	—	—	2	2	11	3	3	—	10	1	2	1	—	—	1	—	—	—	—	57
—	—	—	—	—	—	—	—	—	—	—	—	—	—	1	—	—	—	—	—	—	—	—	—	—	—
—	—	—	—	—	—	—	—	—	—	11	11	94	94	8	8	—	—	—	—	—	—	—	—	—	—
—	—	—	—	—	—	—	—	—	—	—	—	—	—	—	—	—	—	—	—	—	—	—	—	—	—
—	—	—	—	1	—	—	—	68	89	18	—	2	—	—	—	—	—	—	—	—	—	—	—	—	9
47	45	53	53	20	18	2	2	71	91	45	18	104	99	21	10	3	1	—	—	1	—	—	—	—	217



TABLE NO. 10.—Return of Pulmonary Tuberculosis treated in Chest Diseases Dispensaries During the year 1934

Unit	Number of New Cases Seeking treatment	Number of New Patients suffering from Tuberculosis																												Old Patients Seeking Treatment												Result of Treatment of T.B.		Number of Deaths														
		Total	Under 5 Years		From 5-10 Years		From 10-15 Years		From 15-20 Years		From 20-25 Years		From 25-30 Years		From 30-35 Years		From 35-40 Years		From 40-45 Years		From 45-50 Years		From 50-55 Years		From 55-60 Years		Over 60 Years		Number of Tuberculin Injections	Merchants	Officials	Workmen	Peasants	Students	Number Occupation	Bact. Exam.	X-Ray Exam.	Hamoptysis	Cases under Observation	Home Visits		Total.	Attendance Of Old T.B. Patients				Contacts		Other Chest Diseases		Re. Bact. Examination		Better	Stationary	Worse			
			M.		F.		M.		F.		M.		F.		M.		F.		M.		F.		M.		F.		M.													F.			M.		F.		M.		F.		Neg.—					Pos.—		
			M.	F.	M.	F.	M.	F.	M.	F.	M.	F.	M.	F.	M.	F.	M.	F.	M.	F.	M.	F.	M.	F.	M.	F.	M.	F.												M.	F.		M.		F.	M.	F.	M.	F.	M.	F.							
Sabtiya ... ..	10,073	364	—	—	12	9	8	17	27	17	59	34	48	21	32	13	15	14	14	5	9	1	5	2	1	—	1	—	2944	624	14	34	145	12	18	141	254	110	35	1049	115	886	13,943	1,156	592	753	797	300	389	4,698	5,258	60	19	47	76	14	97	
Mobtadayân ... ..	11,830	690	1	4	16	18	17	18	86	42	112	45	71	47	62	22	33	16	20	7	12	10	11	8	6	1	5	—	3063	714	32	46	245	59	41	267	389	301	62	217	131	1367	21,953	1,432	923	1,223	1,288	242	363	7,595	9,086	97	24	108	117	33	55	
Mansôûra ... ..	5,199	285	—	—	—	—	2	6	15	12	58	12	52	31	22	9	11	9	13	13	4	1	4	4	1	3	2	1	1398	—	12	12	80	82	10	89	239	46	173	125	139	497	11,276	1,957	932	282	131	903	1,034	3,218	3,762	668	521	20	39	5	30	
Tanta ... ..	6,359	224	—	—	1	—	6	3	20	6	12	9	34	23	26	13	16	15	7	8	7	3	6	5	3	—	1	—	1920	—	2	3	41	66	13	99	175	49	49	—	250	354	10,907	646	348	228	238	94	117	4,428	4,400	72	—	43	141	28	21	
<b>TOTAL ... ..</b>	<b>33,461</b>	<b>1563</b>	<b>1</b>	<b>4</b>	<b>29</b>	<b>27</b>	<b>33</b>	<b>44</b>	<b>148</b>	<b>77</b>	<b>241</b>	<b>100</b>	<b>205</b>	<b>122</b>	<b>142</b>	<b>57</b>	<b>75</b>	<b>54</b>	<b>54</b>	<b>33</b>	<b>32</b>	<b>15</b>	<b>23</b>	<b>19</b>	<b>11</b>	<b>4</b>	<b>9</b>	<b>1</b>	<b>9325</b>	<b>1338</b>	<b>60</b>	<b>95</b>	<b>511</b>	<b>219</b>	<b>82</b>	<b>596</b>	<b>1057</b>	<b>506</b>	<b>319</b>	<b>1391</b>	<b>635</b>	<b>3104</b>	<b>58,079</b>	<b>5,191</b>	<b>2,795</b>	<b>2,486</b>	<b>2,454</b>	<b>1,539</b>	<b>1,903</b>	<b>19,939</b>	<b>22,506</b>	<b>897</b>	<b>564</b>	<b>218</b>	<b>373</b>	<b>80</b>	<b>203</b>	



TABLE No. 11

DETAILED ACCOUNT OF THE EXPENSES OF THE ENDEMIC DISEASES SECTION IN THE YEAR 1934

Units	Salaries	Equipment, Instruments and Drugs	Rent, Water, Light and Sewage	Transport	Miscellaneous Expenses	Total
	L.E.	L.E.	L.E.	L.E.	L.E.	L.E.
Ankylostoma Hospital, Cairo ... ..	1,066	197	66	13	38	1,380
„ „ Kaliûb ... ..	627	140	30	—	9	806
„ „ Mansoûra ... ..	583	127	47	4	37	798
„ „ Benha ... ..	743	106	35	—	75	959
„ „ Tanta ... ..	722	158	82	1	26	989
„ „ Zagazig ... ..	540	177	28	8	19	772
Travelling Ankylostoma Hospital No. 1	505	175	32	—	66	778
„ „ „ „ 2	570	95	11	—	63	739
„ „ „ „ 3	532	140	38	46	19	775
„ „ „ „ 4	451	217	22	—	46	736
„ „ „ „ 5	510	108	24	10	55	707
„ „ „ „ 6	635	204	31	10	68	948
„ „ „ „ 7	477	107	22	—	54	660
„ „ „ „ 8	522	120	12	13	61	728
„ „ „ „ 9	555	271	20	12	67	925
„ „ „ „ 10	505	57	16	2	57	637
„ „ „ „ 11	513	96	27	8	57	701
„ „ „ „ 12	470	47	—	1	1	519
„ „ „ „ 13	436	94	19	24	24	597
„ „ „ „ 14	404	131	26	27	48	636
„ „ „ „ 15	465	97	9	1	64	636
„ „ „ „ 16	476	50	19	7	69	621
„ „ „ „ 17	472	180	34	1	59	746
„ „ „ „ 18	466	79	14	6	65	630
„ „ „ „ 19	502	53	—	1	8	564
„ „ „ „ 20	728	107	34	13	5	887
„ „ „ „ 21	468	174	16	—	67	725
„ „ „ „ 22	551	200	25	17	75	868
„ „ „ „ 23	527	214	19	11	67	838
„ „ „ „ 24	521	223	33	20	15	812
„ „ „ „ 25	488	167	36	9	66	766
„ „ „ „ 26	553	32	12	3	71	671
„ „ „ „ 27	610	77	48	3	14	752
„ „ „ „ 28	479	53	22	10	12	576
Travelling Ankylostoma Hospital, Menu- fiya ... ..	511	28	—	—	13	552
Travelling Ankylostoma Hospital, Qena	470	68	—	—	7	545
Travelling Ankylostoma Hospital, Shar- kiya ... ..	525	62	11	—	4	602
Travelling Ankylostoma Hospital, Da- kahliya ... ..	541	219	6	19	44	829
Ankylostoma School Clinic No. 1... ..	580	126	3	13	17	739
„ „ „ „ 2... ..	454	134	4	6	60	658
„ „ „ „ 3... ..	543	313	16	6	82	960
„ „ „ „ 4... ..	532	173	18	7	16	746
„ „ „ „ 5... ..	455	146	—	10	20	631
„ „ „ „ 6... ..	194	26	—	10	31	261
„ „ „ „ 7... ..	436	243	27	1	60	767
„ „ „ „ 8... ..	477	188	3	7	59	734
„ „ „ „ 9... ..	498	111	1	—	37	647
„ „ „ „ 10... ..	551	106	10	5	66	738
„ „ „ „ 11... ..	484	—	15	9	47	555
„ „ „ „ 12... ..	423	84	17	10	50	584
Ankylostoma Annex, Alexandria ... ..	395	—	—	—	—	395
„ „ Mit Ghamr ... ..	515	—	—	13	—	528
„ „ Fikriya ... ..	520	217	—	—	5	742
„ „ Tant El Ghizira ... ..	449	300	8	10	25	792
„ „ Mataria Dispensary	144	19	—	—	2	165

Table No. 11 (contd.)

Units	Salaries	Equipment, Instruments and Drugs	Rent, Water, Light and Sewage	Transport	Miscellaneous Expenses	Total
Chest Diseases Dispensary Sabtiya ...	862	394	158	17	8	1,379
„ „ „ Mobtadyân	861	551	247	40	8	1,707
„ „ „ Mansoûra ...	671	280	134	3	21	1,109
„ „ „ Tanta ...	563	311	116	—	22	1,012
Leprosy Colony, Abu Zaabal ... ..	2,062	1,545	—	—	1,787	5,394
„ Hospital, Cairo ... ..	1,435	394	193	4	515	2,541
„ Clinic, Zagazig ... ..	649	111	23	—	61	844
„ „ Tanta ... ..	584	161	42	—	50	837
„ „ Souhâg ... ..	528	85	30	20	92	755
„ „ Minya ... ..	603	216	37	15	25	896
TOTAL ... ..	37,127	11,034	2,028	506	4,781	55,526

TABLE No. 12

NUMBER OF THE VARIOUS UNITS ATTACHED TO THE ENDEMIC DISEASES  
SECTION (FROM 1919 TO 1934)

Year	Total Number of Units	Units in each Branch Separately				Remarks
		Ankylostoma and Bilharzia	Chest Diseases Dispensaries	T.B. Sanat.	Leprosy Units	
1919 ... ..	1	1	—	—	—	
1920 ... ..	4	4	—	—	—	
1921 ... ..	5	5	—	—	—	
1922 ... ..	6	6	—	—	—	
1923 ... ..	6	6	—	—	—	
1924 ... ..	6	6	—	—	—	
1925 ... ..	12	12	—	—	—	
1926 ... ..	18	18	—	—	—	
1927 ... ..	33	33	—	—	—	
1928 ... ..	53	53	—	—	—	
1929 ... ..	58	55	2	—	1	Section established.
1930 ... ..	63	57	3	—	3	
1931 ... ..	64	56 <sup>(1)</sup>	3	—	5	
1932 ... ..	64	56	3	—	5 <sup>(2)</sup>	
1933 ... ..	66	56	4	—	6 <sup>(3)</sup>	
1934 ... ..	67	56	4	1 <sup>(4)</sup>	6	

N.B. :—

- (1) The Ankylostoma Annex, at Esna was abolished.
- (2) In addition to this number, four additional leprosy sub-clinics were inaugurated and attached to these clinics.
- (3) In addition to this number, four additional leprosy sub-clinics are functioning under control of these clinics.
- (4) Fouad Sanatorium Helwân has been attached to the Endemic Diseases Section in September 1934



TABLE No. 13

NUMBER OF NEW PATIENTS ATTENDING UNITS OF THE VARIOUS BRANCHES OF THE SECTION  
DURING THE LAST FIVE YEARS

I.—ANKYLOSTOMA AND BILHARZIA UNITS

Year	Number of New Patients
1930... ..	748,082
1931... ..	664,303
1932... ..	627,172
1933... ..	720,431
1934... ..	665,799

II.—CHEST DISEASES UNITS

Year	Number of New Patients
1930... ..	7,750
1931... ..	22,014
1932... ..	20,519
1933... ..	24,664
1934... ..	33,461

III.—LEPROSY UNITS

Year	Number of New Patients
1930... ..	1,015
1931... ..	1,472
1932... ..	1,287
1933... ..	1,639
1934... ..	1,273

TABLE No. 14

LOCALITIES OF THE ANTHELMINTIC TRAVELLING  
UNITS DURING THE YEAR 1934

Unit	Locality	Dates	
		From	To
Ankylostoma Hospital No. 1...	Damanhûr ... ..	1- 1-1934	31-12-1934
„ „ 2...	Beni Suêf ... ..	1- 1-1934	31-12-1934
„ „ 3...	El Manzala ... ..	1- 1-1934	25- 4-1934
	El Kordy ... ..	26- 4-1934	13-10-1934
	Ikhtâb (Aga Markaz) ... ..	14- 10-1934	31-12-1934
„ „ 4...	El Faiyûm ... ..	1- 1-1934	31-12-1934
„ „ 5...	El Minya ... ..	1- 1-1934	20- 8-1934
	Samaloût (District Hospital) ... ..	21- 8-1934	31-12-1934
„ „ 6...	Shebîn El Kôm... ..	1- 1-1934	31-12-1934
„ „ 7...	Toukh (Kaliobia) ... ..	1- 1-1934	31-12-1934
„ „ 8...	Badrashin (Gîza Markaz) ... ..	1- 1-1934	15- 9-1934
	Kombish El Hamra (Biba Markaz) ... ..	16-9-1934	31-12-1934
„ „ 9...	Aga ... ..	1- 1-1934	10- 7-1934
	Sinbellawein ... ..	11- 7-1934	31-12-1934
„ „ 10...	Om Khenan (Quesna Markaz) ... ..	1- 1-1934	31-12-1934
„ „ 11...	Biala ... ..	1- 1-1934	14- 8-1934
	Hosh Eisa (Abu El Matamir Markaz) ... ..	15- 8-1934	31-12-1934
„ „ 12...	Dissoûk (District Hosp.) ... ..	1- 1-1934	31-12-1934
„ „ 13...	Kotama El Ghaba (Tanta Markaz) ... ..	1- 1-1934	26- 5-1934
	El Shîn (Tanta Markaz)... ..	27- 5-1934	25-10-1934
	Sidi Salim (Kafr El Sheikh Markaz) ... ..	26-10-1934	31-12-1934
„ „ 14...	Sinnoures ... ..	1- 1-1934	10- 3-1934
	El Gharak El Soltany(Itsâ Markaz) ... ..	11- 3-1934	20- 8-1934
	Abshaway ... ..	21- 8-1934	31-12-1934
„ „ 15...	Ekwa (Sinbellawein Markaz) ... ..	1- 1-1934	31-12-1934
„ „ 16...	Berma (Tanta Markaz) ... ..	1- 1-1934	30- 7-1934
	Basion ... ..	31- 7-1934	31-12-1934
„ „ 17...	Kafr el Zayât ... ..	1- 1-1934	31-12-1934
„ „ 18...	Kalata El Soghra (Ashmoûn Markaz)... ..	1- 1-1934	15- 5-1934
	Sobk El Dahhak (Monoûf Markaz) ... ..	16- 5-1934	31-12-1934
„ „ 19...	Ashmoûn (District Hospital)... ..	1- 1-1934	31-12-1934
„ „ 20...	Kasr El Eini Street ... ..	1- 1-1934	31-12-1934
„ „ 21...	Fashn ... ..	1- 1-1934	31-12-1934
„ „ 22...	Saft Rashin (Biba Markaz) ... ..	1- 1-1934	29- 3-1934
	Biba... ..	30- 3-1934	31-12-1934
„ „ 23...	Sonbât (Zifta Markaz) ... ..	1- 1-1934	29- 8-1934
	Korashia (Santa Markaz) ... ..	30- 8-1934	31-12-1934
„ „ 24...	Etaiy El Baroûd ... ..	1- 1-1934	20- 7-1934
	Saft El Meloûk... ..	21- 7-1934	31-12-1934
„ „ 25...	Dekernes ... ..	1- 1-1934	3- 5-1934
	Mit El Kholi Momen (Dikernes Markaz) ... ..	4- 5-1934	31-12-1934
„ „ 26...	Mit El Kholy Abdalla (Fareskûr Markaz) ... ..	1- 1-1934	16- 7-1934
	Fareskûr (District Hospital) ... ..	17- 7-1934	31-12-1934
„ „ 27...	Mallawy ... ..	1- 1-1934	31-12-1934
„ „ 28...	El Toûd (Kom Hamada Markaz)... ..	1- 1-1934	13-11-1934
	Kom Hamada ... ..	14-11-1934	31-12-1934
Ankylostoma Hospital (Provincial Council, Menûfiya)... ..	Menoûf ... ..	1- 1-1934	31-12-1934
Ankylostoma Hospital (Provincial Council, Qena) ... ..	Naga Hamâdi ... ..	1- 1-1934	31-12-1934
Ankylostoma Hospital (Provincial Council, Sharqîya)... ..	Kafr Sakr ... ..	1- 1-1934	31-12-1934
Ankylostoma Hospital (Provincial Council, Daqahliya) ... ..	Oleila (Mit Ghamr Markaz) ... ..	1- 1-1934	30- 4-1934
	Mit Abu Khaled ... ..	1-5 -1934	31-12-1934

TABLE No. 14 (contd.)

Unit	Locality	Dates	
		From	To
Ank. School Clinic No. 1 ...	Industrial Arts School, Abbassia ... ..	1- 1-1934	1 -6-1934
	Manâshy (Embaba Markaz) ... ..	2- 6-1934	10-11-1934
	El Amir Farouk School (Rod El Farag)	11-11-1934	31-12-1934
" " " 2 ...	Sherbîn (District Hospital) ... ..	1- 1-1934	26- 4-1934
	Bilkâs ... ..	17- 4-1934	3-11-1934
	Samanoûd ... ..	4-11-1934	31-12-1934
" " " 3 ...	El Mahalla el Kobra ... ..	1- 1-1934	31-12-1934
" " " 4 ...	Kafr El Sheikh... ..	1- 1-1934	6- 1-1934
	Birket El Saki ... ..	7- 1-1934	31-12-1934
" " " 5 ...	El Santa ... ..	1- 1-1934	15- 9-1934
	Zifta Bandar ... ..	16- 9-1934	31-12-1934
" " " 6 ...	Ibrahimia (Hihia District) ... ..	1- 1-1934	31- 3-1934
	Alu Hammâd ... ..	1- 4-1934	20- 9-1934
	Hihia..... ..	21- 9-1934	31-12-1934
" " " 7 ...	Mahmoudia ... ..	1- 1-1934	31-12-1934
" " " 8 ...	Kena Secondary School ... ..	1- 1-1934	23- 1-1934
	Kom Ombo ... ..	24- 1-1934	16- 7-1934
	Dairoût (District Hosp.)... ..	17- 7-1934	31-12-1934
" " " 9 ...	Belbeîs (District Hospital) ... ..	1- 1-1934	19- 3-1934
	Minya El Kamh (District Hosp.) ... ..	20- 3-1934	31-12-1934
" " " 10 ...	Mashtoûl El Sûk ... ..	1- 1-1934	9-11-1934
	Manâshy (Embaba Markaz) ... ..	10-11-1934	31-12-1934
" " " 11 ...	Batanoûn (Shebin El Kom Markaz) ... ..	1- 1-1934	28- 6-1934
	Toukh El Nasara (Tala Markaz)... ..	29- 6-1934	31-12-1934
" " " 12 ...	Port Said ... ..	1- 1-1934	7- 4-1934
	Ismailia ... ..	8- 4-1934	31-12-1934
Temporary Ankylostoma Annex	Fakoûs (District Hospital) ... ..	1- 1-1934	8- 5-1934
	Tant El Gizira (Kalioubia) ... ..	9-5 -1934	31-12-1934

*N.B.*—Units shown as located in areas (as from 1-1-1934) were already located in the same areas during last year.

TABLE No. 15

NUMBER OF STUDENTS EXAMINED AND TREATED BY THE ANKYLOSTOMA  
UNITS OF THE SECTION DURING THE YEAR 1934

Unit	Number of Students	
	Examined	Treated
Ank. School Clinic No. 1	8,093	815
" " " 2	103	89
" " " 12	788	44
Ank. Hospital No. 1	160	139
" " " 2	50	—
" " " 4	850	302
" " " 6	5	5
" " " 7	528	327
" " " 9	260	81
" " " 14	312	202
" " " 20	160	—
" " " 23	763	682
Ank, Hospital. Benha	139	42
" " Naga Hamadi	968	738
" Annex Fikria	212	88
<b>TOTAL ... ..</b>	<b>13,391</b>	<b>3,554</b>

TABLE No. 16

GENERAL RETURN TO SHOW ADMISSIONS AND DISCHARGES DURING 1934 AT FOUAD  
SANATORIUM HELWAN

	1st Class		2nd Class		3rd Class		Total
	F.	M.	F.	M.	F.	M.	
Patients on Jan. 1, 1934 ...	—	4	25	43	47	143	262
Admissions ... ..	5	4	138	381	133	318	979
Patients treated during the Year ... ..	5	8	163	424	180	461	1,241
Discharges ... ..	4	6	132	287	119	349	897
Patients on Jan. 1, 1935 (A.M.)	—	—	18	53	75	198	344

TABLE No. 17

Return Showing Admissions (New) during 1934  
at Fouad Sanatorium, Helwân

---

TABLE NO. 17.—RETURN SHOWING ADMISSIONS (NEW)

Months	Total	Less than 5		5-10		10-15		15-20		20-25		25-30		30-35		35-40	
		F.	M.	F.	M.	F.	M.	F.	M.	F.	M.	F.	M.	F.	M.	F.	M.
January ... ..	45	—	—	—	—	1	—	3	6	4	11	1	3	—	8	—	3
February ... ..	41	—	—	—	—	—	—	2	8	3	5	2	8	1	6	—	—
March ... ..	55	—	1	—	—	1	1	4	8	5	9	2	7	3	4	—	5
April ... ..	85	—	—	1	1	2	—	7	11	6	17	5	11	5	6	1	4
May ... ..	76	—	—	1	2	2	2	6	12	4	16	3	8	2	3	—	5
June ... ..	80	—	—	2	—	4	3	4	10	4	11	3	14	1	7	4	2
July... ..	97	—	—	1	—	1	3	11	7	8	27	3	10	3	4	1	7
August ... ..	74	—	—	—	—	1	1	6	11	1	16	7	12	2	6	2	7
September ... ..	100	—	1	—	—	—	3	8	16	8	21	3	13	3	9	—	5
October ... ..	96	—	1	1	—	—	3	6	15	6	20	4	15	3	4	1	5
November ... ..	72	—	—	—	2	1	2	1	11	1	21	6	11	1	5	1	2
December ... ..	71	—	—	3	—	3	1	6	7	3	13	2	11	3	10	1	2
Total ... ..	892	—	3	9	5	16	19	64	122	53	187	41	123	27	72	11	47

DURING 1934 AT FOUAD SANATORIUM HELWÂN

40-45		45-50		50-55		55-60		60-00		Merchants	Employees	Students	Peasants	Labourers and Others	No Occupations	I		II		III	
F.	M.	F.	M.	F.	M.	F.	M.	F.	M.							F.	M.	F.	M.	F.	M.
—	5	—	—	—	—	—	—	—	—	7	9	5	6	9	9	—	—	5	22	4	14
—	2	—	4	—	—	—	—	—	—	7	8	6	5	9	6	—	—	3	17	5	16
—	2	1	1	1	—	—	—	—	—	1	7	7	11	11	18	1	1	10	22	6	15
—	6	—	—	—	1	—	—	—	1	4	13	11	15	14	28	2	1	16	34	9	23
1	5	—	3	—	—	—	1	—	—	5	16	10	11	15	19	2	—	7	33	10	24
2	3	1	4	—	—	—	1	—	—	2	15	14	12	15	22	—	—	16	28	9	27
—	5	2	3	—	—	—	1	—	—	6	26	8	8	17	32	—	—	15	36	15	31
—	1	—	1	—	—	—	—	—	—	7	15	13	11	11	17	—	—	9	31	10	24
1	2	2	4	—	1	—	—	—	—	10	18	18	15	13	26	—	—	13	40	12	35
2	4	—	2	—	2	—	1	1	—	10	13	11	15	20	27	—	—	13	40	11	32
1	—	2	3	—	1	—	—	—	—	3	11	10	10	24	14	—	1	8	21	6	36
—	4	—	1	1	—	—	—	—	—	4	6	7	10	21	23	—	—	4	20	18	29
7	39	8	26	2	5	—	4	1	1	66	157	120	129	179	241	5	3	119	344	115	306

TABLE No. 18

THE WORK OF THE LABORATORY DURING 1934 AT FOUAD SANATORIUM,  
HELWÂN

---

585	Positive results for T.B.
676	Negative results for T.B.
3,094	Specimens of urine.
2,621	Specimens of stools.
6	Specimens for blood counting.
12	Specimens of blood for malaria.
<hr/>	
6,994	Total number of specimens.
<hr/> <hr/>	



TABLE No. 19.—THE WORK OF THE X-RAY SECTION AT FOUAD SANATORIUM, HELWAN

MONTHS	IN-PATIENTS OF THE SANATORIUM				PATIENTS FROM THE DISPENSARY				PATIENTS FROM THE EXTERIOR (PAYING)				TOTAL
	Chest		Bones		Chest		Bones		Chest		Bones		
	30×40	14×17	30×40	14×17	30×40	14×17	30×40	14×17	30×40	14×17	30×40	14×17	
January	54	27	3	2	20	8	1	—	—	—	—	—	115
February	31	75	1	—	17	19	—	—	—	1	—	—	144
March	58	74	3	3	27	23	2	—	1	1	—	—	192
April	75	84	—	—	39	23	—	2	2	2	—	—	227
May	63	98	—	1	43	42	—	4	2	2	—	—	253
June	67	74	3	2	51	29	—	2	1	1	—	—	229
July	122	39	7	—	58	11	—	2	4	4	—	—	243
August	7	83	—	2	—	41	—	—	1	1	—	—	135
September	112	66	20	—	15	11	—	2	2	2	—	—	228
October	65	72	1	—	51	35	—	—	—	—	—	—	225
November	61	49	1	2	25	46	—	—	—	1	—	—	185
December	73	60	4	15	40	16	—	—	—	—	—	—	208
	788	801	43	27	386	304	3	2	15	15	—	—	2,384

TABLE No. 20

RETURN OF MAIN TREATMENTS APPLIED TO PATIENTS DISCHARGED DURING THE YEAR  
1934 AT FOUAD SANATORIUM, HELWÂN

---

75	Artificial pneumothorax—new cases—(Unilateral).*
2	Artificial pneumothorax—new cases—(Bilateral).
170	Phrenic evulsions.
6	Oleothorax—new cases.
6	Rib resections and drainage.
1	Lipiodol injections (Diagnostic).
2	Jacobeaus operations (Cautery of adhesions).†
183	Gold treatment (Number of cases).
155	Calcium treatment (Number of cases).

---

\* Number of refills exceeds 2,000.

† New Diathermy apparatus was not available yet, and hence operation was not attempted often.

TABLE No. 21 STATISTICS SHOWING NUMBER OF NEW AND OLD PATIENTS WHO ATTEND OLD CAIRO DISPENSARY  
Attached to Helwan Sanatorium

Months	Men		Women		Sputum of the New Men		Sputum of the Old Men		Sputum of the New Women		Sputum of the Old Women		(Refills) Pneumotherax	
	New	Old	New	old	Neg.	Pos.	Neg.	Pos.	Neg.	Pos.	Neg.	Pos.	Men	Women
January ...	25	39	16	29	10	1	14	—	5	2	5	—	11	3
February ...	22	49	18	31	9	1	4	—	11	—	3	—	9	5
March ...	38	28	14	26	12	4	2	—	6	—	4	—	11	4
April ...	63	47	32	33	14	2	4	1	7	1	9	—	15	9
May ...	64	31	36	25	26	8	3	—	12	1	2	—	16	7
June ...	54	34	22	46	28	5	14	—	6	1	3	—	13	8
July ...	67	48	25	43	21	6	5	1	5	2	2	1	12	9
August ...	76	54	32	34	18	3	11	2	10	1	6	—	17	10
September ...	67	52	26	26	13	1	13	2	8	1	11	—	11	9
October ...	74	57	32	24	19	3	2	—	16	1	5	—	15	5
November ...	65	39	30	28	15	5	12	2	11	2	3	—	10	6
December ...	43	52	19	27	11	9	5	—	9	2	2	—	17	8
TOTAL ...	658	530	302	372	196	48	89	8	106	14	55	1	157	83
	1,188		674										240	

TABLE NO. 22

A DETAILED ACCOUNT OF INCOME 1934 AT FOUAD SANATORIUM, HELWÂN

Months	Fees of Treatment	Fees for official Documents	Fees for X-rays	Price of broken Materials	Deposits of Contractors	Deposits of Patients	Total
	L.E.	L.E.	L.E.	L.E.	L.E.	L.E.	L.E.
January ... ..	525·180	·930	—	—	—	—	526·110
February ... ..	354·420	·920	1·500	—	—	—	356·840
March ... ..	372·600	·460	3·000	—	—	—	376·060
April ... ..	543·775	·460	6·000	—	·900	—	551·135
May ... ..	564·950	—	9·000	—	—	—	573·950
June ... ..	429·250	—	4·500	—	—	—	433·750
July ... ..	439·950	·920	9·000	—	—	—	449·870
August ... ..	411·100	·460	3·000	—	—	—	414·560
September ... ..	572·000	·920	6·000	1·696	—	1·570	582·186
October ... ..	576·450	·920	1·500	—	—	—	578·870
November ... ..	461·590	·460	1·500	—	—	—	463·550
December ... ..	626·240	—	—	—	—	5·300	631·540
TOTAL ... ..	5,877·505	6·450	45·000	1·696	·900	6·870	5,938·421

TABLE No. 23  
LIST OF EXPENDITURE OF FOUAD SANATORIUM, HELWÂN

Items	L.E.
Salaries ... ..	7,524
Diet ... ..	6,276
Rent, Water, Light and Sewage ... ..	579
Equipment, Instruments and Drugs ... ..	4,557
Transport ... ..	14
Up-keep ... ..	621
Travelling allowance and travelling expenses	28
TOTAL ... ..	19,599

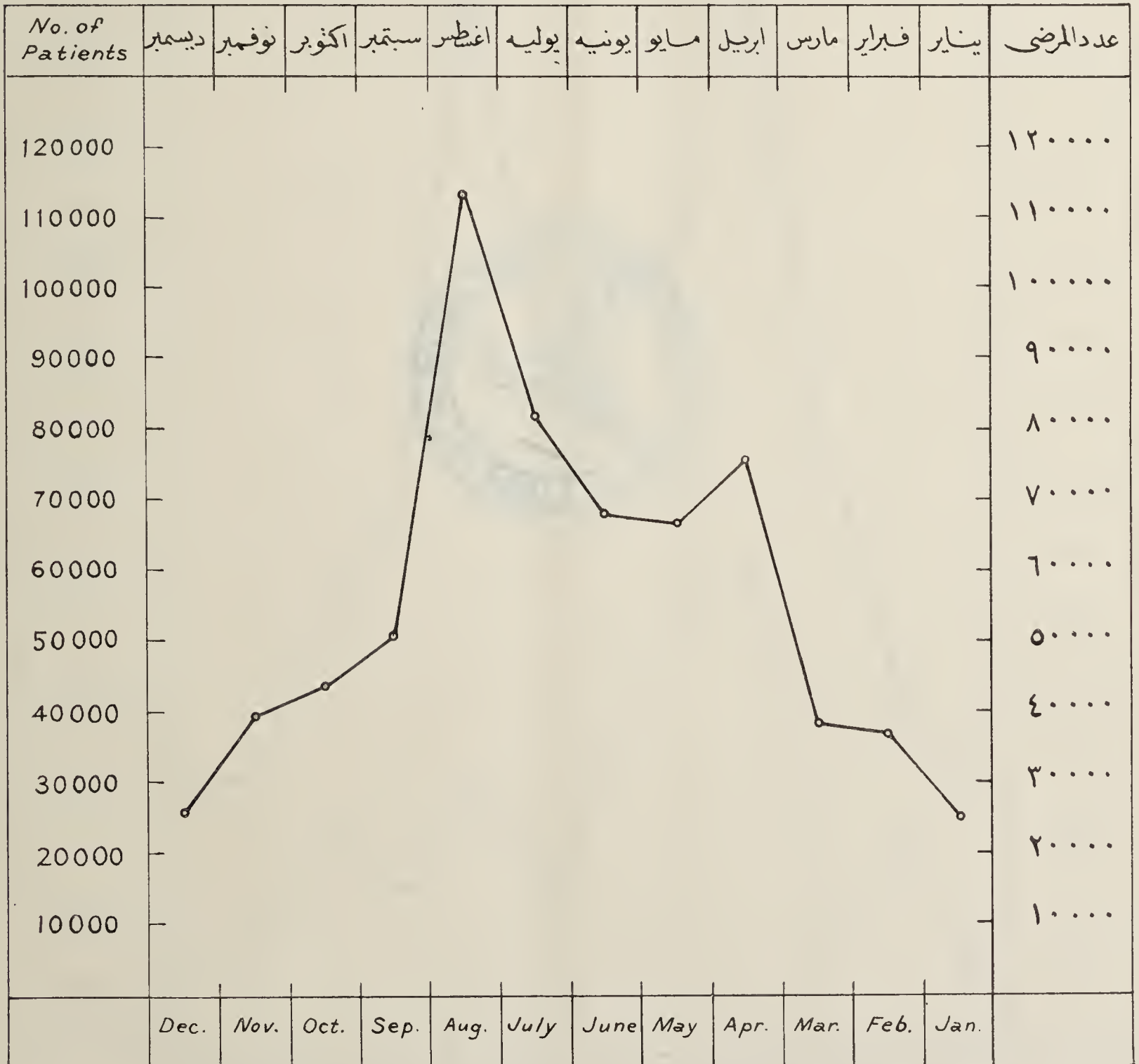


Table N° 1

جدول رقم ١

رسم بياني بعدد المرضى المستجدين شهريا بوحدات الأنكلستوما والبلهارسيا في خلال سنة ١٩٣٤

A GRAPH SHOWING THE MONTHLY NUMBER OF NEW PATIENTS ATTENDING THE ANK. &amp; BILH. UNITS OF THE SECTION DURING THE YEAR 1934

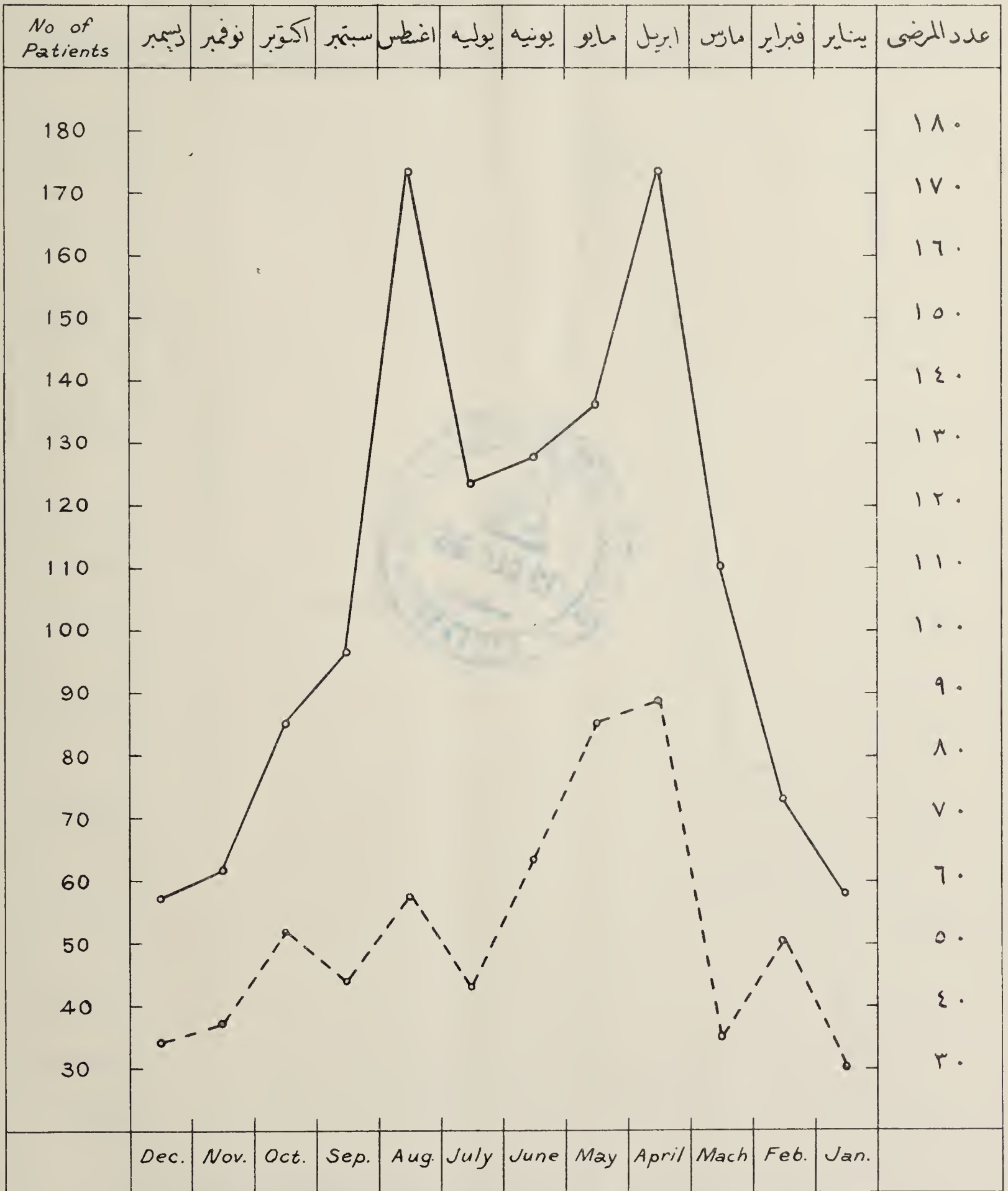






رسم بياني بعدد المرضى المستجدين والإيجابي منهم شهرياً بوحدة الجذام في خلال سنة ١٩٣٤

A GRAPH SHOWING THE MONTHLY NUMBER OF NEW PATIENTS, AND THOSE FOUND POSITIVE, IN THE LEPROSY UNITS, DURING THE YEAR 1934



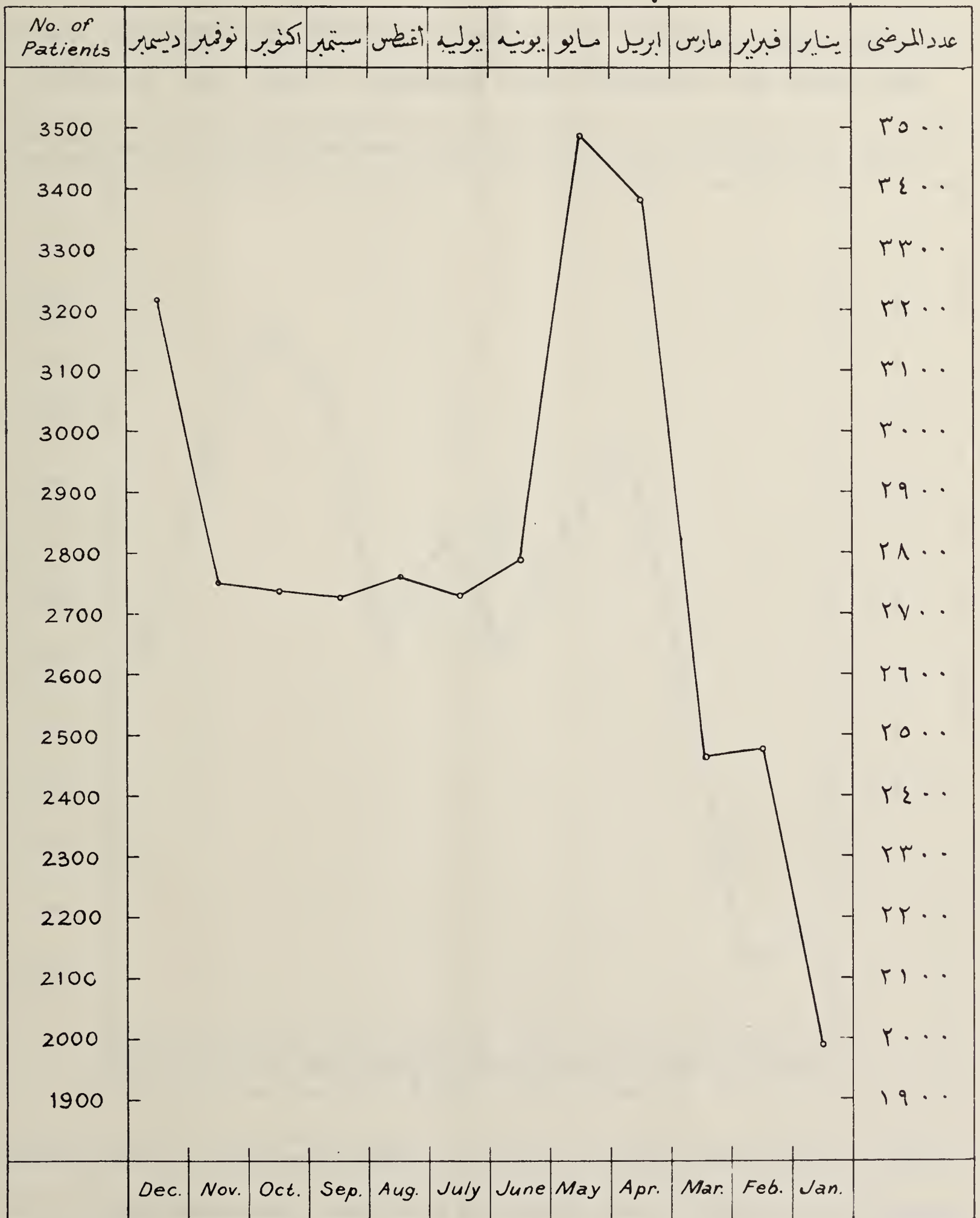
No. of new patients per month ————— عدد المرضى المستجدين شهرياً

No. of positive cases per month - - - - - عدد الإيجابي منهم شهرياً



رسم بياني بعدد المرضى المسجلين شهرياً بوحدات الأمراض الصدرية في خلال سنة ١٩٣٤

A GRAPH SHOWING THE MONTHLY NUMBER OF NEW PATIENTS ATTENDING THE CHEST DISEASES DISPENSARIES DURING THE YEAR 1934



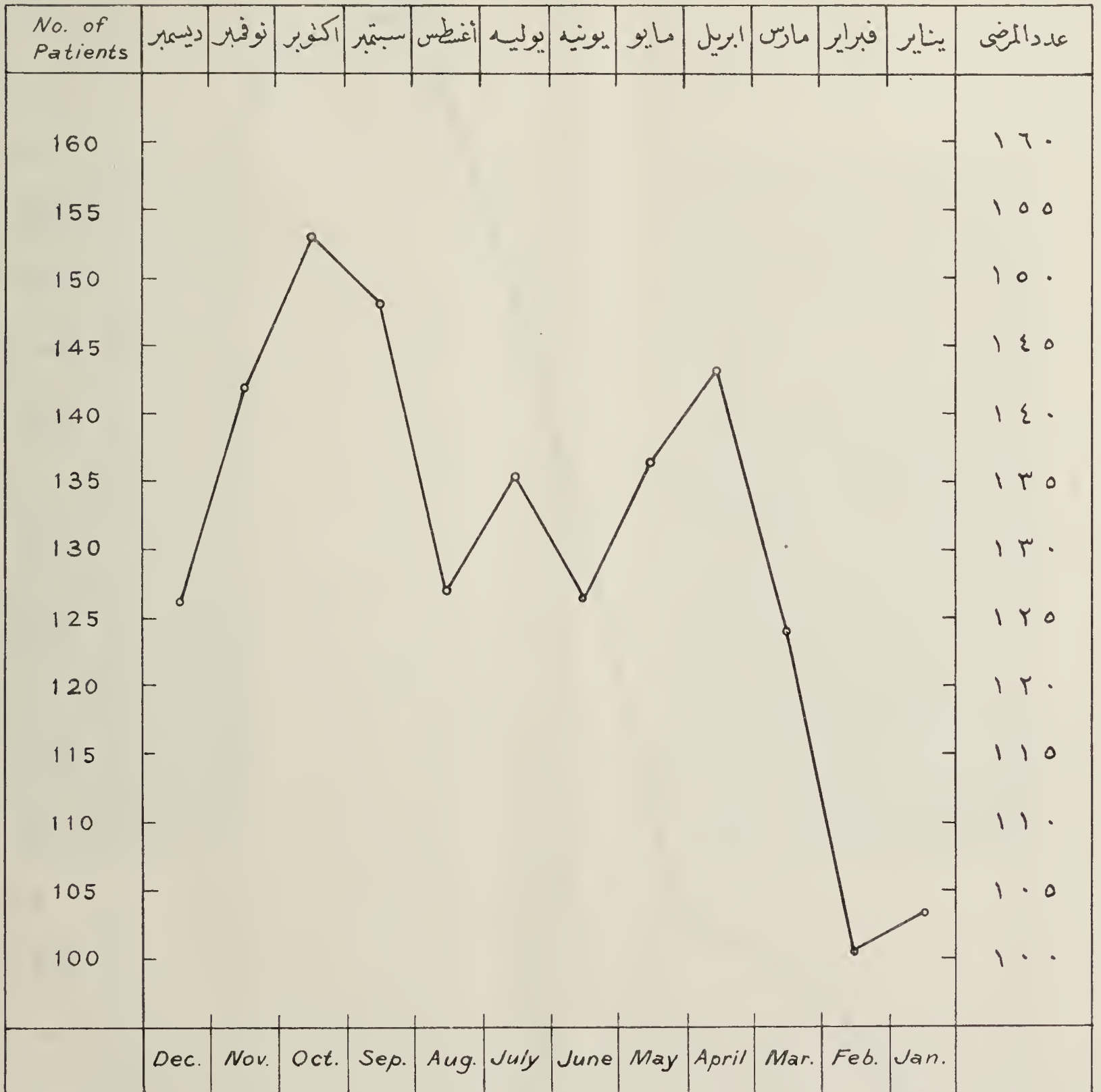
ملاحظة: للوقوف على الإيجابى منهم انظر جدول رقم ٤ .

N. B. For positive cases please see Table N° 4.



رسم بياني بعدد الحالات الإيجابية للسائل شهرياً بوحدة الأمراض الصدرية في خلال سنة ١٩٣٤

A GRAPH SHOWING THE MONTHLY NUMBER OF TUBERCULOSIS POSITIVE CASES IN THE CHEST DISEASES UNITS DURING THE YEAR 1934



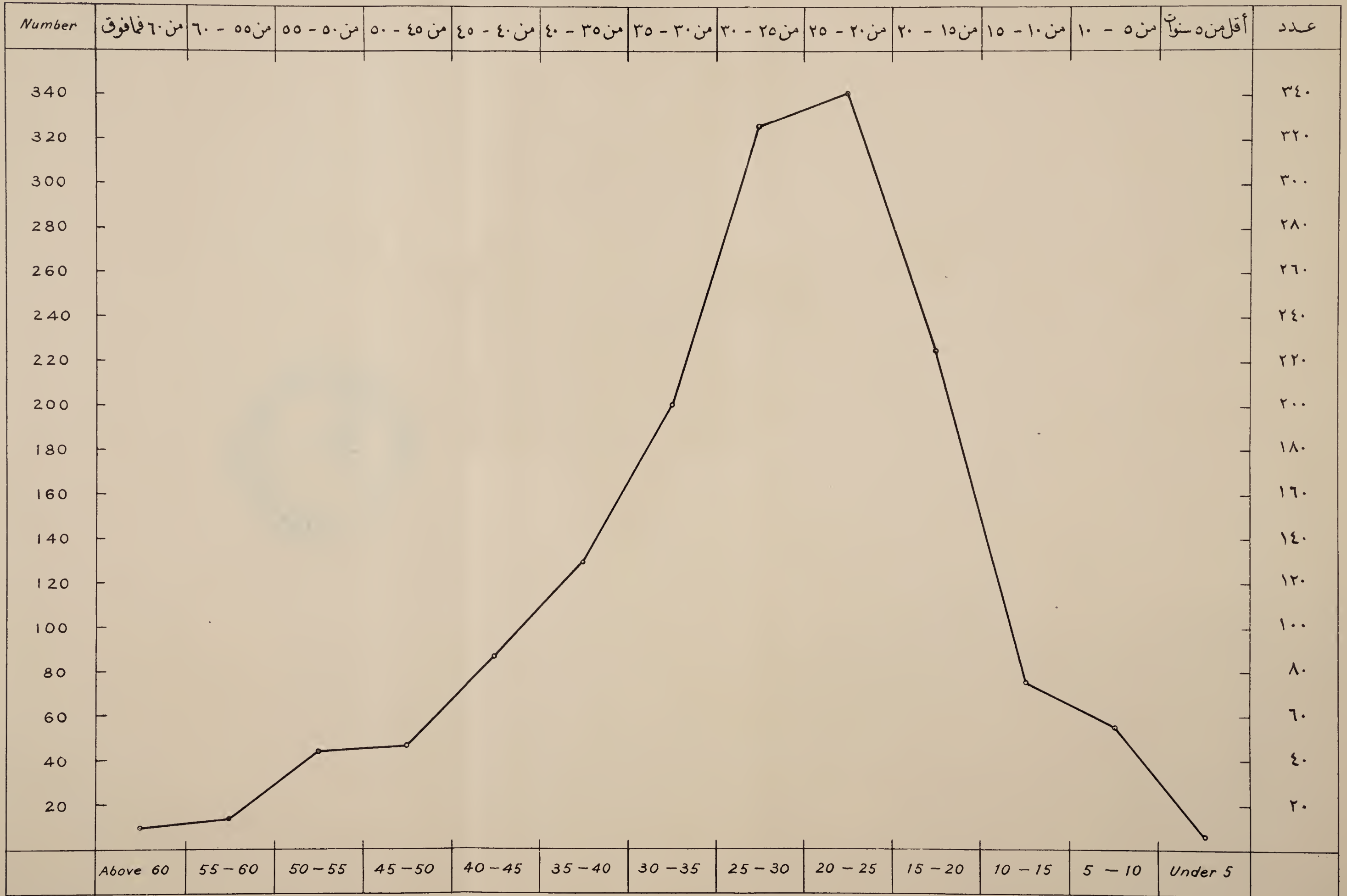
ملاحظة - البيان أعلاه هو عن الحالات التي وجدت إيجابية للسائل بفحص البصاق أو بالأشعة

N. B. The graph shows the cases found positive for tuberculosis by sputum or by X Ray examination.



رسم بياني بعدد المرضى الإيجابيين للسَّلِّ حَسَبَ أعمارهم بمسْتَوْصَفَاتِ الأَمْرَاضِ الصَّدْرِيَّةِ فِي خِلالِ سَنَةِ ١٩٣٤

A GRAPH SHOWING NUMBER OF TUBERCULOSIS POSITIVE CASES (According to ages) IN THE CHEST DISEASES DISPENSARIES DURING THE YEAR 1934



ملاحظة : البيان أعلاه هو عن الحالات التي وجدت ايجابية للسَّلِّ بفحص البصاق أو بالأشعة

N. B. The Graph shows cases found positive for tuberculosis by sputum examination or by X-Ray.







FOUAD SANATORIUM, HELWAN





FOUAD SANATORIUM, HELWAN





ANKYLOSTOMA HOSPITAL, TOUKH





VIEW OF ABOU ZAABAL LEPER COLONY



VIEW OF ABOU ZAABAL LEPER COLONY







