


THE METROPOLITAN MUSEUM OF ART



3 0620 00365852 2



Digitized by the Internet Archive
in 2014

SALE 4007 ▸ DECEMBER 8-10 ▸ EXHIBITION FROM DECEMBER 3

Diamonds ▸ Emeralds
Oriental Rubies and Sapphires

MOUNTED AS

BRACELETS, CLIP PINS, RINGS

COMBINATION NECKLACES AND WRIST WATCHES

In Artistic and Unusual Modern Platinum Settings

ALSO SEVERAL BEAUTIFUL GENUINE

ORIENTAL PEARL NECKLACES



The Stock of
N. MILLER



AMERICAN ART ASSOCIATION
ANDERSON GALLERIES · INC

30 East Fifty-Seventh Street · New York

1932

Priced Catalogues

A priced copy of this Catalogue may be
obtained for One Dollar for each
Session of the Sale



AMERICAN ART ASSOCIATION
ANDERSON GALLERIES · INC

DESIGNS ITS CATALOGUES
AND DIRECTS ALL DETAILS OF ILLUSTRATION
TEXT AND TYPOGRAPHY

Conditions of Sale

[1]

All bids to be PER PIECE as numbered in the catalogue, unless otherwise mentioned.

[2]

The highest bidder to be the buyer. In all cases of disputed bids the lot shall be resold, but the auctioneer will use his judgment as to the good faith of all claims, and his decision shall be final.

[3]

Any bid which is not commensurate with the value of the article offered, or which is merely a nominal or fractional advance, may be rejected by the auctioneer if in his judgment such bid would be likely to affect the sale injuriously.

[4]

The name of the buyer of each lot shall be given immediately after the sale thereof, and when so required, each buyer shall sign a card giving the lot number, amount for which sold, and his or her name and address. ¶ A deposit at the actual time of the sale shall be made of all or such part of the purchase prices as may be required. ¶ If the two foregoing conditions are not complied with, the lot or lots so purchased may at the option of the auctioneer be put up again and resold.

[5]

In the event that articles are not paid for in full and not called for by the purchaser by noon of the day following that of the sale the Company reserves the right, any other stipulation in these conditions of sale to the contrary notwithstanding, in respect to any or all lots included in the bill, at its option, either to cancel the sale thereof or to resell the same at public or private sale without further notice for the account of the buyer and to hold the buyer responsible for any deficiency sustained in so doing.

[6]

The Company exercises great care to catalogue every lot correctly and endeavors therein and also at the actual time of the sale to point out any error, defect, or imperfection, but guaranty is not made either by the owner or the Company of the correctness of the description, genuineness, authenticity or

[]

condition of any lot, and no sale will be set aside on account of any incorrectness, error of cataloguing or imperfection not noted or pointed out. Every lot is sold "as is" and without recourse.

[7]

Buying or bidding by the Company for responsible parties on orders transmitted to it by mail, telegraph, or telephone, if conditions permit, will be faithfully attended to without charge. Any purchases so made will be subject to the foregoing conditions of sale. Orders for execution by the Company should be given with such clearness as to leave no room for misunderstanding. Not only should the lot number be given, but also the name of the object, and a bid on several objects catalogued under a single number should be stated to be so much per piece unless the description contains the notation "[Lot.]", in which case the bid should be stated to be so much FOR THE LOT. If the one transmitting the order is unknown to the Company, a deposit must be sent or reference submitted. Shipping directions should also be given.

[8]

The Company will afford every facility for the employment of carriers and packers by the purchasers, but will not be responsible for any damage arising from the acts of such carriers and packers.

{ THESE CONDITIONS OF SALE CANNOT BE ALTERED
EXCEPT BY AN OFFICER OF THE COMPANY }

Sales conducted by

O. BERNET

H. H. PARKE

A. N. BADE

H. E. RUSSELL, JR.

Telephone PLAZA 3-1269

Catalogues on Request

Cable ARTGAL or ANDAUCTION

AMERICAN ART ASSOCIATION
ANDERSON GALLERIES · INC

New York: 30 EAST 57TH STREET

London Representative: SHIRLEY FALCKE
77 Brook Street, Grosvenor Square, W. 1

First Session

Thursday, December 8, 1932, at 2:15 p. m.

Catalogue Numbers 1 to 117 Inclusive

1. DIAMOND RING
In platinum mounting. *sed*
2. DIAMOND WEDDING RING
Twenty-four round diamonds; platinum mounting. *250*
3. DIAMOND AND PLATINUM VEST CHAIN
Containing five diamonds. *250*
4. DIAMOND WRIST WATCH
Thirty-six round diamonds. Seventeen-jewel movement; platinum case. *0-*
5. DIAMOND WATCH
Twenty-four diamonds; white gold mesh band. Seventeen-jewel movement. *250*
6. OPAL RING
One genuine opal in a fine platinum mounting containing sixty-six round diamonds. *5-*
7. SAPPHIRE STRAIGHT-ROW BRACELET
Set with fifty-one genuine sapphires. *drawn*
8. DIAMOND WRIST WATCH
Four baguette diamonds and thirty-eight round diamonds. Seventeen-jewel movement; platinum case. *5-*
9. DIAMOND WRIST WATCH
Four baguette diamonds and forty-four round diamonds. Seventeen-jewel movement; platinum case. *0-*

10. DIAMOND DINNER RING

Three centre stones, approximately .75 carat, and twenty-six small round diamonds; platinum setting.

11. DIAMOND SOLITAIRE RING

Centre diamond, .77 carat; in platinum mounting with four diamonds and six genuine sapphires.

12. RUBY AND DIAMOND RING

One genuine Oriental ruby, 1 carat, and eight round diamonds; platinum setting.

13. MARQUISE DIAMOND RING

Marquise diamond, .64 carat, and twenty-four small round diamonds; platinum mounting.

14. DIAMOND AND SAPPHIRE DINNER RING

Two diamonds, twenty-six small diamonds, and two genuine sapphires; platinum mounting.

15. DIAMOND WRIST WATCH

Forty-four round diamonds and two marquise diamonds. Seventeen-jewel movement; platinum case.

16. DIAMOND RING

One round diamond, .81 carat, and four round diamonds; platinum mounting.

17. DIAMOND WRIST WATCH

Forty-eight round diamonds and sixteen baguette diamonds. Seventeen-jewel movement; platinum case.

18. EMERALD RING

One genuine emerald, 1.34 carats, set in a fine platinum mounting with two baguette diamonds.

19. DIAMOND RING

One round diamond, .93 carat; platinum mounting with ten round diamonds.

20. DIAMOND WRIST WATCH

140- Sixty-four round diamonds and six baguette diamonds. Seventeen-jewel movement; platinum case.

21. DIAMOND WRIST WATCH

140- Six marquise diamonds, .24 carat, and sixty-six round diamonds, .67 carat. Seventeen-jewel movement; platinum case.

22. DIAMOND WRIST WATCH

130- Eighty-eight round diamonds and six baguette diamonds. Seventeen-jewel movement; platinum case.

23. DIAMOND AND EMERALD BOW PIN

70- Fifty-nine diamonds and twenty genuine emeralds; platinum mounting.

24. DIAMOND WRIST WATCH

80- Seventy round diamonds and twelve baguette diamonds. Seventeen-jewel movement; platinum case.

25. DIAMOND, ONYX, AND CORAL PIN

80- Containing thirty-two diamonds; platinum mounting.

26. STAR SAPPHIRE RING

70- One genuine Oriental star sapphire, 9.37 carats, set in a gentleman's gypsy mounting with two half-moon diamonds.

27. DIAMOND WRIST WATCH

00- Eight baguette diamonds and eighty-eight round diamonds. Seventeen-jewel movement; platinum case.

28. DIAMOND DINNER RING

60- One centre marquise diamond, twenty small diamonds, and six genuine sapphires; platinum mounting.

29. DIAMOND BRACELET

90- Three marquise diamonds, .21 carat, and sixty-seven round diamonds, 1.86 carats; platinum mounting.

30. DIAMOND AND SAPPHIRE BAR PIN

90- Twelve diamonds and eight genuine sapphires; platinum mounting.

31. DIAMOND BRACELET

90- Twelve marquise diamonds, .52 carat, and sixty round diamonds, 1.04 carats; platinum mounting.

32. DIAMOND CIRCLE BROOCH

110- Forty-one round diamonds, 2.50 carats; platinum mounting.

33. PAIR DIAMOND AND AQUAMARINE CLIPS

190- Sixty round diamonds, 2.02 carats; fourteen aquamarines, 7.72 carats; two triangle diamonds, .44 carat; platinum setting.

34. EMERALD AND DIAMOND RING

170- One genuine emerald, 2.03 carats, and four baguette diamonds; platinum mounting.

35. THREE-STONE EMERALD AND DIAMOND RING

90- Two genuine emeralds, 1.21 carats; one emerald-cut diamond, .74 carat; two baguette diamonds; platinum mounting.

36. DIAMOND WRIST WATCH

400- Fourteen baguette diamonds, 1.57 carats, and fifty round diamonds, .46 carat. Seventeen-jewel movement; platinum case.

37. DIAMOND AND PLATINUM CLIP

180- Ninety-six round diamonds, 2.31 carats; six baguette diamonds; two marquise diamonds; platinum setting.

38. DIAMOND AND EMERALD RING

130- Two baguette diamonds, .10 carat; one triangle diamond, 1.41 carats; one imitation emerald; platinum setting.

39. DIAMOND, EMERALD, AND ONYX BROOCH

150- One marquise diamond and fifty-two round diamonds; genuine emeralds and onyxes; platinum mounting.

40. DIAMOND BRACELET

40- One marquise diamond, .20 carat, and one hundred twenty-eight round diamonds, 2.76 carats; platinum mounting.

41. DIAMOND SOLITAIRE RING

95- Centre stone, 1.90 carats, in platinum setting with eight small diamonds and eight genuine sapphires.

42. PLATINUM AND DIAMOND RING

100- One round diamond, 1.54 carats, and two baguette diamonds; platinum setting.

43. CARVED EMERALD BEAD NECKLACE

75- Seventy-four genuine carved emerald beads, 148 carats. Platinum snap containing one genuine carved emerald and sixteen round diamonds.

44. DIAMOND WATCH BRACELET

75- Six baguette diamonds, .15 carat, and one hundred twenty-eight round diamonds, 2.38 carats. Fine seventeen-jewel movement; platinum mounting.

45. DIAMOND PENDANT

10- One hundred seven round diamonds, 4 carats, and four baguette diamonds, .30 carat; platinum mounting.

46. DIAMOND WATCH BRACELET

15- Twenty-four baguette diamonds, .70 carat, and one hundred fifty-two round diamonds, 2.75 carats; platinum setting. Seventeen-jewel movement.

47. PEARL RING

75- One genuine American pearl, 20.34 grains, set in a fine platinum mounting containing six baguette diamonds and twelve round diamonds.

48. PAIR DIAMOND CLIPS

Thirty-four marquise diamonds, 1.83 carats; six baguette diamonds, .26 carat; sixty-six round diamonds, 2.12 carats; platinum mounting.

49. CABOCHON EMERALD RING

One genuine cabochon emerald, 3.21 carats, and two baguette diamonds; platinum mounting.

50. DIAMOND AND COLORED STONE FLOWER BROOCH

One triangle diamond, one trapeze diamond, two baguette diamonds, and seventy-three round diamonds; twenty-six genuine rubies, emeralds, and sapphires. Platinum mounting.

51. DIAMOND CLIP BROOCH COMBINATION

Fourteen fancy diamonds, .79 carat, and one hundred two round diamonds, 1.89 carats; platinum mounting.

52. PEARL RING

One genuine Oriental button pearl, 14.68 grains, and two baguette diamonds; fine platinum mounting.

53. SAPPHIRE AND DIAMOND BRACELET

Six marquise diamonds, 1.28 carats, and sixty round diamonds, 1.87 carats; thirty-six calibre sapphires; platinum mounting.

54. EMERALD-CUT DIAMOND RING

One emerald-cut diamond, 1.85 carats, and four baguette diamonds; platinum mounting.

55. PLATINUM AND EMERALD RING

One genuine emerald and two baguette diamonds; platinum mounting.

56. RUBY AND DIAMOND RING

One genuine Oriental ruby, 2.73 carats, and two trapeze diamonds, 1.08 carats; set in a beautiful platinum mounting with two baguette diamonds.

57. DIAMOND WRIST WATCH

Fourteen baguette diamonds and fourteen round diamonds.
Seventeen-jewel movement; platinum case.

58. DIAMOND BRACELET

Five baguette diamonds, two marquise diamonds, and ninety-six round diamonds; platinum mounting.

59. PEARL SCARF PIN

One genuine Oriental pear-shaped pearl, 21 grains, set on a white gold scarf pin.

60. DIAMOND BRACELET

Square centre diamond, approximately 1 carat, and one hundred sixty-eight round diamonds; platinum mounting.

61. DIAMOND BRACELET

Nine baguette diamonds, two marquise diamonds, and ninety-eight round diamonds; platinum mounting.

62. DIAMOND WATCH BRACELET

Six baguette diamonds, .41 carat; ten marquise diamonds, .49 carat; one hundred ninety-four round diamonds, 2.24 carats. Seventeen-jewel movement; platinum mounting.

63. EMERALD AND DIAMOND RING

One genuine cabochon emerald, 2.63 carats, and eighteen round diamonds; platinum setting.

64. DIAMOND BRACELET

Nine marquise diamonds, 1.30 carats, and one hundred fifty-nine round diamonds, 3.04 carats; platinum mounting.

65. DIAMOND CLIP BROOCH COMBINATION

Twenty baguette diamonds, 1.79 carats, and eighty-four round diamonds, 3.14 carats; platinum mounting.

66. DIAMOND RING

Two diamonds, approximately 1.50 carats each, and one genuine sapphire; mounted in white gold.

67. DIAMOND WATCH BRACELET

Fourteen baguette diamonds, .96 carat, and two hundred twenty-five round diamonds, 2.17 carats. Seventeen-jewel movement; platinum mounting.

Out

68. DIAMOND BRACELET

Three marquise diamonds, .51 carat; twelve fancy diamonds, .83 carat; one hundred and eighty-six round diamonds, 3.74 carats; platinum mounting.

375-

69. FINE EMERALD-CUT DIAMOND RING

One emerald-cut diamond, 2.32 carats, and two baguette diamonds; platinum setting.

425-

70. DIAMOND WATCH BRACELET

Eight baguette diamonds, .78 carat, and one hundred eighty-one round diamonds, 3.37 carats. Seventeen-jewel movement; platinum mounting.

300-

71. DIAMOND CLIP BROOCH COMBINATION

Eighteen baguette diamonds, 2.38 carats, and ninety-six round diamonds, 3.49 carats; platinum mounting.

Out

72. DIAMOND AND RUBY BRACELET

One marquise diamond, .41 carat; twenty-six fancy diamonds, 1.64 carats; one hundred ninety-seven round diamonds, 3.87 carats; six genuine Oriental rubies; platinum mounting.

300-

73. ORIENTAL PEARL NECKLACE

One hundred twenty-seven genuine Oriental pearls, approximately 90 grains; platinum clasp with one large round diamond and ten small diamonds.

425-

74. EMERALD AND DIAMOND TWIN RING

One genuine emerald and one emerald-cut diamond, totaling 1.60 carats, and two baguette diamonds; platinum mounting.

450-

75. PAIR DIAMOND AND PLATINUM CLIPS

Two half-moon diamonds, .89 carat; thirty-two baguette diamonds, 2.66 carats; eighty-eight round diamonds; platinum mounting.

425-

76. DIAMOND BRACELET

Four marquise diamonds, .84 carats; four baguette diamonds, .36 carat; one hundred thirty-seven round diamonds, 3.95 carats; platinum mounting.

77. DIAMOND CLIP BROOCH COMBINATION

Twenty-eight baguette diamonds, 1.89 carats, and two hundred one round diamonds, 4.64 carats; platinum mounting.

78. STRAIGHT-ROW DIAMOND BRACELET

Thirty-three round diamonds, 8.43 carats, set in a fine platinum mounting. The stones are of excellent quality and well matched.

79. RUBY RING

One genuine Oriental ruby, 6.83 carats, and two baguette diamonds; platinum mounting.

80. DIAMOND LEAF BROOCH

Twenty-seven fancy diamonds, 3.75 carats, and eighty-seven round diamonds, 4.70 carats; platinum mounting.

81. DIAMOND CLIP BROOCH COMBINATION

Twelve baguette diamonds, 2.49 carats; twelve marquise diamonds, 1.31 carats; eighty-eight round diamonds, 2.37 carats; platinum mounting.

82. SQUARE-CUT DIAMOND RING

Weight 4.07 carats; platinum mounting.

83. RUBY RING

One genuine Oriental ruby, 12.22 carats, in a fine platinum and diamond mounting.

84. DIAMOND BRACELET

Four marquise diamonds, 1.08 carats; twenty-four baguette diamonds, 1.27 carats; three hundred sixty round diamonds, 7.57 carats; platinum mounting.

- 450- 85. DIAMOND BRACELET
Six square diamonds, 2.07 carats; twelve baguette diamonds, .38 carat; two hundred sixty-four round diamonds, 4.76 carats; platinum mounting.
- 600- 86. MARQUISE DIAMOND RING
Weight 3.05 carats; platinum mounting.
- 1100- 87. DIAMOND BRACELET
Two hundred twelve round diamonds, 10 carats; twenty-four baguette diamonds, 1.50 carats; four marquise diamonds, 3 carats; platinum mounting.
- 450- 88. EMERALD AND DIAMOND BRACELET
Three genuine cabochon emeralds, 9.20 carats; eighteen baguette diamonds, 1.94 carats; three hundred twenty-eight round diamonds, 10.78 carats; platinum mounting.
- 300- 89. EMERALD BEAD NECKLACE
Seventy-seven genuine emerald beads, approximately 200 carats; cabochon emerald and diamond clasp set in platinum.
- 650- 90. DIAMOND BRACELET
Three marquise diamonds, 1.45 carats; forty-two fancy diamonds, 2.47 carats; three hundred eighteen round diamonds, 10.14 carats; platinum mounting.
- 675- 91. ORIENTAL PEARL ROPE
Eighty-five genuine Oriental pearls, 410 grains; marquise diamond snap set in platinum, .30 carat.
- 1000- 92. DIAMOND BRACELET
Thirty-two baguette diamonds, 3.40 carats; three marquise diamonds, 1.32 carats; three hundred twelve diamonds, 9.85 carats; platinum setting.
- 1100- 93. EMERALD-CUT DIAMOND RING
Consisting of one emerald-cut diamond, 4.25 carats, and two small baguette and two square diamonds; platinum mounting.

94. CARVED EMERALD AND DIAMOND BRACELET

300- Four genuine carved emeralds, 43.72 carats, and two hundred eighty-three round diamonds, 15.32 carats; fine platinum mounting.

95. DIAMOND BRACELET

900- Three emerald-cut diamonds, 3.15 carats; eighteen fancy diamonds, 2.17 carats; four hundred fifty-six round diamonds, 16.40 carats; platinum mounting.

96. DIAMOND BRACELET

150- Emerald-cut diamond, 1.92 carats; fifty-three fancy diamonds, 5.68 carats; three hundred seventy diamonds, 11.61 carats; platinum mounting.

97. DIAMOND BRACELET

600- Two emerald-cut diamonds, 1.82 carats; twenty-eight fancy diamonds, 1.97 carats; five hundred twenty-eight round diamonds, 16.25 carats; platinum mounting.

98. DIAMOND BRACELET

150- Two marquise diamonds, 1.60 carats; eight baguette diamonds, .38 carat; twenty marquise diamonds, 5.50 carats; two hundred forty-eight round diamonds, 11 carats; platinum mounting.

99. DIAMOND BRACELET

200- Three baguette diamonds, .94 carat; thirty-six fancy diamonds, 1.94 carats; one hundred thirty-eight round diamonds, 3.17 carats; platinum mounting.

100. CARVED EMERALD AND DIAMOND BRACELET

750- Two genuine carved emeralds, 23.89 carats; thirty-six baguette diamonds, 4.39 carats; two hundred seventy-six round diamonds, 10.24 carats; platinum mounting.

101. DIAMOND BRACELET

800- Three marquise diamonds, 1.60 carats; eighteen marquise diamonds, 1.90 carats; thirty baguette diamonds, 1.25 carats; three hundred sixty-six round diamonds, 13 carats; platinum mounting.

102. EMERALD-CUT DIAMOND RING

500-

Emerald-cut diamond, 3.44 carats, and two baguette diamonds; platinum setting.

103. DIAMOND BRACELET

845-

One emerald-cut diamond, 1.64 carats; thirty-six baguette diamonds, 2.42 carats; two hundred sixty-two round diamonds, 5.40 carats; platinum mounting.

104. DIAMOND RING

450-

Perfect round diamond, 2.59 carats, and two baguette diamonds; platinum mounting.

105. SQUARE-CUT DIAMOND RING

300-

Weight 2.93 carats; platinum mounting.

106. DIAMOND BRACELET

345-

Six round diamonds, 3.75 carats, and one hundred fifty-six round diamonds, 4.75 carats; platinum mounting.

107. CRYSTAL AND DIAMOND BROOCH

450-

Three baguette diamonds, .80 carat; fourteen baguette diamonds, 1.78 carats; one hundred twenty-eight round diamonds, 6.76 carats; platinum mounting.

108. DIAMOND AND EMERALD BRACELET

375-

Three baguette diamonds, .64 carat; three hundred fifty-four round diamonds, 4.84 carats; twelve genuine calibre emeralds; platinum mounting.

109. DIAMOND, EMERALD, AND ONYX BRACELET

300-

Three marquise diamonds, 1.25 carats; one hundred five round diamonds, 3.50 carats; twenty-four genuine colored stones; platinum mounting.

110. DIAMOND BRACELET

350-

Three marquise diamonds, .55 carat; six baguette diamonds, .73 carat; one hundred ninety-eight round diamonds, 7.35 carats; platinum mounting.

111. DIAMOND WATCH BRACELET

Fourteen baguette diamonds, 1.28 carats, and one hundred eighty-seven round diamonds, 2.14 carats. Seventeen-jewel movement; platinum mounting.

400-

112. DIAMOND, PEARL, AND BLACK ONYX WRIST WATCH

Ninety-eight diamonds and twelve genuine pearls. Platinum setting; seventeen-jewel movement.

150-

113. DIAMOND COLLAR

One pear-shaped diamond, .50 carat; one baguette diamond, .10 carat; one hundred seventy-eight round diamonds, 3.02 carats; platinum mounting.

40-

114. DIAMOND WRIST WATCH

Four baguette diamonds and sixty-two round diamonds. Seventeen-jewel movement; platinum case.

110-

115. DIAMOND WRIST WATCH

Fourteen baguette diamonds and fifty round diamonds; four onyx ends. Seventeen-jewel movement; platinum case.

40-

116. DIAMOND WRIST WATCH

Twenty-six diamonds. Seventeen-jewel movement; platinum case.

60-

117. DIAMOND POCKET WATCH

Forty-four round diamonds. Seventeen-jewel movement; platinum case.

60-

[END OF FIRST SESSION]

Total " " \$ 34,762.50



Second Session

Friday, December 9, 1932, at 2:15 p. m.

Catalogue Numbers 118 to 231 Inclusive

118. DIAMOND WEDDING RING

45- Thirty-one round diamonds; platinum mounting.

119. DIAMOND SOLITAIRE RING

60- One centre diamond, .70 carat, six small diamonds and four sapphires; platinum setting.

120. DIAMOND AND PLATINUM SAUTOIR CHAIN

95- Containing twenty-one round diamonds.

121. DIAMOND WRIST WATCH

100- Six marquise diamonds and forty-eight round diamonds. Seventeen-jewel movement; platinum case.

122. DIAMOND POCKET WATCH

Just Containing forty-four round diamonds; platinum case.

123. DIAMOND WRIST WATCH

90- Two square diamonds, four baguette diamonds, and fifty round diamonds. Seventeen-jewel movement; platinum case.

124. DIAMOND AND ONYX POCKET WATCH

80- Containing sixty-two round diamonds. Seventeen-jewel movement; platinum case.

125. DIAMOND WRIST WATCH

00- Four fancy diamonds, .47 carat, and sixty-six round diamonds, .34 carat. Seventeen-jewel movement; platinum case.

126. EMERALD AND DIAMOND RING

110- One genuine carved emerald and twenty-four round diamonds; platinum setting.

110- 127. DIAMOND PENDANT

Three large diamonds and fifty-seven small diamonds; platinum setting.

115- 128. DIAMOND WRIST WATCH

Fifty-eight round diamonds, eight baguette diamonds, and two half-moon diamonds. Seventeen-jewel movement; platinum case.

Out 129. ORIENTAL PEARL NECKLACE WITH DIAMOND CLASP

Ninety genuine Oriental graduated pearls; platinum clasp containing one square diamond, two marquise diamonds, and ten round diamonds.

150- 130. DIAMOND WRIST WATCH

Six fancy diamonds, .89 carat, and seventy-four round diamonds, .61 carat. Seventeen-jewel movement; platinum case.

140- 131. DIAMOND BRACELET

Twelve marquise diamonds, .68 carat, and sixty round diamonds, .98 carat; platinum mounting.

110- 132. DIAMOND AND SAPPHIRE OBLONG PIN

Fifty diamonds and forty-five genuine sapphires; platinum mounting.

170- 133. DIAMOND AND EMERALD CIRCLE BROOCH

Sixty-two round diamonds and forty genuine emeralds; platinum setting.

180- 134. DIAMOND RING

One round diamond, 1.11 carats, and two baguette diamonds; platinum mounting.

160- 135. SAPPHIRE RING

One genuine Oriental sapphire, approximately 5.50 carats, set in a platinum mounting containing four marquise diamonds and twenty-four round diamonds.

136. SAPPHIRE AND DIAMOND BRACELET

Six marquise diamonds, 1.46 carats, and seventy-two round diamonds, 2.24 carats; thirty-six calibre sapphires; platinum mounting.

110-

137. DIAMOND CLIP BROOCH COMBINATION

Sixteen baguette diamonds, 1.79 carats, and seventy-eight round diamonds, 2.02 carats; platinum mounting.

150-

138. DIAMOND PIN

One triangle diamond and eighty-one round diamonds; platinum mounting.

75-

139. DIAMOND RING

Set with four diamonds and four sapphires; platinum mounting.

used

140. DIAMOND, EMERALD, AND ONYX BROOCH

Containing eighty-two round diamonds, six genuine emeralds, and ten onyxes; platinum setting.

150-

141. DIAMOND PENDANT

One hundred seven round diamonds, 4 carats, and four baguette diamonds, .30 carat; platinum mounting.

2nd

142. DIAMOND WATCH BRACELET

One hundred eleven round diamonds, 3.73 carats, set in a fine platinum mounting.

45-

143. DIAMOND CLIP BROOCH COMBINATION

Twenty-four baguette diamonds, 2.01 carats, and eighty-eight round diamonds, 2.41 carats; platinum mounting.

10-

144. DIAMOND WATCH BRACELET

Twenty-two fancy diamonds, 1.78 carats, and one hundred seventy-nine round diamonds, 1.93 carats. Seventeen-jewel movement; platinum mounting.

50-

145. EMERALD-CUT DIAMOND RING

One emerald-cut diamond, 1.86 carats; platinum mounting.

150-

146. DIAMOND BOWKNOT PIN

Three baguette diamonds, .71 carat; one hundred twenty-four round diamonds; and eleven small baguette diamonds; platinum setting.

Out

147. DIAMOND WATCH BRACELET

Sixteen baguette diamonds, 2.01 carats, and one hundred eighty-four round diamonds, 2.34 carats. Seventeen-jewel movement; platinum mounting.

475-

148. DIAMOND SOLITAIRE RING

One round diamond, 1.62 carats, and two baguette diamonds; platinum setting.

450-

149. DIAMOND BROOCH

Nine marquise diamonds and one hundred forty-two round diamonds; platinum mounting.

445-

150. DIAMOND RING

One round diamond, 1.86 carats; platinum setting.

300-

151. DIAMOND PENDANT ON PLATINUM CHAIN

The pendant containing one fancy brown heart-shaped diamond, 3.16 carats, and fifty round diamonds; platinum mounting.

475-

152. DIAMOND BRACELET

Three marquise diamonds, .86 carat; twelve marquise diamonds, .72 carat; and one hundred ninety-two round diamonds, 4.76 carats; platinum mounting.

Out

153. DIAMOND WATCH BRACELET

Sixteen baguette diamonds, 1.49 carats; two marquise diamonds, .41 carat; two hundred one round diamonds, 2.11 carats. Seventeen-jewel movement; platinum mounting.

400-

154. DIAMOND WATCH BRACELET

Two baguette diamonds, .17 carat, and one hundred fifty-one round diamonds, 1.69 carats. Seventeen-jewel movement; platinum mounting.

300-

155. PAIR DIAMOND CLIPS

Fourteen fancy diamonds, .97 carat, and one hundred thirty-nine round diamonds, 3.49 carats; platinum mounting.

156. DIAMOND WATCH BRACELET

Twenty-six baguette diamonds, 1.52 carats, and one hundred seventy-three round diamonds, 2.02 carats. Seventeen-jewel movement; platinum mounting.

157. DIAMOND CLIP BROOCH COMBINATION

Twenty-four baguette diamonds, 2.11 carats, and one hundred four round diamonds, 4.59 carats; platinum mounting.

158. EMERALD-CUT DIAMOND RING

One emerald-cut diamond, 2.10 carats, and two baguette diamonds; platinum mounting.

159. STAR SAPPHIRE RING

One genuine Oriental star sapphire, 10.21 carats, and two square-cut diamonds; platinum mounting.

160. CARVED EMERALD AND DIAMOND BROOCH

Genuine carved emerald, 25.70 carats; sixteen marquise diamonds, 2.35 carats; one hundred sixteen round diamonds, 3.69 carats; platinum mounting.

161. PEARL RING

One genuine Oriental pearl, approximately 17 grains, set in a very fine platinum mounting containing eight baguette diamonds.

162. DIAMOND BRACELET

Two marquise diamonds, .41 carat; eighteen marquise diamonds, 1.42 carats; one hundred eighty round diamonds, 4.51 carats; platinum mounting.

163. EMERALD-CUT DIAMOND RING

One emerald-cut diamond, 1.78 carats, and six baguette diamonds, .75 carat; platinum mounting.

164. DIAMOND WATCH BRACELET

450-

Eighteen baguette diamonds, 2.76 carats, and one hundred sixty-three round diamonds, 1.89 carats. Seventeen-jewel movement; platinum mounting.

[See illustration]

165. DIAMOND CLIP BROOCH COMBINATION

400-

Twenty-eight baguette diamonds, 3.57 carats, and one hundred twenty-six round diamonds, 3.22 carats; platinum mounting.

166. DIAMOND AND SAPPHIRE BOWKNOT RING

400-

Centre diamond, 2.85 carats; twenty diamonds and ten genuine sapphires; platinum setting.

167. DIAMOND SOLITAIRE RING

545-

One diamond, 3.35 carats, and two baguette diamonds; platinum setting.

168. THREE-STONE EMERALD RING

700-

Two genuine emeralds, 3.16 carats; one emerald-cut diamond, 2.42 carats; two baguette diamonds; platinum mounting.

169. PEARL AND DIAMOND EARRINGS

500-

Two genuine Oriental pearls, 62.40 grains, and ten fancy diamonds, 1.50 carats; platinum mounting.

170. EMERALD, ONYX, AND DIAMOND BRACELET

400-

Nine marquise diamonds, 1.45 carats; one hundred seventy-six round diamonds, 6.45 carats; twenty-one genuine colored stones; platinum setting.

171. RUBY RING

600-

Genuine Oriental ruby, 11.54 carats, and two baguette diamonds; platinum mounting.

172. DIAMOND BRACELET

845-

Three marquise diamonds, .86 carat; thirty fancy diamonds, 2.75 carats; three hundred round diamonds, 13.46 carats; platinum mounting.



[NUMBER 164]

173. SAPPHIRE RING

650-

One genuine Oriental sapphire, 18.72 carats, and six baguette diamonds; fine platinum mounting.

174. SEED PEARL AND GREEN ONYX CHAIN

400-

Genuine Oriental seed pearls; one hundred thirty-four round diamonds, approximately 2 carats; one genuine pear-shaped pearl drop, 66.88 grains.

175. DIAMOND RING

1050-

One round diamond, 3.63 carats; platinum setting.

176. PAIR DIAMOND CLIPS

675-

Thirty-two baguette diamonds, 3.32 carats; two triangle diamonds, .42 carat; twelve marquise diamonds, 1.86 carats; eighty-six round diamonds, 2.88 carats; platinum mounting.

177. DIAMOND BRACELET

450-

Three marquise diamonds, 1.01 carats; seventy-eight fancy diamonds, 3.97 carats; three hundred twelve round diamonds, 5.69 carats; platinum mounting.

178. DIAMOND RING

900-

One long emerald-cut diamond, 4.20 carats, set in a platinum mounting with six baguette diamonds, 1.50 carats.

179. DIAMOND BRACELET

700-

Three marquise diamonds, 1.06 carats; forty-eight fancy diamonds, 3.57 carats; two hundred seventy round diamonds, 9.75 carats; platinum mounting.

180. EMERALD AND DIAMOND BRACELET

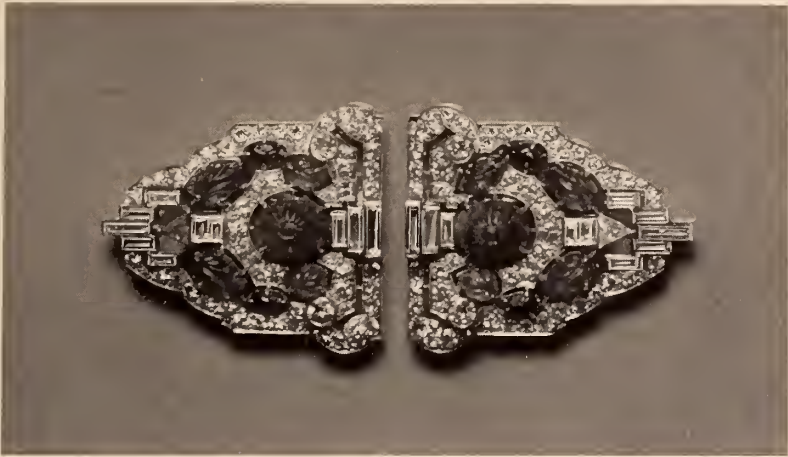
750-

Three genuine emeralds, 5.80 carats; forty-eight fancy diamonds, 2.60 carats; two hundred fifty-two round diamonds, 9.18 carats; platinum mounting.

181. EMERALD BEAD NECKLACE

400-

One hundred nine gem genuine emerald beads, 62.20 carats; clasp with one fine marquise diamond, .29 carat; set in platinum.



[NUMBER 182]

182. DIAMOND, EMERALD, RUBY AND SAPPHIRE CLIP

Twenty-two fancy diamonds, 2.97 carats; one hundred fourteen small diamonds; fourteen genuine carved colored stones, 13.11 carats; platinum mounting.

150-

[See illustration]

183. SQUARE-CUT DIAMOND RING

One square-cut diamond, 3.90 carats, and two baguette diamonds; platinum mounting.

250-

184. RUBY RING

Genuine Oriental ruby, 8.23 carats, and two baguette diamonds; platinum mounting.

600-

185. DIAMOND AND EMERALD WATCH BRACELET

Two pentagon diamonds, 1.12 carats; thirty-six baguette diamonds, 2.88 carats; two marquise diamonds, .11 carat; one hundred sixty round diamonds, 1.73 carats; two genuine emeralds, .25 carat. Seventeen-jewel Pavillion movement; platinum mounting. All the stones are of the finest quality and are set in an unusual and beautiful design; the movement is one of the best made.

700-

186. DIAMOND AND PLATINUM BRACELET

Three hundred thirty-four round diamonds, 6 carats; seventeen baguette diamonds, 2.50 carats; seventeen marquise diamonds, 2 carats; platinum setting.

1400-

187. DIAMOND CLIP BROOCH COMBINATION

Ten marquise diamonds, 1.49 carats; thirty-two baguette diamonds, 6.11 carats; two hundred fifty-two round diamonds, 4.42 carats; platinum mounting.

600-

188. EMERALD AND DIAMOND BRACELET

Three genuine emeralds, 4.55 carats; eighteen marquise diamonds, 1.35 carats; twenty-one baguette diamonds, 2 carats; three hundred seventy-two round diamonds, 16.25 carats; platinum mounting.

800-

189. DIAMOND COLLAR

One hundred sixty-six round diamonds, 2.59 carats; one marquise diamond, .50 carat; three baguette diamonds, .55 carat; platinum mounting.

400-

190. PEARL RING

Genuine Oriental white button pearl, 51.52 grains, and two baguette diamonds, set in a fine platinum mounting.

850-

191. EMERALD RING

Genuine emerald, 4.74 carats, and six fancy diamonds; platinum mounting.

650-

192. MARQUISE DIAMOND RING

Withdrawn
One marquise diamond, 3.35 carats, and two baguette diamonds; platinum mounting.

193. DIAMOND RING

900- One round diamond, 5.96 carats, set in a fine platinum mounting with two baguette diamonds.

194. DIAMOND BRACELET

900- Seventy-five marquise diamonds, 7 carats, and three hundred twenty-two diamonds, 16 carats; platinum mounting.

195. DIAMOND BRACELET

600- Three marquise diamonds, approximately 2 carats; fifty-four marquise diamonds, approximately 3.25 carats; thirty-six baguette diamonds, 5.15 carats; four hundred ninety-two round diamonds, approximately 18.50 carats; platinum mounting.

196. MARQUISE DIAMOND AND EMERALD BRACELET

250- One marquise diamond, 1.85 carats; eight marquise diamonds, 1.10 carats; two baguette diamonds, .15 carat; three hundred ninety round diamonds, 14.10 carats; calibre emeralds; mounted in platinum.

197. DIAMOND RING

400- One fancy brown diamond, 12.25 carats, two large round diamonds, and eighty-two small round diamonds; platinum mounting.

198. RUBY AND DIAMOND BRACELET

900- Three genuine Oriental rubies, 8.40 carats; thirty marquise diamonds, 1.59 carats; three hundred forty-eight round diamonds, 10.76 carats; platinum mounting.

199. DIAMOND BRACELET

800- Three marquise diamonds, 3.28 carats; forty-two marquise diamonds, 5.82 carats; forty-two baguette diamonds, 3.65 carats; three hundred fifteen round diamonds, 13.90 carats; platinum mounting.

200. RUBY AND DIAMOND BRACELET

One genuine Oriental ruby, 8.69 carats; one square diamond, 1.03 carats; thirty-four baguette diamonds, 5.21 carats; twenty marquise diamonds, 4.89 carats; four hundred twenty-six round diamonds, 11.75 carats; thirty-two square diamonds, 1.15 carats; and fifty-six genuine calibre rubies; platinum mounting.

[See illustration]

201. ORIENTAL PEARL NECKLACE

One hundred twenty-three genuine Oriental pearls, 239.84 grains; marquise diamond and platinum clasp. This necklace contains pearls of good quality, beautifully matched and graduated.



[NUMBER 200]

REPRODUCED FROM AN ACCURATE ACTUAL-SIZE
SKETCH OF THE BRACELET

202. DIAMOND BRACELET

One square-cut diamond, 1.95 carats; one emerald-cut diamond, 1.70 carats; one emerald-cut diamond, 1.54 carats; eighty baguette diamonds, 7.41 carats; one hundred ninety-nine round diamonds, 10.87 carats; forty-seven round diamonds, .93 carat; platinum setting.

4700-

[See illustration]

203. DIAMOND AND EMERALD BRACELET

Three square diamonds, 2.85 carats; sixty-six baguette diamonds, 6.04 carats; six genuine emeralds, 1.55 carats; sixty calibre emeralds; four hundred eighty round diamonds, 16.04 carats; platinum mounting.

4300-

204. DIAMOND BRACELET

Three hundred thirty-six round diamonds, 16 carats, and forty-nine baguette diamonds, 18 carats; platinum mounting.

4700-

205. DIAMOND BRACELET

Ninety baguette diamonds, 12 carats; three marquise diamonds, 2.75 carats; six triangle diamonds, 1 carat; twelve marquise diamonds, 1 carat; four hundred nine round diamonds, 27 carats; set in a fine platinum mounting.

4700-

206. STRAIGHT-LINE BAGUETTE AND ROUND DIAMOND BRACELET

Fifteen round diamonds, approximately 14.50 carats, and thirty baguette diamonds, 7.28 carats. Unusual bracelet, featuring fine stones, set in a platinum mounting.

3400-

207. SAPPHIRE RING

Fine genuine Oriental sapphire, 23.20 carats, set in a beautiful platinum mounting with two large trapeze-shaped diamonds, two bullet-shaped diamonds, and eight small round diamonds.

1700-

208. DIAMOND BRACELET

Two emerald-cut diamonds, 2.49 carats; thirty-six fancy diamonds, 3.23 carats; three hundred sixty round diamonds, 15.29 carats; platinum mounting.

1450-



[NUMBER 202]

209. DIAMOND BRACELET

1550-

Three marquise diamonds, 2.17 carats; twelve fancy diamonds, 2.94 carats; two hundred fifty-two round diamonds, 16.32 carats; platinum mounting.

210. DIAMOND BRACELET

1550-

Thirty-six baguette diamonds, 2.75 carats; three marquise diamonds, 2.65 carats; thirty-six marquise diamonds, 2.25 carats; three hundred eighteen round diamonds, 17.60 carats; set in a fine platinum mounting.

211. RUBY RING

1100-

One genuine Oriental cabochon ruby, 8.18 carats; twenty-four round diamonds and two baguette diamonds; platinum mounting.

212. DIAMOND BRACELET

1400-

Eighty-four fancy diamonds, 3.30 carats; three marquise diamonds, 2.10 carats; three hundred twenty-four round diamonds, 10.66 carats; platinum mounting.

213. EMERALD-CUT DIAMOND RING

1000-

Emerald-cut diamond, 3.03 carats, and two baguette diamonds; platinum mounting.

214. EMERALD AND DIAMOND BRACELET

1725-

Three genuine emeralds, 3.46 carats; twenty-two fancy diamonds, 1.93 carats; five hundred fourteen round diamonds, 16.61 carats; platinum mounting.

215. DIAMOND AND EMERALD BRACELET

1150-

Thirty round diamonds; five baguette diamonds, approximately 2.50 carats; twenty-four baguette diamonds; forty-eight genuine emeralds; platinum mounting.

216. DIAMOND BRACELET

Out

Three marquise diamonds, .85 carat; eighteen marquise diamonds, 2.13 carats; thirty baguette diamonds, 1.96 carats; two hundred eighty-eight round diamonds, 5.57 carats; platinum mounting.

217. DIAMOND BRACELET

750- Three marquise diamonds, 1.39 carats; twenty-one marquise diamonds, 1.43 carats; two hundred fifty-six round diamonds, 6.17 carats; platinum mounting.

218. DIAMOND BRACELET

00- Three marquise diamonds, .67 carat; thirty marquise diamonds, 3.31 carats; three hundred eighteen round diamonds, 4.82 carats; platinum mounting.

219. DIAMOND RING

50- Perfect round diamond, 2.37 carats, set in a fine platinum mounting with four baguette diamonds.

220. DIAMOND BROOCH

50- Sixteen baguette diamonds, 2.29 carats, and two hundred twenty-four round diamonds, 5.36 carats; platinum mounting.

221. DIAMOND BRACELET

Y5- Twenty-seven baguette diamonds, 2.91 carats, and two hundred forty-six small round diamonds; platinum setting.

222. DIAMOND BRACELET

700- Three marquise diamonds, .97 carat; forty-two fancy diamonds, 3.04 carats; one hundred eighty-six round diamonds, 6.14 carats; platinum mounting.

223. DIAMOND BRACELET

Y5- Three marquise diamonds, 1.02 carats; sixty-six fancy diamonds, 3.74 carats; two hundred fifty-two round diamonds, 9.06 carats; platinum mounting.

224. DIAMOND AND RUBY BRACELET

Y5- Three marquise diamonds, 2.41 carats; three hundred sixty-five round diamonds, 6.39 carats; eighteen genuine calibre rubies; platinum setting.

225. ONYX AND DIAMOND CLIP PIN

450- One large genuine onyx centre; one large round diamond, approximately 1.65 carats; one hundred thirty-two round diamonds, approximately 4.50 carats; thirteen baguette diamonds, approximately 1 carat; eight genuine Oriental pearls; fine platinum mounting.

226. DIAMOND BRACELET

450- Three baguette diamonds, 1.04 carats; eighteen marquise diamonds, .72 carat; two hundred eighteen round diamonds, 3.31 carats; platinum mounting.

227. DIAMOND PENDANT WATCH

150- Seventy-nine small diamonds, one round diamond, and five sapphires. Seventeen-jewel movement; platinum mounting.

228. DIAMOND WRIST WATCH

115- Two diamond-shaped diamonds and ninety round diamonds. Seventeen-jewel movement; platinum case.

229. DIAMOND WRIST WATCH

135- Thirty-two round diamonds, six marquise diamonds, and sixteen baguette diamonds. Seventeen-jewel movement; platinum case.

230. DIAMOND WRIST WATCH

140- Eight marquise diamonds, .46 carat, and sixty-eight round diamonds, .76 carat. Seventeen-jewel movement; platinum case.

231. DIAMOND WRIST WATCH

85- Forty-two round diamonds, four baguette and four triangle diamonds. Seventeen-jewel movement; platinum case.

[END OF SECOND SESSION]

Total " " \$72,695-
32

Third and Last Session

Saturday, December 10, 1932, at 2:15 p.m.

Catalogue Numbers 232 to 350 Inclusive

232. DIAMOND WEDDING RING

0- Thirty-eight round diamonds; platinum mounting.

233. PLATINUM RING

0- One diamond, .37 carat, and two round diamonds, in a platinum mounting.

234. DIAMOND AND EMERALD DINNER RING

0- Twenty-three diamonds and eight genuine emeralds; platinum mounting.

235. DIAMOND WRIST WATCH

5- Six baguette diamonds and fifty-four round diamonds. Seventeen-jewel movement; platinum case.

236. DIAMOND WRIST WATCH

75- Four baguette diamonds and seventy round diamonds. Seventeen-jewel movement; platinum case.

237. DIAMOND WRIST WATCH

nt Sixty-six round diamonds, sixteen baguette diamonds, and four marquise diamonds. Seventeen-jewel movement; platinum case.

238. EMERALD RING

5- One genuine emerald, 1.09 carats, and two baguette diamonds; platinum mounting.

239. DIAMOND, PLATINUM, AND ONYX POCKET WATCH

5- Sixty-two round diamonds; seventeen-jewel movement.

240. DIAMOND CIRCLE BROOCH

0- One marquise diamond, .28 carat, and thirty-six round diamonds, 1.85 carats; platinum setting.

241. EMERALD-CUT DIAMOND RING
One emerald-cut diamond, 1.31 carats, and four baguette diamonds; platinum mounting.
240-
242. DIAMOND BRACELET
One marquise diamond, .15 carat, and eighty round diamonds, 1.28 carats; platinum mounting.
Out
243. BLACK PEAR-SHAPED PEARL SCARF PIN
One genuine Oriental black pear-shaped pearl, 20.12 grains.
300-
244. DIAMOND BRACELET
One marquise diamond, .23 carat, and one hundred sixty-eight round diamonds, 4.28 carats; platinum mounting.
240-
245. DIAMOND FLOWER BROOCH
Nine marquise diamonds, .80 carat; seventy-three round diamonds, and forty colored stones; platinum mounting.
300-
246. DIAMOND PENDANT
Diamond pendant containing one fancy heart-shaped diamond, 3.16 carats, and fifty round diamonds; platinum chain.
Out
247. DIAMOND BRACELET
One marquise diamond, .22 carat, and one hundred sixty round diamonds, 3.89 carats; platinum mounting.
240-
248. EMERALD AND DIAMOND WATCH BRACELET
Six genuine emeralds, .57 carat; twelve marquise diamonds, .57 carat; one hundred eight-six round diamonds, 2.02 carats. Seventeen-jewel movement; platinum mounting.
430-
[See illustration]
249. DIAMOND BRACELET
Three marquise diamonds, .57 carat; twelve marquise diamonds, .86 carat; one hundred ninety-eight round diamonds, 6.03 carats; platinum mounting.
350-



[NUMBER 248]

250. RUBY AND DIAMOND CLIP BROOCH COMBINATION

500-
Six genuine Oriental rubies, 3.33 carats; sixteen baguette diamonds, .92 carat; one hundred twenty-two round diamonds, 3.69 carats; platinum mounting.

251. DIAMOND BRACELET

475-
Three marquise diamonds, .72 carat; twelve baguette diamonds, .68 carat; two hundred sixty-four round diamonds, 5.43 carats; platinum mounting.

252. DIAMOND BRACELET

450-
Two hundred eighty-five round diamonds, 5.34 carats; five marquise diamonds, 1 carat; ten baguette diamonds, .40 carat; platinum mounting.

253. DIAMOND BRACELET

425-
Eight fancy diamonds, 1.14 carats, and two hundred twenty-six round diamonds, 5.69 carats; platinum mounting.

254. FANCY DIAMOND AND EMERALD BROOCH

300-
One genuine pear-shaped and one genuine square-cut emerald, 1.60 carats; thirty-two marquise diamonds, 2.60 carats; four fancy cut diamonds, 1 carat; ninety-seven round diamonds and eight genuine emeralds; mounted in platinum.

255. DIAMOND WATCH BRACELET

460-
Sixteen baguette diamonds, 2.14 carats, and one hundred eighty-nine round diamonds, 2.31 carats. Seventeen-jewel movement; platinum mounting.

256. EMERALD AND DIAMOND CLIP PIN BROOCH COMBINATION

550-
Two genuine cabochon emeralds, 17.45 carats; twenty-two fancy diamonds, 3.08 carats; one hundred two round diamonds, 3.54 carats; platinum mounting.

257. EMERALD AND DIAMOND BRACELET

525-
Three genuine cabochon emeralds, 4.90 carats; eighteen marquise diamonds, 1.31 carats; two hundred seventy-three round diamonds, 6.49 carats; platinum mounting.



[NUMBER 258]

258. STAR SAPPHIRE RING

00- Genuine Oriental star sapphire, 43 carats; platinum mounting set with diamonds.

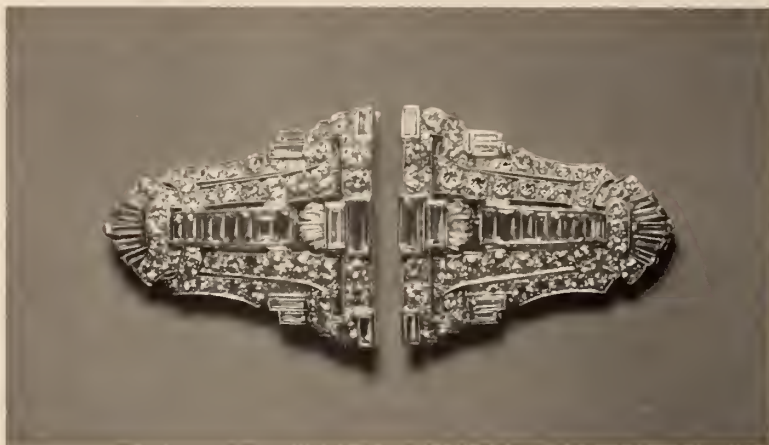
[See illustration]

259. DIAMOND CLIP PIN BROOCH COMBINATION

50- Eighteen baguette diamonds, 1.81 carats, and one hundred and six round diamonds, 4.11 carats; fine platinum mounting.

260. CABOCHON EMERALD RING

50- One genuine cabochon emerald, 33 carats; set in a platinum mounting with ten baguette diamonds, 1.23 carats.



[NUMBER 261]

261. PAIR DIAMOND CLIPS

875-
Fifty-two baguette diamonds, 4.67 carats, and one hundred ten round diamonds, 7.13 carats; platinum setting.

262. DIAMOND BRACELET

725-
Five marquise diamonds, 1.82 carats; twenty baguette diamonds, 1.76 carats; three hundred thirty round diamonds, 7.22 carats; platinum mounting.

263. DIAMOND CLIP BROOCH COMBINATION

550-
Twenty-four baguette diamonds, 3.61 carats; two triangle diamonds, .62 carat; two hundred sixty-eight round diamonds, 9.42 carats; platinum mounting.

264. DIAMOND AND RUBY CLIP PIN BROOCH COMBINATION

600-
One marquise diamond and one genuine Oriental marquise ruby, total weight, 3.47 carats; eighteen marquise diamonds, 1.25 carats; one hundred fifty-eight round diamonds, 4.86 carats; fine platinum mounting.

265. DIAMOND AND EMERALD CLIP PIN BROOCH COMBINATION

-75-
Six genuine emeralds, 1.05 carats; ten baguette diamonds, 1.46 carats; one hundred twenty-six round diamonds, 6.91 carats; fine platinum mounting.

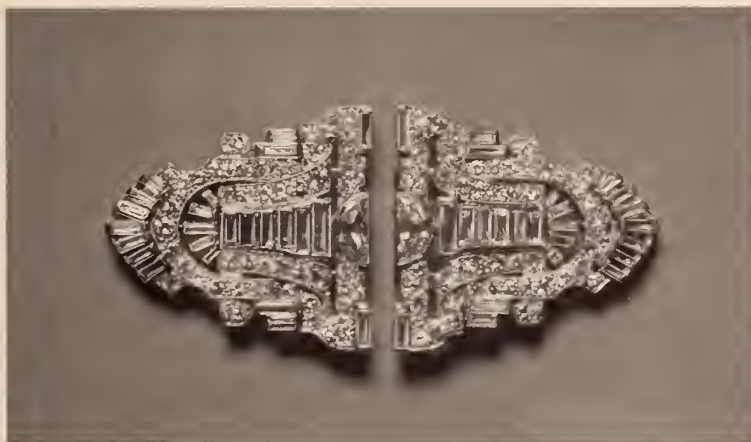
266. LARGE DIAMOND AND PLATINUM BROOCH

900-
One marquise diamond, thirty baguette diamonds, two bullet-shaped diamonds, two half-moon diamonds, and one hundred ninety-six round diamonds; platinum mounting.

267. PAIR DIAMOND CLIPS

75-
Two half moon diamonds, 1.62 carats; twenty-eight baguette diamonds, 2.25 carats; sixteen baguette diamonds, 1.77 carats; four baguette diamonds, .40 carat; ninety-six round diamonds, 4.15 carats; twelve round diamonds, .39 carat; ten round diamonds, .12 carat; platinum mounting.

[See illustration]



[NUMBER 267]

268. DIAMOND WATCH BRACELET

700-
Two pentagon diamonds, .94 carat; eighteen baguette diamonds, 2.29 carats; one hundred seventy round diamonds, 1.87 carats. Seventeen-jewel Mathey Tissot movement; fine platinum mounting.

[See illustration]

269. BLACK PEARL RING

650-
One genuine Oriental black button pearl, 34.32 grains; platinum mounting with two baguette diamonds.

270. RUBY AND DIAMOND CLIP PIN BROOCH COMBINATION

1375-
Twelve genuine Oriental cabochon rubies, 14.49 carats; forty-four baguette diamonds, 5.04 carats; one hundred round diamonds, 3.14 carats; platinum mounting.

271. RUBY RING

850-
Genuine Oriental ruby, 16.56 carats, and two baguette diamonds; platinum mounting.

272. RUBY BEAD NECKLACE

900-
One hundred thirty-three gem genuine Oriental ruby beads, 137 carats; platinum snap with one genuine Oriental ruby and two baguette diamonds.

273. GENUINE EMERALD RING

1400-
Genuine emerald, 3.57 carats, with two baguette diamonds, set in fine platinum mounting.

274. DIAMOND AND PLATINUM BRACELET

1000-
Three diamonds, 2.58 carats, three hundred eighty-nine diamonds, 11 carats; sixteen emeralds and twelve onyxes; platinum setting.

275. EMERALD-CUT DIAMOND RING

1050-
Emerald-cut diamond, 4.55 carats, and two baguette diamonds; platinum setting.



[NUMBER 268]

675-
276. DIAMOND AND EMERALD CLIP PIN BROOCH COMBINATION
Twenty-eight genuine emeralds, 2.25 carats; two fancy shaped genuine emeralds, 1.01 carats; sixteen baguette diamonds, 1.89 carats; one hundred thirty-two round diamonds, 5.81 carats; fine platinum mounting.

845-
277. EMERALD BEAD NECKLACE
Ninety-five fine genuine emerald beads, 94.70 carats; clasp with one fine marquise diamond, .30 carat; set in platinum.

975-
278. DIAMOND PIN
One square-cut diamond, 3.45 carats; twenty marquise diamonds, 2.85 carats; two round diamonds, 1.20 carats; one hundred thirty-four small stones; platinum mounting.

1850-
279. DIAMOND RING
Round diamond, 11.75 carats; set in a fine platinum mounting with two baguette diamonds.

650-
280. DIAMOND BRACELET
Twelve baguette diamonds, 3.40 carats; eighteen square-cut diamonds, 1.13 carats; two hundred fifty-eight diamonds, 11.65 carats; platinum setting.

1050-
281. MARQUISE DIAMOND CHOKER
Seven baguette diamonds, 1.95 carats, and eighty-two marquise diamonds, 12.16 carats; platinum setting.

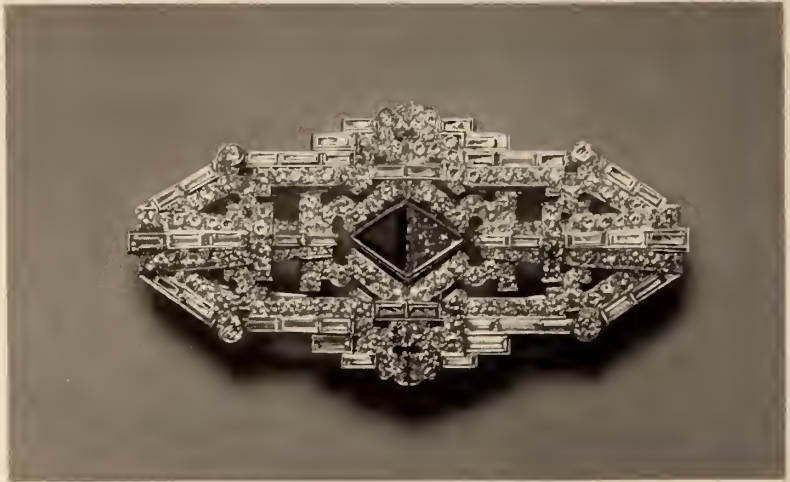
1500-
282. DIAMOND BRACELET
Three fancy shaped diamonds, 3.20 carats; fifty-four baguette diamonds, 4.19 carats; three hundred sixty-seven round diamonds, 12.48 carats; finest quality, set in a beautifully designed platinum mounting.

[See illustration]

1100-
283. DIAMOND AND EMERALD BRACELET
Two marquise diamonds, 1.65 carats; three hundred nineteen round diamonds, 14.82 carats; fifty genuine calibre emeralds; platinum mounting.



[NUMBER 282]



[NUMBER 284]

284. EXQUISITE RUBY AND DIAMOND CLIP
PIN BROOCH COMBINATION

1500-
One triangle diamond and one triangle genuine Oriental ruby, total weight 2.55 carats; forty-two baguette diamonds, 6.14 carats; two hundred fifteen round diamonds, 6.64 carats. Finest quality stones set in platinum mounting of exquisite design.

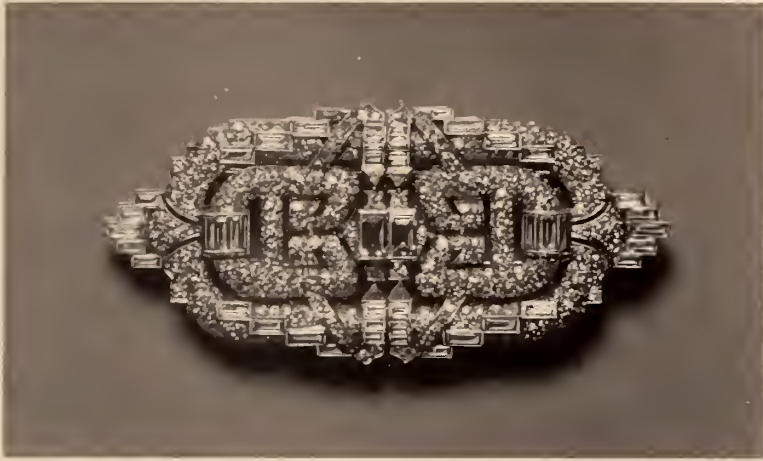
[See illustration]

285. DIAMOND COMBINATION BRACELET AND CLIP CHOKER

1350-
The clip containing thirty-seven round diamonds, .72 carat, and thirteen fancy diamonds, 1.51 carats; the two bracelets consisting of three hundred five round diamonds, 14.35 carats, and forty baguette diamonds, 3.55 carats; platinum mounting.

286. DIAMOND AND EMERALD BEAD BRACELET

1400-
One genuine emerald, 3.22 carats; sixty-four genuine emerald beads, 60.50 carats; one hundred eighty-six round diamonds, 8.09 carats; thirty-eight baguette diamonds, 4.75 carats; fine platinum mounting.



[NUMBER 287]

287. DIAMOND CLIP PIN BROOCH COMBINATION

50- Two baguette diamonds, 1.21 carats; fifty-two fancy diamonds, 4.99 carats; three hundred thirty-two round diamonds, 4.53 carats; fine platinum mounting.

[See illustration]

288. EXQUISITE DIAMOND AND EMERALD CLIP PIN BROOCH COMBINATION

75- Thirty-six genuine emeralds, 2.60 carats; forty-four baguette diamonds, 7.28 carats; two hundred round diamonds, approximately 6.50 carats; platinum mounting.

289. RUBY AND DIAMOND CLIP PIN BROOCH COMBINATION

350- Four genuine Oriental rubies, 5.62 carats; sixty-eight baguette diamonds, 6.31 carats; one hundred eighty-six round diamonds, 6.43 carats; platinum mounting.

290. CABOCHON RUBY AND DIAMOND BRACELET

1575-
Three genuine Oriental cabochon rubies, 14.92 carats; eighteen baguette diamonds, 1.98 carats; and six hundred forty-eight round diamonds, 22.21 carats; platinum mounting.

291. PEAR-SHAPED EMERALD RING

1400-
One genuine pear-shaped emerald, 5.61 carats; set in a fine platinum mounting containing two baguette diamonds.

292. UNUSUAL DIAMOND AND RUBY RING

1000-
One genuine Oriental pear-shaped ruby, 3.52 carats; one pear-shaped diamond, approximately 3 carats. These stones are of fine quality and set in a platinum mounting with four baguette diamonds and thirty-two round diamonds.

293. DIAMOND BRACELET

1500-
Four marquise diamonds, 3.26 carats; sixty-eight baguette diamonds, 5.57 carats; four hundred and eight round diamonds, 24.74 carats; platinum setting.

294. DIAMOND BRACELET

1150-
Three marquise diamonds, 2 carats; twenty-four marquise diamonds, 4 carats; five hundred ten diamonds, 22 carats; platinum mounting.

295. RUBY AND DIAMOND BRACELET

1450-
Three Oriental rubies, 9.46 carats; six baguette diamonds, 1 carat; thirty marquise diamonds, 2.50 carats; four hundred eighty-three diamonds, 19 carats; platinum mounting.

296.-STRAIGHT-LINE EMERALD AND BAGUETTE

DIAMOND BRACELET

150- Twelve genuine cabochon emeralds, 33.55 carats, and twenty-four baguette diamonds, 4.87 carats. Unusual bracelet, in platinum mounting.

297. DIAMOND BRACELET

000- Three emerald-cut diamonds, 4.20 carats; ninety-two fancy diamonds, 5.35 carats; four hundred eighty round diamonds, 14.33 carats; fine platinum mounting.

298. RUBY RING

600- One fine genuine Oriental ruby, 16.85 carats; set in a platinum mounting with two baguette diamonds.

[See illustration]



[NUMBER 298]

299. DIAMOND BRACELET

3000-
Three hundred eighteen round diamonds, 23 carats, and sixty-nine baguette diamonds, 18.50 carats; platinum mounting.

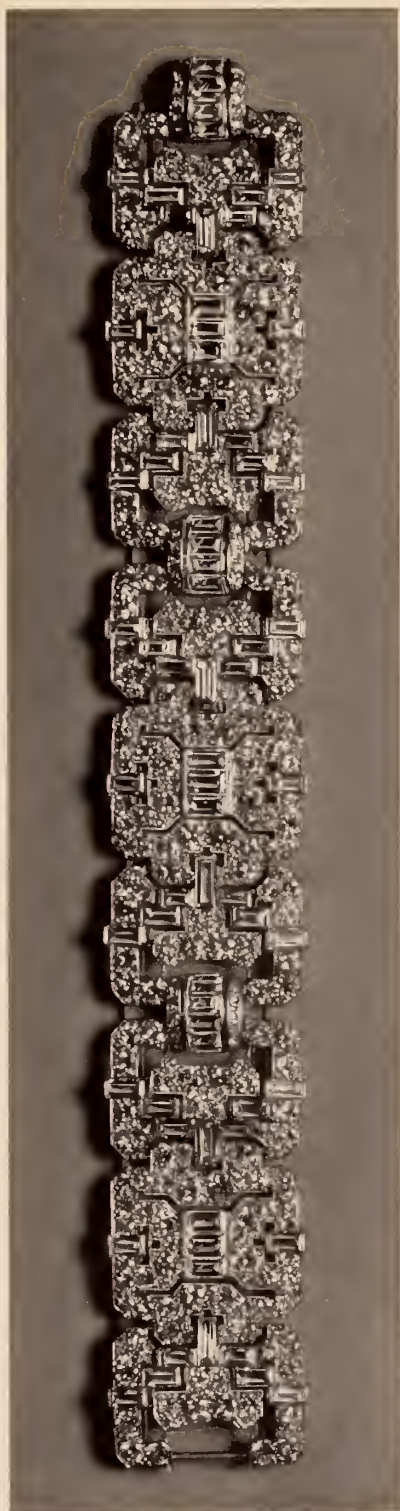
[See illustration]

300. PEAR-SHAPED DIAMOND RING

1900-
One gem pear-shaped diamond, 5.91 carats; set in a fine platinum mounting with two baguette diamonds.

301. DIAMOND BRACELET

1550-
Three marquise diamonds, 1.97 carats; thirty-six baguette diamonds, 3.59 carats; seven hundred fifty-seven round diamonds, 14.65 carats; platinum mounting.



[NUMBER 299]

302. UNUSUAL EMERALD AND DIAMOND BRACELET

1500-
Forty fine genuine emeralds, 11.39 carats; fifty-two baguette diamonds, 5.92 carats; three hundred four round diamonds, 4.19 carats. Best quality, of exquisite design and in platinum mounting.

[See illustration]

303. GEM GENUINE EMERALD RING

4300-
Gem genuine emerald, 10.07 carats, with two triangle diamonds, in platinum mounting.

304. STRAIGHT-ROW EMERALD BRACELET

4400-
Thirty-two genuine emeralds, 28.89 carats, set in a fine platinum mounting.



[NUMBER 302]

305. DIAMOND BRACELET

2400-
Six square-cut diamonds, 7.35 carats; one hundred eighty baguette diamonds, 13.11 carats; four hundred eighty round diamonds, 13.24 carats; set in a very fine platinum mounting.

[See illustration]

306. PEARL AND EMERALD BEAD NECKLACE

1400-
Forty-one genuine Oriental pearls, 174.40 grains; forty genuine emerald beads, 42.65 carats; marquise diamond snap, .50 carat, in platinum.

307. PEARL RING

1600-
One genuine Oriental pearl, 42.60 grains, set in a fine platinum mounting with forty small round diamonds and two baguette diamonds.

308. EXQUISITE EMERALD AND DIAMOND BRACELET

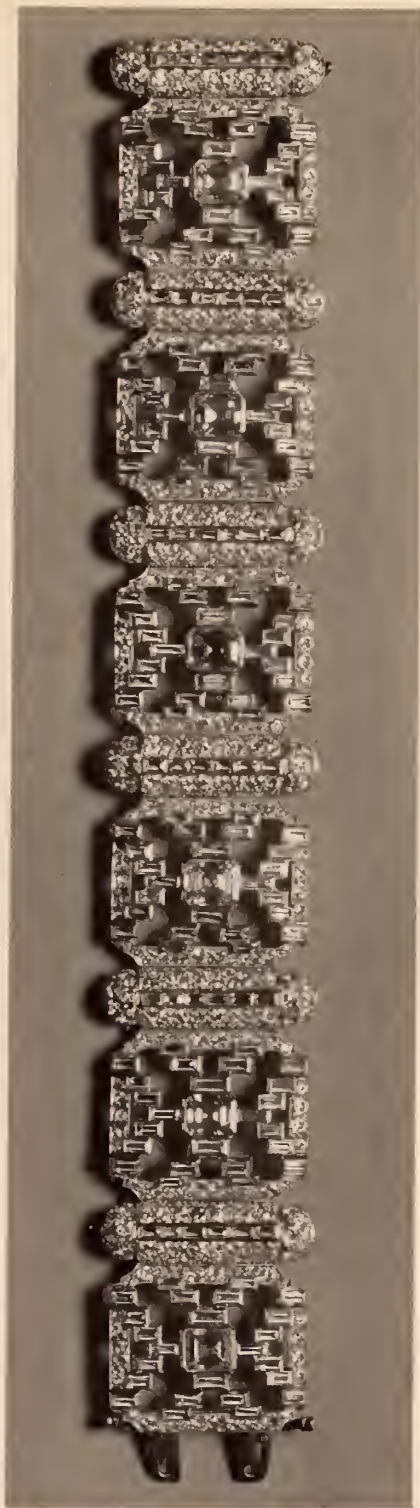
4300-
One genuine gem emerald, 2.32 carats; two pear-shaped diamonds, 2.03 carats; forty-one baguette diamonds, 1.82 carats; forty-eight marquise diamonds, 2.49 carats; three hundred eight round diamonds, 6.16 carats. A bracelet of exquisite design and gem quality, set in a platinum mounting.

309. IMPORTANT DIAMOND BRACELET

1400-
Three marquise diamonds, 2.20 carats; sixty-six baguettes, 4.50 carats; four hundred fifty-six round diamonds, 17.50 carats. This important bracelet is set in a platinum mounting of beautiful design.

310. EMERALD-CUT DIAMOND RING

1800-
Emerald-cut diamond, 6.75 carats; in platinum mounting set with four baguette diamonds and two triangle diamonds.



[NUMBER 305]



[NUMBER 311]

311. PAIR EMERALD AND DIAMOND EARRINGS

Two cabochon emeralds, 18.50 carats; seventy-eight fancy diamonds, fourteen genuine emeralds, and eighteen round diamonds; platinum mounting.

[See illustration above]

312. RUBY AND DIAMOND BRACELET

One fine genuine Oriental ruby, 14.30 carats; twelve fancy diamonds, 3.59 carats; twenty-four genuine calibre rubies; four hundred forty-nine round diamonds, 12.08 carats; platinum mounting.

[See illustration opposite]

4400-

1500-



[NUMBER 312]

REPRODUCED FROM AN ACCURATE ACTUAL-SIZE
SKETCH OF THE BRACELET

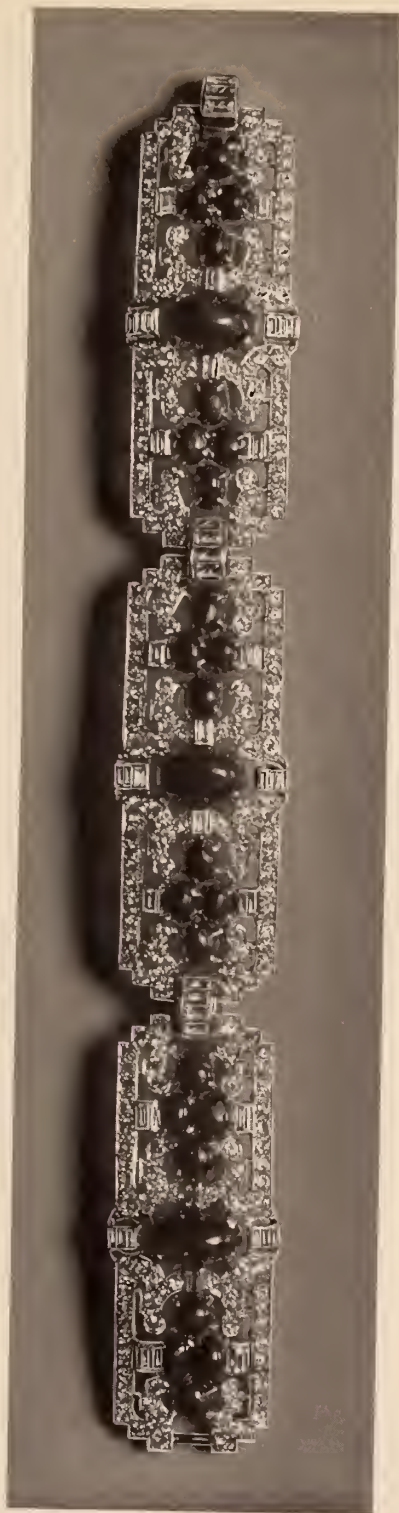
313. UNUSUAL RUBY AND DIAMOND BRACELET

✓400 -
Three genuine Oriental cabochon rubies, 17 carats; twenty-four genuine Oriental cabochon rubies, 20.58 carats; forty-eight baguette diamonds, 4.70 carats; two hundred forty round diamonds, 9.74 carats. Unusual design in fine platinum mounting.

[See illustration]

314. EXCEPTIONAL DIAMOND RING

Out
One gem emerald-cut diamond, 5.48 carats; set in a platinum mounting with small baguette diamonds. This stone is of exceptional color, absolutely perfect, and very brilliant.



[NUMBER 313]

315. IMPORTANT DIAMOND BRACELET

3000 -
Three marquise diamonds, 4.28 carats; twenty-six marquise diamonds, 5.67 carats; one hundred six baguette diamonds, 8.24 carats; five hundred thirty-two round diamonds, 19.25 carats. The platinum mounting is of exquisite design and workmanship and all the diamonds are of the very finest quality.

[See illustration]

316. DIAMOND RING

4300 -
One emerald-cut diamond, 7.67 carats, set in a platinum mounting with two baguette diamonds. This stone is a brilliant well made diamond.

317. UNUSUAL DIAMOND BRACELET

7500 -
Three marquise diamonds, 2.70 carats; fifty-six baguette diamonds, 12.50 carats; four hundred eight round diamonds, 14.58 carats. These stones are of the finest quality, set in a platinum mounting of splendid workmanship and unusual design.



[NUMBER 315]

318. GEM ÉMERALD AND DIAMOND BRACELET

3500-
Three gem genuine emeralds, 4.63 carats; forty baguette diamonds, 5.02 carats; six half-moon diamonds, .90 carat; three hundred fifty round diamonds, 15.40 carats. The platinum mounting is of exquisite design and best workmanship. This is an unusual piece, of exceptional quality.

[See illustration]

319. PERFECTLY MATCHED RUBY AND BAGUETTE DIAMOND BRACELET

Out
Twenty-four genuine gem Oriental rubies, 26.18 carats, and twenty-four baguette diamonds, 7.38 carats. These stones are perfectly matched in shape and color and set in a fine platinum mounting.

320. STRAIGHT-ROW GEM RUBY BRACELET

4400-
Thirty-five gem genuine Oriental rubies, 30.58 carats; gem color, perfectly matched, set in a fine platinum mounting.

320A. SPLENDID STAR SAPPHIRE AND DIAMOND CHOKER

1500-
Featuring a gem genuine Oriental star sapphire, 85.29 carats; fifty-seven fancy diamonds, 9.06 carats; twenty-nine marquise diamonds, 6.74 carats; five hundred eighty-nine round diamonds, 13.96 carats; set in a platinum mounting. The sapphire is of good blue color, with a splendid clear star, and the mounting and diamonds are of the finest quality.

321. UNUSUAL RUBY AND BAGUETTE DIAMOND BRACELET

3700-
One gem genuine Oriental ruby, 5.79 carats; sixteen gem genuine Oriental rubies, 11.95 carats; eighty-nine baguette diamonds, 12.98 carats; all of the finest quality, set in platinum mounting of unusual design.

322. STRAIGHT-ROW FRENCH-CUT DIAMOND BRACELET

3100-
Thirty-nine French-cut diamonds, approximately 27 carats; platinum mounting. These stones are of fine quality and well matched.



[NUMBER 318]

323. IMPORTANT EMERALD-CUT AND BAGUETTE
DIAMOND BRACELET

3400 -
Three emerald-cut diamonds, 4.48 carats; one hundred nine baguette diamonds, 10.65 carats; three hundred seventy-seven round diamonds, 12.79 carats; platinum mounting. This bracelet is of the very best quality as to stones and workmanship of mounting.

324. MAGNIFICENT EMERALD AND DIAMOND COLLAR, CLIP PIN
AND TWO BRACELET COMBINATION

5000 -
One genuine cabochon emerald, 36 carats; one hundred genuine emerald beads, approximately 75 carats; twenty-six baguette diamonds, 3 carats; three hundred ninety-eight round diamonds, 12.78 carats; one genuine cabochon emerald, 1.79 carats. This beautiful collar is set in platinum and can be used as a large diamond-emerald clip pin and two diamond and emerald bead bracelets.

[See illustration]



[NUMBER 324]

325. IMPORTANT SAPPHIRE AND DIAMOND COLLAR

5000-

One gem genuine Oriental cabochon sapphire, 50.60 carats, surrounded by thirty-six baguette diamonds, 4.75 carats, and fourteen round diamonds, .42 carat. This pendant is suspended from a diamond chain containing forty-three large round diamonds, approximately 12 carats, and forty-two baguette diamonds, 6.35 carats. All the material is of the finest quality, set in a beautiful platinum mounting. This is a very important and unusual piece.

[See illustration]

326. PEAR-SHAPED DIAMOND PENDANT, AND DIAMOND CHAIN

3750-

One rare golden brown pear-shaped diamond, 16.43 carats; diamond chain containing nine baguette diamonds, 2.24 carats; one hundred sixty round diamonds, 6.48 carats; platinum mounting. This is a very unusual piece.



[NUMBER 325]

REPRODUCED FROM AN ACCURATE SKETCH OF THE COLLAR
AND SLIGHTLY REDUCED

326A. GEM DIAMOND RING

Gem emerald-cut diamond, approximately 11 carats, set in a platinum mounting with baguette diamonds. This stone is of very fine color, brilliant, and well cut.

Out

327. ORIENTAL PEARL NECKLACE

Ninety-seven genuine Oriental pearls, 258.16 grains; marquise diamond clasp, approximately 2 carats, set in platinum; the pearls are of fine quality, well matched, and beautifully graduated.

6500-

[See illustration]



[NUMBER 327]

328. GEM STRAIGHT-LINE BAGUETTE AND ROUND
DIAMOND BRACELET

6000-
Eleven round diamonds, approximately 22.50 carats, and
twenty-four baguette diamonds, 7.32 carats. Unusual bracelet,
of fine quality and set in a platinum mounting.

[See illustration]



[NUMBER 328]

329. EXCEPTIONAL DIAMOND BRACELET

7400-
One emerald-cut diamond, 6.05 carats; two marquise diamonds, 5.32 carats; seventy-six marquise diamonds, 18.50 carats; seventy-six fancy diamonds, 14.60 carats; two hundred four round diamonds, 9.83 carats; platinum setting.

[See illustration]



[NUMBER 329]

330. IMPORTANT DIAMOND AND EMERALD BRACELET

8000-
One genuine emerald centre stone, approximately 15.50 carats; eight genuine emeralds, approximately 8 carats; seventy-eight baguette diamonds, 24 carats; four hundred round diamonds, 17 carats. This important bracelet is set in a platinum mounting of the finest workmanship and of exquisite design.

[See illustration]

331. PEAR-SHAPED DIAMOND DROP, AND BLACK ONYX AND DIAMOND CHAIN

6500-
One gem pear-shaped diamond of rare quality and size, 11.37 carats; two half-moon diamonds, two baguette diamonds, two hundred fifty-six brilliants, approximately 8 carats. This is a very unusual piece.



[NUMBER 330]

REPRODUCED FROM AN ACCURATE ACTUAL-SIZE
SKETCH OF THE BRACELET

332. ORIENTAL PEARL NECKLACE

11,100 -
Sixty-five genuine Oriental pearls, 465.80 grains; platinum clasp containing one marquise diamond, 1.87 carats, surrounded by genuine calibre emeralds. The pearls are of good quality, well matched, and beautifully graduated from a centre weighing 23.88 grains.

[See illustration opposite]

333. GEM EMERALD RING

14,000 -
One fine gem emerald, 23.95 carats, of rare color, set in platinum mounting with four fancy diamonds, and ten round diamonds. This gem stone is well proportioned, and of fine quality.

[See illustration below]



[NUMBER 333]



[NUMBER 332]

334. ORIENTAL PEARL NECKLACE

19,000-
Sixty-seven genuine gem Oriental pearls, 466.92 grains; platinum snap with two half-moon diamonds and two baguette diamonds. These are beautifully matched pearls, graduated from a 21-grain centre, and of excellent rose color.

[See illustration]

335. GEM EMERALD-CUT DIAMOND RING

14,000-
One gem emerald-cut diamond, approximately 12 carats. This is a perfectly cut, fine quality, clean diamond set in an exquisite platinum mounting with ten fancy shaped diamonds.

336. DIAMOND RING

Out
One fine gem color perfect round diamond, 6.23 carats; set in a fine platinum mounting with two baguette diamonds.

337. UNUSUAL EMERALD-CUT AND BAGUETTE DIAMOND BRACELET

4700-
Three emerald-cut diamonds, 4.34 carats; one hundred ten fancy diamonds, 9.65 carats; three hundred ten round diamonds, 12.36 carats; mounted in platinum. Unusual bracelet.

338. BEAUTIFUL RUBY AND DIAMOND BRACELET

4900-
Three emerald-cut diamonds, 3.20 carats; three gem genuine Oriental rubies, 7.05 carats; forty-two fancy diamonds, 4.48 carats; four hundred seventy-four round diamonds, 11.69 carats; set in a very beautiful platinum mounting.

339. PEARL RING

1400-
One genuine Oriental white button pearl, 29.96 grains; one genuine Oriental black pearl, 26.68 grains; fine platinum mounting containing twelve round diamonds and four baguette diamonds.



[NUMBER 334]

340. GEM EMERALD-CUT DIAMOND RING

One emerald-cut diamond, 5.12 carats, in a platinum mounting with small baguette diamonds. This is a gem stone, well made, and absolutely perfect.

2400-

341. SQUARE-CUT DIAMOND AND EMERALD BROOCH

One square diamond, 1.46 carats; twenty-four fancy diamonds, 4.15 carats; one hundred sixty-six round diamonds, 4.09 carats; and sixteen genuine calibre emeralds; platinum mounting.

1000-

342. PEARL RING

One genuine Oriental black pearl, 26.80 grains, set in a fine platinum mounting with two baguette diamonds.

800-

343. DIAMOND WATCH BRACELET

Containing two pentagon diamonds, 1 carat; eighteen baguette diamonds, 1.92 carats; one hundred forty-three round diamonds, 1.64 carats; platinum mounting of exquisite workmanship and design. The movement is a seventeen-jewel Niton, one of the finest made.

675-

344. DIAMOND CLIP PIN BROOCH COMBINATION

Two pear-shaped diamonds, 1.57 carats; thirty baguette diamonds, 2.31 carats; one hundred twelve round diamonds, 2.38 carats; platinum mounting.

675-

345. MARQUISE DIAMOND RING

One marquise diamond, 2.50 carats, and two baguette diamonds; platinum mounting.

470-

346. BLACK PEARL STUD

One genuine Oriental black pearl, 16.48 grains. This pearl is of fine quality.

400-

347. DIAMOND BRACELET

100 - Three hundred seventy fine round diamonds, approximately 10 carats, set in a very well made flexible platinum mounting.

348. DIAMOND BRACELET

230 - Two marquise diamonds, .45 carat; eight marquise diamonds, 1.30 carats; fourteen baguette diamonds, 1.75 carats; one hundred seventy-two round diamonds, 8.50 carats; platinum mounting.

349. DIAMOND WRIST WATCH

00 - Forty round diamonds and four baguette diamonds. Seventeen-jewel movement; platinum case.

350. BLACK PEARL STUD

100 - One genuine Oriental black pearl, 9.24 grains; white gold mounting.

Total 3rd Session \$ 227,045-

[END OF SALE]

Grand Total \$ 332,502.50



Appraisals

FOR UNITED STATES AND STATE TAX
INSURANCE AND OTHER PURPOSES



Catalogues

OF PRIVATE COLLECTIONS



APPRAISALS. The American Art Association-Anderson Galleries, Inc., will furnish appraisals, made by experts under its direct supervision, of art and literary property, jewelry, and all personal effects, in the settlement of estates, for inheritance tax, insurance, and other purposes.

Upon request the Galleries will furnish the names of many trust and insurance companies, executors, administrators, trustees, attorneys, and private individuals for whom the Galleries has made appraisals which not only have been entirely satisfactory to them, but have been accepted by the United States Estate Tax Bureau, the State Tax Commission, and others in interest.

CATALOGUES. The Galleries is prepared to supplement this appraisal work by making catalogues of private libraries, of the contents of homes or of entire estates, such catalogues to be modeled after the intelligently compiled and finely printed sales catalogues of the Galleries.



AMERICAN ART ASSOCIATION
ANDERSON GALLERIES · INC

30 East 57th Street, New York City

Telephone: PLAZA 3-1269

Composition and Presswork
by



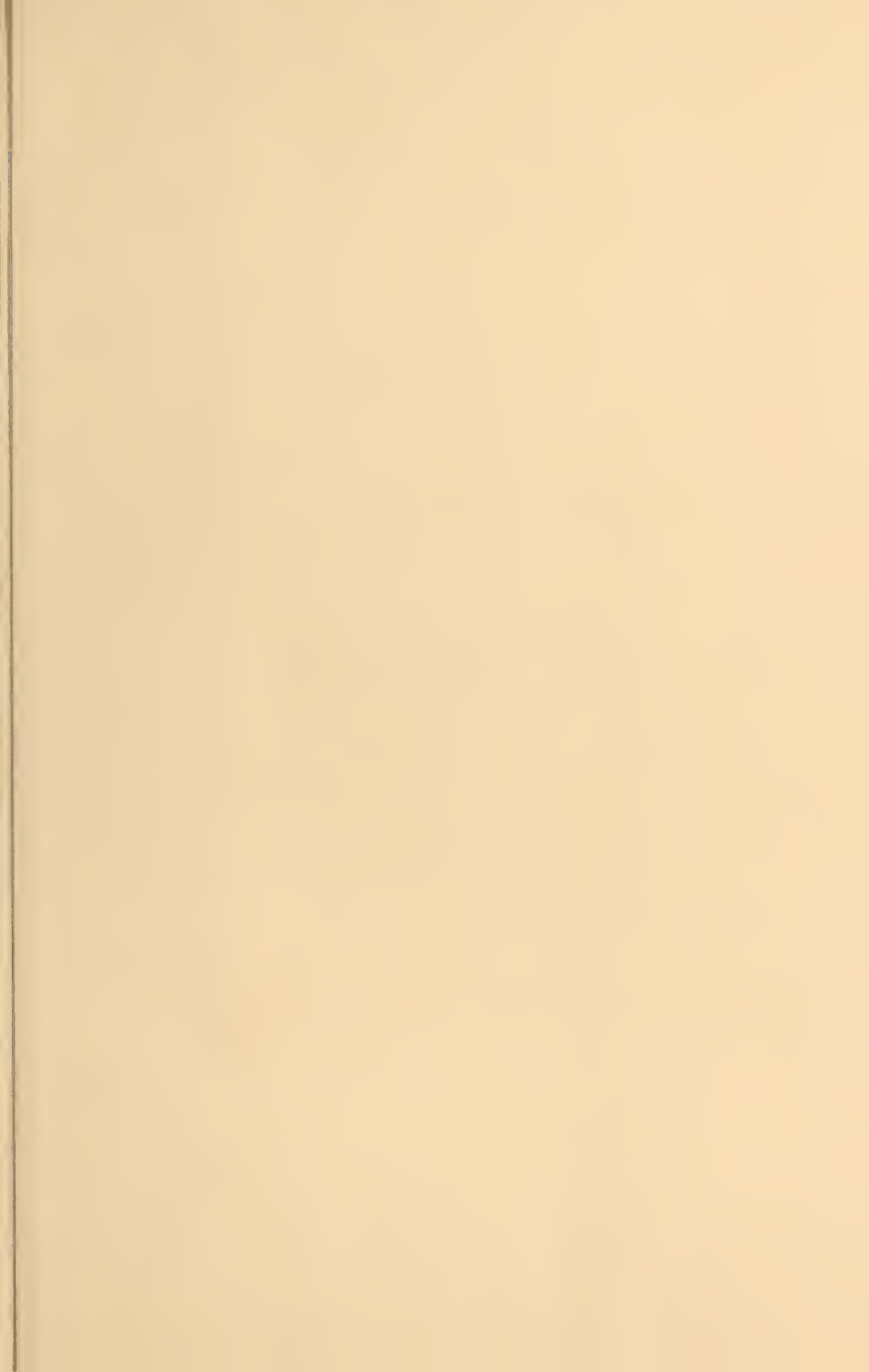
PUBLISHERS PRINTING COMPANY
William Bradford Press
New York

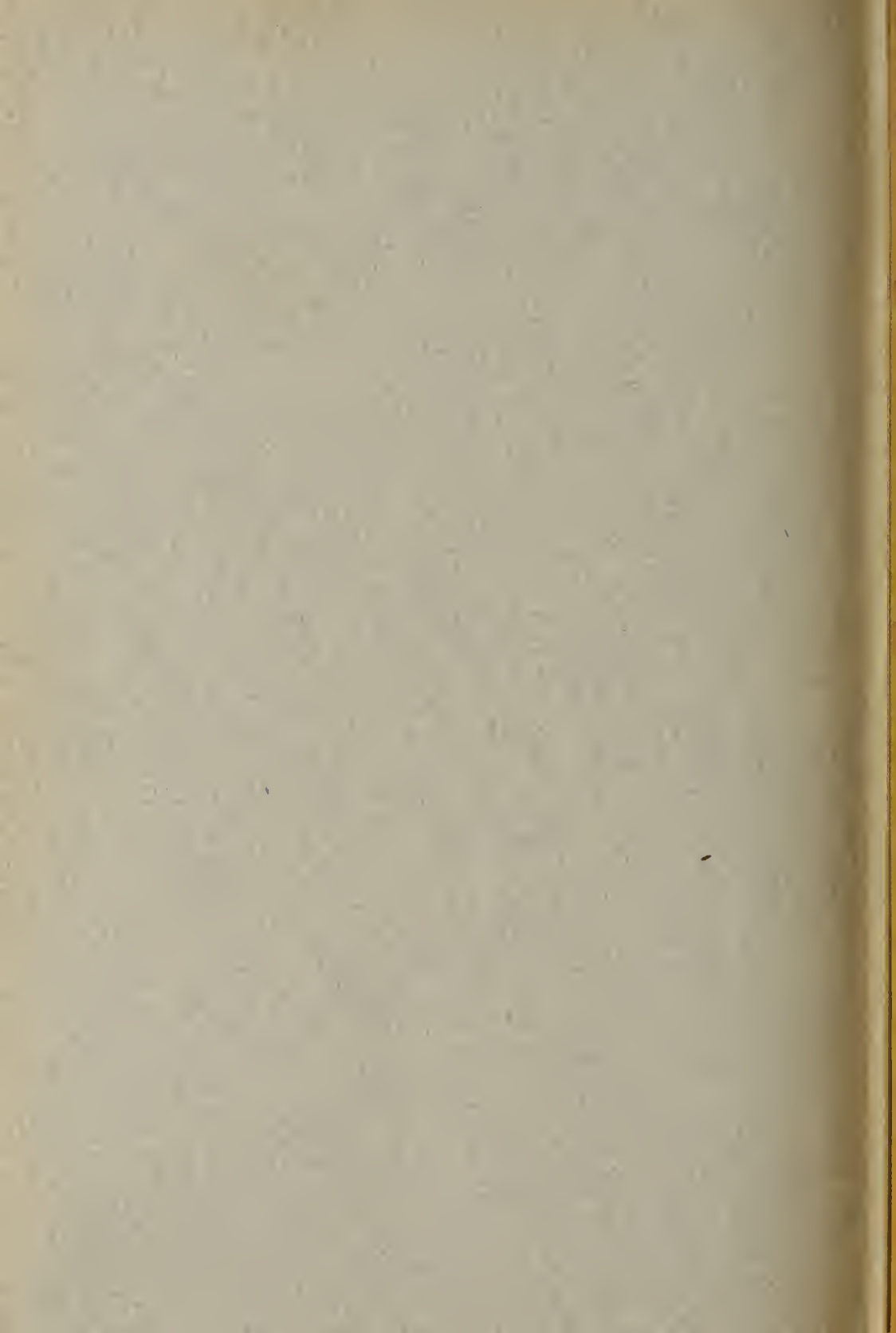




UNSURPASSED WISTARBURG DEEP CLARET
FOOTED PITCHER

[NUMBER 239]





**THE METROPOLITAN
MUSEUM OF ART**

Thomas J. Watson Library

