

LIGHTING

★ 1938 ★

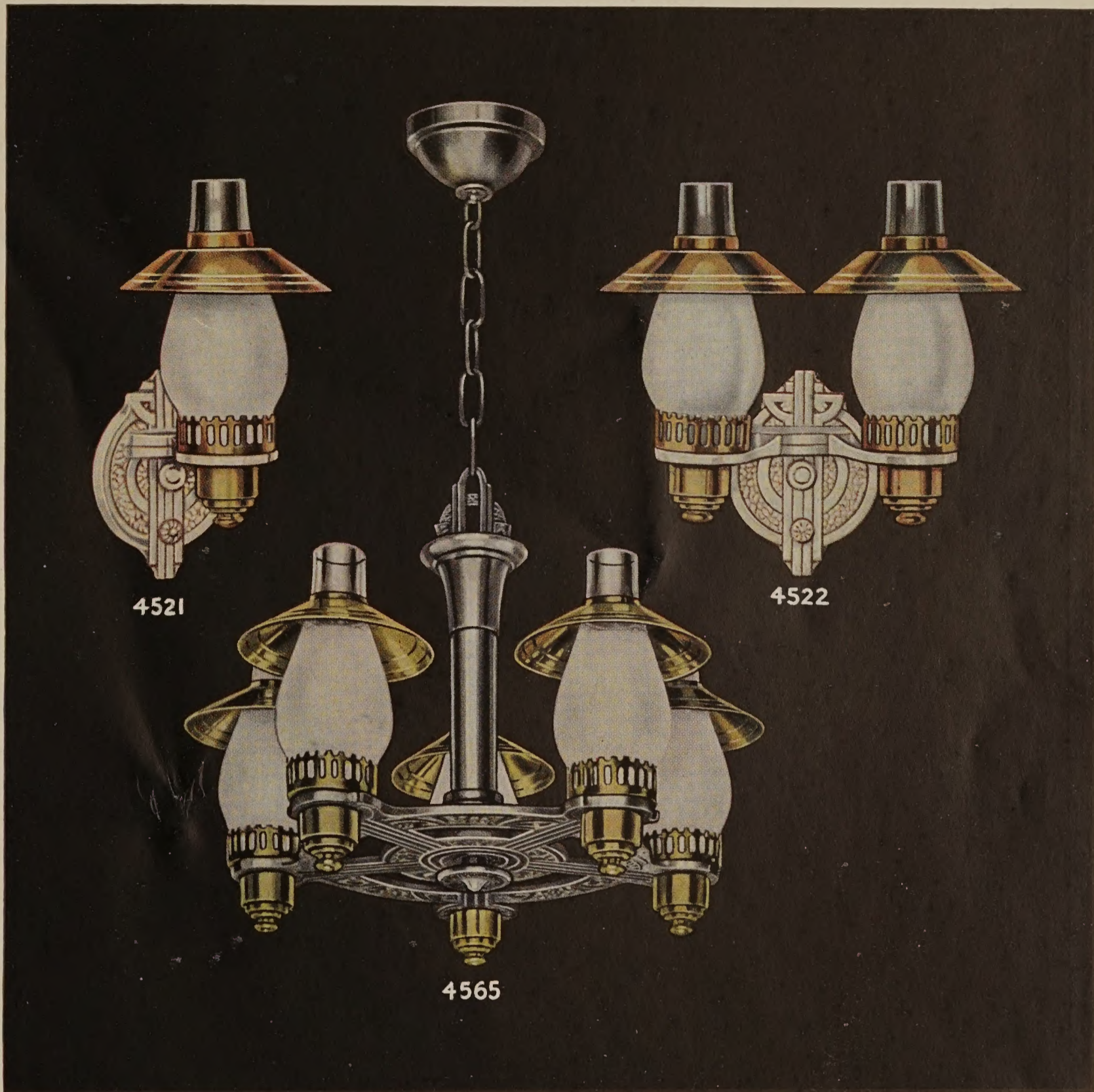
Grahling Bros. Co.

340 EAST 131st STREET (CORNER TAFT AVENUE)

CLEVELAND, OHIO







4521

4522

4565

The 4500 Series

No. G-4521

Back Plate $4\frac{3}{8}$ " x 6"; Extension $6\frac{1}{2}$ "; Packed individually; 6 to case.

Code: Obey

No. G-4522

Back Plate $4\frac{3}{8}$ " x 6"; Extension 6"; Packed individually; 6 to case.

Code: Object

No. G-4565

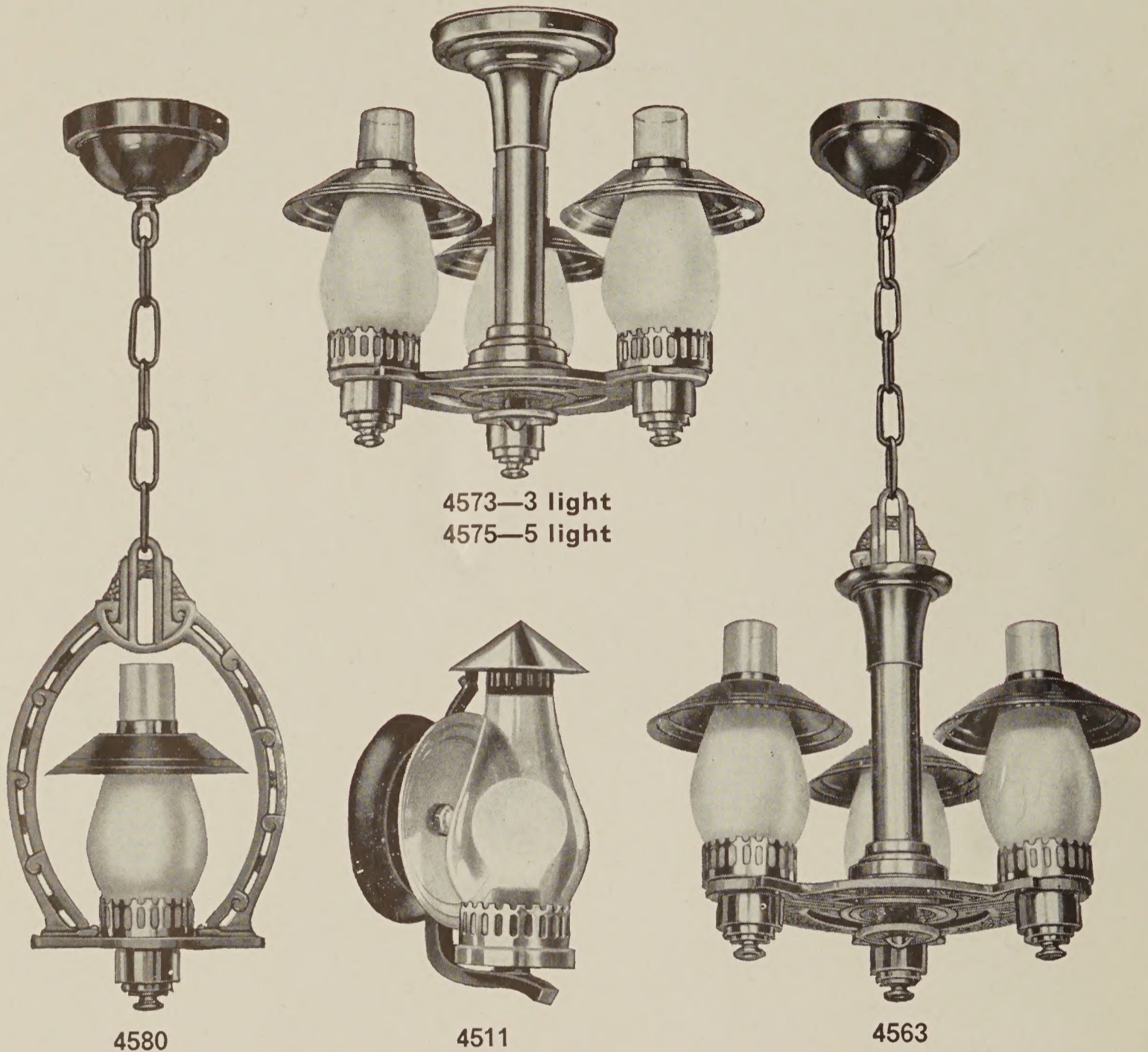
Controlled with 4-way switch; Spread 20"; Packed individually; 4 to unit.

Code: Office

Finishes: Pewter with Brass trim; or Empire White with Gold trim.

Three-fourths Frosted Chimneys.





4573—3 light
4575—5 light

4580

4511

4563

The 4500 Series

No. G-4511B

Length overall 8½"; Extension 5"; Made of Brass with Aluminum arm; Finishes: Colonial Brass with Pewter trim; or Black with Colonial Brass trim; Packed individually; 6 to case. **Code: Oven**

No. G-4563

Spread 15"; Finishes: Pewter with Brass trim; or Empire White with Gold trim; Packed individually; 4 to unit. **Code: Ocean**

No. G-4573

Spread 15"; Finishes: Pewter with Brass trim; or Empire White with Gold trim; Packed individually; 4 to unit. **Code: Opal**

No. G-4575

5 Light Ceiling. Spread 20"; Finishes: Pewter with Brass trim; or Empire White with Gold trim; Packed individually; 4 to unit. **Code: Opera**

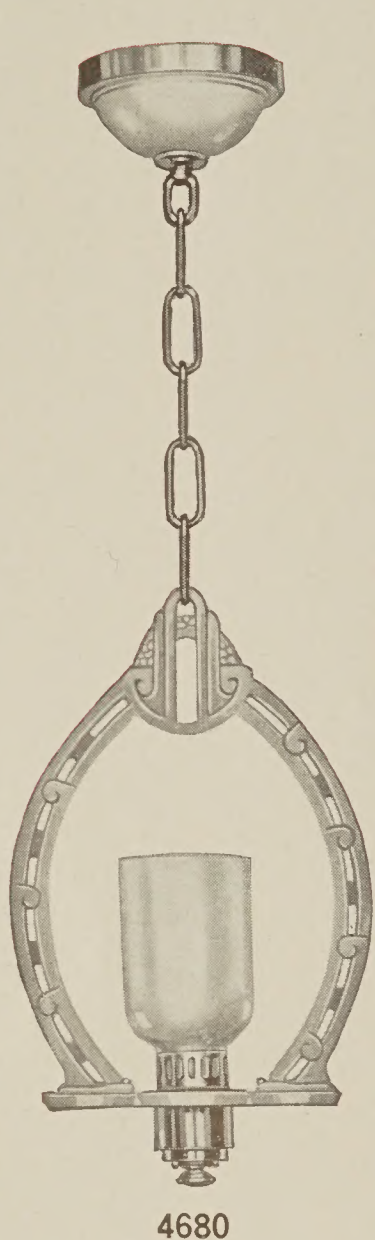
No. G-4580

Spread 8"; Finishes: Pewter with Brass trim; or Empire White with Gold trim; Packed individually; 4 to unit. **Code: Organ**

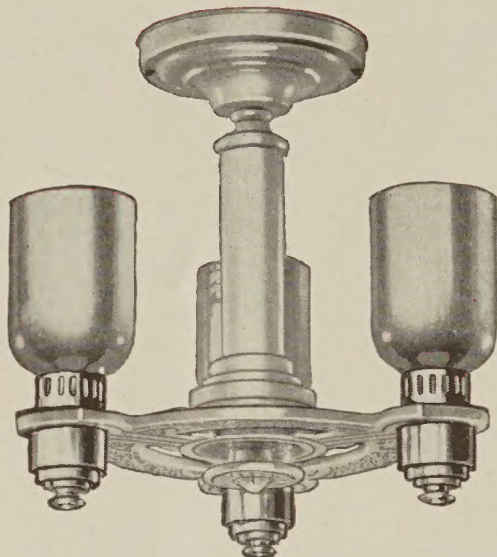
Furnished with three-fourths Frosted Chimneys.





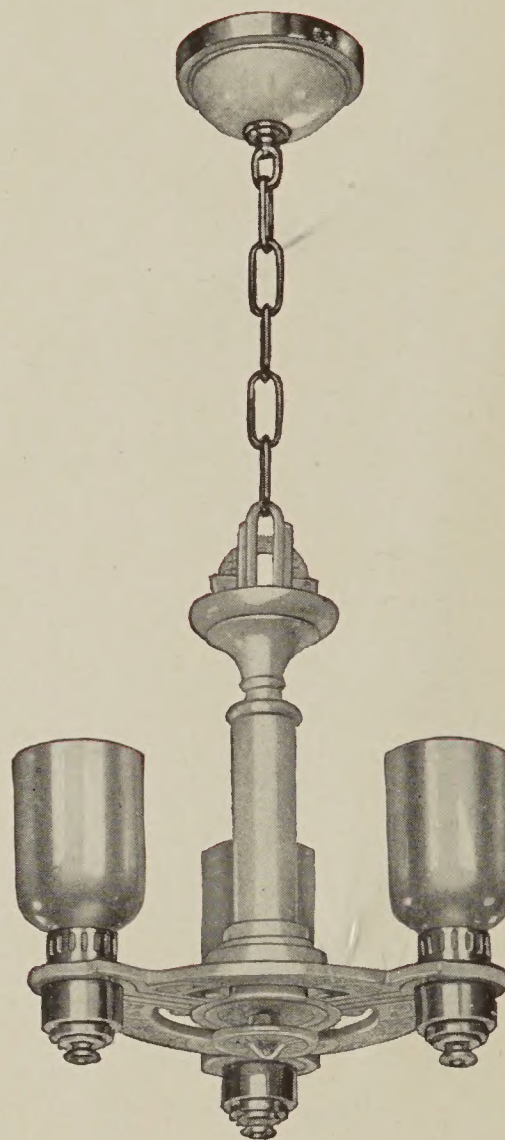


4680



4673—3 light

4675—5 light



4663

The 4600 Series

No. G-4663

Spread 15"; Packed individually; 4 to unit.

Code: Oboe

No. G-4680

Spread 8"; Packed individually; 4 to unit.

Code: Orb

No. G-4673

Spread 15"; Packed individually; 4 to unit.

Code: Oil

No. G-4675

5 Light Ceiling; Spread 18"; Packed individually; 4 to unit.

Code: Old

*Finishes: Pewter with Brass trim; or Empire White with Gold trim.
Tan Iridescent Glass Shades.*





The 4900 Series

No. G-4921

Back 5" x 5"; Extension 6"; Packed individually; Wired with turn knob socket; 6 to case. **Code: Xebec**

No. G-4965

Controlled with 4-way switch; Spread 17"; Packed individually; 4 to unit. **Code: Xenia**

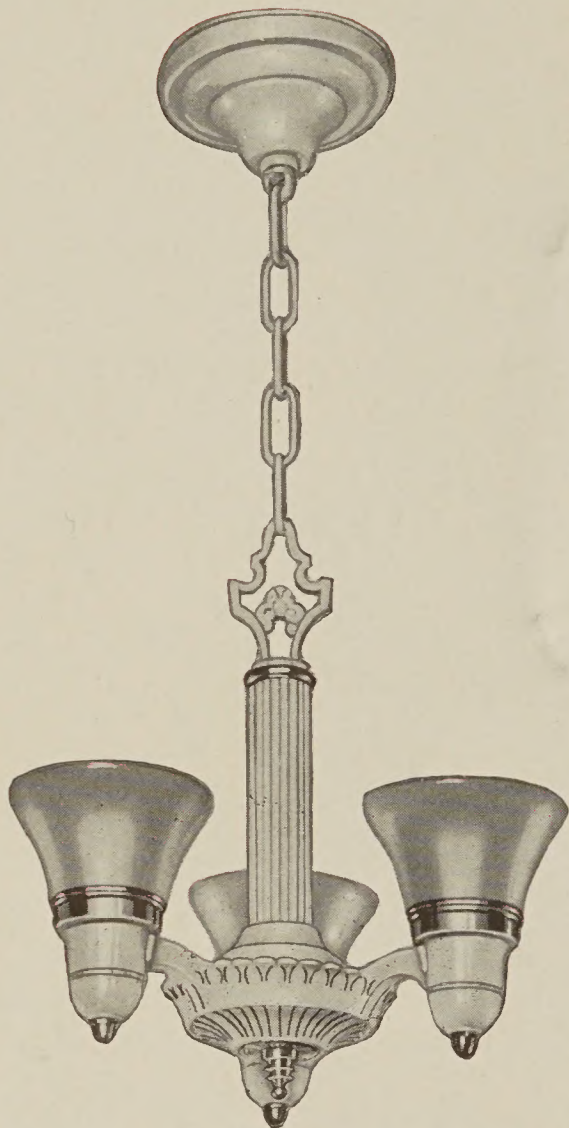
No. G-4973

Spread 14"; Packed individually; 4 to unit.

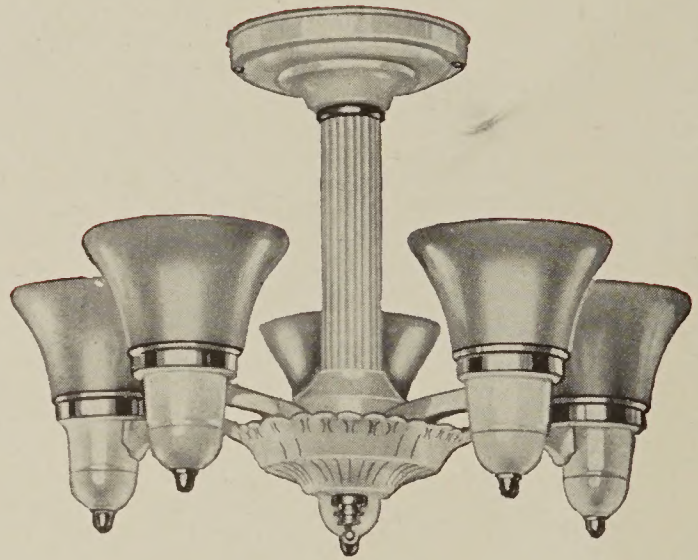
Code: Xylene

Finish: Empire White with Gold trim; Bronze with Chromite trim; or Bronze with Gold trim. Topaz Glass (inside Frosted).





4963



4975

The 4900 Series

No. G-4963

Spread 14"; Packed individually; 4 to unit.

Code: Xyloid

No. G-4975

Spread 17"; Packed individually; 4 to unit.

Code: Xyst

Finish: Empire White with Gold trim; Bronze with Chromite trim; or Bronze with Gold trim. Topaz Glass (inside Frosted).





4821

4822

4865

The 4800 Series

No. G-4821

Back 3½" x 4½"; Extension 5½"; Takes 8 - 3" Crystals; Packed individually; 6 to case. Code: Keeve

No. G-4822

Back 3½" x 4½"; Extension 4½"; Spread 8½"; Takes 16 - 3" Crystals; Packed individually; 6 to case. Code: Kemp

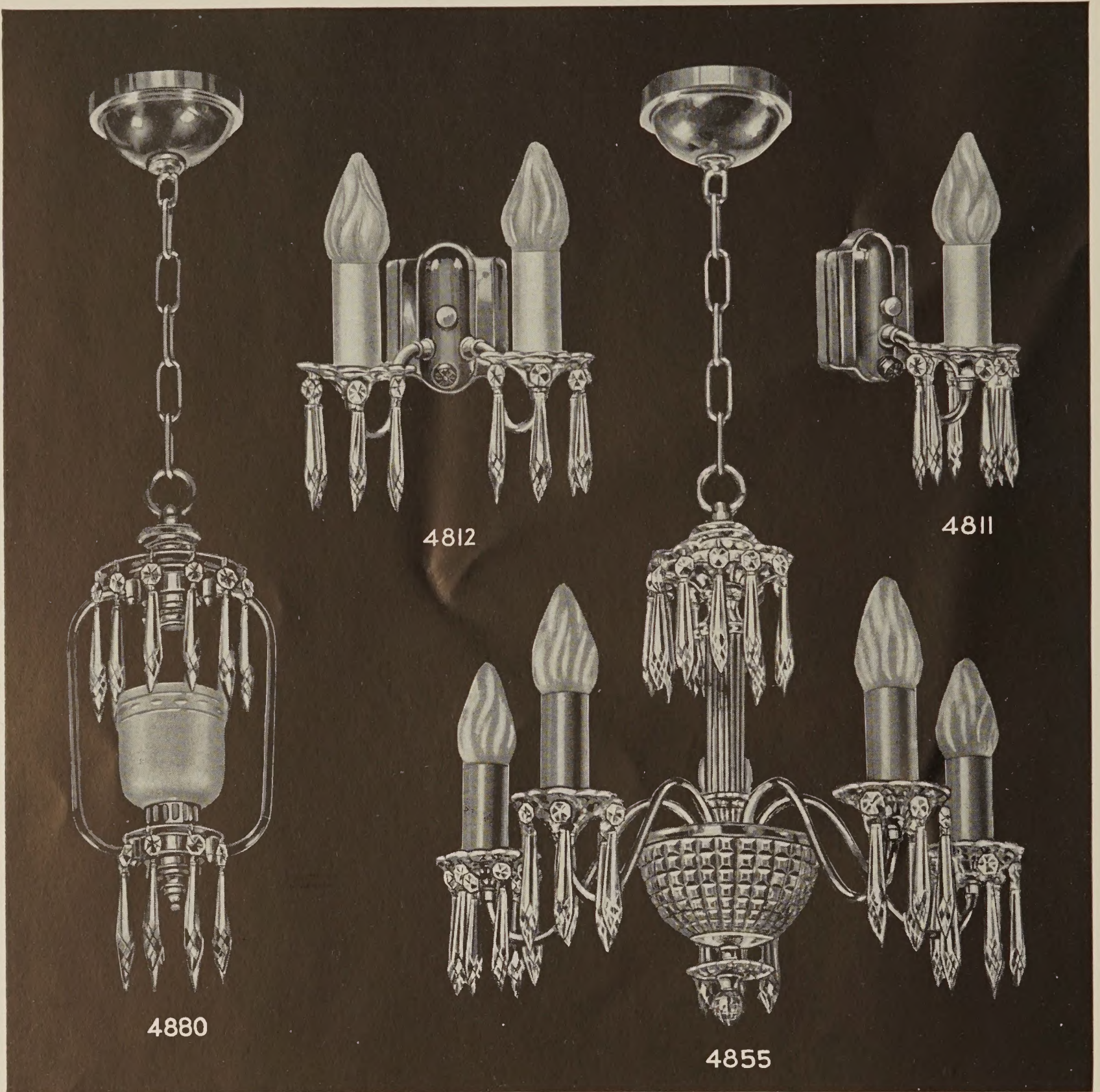
No. G-4865

Spread 18"; Takes 52 - 3" Crystals; Packed individually; 4 to unit. Code: Kerite

Finishes: Colonial Brass; or Chrome. Frosted Cut Shades.

Can be furnished without Crystals.





The 4800 Series

No. G-4811

Back 3½" x 4½"; Extension 5½"; Takes 6 - 3" Crystals; Packed individually; 6 to case. **Code: Kagu**

No. G-4812

Back 3½" x 4½"; Extension 4½"; Spread 8"; Takes 12 - 3" Crystals; Packed individually; 6 to case.

Code: Kale

No. G-4855

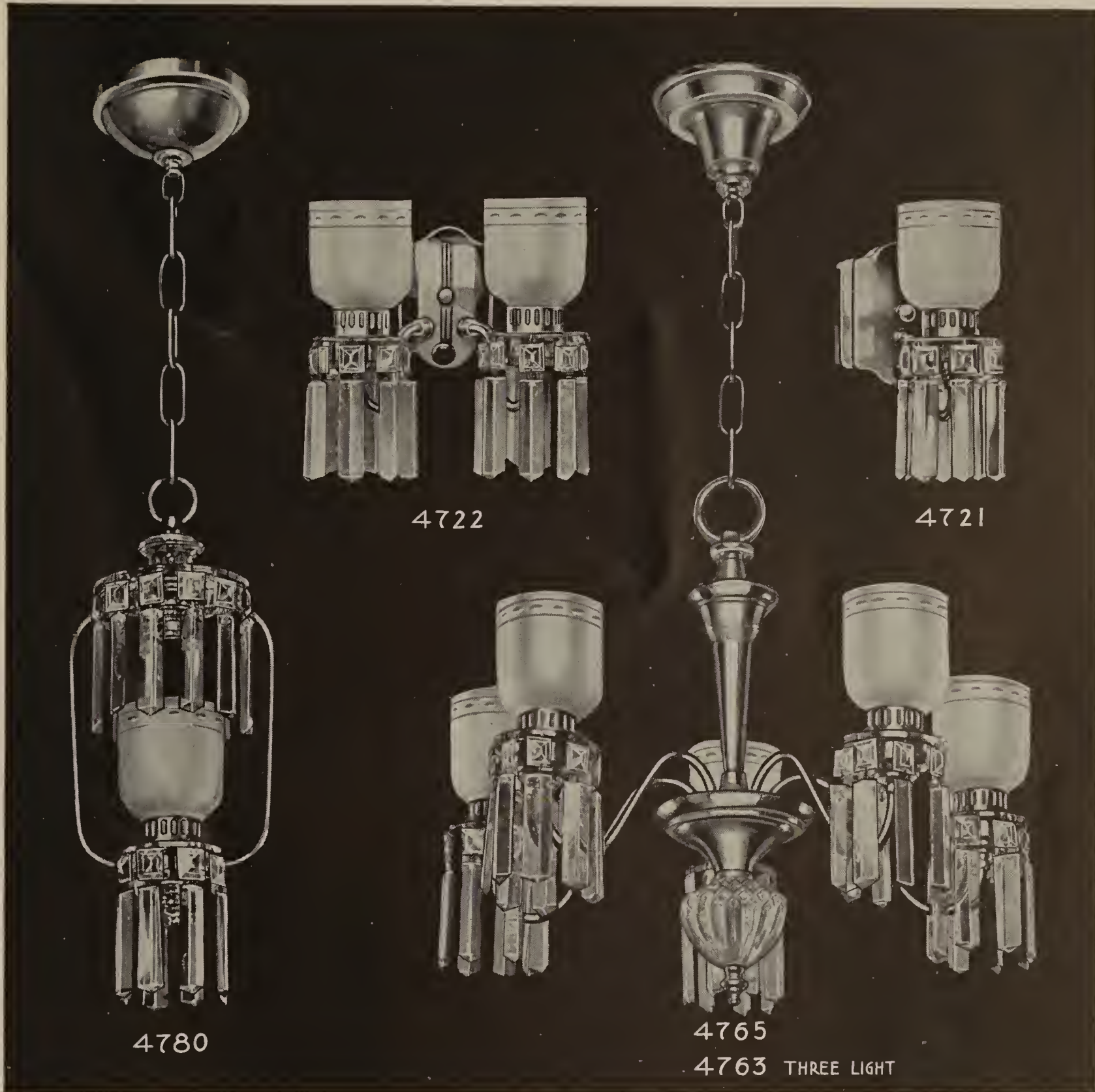
Spread 18"; Takes 42 - 3" Crystals; Packed individually; 4 to unit. **Code: Kamis**

No. G-4880

Spread 6"; Takes 20 - 3" Crystals; Packed individually; 4 to unit. **Code: Kauri**

Finishes: Colonial Brass; or Chrome.

Can be furnished without Crystals.



4780

4722

4721

4765

4763 THREE LIGHT

The 4700 Series

No. G-4721

Back 3½" x 4½"; Extension 5½"; Takes 8 Colonial Prisms; Packed individually; 6 to case. Code: Leaf

No. G-4722

Back 3½" x 4½"; Extension 4½"; Spread 8½"; Takes 16 Colonial Prisms; Packed individually; 6 to case. Code: Lease

No. G-4780

Spread 6"; Takes 20 Colonial Prisms; Packed individually; 4 to unit. Code: Lentil

No. G-4763

3 Light Drop. Spread 13"; Takes 24 Colonial Prisms; Packed individually; 4 to unit. Code: Ledge

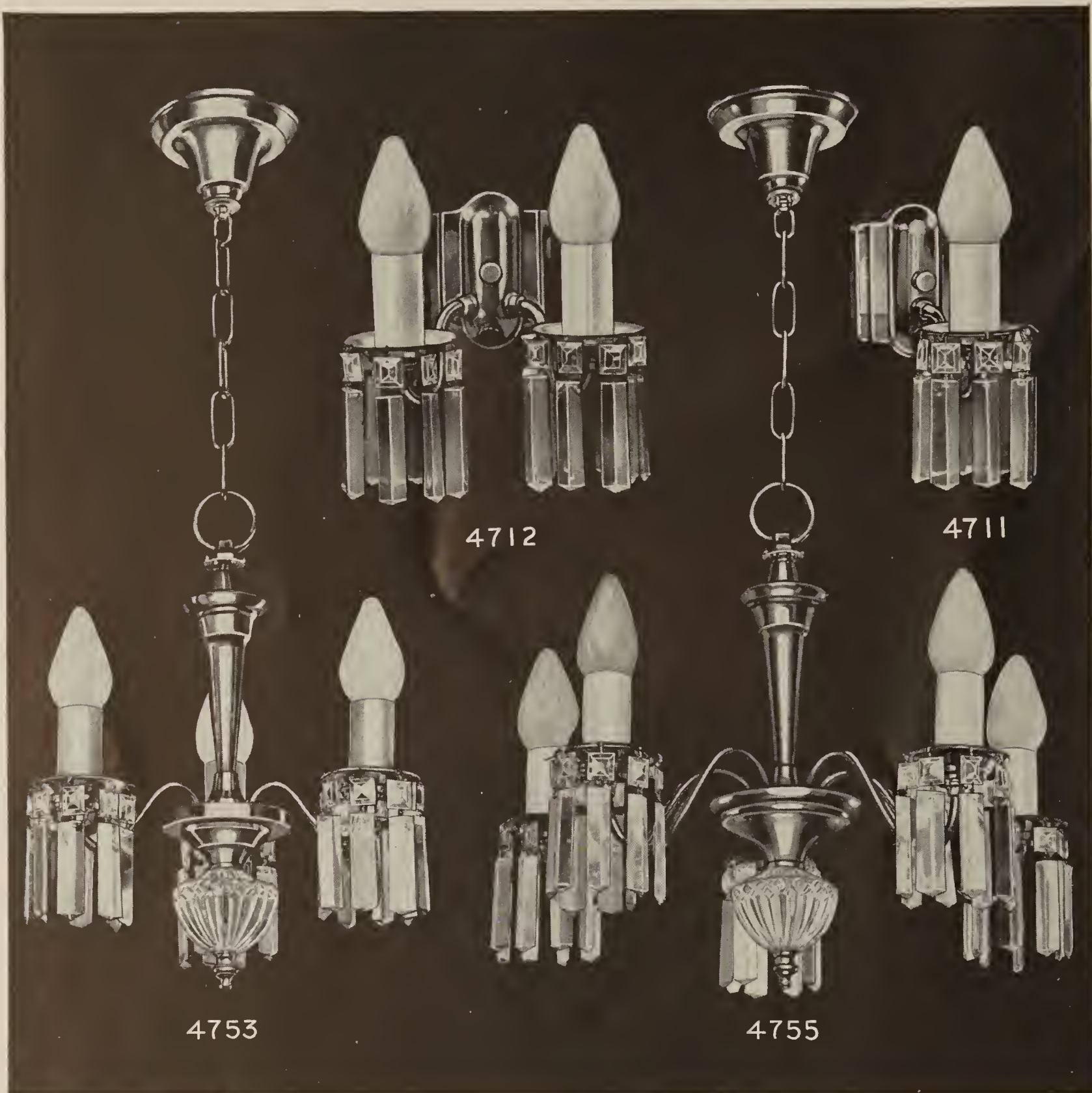
No. G-4765

Spread 18"; Takes 40 Colonial Prisms; Packed individually; 4 to unit. Code: Lemur

Finishes: Colonial Brass; or Chrome. Frosted Cut Shades.

Can be furnished without Prisms.





The 4700 Series

No. G-4711

Back 3½" x 4½"; Extension 5½"; Takes 8 Colonial Prisms; Packed individually; 6 to case. Code: Levee

No. G-4753

Spread 13"; Takes 24 Colonial Prisms; Packed individually; 4 to unit. Code: Licit

No. G-4712

Back 3½" x 4½"; Extension 5½"; Takes 16 Colonial Prisms; Packed individually; 6 to case. Code: Liber

No. G-4755

Spread 18"; Takes 40 Colonial Prisms; Packed individually; 4 to unit. Code: Liege

Finishes: Colonial Brass; or Chrome.

Can be furnished without Prisms.





The 4100 Series

No. G-4173

Spread 15"; Packed individually; 4 to unit.

Code: Flower

No. G-4121

Back 4½"; Extension 8½"; Packed individually; 6 to case.

Code: Foot

No. G-4165

Controlled with 4-way switch; Spread 20"; Packed individually; 4 to unit.

Code: Flute

Finishes: Maroon with Chrome trim; or Ivory with Gold trim.

Ivory Plastic Shades.



The 4100 Series

No. G-4163

Spread 15"; Packed individually; 4 to unit.

Code: Folio

No. G-4180

Spread 8½"; Packed individually; 4 to unit.

Code: Flake

No. G-4175

Spread 20"; Packed individually; 4 to unit. Code: Flavor

Finishes: Maroon with Chrome trim; or Ivory with Gold trim.

Ivory Plastic Shades.





4373

4321

4385

The 4300 Series

No. G-4321

Back 4½"; Extension 5"; Packed individually; 6 to case.
Code: Fabric

No. G-4373

Spread 14"; Packed individually; 4 to unit.
Code: Faith

No. G-4385

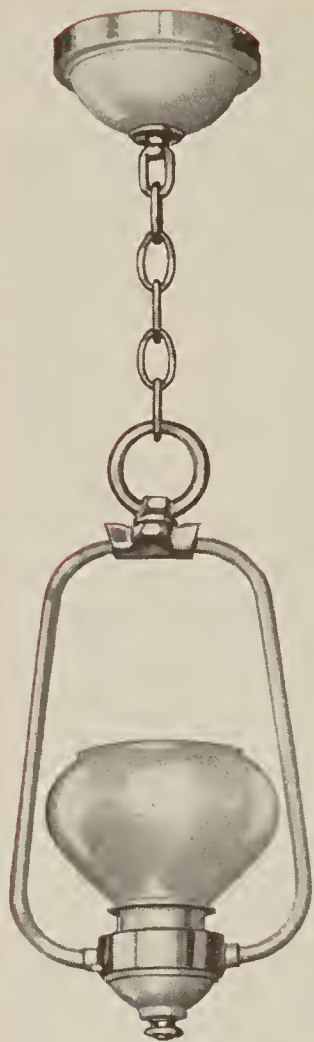
7 light; Controlled with 4-way switch; Spread 20"; Packed individually; 4 to unit.
Code: Fibre

No. G-4395

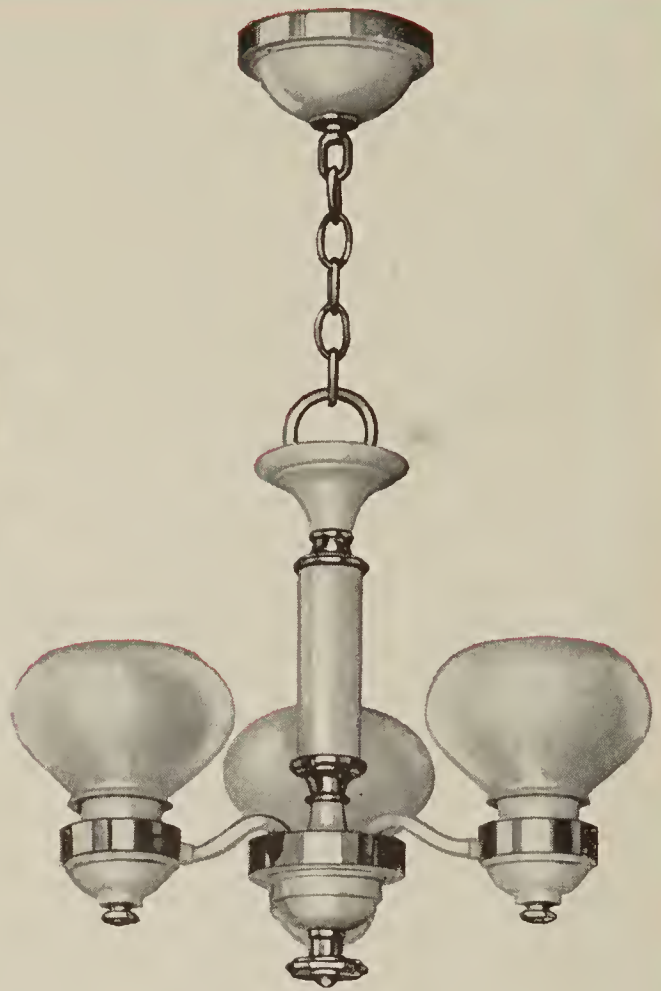
7 light; Ceiling; Spread 20"; Packed individually; 4 to unit.
Code: Fig

*Finishes: Bronze with Chrome trim; or Ivory with Gold trim.
Ivory Glass Shades.*





4380



4363



4365

4375
5 Light Ceiling

The 4300 Series

No. G-4363

Spread 14"; Packed individually; 4 to unit.

Code: Factory

No. G-4375

Spread 20"; Packed individually; 4 to unit.

Code: Fame

No. G-4365

Controlled with 4-way switch; Spread 20"; Packed individually; 4 to unit.

Code: Fagot

No. G-4380

Spread 7"; Packed individually; 4 to unit.

Code: Fargo

*Finishes: Bronze with Chrome trim; or Ivory with Gold trim.
Ivory Glass Shades.*





4421

4473

4465

The 4400 Series

No. G-4421

Spread 7½"; Extension 5½"; Packed individually;
6 to case. Code: Rice

No. G-4473

Spread 13"; Packed individually; 4 to unit.

Code: Roast

No. G-4465

Controlled with 4-way switch; Spread 17"; Packed
individually; 4 to unit.

Code: River

*Finishes: Bronze with Chrome trim; or Ivory with Gold trim.
Crystal Etched Glass.*





4463



4475

The 4400 Series

No. G-4463

Spread 13"; Packed individually; 4 to unit.

Code: Riot

No. G-4475

Spread 17"; Packed individually; 4 to unit.

Code: Robin

Finishes: Bronze with Chrome trim; or Ivory with Gold trim.

Crystal Etched Glass.





3921

3912

3965

The 3900 Series

No. G-3911

1 Light Candle Bracket; Back Plate 5½"; Extension 6"; Packed individually; 6 to case. Code: Galley

No. G-3912

Back Plate 5½"; Extension 6"; Spread 9½"; Packed individually; 6 to case. Code: Gallop

No. G-3921

Back Plate 5½"; Extension 6½"; Frosted glass; Packed individually; 6 to case. Code: Gamin

No. G-3922

2 Light Bracket with Frosted Glass; Back Plate 5½"; Extension 6"; Packed individually; 6 to case. Code: Garret

No. G-3963

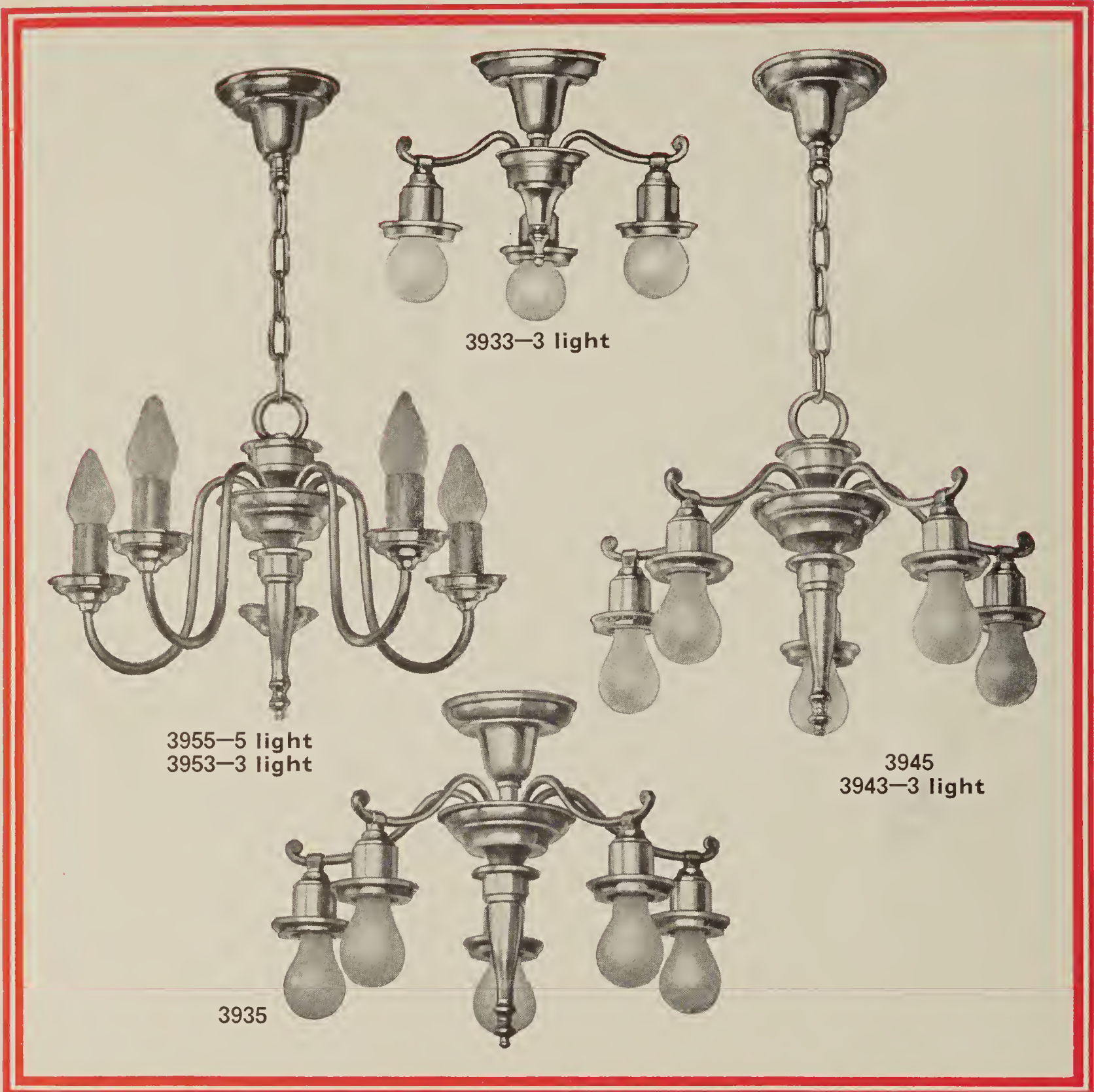
3 Light with Frosted Glass; Packed individually; 4 to unit. Code: Golden

No. G-3965

Spread 19"; Frosted Glass; Packed individually; 4 to unit. Code: Gospel

Finishes: Colonial Brass; Flemish Brass; or English Bronze.





The 3900 Series

No. G-3933

Spread 10"; Depth 9"; Packed individually; 4 to unit.

Code: Gasket

No. G-3935

Spread 18"; Packed individually; 4 to unit.

Code: Gazette

No. G-3943

3 Light Drop; Spread 10"; Packed individually; 4 to unit.

Code: Giant

No. G-3945

Spread 18"; Packed individually; 4 to unit.

Code: Ginger

No. G-3953

3 Light Candle; Spread 10"; Packed individually; 4 to unit.

Code: Glacier

No. G-3955

Spread 18"; Packed individually; 4 to unit.

Code: Glory

Finishes: Colonial Brass; Flemish Brass; or English Bronze.





The 2700 Series

No. G-2721

Back Plate 5"; Extension 6"; Packed individually;
6 to case.

Code: Salary

No. G-2722

Back Plate 5"; Spread 10"; Packed individually; 6 to
case.

Code: Salute

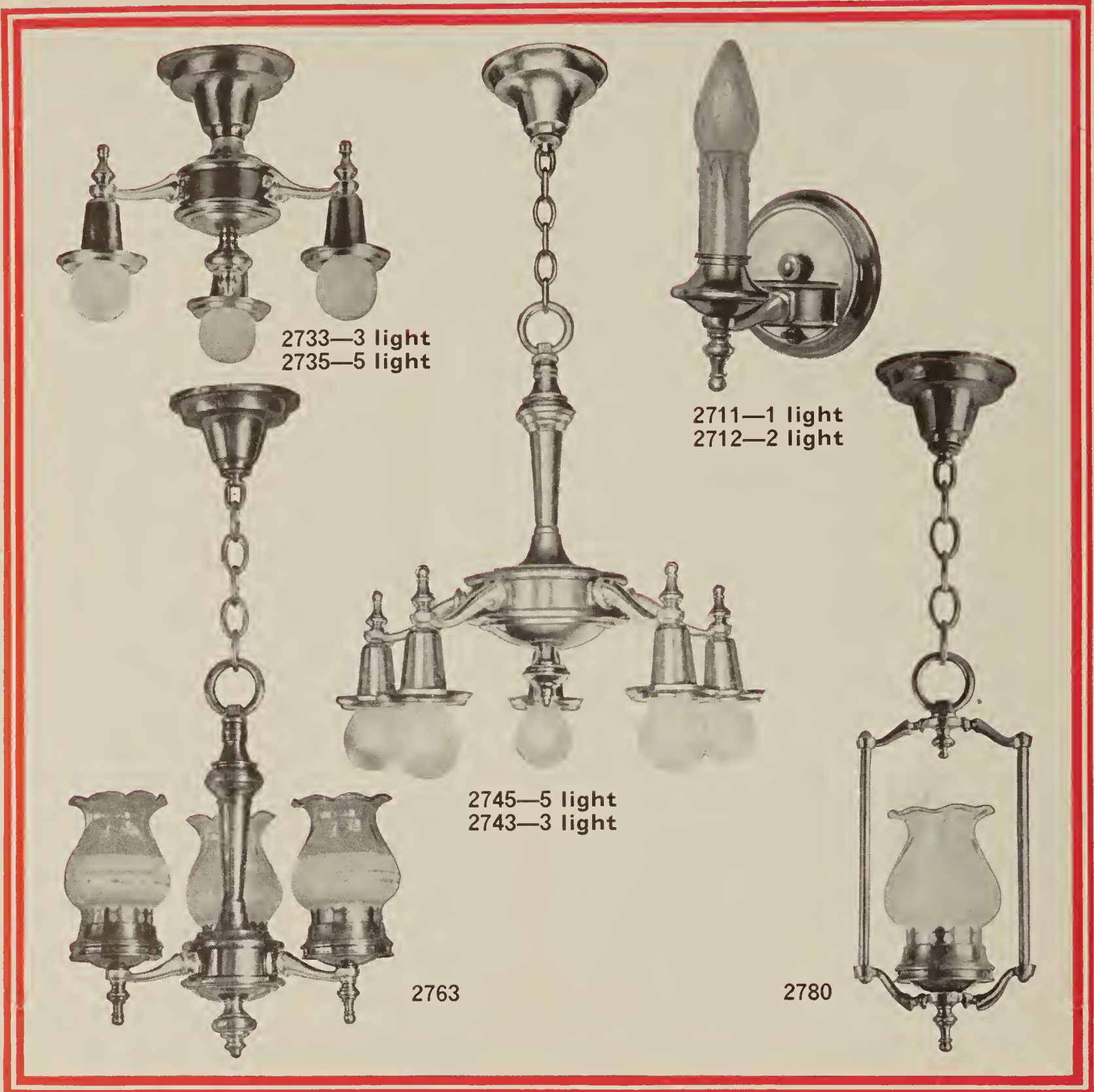
No. G-2765

Spread 18"; Packed individually; 4 to unit.

Code: Sable

*Finishes: Bronze with Pewter trim; or Colonial Brass with Pewter trim.
Frosted or Cut Shades.*





The 2700 Series

No. G-2711

Back Plate 5"; Extension 6"; Packed individually; 6 to case. Code: Sage

No. G-2712

2 Light. Back Plate 5"; Spread 8½"; Extension 5"; Packed individually; 6 to case. Code: Salt

No. G-2733

Spread 14"; Packed individually; 4 to unit. Code: Spar

No. G-2735

5 Light Ceiling. Spread 18"; Packed individually; 4 to unit. Code: Sugar

No. G-2743

3 Light Drop. Spread 14"; Packed individually; 4 to unit. Code: Sash

No. G-2745

Spread 18"; Packed individually; 4 to unit. Code: Surf

No. G-2763

Spread 14"; Packed individually; 4 to unit. Code: Solo

No. G-2780

1 Light Hall Piece. Spread 7"; Packed individually; 4 to unit. Code: Salad

Finishes: Bronze with Pewter trim; or Colonial Brass with Pewter trim.

Frosted or Cut Shades.





3821

3812

3865

The 3800 Series

No. G-3812

Back Plate 4½" x 9"; Extension 5½"; Spread 9";
Packed individually; 6 to case. Code: Koran

No. G-3821

Back Plate 4½" x 9"; Extension 5½"; Frosted Cylinders; Packed individually; 6 to case. Code: Rack

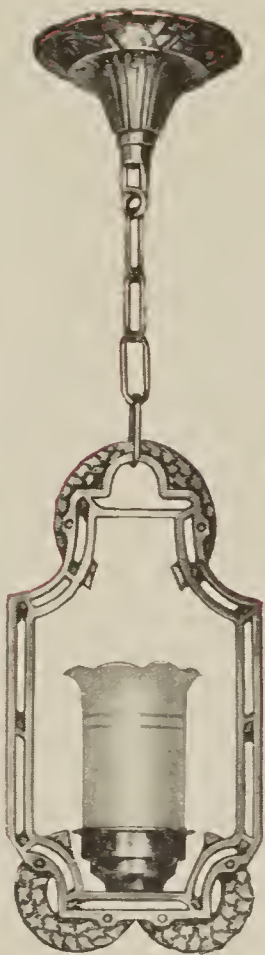
No. G-3865

Spread 18"; Controlled with 4-way switch; Frosted Cylinders; Packed individually; 4 to unit. Code: Rage

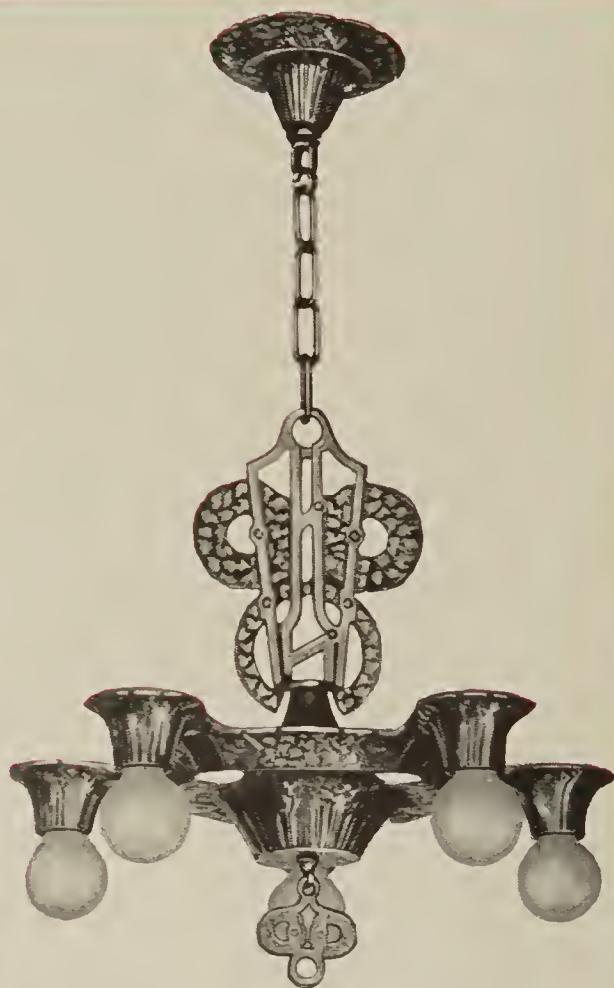
Finish: Pewter with Brass trim.



3855



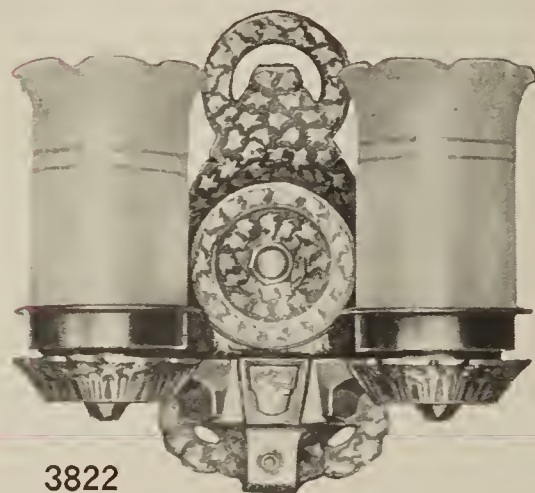
3880



3845—5 light
3843—3 light



3811



3822

The 3800 Series

No. G-3811

Back Plate 4½" x 9"; Extension 5½"; Packed individually; 6 to case.

Code: Kodak

No. G-3822

Back Plate 4½" x 9"; Extension 4½"; Spread 9"; Frosted Crystal Cylinders; Packed individually; 6 to case.

Code: Raft

No. G-3833

3 Light Ceiling. Spread 12"; Depth 9"; Packed individually; 4 to unit.

Code: Quail

No. G-3835

5 Light Ceiling. Spread 18"; Depth 10"; Packed individually; 4 to unit.

Code: Queen

No. G-3843

3 Light. Spread 12"; Packed individually; 4 to unit.

Code: Quest

No. G-3845

Spread 18"; Controlled with 4-way switch; Packed individually; 4 to unit.

Code: Recess

No. G-3855

Spread 18"; Controlled with 4-way switch; Packed individually; 4 to unit.

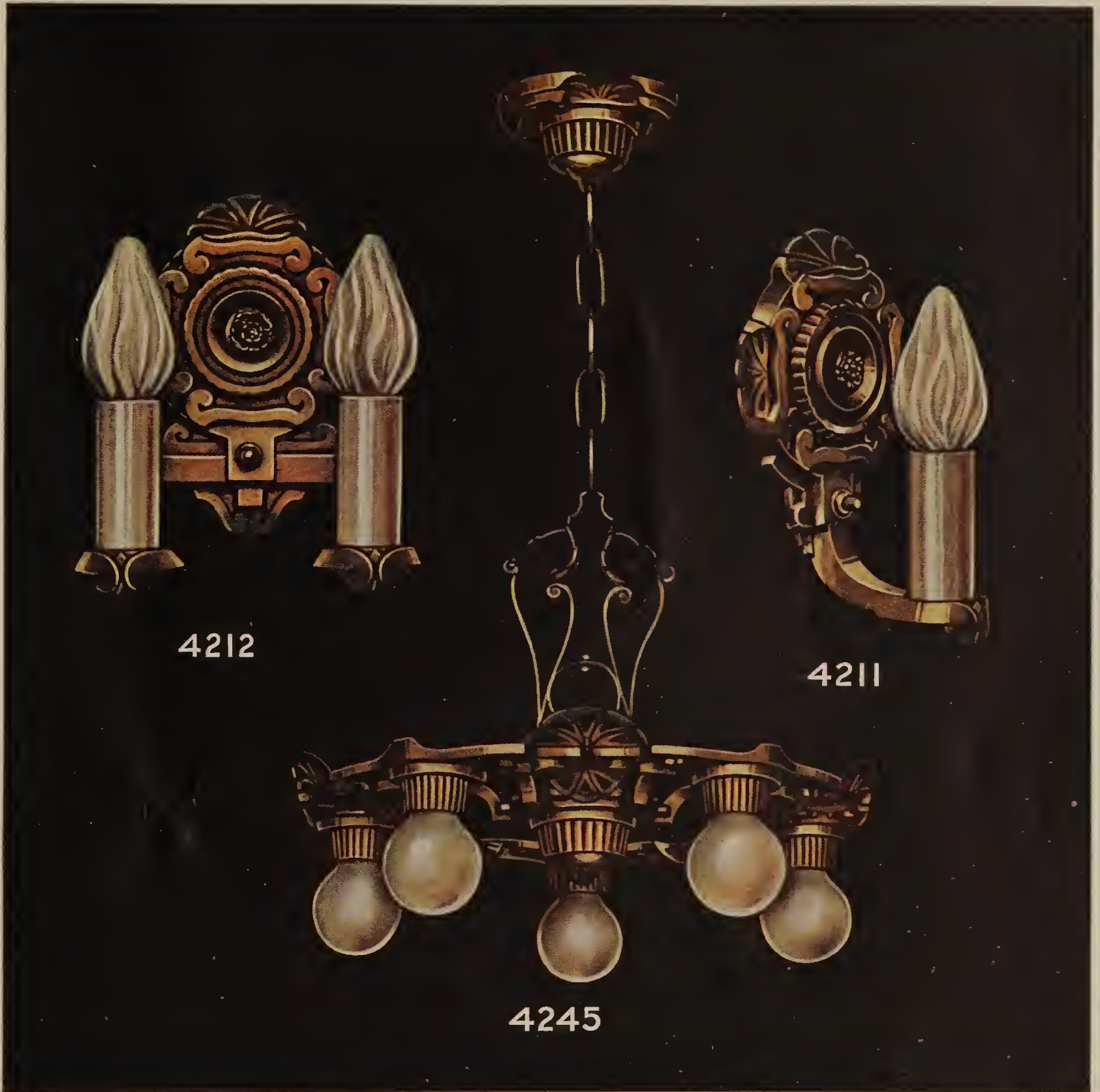
Code: Heroic

No. G-3880

Spread 7"; Frosted Crystal Cylinder; Packed individually; 4 to unit.

Code: Rebel

Finish: Pewter with Brass trim.



4212

4211

4245

The 4200 Series

No. G-4212

Spread 7"; Packed individually; 6 to case.

Code: Canal

No. G-4211

Back Plate 8" x 5"; Packed individually; 6 to case.

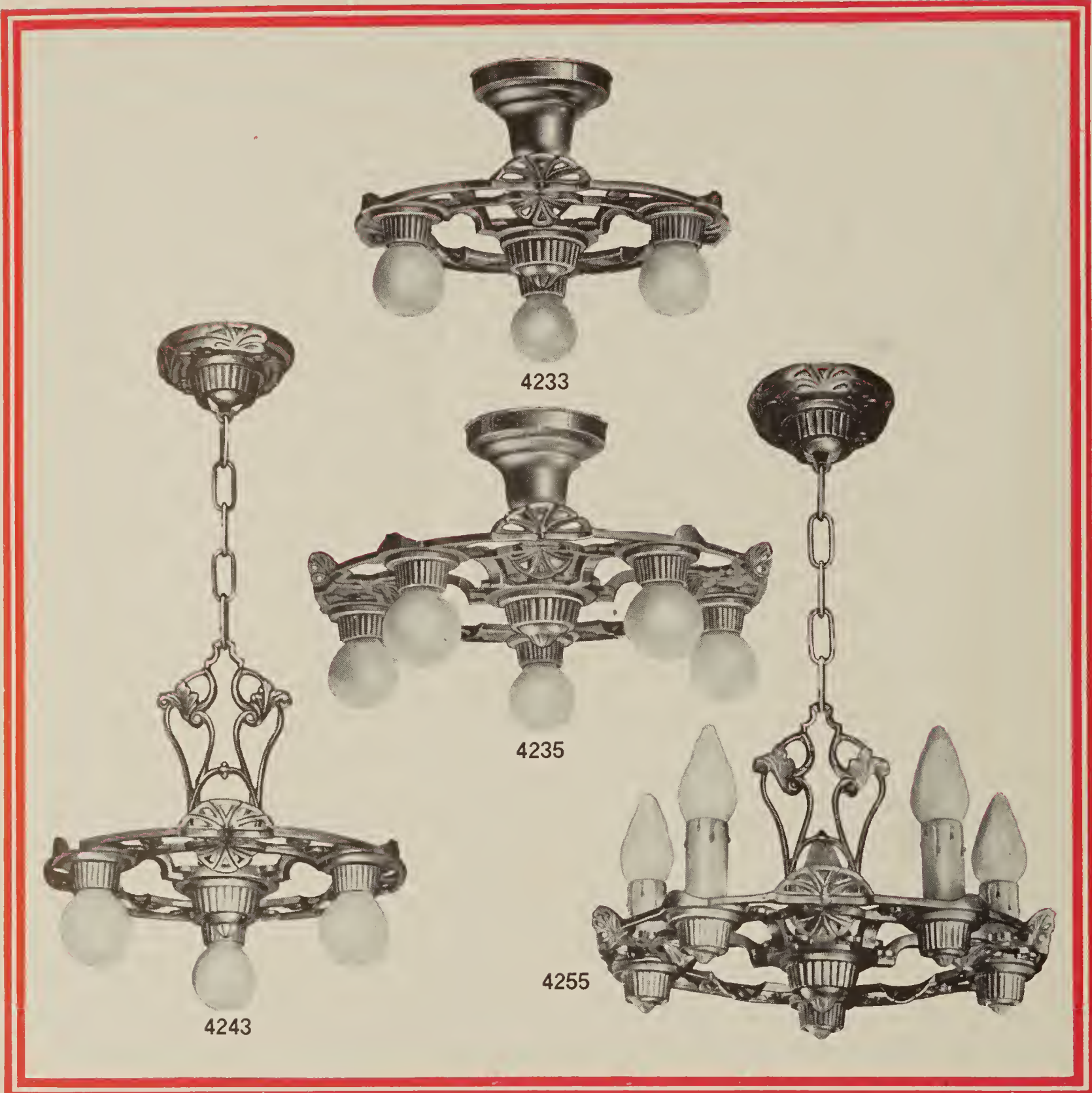
Code: Candle

No. G-4245

Spread 15"; Packed individually; 4 to unit.

Code: Cadet

Finishes: Antique Gold Poly; or Burnished Gold.



The 4200 Series

No. G-4233

Spread 13"; Packed individually; 4 to unit.

Code: Canoe

No. G-4243

Spread 13"; Packed individually; 4 to unit.

Code: Captain

No. G-4235

Spread 15"; Packed individually; 4 to unit.

Code: Camel

No. G-4255

Spread 15"; Packed individually; 4 to unit.

Code: Cargo

Finishes: Antique Gold Poly; or Burnished Gold.





The Colonial Series

No. G-1000

1 light; Spread 6"; Depth 10"; 3¼" x 6" Frosted Cut Globe; Packed individually; 6 to unit. Code: Easter

No. G-1001

1 light; Spread 8"; Depth 10½"; 4" x 8" Frosted Cut Globe; Packed individually; 6 to unit. Code: Eclipse

No. G-1002

2 light; Spread 12"; Depth 6½"; 10⅜" Frosted Cut Hemisphere; Packed individually; 4 to unit.

Code: Editor

No. G-1003

2 light; Spread 12"; Depth 12"; 10⅜" Frosted Cut Hemisphere; Packed individually; 4 to unit.

Code: Elbow

No. G-1005

2 light; Spread 12"; Depth 7"; 10⅜" Frosted Cut Bowl; Packed individually; 4 to unit.

Code: Emerald

No. G-1007

2 light; Spread 10"; Depth 5½"; 8" Frosted Cut Bowl; Packed individually; 4 to unit.

Code: Empire

Finishes: Bronze; Colonial Brass; Flemish Brass; or Pewter.





The Colonial Series

No. G-180

Length 36"; 6" x 8" Cylinder; Frosted Cut Glass.

Code: Knee

No. G-280

Length 34"; 4" x 6" Cylinder; Frosted Cut Glass.

Code: Knife

No. G-380

Length 36"; Cage 6 $\frac{1}{4}$ " x 11 $\frac{1}{2}$ "; Crystal Cut Glass.

Code: Knit

No. G-480

Length 36"; Cage 6 $\frac{1}{4}$ " x 11 $\frac{1}{2}$ "; Frosted Cut Glass.

Code: Knob

No. G-580

Length 36"; Cage 7" x 11 $\frac{1}{2}$ "; Crystal Cut Glass.

Code: Knock

No. G-680

Length 36"; Cage 7" x 11 $\frac{1}{2}$ "; Frosted Cut Glass.

Code: Knot

Finishes: Colonial Brass; Flemish Brass; Pewter; or Bronze.

Packed individually; 4 to unit.





231

221

202

241

211

The Bedroom Series

No. G-202

2 light; Capacity two 60 Watt Bulbs; Spread 12½"; Depth 7"; Inside Frosted Crystal Glass 10" diameter; Finishes: Ivory; Swedish; or Bronze. Code: Bias

No. G-221

1 light; Capacity 100 Watt Bulb; Spread 14"; Depth 11"; Inside Frosted Crystal Glass 10" diameter; Finish: Ivory. Code: Bisk

No. G-211

1 light; Capacity 100 Watt Bulb; Spread 12" Depth 13"; Crystal Glass 5" diameter; Finish: Ivory. Code: Billet

No. G-231

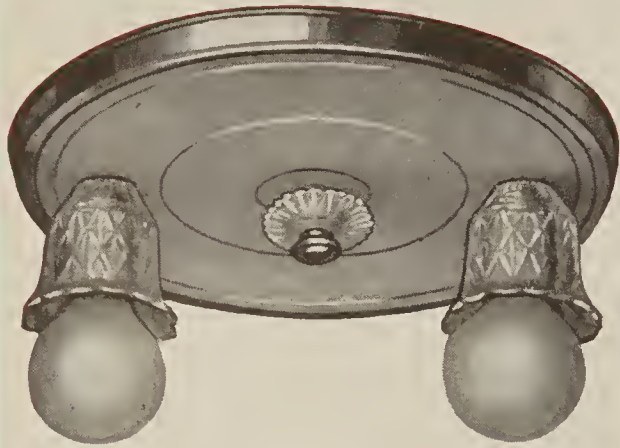
1 light; Capacity 100 Watt Bulb; Spread 12"; Depth 9"; Crystal Glass 8" diameter; Finish: Ivory. Code: Bite

No. G-241

1 light; Capacity 100 Watt Bulb; Spread 14"; Depth 10½"; Crystal or Pink Etched Glass 14"; Finish: Ivory with Gold trim. Code: Bird

Packed individually; 6 to case.

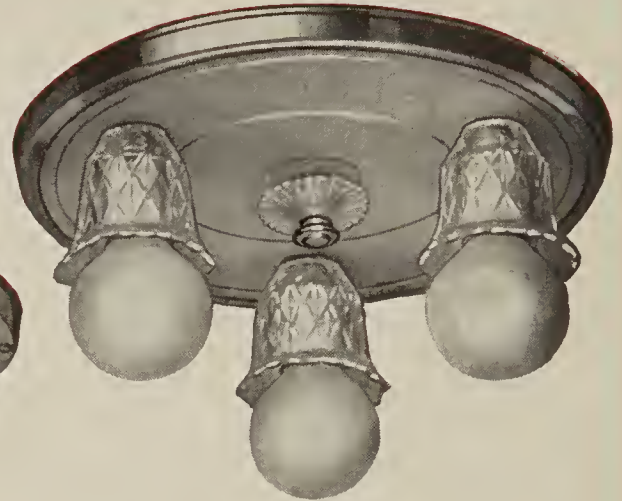




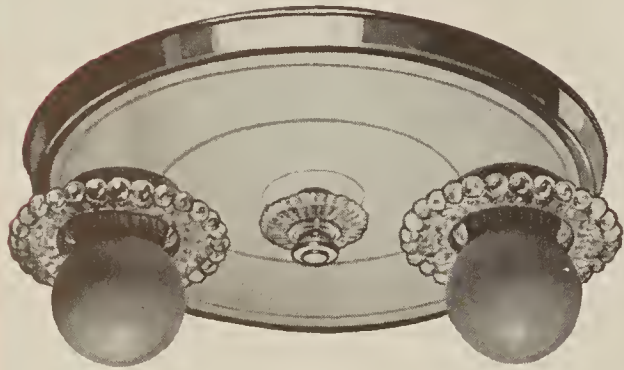
1902



1901



1903



1602



1601



1603

The Bedroom Series

No. G-1601

Spread $5\frac{5}{8}$ "; Width of Crystal Glass Flare 4"; Packed individually; 12 to case. Code: Annex

No. G-1602

Spread $10\frac{1}{4}$ "; Width of Crystal Glass Flare 4"; Packed individually; 10 to case. Code: Anvil

No. G-1603

Spread $10\frac{1}{4}$ "; Width of Crystal Glass Flare 4"; Packed individually; 10 to case. Code: Acme

No. G-1901

Spread $5\frac{5}{8}$ "; Crystal Glass Socket Cover; Packed individually; 12 to case. Code: Base

No. G-1902

Spread $10\frac{1}{4}$ "; Crystal Glass Socket Cover; Packed individually; 10 to case. Code: Bat

No. G-1903

Spread $10\frac{1}{4}$ "; Crystal Glass Socket Cover; Packed individually; 10 to case. Code: Bead

Finishes: Ivory with Gold trim; Blue with Chromite trim;
or Orchid with Chromite trim.



Semi-Indirect Bedroom Series

No. G-21

1 light; Capacity 100 Watt Bulb; Spread 11"; Length 11"; 7" Ivory Plastic Bottom. Code: Paca

No. G-31

1 light; Capacity 60 Watt Bulb; Spread 9½"; Length 11"; 7" Ivory Plastic Bottom. Code: Pad

No. G-71

1 light; Capacity 100 Watt Bulb; Spread 8"; Length 9"; Ivory Bottom Glass. Code: Parrot

No. G-41

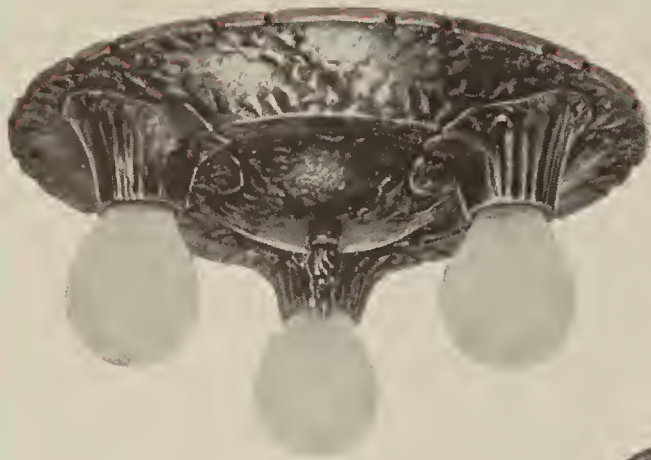
1 light; Capacity 100 Watt Bulb; Spread 11"; Length 11"; 5" Crystal Etched Bottom Glass. Code: Pal

No. G-61

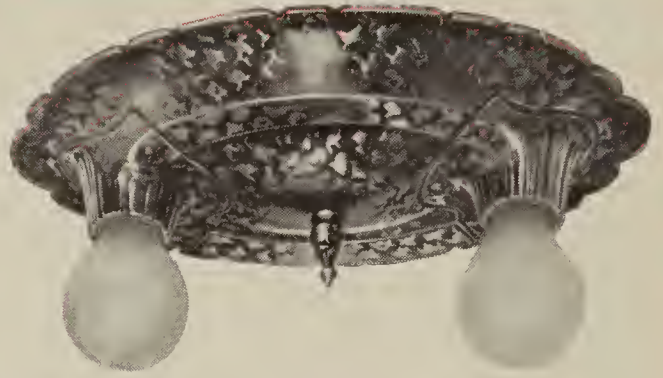
1 light; Capacity 100 Watt Bulb; Spread 12"; Length 11½"; 7" Crystal Etched Bottom Glass. Code: Paper

Finish: Ivory with Gold trim. Packed individually; 6 to case.





303



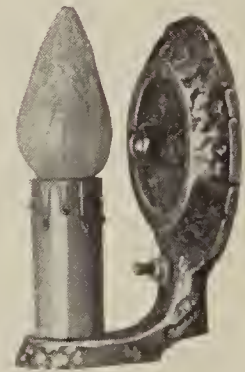
302



301



1501 1/2



311



801

The Bedroom Series

No. G-301

Spread 6 1/2"; Finishes: Old Ivory; or Swedish; Packed individually; 12 to case. **Code: Abeam**

No. G-302

Spread 11"; Finishes: Old Ivory; or Swedish; Packed individually; 12 to case. **Code: Abode**

No. G-303

Spread 11"; Finishes: Old Ivory; or Swedish; Packed individually; 6 to case. **Code: Absent**

No. G-311

Back 4 1/2" x 6 1/2"; Extension 4"; Finishes: Old Ivory; Swedish; Packed individually; 12 to case. **Code: Abyss**

No. G-801

1 light; Capacity 100 Watt Bulb; Spread 10 1/4"; Length 10 1/2"; Finish: Ivory; Amber, Crystal, Green, or Pink Glass Shade; Packed individually; 6 to case. **Code: Panel**

No. G-1501 1/2

Spread 5 5/8"; Width of Crystal Glass Flare 6"; Finishes: Bronze; Colonial Brass; Chrome; Flemish Brass; or Ivory; Packed individually; 12 to case. **Code: Cake**





*The Bedroom
or Breakfast Room Series*

No. G-91

1 light; Capacity 100 Watt Bulb; Spread 11"; Length 10½"; Finish: Ivory. 5" Crystal Etched Bottom Glass; Ivory, Pink or Green Glassene Shade.

Code: Peck

No. G-701

1 light; Capacity 100 Watt Bulb; Spread 10"; Length 10½"; Finish: Ivory. Amber, Green or Pink tinted Glass Shade.

Code: Peach

No. G-1802

2 light; Capacity two 60 Watt Bulbs; Spread 14½"; Length 4½"; Finish: Ivory. Crystal or Pink Etched Glass Shade.

Code: Putty

Packed individually; 6 to case

No. G-911CO

Wired with Convenience Outlet; Spread 4½"; Extends 3½"; Finish: Old Ivory.

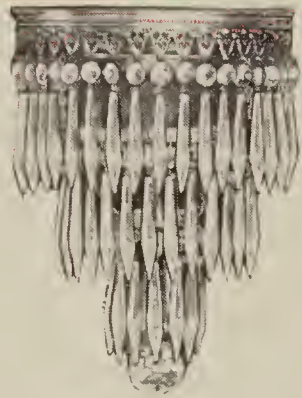
Code: Proso

No. G-1180

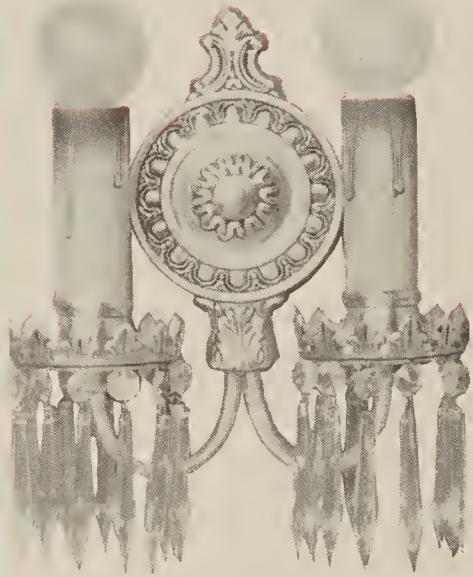
1 light; Capacity 60 Watt Bulb; Spread 12"; Length 30"; Finish: Ivory with Gold trim; Ivory Glass Shade.

Code: Prune





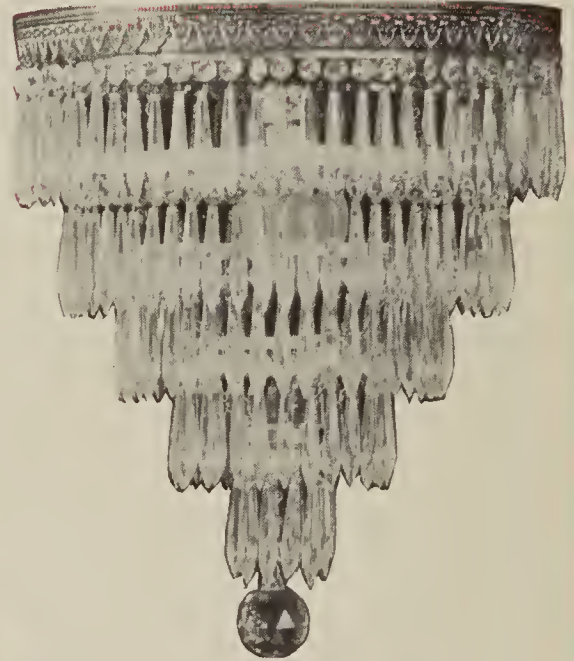
4008C



4022



4016D



4016C

The 4000 Series

No. G-4008C—1 Light Ceiling; Spread 8"; Length 9"; Takes 70-3" Crystals in 3 Rows. Code: **Wallet**

No. G-4008D—1 Light Drop; Spread 8"; Takes 80-3" Crystals in 3 Rows. Code: **Walnut**

No. G-4010C—1 Light Ceiling; Spread 10"; Length 12"; Takes 113-3" Crystals in 3 Rows. Code: **Waltz**

No. G-4010D—1 Light Drop; Spread 10"; Takes 123-3" Crystals in 4 Rows. Code: **Waist**

No. G-4012C—2 Light Ceiling; Spread 12"; Length 13"; Takes 132-3" Crystals in 4 Rows. Code: **Ward**

No. G-4012D—2 Light Drop; Spread 12"; Takes 142-3" Crystals in 4 Rows. Code: **Warden**

No. G-4016C—3 Light Ceiling; Spread 14½"; Length 16"; Takes 180-3" Crystals in 5 Rows. Code: **Watch**

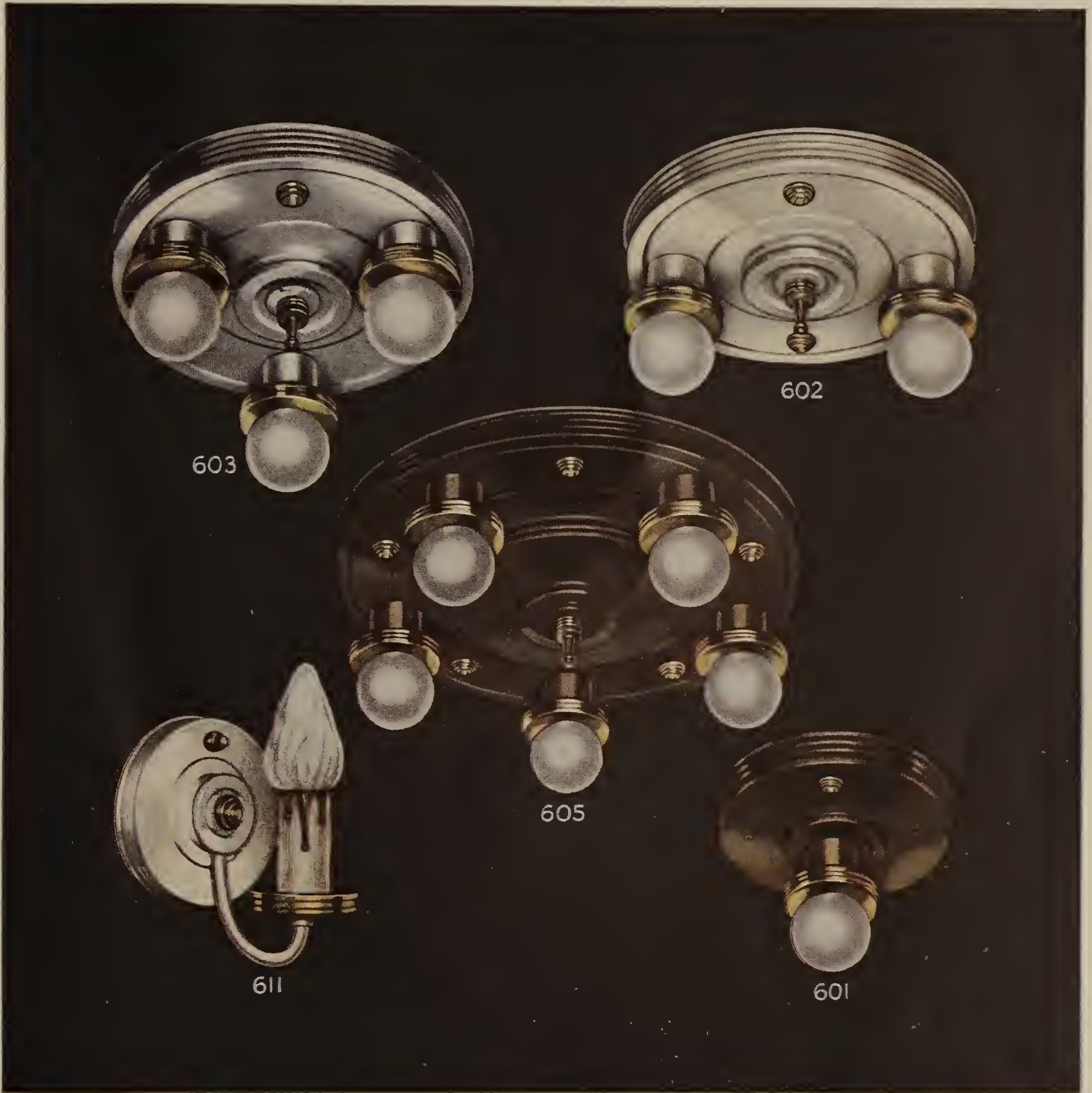
No. G-4016D—3 Light Drop; Spread 14½"; Takes 190-3" Crystals in 5 Rows. Code: **Wave**

No. G-4021—1 Light Bracket; Back Plate 4" x 7"; Extension 6"; Takes 10-3" Crystals. Code: **Waver**

No. G-4022—2 Light Bracket; Back Plate 4" x 7"; Extension 4½"; Spread 9½"; Takes 20-3" Crystals. Code: **Noose**

*Finish: Silver and Black. Packed individually; 4 to unit.
Can be furnished without Crystals.*





The 600 Series

No. G-601

Spread 6½" Code: Enlist

No. G-602

Spread 10" Code: Envoy

No. G-603

Spread 10" Code: Ferry

No. G-605

Spread 14" Code: Frock

No. G-611

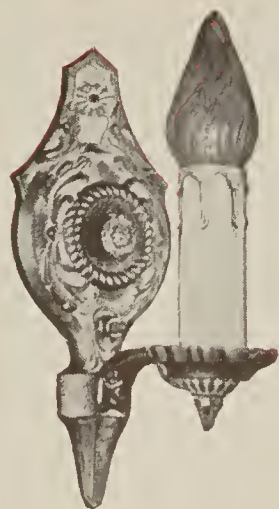
Back Plate 4¾"; Extension 5" . . . Code: Frolick

No. G-612

2 Light Bracket. Back 4¾"; Spread 7" Code: Fun

*Finishes: Ivory and Gold; Bronze and Gold; or Pewter and Gold.
Packed individually; 6 to case.*

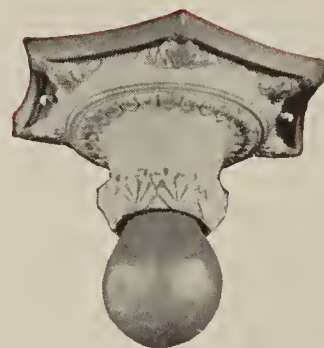




1211



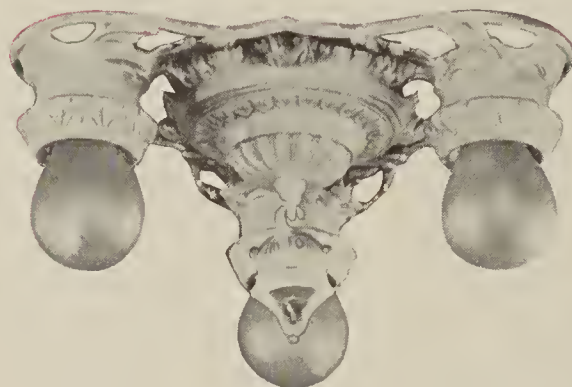
1202



1201



1202D



1203



1203D

The 1200 Series

No. G-1201

Spread 6"; Packed individually; 12 to case.

Code: Capitol

No. G-1202

Spread 12"; Packed individually; 12 to case.

Code: Carrot

No. G-1202D

Spread 12"; Packed individually; 6 to case.

Code: Caddy

No. G-1203

Spread 12"; Packed individually; 6 to case.

Code: Canvas

No. G-1203D

Spread 12"; Packed individually; 6 to case.

Code: Cafe

No. G-1211

Back 4" x 9"; Extension 5"; Packed individually; 12 to case.

Code: Carpet

Finishes: Old Ivory; or Ivory Poly.





The Indirect Series

No. G-212

2 light; Capacity two 60 Watt Bulbs; Spread 13"; Depth 6"; Inside Frosted Crystal Glass 12" diameter; Finishes: Ivory; Pewter; or Bronze. Code: Bacon

No. G-232

2 light; Capacity two 75 Watt Bulbs; Spread 12½"; Depth 14½"; Inside Frosted Crystal Glass 10" diameter; Finishes: Ivory with Gold trim; Swedish with Gold trim; or Bronze with Gold trim. Code: Ball

No. G-905

1 light; Capacity 200 Watt Bulb; Spread 16"; Depth 11½"; Crystal Glass 8" diameter; Finishes: Ivory with Gold trim; or Silver Tint with Chromite trim. Code: Band

No. G-915

Same as No. G-905; Suspended same as No. G-945; 1 light; Capacity 200 Watt Bulb; Length overall 27"; Finishes: Ivory with Gold trim; or Silver Tint with Chromite trim. Code: Bank

No. G-935

1 light; Capacity 200 Watt Bulb; Spread 16"; Depth 13"; Ivory Glass 7½" diameter; Finishes: Ivory with Gold trim; or Silver Tint with Chromite trim. Code: Bark

No. G-945

1 light; Capacity 200 Watt Bulb; Spread 16"; Length overall 27"; Ivory Glass 7½" diameter; Finishes: Ivory with Gold trim; or Silver Tint with Chromite trim. Code: Barn

Packed individually; 4 to unit.





WITH DIFFUSER

No. G-1701
Code: Balm

No. G-1702
Code: Bear

No. G-1703
Code: Beet

ALL THREE LAMPS COME IN BRONZE OR IVORY

The diffuser is of molded Plaskon, cone shaped, 4½" in diameter, and gives efficient, glareless light.

WITH 6" BOWL

No. G-1751
Code: Bell

No. G-1752
Code: Berg

No. G-1753
Code: Best

ALL THREE LAMPS COME IN BRONZE OR IVORY

The 6" bowl is of molded Plaskon, bowl shaped. Its size permits use with a 100 Watt Bulb giving an adequate amount of proper light.

Wall Portable Series

Each of the above shown lamps are approximately 15" high, from the bottom of the bracket to the top of the shade; and 10½" wide, from wall to outer extremity.

G-1701-G-1751

As shown — is of wrought iron, beautifully lacquered, and sturdily constructed.

G-1702-G-1752

As shown — has metal back plate, wrought iron arm, applied gilt stars, beautifully lacquered, and of sturdy construction.

G-1703-G-1753

As shown — Stamped back plate, stamped arm, ivory lacquer with gilt decoration — silk trimmed shade, cellophane wrapped.

Packed 3 to a carton.





The Bedroom Series

No. G-1008

2 light; Spread 9"; Depth 5"; Opal or Ivory Glass 8" diameter.

Code: Ear

No. G-1010

2 light; Spread 11 $\frac{1}{8}$ "; Depth 5"; Opal or Ivory Glass 10" diameter.

Code: Eve

No. G-1012

2 light; Spread 13"; Depth 6"; Opal or Ivory Glass 12" diameter.

Code: Egg

No. G-1014

3 light; Spread 15"; Depth 6"; Opal or Ivory Glass 14" diameter.

Code: Elk

No. G-1501

Spread 5 $\frac{5}{8}$ "; Width of Crystal Glass Flare 4".

Code: Team

No. G-1502

Spread 10"; Width of Crystal Glass Flare 4".

Code: Tail

No. G-1503

Spread 10"; Width of Crystal Glass Flare 4".

Code: Tank

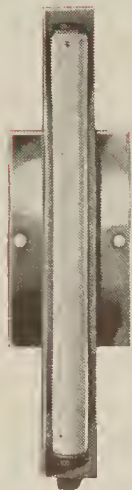
No. G-1505

Spread 15"; Width of Crystal Glass Flare 4".

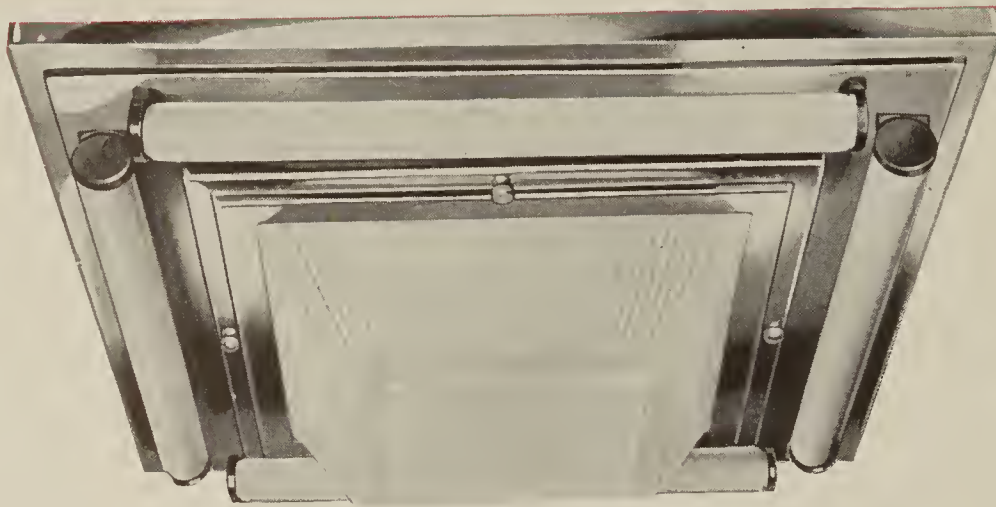
Code: Tent

*Finishes: Bronze; Colonial Brass; Chrome; Flemish Brass; or Ivory.
Packed individually; 6 to case.*

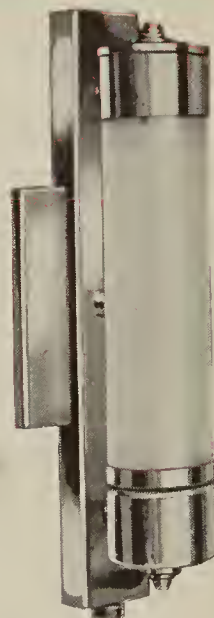




1312



1306



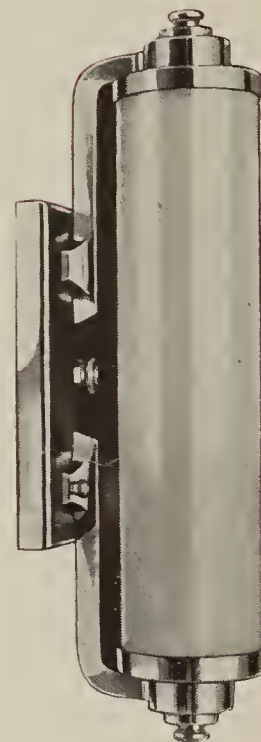
1108
1108CO



1318



1302



1107-1—1 light
1107-2—2 light

The Chrome Series

No. G-1107-1

1 light; Back $3\frac{1}{2}$ " x 7"; Length overall 15"; Extension $4\frac{1}{2}$ "; 3" x 12" Opal Cylinder; Wired with canopy switch; Packed individually; 6 to case. Code: **Album**

No. G-1107-2

Same as No. G-1107-1; Wired with two lights.

Code: **Grand**

No. G-1108

Back $3\frac{1}{2}$ " x $11\frac{1}{2}$ "; Extension $3\frac{1}{4}$ "; 2" x 8" Opal Cylinder; Wired with canopy switch; Packed individually; 6 to case. Code: **Alien**

No. G-1108CO

Same as No. G-1108; Wired with Convenience Outlet.

Code: **Alarm**

No. G-1302

2 light; Capacity two 40 Watt Bulbs; Spread 11" x 11"; Depth 3"; Crystal Etched Glass; Packed individually; 6 to case. Code: **Ampere**

No. G-1306

6 light; Capacity two 40 Watt Bulbs, four 12" Lumiline Bulbs; Spread 16" x 16"; Depth 4"; Crystal Etched Glass; Packed individually; 2 to unit. Code: **Angel**

No. G-1312

Back $3\frac{1}{2}$ " x 13"; Capacity one 12" Lumiline Bulb; Packed individually; 6 to case. Code: **Anger**

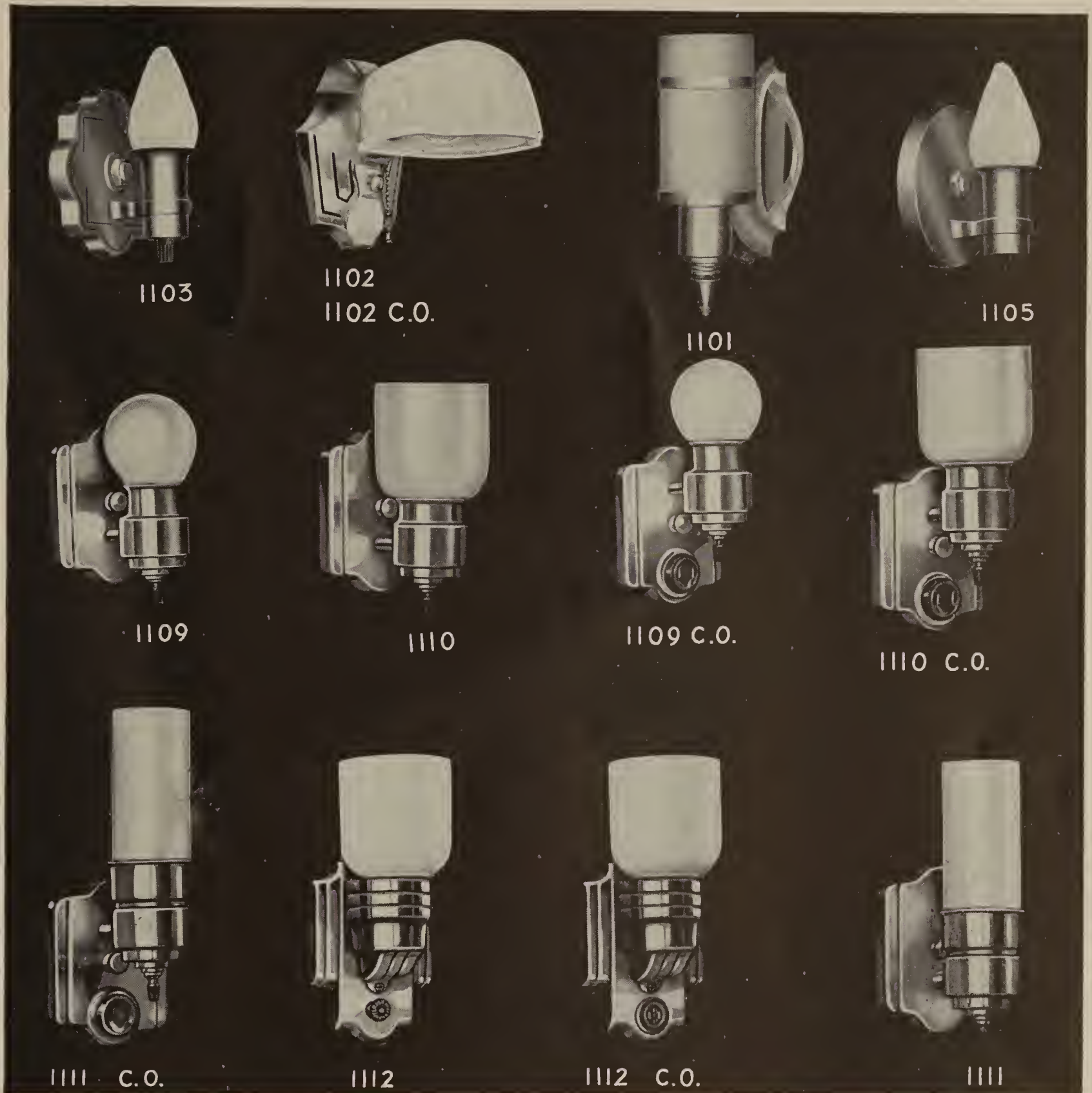
No. G-1318

Back $3\frac{1}{2}$ " x 19"; Capacity one 18" Lumiline Bulb; Packed individually; 6 to case. Code: **Ankle**

Finish: *Chrome.*

Lamps not included.





The Chrome Bathroom Series

- No. G-1101** Length overall 8"; Back 4" x 6"; Extension 3 $\frac{1}{4}$ "; Opal Cylinder 3" x 6"; Wired with canopy switch. **Code: Admit**
- No. G-1102** Length overall 6"; Back 6" x 4"; Extension 7 $\frac{1}{2}$ "; Opal shade; Wired pull chain. **Code: Adopt**
- No. G-1102CO** Same as above; with Convenience Outlet. **Code: Adore**
- No. G-1103** Back 4 $\frac{1}{2}$ " x 4 $\frac{1}{2}$ "; Extension 2 $\frac{3}{4}$ "; Wired with turn knob socket. **Code: Advent**
- No. G-1105** Back 4 $\frac{1}{2}$ " x 4 $\frac{1}{2}$ "; Extension 2 $\frac{3}{4}$ "; Wired with turn knob socket. **Code: Agate**
- No. G-1109** Back 3 $\frac{1}{2}$ " x 4 $\frac{1}{2}$ "; Extension 3 $\frac{1}{4}$ "; Wired with turn knob socket. **Code: Abacus**
- No. G-1109CO** Same as above; with Convenience Outlet. **Code: Ahaft**

- No. G-1110** Back 3 $\frac{1}{2}$ " x 4 $\frac{1}{2}$ "; Extension 4"; Opal shade 2 $\frac{7}{8}$ " diameter; Wired with turn knob socket. **Code: Abloom**
- No. G-1110CO** Same as above; with Convenience Outlet. **Code: Aboma**
- No. G-1111** Back 3 $\frac{1}{2}$ " x 4 $\frac{1}{2}$ "; Extension 3 $\frac{1}{2}$ "; Opal cylinder 2" x 5"; Wired with turn knob socket. **Code: Abroad**
- No. G-1111CO** Same as above; with Convenience Outlet. **Code: Abuzz**
- No. G-1112** Back 3 $\frac{5}{8}$ " x 4 $\frac{5}{8}$ "; Extension 3 $\frac{1}{4}$ "; Opal shade 2 $\frac{7}{8}$ " diameter; Wired with canopy switch. **Code: Abwab**
- No. G-1112CO** Same as above; with Convenience Outlet. **Code: Abstract**

Finish: Chrome. Packed individually; 12 to case.



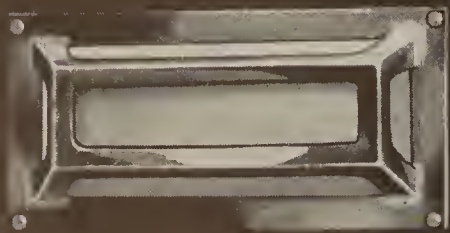


1414

1412 - 12" SQUARE



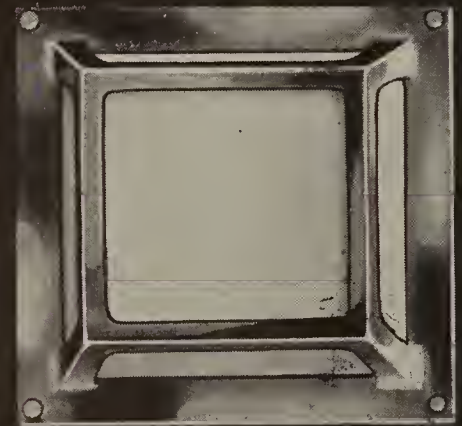
1411



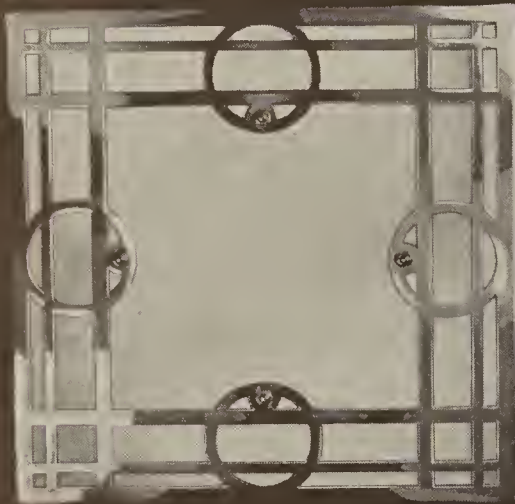
1404



1409



1408



1320



1407

The Recessed Series

No. G-1320—Flush or Semi-flush up to 2"; 2 light; Capacity two 100 Watt Bulbs; Frame 12½" x 12½"; Recessed box 7½" x 7½"; Frosted Crystal Glass.

Code: Anode

No. G-1404—1 light; Capacity 100 Watt Bulb; Box size 4" x 8½" x 4" Deep; Frame size 4½" x 9" x 1½" Deep; Flashed Opal Glass.

Code: Tackle

No. G-1407—1 light; Capacity 150 Watt Bulb; Box size 6½" x 10¾" x 4" Deep; Frame size 7½" x 12" x 1¾" Deep; Flashed Opal Glass.

Code: Talent

No. G-1408—1 light; Capacity 100 Watt Bulb; Box size 7½" x 7½" x 4" Deep; Frame size 8⅝" x 1¾" Deep; Flashed Opal Glass.

Code: Tango

No. G-1409—1 light; Capacity 100 Watt Bulb; Box size 8¼" Diameter; 4" Deep; Frame size 9" Diameter; Flashed Opal Glass.

Code: Tattoo

No. G-1411—1 light; Capacity 150 Watt Bulb; Box size 10¼" Diameter; 4" Deep; Frame size 11¼" Diameter; Flashed Opal Glass.

Code: Tavern

No. G-1412—2 light; Capacity two 150 Watt Bulbs; Box size 12" x 12" x 4" Deep; Frame size 12½" x 12½" x 1¾" Deep; Flashed Opal Glass.

Code: Carol

No. G-1414—2 light; Capacity two 150 Watt Bulbs; Box size 9½" x 13½" x 4" Deep; Frame size 10" x 14" x 1¾" Deep; Flashed Opal Glass.

Code: Cement

Finish: Chrome. Packed individually; 6 to unit.





530-B



528-B



531-B



529-B



534-B



533-B

The 500 Series

No. G-528B

Length overall 8½"; Extension 5"; Made of Copper with Aluminum Arm; Finish: Dull Copper with Swedish trim; Clear or ¾ Frosted Glass. Code: **Hallo**

No. G-529B

Length overall 11"; Extension 7½"; Made of Aluminum and Copper; Finish: Swedish with Dull Copper trim; Amber Cathedral Glass. Code: **Head**

No. G-530B

Length overall 11½"; Extension 6¾"; Made of Aluminum and Copper; Finish: Swedish with Dull Copper trim. Code: **Helm**

No. G-531B

Length overall 11½"; Extension 7"; Made of Aluminum and Copper; Finish: Swedish with Dull Copper trim; 4" x 6" Frosted Crystal Cylinder. Code: **Herald**

No. G-533B

Length overall 10½"; Extension 8"; Made of Aluminum and Zinc; Finishes: Swedish with Dull Copper trim; or Bronze; Crystal or Amber Glass. Code: **Hickory**

No. G-534B

Length overall 8½"; Extension 6¼"; Made of Copper; Finish: Dull Copper; Made of Brass; Finish: Colonial Brass; Crystal Glass. Code: **Hive**

Packed individually; 6 to case.

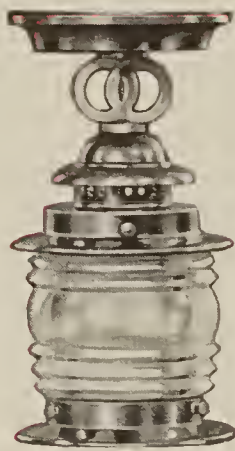




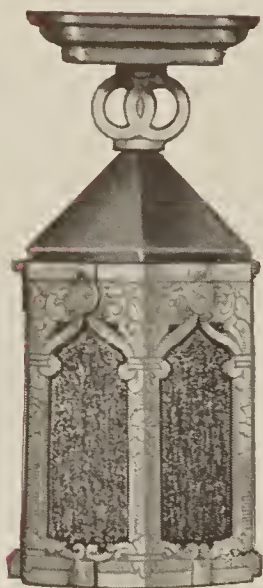
533C



530C



534C



529C



531C

The 500 Series

No. G-529C

Length overall 11½"; Made of Aluminum and Copper; Finish: Swedish with Dull Copper trim; Amber Cathedral Glass. Code: Hock

No. G-531C

Length overall 11½"; Made of Aluminum and Copper; Finish: Swedish with Dull Copper trim; 4" x 6" Frosted Crystal Cylinder. Code: Horse

No. G-530C

Length overall 11½"; Made of Aluminum and Copper; Finish: Swedish with Dull Copper trim. Code: Holley

No. G-533C

Length overall 11"; Made of Aluminum and Zinc; Finishes: Swedish; or Bronze; Crystal or Amber Glass. Code: Hyena

No. G-534C

Length overall 10"; Made of Copper; Finish: Dull Copper with Swedish trim; or Black; Made of Brass; Finish: Colonial Brass with Swedish trim; Crystal Glass. Code: Hyssop

Packed individually; 6 to case.



L I G H T I N G



521

980

520

The 500 Series

No. G-520B

Length overall 19½"; Extension 10½"; Cage 8½" x 16"; Closed Bottom; Made of Bronze; Frosted Crystal Glass. Code: Jack

No. G-520D

Drop Type with Closed Bottom. Length overall 40"; Made of Bronze; Solid Brass Chain; Frosted Crystal Glass. Code: Jade

No. G-980

Length overall 40"; Made of Bronze; Solid Brass Chain. Code: Joker

No. G-521B

Length overall 20½"; Extension 11½"; Cage 9" x 17"; Made of Bronze; 8" x 12" Frosted Crystal Cylinder. Code: Jockey

No. G-521D

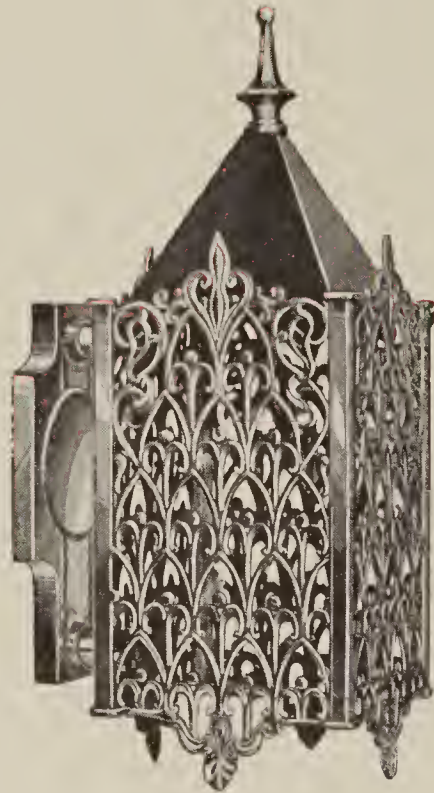
Drop Type. Length overall 40"; Made of Bronze; Solid Brass Chain; 8" x 12" Frosted Crystal Cylinder. Code: Jolley

*Finish: Antique Bronze.
Packed individually; 4 to unit.*





880



522B



1080

The 500 Series

No. G-522B

Length overall 19½"; Extension 10"; Cage 6¾" x 16½"; Made of Bronze. **Code: Jubilee**

No. G-880

Length overall 40"; Made of Bronze; Solid Brass Chain; 8" x 12" Frosted Crystal Cylinder. **Code: Junior**

No. G-522D

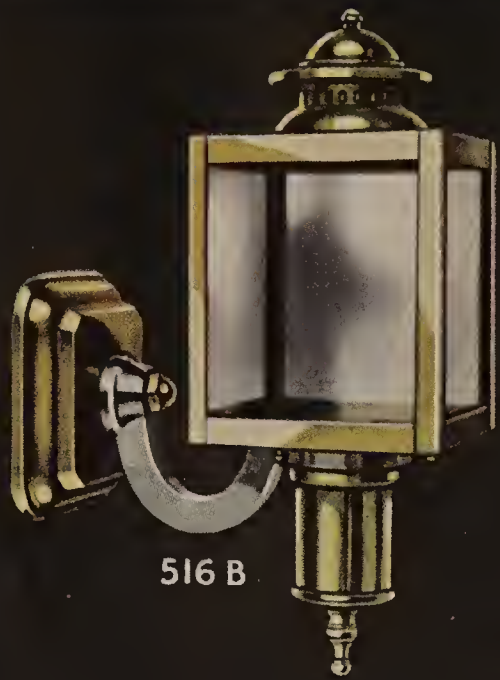
Drop Type. Length overall 40"; Made of Bronze; Solid Brass Chain. **Code: Jungle**

No. G-1080

Length overall 40"; Closed Bottom; Made of Bronze; Solid Brass Chain; Frosted Crystal Glass. **Code: Label**

*Finish: Antique Bronze.
Packed individually; 4 to unit.*





516 B



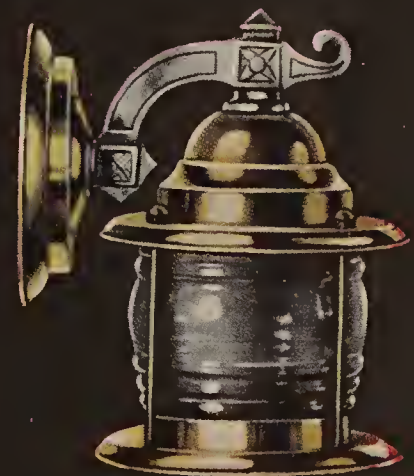
508 B



507 B



505 B



504 B

The 500 Series

No. G-504B

Length overall 10"; Extension 7"; Made of Copper or Brass, with Aluminum Arm; Finishes: Dull Copper with Swedish trim; Colonial Brass with Swedish trim; or Black; Crystal or Amber Glass. Code: **Habit**

No. G-505B

Length overall 10½"; Extension 7½"; Made of Copper with Aluminum Arm; Finish: Dull Copper with Swedish trim; Crystal or Amber Glass. Code: **Hare**

No. G-516B

Length overall 12"; Extension 8"; Made of Copper or Brass, with Aluminum Arm; Finishes: Dull Copper with Swedish trim; Colonial Brass with Swedish trim; or Black with Brass trim; Clear Glass. Code: **Union**

No. G-507B

Length overall 10½"; Extension 7½"; Made of Zinc; Finish: Swedish with Brass trim; Crystal or Amber Glass. Code: **Henna**

No. G-508B

Length overall 8½"; Extension 8"; Made of Copper or Brass, with Aluminum Arm; Finishes: Dull Copper with Swedish trim; Colonial Brass with Swedish trim; or Black; Clear Glass. Code: **Honey**

Packed individually; 6 to case.





The 500 Series

No. G-504C

Length overall 9½"; Made of Copper or Brass; Finishes: Dull Copper with Swedish trim; Colonial Brass with Swedish trim; or Black; Crystal or Amber Glass. **Code: Hack**

No. G-504D

Length overall 27"; Made of Copper or Brass; Finishes: Dull Copper with Swedish trim; Colonial Brass with Swedish trim; or Black; Crystal or Amber Glass.

Code: Hamper

No. G-505C

Length overall 11"; Made of Copper; Finish: Dull Copper; Crystal or Amber Glass. **Code: Hawk**

No. G-505D

Length overall 27"; Made of Copper; Finish: Dull Copper; Crystal or Amber Glass. **Code: Hedge**

No. G-507C

Length overall 11"; Made of Zinc; Finish: Swedish with Brass trim; Crystal or Amber Glass. **Code: History**

No. G-507D

Length overall 30"; Made of Zinc; Finish: Swedish with Brass trim; Crystal or Amber Glass. **Code: Hooky**

No. G-508C

Length overall 10"; Made of Copper or Brass; Finishes: Dull Copper with Swedish trim; Colonial Brass with Swedish trim; or Black; Clear Glass. **Code: Hood**

No. G-508D

Length overall 28"; Made of Copper or Brass; Finishes: Dull Copper; Colonial Brass; or Black; Clear Glass.

Code: Horn

*Solid Brass Chain used on all Drop Lanterns.
Packed individually; 6 to case.*





The 500 Series

No. G-510B

Length overall 12"; Extension 11"; Made of Copper and Aluminum; Finishes: Dull Copper with Swedish trim; Colonial Brass with Swedish trim; or Black; Clear Glass. Code: Hussar

No. G-517B

Length overall 11"; Extension 9"; Made of Bronze and Copper; Finish: Dull Copper; 4" x 6" Frosted Crystal Cylinder. Code: Umpire

No. G-525B

Length overall 14"; Extension 12"; Spread 24"; Made of Copper and Aluminum; Finish: Dull Copper with Swedish trim; Amber Cathedral Glass. Code: Urban

No. G-518B

Length overall 9"; Extension 6"; Made of Aluminum and Copper; Finish: Swedish with Copper trim; Frosted Crystal Glass. Code: Uhlan

No. G-523B

Length overall 7½"; Extension 6¼"; Made of Copper; Finish: Dull Copper; Frosted Crystal Glass. Code: Umber

Packed individually; 6 to case.





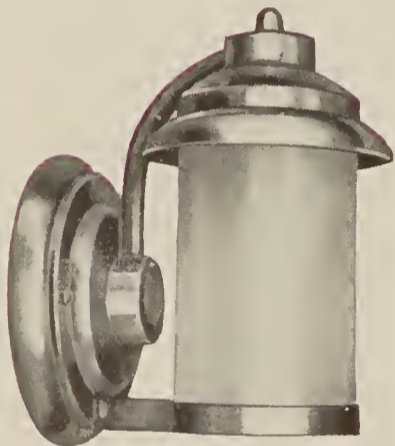
510D



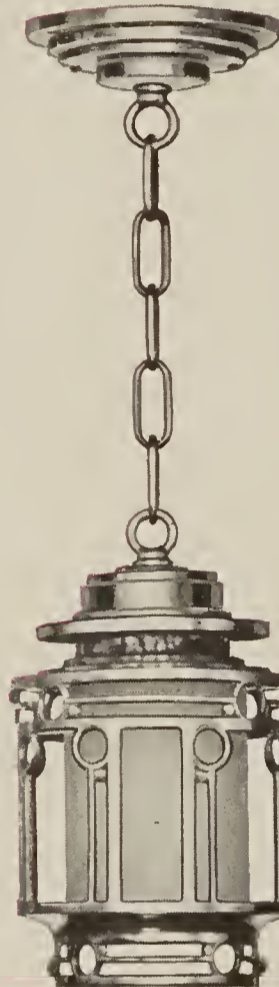
506B



517C



519B



517D



526B

The 500 Series

No. G-506B

Length overall 9½"; Extension 6"; Made of Aluminum; Finish: Swedish or Bronze; Amber or Crystal Glass.

Code: Hades

No. G-510C

Ceiling. Length overall 12"; Made of Copper or Brass, with Aluminum loop; Finishes: Dull Copper with Swedish trim; Colonial Brass with Swedish trim; or Black; Clear Glass.

Code: Hotel

No. G-510D

Length overall 30"; Made of Copper or Brass; Solid Brass chain; Finishes: Dull Copper; Colonial Brass; or Black; Clear Glass.

Code: House

No. G-517C

Length overall 12" Made of Bronze and Copper; Finish: Dull Copper; Frosted Crystal Cylinder.

Code: Usher

No. G-517D

Length overall 30"; Made of Bronze and Copper; Solid Brass chain; Finish: Dull Copper; Frosted Crystal Cylinder.

Code: Urchin

No. G-519B

Length overall 7"; Extension 5½"; Made of Copper; Finish: Dull Copper; Frosted Crystal Glass.

Code: Utensil

No. G-526B — Length overall 14"; Extension 12"; Made of Copper with Aluminum Arm and Back; Finish: Dull Copper with Swedish trim; Amber Cathedral Glass. Code: Utopia

Packed individually; 6 to case.





40



50—2 light



20



30



515B



500B

The 500 Series

No. G-20

Spread 5" x 5"; Depth 5"; Made of Steel; Finish: Black; Crystal Glass; Packed individually; 12 to case.

Code: Hypo

No. G-30

Width 5½"; Depth 5½"; Made of Steel, finished in Black; or made of Copper, finished in Dull Copper; Crystal or Amber Glass; Packed individually; 12 to case.

Code: Hunt

No. G-40

Width 6"; Depth 6"; Made of Zinc; Finish: Bronze; Amber Cathedral Glass; Packed individually; 6 to case.

Code: Havana

No. G-50

2 light; Width 9"; Depth 4½"; Made of Zinc; Finish: Bronze; Amber Cathedral Glass; Packed individually; 6 to case.

Code: Hazel

No. G-500B

¾" Fitter; Extension 5"; Made of Cast Iron; Finish: Black; Packed individually; 12 to case.

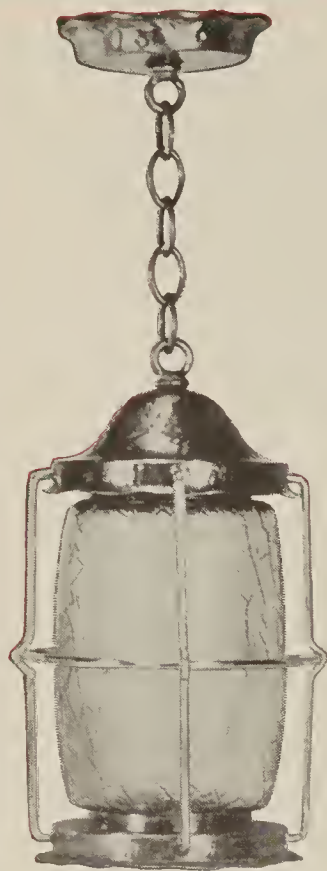
Code: Hector

No. G-515B

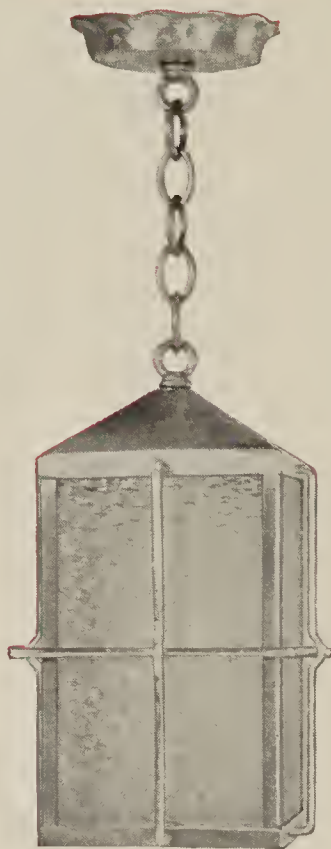
Length overall 10"; Extension 5"; Made of Aluminum and Zinc; Finish: Swedish; Frosted Crystal Glass; Packed individually; 12 to case.

Code: Uncle





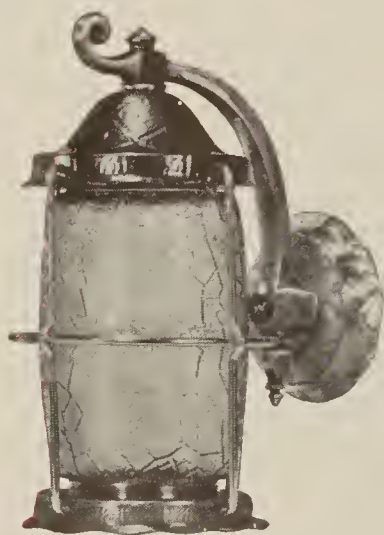
511D



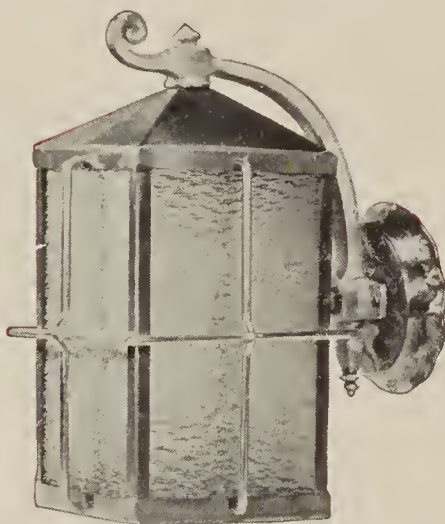
513D



514D



511B



513B



514B

The 500 Series

No. G-511B

Length overall 14½"; Extension 10"; Cage 7" x 12"; Made of Copper with Aluminum Arm and Back; Finish: Dull Copper with Swedish and Brass trim; Crystal or Amber Glass. **Code: Hale**

No. G-511D

Length overall 34"; Cage 7" x 12"; Made of Copper; Solid Brass Chain; Finish: Dull Copper with Brass trim; Crystal or Amber Glass. **Code: Hamal**

No. G-513B

Length overall 14"; Extension 10"; Cage 7" x 12"; Made of Copper with Aluminum Arm and Back; Finish: Dull Copper with Swedish and Brass trim; Amber Cathedral or Crystal Moss Glass. **Code: Hatchet**

No. G-513D

Length overall 34"; Cage 7" x 12"; Made of Copper; Solid Brass Chain; Finish: Dull Copper with Brass trim; Amber Cathedral or Crystal Moss Glass. **Code: Havoc**

No. G-514B

Length overall 14"; Extension 10"; Cage 7" x 12"; Made of Copper with Aluminum Arm and Back; Finish: Dull Copper with Swedish and Brass trim; Amber Cathedral or Crystal Moss Glass. **Code: Heaven**

No. G-514D

Length overall 34"; Cage 7" x 12"; Made of Copper; Solid Brass Chain; Finish: Dull Copper with Brass trim; Amber Cathedral or Crystal Moss Glass. **Code: Hippo**

Packed individually; 4 to unit.





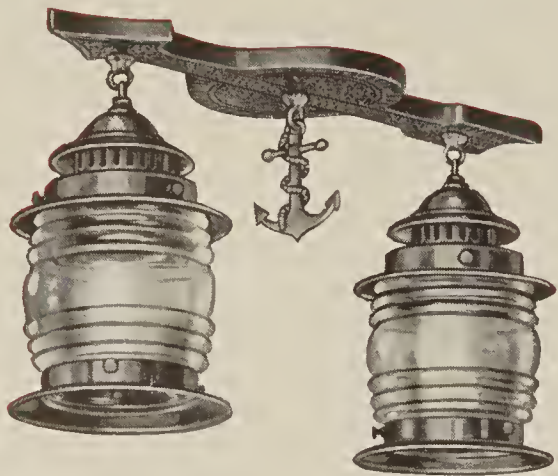
The 1800 Series

- No. G-1811 Back Plate 4½"; Extension 5".
Code: Yama
- No. G-1821 Back Plate 4½"; Extension 7½".
Code: Yacht
- No. G-1833 Same as G-1873; less Bottom Glass.
Code: Yankee
- No. G-1835 Same as G-1875; less Bottom Glass.
Code: Yard
- No. G-1843 Same size as G-1873; in drop type;
less Bottom Glass. Code: Year
- No. G-1845 3 light; 300-450 Watt Capacity; Spread
16". Code: Yellow

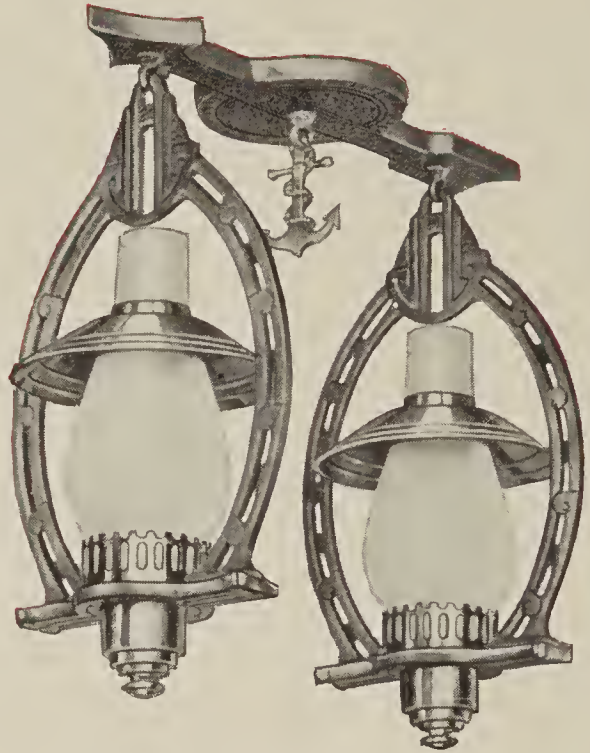
- No. G-1845A Same as G-1845; Controlled with 4-
way switch. Code: Yodel
- No. G-1863 Same as G-1873; in drop type.
Code: Yule
- No. G-1865 Same as G-1845; with Crystal Etched
Bottom Glass. Code: Young
- No. G-1865A Same as G-1865; Controlled with
4-way switch. Code: Yokel
- No. G-1873 1 light; Capacity 150 Watt Bulb;
Spread 11"; Depth overall 14"; with Cryst-
tal Etched Bottom Glass. Code: Yahoo
- No. G-1875 3 light; 300-450 Watt Capacity; Spread
16"; Depth overall 14"; with Crystal
Etched Bottom Glass. Code: Yabba

*Finishes: Gold Tint; or Silver Tint.
Packed individually; 6 to unit.*

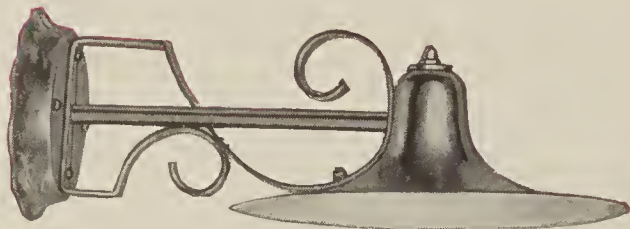




422



402



99

For the Den and Garage

No. G-99

Extension 15½"; Reflector 10"; Made of Copper and Aluminum; Finish: Black; Packed individually; 6 to unit.

Code: Vaal

No. G-402

Ceiling Plate 5" x 15½"; Depth 15"; Finish: Swedish with Brass trim; ¾ Frosted Chimneys; Packed individually; 4 to unit.

Code: Valet-

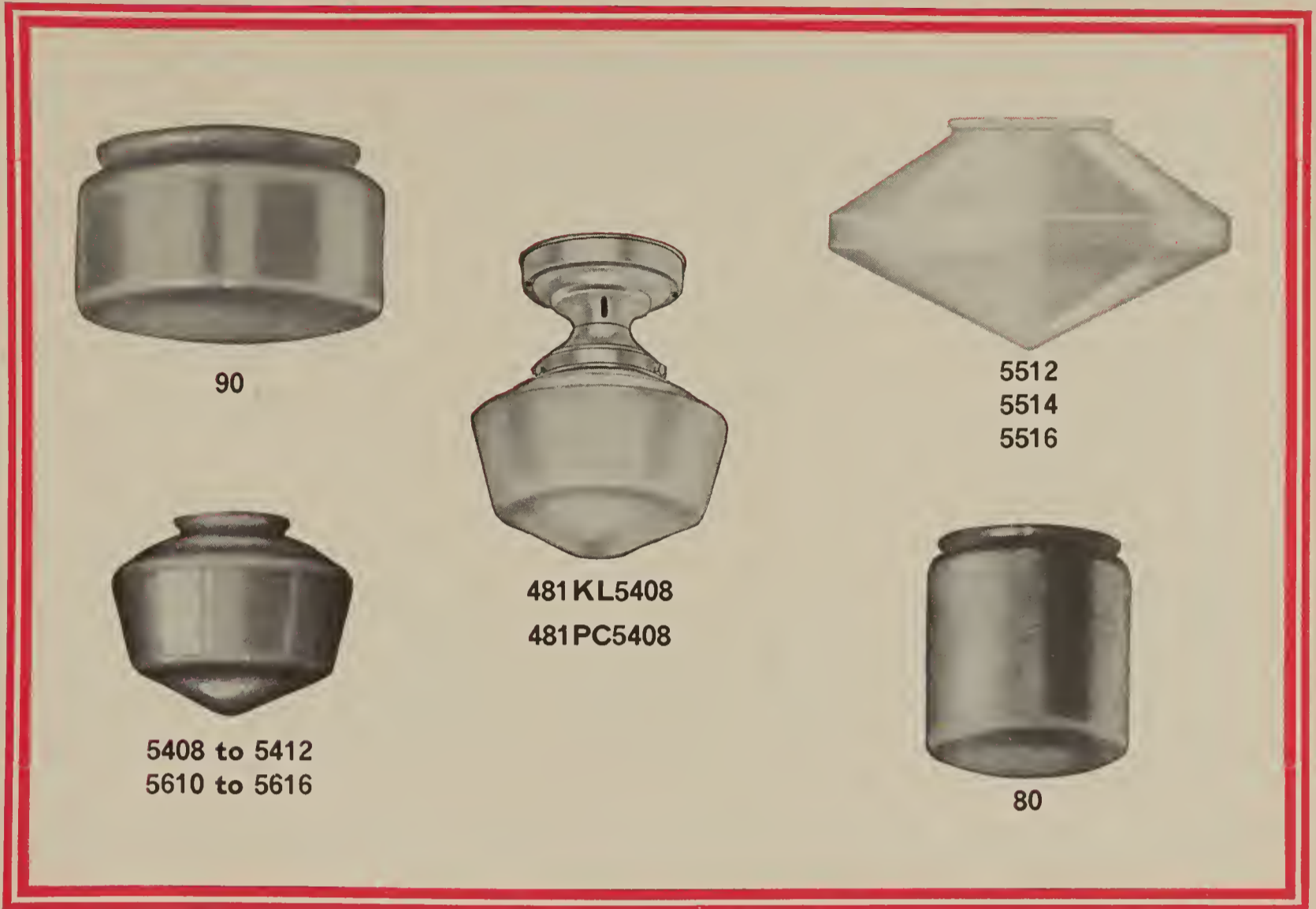
No. G-422

Ceiling Plate 5" x 15½"; Depth 7½"; Finish: Swedish with Dull Copper trim; Crystal Glass; Packed individually; 4 to unit.

Code: Valise



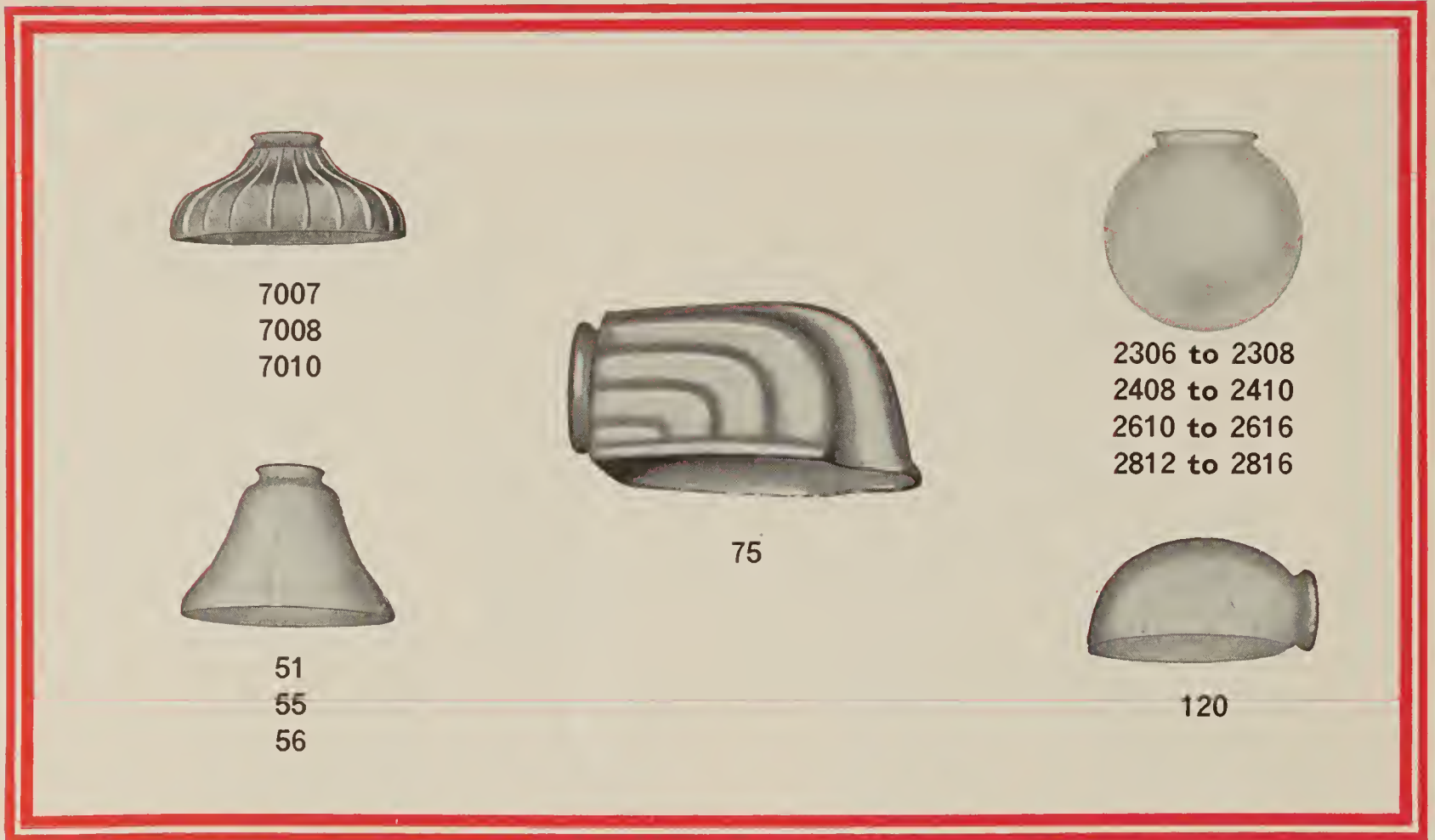
L I G H T I N G



Opal Lighting Glassware

THIS GLASSWARE SHIPPED FROM FACTORY AT STAR CITY, WEST VIRGINIA

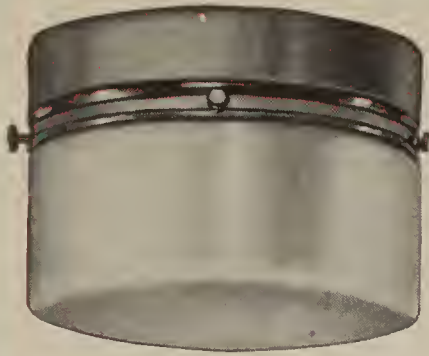
No.	Diam.	Fitter	Depth	Std. Pkge.	Std. Pkge. Wt.
80	4½"	4"	5"	3 Doz.	30 Lbs.
90	6¾"	6"	3½"	1 Doz.	16 Lbs.
481 KL5408	8⅝"	4"	10½"	½ Doz.	23 Lbs.
481 PC5408	8⅝"	4"	10½"	½ Doz.	23 Lbs.
5408	8⅝"	4"	6¾"	1 Doz.	18 Lbs.
5410	10"	4"	7¼"	1 Doz.	25 Lbs.
5412	12"	4"	7¾"	1 Doz.	40 Lbs.
5512	12"	4"	6¼"	½ Doz.	20 Lbs.
5514	14"	6"	8¼"	½ Doz.	25 Lbs.
5516	16"	6"	8¾"	⅙ Doz.	13 Lbs.
5610	10"	6"	7¼"	1 Doz.	25 Lbs.
5612	12"	6"	7¾"	½ Doz.	20 Lbs.
5614	14"	6"	8⅜"	½ Doz.	25 Lbs.
5616	16"	6"	9¼"	⅙ Doz.	13 Lbs.



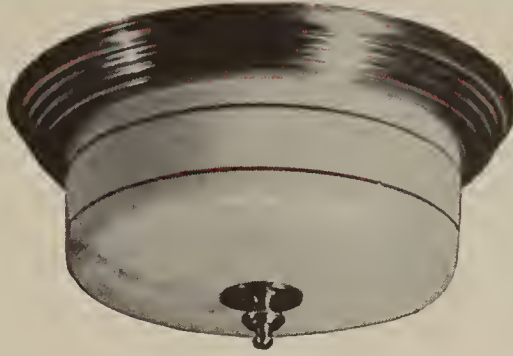
Opal Lighting Glassware

THIS GLASSWARE SHIPPED FROM FACTORY AT STAR CITY, WEST VIRGINIA

No.	Diam.	Fitter	Depth	Std. Pkge.	Std. Pkge. Wt.
51	6"	2 $\frac{1}{4}$ "	4 $\frac{1}{2}$ "	3 Doz.	27 Lbs.
55	7"	2 $\frac{1}{4}$ "	4 $\frac{3}{4}$ "	3 Doz.	35 Lbs.
56	8"	2 $\frac{1}{4}$ "	5 $\frac{3}{8}$ "	2 Doz.	30 Lbs.
75	...	2 $\frac{1}{4}$ "	4 Doz.	26 Lbs.
120	...	2 $\frac{1}{4}$ "	4 Doz.	26 Lbs.
2306	6"	3 $\frac{1}{4}$ "	6"	3 Doz.	30 Lbs.
2307	7"	3 $\frac{1}{4}$ "	7"	1 Doz.	24 Lbs.
2308	8"	3 $\frac{1}{4}$ "	8"	1 Doz.	18 Lbs.
2408	8"	4"	8"	1 Doz.	18 Lbs.
2410	10"	4"	10"	1 Doz.	32 Lbs.
2610	10"	6"	10"	1 Doz.	32 Lbs.
2612	12"	6"	12"	$\frac{1}{3}$ Doz.	15 Lbs.
2614	14"	6"	14"	$\frac{1}{3}$ Doz.	18 Lbs.
2616	16"	6"	16"	$\frac{1}{12}$ Doz.	10 Lbs.
2812	12"	8"	12"	$\frac{1}{3}$ Doz.	15 Lbs.
2814	14"	8"	14"	$\frac{1}{3}$ Doz.	18 Lbs.
2816	16"	8"	16"	$\frac{1}{12}$ Doz.	10 Lbs.
7007	7"	2 $\frac{1}{4}$ "	3 $\frac{1}{4}$ "	3 Doz.	45 Lbs.
7008	8"	2 $\frac{1}{4}$ "	3 $\frac{1}{2}$ "	2 Doz.	35 Lbs.
7010	10"	2 $\frac{1}{4}$ "	3 $\frac{3}{4}$ "	2 Doz.	35 Lbs.



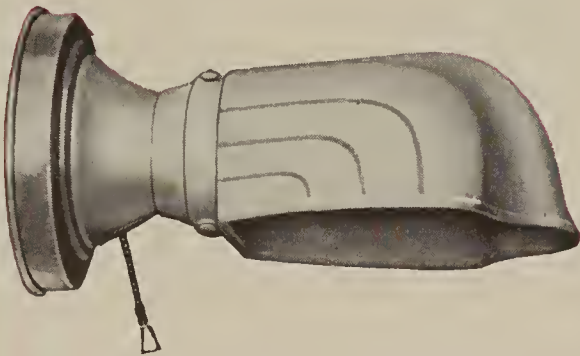
436KL90



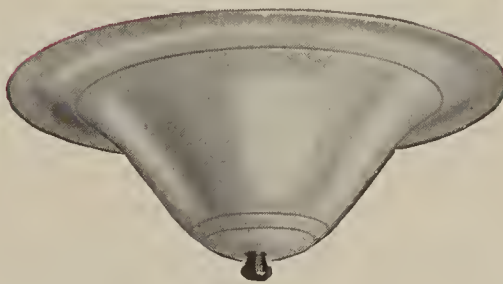
1004



483KL80
483PC80



112PC75



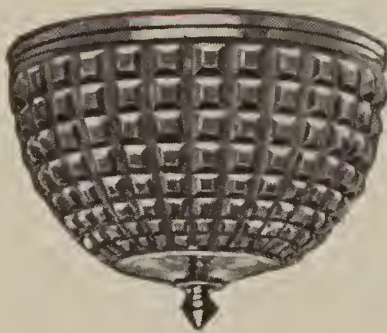
300



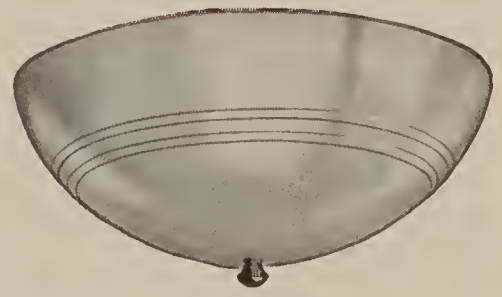
620



100



600



200

Kitchen, Bathroom and Bedroom Series

No. G-100—Semi-indirect Glass Converter; Fastens to light bulb with spring clip; 5 $\frac{5}{8}$ " diameter; Colors: Crystal; Amber; Pink; or Blue; 24 to case.

Code: Dental

No. G-112PC75—Wired with pull chain receptacle; Finishes: White Enamel; or Chrome; Packed individually; 12 to case.

Code: Nasal

No. G-200—Semi-indirect Ivory Plastic Converter; Fastens to light bulb with spring clip; 7" diameter; Packed individually; 36 to case.

Code: Dial

No. G-300—Indirect Metal Converter; Fastens to light bulb with spring clip; 7" diameter; Finish: Ivory; Packed individually; 36 to case.

Code: Drama

No. G-483KL80—Wired keyless; Length overall 7"; Finishes: White Enamel; or Chrome. Opal Glass; Packed individually; 12 to case.

Code: North

No. G-483PC80—Wired Pull Chain.

Code: Nugget

No. G-436KL90—Wired keyless; Length overall 4 $\frac{3}{4}$ "; Finishes: White Enamel; or Chrome. Opal Glass; Packed individually; 6 to case.

Code: Nuncio

No. G-600—Semi-indirect Glass Converter; Fastens to light bulb with spring clip; 5" diameter; Crystal Glass; Packed individually; 24 to case.

Code: Dray

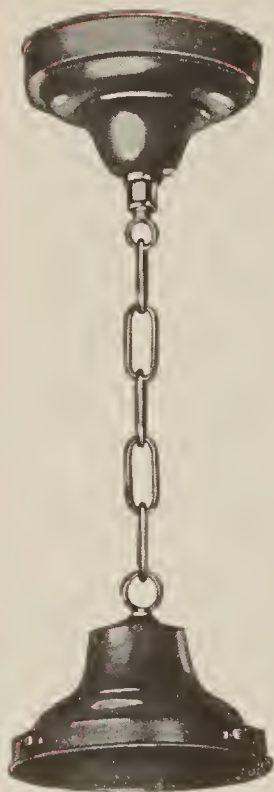
No. G-620—Spread 5" x 5"; Depth 5"; Made of Brass; Finish: Colonial Brass; Crystal Glass; Packed individually; 6 to case.

Code: Drum

No. G-1004—2 lights; Spread 10"; Finish: Chrome. Opal Glass: Black Lined; or Plain; Packed individually; 6 to case.

Code: Emboss

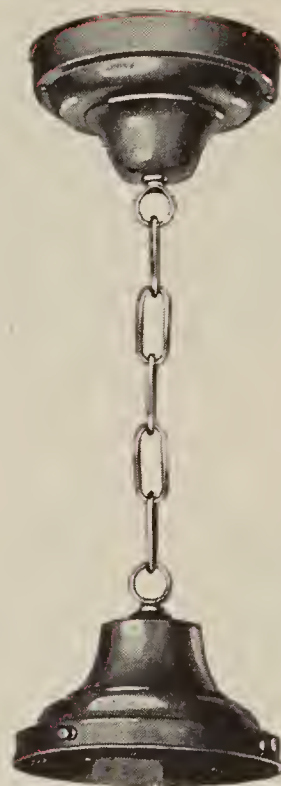




644
646



734
736



744
746



706



705

The Commercial Series

No. G-644

4" Drop type with stem; Wired complete; 36" overall; Packed individually; 24 to case. **Code: Music**

No. G-646

6" Drop type with stem; Wired complete; 36" overall; Packed individually; 24 to case. **Code: Merit**

No. G-705

5 1/2" Canopy with 3/4" slip ring; Deep flange with knockout; 25 to package. **Code: Mount**

No. G-706

6" Holder; 25 to package. **Code: Melon**

No. G-734

4" Ceiling type; Wired complete; Packed individually; 24 to case. **Code: Motor**

No. G-736

6" Ceiling type; Wired complete; Packed individually; 24 to case. **Code: Monitor**

No. G-744

4" Drop type with strap; Wired complete; 36" overall; Packed individually; 24 to case. **Code: Mullet**

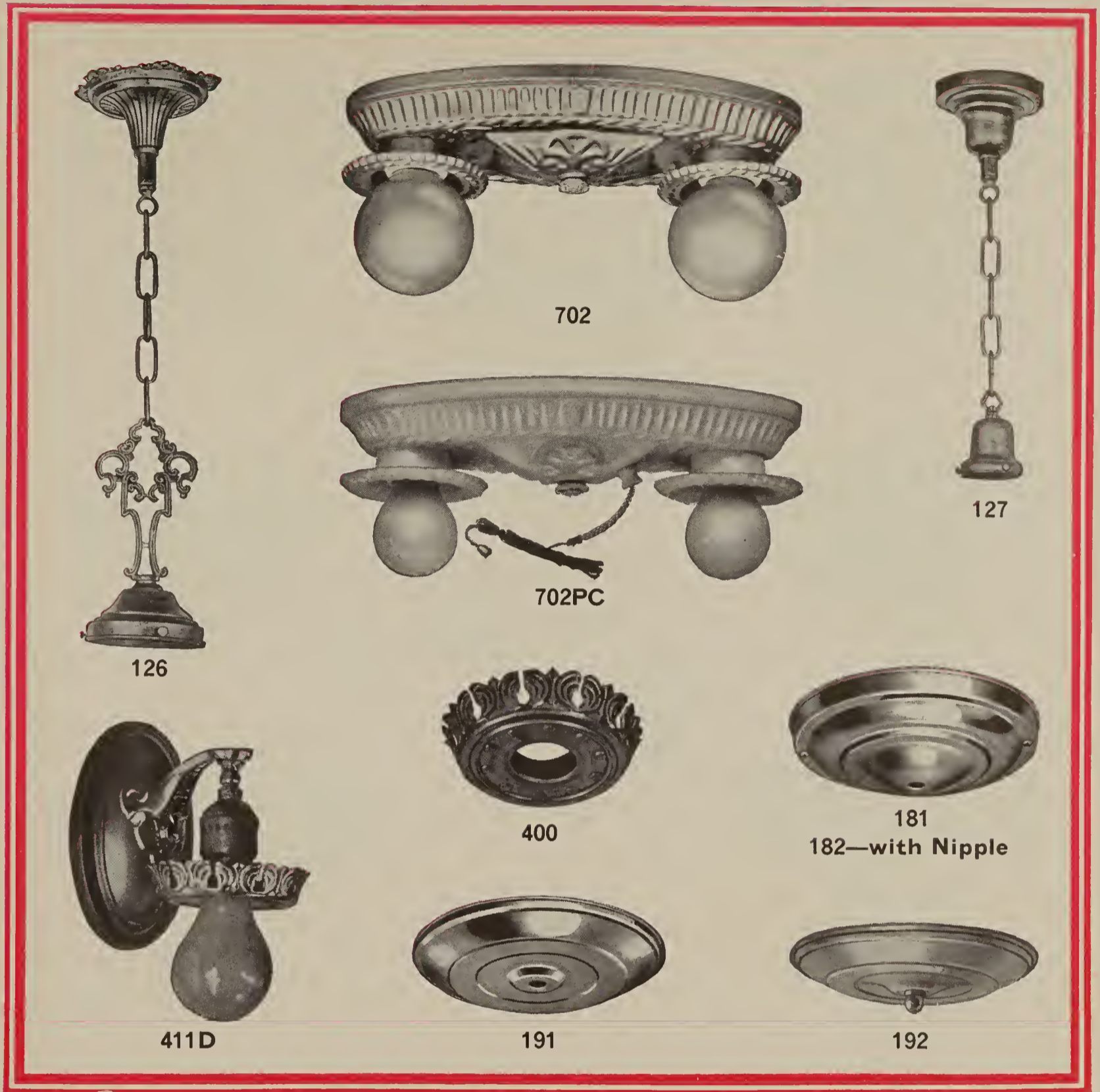
No. G-746

6" Drop type with strap; Wired complete; 36" overall; Packed individually; 24 to case. **Code: Mayor**

Finish: Statuary Bronze.

Mogul Sockets can be furnished on all Hangers.





Miscellaneous Holders and Parts

No. G-126—4" fitter; Chain pendant; Finish: Ivory Poly; Packed individually; 24 to case. **Code: Major**

No. G-127—2 1/4" fitter; Chain pendant; wired with key or pull socket; Finishes: Browntone; Ivory; or White Enamel; Packed individually; 36 to case. **Code: Marine**

No. G-181—Drop Cord Canopy; less strap; with bushed eyelet; diameter 5 5/8"; Finish: Browntone; 25 to package. **Code: Dart**

No. G-182—Same as G-181; with riveted nipple. **Code: Daub**

No. G-191—Outlet Closer 5 5/8" diameter; Finishes: Ivory; or Brushed Brass; 25 to package. **Code: Delta**

No. G-192—Outlet Closer; Furnished complete with strap, nipple, and knob; 5 5/8" diameter; Finishes: Ivory; or Brushed Brass; Packed individually; 36 to case. **Code: Derby**

No. G-400—Ball lamp adapter; Screws on standard socket; Finish: Antique Gold; 50 to package. **Code: Musk**

No. G-411D—Spread 6" x 4"; Extension 6"; Finish: Browntone; Packed individually; 12 to case. **Code: Vandal**

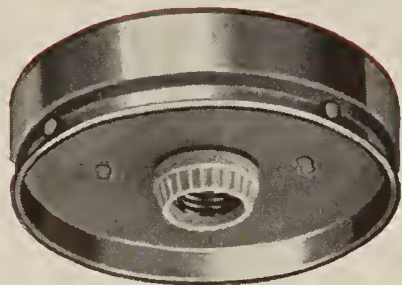
No. G-702—6" x 12" Oval; Finishes: Old Ivory; Ivory Poly; or Gold Poly; Packed individually; 24 to case. **Code: Murra**

No. G-702PC—6" x 12" Oval with pull switch; Finishes: Old Ivory; Ivory Poly; or Gold Poly; Packed individually; 24 to case. **Code: Admire**





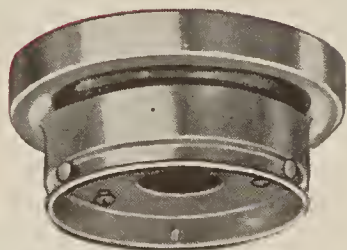
722



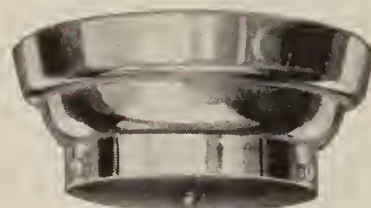
436KL



723



434



483



432



724



721

Modern Beamlights and Holders

No. G-432

2 1/4" fitter; Bare, with strap; Canopy 4 3/8" diameter with eyelet; 36 to case.

Code: Nozzle

No. G-434

4" fitter; Bare, with strap; Canopy 5 1/2" diameter with eyelet; 36 to case.

Code: Nubia

No. G-436KL

6" fitter; Wired with keyless receptacle; Canopy 6" diameter; 24 to case.

Code: Nullah

No. G-483

4" fitter; Bare, with strap; Canopy 5 1/2" diameter; Deep flange and eyelet; 36 to case.

Code: Nerve

No. G-721

Bare, with strap; Canopy 7" diameter; 24 to case.

Code: Nutria

No. G-722

2 1/4" fitter; Bare, with strap; Canopy 7" diameter; 24 to case.

Code: Nurse

No. G-723

3 1/4" fitter; Bare, with strap; Canopy 7" diameter; 24 to case.

Code: Nymph

No. G-724

4" fitter; Bare, with strap; Canopy 7" diameter; 24 to case.

Code: Nyssa

Finishes: Chrome; or White Enamel.

Packed individually.





481



134



112



481CO



132



133



124

HOLDERS for Bedroom, Kitchen or Hall

No. G-112

2 1/4" fitter; Bare, with strap; Canopy 4 1/4" diameter with eyelet; Finishes: White Enamel; or Chrome; 36 to case. **Code: Mineral**

No. G-124

4" fitter; Bare, with strap; Canopy 6 1/2" diameter with eyelet; Finishes: Ivory Poly; or Gold Poly; 24 to case. **Code: Maniac**

No. G-132

2 1/4" fitter; Bare, with strap; Canopy 5 1/2" diameter with eyelet; Finishes: White Enamel; Old Ivory; or Gold; 36 to case. **Code: Meteor**

No. G-133

3 1/4" fitter; Bare, with strap; Canopy 5 1/2" diameter with eyelet; Finishes: White Enamel; Old Ivory; Gold; Black Enamel; or Chrome; 36 to case. **Code: Nabee**

No. G-134

4" fitter; Bare, with strap; Canopy 5 1/2" diameter with eyelet; Finishes: White Enamel; Old Ivory; or Gold; 36 to case. **Code: Mermaid**

No. G-481

4" fitter; Bare, with strap; Canopy 5 1/2" diameter with deep flange; eyelet and knockout; Finishes: White Enamel; Statuary Bronze; or Chrome; 36 to case. **Code: Magic**

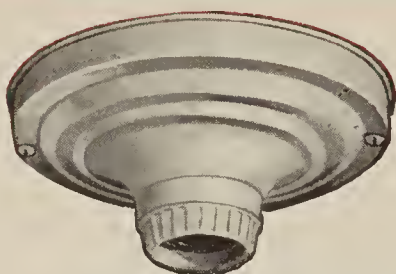
No. G-481CO—Same as G-481; wired with switch and Convenience Outlet; Finishes: White Enamel; or Chrome; 36 to case. **Code: Naire**

All Holders packed individually.





111



171



125



151



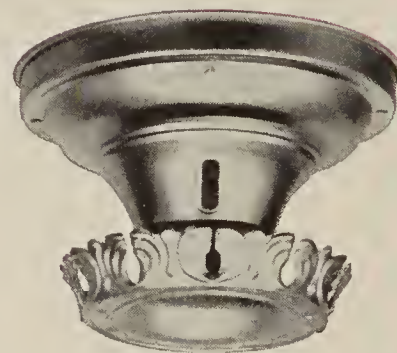
161



123



121



131

*Beamlights for
Bedroom, Kitchen or Hall*

No. G-111—Bare, less strap; Canopy 4 $\frac{1}{4}$ " diameter with eyelet; Finishes: White Enamel; Old Ivory; or Gold; 12 to package; 72 to case.

Code: Mantel

No. G-121—Bare, with strap; Canopy 4 $\frac{1}{4}$ " diameter with eyelet; Finishes: White Enamel; Old Ivory; or Gold; Packed individually; 36 to case.

Code: Malice

No. G-123—Bare, with strap; Canopy 6 $\frac{1}{4}$ " diameter with eyelet; Finishes: Old Ivory; Ivory Poly; or Gold Poly; Packed individually; 24 to case.

Code: Marsh

No. G-125—Bare, with strap; Canopy 6 $\frac{1}{4}$ " diameter with eyelet; Finishes: Old Ivory; Ivory Poly; or Gold Poly; Packed 2 to carton; 48 to case.

Code: Martyr

No. G-131—Bare, with strap; Canopy 5 $\frac{1}{2}$ " diameter with eyelet; Finishes: Old Ivory; Ivory Poly; or Gold Poly; Packed individually; 36 to case.

Code: Melody

No. G-151—Bare, with strap; Canopy 5 $\frac{1}{2}$ " diameter with eyelet; Finishes: Old Ivory; Bronze; Colonial Brass; or Chrome; Packed individually; 36 to case.

Code: Moth

No. G-161—Bare, with strap; Canopy 7 $\frac{1}{2}$ " diameter with eyelet; Finishes: Old Ivory; Ivory Poly; or Gold Poly; Packed individually; 24 to case.

Code: Adam

No. G-171—Bare, less strap; Canopy 5 $\frac{5}{8}$ " diameter with eyelet; Finishes: White Enamel; Brown-tone; or Ivory; 25 to package.

Code: Daisy



Price List COVERING 1938 CATALOG

Superseding all Previous Price Lists and Price Quotations

THESE PRICES SUBJECT TO CHANGE WITHOUT NOTICE

All prices subject to Federal and State Taxes

No.	Page	Price	No.	Page	Price
20	49	\$ 2.10	200		
21	29	4.20	200	55	\$.84
30 Black	49	2.10	202	27	4.20
30 Dull Copper	49	2.70	211	27	3.30
31	29	4.20	212	35	5.25
40	49	2.70	221	27	3.90
41	29	3.00	231	27	3.60
50	49	5.40	232	35	8.25
51 Opal Glass	54	Doz. 7.08	241	27	6.75
55 Opal Glass	54	Doz. 7.56	280	26	8.55
56 Opal Glass	54	Doz. 11.34	300		
61	29	3.15	300	55	.60
71	29	3.90	301	30	1.35
75 Opal Glass	54	Doz. 7.50	302	30	2.25
80 Opal Glass	53	Doz. 9.00	303	30	2.85
90 Opal Glass	53	Doz. 12.60	311	30	1.65
91	31	3.45	380	26	9.90
99	52	4.50	400		
100			400	57	.12
100 Amber	55	.90	402	52	9.75
100 Blue	55	.90	411D	57	1.50
100 Crystal	55	.75	422	52	9.00
100 Pink	55	.90	432 Chrome	58	.63
111 Less Strap	60	.18	432 W.E.	58	.42
111 With Strap	60	.24	434 Chrome	58	.84
112 Chrome	59	.60	434 W.E.	58	.54
112 W.E.	59	.39	436KL Chrome	58	1.50
112PC75 Chrome	55	1.95	436KL W.E.	58	.90
112PC75 W.E.	55	1.65	436KL90 Chrome	55	3.60
120 Opal	54	Doz. 7.20	436KL90 W.E.	55	3.00
121	60	.36	480	26	8.40
123	60	.54	481 Chrome	59	.75
124	59	.54	481 Stat. Bronze	59	.54
125 Less Strap	60	.36	481 W.E.	59	.45
125 With Strap	60	.42	481CO Chrome	59	2.10
126	57	2.40	481CO-W.E.	59	1.80
127 B.T.-Key	57	1.35	481KL5408 Chrome	53	1.95
127 B.T.-Pull Chain	57	1.50	481KL5408 W.E.	53	1.65
127 Ivory-Key	57	1.50	481PC5408 Chrome	53	2.40
127 Ivory-Pull Chain	57	1.65	481PC5408 W.E.	53	2.10
131	60	.42	483 Chrome	58	.90
132	59	.39	483 W.E.	58	.60
133 Chrome	59	.72	483KL80 Chrome	55	2.55
133 W.E.	59	.42	483KL80 W.E.	55	2.25
134	59	.42	483PC80 Chrome	55	2.85
151 Bronze	60	.57	483PC80 W.E.	55	2.55
151 Chrome	60	.75	500		
151 Col. Brass	60	1.05	500B	49	2.40
151 Ivory	60	.42	504B Black	45	4.95
161	60	.60	504B Col. Brass	45	5.40
171	60	.18	504B Dull Copper	45	4.95
180	26	11.55	504C Black	46	4.80
181	57	.18	504C Col. Brass	46	5.25
182	57	.21	504C Dull Copper	46	4.80
191 Brushed Brass	57	.21	504D Black	46	5.25
191 Ivory	57	.18			
192 Brushed Brass	57	.36			
192 Ivory	57	.33			

No.		Page	Price
504D	Col. Brass.....	46	\$ 5.70
504D	Dull Copper.....	46	5.25
505B	45	4.65
505C	46	4.50
505D	46	4.95
506B	48	4.95
507B	45	5.55
507C	46	5.40
507D	46	5.85
508B	Black.....	45	6.30
508B	Col. Brass.....	45	6.75
508B	Dull Copper.....	45	6.30
508C	Black.....	46	6.15
508C	Col. Brass.....	46	6.60
508C	Dull Copper.....	46	6.15
508D	Black.....	46	6.60
508D	Col. Brass.....	46	7.05
508D	Dull Copper.....	46	6.60
510B	Black.....	47	9.60
510B	Col. Brass.....	47	10.35
510B	Dull Copper.....	47	9.60
510C	Black.....	48	9.45
510C	Col. Brass.....	48	10.20
510C	Dull Copper.....	48	9.45
510D	Black.....	48	9.90
510D	Col. Brass.....	48	10.65
510D	Dull Copper.....	48	9.90
511B	50	11.55
511D	50	10.95
513B	50	10.80
513D	50	10.20
514B	50	12.30
514D	50	11.70
515B	49	4.20
516B	Black.....	45	8.25
516B	Col. Brass.....	45	8.55
516B	Dull Copper.....	45	8.25
517B	47	13.50
517C	48	12.00
517D	48	12.30
518B	47	5.25
519B	48	3.00
520B	43	36.00
520D	43	34.50
521B	43	36.00
521D	43	34.50
522B	44	31.50
522D	44	30.00
523B	47	2.85
525B	47	11.25
526B	48	9.90
528B	41	5.25
529B	41	6.75
529C	42	6.60
530B	41	6.00
530C	42	5.85
531B	41	5.40
531C	42	5.25
533B	Bronze.....	41	6.75
533B	Swedish.....	41	6.30
533C	Bronze.....	42	6.60
533C	Swedish.....	42	6.15
534B	Black.....	41	3.45
534B	Col. Brass.....	41	3.75
534B	Dull Copper.....	41	3.45
534C	Black.....	42	3.30
534C	Col. Brass.....	42	3.60
534C	Dull Copper.....	42	3.30
580	26	12.30

No.		Page	Price
600 — 700			
600	55	\$.75
601	33	2.10
602	33	3.00
603	33	3.75
605	33	6.00
611	33	2.40
612	33	3.60
620	55	3.60
644	56	1.62
646	56	1.77
680	26	10.65
701	31	3.30
702	57	1.02
702PC	57	1.62
705	56	.45
706	56	.60
721	Chrome.....	58	1.08
721	W.E.....	58	.66
722	Chrome.....	58	1.08
722	W.E.....	58	.66
723	Chrome.....	58	1.20
723	W.E.....	58	.78
724	Chrome.....	58	1.20
724	W.E.....	58	.78
734	56	.90
736	56	.99
744	56	1.50
746	56	1.65

800 — 900			
801	30	3.30
880	44	33.00
905	35	5.25
911CO	31	2.55
915	35	8.10
935	35	6.45
945	35	9.00
980	43	30.00

1000			
1000	25	4.80
1001	25	5.10
1002	25	8.70
1003	25	12.15
1004	55	4.50
1005	25	9.60
1007	25	6.90
Ivory Glass Opal Glass			
1008	Bronze.....	37	4.80 4.50
1008	Chrome.....	37	4.50 4.20
1008	Col. Brass.....	37	4.80 4.50
1008	Flemish Brass.....	37	4.80 4.50
1008	Ivory.....	37	4.05 3.75
1010	Bronze.....	37	6.60 6.15
1010	Chrome.....	37	6.30 5.85
1010	Col. Brass.....	37	6.60 6.15
1010	Flemish Brass.....	37	6.60 6.15
1010	Ivory.....	37	5.40 4.95
1012	Bronze.....	37	9.30 8.70
1012	Chrome.....	37	9.15 8.55
1012	Col. Brass.....	37	9.30 8.70
1012	Flemish Brass.....	37	9.30 8.70
1012	Ivory.....	37	8.40 7.80
1014	Bronze.....	37	11.70 10.80
1014	Chrome.....	37	11.40 10.50
1014	Col. Brass.....	37	11.70 10.80
1014	Flemish Brass.....	37	11.70 10.80
1014	Ivory.....	37	10.50 9.60
1080	44	34.50

No.	Page	Price
1100		
1101	39	\$4.50
1102	39	3.90
1102CO	39	4.35
1103	39	2.85
1105	39	2.70
1107-1	38	11.70
1107-2	38	13.20
1108	38	5.40
1108CO	38	5.85
1109	39	2.55
1109CO	39	3.00
1110	39	3.30
1110CO	39	3.75
1111	39	3.45
1111CO	39	3.90
1112	39	4.20
1112CO	39	4.65
1180	31	7.50

1200		
1201	34	1.50
1202	34	2.10
1202D	34	4.80
1203	34	2.70
1203D	34	5.40
1211	34	2.10

1300		
1302	38	9.00
1306	38	27.00
1312	38	4.20
1318	38	5.40
1320	40	12.00

1400		
1404	40	7.50
1407	40	9.75
1408	40	7.95
1409	40	6.75
1411	40	7.80
1412	40	11.25
1414	40	12.75

1500			
1501	Bronze	37	1.50
1501	Chrome	37	1.65
1501	Col. Brass	37	1.65
1501	Flemish Brass	37	1.50
1501	Ivory	37	1.35
1501 ^{1/2}	Bronze	30	1.95
1501 ^{1/2}	Chrome	30	2.10
1501 ^{1/2}	Col. Brass	30	2.10
1501 ^{1/2}	Flemish Brass	30	1.95
1501 ^{1/2}	Ivory	30	1.80
1502	Bronze	37	3.60
1502	Chrome	37	4.05
1502	Col. Brass	37	4.05
1502	Flemish Brass	37	3.60
1502	Ivory	37	3.00
1503	Bronze	37	4.20
1503	Chrome	37	4.50
1503	Col. Brass	37	4.50
1503	Flemish Brass	37	4.20
1503	Ivory	37	3.45
1505	Bronze	37	6.90
1505	Chrome	37	7.50
1505	Col. Brass	37	7.50
1505	Flemish Brass	37	6.90
1505	Ivory	37	5.70

No.	Page	Price
1600		
1601	28	\$1.05
1602	28	2.40
1603	28	3.00

1700		
1701	36	2.25
1702	36	2.85
1703	36	3.60
1751	36	3.00
1752	36	3.60
1753	36	4.35

1800		
1802	31	3.45
1811	51	4.35
1821	51	4.50
1833	51	6.90
1835	51	12.00
1843	51	9.00
1845	51	14.25
1845A	51	14.85
1863	51	9.75
1865	51	14.70
1865A	51	15.30
1873	51	7.35
1875	51	12.60

1900		
1901	28	1.05
1902	28	2.40
1903	28	3.00

2300			
2306	Opal	54	Doz. 7.56
2307	Opal	54	Doz. 9.45
2308	Opal	54	Doz. 11.34

2400			
2408	Opal	54	Doz. 11.34
2410	Opal	54	Doz. 20.79

2600			
2610	Opal	54	Doz. 20.79
2612	Opal	54	Doz. 32.13
2614	Opal	54	Doz. 45.36
2616	Opal	54	Doz. 62.37

2700			
		Cut	Frosted
2711	20		3.30
2712	20		4.65
2721	19	4.65	4.20
2722	19	7.50	6.60
2733	20		9.75
2735	20		12.60
2743	20		12.45
2745	20		16.35
2763	20	15.60	14.25
2765	19	21.75	19.50
2780	20	7.35	6.90

2800			
2812	Opal	54	Doz. 32.13
2814	Opal	54	Doz. 45.36
2816	Opal	54	Doz. 62.37

3800		
3811	22	2.55
3812	21	3.75
3821	21	3.45

No.	Page	Price
3822	22	\$5.10
3833	22	5.25
3835	22	7.95
3843	22	7.20
3845	22	9.60
3855	22	9.60
3865	21	14.40
3880	22	5.40

3900

3911	17	3.45
3912	17	4.80
3921	17	4.35
3922	17	6.60
3933	18	8.10
3935	18	11.40
3943	18	9.15
3945	18	13.50
3953	18	8.85
3955	18	13.50
3963	17	11.55
3965	17	16.95

4000

		Less Crystals	With Crystals
4008C	32	4.80	11.10
4008D	32	7.20	14.40
4010C	32	5.55	15.75
4010D	32	7.95	19.05
4012C	32	7.05	18.90
4012D	32	9.45	22.20
4016C	32	10.05	26.25
4016D	32	11.40	28.20
4021	32	3.75	4.65
4022	32	4.95	6.75

4100

4121	11	4.20
4163	12	12.75
4165	11	18.90
4173	11	12.00
4175	12	18.00
4180	12	7.20

4200

4211	23	2.10
4212	23	2.85
4233	24	4.20
4235	24	5.25
4243	24	5.40
4245	23	6.15
4255	24	6.75

4300

4321	13	4.20
4363	14	13.50
4365	14	19.50
4373	13	12.75
4375	14	18.75
4380	14	7.50
4385	13	21.75
4395	13	21.00

4400

4421	15	3.15
4463	16	9.00
4465	15	12.75
4473	15	8.25
4475	16	12.00

No.	Page	Price
4500		
4511B	2	\$5.25
4521	1	3.90
4522	1	6.00
4563	2	14.25
4565	1	21.00
4573	2	13.50
4575	2	20.25
4580	2	6.60

4600

4621	3	4.05
4622	3	6.00
4663	4	14.25
4665	3	22.50
4673	4	13.50
4675	4	21.75
4680	4	6.60

4700

		Less Prisms	With Prisms
4711	10	3.60	4.80
4712	10	5.10	7.50
4721	9	4.50	5.70
4722	9	6.90	9.30
4753	10	12.90	16.50
4755	10	18.00	24.00
4763	9	15.60	19.20
4765	9	23.25	29.25
4780	9	9.00	12.00

4800

		Less Crystals	With Crystals
4811	8	3.36	3.90
4812	8	4.92	6.00
4821	7	4.38	5.10
4822	7	6.96	8.40
4855	8	20.22	24.00
4865	7	23.07	27.75
4880	8	10.20	12.00

4900

4921	5	2.85
4963	6	8.10
4965	5	10.50
4973	5	7.20
4975	6	9.75

5400

5408 Opal	53	Doz.	9.45
5410 Opal	53	Doz.	15.90
5412 Opal	53	Doz.	23.82

5500

5512 Opal	53	Doz.	28.80
5514 Opal	53	Doz.	37.80
5516 Opal	53	Doz.	54.00

5600

5610 Opal	53	Doz.	15.90
5612 Opal	53	Doz.	23.82
5614 Opal	53	Doz.	33.27
5616 Opal	53	Doz.	47.25

7000

7007 Opal	54	Doz.	7.08
7008 Opal	54	Doz.	9.45
7010 Opal	54	Doz.	18.90

